

Burgersdorp

GARIEP MUNICIPALITY

Zoning Map (Existing Land Use Rights)

TOWN PLANNING SCHEME (Land Use Planning Ordinance)
 PROMULGATED IN TERMS OF THE LAND USE PLANNING ORDINANCE 15 OF 1985

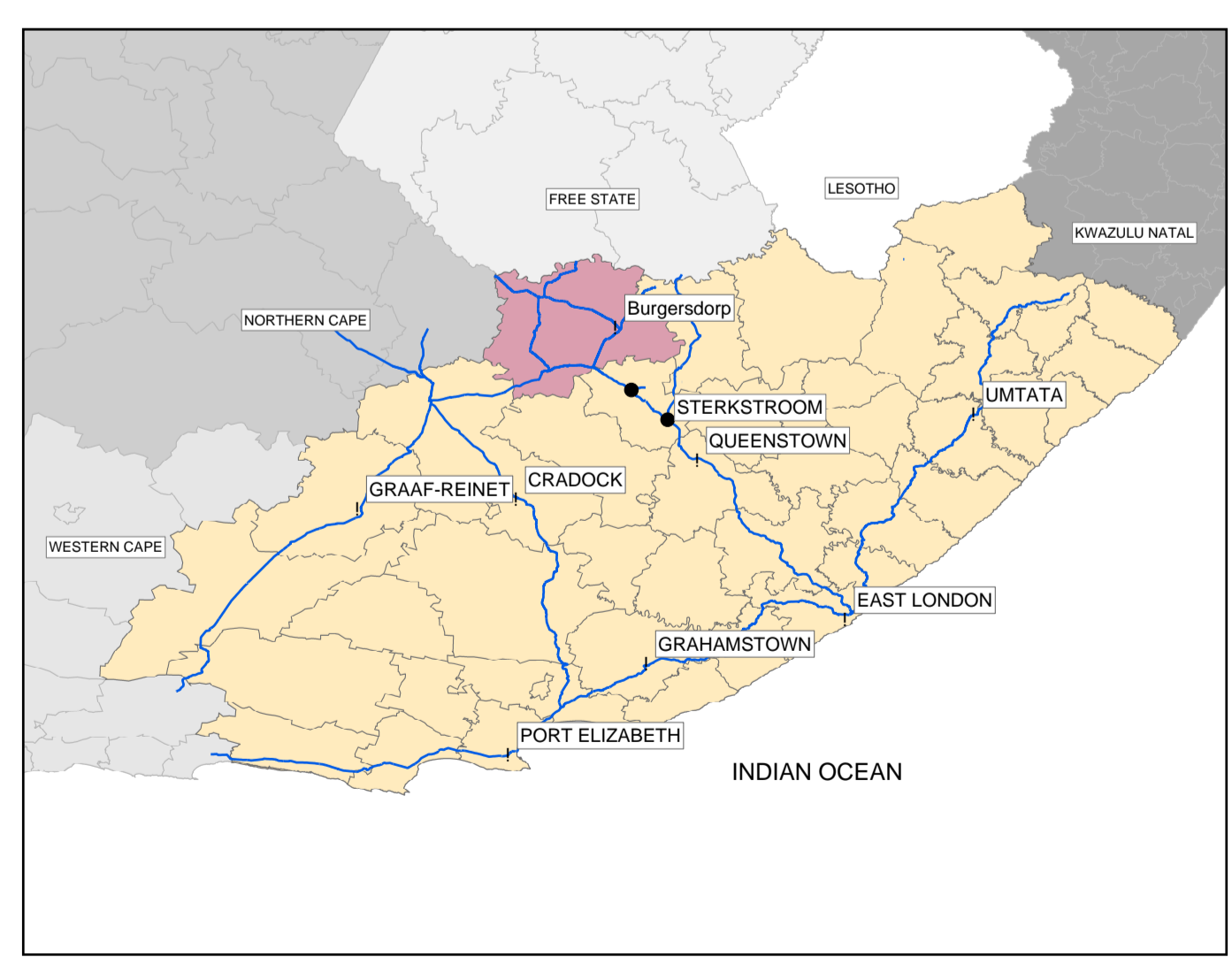
- Agricultural 1 (Agricultural)
- Residential 1 (Dwelling Units)
- Residential 3 (Town House)
- Residential 4
- Residential 5
- Business 1 (Business)
- Business 5 (Service Station)
- Industrial 1 (Industry)
- Institutional 1 (Place of Instruction)
- Institutional 2 (Place of Worship)
- Institutional 3 (Institution)
- Open Space 1 (Public Open Space)
- Open Space 2 (Sportfield ,Cemetery)
- Authority (Authority use)
- Transportation 1 (Transport)

TOWN PLANNING SCHEME (Act 4 of 1984)
 PROMULGATED IN TERMS OF PN 733 OF 22 SEPTEMBER 1989 (ACT 4 OF 1984)

- Burgersdorp Act 4 Boundary
- Residential 1 (Dwelling Units)
- Business 1 (Business)
- Institutional 1 (Place of Instruction)
- Institutional 2 (Place of Worship)
- Institutional 3 (Institution)
- Open Space 1 (Public Open Space)
- Open Space 2 (Sportfield ,Cemetery)
- Authority (Authority use)
- Undetermined (None)

- Contours
- Drainage Features
- Stormberg Spruit
- Old Commonage Boundary

Zonings based on approved Layout Plans and In-situ Land Use Survey (June 2006).
 Urban Dynamics makes no warranty of any kind with regard to the data and shall not be held reliable in any event for any incidental or consequential damages in connection with or arising out of the use of this data. The data remains the sole property of the Local Municipality. Zoning Certificates should be issued by the



Date: August 2006 (Working Drawing 2)
 Dwg Ref: D:\GIS\Ukahlamba DM\Gariep
 Created by: Morné Pretorius

