



TOP SOON
View Now

**TROPPEZ**
RESIDENCES



Approved code: AC/027/2015
Issued date: 30/1/2015

Prepare by ST C&H JB Task Force

FREEHOLD
@ S\$ 220,000 Onward



TYPE A

1 Bedroom
689 sf平方尺 (64.01 sm平方米)
Block A&B Level 7-36



TYPE B

2 Bedrooms
958 sf平方尺 (89 sm平方米)
Block A&B Level 6-36



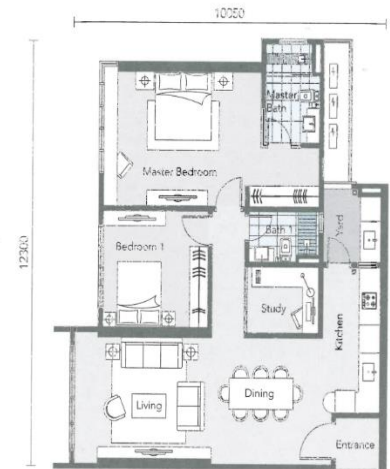
TYPE C

2+1 Bedrooms
1163 sf平方尺 (108.04 sm平方米)
Block A&B Level 12-20, 28-36



TYPE C1

2+1 Bedrooms
1163 sf平方尺 (108.04 sm平方米)
Block A&B Level 6-12, 20-24, 33-36



TYPE B1

2 Bedrooms
1012 sf平方尺 (94.01 sm平方米)
Block A&B Level 6-22, 25-33



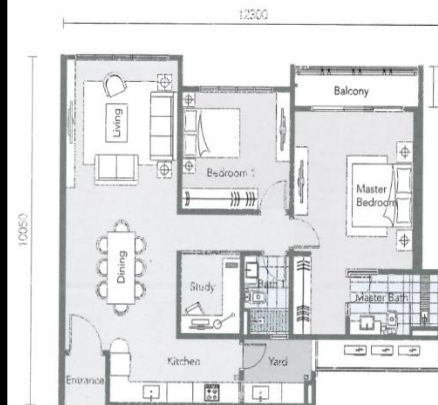
TYPE B2

2 Bedrooms
1044 sf平方尺 (96.99 sm平方米)
Block A&B Level 17-21, 26-31



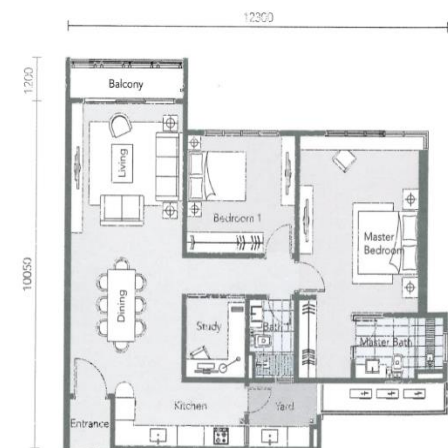
TYPE C2

2+1 Bedrooms
1184 sf平方尺 (109.99 sm平方米)
Block A&B Level 21-32



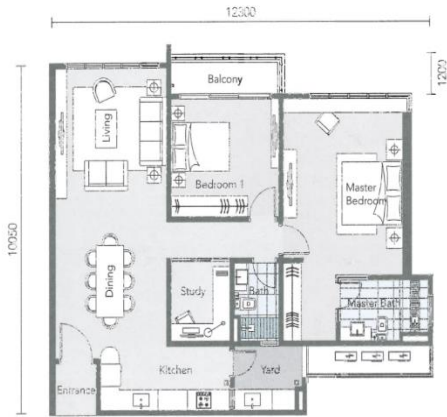
TYPE C3

2+1 Bedrooms
1206 sf平方尺 (112.04 sm平方米)
Block A&B Level 6-11



TYPE C4

2+1 Bedrooms
1206 sf 平方米 (112.04 sm 平方米)
Block A&B Level 6-15, 21-27



TYPE C5

2+1 Bedrooms
1206 sf 平方米 (112.04 sm 平方米)
Block A&B Level 13-19



TYPE S1

1 Bedroom Studio
463 sf 平方米 (43.01 sm 平方米)
Block C Level 6-28



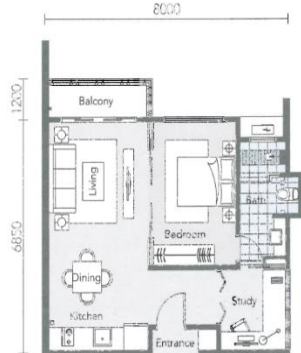
TYPE S2

1 Bedroom Studio
495 sf 平方米 (45.98 sm 平方米)
Block C Level 8-24



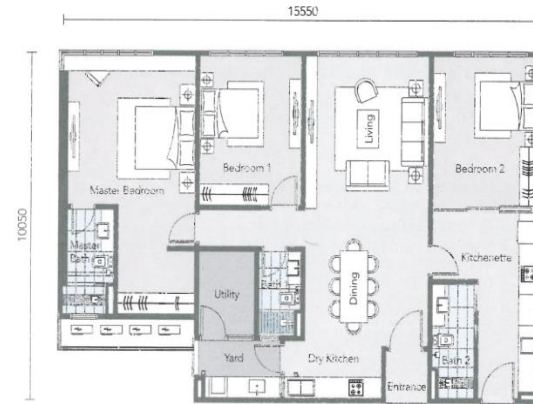
TYPE S3

1 Bedroom
646 sf 平方米 (60.01 sm 平方米)
Block C Level 6-28



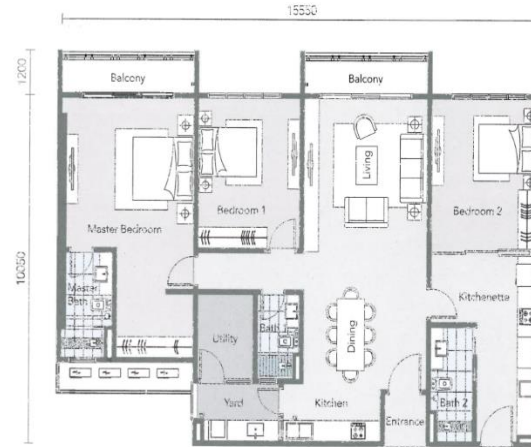
TYPE D

3+1 Bedrooms
1615 sf 平方米 (150.03 sm 平方米)
Block A&B Level 34-36



TYPE D2

3+1 Bedrooms
1722 sf 平方米 (159.97 sm 平方米)
Block A&B Level 10-16



TYPE D3

3+1 Bedrooms
1663 sf 平方米 (154.96 sm 平方米)
Block A&B Level 6-9, 17-33



Unbeatable Connectivity 独一无二的连通性

Tropicana Danga Bay is located within the prime 450-acre Danga Bay Waterfront City in Iskandar Malaysia. A breeze away from Johor Bahru city, it has a ready catchment population of 1.3million people. The close proximity to Singapore has opened up the master plan to greater market reach, making it the most desirable place to stay or invest.

金海湾丽阳位于总面积450英亩的马来西亚依斯干达金海湾，毗邻拥有130万人口的新山市，且临近新加坡，拥有更大的市场范围，因此成为最令人向往的居所和投资选择。



10 Minutes 10分钟
to Singapore via Causeway
通过兀兰关卡到达新加坡

15 Minutes 15分钟
to LEGOLAND & Nusajaya

20 Minutes 20分钟
to Singapore via the Second Link
通过第二通道到达新加坡

90 Minutes 90分钟
S'pore-JB-KL High Speed Rail in 2020
新加坡-新山-吉隆坡高铁(2020)

JB-S'pore MRT 新山-新加坡地铁
coming soon in 2018
2018 年建成

Master Site Plan 发展蓝图



FREEHOLD
@ S\$ 220,000 Onward

- A** Tropez Residences
- B** Bora Residences
- C** Luxury Brand Shopping Mall 海滨购物广场
- D** Future Development 未来发展计划
- E** Waterfront Central Park 湖畔公园

Please Call

Daphne Wong	9188 9192	CEA Reg no : R 023624E
Joyce Kuah	9677 3900	CEA Reg no : R 023278I
Ricky Teo	9387 4813	CEA Reg no : R 023299A
Sukhvinder Singh	8430 0030	CEA Reg no : R 023334C
Susan Quah	9735 1105	CEA Reg no : R 023084J
Shawn Yim	9695 4627	CEA Reg no : R 049796J



Simon Tong 董庆宠

+65-90261123

Senior Division Director 高级资深董事

CEA Reg No: R023171E