



The MERIDIN  
@ MEDINI

*Another Lifestyle Development brought to you by*

Meridin SOVO

# Location Map



# Approx. Travel Time from Meridin @ Medini

## Accessibility is Second to None

- Second Link CIQ
- Coastal Highway
- Eastern Dispersal Link
- Johor Bahru East Coast Highway
- Senai-Desaru Expressway
- Johor Bahru Inner Ring Road
- Jalan Skudai Interchange
- Proposed Rail Transit System linking Johor Bahru and Singapore by 2018

## Surrounded by Exciting Leisure Destinations

- Legoland® Malaysia - 4 min
- Puteri Harbour - 7 min
- Family Indoor Theme Park
- Johor Premium Outlet - 19 min
- Medini Lifestyle Mall - 3min
- International Destination Resorts
- Bio-XCell - Biotechnology Park and Ecosystem - 10 min

## World-Class Amenities & International Destinations

- Singapore City Center - 40 min
- Changi Airport - 45 min
- EduCity@Iskandar - 5 min
- Upcoming Medini Business financial hub - 5 min
- Columbia Asia Hospital - 12 min
- Upcoming Gleneagles Medini Hospital - 4 min
- Senai International Airport - 25 min
- Kota Iskandar - 3 min

# Meridin@Medini Phase 2 Project Brief

*Integrated purpose built development with a “Live, Work, Relax and Rejuvenate” concept.*

*A mixed development comprises Condominiums, Serviced Suites, SOVO, Lifestyle Retail & Office Towers.*

## ***Phase 2 : Meridin Sovo, Meridin Suites & Meridin Retail***

SoVo (small office versatile office), Service Suites & Podium Retail Lots

Tower A : 35 Storey Meridin SoVo	:	583 units
Tower B : 27 Storey Meridin Suites	:	322 units
Tower C : 27 Storey Meridin Suites	:	322 units
Podium : 4 storey Meridin Retail Podium	:	<u>188 units</u>
Total	:	<u>1415 units</u>

# Development Components

<b>Tower</b>	<b>Unit</b>	<b>Percentage %</b>
<b>Tower A (35storey)</b>	<b>583</b>	<b>100%</b>
Studio	424	72.7
1 bedroom	42	7.2
2 bedroom	104	17.9
4 bedroom	13	2.2
<b>Tower B (27storey)</b>	<b>322</b>	<b>100%</b>
Studio	161	50.0
1 bedroom	107	33.2
2 bedroom	54	16.8
<b>Tower C (27storey)</b>	<b>322</b>	<b>100%</b>
Studio	161	50.0
1 bedroom	107	33.2
2 bedroom	54	16.8
<b>Retail (4 storey)</b>	<b>188</b>	<b>100%</b>



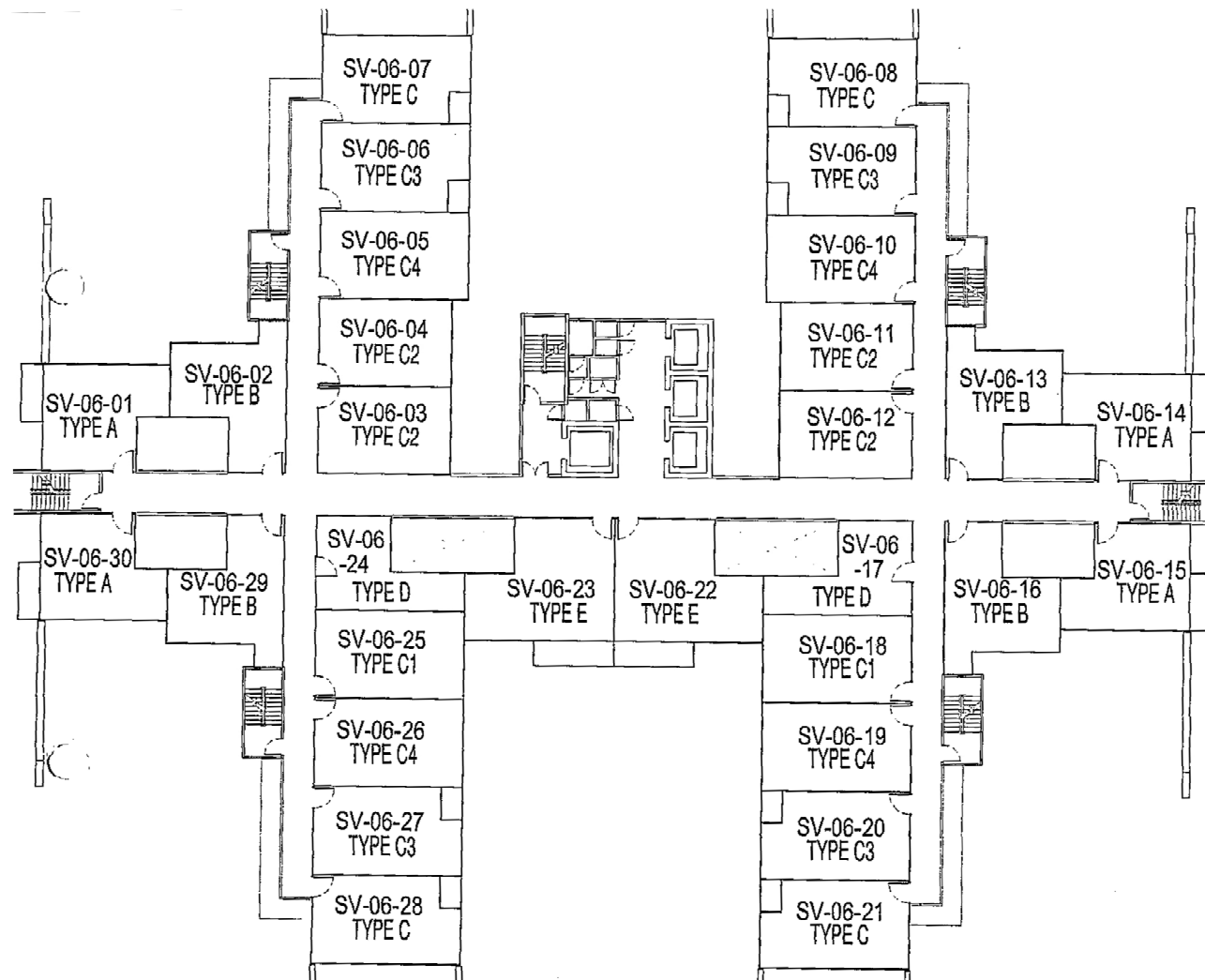
# Meridin SOVO (Tower A) View



## Meridin SOVO (Tower A) Common facilities

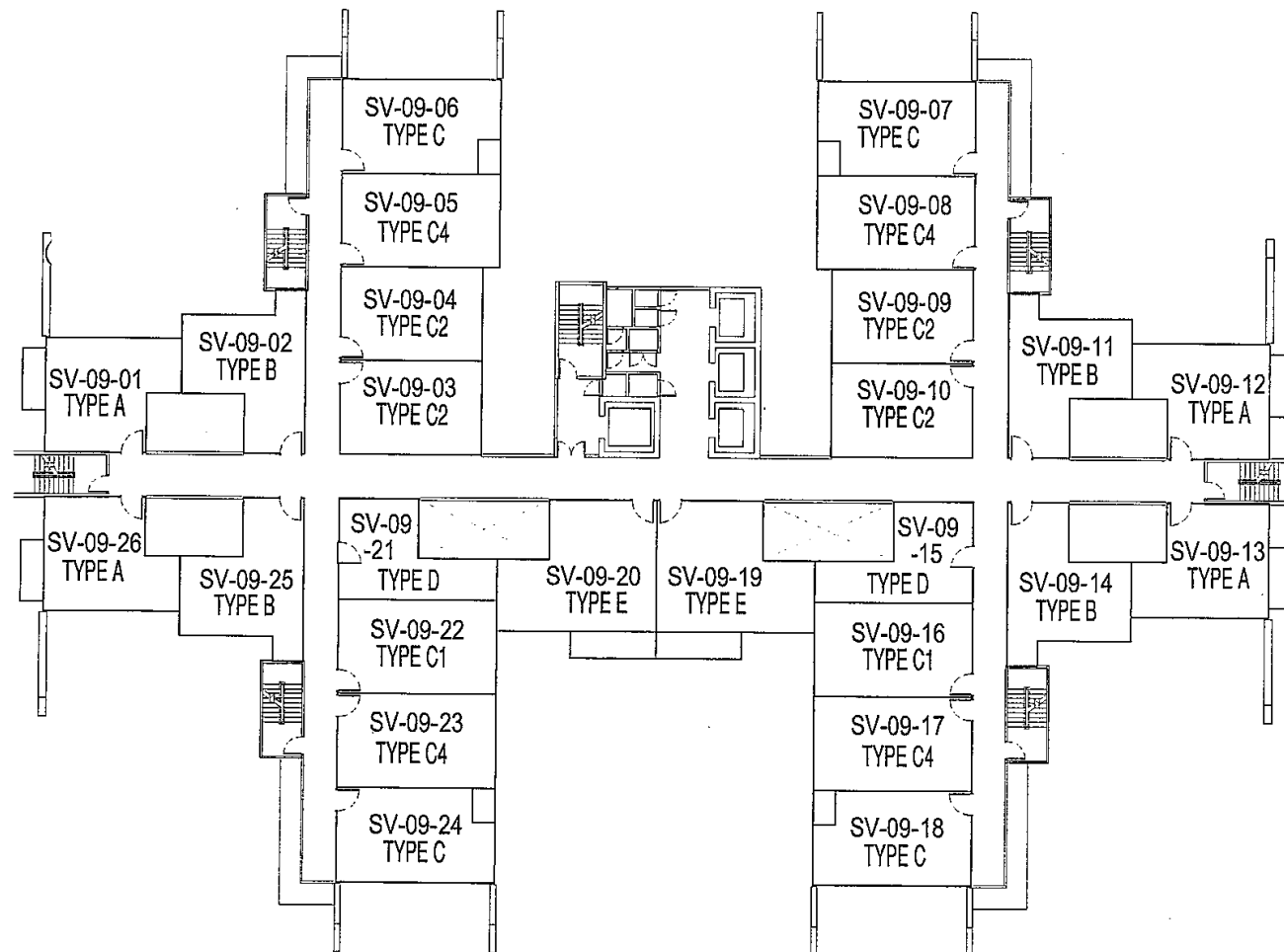
1. Swimming Pool
2. Aqua Gym
3. Multi-function room
4. Gymnasium
5. Childrens' Play area
6. Reflexology Path
7. Outdoor Gym
8. Space for Kids room
9. Space for Reading room
10. BBQ area
11. Lawn
12. Space for Aerobics/Taichi
13. Surau (Male & Female)
14. Management office
15. Changing rooms (Male & Female)
16. Tennis Court

# Meridin SOVO (Tower A) Floor Plan (Level 6 - 8)

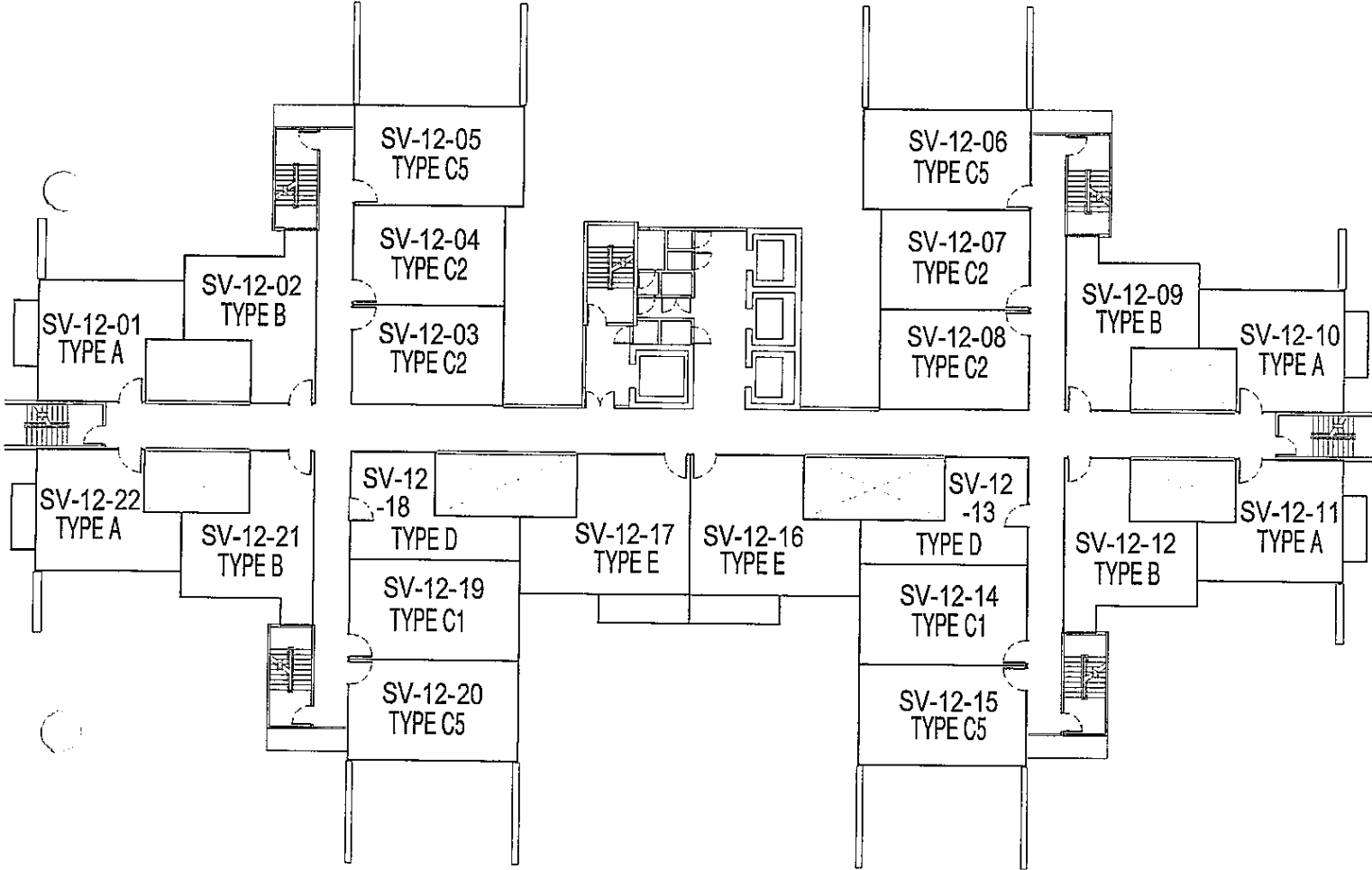




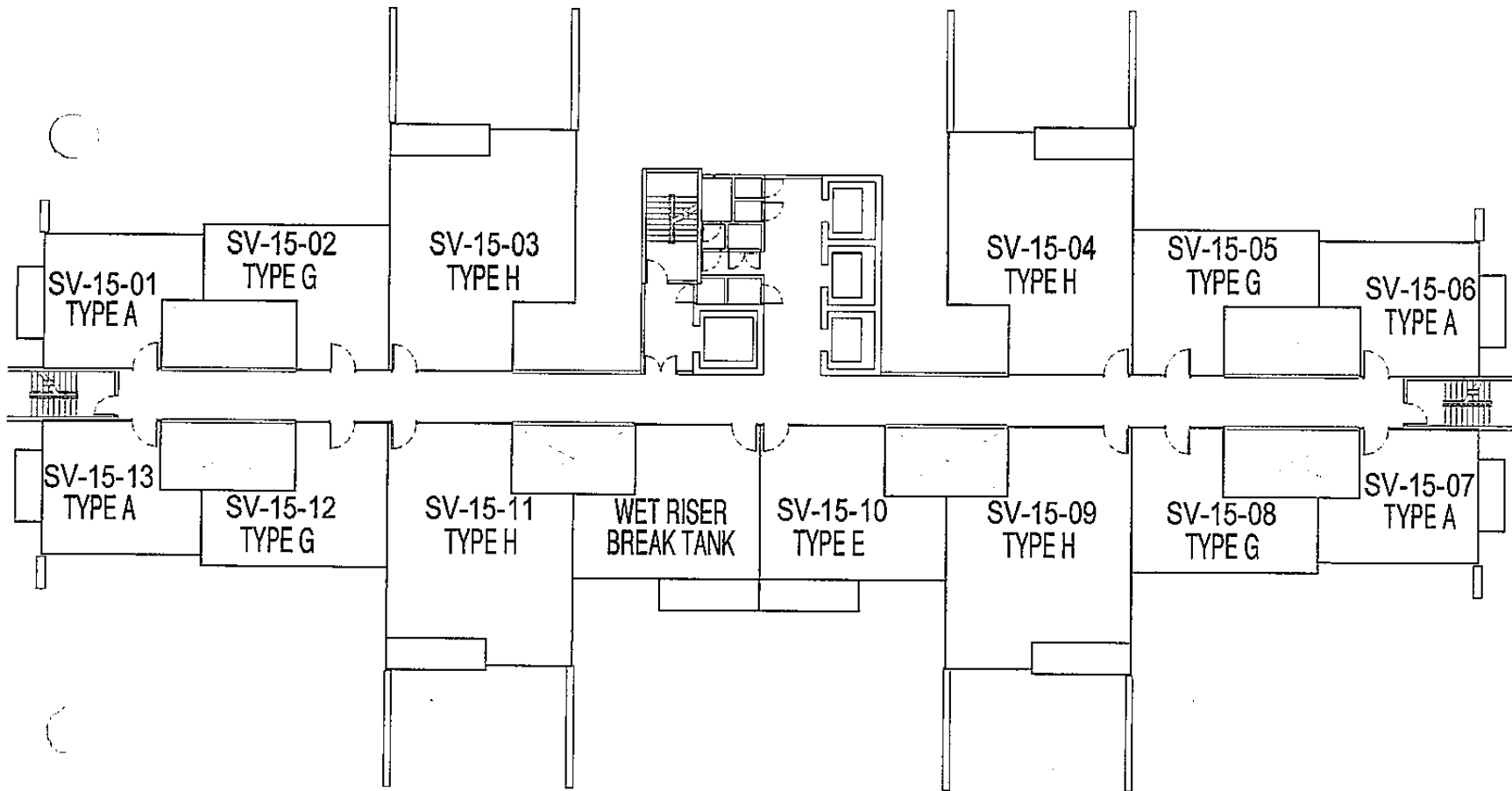
# Meridin SOVO (Tower A) Floor Plan (Level 9 – 11)



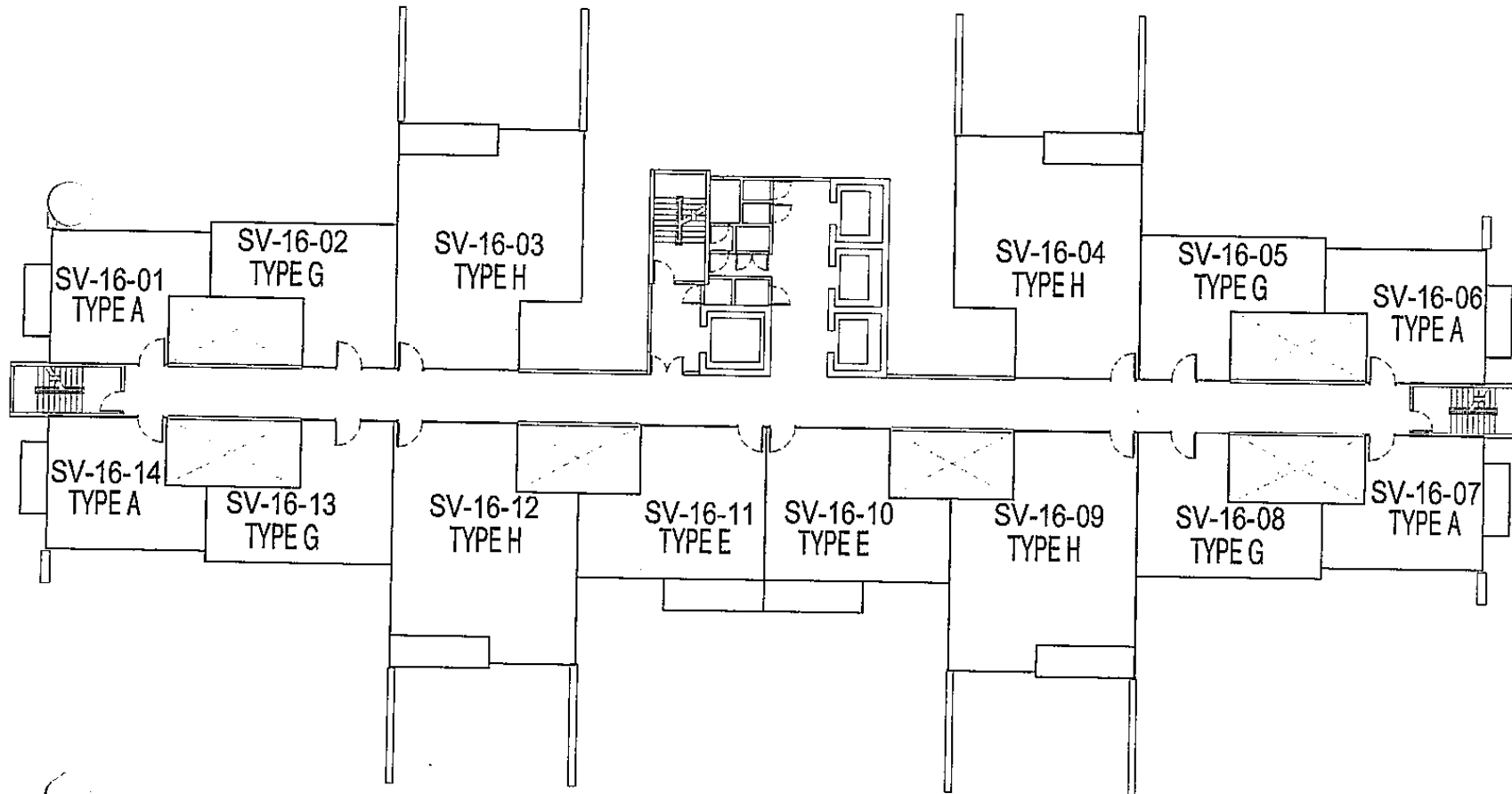
# Meridin SOVO (Tower A) Floor Plan (Level 12 – 14)



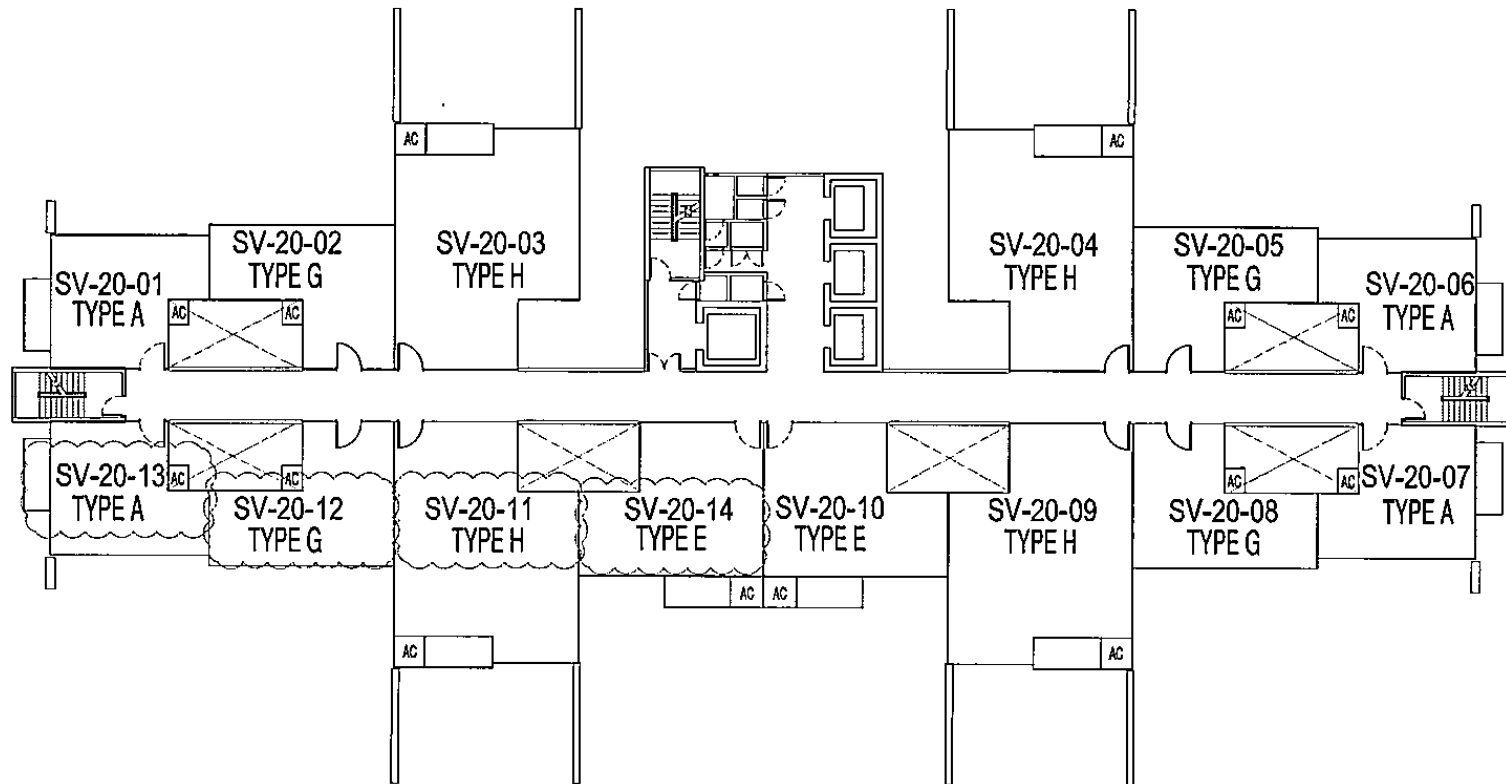
# Meridin SOVO (Tower A) Floor Plan (Level 15)



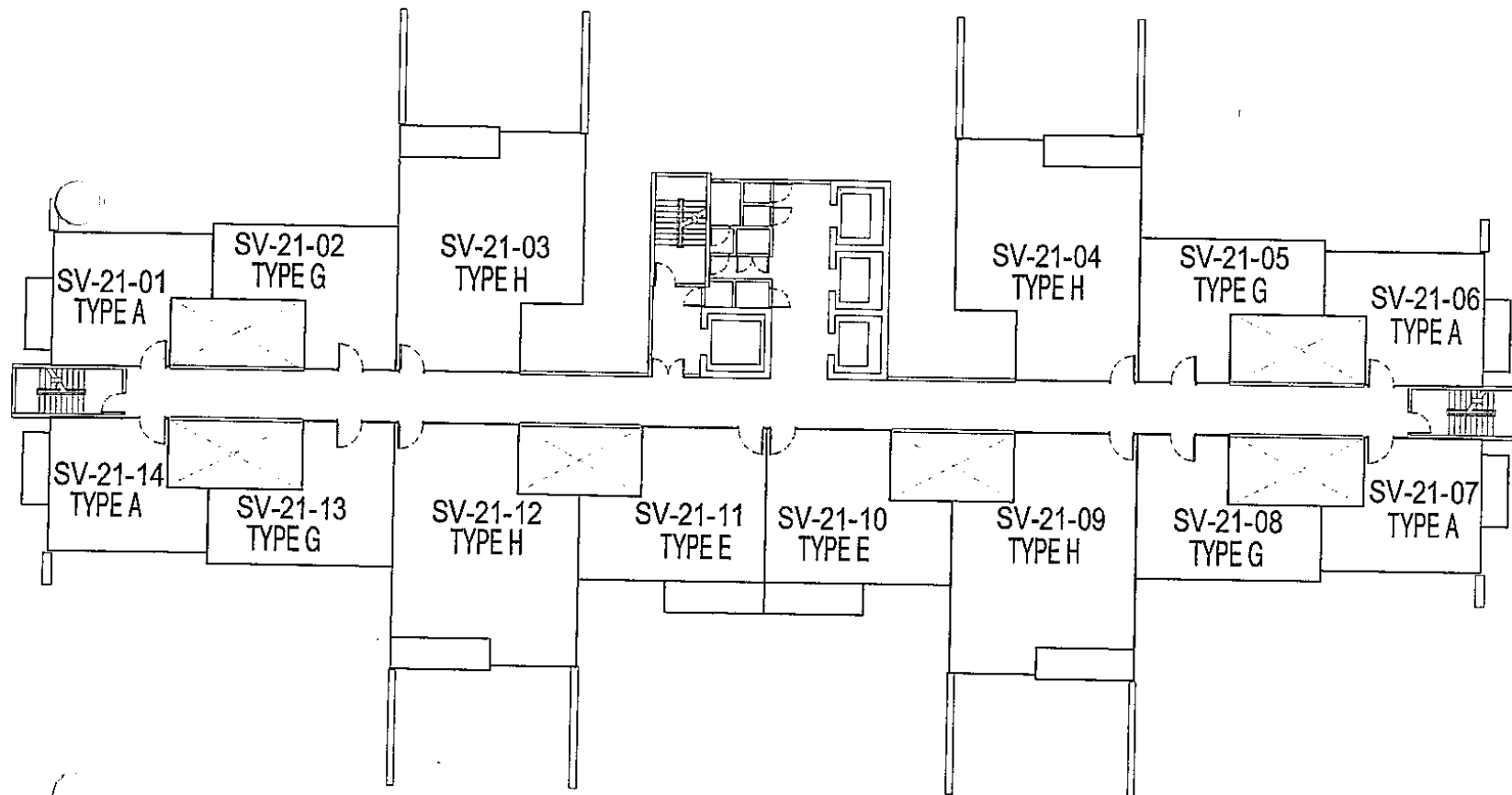
# Meridin SOVO (Tower A) Floor Plan (Level 16 -19)



# Meridin SOVO (Tower A) Floor Plan (Level 20)

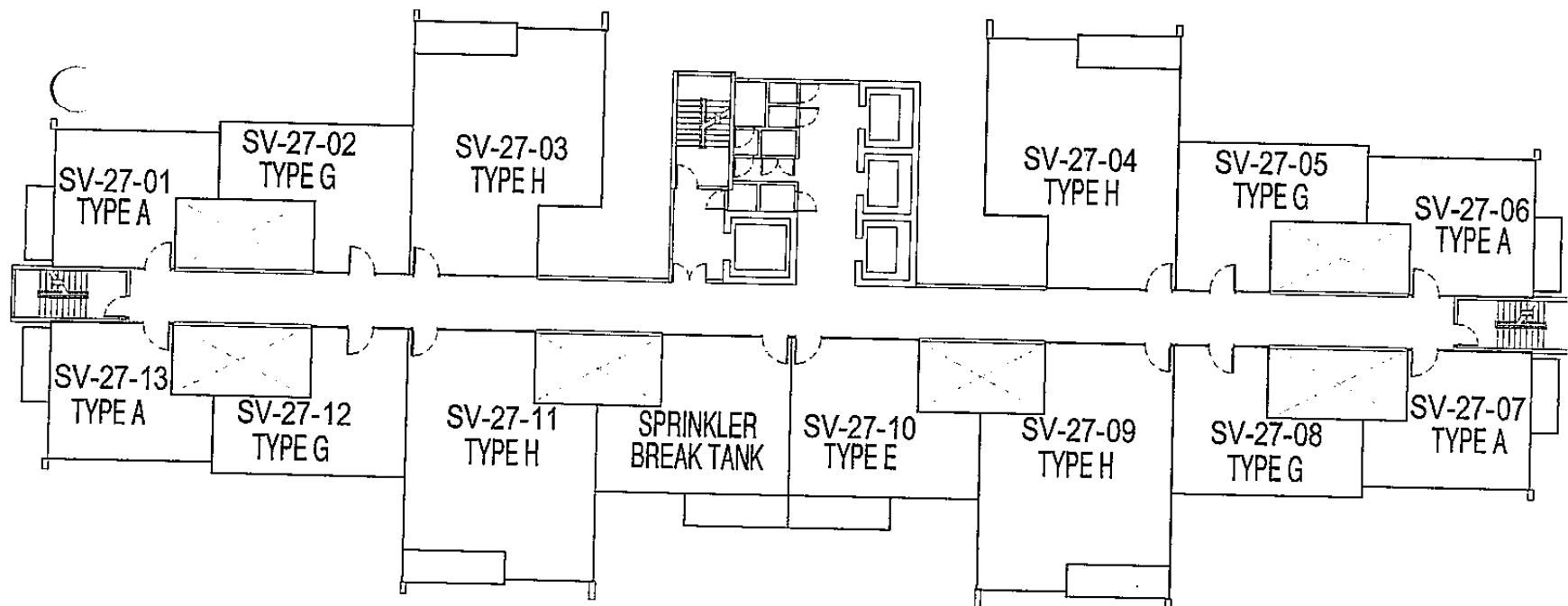


# Meridin SOVO (Tower A) Floor Plan (Level 21 - 26)

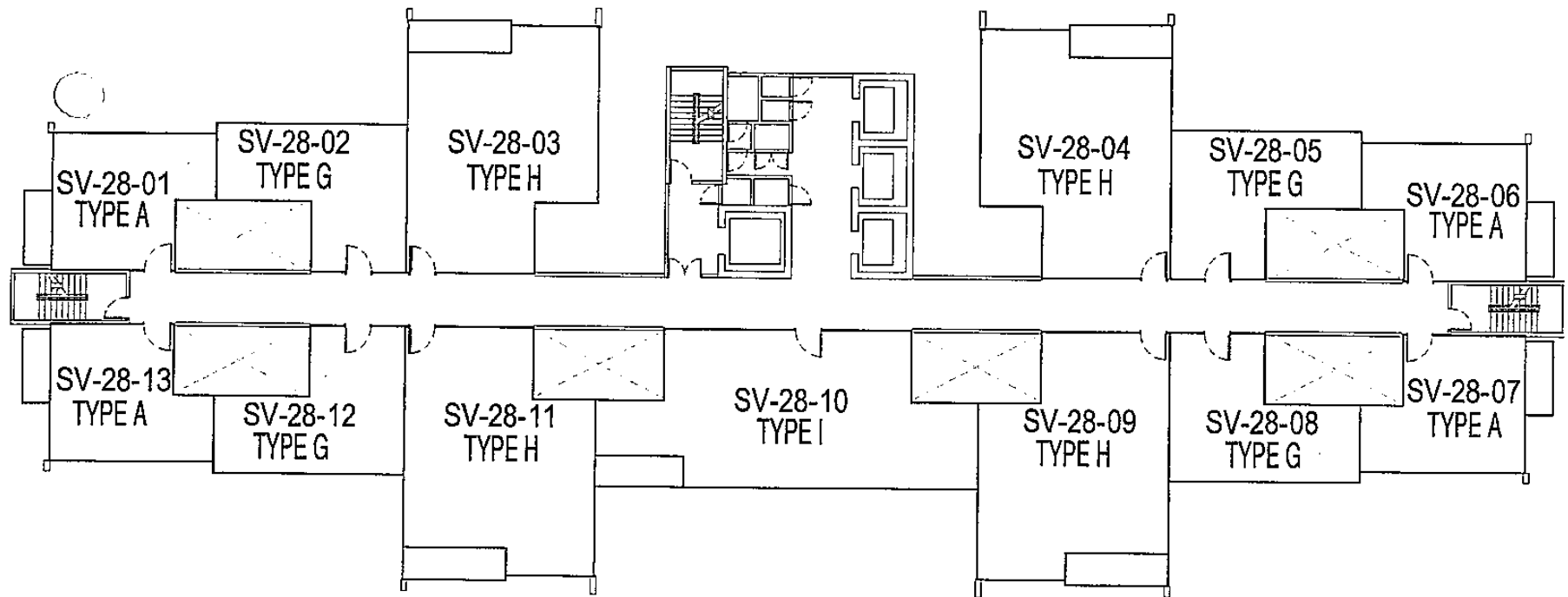




# Meridin SOVO (Tower A) Floor Plan (Level 27)



# Meridin SOVO (Tower A) Floor Plan (Level 28 - 40)

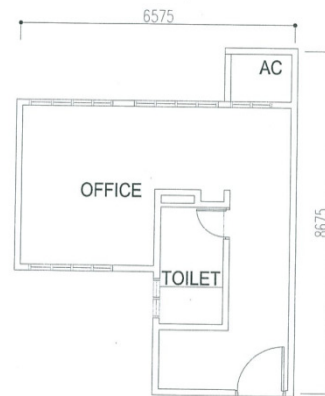


# Meridin SOVO (Tower A) Type

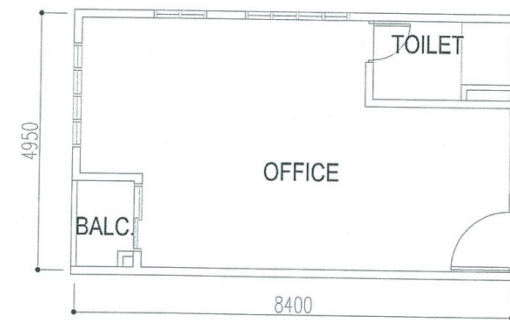
**TYPE A  
(Studio)**



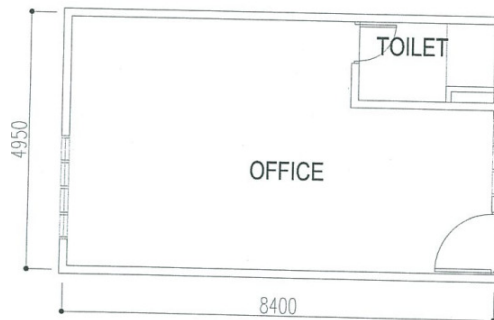
**TYPE B  
(Studio)**



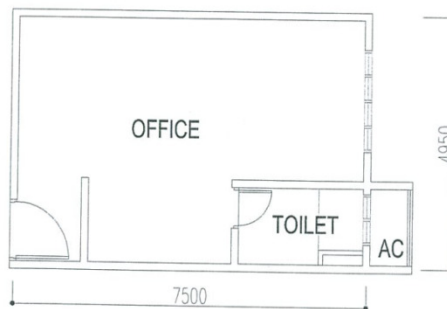
**TYPE C  
(Studio)**



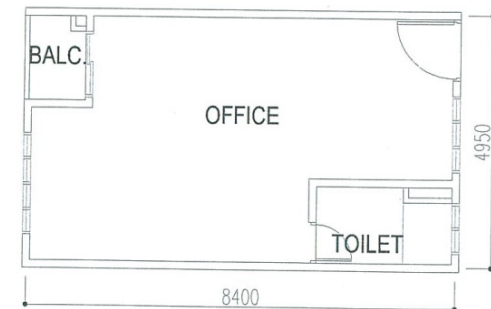
**TYPE C1  
(Studio)**



**TYPE C2  
(Studio)**

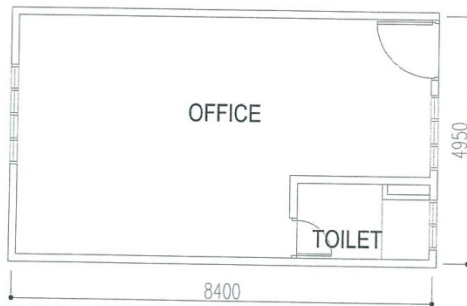


**TYPE C3  
(Studio)**

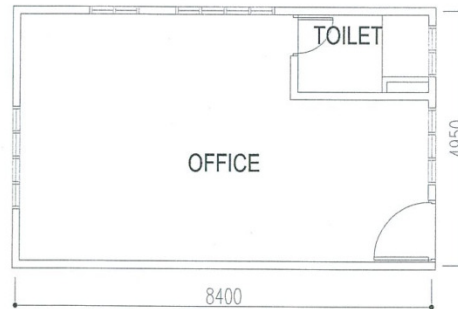


# Meridin SOVO (Tower A) Type

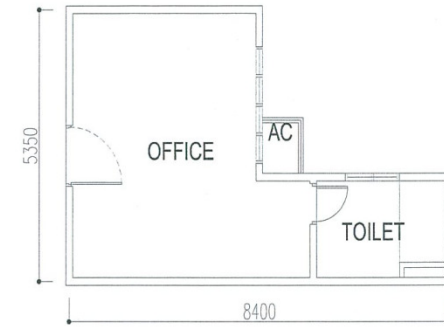
**TYPE C4  
(Studio)**



**TYPE C5  
(Studio)**



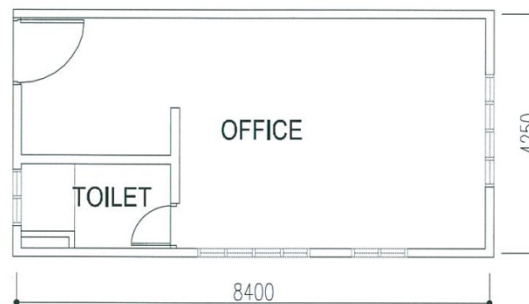
**TYPE D  
(Studio)**



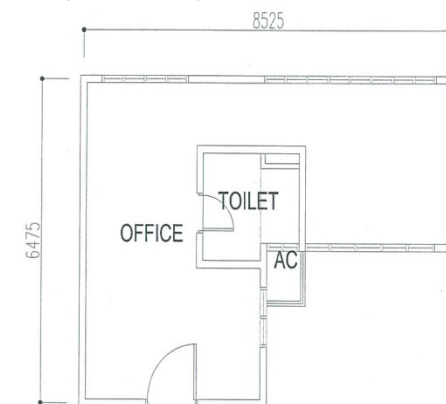
**TYPE E  
(1 room)**



**TYPE F  
(Studio)**



**TYPE G  
(Studio)**

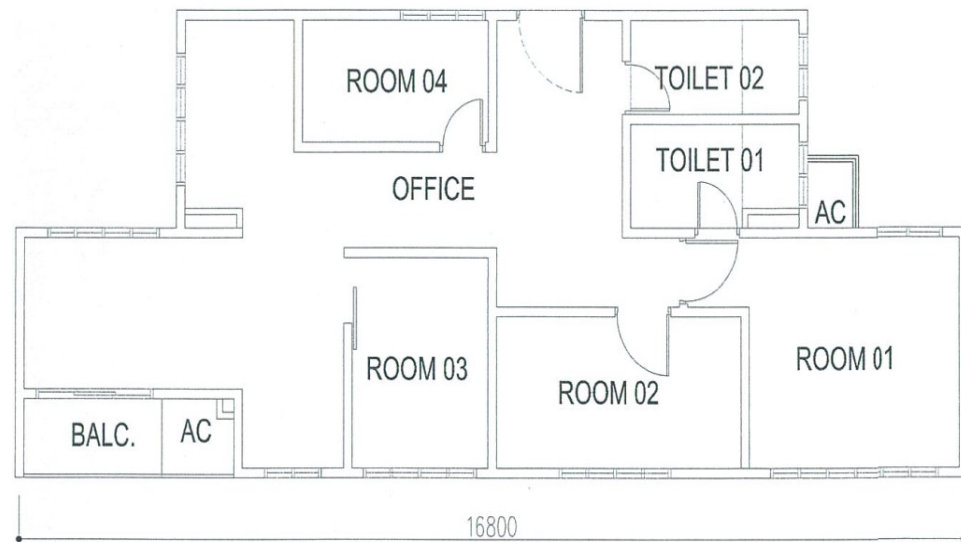


# Meridin SOVO (Tower A) Type

**TYPE H**  
(2 rooms)



**TYPE I**  
(4 rooms)



# The Special Incentive (Extended to 31 Dec 2025)

Businesses (IDR Status Companies)
<ul style="list-style-type: none"><li>• 10 year income tax exemption* OR</li><li>• Investment tax allowances of 100% for 5 years</li><li>• Exemption from RPGT</li><li>• Import duty/sales tax exemption</li></ul>

Purchasers
<ul style="list-style-type: none"><li>• No RM1,000,000 threshold for foreigners</li><li>• No foreign quota</li><li>• No Bumi Lot</li></ul>

**\* IDR-status 9 qualifying activities:**

Electrical & Electronic; Petrochemical & Oleochemical; Food & Agro-processing, Logistic; Tourism; Health; Education; Financial; ICT & Creative Industry



# Please Call

## Simon Tong 董庆宠

+65-90261123

Senior Division Director 高级资深董事



CEA Reg No: R023171E