



# Clarion River Water Trail

## Map & Guide

Water trails are recreational waterways on a lake, river, or ocean between specific points, containing access points and day-use and/or camping sites for the boating public. Water trails emphasize low-impact use and promote stewardship of the resources. Explore this unique Pennsylvania water trail.



### GENERAL INFORMATION

The Clarion River is one of the major tributaries of the Allegheny River and is therefore within the Ohio River watershed. The Clarion River enters the Allegheny River at River Mile 85 (upstream of Pittsburgh).

The Clarion River, once believed to be the most polluted river in Pennsylvania, is now well on its way to full recovery. Today, the river is recovering from degradation because many people from local industry, government and nonprofit organizations have been working together to restore it for all to enjoy. The main-stem Clarion River's most recovered portion is in its middle section, from the area of Hallton to just above the Piney Dam impoundment near Clarion.

Today, the river meanders through narrow valleys of hardwood forests. Wildlife, intermittent riffles and rock outcrops provide inspiring scenery. Outstanding features include a nationally recognized area of virgin white pine and hemlock, a federally designated 51.7-mile stretch of Wild & Scenic River, and a prehistoric animal footprint.

### NATIONAL WILD & SCENIC RIVER

In 1996, 51.7 miles of the Clarion River were designated a component of the Wild & Scenic Rivers System by Congress. This list of rivers was established to recognize outstanding examples of the nation's free-flowing rivers and to raise public awareness of the importance of America's river resources. Two sections totaling 17 miles, from Portland Mills to Irwin Run, and Cooksburg to the Piney Dam backwaters, qualify as "scenic." The remaining 34.7 miles qualify as "recreational."



### FLOATING THE RIVER

The Clarion River is considered a Class I river. Its characteristics make the Clarion a desirable river for canoeists of all abilities. On a scale of I-VI, the I denotes fast-moving water with riffles and small waves; few or no obstructions, all obvious and easily missed with little training; risk to swimmer is slight; and self-rescue is easy. Keep in mind that classifications can change with high water levels.

The best time to float the Clarion River is in early summer. The normal summer flow of the Clarion River along the length of the trail accommodates small, shallow-draft powered and non-powered watercraft. In late summer, the river becomes shallow at times and boat bottoms can drag on the streambed. Your float time will vary according to the season and weather. Contact the U.S. Army Corps of Engineers (USACE) for updated information about river conditions.

For more information about the Clarion River's current conditions, visit the USACE web site for an hourly report on the Upper Allegheny River basin, which includes the Clarion, at <http://www.lrp.usace.army.mil/current/ua.html>. Another excellent web site for stream levels (high, low or canoeable) is <http://www.learningdesign.com/cgi-local/rivergage>.

For more information about the flow of the river at the Wilcox, Johnsonburg Ridgway, Cooksburg and Piney gage sites, visit the following web site: <http://waterdata.usgs.gov/pa/nwis/rt>.

### STEWARDSHIP

Help care for the land, water and cultural resources along the Clarion River Water Trail by respecting wildlife, nature and other recreationists. "Leave No Trace," a national outdoor ethics program, provides some guidelines to minimize your impact. For more information about "Leave No Trace" outdoor ethics, visit [www.lnt.org](http://www.lnt.org).

#### Leave no trace for camping and day use:

1. Plan and prepare.
2. Travel and camp on durable surfaces.
3. Dispose of waste properly.
4. Leave what you find.
5. Minimize campfires.
6. Respect wildlife.
7. Be considerate of other visitors.

### For your safety and enjoyment:

- Always wear a life jacket.
- Obtain proper instruction in boating skills.
- Know fishing and boating regulations.
- Be prepared for river hazards.
- Carry proper equipment.

### PENNSYLVANIA BOATING REGULATIONS

- One wearable, Coast Guard-approved personal flotation device (PFD or life jacket) in serviceable condition and of the appropriate size is required for each person in your boat. If your boat is 16 feet or longer, one throwable device (seat cushion or ring buoy) is required. Canoes and kayaks, regardless of length, are not required to carry a throwable device.
- Life jackets must be worn by all children 12 years old and younger on all boats 20 feet or less in length while under way, and on all canoes and kayaks. Others are strongly encouraged to wear a PFD at all times on the water.
- All boats must display an anchor light (a white light visible 360 degrees) when at anchor between sunset and sunrise. Boats can use a lantern or clip-on battery-powered unit to meet this requirement.
- All powered boats must show running lights between sunset and sunrise. Between sunset and sunrise, unpowered boats must carry a white light (visible 360 degrees), installed or portable, ready to be displayed in time to avoid a collision.
- All motorboats are required to carry a sound-producing mechanical device audible for a half-mile. Athletic whistles meet this requirement.
- All motorboats must be registered, regardless of where they launch.
- Unpowered boats (canoes, kayaks, rowboats, rafts) using Pennsylvania Fish & Boat Commission access areas must either be registered OR display a valid launch permit. Launch permits can be purchased on the web at [www.fish.state.pa.us](http://www.fish.state.pa.us). Click the "Outdoor Shop" icon.
- Operating watercraft, including canoes, kayaks, and rafts, under the influence of alcohol or drugs is illegal. The law is strongly enforced for user safety. For further information on boating regulations, contact the Pennsylvania Fish & Boat Commission at [www.fish.state.pa.us](http://www.fish.state.pa.us).



### PADDLING SAFETY TIPS

- Wear your life jacket. Some 80 percent of all recreational boating fatalities happen to people who are not wearing a life jacket.
- Expect to get wet. Even the best paddlers sometimes capsizes or swamp their boats. Bring extra clothing in a waterproof bag.
- Be prepared to swim. If the water looks too hazardous to swim in, don't go paddling.
- If you capsize, hold on to your boat, unless it presents a life-threatening situation. If floating in current, position yourself on the upstream side of the capsized boat.
- Scout ahead whenever possible. Know the river. Avoid surprises.
- Be prepared for the weather. Get a forecast before you go. Sudden winds and rain are common and can turn a pleasant trip into a risky, unpleasant venture.
- Wear wading shoes or tennis shoes with wool, polypropylene, pile or neoprene socks.
- Never take your boat over a low-head dam.
- Portage (carry) your boat around any section of water about which you feel uncertain.
- Never boat alone. Boating safety increases with numbers.
- Keep painter lines (ropes tied to the bow) and any other ropes coiled and secured.
- Never tie a rope to yourself or to another paddler, especially a child.
- Kneel to increase your stability before entering rougher water, like a rapid.
- If you collide with an obstruction, lean toward it. This will usually prevent your capsizing or flooding the boat.
- File a float plan with a reliable person, indicating where you are going and when you will return. Remember to contact the person when you have returned safely.



### RESPECT THE PRIVACY & RIGHTS OF LANDOWNERS

Plan and make stops on shorelines open to the public. Although much of the shoreline along the center segment of the river is owned by a public entity, other shoreline segments along the river trail are in private ownership. Assume that land not marked as state forest, state parks, state game land, Allegheny National Forest, or Western Pennsylvania Conservancy is owned privately. Respect the privacy and rights of landowners by obtaining permission before entering any privately owned land. Avoid boisterous behavior and making loud noises. Share the same courtesy that you would want.



### ALONG THE WAY—UPPER CLARION RIVER

**East Branch Lake:** The towns of Instantan, Straight and Bergonot were flooded when the dam on the East Branch Clarion River was built for flood control purposes in 1952. This dam created East Branch Lake, measuring approximately 7 miles in length. The lake allows powerboats, fishing, ice fishing and ice boating. The U.S. Army Corps of Engineers operates a 41-site campground near the East Branch Dam. Just below the dam is the East Branch River Restaurant, featuring a wood deck with a gorgeous view of a waterfall on the river below.

**Glen Hazel:** A small town purchased by the Benjamin F. Hazelton Company of Bradford, a lumber company. This lumber camp thrived until the turn of the century when Piney Dam was built and rafting the Clarion River ended.

**A. Dam at Bendigo State Park:** **WARNING!** Do not attempt to float over this dam! This dam was originally built to provide a swimming area for visitors. It now serves as a popular fishing site since the swimming pool and facilities were built adjacent to the dam. Safe portage is on the left bank in the park.

**Wilcox:** With a population of about 900, Wilcox is located north of Johnsonburg along the West Branch of the Clarion River in Jones Township, Elk County. This town boasts the Winery at Wilcox and is located close to Bendigo State Park and Elk State Park.

**Johnsonburg:** Where the East and West branches of the Clarion River join. This town is dominated by a large paper mill, once considered one of the biggest polluters of the river until it was sold to Willamette Industries, Inc. Extensive renovation and expansion of the mill have had a tremendous effect on the Clarion River's water quality. Weyerhaeuser, one of the world's largest forest products companies, most recently purchased the paper mill.

**B. Dams at Johnsonburg:** **CAUTION!** There are two industrial dams in Johnsonburg. Do not attempt to float over these dams. Scout ahead to determine the best portage route. Putting in below the dams is recommended.

**C. Whistletown Dam:** This dam is located at Whistletown, once a thriving lumbering community. The dam is breached and passable, but use caution.

**Ridgway:** Built in the late 1800s, buildings and homes in Ridgway display the grandeur of the Victorian Era. A stroll through the "Lily of the Valley" National Historic Register District gives visitors a sense of magnificent times gone by. Throughout the years, this little town of about 5,000 people has maintained its friendly small-town atmosphere. The area is graced with unique specialty shops, quaint restaurants, charming bed and breakfasts and motels. Whether you live here, or have never visited, you are always welcome.

**D. Love's Canoe Rental:** Just off U.S. Route 219 located on Main Street in downtown Ridgway, Pennsylvania, you'll find Love's Canoe Rental next to the Clarion River Bridge. Love's offers cross-country ski rentals and sales, canoe rentals and sales, bicycle rentals and repairs, bicycle sales (authorized Cannondale dealer), bicycle accessories, hunting supplies, reloading supplies, archery supplies, fishing supplies, live bait, ice fishing supplies, U.S. topographical maps, and camping supplies.

**E. Elk County Historical Society Center House and Robinson Museum:** The Elk County Historical Society (ECHS) has two buildings, an 1882 Victorian Home called the Center House, facing 109 Center Street, Ridgway, PA. The Robinson Museum is located just behind the Center House.

**F. Island Run Trout Nursery:** This cooperative trout nursery is located off of PA Route 949 below Ridgway and is a partnership of the Island Run Sportsmen (sponsor) and the PA Fish & Boat Commission.

**G. Idewild Cut Rapids:** **CAUTION!** Located just below the railroad trestle, these rapids vary by water level. You need not avoid or portage around these rapids at safe water levels, but be aware of them.

**Carman:** Carman is an old ghost town along the river near the mouth of Little Toby Creek. This town was once a meeting point for three railroads and the home of a large hotel.

**Croyland:** Croyland is an old ghost town near Carman along Little Toby Creek. After the logging era ended, the CCC established a camp near the former town.

**H. Little Toby Riffles:** The confluence of Little Toby Creek and the Clarion River creates an exciting short run of riffles.

**Portland Mills:** Still a viable community, this was once a large lumbering and tannery town with a population of 1,000.

**Campsite:** From Portland Mills, keep an eye out for the island with the tall white pines just as the water starts to pick up at the mini rapid above the bridge. An established campsite accommodating two to three tents and about six canoes can be found on the island just above the Arroyo Access.

**Arroyo:** The mill town was founded sometime in the 1830s as Beech Bottom. After a massive flood, the town was renamed Arroyo and a tannery was opened. A sawmill later opened and the Clarion River Railroad made a stop in the town. The town declined and was vacated in the 1930s. Today, tours of the ghost town are available. For more information, contact the Lumber Heritage Region.

**I. Rapid:** A small rapid can be found about a half-mile downstream from the Arroyo Access. This rapid is sometimes referred to as "Chassie Rapid," or "W Rapid." Keep an eye out for the upcoming X Y Z Rapids!

**J. X Y Z Rapids:** The short run down this section is a good chance for beginning whitewater kayakers to get the feel of an easy rapid in a comparatively safe environment. Tips for safety: Run "X" left; run "Y" right; run "Z" right. At "Y" Rapid is an established riverside campsite. This campsite is perhaps the largest in the immediate area. There is room for at least eight tents, with a nice cobble beach for landing canoes at normal water levels. There is also a smaller campsite almost at "Z" Rapid, accommodating about four tents.

**Irwintown:** Now a ghost town, Irwintown was a small logging community located at the mouth of Irwin Run from 1851 until the early 1880s.

**Hallton:** Hallton was once the site of several large industries including a major sawmill and chemical plant. Some permanent population remains, but the industries have vanished.

**Callen Run Railroad:** The Callen Run Railroad was the first recorded narrow-gauge logging railroad in the region. Constructed in 1864, the engine was assembled on site from a flat car and a steam engine.

**K. Heath Trout Nursery:** This is a cooperative trout nursery between the PA Fish & Boat Commission and the Heath Township Sportsmen's Club. It is located across the road from the Heath Access.

**L. Abandoned Pipeline Wave:** A wave created by an abandoned pipeline just upstream of the Belltown Bridge (closest access upstream is Heath Access) offers a bit of excitement for kayakers. It provides beginners with an opportunity to develop basic surfing skills and is considered one of the safest waves around. Canoeists should avoid this wave for safety by floating the opposite side of the river.

**Historic Belltown:** Once a small lumber and rafting town, the population here has dramatically decreased.

**M. Historic Loleta Campsite:** A community of nearly 1,000 residents in the late 1800s, this logging town later became a major CCC project. Today, this site is home to an Allegheny National Forest recreation area complete with snowmobile and hiking trails.

**N. Beartown Rocks:** Located in Clear Creek State Forest, this area offers a beautiful overlook view of the forest and contains many large boulders. Some climbing is required to reach the observation deck.

**Slipper Run Raft Hitch:** Like Blyson's Run Cut Stone site, raftmen used to tie their rafts to the hitch. For more stories about Clarion River raftmen adventures, see True Tales of the Clarion River, reprinted by the Clarion County Historical Society and the Elk County Historical Society in 2000 (originally printed in 1933 by The Clarion Republican).

**O. Cook Forest Canoe Rental – Clarington base:** This outfitter offers 4-mile, 6-mile and 10-mile trips from Clarington. Canoes, kayaks and innertubes can be rented.

### ALONG THE WAY—LOWER CLARION RIVER

**Clarington:** This little town along the Clarion River offers plenty of attractions including restaurants, cabins, lodges and amusements. It is located between Cook Forest State Park and Clear Creek State Park.

**Cooksburg:** This town along the Clarion River is next to Cook Forest State Park. It offers many attractions including a number of gift, antique and retail stores, lodges, bed and breakfasts, cabins and campsites, and amusements.

**P. Pale Whale Canoe Livery:** Located in Cooksburg, this is the largest canoe livery on the Clarion River in the heart of Cook Forest, with ample parking, clean restrooms and changing rooms. Cooksburg Dry Goods store and Cooksburg Cafe are on the premises for your canoeing supplies and snacks. Cabin, canoe, innertube and kayak rentals are available.

**Q. Cook Forest Canoe Rental – Cook Forest base:** This outfitter offers 4-mile, 10-mile and 16-mile trips from Cook Forest. Canoes, kayaks and innertubes can be rented.

**R. Cook Forest Fire Tower and Seneca Point Overlook:** The 80-foot fire tower built in 1929 gave firefighters a 15- to 20-mile view of the area. The tower was retired from service in 1966. Periodically, the box on top of the tower is open during interpretive programs. American Indians used the sandstone of the area to grind seeds and grains. Look for unnatural indentations in the stone leading to Seneca Point Overlook used for these "Indian mills." The Seneca Point site offers an excellent view of the Clarion River as you pass through the old-growth Seneca Natural Area and area with downed logs from a 1976 tornado.

**S. Sawmill Center for the Arts:** The Center is a non-profit craft organization located in the historic sawmill. Traditional crafts are on display and classes are available throughout the summer and fall for children and adults. The Verna Leith Sawmill Theater holds plays, musicals and other entertainment throughout the summer season.

**T. Hemlock Island:** Near the town of Gravel Lick, once a mill site, waterfalls are still visible from this island.

**Gravel Lick:** A North Country Trail trailhead is located in Gravel Lick at the bridge that crosses the Clarion River.

**U. Deep Water Lodge:** **CAUTION!** Drowning hazard here.

**V. Helen Historic Furnace:** Built in 1845, this cold-blast furnace was in operation until 1857. Helen Furnace was reconstructed in 1977 and is listed by the Pennsylvania Historical and Museum Commission.

**Blyson's Run Cut Stone Raft Historic Site:** In the past, timber was floated on rafts down the Clarion River to market. Raftmen used to tie up at Blyson's Run Cut Stone. You can still see the pole where they tied their rafts.

**W. Clarion County Historical Society Museum:** The museum is a white-pillared mansion built in 1874 by Thomas Sutton. John A. Dietz later purchased it in 1908. The museum contains an extensive collection of area historical artifacts. The Clarion Free Library located on Main Street has a booklet about a self-guided Clarion historical and architectural tour.

**X. Rapp Run Falls:** At the mouth of Rapp Run, a tributary to Toby Creek, you can view these beautiful cascading falls.

Boat Congestion on Piney Lake. **CAUTION!** Boat congestion on Piney Lake.

**Y. Piney Dam:** Piney Dam is a peaking hydropower generation facility owned by Reliant Energy, Inc. Piney Hydroelectric Station has been in continuous operation since it was constructed in 1924. The maximum height of the dam is 139 feet. The impounded lake extends 12 miles upstream of the dam. Because Piney Power Station is used for electric power generation, the flow downstream of Piney Dam is subject to continuous fluctuations during periods of generation. **CAUTION!** This means very unpredictable water levels for canoeists below the dam. Take-out is at the buoys on the left side of the river. Portage around the dam. Put back in about a half-mile downstream. The terrain is questionable, so scout this trip ahead of time. Call 814.226.8630 to obtain water release information.

**Z. Train Trestle and Tunnels:** The trestle and tunnels are located along an inactive portion of the Clarion secondary line of the Conrail line.

**Callensburg:** Callensburg is located along the Clarion River at the intersection of PA routes 368 and 58. The borough has a population of about 225.

**AA. Turnip Hole:** A deep-hole river feature. Foxburg, home of the American Golf Hall of Fame, this small town of approximately 300 is located along the Clarion River. It also boasts the Foxburg Inn, which overlooks the Allegheny River.



**BB. American Golf Hall of Fame:** Foxburg Country Club contains an American Golf Hall of Fame. Joseph M. Fox, who built the Foxburg Country Club, introduced golf to America. It is the oldest golf course in continuous use in the USA.

**Parker:** Located in Armstrong County along the western bank of the Allegheny River, this is the first city you would reach by floating beyond the Clarion River. You may not be surprised that it is the smallest city in the United States with a population of nearly 800.



## FISHING, CAMPING & HUNTING

The Clarion River is a great place to fish. The river's upper portions contain fish such as trout and smallmouth bass. The upper 8.5 miles (between Johnsonburg and Ridgway) are classified as All-Tackle Trophy-Trout waters. Brook trout can be found near the mouths of stocked tributaries. In general, brown trout inhabit the area upstream of Portland Mills, while the downstream section changes into a warmwater fishery. Below Piney Dam, warm- and coolwater species such as bluegills, bullheads, yellow perch and walleyes are more prevalent. Cook Forest State Park has a special fishing pond near the

park office that is available for use by children 12 and younger and people with a disability.

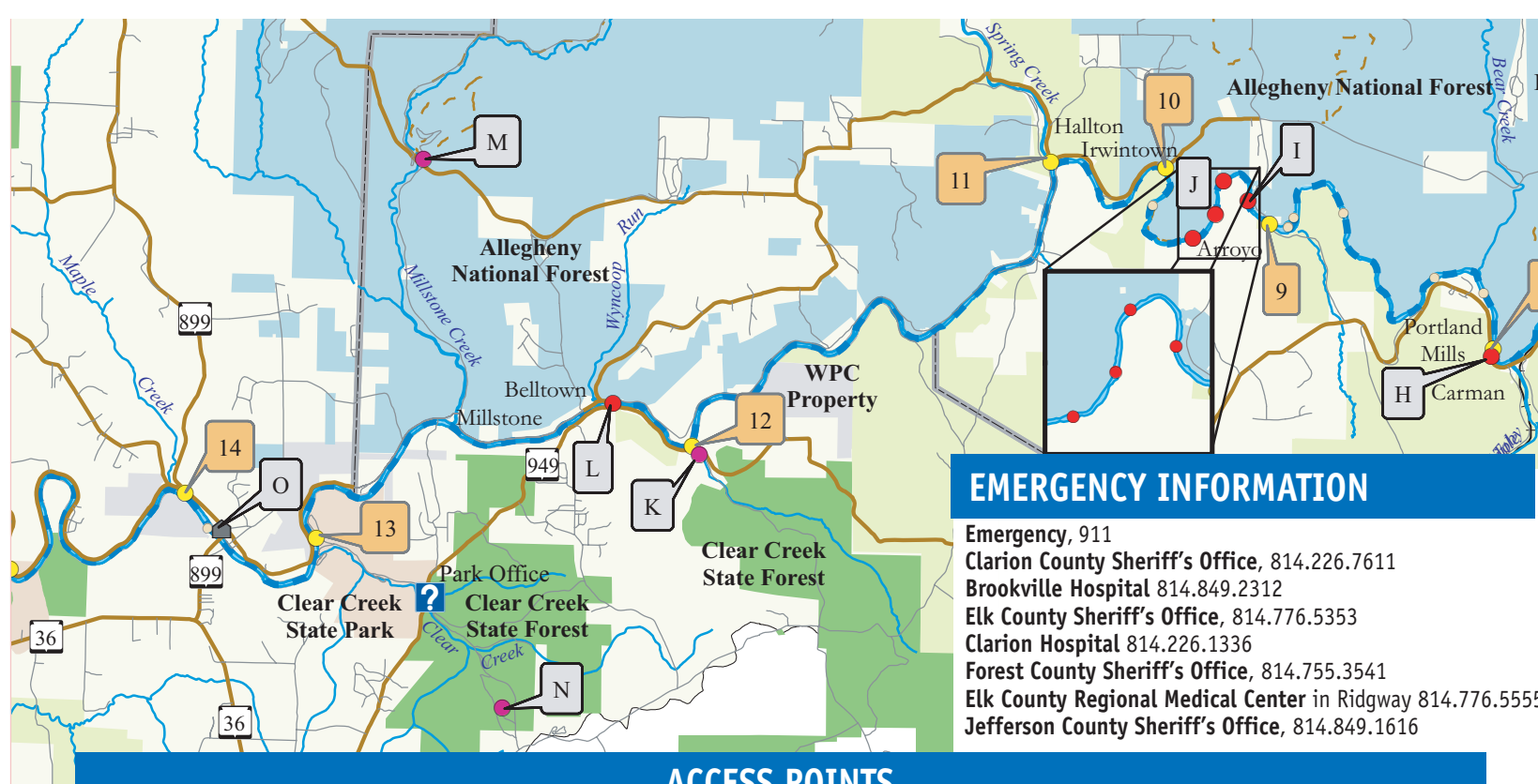
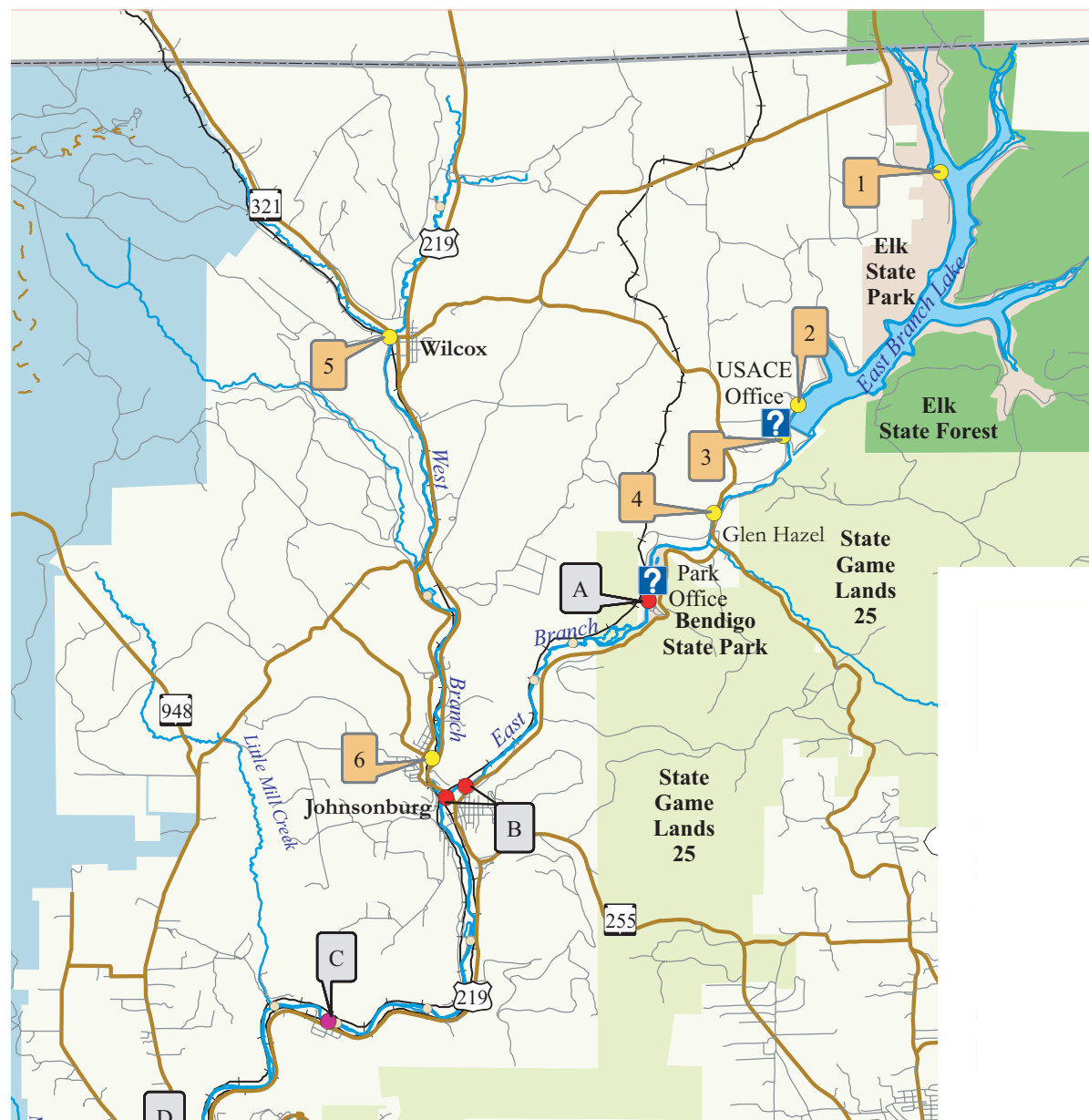
If you're a fly-fisher, there's a Delayed-Harvest, Fly-Fishing-Only area just south of Wilcox on the West Branch of the Clarion. Pennsylvania Fish & Boat Commission rules and regulations apply.

**Camping** is permitted on Allegheny National Forest lands, state forests, and in designated areas in state parks. Camping is not permitted on state game lands.

**Hunting** is permitted on Western Pennsylvania Conservancy lands, Allegheny National Forest lands, state game lands, state forest land and portions of state park land in accordance with Pennsylvania Game Laws. Contact the PA Game Commission for more information about seasons, limits, permits and regulations.

### ACCESS POINTS

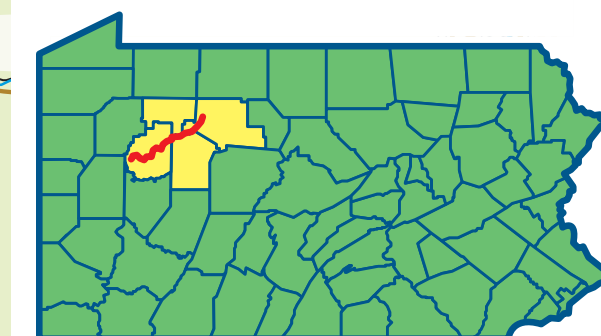
Map ID	River Access Name	Description	Latitude	Longitude
1	Instanter Boat Launch	Located on the east side of the East Branch Lake in Elk State Park, this is an excellent site to launch your boat from. Facilities include picnic area, restrooms, and water. The site is named for the town that once stood there, and is now flooded by the Lake.	41 36 21.842	78 33 34.926
2	East Branch Boat Launch	Located on USACE property near the East Branch Dam, this site is next to water, public phone, food concession, and restrooms. Plenty of parking can be found here.	41 33 49.151	78 35 37.705
3	USACE Access	Located immediately below the East Branch Dam on US Army Corps of Engineers property, this site is accessible from Kilgus Road.	41 33 15.858	78 35 46.869
4	Glen Hazel Access	Located on the East Branch Clarion River, this site offers parking and access on either side of the river just below the Glen Hazel Bridge. WARNING! Approximately .5 mi downstream is a dam. This dam is an historic structure. Do not attempt to float over this dam!	41 32 37.494	78 36 50.320
5	Wilcox Access	More appropriate for kayakers, this access is located just off of SR 321 on T 359 near the mouth of Wilson Run. Not being well-established, steep banks and limited parking lead to this access point. Under normal circumstances, river flow at this point is not conducive to canoeing.	41 34 31.503	78 41 34.152
6	Johnsonburg Access	Parking at this access point is shared with the soccer fields. Access is on the upstream side of the bridge.	41 29 55.707	78 40 54.027
7	Loves Canoe Access	Just off SR 219 located on Main Street in downtown Ridgway, you'll find Love's Canoe Rental next to the Clarion River Bridge. Loves offers Canoe Rentals & Sales and much, much more.	41 25 16.185	78 44 02.758
8	Portland Mills Access	This developed access is a pull-off area with limited parking.	41 22 07.264	78 49 42.195
9	Arroyo Access	Located on SGL 44, this well developed canoe access (on south side of bridge) offers ample parking.	41 23 25.112	78 52 52.204
10	Irwin Access	The Irwin Run Canoe Launch is located on the Allegheny National Forest traveling east from Hallton, on the north side of the river, cross Irwin Run; access is at sharp bend with pull off. This site is well established with ample parking, no camping is permitted.	41 24 00.936	78 54 20.375
11	Hallton Access	With plenty of parking, this access is located on SGL 28 and is owned and maintained by the PA Game Commission.	41 24 04.205	78 55 57.803
12	Heath Access	Located along SR 949, this access has some parking, and includes some interpretive signage about the history of the area. Located across the road from the Heath Trout Nursery.	41 21 00.237	79 00 57.463



### EMERGENCY INFORMATION

Emergency, 911  
 Clarion County Sheriff's Office, 814.226.7611  
 Brookville Hospital 814.849.2312  
 Elk County Sheriff's Office, 814.776.5353  
 Clarion Hospital 814.226.1336  
 Forest County Sheriff's Office, 814.755.3541  
 Elk County Regional Medical Center in Ridgway 814.776.5555  
 Jefferson County Sheriff's Office, 814.849.1616

Elk Regional Health Center in St. Mary's 814.788.8000  
 Sigel Volunteer Fire Department, located at the intersection of State routes 36 and 949 approximately 4.5 miles south of Clarington 814.752.2323  
 Millstone Township Municipal Building - located along State Route 3001 about 2.25 miles north of Belltown. Sigel Volunteer Fire Department Ward 2, Station 14 has a fire truck housed here for emergencies.  
 Mill Creek Volunteer Fire Department, located in the town of Mill Creek at the intersection of State routes 1001 and 1003, approximately 4 miles south of Gravel Lick 814.764.5191



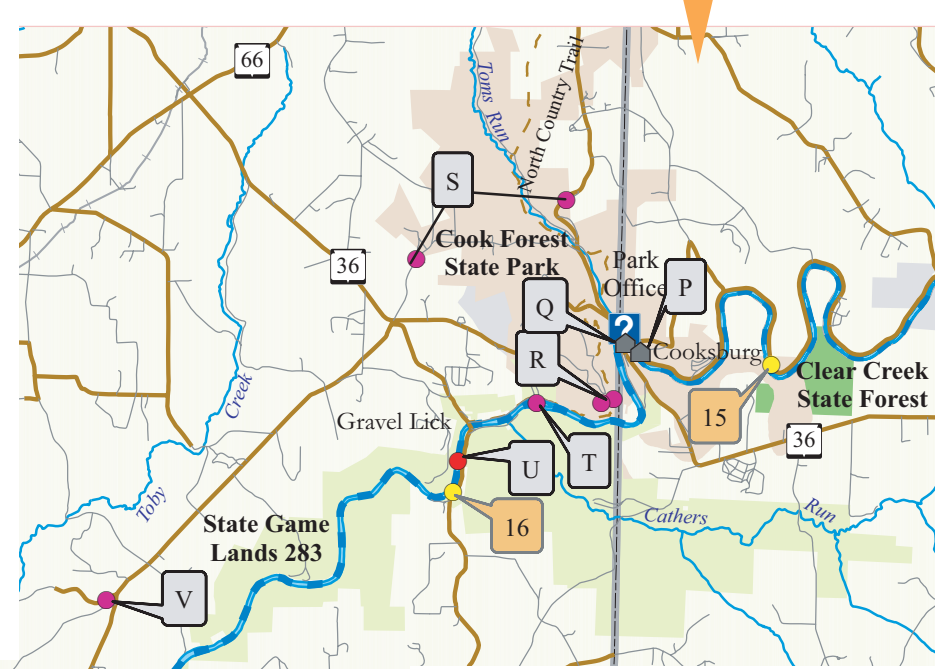
## Upper Clarion River Lower Clarion River

**Legend**

- Access Points
- Safety Features
- Points of Interest
- Golf Course
- Information
- Hospital
- Islands
- Wild and Scenic River
- Caution
- Trails
- Streams
- Interstate
- Major Roads
- Local Roads
- Active Railroads
- Inactive Railroads
- State Game Lands
- State Parks
- State Forest
- Allegheny National Forest
- Lands Open to the Public
- Clarion River Watershed
- Pennsylvania Counties

### ACCESS POINTS

Map ID	River Access Name	Description	Latitude	Longitude
13	Clear Creek Access	Located in Clear Creek State Park, this site offers ample parking. Obtain directions and information from the state park office. Please follow all rules and regulations.	41 19 59.382	79 06 13.545
14	Barnett Township Access	Located just off of SR 899, this access is very well-developed and offers ample parking. This site was established with funding assistance from DCFNR and a partnership consisting of Barnett Township, Cook Forest State Park, and DEP-Growing Greener.	41 20 26.459	79 08 04.521
15	Cook Forest SP Access	This access in Cook Forest State Park offers a beachlike setting. Parking area is across road.	41 19 36.894	79 10 31.460
16	Gravel Lick Access	Located on State Game Lands 283, this site has ample parking.	41 18 18.496	79 14 41.345
17	Mill Creek Access	The PA Fish & Boat Commission maintains this access. All PFBC rules and regulations apply.	41 14 05.340	79 19 18.465
18	State Game Lands 74 Access	This access is located across the river from the mouth of Mill Creek and is accessible from Highland Township Road 572. This access is not easy to find unless you are familiar with the area or have a good map to follow.	41 14 11.616	79 19 23.927
19	Clarion Access	Follow SR 68 through Clarion. Once SR 68 crosses SR 322, it becomes SR 1005. Turn right just before crossing the bridge. This access is paved and has plenty of parking. Clarion Marine Service and the Clarion borough provide a dock. Beware of boat traffic if you are canoeing or kayaking!	41 13 25.322	79 23 13.914
20	322 Bridge Access	Easy to find, this site offers plenty of parking. Access is downstream of the bridge on the left.	41 13 23.317	79 24 07.956
21	Deer Creek Access	Plenty of parking is available at this access. Although the access is on Deer Creek, it's quite close to the Clarion River and pull-out should not be difficult. Don't be surprised if the stream bottom and river bottom are iron-stained in this area. Both Piney and Deer creeks suffer from acid mine drainage as well as abandoned gas-well discharges.	41 10 19.804	79 28 39.689
22	Callensburg Access	Access on northeast side of SR 58 bridge.	41 07 49.67	78 33 16.81
23	Alum Rock Access Point	This river access is remotely located and the road to it travels through a private farm. Please be respectful. A 4x4 vehicle is recommended. There is limited parking. This access borders private property.	41 08 08.613	79 37 21.446
24	Parkers Landing	Take-out along the Allegheny River below the mouth of the Clarion River.	41 06 06.77	79 40 40.09



### FOR MORE INFORMATION

**Agencies & Organizations**  
 Clarion River Water Trail; PFBC web site: [www.fish.state.pa.us](http://www.fish.state.pa.us); and WPC web site: [www.paconserv.org](http://www.paconserv.org); or call the WPC at 724.459.0953.  
 Fishing licenses, boat registration and boating regulations, stocked streams and related matters, call the PFBC at 814.337.0444, [www.fish.state.pa.us](http://www.fish.state.pa.us).  
 DCFNR state parks and state forests, call 888.PA.PARKS.  
 Pennsylvania Game Lands, call 717.787.6286, [www.pgc.state.pa.us](http://www.pgc.state.pa.us).  
 WPC lands, call 412.586.2300, [www.paconserv.org](http://www.paconserv.org).  
 Elk County Historical Society, [www.elkcountyhistoricalsociety.org](http://www.elkcountyhistoricalsociety.org).  
 Jefferson County Historical & Genealogical Society Museum, call 814.849.7833.  
 Clarion County Historical Society Museum, call 814.226.4450; email [cchs@csnline.net](mailto:cchs@csnline.net); or visit the web site [www.csonline.net/cchs](http://www.csonline.net/cchs).  
 Acid mine drainage, contact your local county conservation district: 814.776.5373 (Elk); 814.849.7463 (Jefferson); 814.755.3560 (Forest); 814.226.4070 (Clarion); Department of Environmental Protection Bureau of Abandoned Mine Reclamation, 717.783.2267; WPC Watershed Assistance Center, 724.459.0953; or Western Pennsylvania Coalition for Abandoned Mine Reclamation (WPCAMR), 724.837.5271, [www.amrclearinghouse.org](http://www.amrclearinghouse.org).

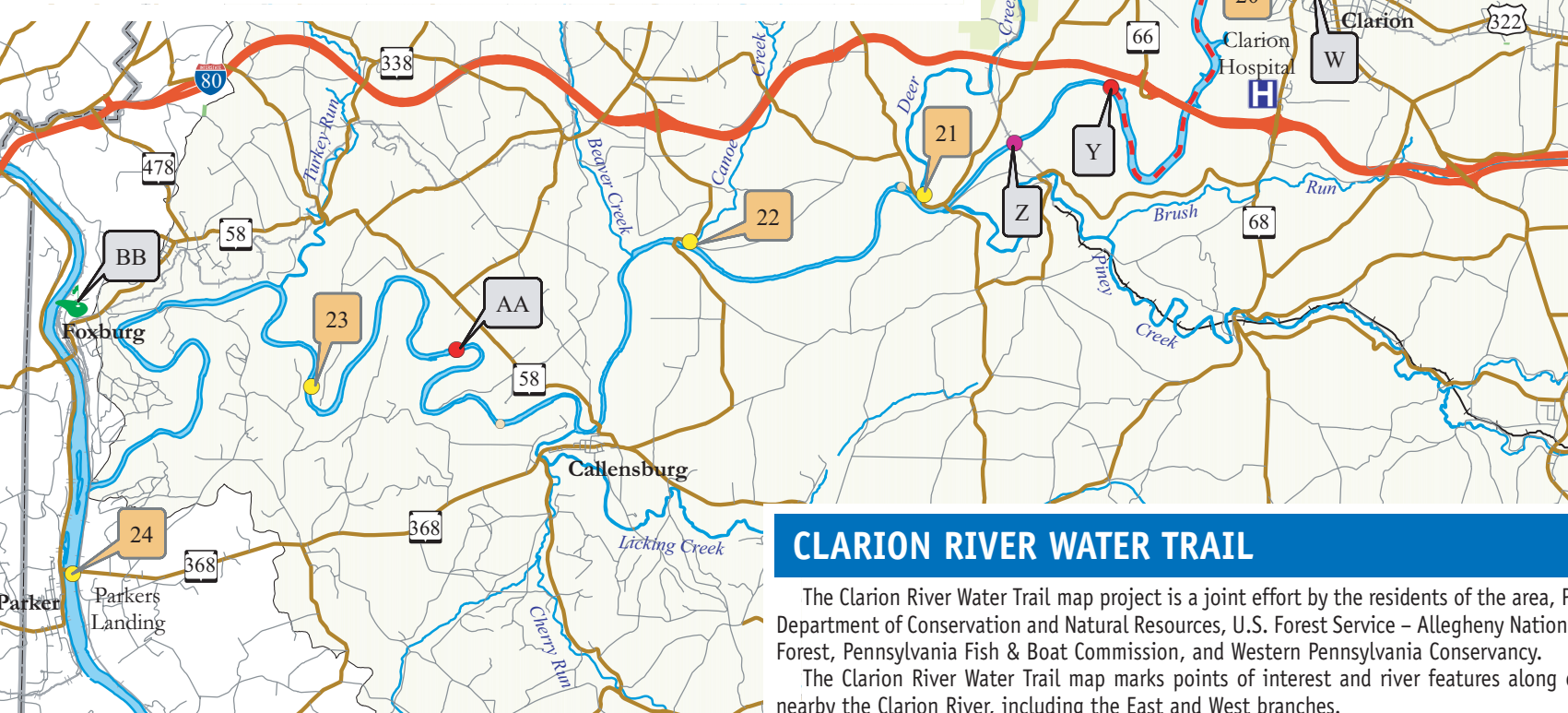
**Recreational Information**  
 Northwest Pennsylvania's Great Outdoors Visitors Bureaus, 800.348.9393, or visit their web site: [www.pagreatoutdoors.com](http://www.pagreatoutdoors.com).  
 Western Pennsylvania Canoe Guide, new edition to be printed spring 2004, contact Roy Weil and Mary Shaw at 412.681.5131, [www.2.cs.cmu.edu/~shaw/CG.html](http://www.2.cs.cmu.edu/~shaw/CG.html).  
 Cook Forests Vacation Bureau, 814.849.9377, [www.cookforest.org](http://www.cookforest.org). Cooks Forest Information Magazine users.penn.com/~pinecrest and Cook Forest Online [www.cookforest.com](http://www.cookforest.com).  
 Lumber Heritage Region, call 814.773.3162, <http://www.lumberheritage.org>.  
 Sawmill Center for the Arts, 814.744.9670, [www.sawmill.org](http://www.sawmill.org).  
 American Golf Hall of Fame, Foxburg, 724.659.3196.

**Canoe Rentals**  
 Foxburg Livery & Outfitters, Foxburg, PA; 724.659.3752; 800.519.6877.  
 Cook Forest Canoe Rental, Cooksburg, PA; 814.744.8094; 800.699.0712.  
 Pale Whale Canoe Rental/Cook Riverside Cabins, Cooksburg, PA; 814.744.8300; 800.680.0160.  
 Love's Canoe Rental, Main Street, Ridgway, PA; 814.776.6285.  
 Pine Crest Mountain Top Canoe Rentals, Route 36, Cooksburg, PA; 814.752.2200.  
 Cook Forest Motel, Cabin, & Sport Rentals, HC 1 Box 43, Clarington, PA; 814.752.2327; 800.897.9211



### RIVER ACCESSES

Clarion River access tables list a number of river access/take-out points and a short description of each. Local citizens suggested most of these access points for listing, which were then field-verified by WPC. Many of these access sites are undeveloped, receive minimal maintenance and have limited capacity to support large groups. Please refer to the description accompanying each access point for more information. Use your best judgment when planning your trips with respect to water levels, weather conditions, trip length, nearby accommodations, property ownership and safety. Respect the rights of private property owners.



### CLARION RIVER WATER TRAIL

The Clarion River Water Trail map project is a joint effort by the residents of the area, PA Department of Conservation and Natural Resources, U.S. Forest Service - Allegheny National Forest, Pennsylvania Fish & Boat Commission, and Western Pennsylvania Conservancy. The Clarion River Water Trail map marks points of interest and river features along or nearby the Clarion River, including the East and West branches.