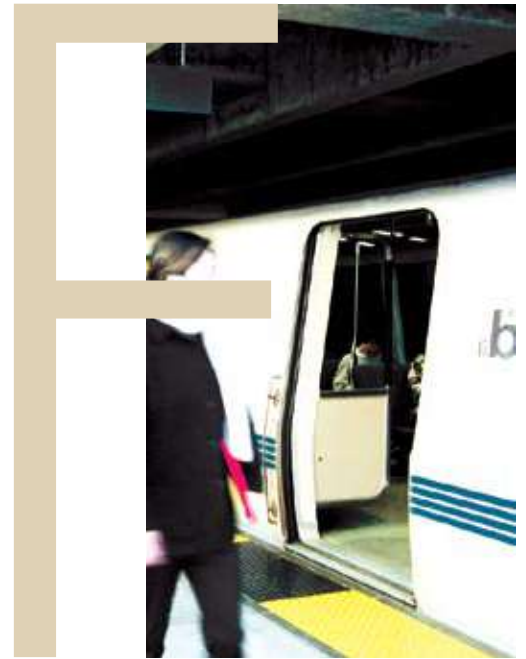
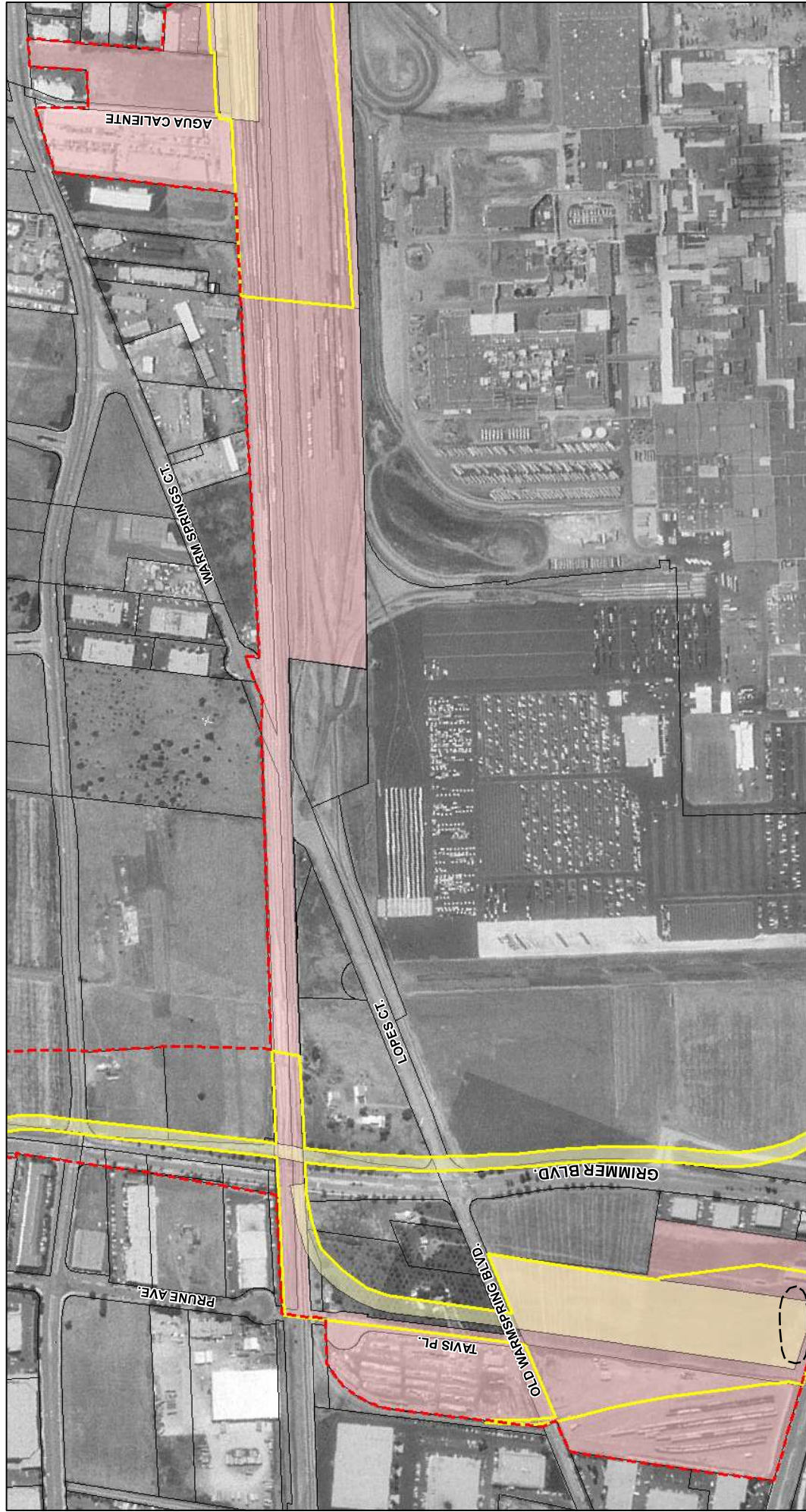
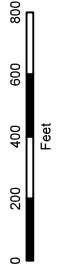


Maps of the Areas of Potential Effects

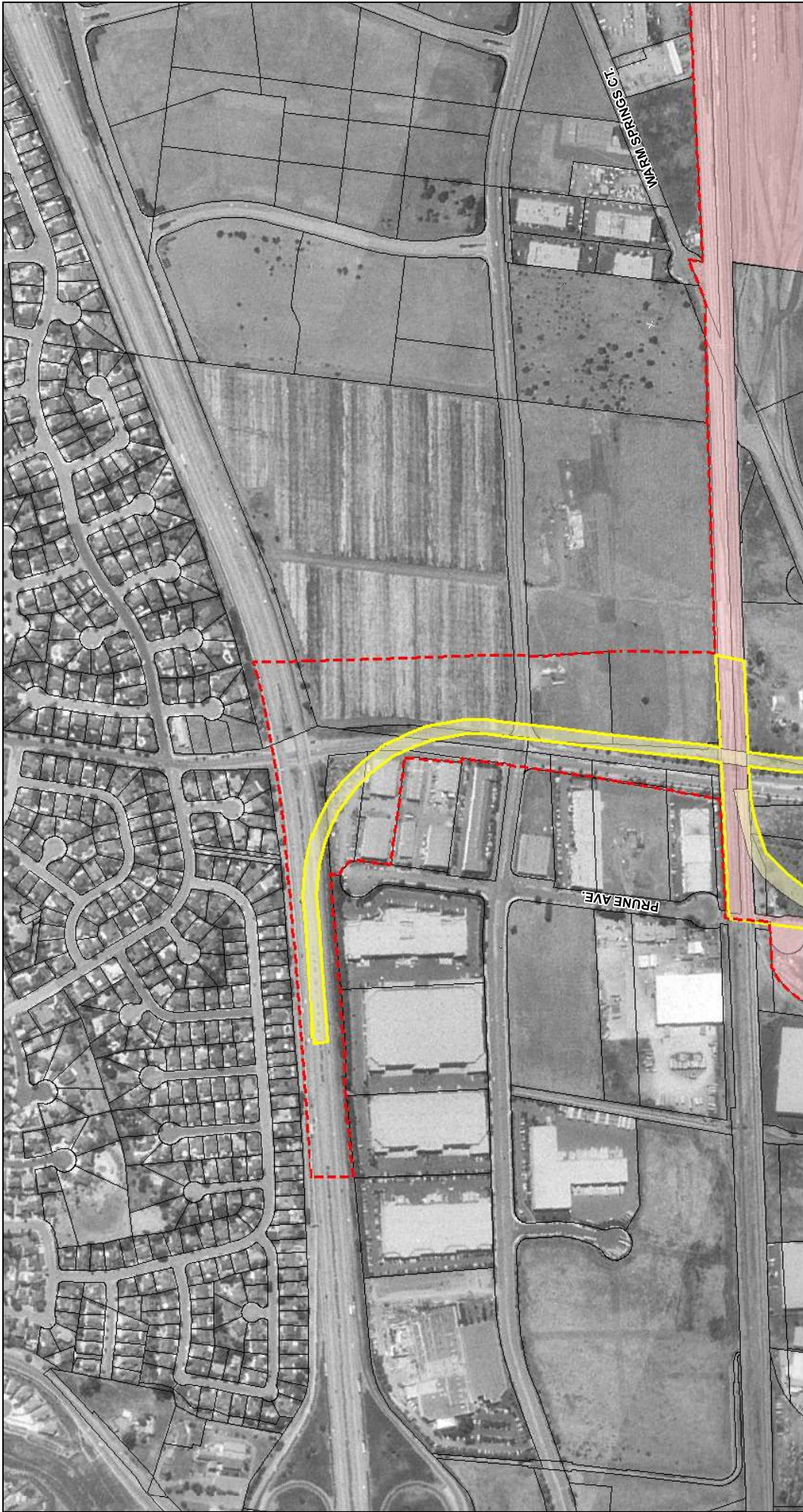




- Boreholes
- Architectural APE 2003
- Archaeological Sites
- Architectural APE 2006
- Archaeological APE 2002
- Archaeological APE 2006



Map 22. Silicon Valley Rapid Transit Corridor Project (SVRTC) APE and Archaeological Resources (Map 1 of 18).



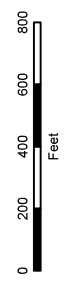
- Boreholes
- Architectural APE 2003
- Archaeological Sites
- Architectural APE 2006
- Archaeological Sites
- Architectural APE 2002
- Archaeological Sites



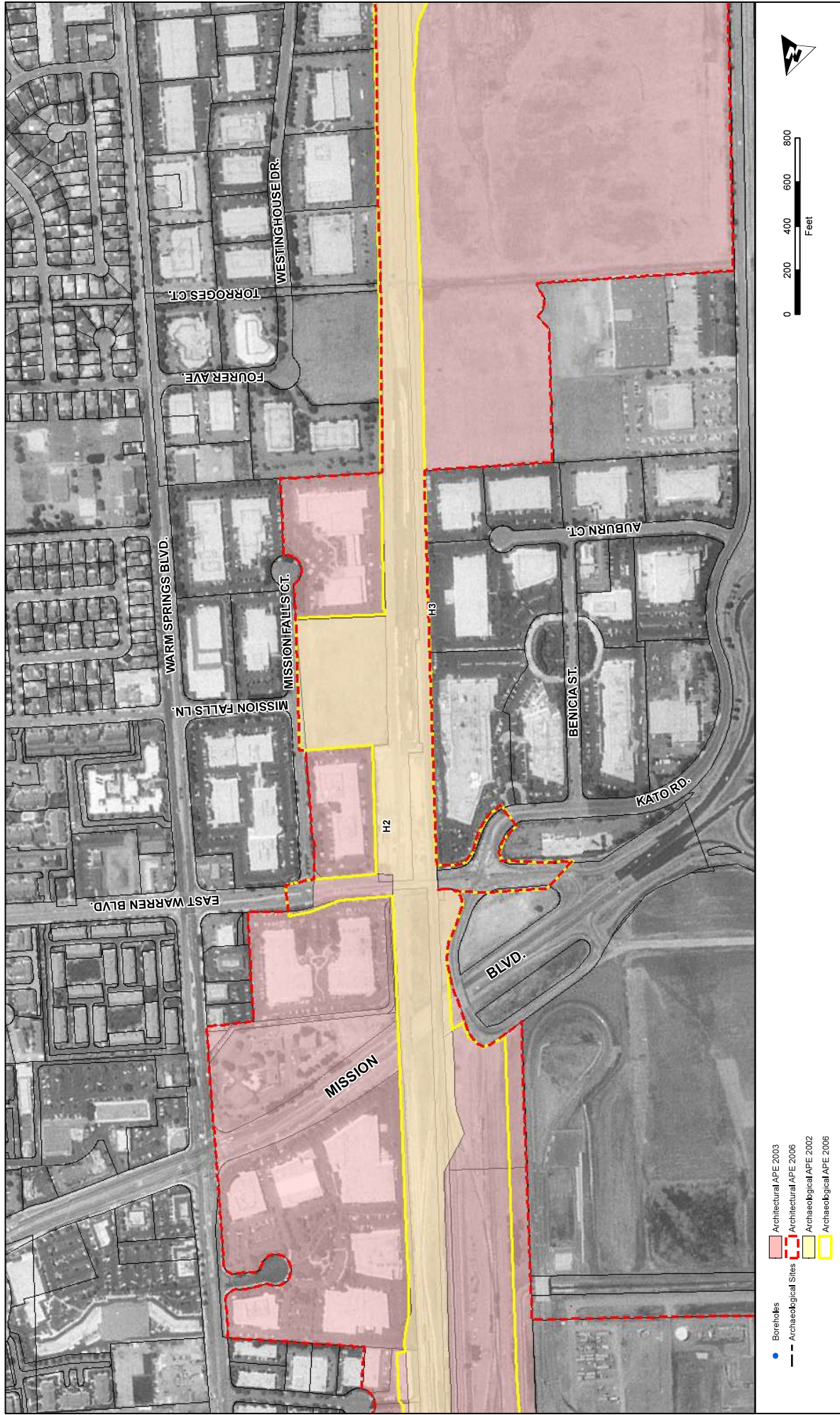
Map 23. Silicon Valley Rapid Transit Corridor Project (SVRTC) APE and Archaeological Resources (Map 2 of 18).



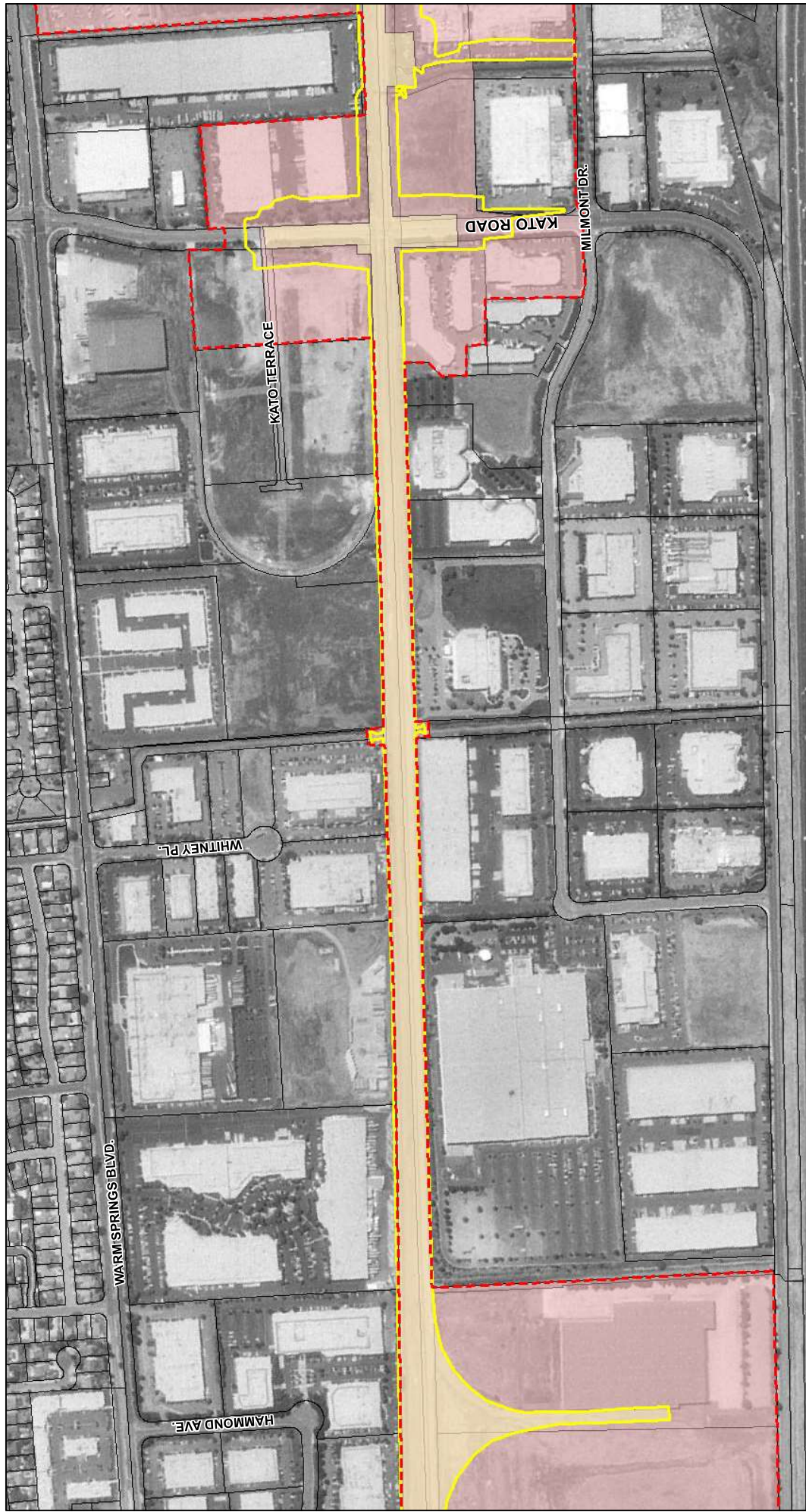
- Boreholes
- Architectural APE 2003
- Archaeological Sites
- Archaeological APE 2002
- Archaeological APE 2006



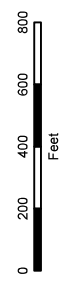
Map 24. Silicon Valley Rapid Transit Corridor Project (SVRTC) APE and Archaeological Resources (Map 3 of 18).



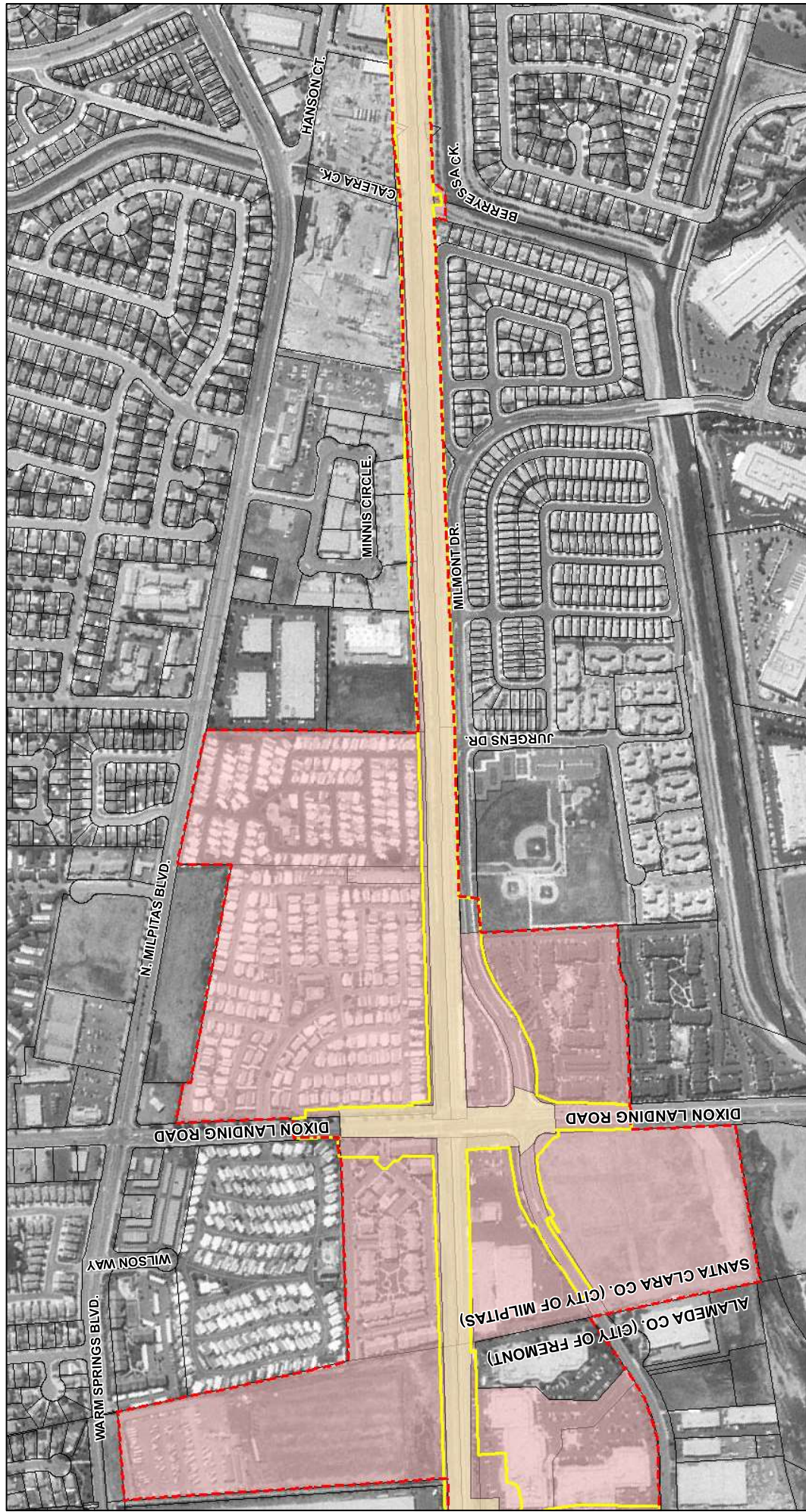
Map 25. Silicon Valley Rapid Transit Corridor Project (SVRTC) APE and Archaeological Resources (Map 4 of 18).
 Silicon Valley Rapid Transit Corridor Project (SVRTC) - Technical Memorandum - Archaeology - November 2006 Draft



- Boreholes
- Architectural APE 2003
- Archaeological Sites
- Architectural APE 2006
- Archaeological APE 2002
- Archaeological APE 2006



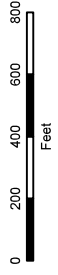
Map 26. Silicon Valley Rapid Transit Corridor Project (SVRTC) APE and Archaeological Resources (Map 5 of 18).



Map 27. Silicon Valley Rapid Transit Corridor Project (SVRTC) APE and Archaeological Resources (Map 6 of 18).



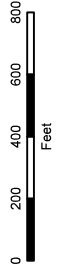
- Boreholes
- Architectural APE 2003
- Architectural APE 2006
- Archaeological Sites
- Archaeological APE 2002
- Archaeological APE 2006



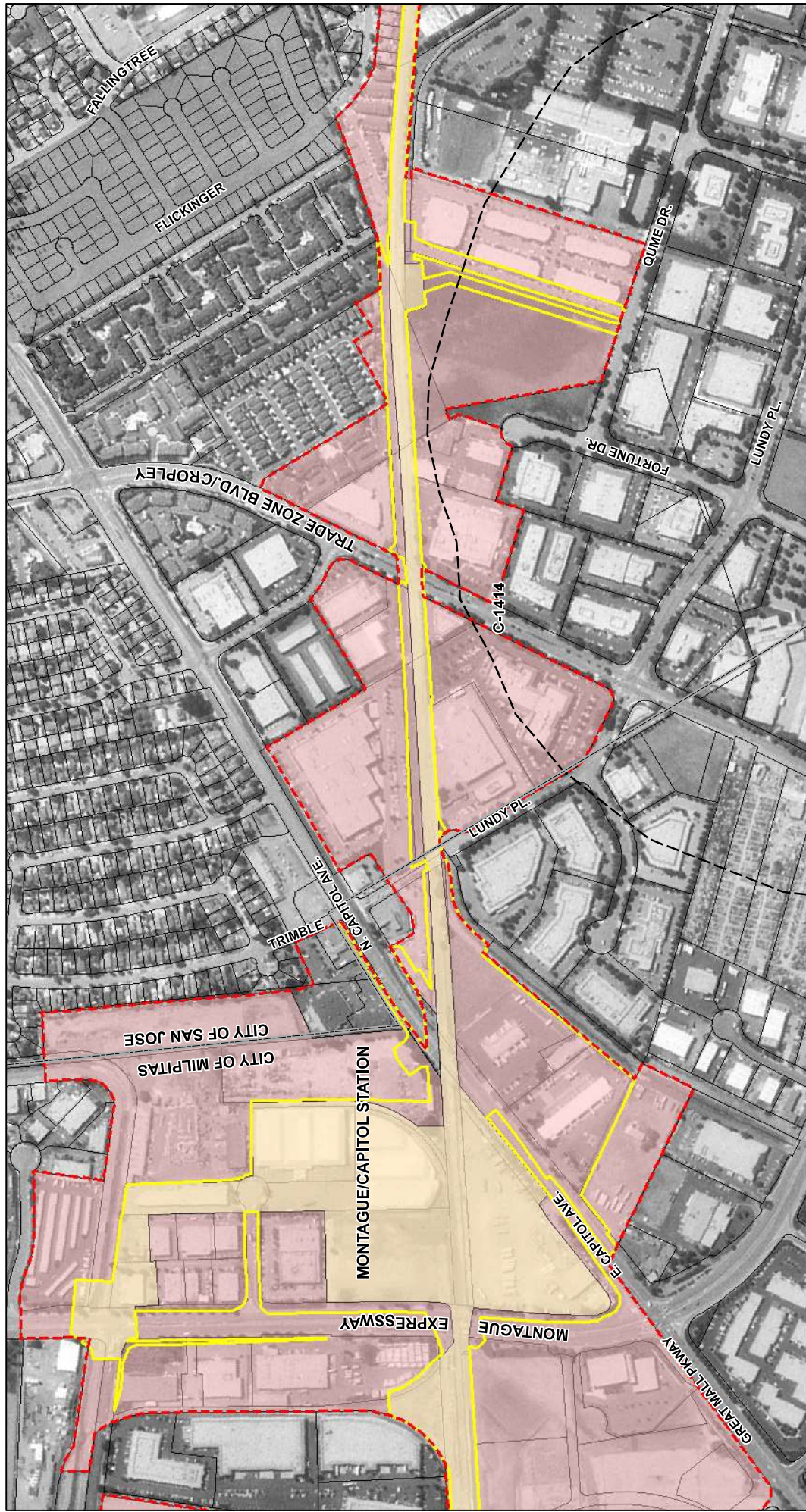
Map 28. Silicon Valley Rapid Transit Corridor Project (SVRTC) APE and Archaeological Resources (Map 7 of 18).



- Boreholes
- Architectural APE 2003
- Archaeological Sites
- Architectural APE 2006
- Archaeological APE 2002
- Archaeological APE 2006



Map 29. Silicon Valley Rapid Transit Corridor Project (SVRTC) APE and Archaeological Resources (Map 8 of 18).

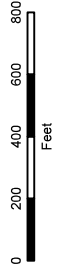


- Boreholes
- SVRTC
- Archaeological APE 2003
- Archaeological Sites
- Archaeological APE 2006
- Archaeological APE 2002
- Archaeological APE 2008

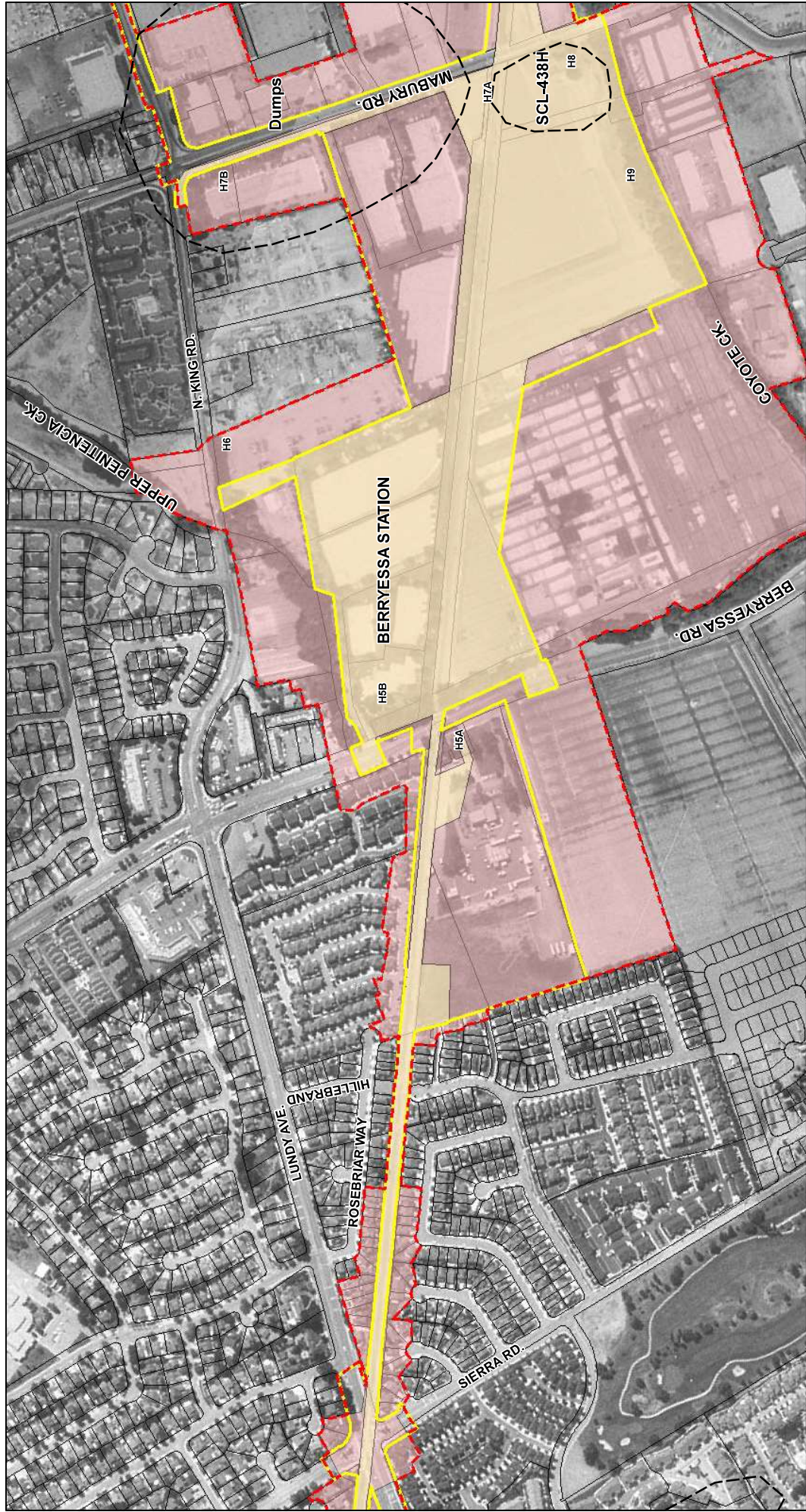
Map 30. Silicon Valley Rapid Transit Corridor Project (SVRTC) APE and Archaeological Resources (Map 9 of 18).



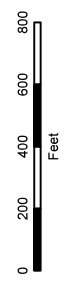
- Boreholes
- - - Archaeological Sites
- Architectural APE 2003
- Archaeological APE 2002
- Archaeological APE 2006



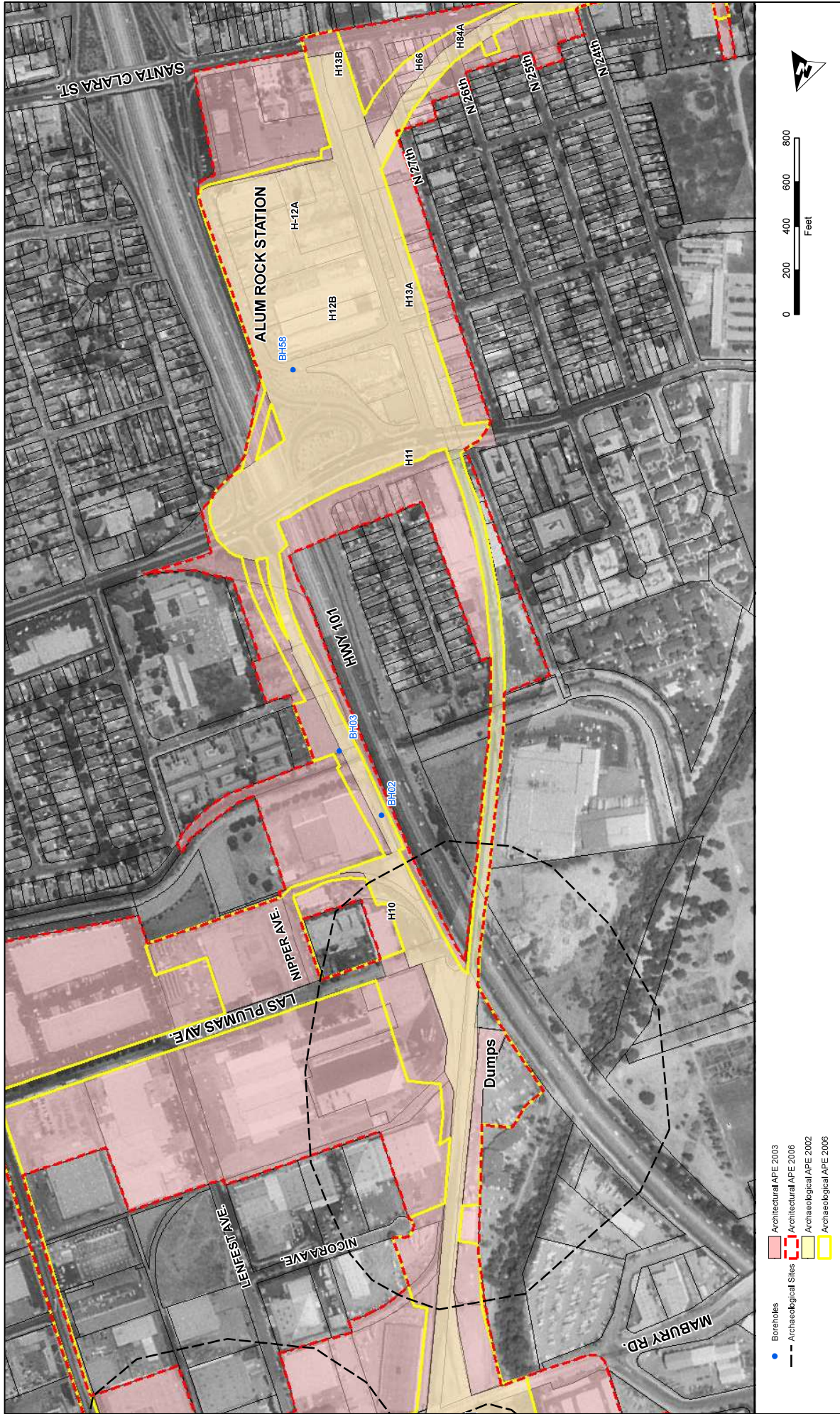
Map 31, Silicon Valley Rapid Transit Corridor Project (SVRTC) APE and Archaeological Resources (Map 10 of 18).



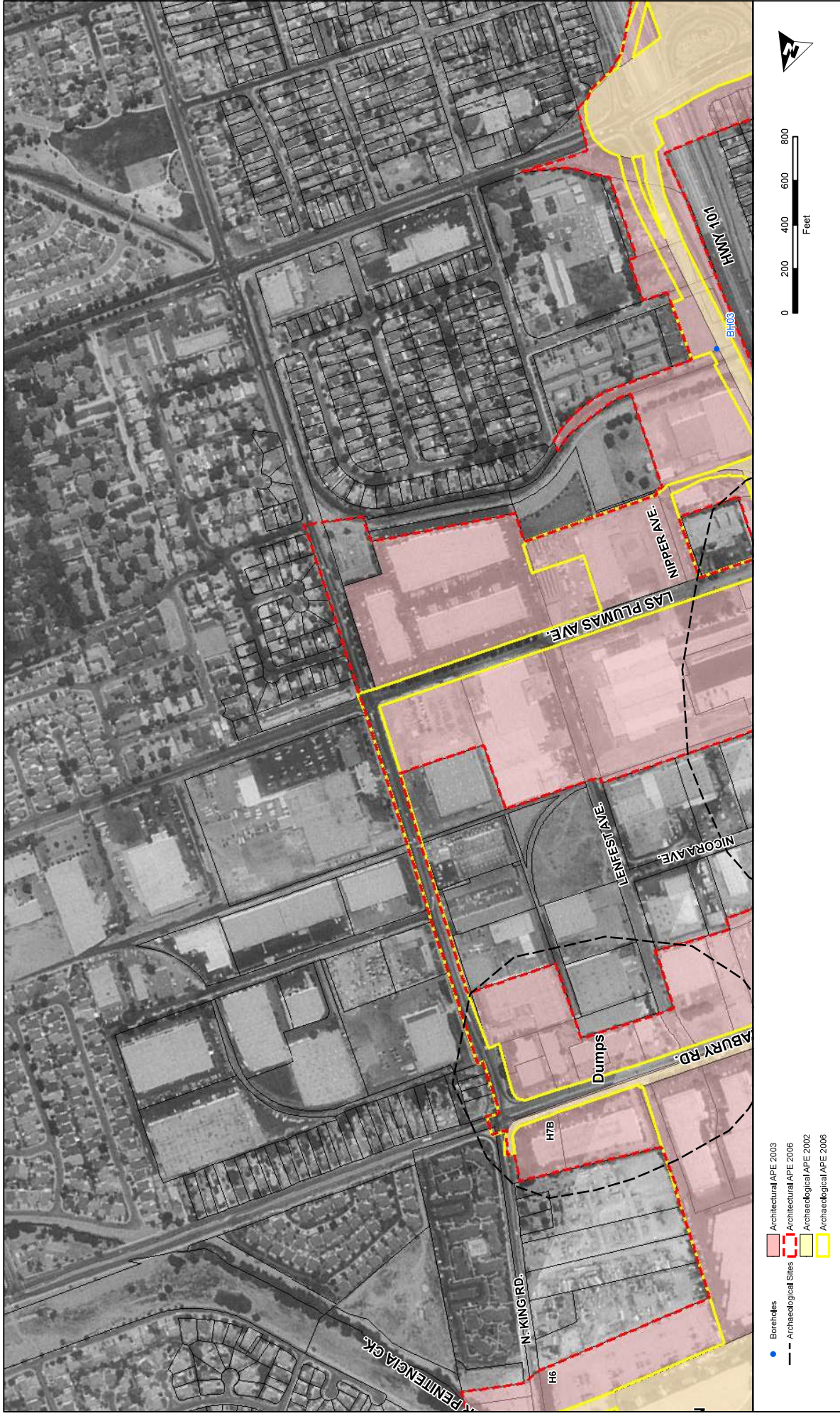
- Boreholes
- Architectural APE 2003
- Architectural APE 2006
- Archaeological Sites
- Archaeological APE 2002
- Archaeological APE 2006



Map 32. Silicon Valley Rapid Transit Corridor Project (SVRTC) APE and Archaeological Resources (Map 11 of 18).

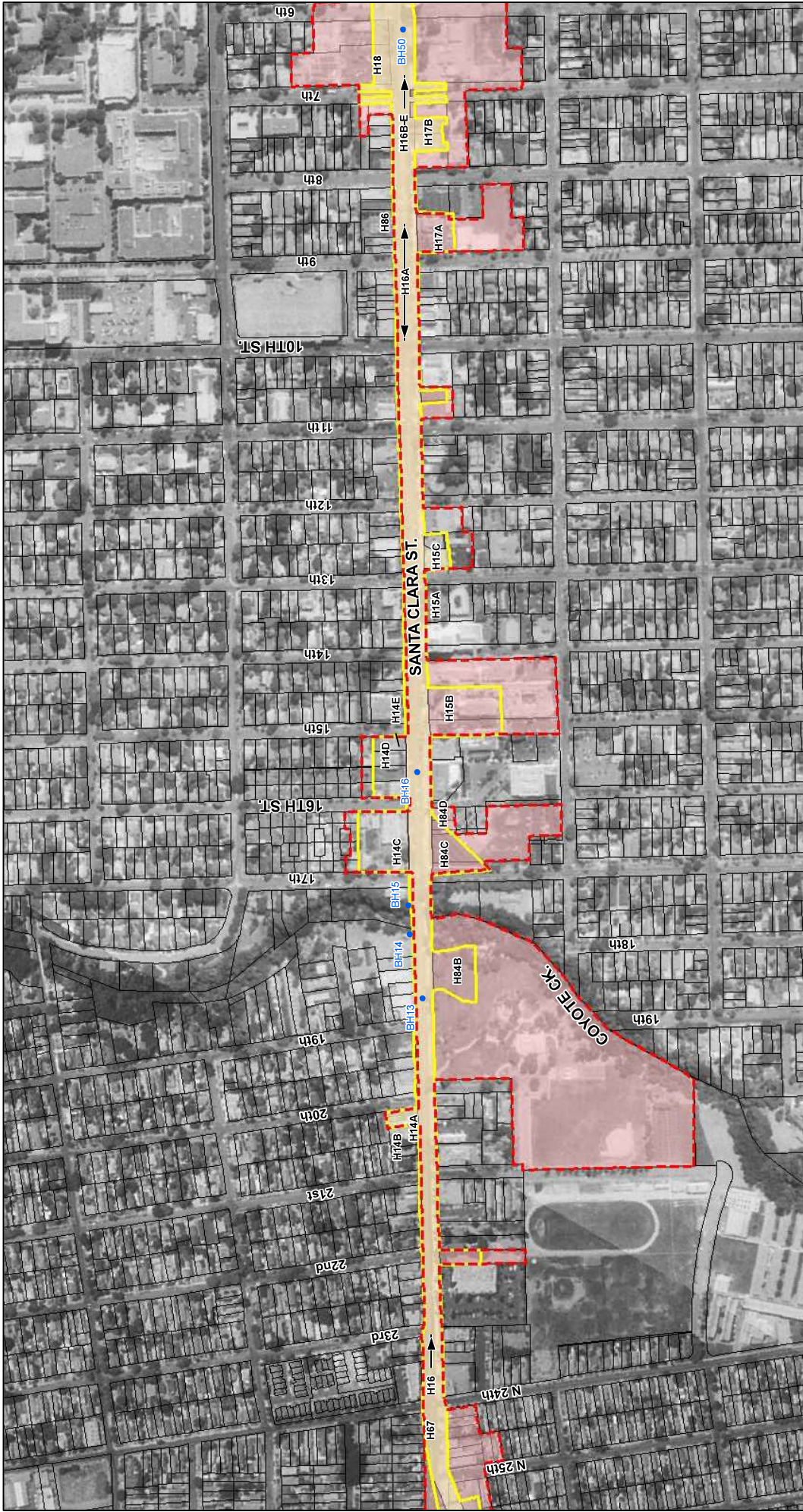


Map 33: Silicon Valley Rapid Transit Corridor Project (SVRTC) - Technical Memorandum - Archaeology - November 2006 Draft



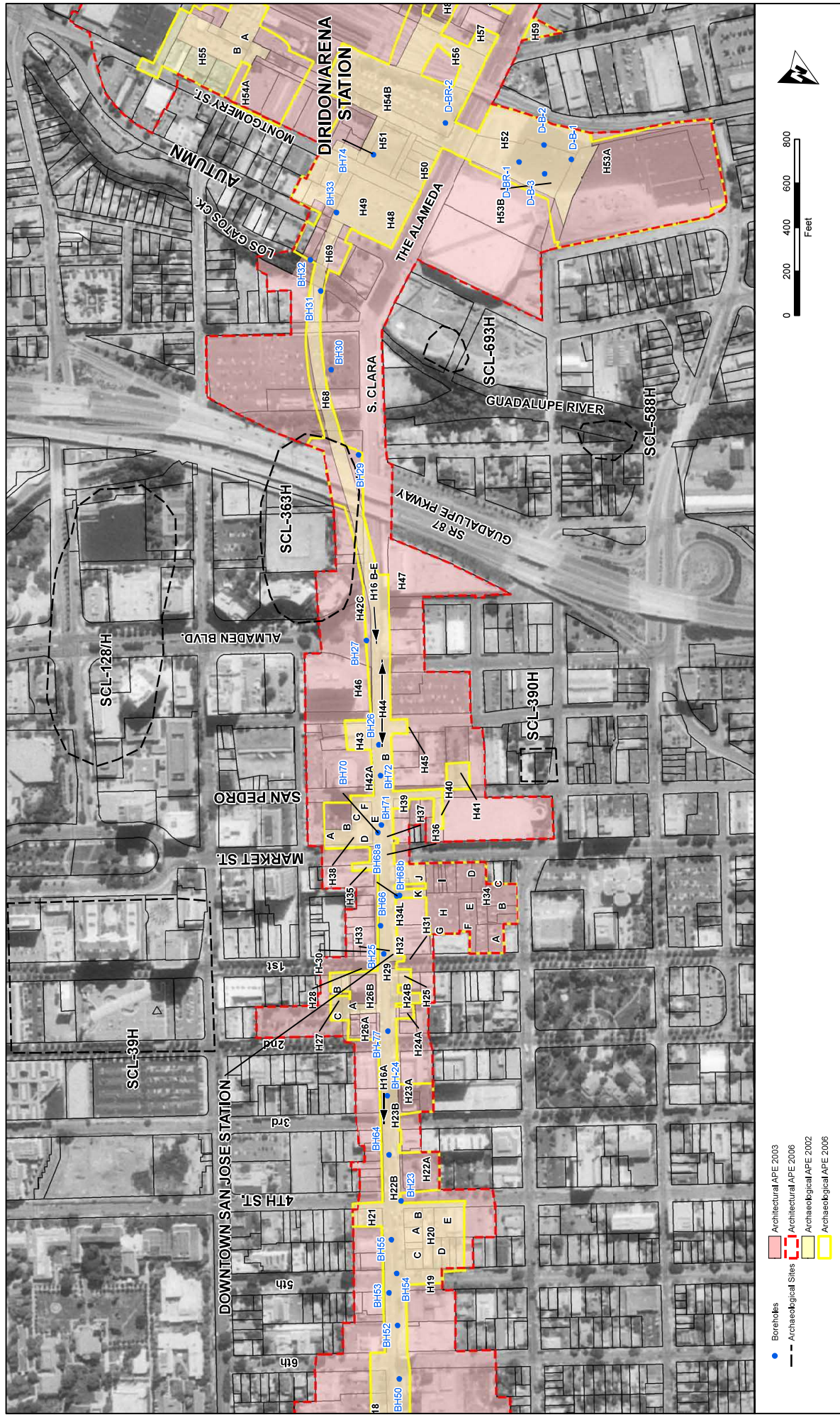
Map 34: Silicon Valley Rapid Transit Corridor Project (SVRTC) APE and Archaeological Resources (Map 13 of 18).

Silicon Valley Rapid Transit Corridor Project (SVRTC) - Technical Memorandum - Archaeology - November 2006 Draft



- Boreholes
- Architectural APE 2003
- Architectural APE 2006
- Archaeological APE 2002
- Archaeological APE 2006

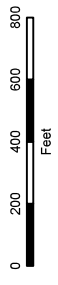
Map 35: Silicon Valley Rapid Transit Corridor Project (SVRTC) APE and Archaeological Resources (Map 14 of 18).



Map 36. Silicon Valley Rapid Transit Corridor Project (SVRTC) APE and Archaeological Resources (Map 15 of 18).



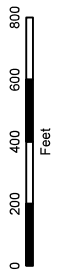
- Boreholes
- Architectural APE 2003
- Architectural APE 2006
- Archaeological Sites
- Archaeological APE 2002
- Archaeological APE 2006



Map 37: Silicon Valley Rapid Transit Corridor Project (SVRTC) APE and Archaeological Resources (Map 16 of 18).



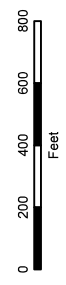
- Boreholes
- Archaeological APE 2003
- Archaeological APE 2006
- Archaeological APE 2002
- Archaeological APE 2006
- Archaeological Sites



Map 38: Silicon Valley Rapid Transit Corridor Project (SVRTC) APE and Archaeological Resources (Map 17 of 18).



- Boreholes
- Architectural APE 2003
- Architectural APE 2006
- Archaeological APE 2002
- Archaeological APE 2006



Map 39, Silicon Valley Rapid Transit Corridor Project (SVRTC) APE and Archaeological Resources (Map 18 of 18).

