



SPEC® MPIL2007 Result

Copyright 2006-2010 Standard Performance Evaluation Corporation

Intel Corporation

Endeavor (Intel Xeon E5-2670, 2.60 GHz, DDR3-1333 MHz, SMT on, Turbo off)

SPECmpiL_peak2007 = Not Run

SPECmpiL_base2007 = 4.75

MPI2007 license: 13

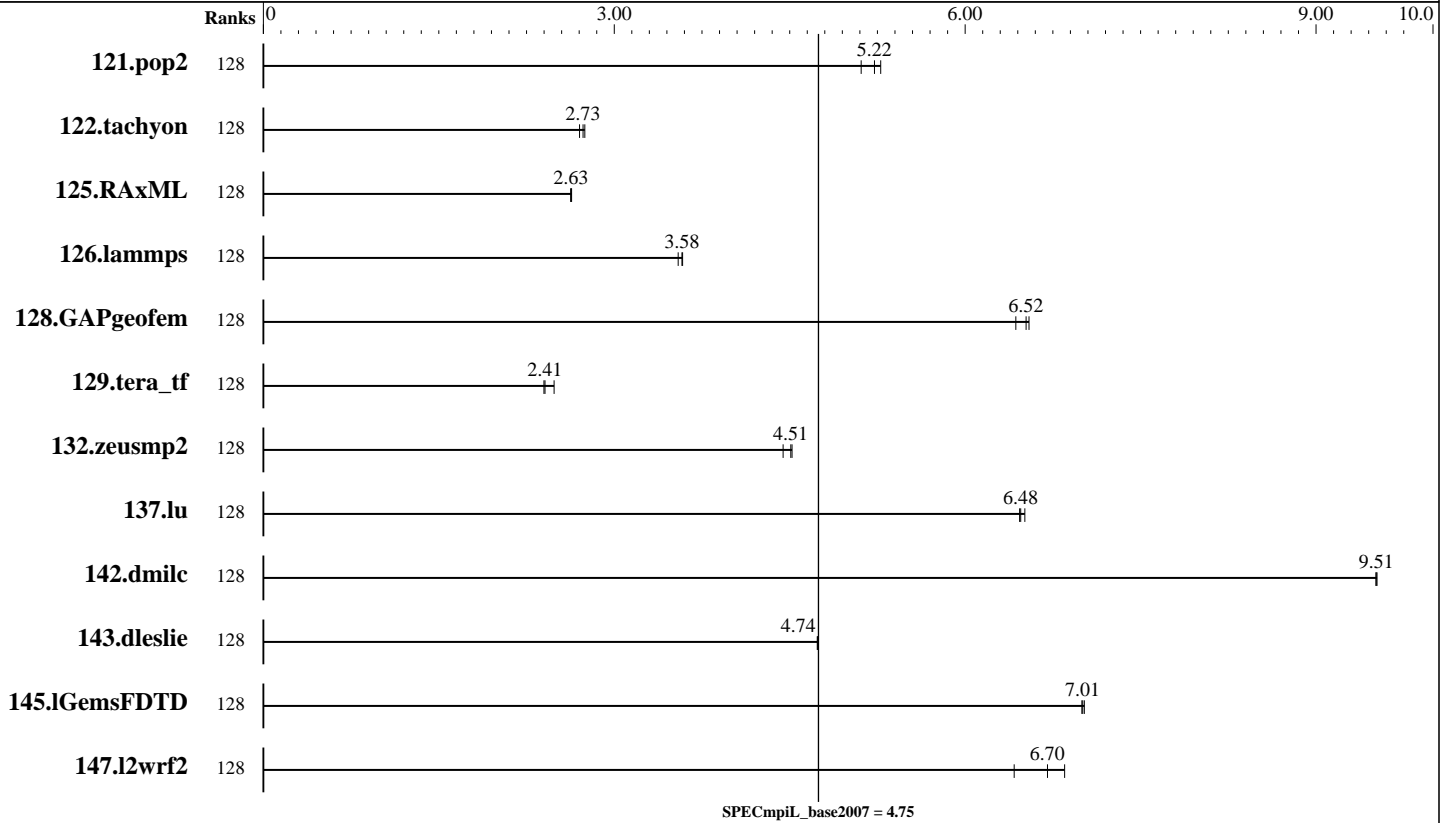
Test sponsor: Intel Corporation

Tested by: Pavel Shelepugin

Test date: Feb-2012

Hardware Availability: Mar-2012

Software Availability: Sep-2011



Results Table

Benchmark	Base							Peak						
	Ranks	Seconds	Ratio	Seconds	Ratio	Seconds	Ratio	Ranks	Seconds	Ratio	Seconds	Ratio	Seconds	Ratio
121.pop2	128	761	5.11	745	5.22	737	5.28							
122.tachyon	128	719	2.70	711	2.73	707	2.75							
125.RAxML	128	1111	2.63	1109	2.63	1108	2.64							
126.lammps	128	693	3.55	686	3.58	687	3.58							
128.GAPgeofem	128	922	6.43	910	6.52	907	6.55							
129.tera_tf	128	458	2.40	456	2.41	442	2.49							
132.zeusmp2	128	477	4.44	470	4.51	469	4.52							
137.lu	128	650	6.47	649	6.48	645	6.51							
142.dmilc	128	387	9.52	387	9.51	387	9.51							
143.dleslie	128	655	4.74	654	4.74	654	4.74							
145.lGemsFDTD	128	630	7.00	630	7.01	628	7.02							
147.l2wrf2	128	1198	6.85	1278	6.42	1224	6.70							

Results appear in the order in which they were run. Bold underlined text indicates a median measurement.

Standard Performance Evaluation Corporation

info@spec.org

http://www.spec.org/



SPEC MPIL2007 Result

Copyright 2006-2010 Standard Performance Evaluation Corporation

Intel Corporation

Endeavor (Intel Xeon E5-2670, 2.60 GHz, DDR3-1333 MHz, SMT on, Turbo off)

SPECmpiL_peak2007 = Not Run

SPECmpiL_base2007 = 4.75

MPI2007 license: 13

Test sponsor: Intel Corporation

Tested by: Pavel Shelepugin

Test date: Feb-2012

Hardware Availability: Mar-2012

Software Availability: Sep-2011

Hardware Summary

Type of System: Homogeneous
 Compute Node: Endeavor Node
 Interconnects: IB Switch
 Gigabit Ethernet
 File Server Node: NFS
 Total Compute Nodes: 8
 Total Chips: 16
 Total Cores: 128
 Total Threads: 256
 Total Memory: 512 GB
 Base Ranks Run: 128
 Minimum Peak Ranks: --
 Maximum Peak Ranks: --

Software Summary

C Compiler: Intel C++ Composer XE 2011 for Linux, Version 12.0.5.220 Build 20110719
 C++ Compiler: Intel C++ Composer XE 2011 for Linux, Version 12.0.5.220 Build 20110719
 Fortran Compiler: Intel Fortran Composer XE 2011 for Linux, Version 12.0.5.220 Build 20110719
 Base Pointers: 64-bit
 Peak Pointers: 64-bit
 MPI Library: Intel MPI Library 4.0.3.008 for Linux
 Other MPI Info: None
 Pre-processors: No
 Other Software: None

Node Description: Endeavor Node

Hardware

Number of nodes: 8
 Uses of the node: compute
 Vendor: Intel
 Model: R1208GLBPP
 CPU Name: Intel Xeon E5-2670
 CPU(s) orderable: 1-2 chips
 Chips enabled: 2
 Cores enabled: 16
 Cores per chip: 8
 Threads per core: 2
 CPU Characteristics: Intel Turbo Boost Technology disabled, 8.0 GT/s QPI, Hyper-Threading enabled
 CPU MHz: 2600
 Primary Cache: 32 KB I + 32 KB D on chip per core
 Secondary Cache: 256 KB I+D on chip per core
 L3 Cache: 20 MB I+D on chip per chip, 20 MB shared / 8 cores
 Other Cache: None
 Memory: 64 GB (8 x 8 GB 2Rx4 PC3-12800R, ECC, running at 1333MHz and CL9)
 Disk Subsystem: Seagate 600 GB SSD ST9600205SS
 Other Hardware: None
 Adapter: Intel (ESB2) 82575EB Dual-Port Gigabit Ethernet Controller
 Number of Adapters: 1
 Slot Type: PCI-Express x8
 Data Rate: 1Gbps Ethernet
 Ports Used: 2
 Interconnect Type: Ethernet
 Adapter: Mellanox MHQH29-XTC
 Number of Adapters: 1
 Slot Type: PCIe x8 Gen2
 Data Rate: InfiniBand 4x QDR
 Ports Used: 1
 Interconnect Type: InfiniBand

Software

Adapter: Intel (ESB2) 82575EB Dual-Port Gigabit Ethernet Controller
 Adapter Driver: e1000
 Adapter Firmware: None
 Adapter: Mellanox MHQH29-XTC
 Adapter Driver: OFED 1.5.3.1
 Adapter Firmware: 2.10.0
 Operating System: Red Hat EL 6.1, kernel 2.6.32-131
 Local File System: Linux/ext2
 Shared File System: NFS
 System State: Multi-User
 Other Software: Platform LSF 8.0



SPEC MPIL2007 Result

Copyright 2006-2010 Standard Performance Evaluation Corporation

Intel Corporation

Endeavor (Intel Xeon E5-2670, 2.60 GHz, DDR3-1333 MHz, SMT on, Turbo off)

SPECmpiL_peak2007 = Not Run

SPECmpiL_base2007 = 4.75

MPI2007 license: 13

Test sponsor: Intel Corporation

Tested by: Pavel Shelepugin

Test date: Feb-2012

Hardware Availability: Mar-2012

Software Availability: Sep-2011

Node Description: NFS

Hardware		Software	
Number of nodes:	1	Adapter:	Intel 82563GB Dual-Port Gigabit Ethernet Controller
Uses of the node:	fileserver	Adapter Driver:	e1000e
Vendor:	Intel	Adapter Firmware:	N/A
Model:	S7000FC4UR	Operating System:	RedHat EL 5 Update 4
CPU Name:	Intel Xeon CPU	Local File System:	None
CPU(s) orderable:	1-4 chips	Shared File System:	NFS
Chips enabled:	4	System State:	Multi-User
Cores enabled:	16	Other Software:	None
Cores per chip:	4		
Threads per core:	2		
CPU Characteristics:	--		
CPU MHz:	2926		
Primary Cache:	32 KB I + 32 KB D on chip per core		
Secondary Cache:	8 MB I+D on chip per chip, 4 MB shared / 2 cores		
L3 Cache:	None		
Other Cache:	None		
Memory:	64 GB		
Disk Subsystem:	8 disks, 500GB/disk, 2.7TB total		
Other Hardware:	None		
Adapter:	Intel 82563GB Dual-Port Gigabit Ethernet Controller		
Number of Adapters:	1		
Slot Type:	PCI-Express x8		
Data Rate:	1Gbps Ethernet		
Ports Used:	1		
Interconnect Type:	Ethernet		

Interconnect Description: IB Switch

Hardware		Software	
Vendor:	Mellanox		
Model:	Mellanox MTS3600Q-1UNC		
Switch Model:	Mellanox MTS3600Q-1UNC		
Number of Switches:	46		
Number of Ports:	36		
Data Rate:	InfiniBand 4x QDR		
Firmware:	7.2.0		
Topology:	Fat tree		
Primary Use:	MPI traffic		



SPEC MPIL2007 Result

Copyright 2006-2010 Standard Performance Evaluation Corporation

Intel Corporation

Endeavor (Intel Xeon E5-2670, 2.60 GHz, DDR3-1333 MHz, SMT on, Turbo off)

SPECmpiL_peak2007 = Not Run

SPECmpiL_base2007 = 4.75

MPI2007 license: 13

Test sponsor: Intel Corporation

Tested by: Pavel Shelepugin

Test date: Feb-2012

Hardware Availability: Mar-2012

Software Availability: Sep-2011

Interconnect Description: Gigabit Ethernet

	Hardware	Software
Vendor:	Force10 Networks	
Model:	Force10 S50, Force10 C300	
Switch Model:	Force10 S50, Force10 C300	
Number of Switches:	15	
Number of Ports:	48	
Data Rate:	1Gbps Ethernet, 10Gbps Ethernet	
Firmware:	8.2.1.0	
Topology:	Fat tree	
Primary Use:	Cluster File System	

Submit Notes

The config file option 'submit' was used.

General Notes

MPI startup command:

mpiexec.hydra command was used to start MPI jobs.

BIOS settings:

Intel Hyper-Threading Technology (SMT): Enabled (default is Enabled)

Intel Turbo Boost Technology (Turbo) : Disabled (default is Enabled)

RAM configuration:

Compute nodes have 2x8-GB RDIMM on each memory channel.

Network:

Forty six 36-port switches: 18 core switches and 28 leaf switches.

Each leaf has one link to each core. Remaining 18 ports on 25 of 28 leafs are used for compute nodes. On the remaining 3 leafs the ports are used for FS nodes and other peripherals.

Job placement:

Each MPI job was assigned to a topologically compact set of nodes, i.e.

the minimal needed number of leaf switches was used for each job: 1 switch

for 16/32/64/128/256 ranks, 2 switches for 512 ranks, 4 switches for 1024 ranks,

8 switches for 2048 ranks.

Platform LSF was used for job submission. It has no impact on performance.

Information can be found at: <http://www.platform.com>

Base Compiler Invocation

C benchmarks:

mpiicc

Continued on next page

Standard Performance Evaluation Corporation

info@spec.org

<http://www.spec.org/>

Page 4



SPEC MPIL2007 Result

Copyright 2006-2010 Standard Performance Evaluation Corporation

Intel Corporation

Endeavor (Intel Xeon E5-2670, 2.60 GHz,
DDR3-1333 MHz, SMT on, Turbo off)

SPECmpiL_peak2007 = Not Run

SPECmpiL_base2007 = 4.75

MPI2007 license: 13

Test sponsor: Intel Corporation

Tested by: Pavel Shelepugin

Test date: Feb-2012

Hardware Availability: Mar-2012

Software Availability: Sep-2011

Base Compiler Invocation (Continued)

C++ benchmarks:

126.lammps: mpiicpc

Fortran benchmarks:

mpiifort

Benchmarks using both Fortran and C:

mpiicc mpiifort

Base Portability Flags

121.pop2: -DSPEC_MPI_CASE_FLAG
126.lammps: -DMPICH_IGNORE_CXX_SEEK

Base Optimization Flags

C benchmarks:

-O3 -xAVX -no-prec-div -ipo

C++ benchmarks:

126.lammps: -O3 -xAVX -no-prec-div -ipo

Fortran benchmarks:

-O3 -xAVX -no-prec-div -ipo

Benchmarks using both Fortran and C:

-O3 -xAVX -no-prec-div -ipo

The flags file that was used to format this result can be browsed at

http://www.spec.org/mpi2007/flags/EM64T_Intel121_flags.html

You can also download the XML flags source by saving the following link:

http://www.spec.org/mpi2007/flags/EM64T_Intel121_flags.xml



SPEC MPIL2007 Result

Copyright 2006-2010 Standard Performance Evaluation Corporation

Intel Corporation

Endeavor (Intel Xeon E5-2670, 2.60 GHz,
DDR3-1333 MHz, SMT on, Turbo off)

SPECmpiL_peak2007 = Not Run

SPECmpiL_base2007 = 4.75

MPI2007 license: 13

Test sponsor: Intel Corporation

Tested by: Pavel Shelepugin

Test date: Feb-2012

Hardware Availability: Mar-2012

Software Availability: Sep-2011

SPEC and SPEC MPI are registered trademarks of the Standard Performance Evaluation Corporation. All other brand and product names appearing in this result are trademarks or registered trademarks of their respective holders.

For questions about this result, please contact the tester.
For other inquiries, please contact webmaster@spec.org.

Tested with SPEC MPI2007 v2.0.1.
Report generated on Tue Jul 22 13:46:08 2014 by SPEC MPI2007 PS/PDF formatter v1463.
Originally published on 7 March 2012.