



# SPEC® CINT2006 Result

Copyright 2006-2017 Standard Performance Evaluation Corporation

## Huawei

**SPECint®2006 = 81.0**

Huawei 1288H V5 (Intel Xeon Platinum 8164)

**SPECint\_base2006 = 77.9**

CPU2006 license: 3175

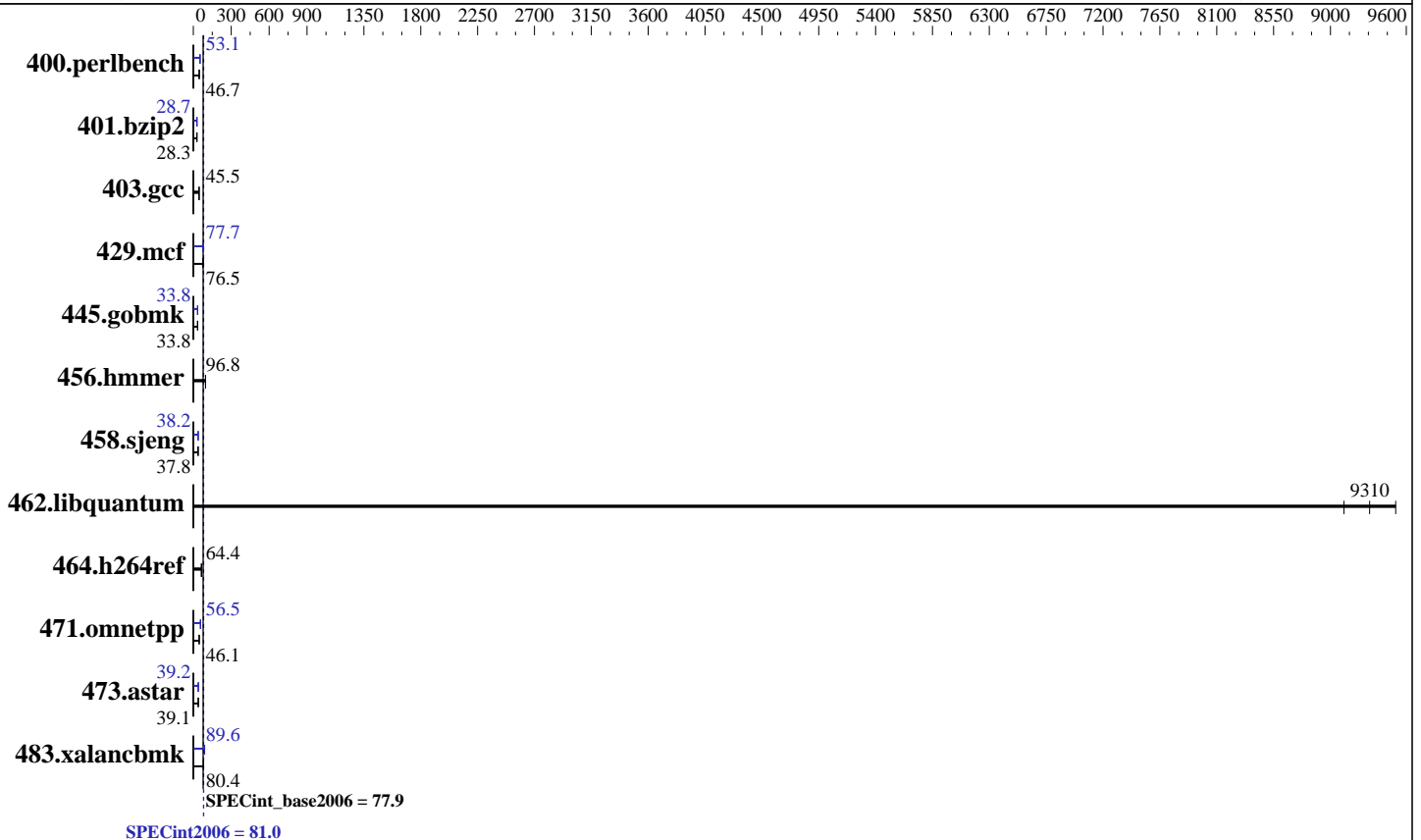
Test sponsor: Huawei

Tested by: Huawei

Test date: Jul-2017

Hardware Availability: Sep-2017

Software Availability: Nov-2016



### Hardware

CPU Name: Intel Xeon Platinum 8164  
 CPU Characteristics: Intel Turbo Boost Technology up to 3.70 GHz  
 CPU MHz: 2000  
 FPU: Integrated  
 CPU(s) enabled: 52 cores, 2 chips, 26 cores/chip  
 CPU(s) orderable: 1,2 chip  
 Primary Cache: 32 KB I + 32 KB D on chip per core  
 Secondary Cache: 1 MB I+D on chip per core  
 L3 Cache: 35.75 MB I+D on chip per chip  
 Other Cache: None  
 Memory: 384 GB (24 x 16 GB 2Rx8 PC4-2666V-R)  
 Disk Subsystem: 1 x 1200 GB SAS, 10000 RPM  
 Other Hardware: None

### Software

Operating System: Red Hat Enterprise Linux Server release 7.3 (Maipo)  
 Compiler: 3.10.0-514.el7.x86\_64 C/C++: Version 17.0.0.098 of Intel C/C++ Compiler for Linux  
 Auto Parallel: Yes  
 File System: xfs  
 System State: Run level 3 (multi-user)  
 Base Pointers: 32/64-bit  
 Peak Pointers: 32/64-bit  
 Other Software: Microquill SmartHeap V10.2



# SPEC CINT2006 Result

Copyright 2006-2017 Standard Performance Evaluation Corporation

## Huawei

SPECint2006 = **81.0**

Huawei 1288H V5 (Intel Xeon Platinum 8164)

SPECint\_base2006 = **77.9**

CPU2006 license: 3175  
Test sponsor: Huawei  
Tested by: Huawei

Test date: Jul-2017  
Hardware Availability: Sep-2017  
Software Availability: Nov-2016

## Results Table

| Benchmark      | Base               |                    |                    |                    |                    |                    | Peak               |                    |                    |                    |                    |                    |
|----------------|--------------------|--------------------|--------------------|--------------------|--------------------|--------------------|--------------------|--------------------|--------------------|--------------------|--------------------|--------------------|
|                | Seconds            | Ratio              | Seconds            | Ratio              | Seconds            | Ratio              | Seconds            | Ratio              | Seconds            | Ratio              | Seconds            | Ratio              |
| 400.perlbench  | <b><u>209</u></b>  | <b><u>46.7</u></b> | 209                | 46.7               | 210                | 46.6               | <b><u>184</u></b>  | <b><u>53.1</u></b> | 184                | 53.0               | 184                | 53.1               |
| 401.bzip2      | 340                | 28.4               | 341                | 28.3               | <b><u>340</u></b>  | <b><u>28.3</u></b> | <b><u>336</u></b>  | <b><u>28.7</u></b> | 336                | 28.7               | 336                | 28.7               |
| 403.gcc        | 177                | 45.4               | <b><u>177</u></b>  | <b><u>45.5</u></b> | 177                | 45.5               | 177                | 45.4               | <b><u>177</u></b>  | <b><u>45.5</u></b> | 177                | 45.5               |
| 429.mcf        | <b><u>119</u></b>  | <b><u>76.5</u></b> | 118                | 77.5               | 119                | 76.4               | 118                | 77.5               | <b><u>117</u></b>  | <b><u>77.7</u></b> | 116                | 78.6               |
| 445.gobmk      | 310                | 33.8               | <b><u>310</u></b>  | <b><u>33.8</u></b> | 310                | 33.8               | 310                | 33.8               | <b><u>310</u></b>  | <b><u>33.8</u></b> | 310                | 33.8               |
| 456.hammer     | <b><u>96.3</u></b> | <b><u>96.8</u></b> | 96.6               | 96.6               | 96.2               | 97.0               | <b><u>96.3</u></b> | <b><u>96.8</u></b> | 96.6               | 96.6               | 96.2               | 97.0               |
| 458.sjeng      | <b><u>320</u></b>  | <b><u>37.8</u></b> | 321                | 37.8               | 320                | 37.8               | 316                | 38.2               | 316                | 38.3               | <b><u>316</u></b>  | <b><u>38.2</u></b> |
| 462.libquantum | 2.18               | 9520               | <b><u>2.23</u></b> | <b><u>9310</u></b> | 2.28               | 9110               | 2.18               | 9520               | <b><u>2.23</u></b> | <b><u>9310</u></b> | 2.28               | 9110               |
| 464.h264ref    | <b><u>343</u></b>  | <b><u>64.4</u></b> | 343                | 64.6               | 345                | 64.1               | <b><u>343</u></b>  | <b><u>64.4</u></b> | 343                | 64.6               | 345                | 64.1               |
| 471.omnetpp    | 133                | 46.9               | 137                | 45.7               | <b><u>136</u></b>  | <b><u>46.1</u></b> | <b><u>111</u></b>  | <b><u>56.5</u></b> | 110                | 56.8               | 111                | 56.4               |
| 473.astar      | 180                | 39.1               | <b><u>179</u></b>  | <b><u>39.1</u></b> | 179                | 39.2               | <b><u>179</u></b>  | <b><u>39.2</u></b> | 179                | 39.1               | 179                | 39.2               |
| 483.xalancbmk  | 85.7               | 80.5               | 85.9               | 80.3               | <b><u>85.8</u></b> | <b><u>80.4</u></b> | 77.3               | 89.3               | 76.9               | 89.7               | <b><u>77.0</u></b> | <b><u>89.6</u></b> |

Results appear in the order in which they were run. Bold underlined text indicates a median measurement.

## Submit Notes

The config file option 'submit' was used.

## Operating System Notes

Stack size set to unlimited using "ulimit -s unlimited"

## Platform Notes

BIOS configuration:

Set Power Efficiency Mode to Custom

Set Hyper-Threading to Disable

Sysinfo program /spec17/config/sysinfo.rev6993

Revision 6993 of 2015-11-06 (b5e8d4b4eb51ed28d7f98696cbe290c1)

running on localhost.localdomain Wed Jul 12 01:59:40 2017

This section contains SUT (System Under Test) info as seen by some common utilities. To remove or add to this section, see:

<http://www.spec.org/cpu2006/Docs/config.html#sysinfo>

From /proc/cpuinfo

model name : Intel(R) Xeon(R) Platinum 8164 CPU @ 2.00GHz

2 "physical id"s (chips)

52 "processors"

cores, siblings (Caution: counting these is hw and system dependent. The following excerpts from /proc/cpuinfo might not be reliable. Use with caution.)

cpu cores : 26

Continued on next page



# SPEC CINT2006 Result

Copyright 2006-2017 Standard Performance Evaluation Corporation

Huawei

SPECint2006 = 81.0

Huawei 1288H V5 (Intel Xeon Platinum 8164)

SPECint\_base2006 = 77.9

CPU2006 license: 3175

Test date: Jul-2017

Test sponsor: Huawei

Hardware Availability: Sep-2017

Tested by: Huawei

Software Availability: Nov-2016

## Platform Notes (Continued)

```

siblings      : 26
physical 0:   cores 0 1 2 3 4 5 6 8 9 10 11 12 13 16 17 18 19 20 21 22 24 25
                26 27 28 29
physical 1:   cores 0 1 2 3 4 5 6 8 9 10 11 12 13 16 17 18 19 20 21 22 24 25
                26 27 28 29
cache size   : 36608 KB

```

From /proc/meminfo

```

MemTotal:      394145204 kB
HugePages_Total: 0
Hugepagesize:  2048 kB

```

From /etc/\*release\* /etc/\*version\*

```

os-release:
NAME="Red Hat Enterprise Linux Server"
VERSION="7.3 (Maipo)"
ID="rhel"
ID_LIKE="fedora"
VERSION_ID="7.3"
PRETTY_NAME="Red Hat Enterprise Linux Server 7.3 (Maipo)"
ANSI_COLOR="0;31"
CPE_NAME="cpe:/o:redhat:enterprise_linux:7.3:GA:server"
redhat-release: Red Hat Enterprise Linux Server release 7.3 (Maipo)
system-release: Red Hat Enterprise Linux Server release 7.3 (Maipo)
system-release-cpe: cpe:/o:redhat:enterprise_linux:7.3:ga:server

```

uname -a:

```

Linux localhost.localdomain 3.10.0-514.el7.x86_64 #1 SMP Wed Oct 19 11:24:13
EDT 2016 x86_64 x86_64 x86_64 GNU/Linux

```

run-level 3 Jul 11 17:15

SPEC is set to: /spec17

```

Filesystem      Type      Size      Used Avail Use% Mounted on
/dev/sda2        xfs       262G      87G  175G  34% /

```

Additional information from dmidecode:

Warning: Use caution when you interpret this section. The 'dmidecode' program reads system data which is "intended to allow hardware to be accurately determined", but the intent may not be met, as there are frequent changes to hardware, firmware, and the "DMTF SMBIOS" standard.

BIOS INSYDE Corp. 0.19 06/22/2017

Memory:

24x Samsung M393A2K43BB1-CTD 16 GB 2 rank 2666 MHz

(End of data from sysinfo program)



# SPEC CINT2006 Result

Copyright 2006-2017 Standard Performance Evaluation Corporation

**Huawei**

**SPECint2006 = 81.0**

**Huawei 1288H V5 (Intel Xeon Platinum 8164)**

**SPECint\_base2006 = 77.9**

**CPU2006 license:** 3175

**Test date:** Jul-2017

**Test sponsor:** Huawei

**Hardware Availability:** Sep-2017

**Tested by:** Huawei

**Software Availability:** Nov-2016

## General Notes

Environment variables set by runspec before the start of the run:  
KMP\_AFFINITY = "granularity=fine,compact"  
LD\_LIBRARY\_PATH = "/spec17/libs/32:/spec17/libs/64:/spec17/sh10.2"  
OMP\_NUM\_THREADS = "52"

Binaries compiled on a system with 1x Intel Core i7-4790 CPU + 32GB RAM memory using Redhat Enterprise Linux 7.2  
Transparent Huge Pages enabled with:  
echo always > /sys/kernel/mm/transparent\_hugepage/enabled  
runspec command invoked through numactl i.e.:  
numactl --interleave=all runspec <etc>

## Base Compiler Invocation

C benchmarks:  
icc -m64

C++ benchmarks:  
icpc -m64

## Base Portability Flags

400.perlbench: -DSPEC\_CPU\_LP64 -DSPEC\_CPU\_LINUX\_X64  
401.bzip2: -DSPEC\_CPU\_LP64  
403.gcc: -DSPEC\_CPU\_LP64  
429.mcf: -DSPEC\_CPU\_LP64  
445.gobmk: -DSPEC\_CPU\_LP64  
456.hmmer: -DSPEC\_CPU\_LP64  
458.sjeng: -DSPEC\_CPU\_LP64  
462.libquantum: -DSPEC\_CPU\_LP64 -DSPEC\_CPU\_LINUX  
464.h264ref: -DSPEC\_CPU\_LP64  
471.omnetpp: -DSPEC\_CPU\_LP64  
473.astar: -DSPEC\_CPU\_LP64  
483.xalancbmk: -DSPEC\_CPU\_LP64 -DSPEC\_CPU\_LINUX

## Base Optimization Flags

C benchmarks:  
-xCORE-AVX2 -ipo -O3 -no-prec-div -parallel -qopt-prefetch  
-auto-p32

C++ benchmarks:  
-xCORE-AVX2 -ipo -O3 -no-prec-div -qopt-prefetch -auto-p32  
-Wl,-z,muldefs -L/sh10.2 -lsmartheap64



# SPEC CINT2006 Result

Copyright 2006-2017 Standard Performance Evaluation Corporation

Huawei

SPECint2006 = 81.0

Huawei 1288H V5 (Intel Xeon Platinum 8164)

SPECint\_base2006 = 77.9

CPU2006 license: 3175  
Test sponsor: Huawei  
Tested by: Huawei

Test date: Jul-2017  
Hardware Availability: Sep-2017  
Software Availability: Nov-2016

## Base Other Flags

C benchmarks:

403.gcc: -Dalloca=\_alloca

## Peak Compiler Invocation

C benchmarks (except as noted below):

icc -m64

400.perlbench: icc -m32 -L/opt/intel/compilers\_and\_libraries\_2017/linux/lib/ia32

445.gobmk: icc -m32 -L/opt/intel/compilers\_and\_libraries\_2017/linux/lib/ia32

C++ benchmarks (except as noted below):

icc -m32 -L/opt/intel/compilers\_and\_libraries\_2017/linux/lib/ia32

473.astar: icpc -m64

## Peak Portability Flags

400.perlbench: -D\_FILE\_OFFSET\_BITS=64 -DSPEC\_CPU\_LINUX\_IA32  
401.bzip2: -DSPEC\_CPU\_LP64  
403.gcc: -DSPEC\_CPU\_LP64  
429.mcf: -DSPEC\_CPU\_LP64  
445.gobmk: -D\_FILE\_OFFSET\_BITS=64  
456.hmmmer: -DSPEC\_CPU\_LP64  
458.sjeng: -DSPEC\_CPU\_LP64  
462.libquantum: -DSPEC\_CPU\_LP64 -DSPEC\_CPU\_LINUX  
464.h264ref: -DSPEC\_CPU\_LP64  
471.omnetpp: -D\_FILE\_OFFSET\_BITS=64  
473.astar: -DSPEC\_CPU\_LP64  
483.xalancbmk: -D\_FILE\_OFFSET\_BITS=64 -DSPEC\_CPU\_LINUX

## Peak Optimization Flags

C benchmarks:

400.perlbench: -prof-gen(pass 1) -prof-use(pass 2) -xCORE-AVX2(pass 2)  
-par-num-threads=1(pass 1) -ipo(pass 2) -O3(pass 2)  
-no-prec-div(pass 2) -qopt-prefetch

401.bzip2: -prof-gen(pass 1) -prof-use(pass 2) -xCORE-AVX2(pass 2)  
-par-num-threads=1(pass 1) -ipo(pass 2) -O3(pass 2)  
-no-prec-div -auto-ilp32 -qopt-prefetch

Continued on next page



# SPEC CINT2006 Result

Copyright 2006-2017 Standard Performance Evaluation Corporation

Huawei

SPECint2006 = 81.0

Huawei 1288H V5 (Intel Xeon Platinum 8164)

SPECint\_base2006 = 77.9

CPU2006 license: 3175

Test sponsor: Huawei

Tested by: Huawei

Test date: Jul-2017

Hardware Availability: Sep-2017

Software Availability: Nov-2016

## Peak Optimization Flags (Continued)

403.gcc: basepeak = yes

429.mcf: -xCORE-AVX2 -ipo -O3 -no-prec-div -parallel  
-qopt-prefetch -auto-p32

445.gobmk: -prof-gen(pass 1) -prof-use(pass 2) -xCORE-AVX2(pass 2)  
-par-num-threads=1(pass 1) -ipo(pass 2) -O3(pass 2)  
-no-prec-div(pass 2)

456.hmmmer: basepeak = yes

458.sjeng: -prof-gen(pass 1) -prof-use(pass 2) -xCORE-AVX2(pass 2)  
-par-num-threads=1(pass 1) -ipo(pass 2) -O3(pass 2)  
-no-prec-div(pass 2) -unroll4

462.libquantum: basepeak = yes

464.h264ref: basepeak = yes

C++ benchmarks:

471.omnetpp: -prof-gen(pass 1) -prof-use(pass 2) -xCORE-AVX2(pass 2)  
-par-num-threads=1(pass 1) -ipo(pass 2) -O3(pass 2)  
-no-prec-div(pass 2) -qopt-ra-region-strategy=block  
-Wl,-z,muldefs -L/sh10.2 -lsmartheap

473.astar: -xCORE-AVX2 -ipo -O3 -no-prec-div -qopt-prefetch  
-auto-p32 -Wl,-z,muldefs -L/sh10.2 -lsmartheap64

483.xalancbmk: -xCORE-AVX2 -ipo -O3 -no-prec-div -qopt-prefetch  
-Wl,-z,muldefs -L/sh10.2 -lsmartheap

## Peak Other Flags

C benchmarks:

403.gcc: -Dalloca=\_alloca

The flags files that were used to format this result can be browsed at

<http://www.spec.org/cpu2006/flags/Intel-ic17.0-official-linux64.html>

<http://www.spec.org/cpu2006/flags/Huawei-Platform-Settings-SKL-V1.6.html>

You can also download the XML flags sources by saving the following links:

<http://www.spec.org/cpu2006/flags/Intel-ic17.0-official-linux64.xml>

<http://www.spec.org/cpu2006/flags/Huawei-Platform-Settings-SKL-V1.6.xml>



# SPEC CINT2006 Result

Copyright 2006-2017 Standard Performance Evaluation Corporation

Huawei

SPECint2006 = 81.0

Huawei 1288H V5 (Intel Xeon Platinum 8164)

SPECint\_base2006 = 77.9

CPU2006 license: 3175

Test sponsor: Huawei

Tested by: Huawei

Test date: Jul-2017

Hardware Availability: Sep-2017

Software Availability: Nov-2016

SPEC and SPECint are registered trademarks of the Standard Performance Evaluation Corporation. All other brand and product names appearing in this result are trademarks or registered trademarks of their respective holders.

For questions about this result, please contact the tester.  
For other inquiries, please contact [webmaster@spec.org](mailto:webmaster@spec.org).

Tested with SPEC CPU2006 v1.2.  
Report generated on Tue Aug 8 15:41:52 2017 by SPEC CPU2006 PS/PDF formatter v6932.  
Originally published on 8 August 2017.