



SPEC® CINT2006 Result

Copyright 2006-2017 Standard Performance Evaluation Corporation

Dell Inc.

PowerEdge R740 (Intel Xeon Platinum 8176, 2.10 GHz)

SPECint®2006 = 82.2

SPECint_base2006 = 78.6

CPU2006 license: 55

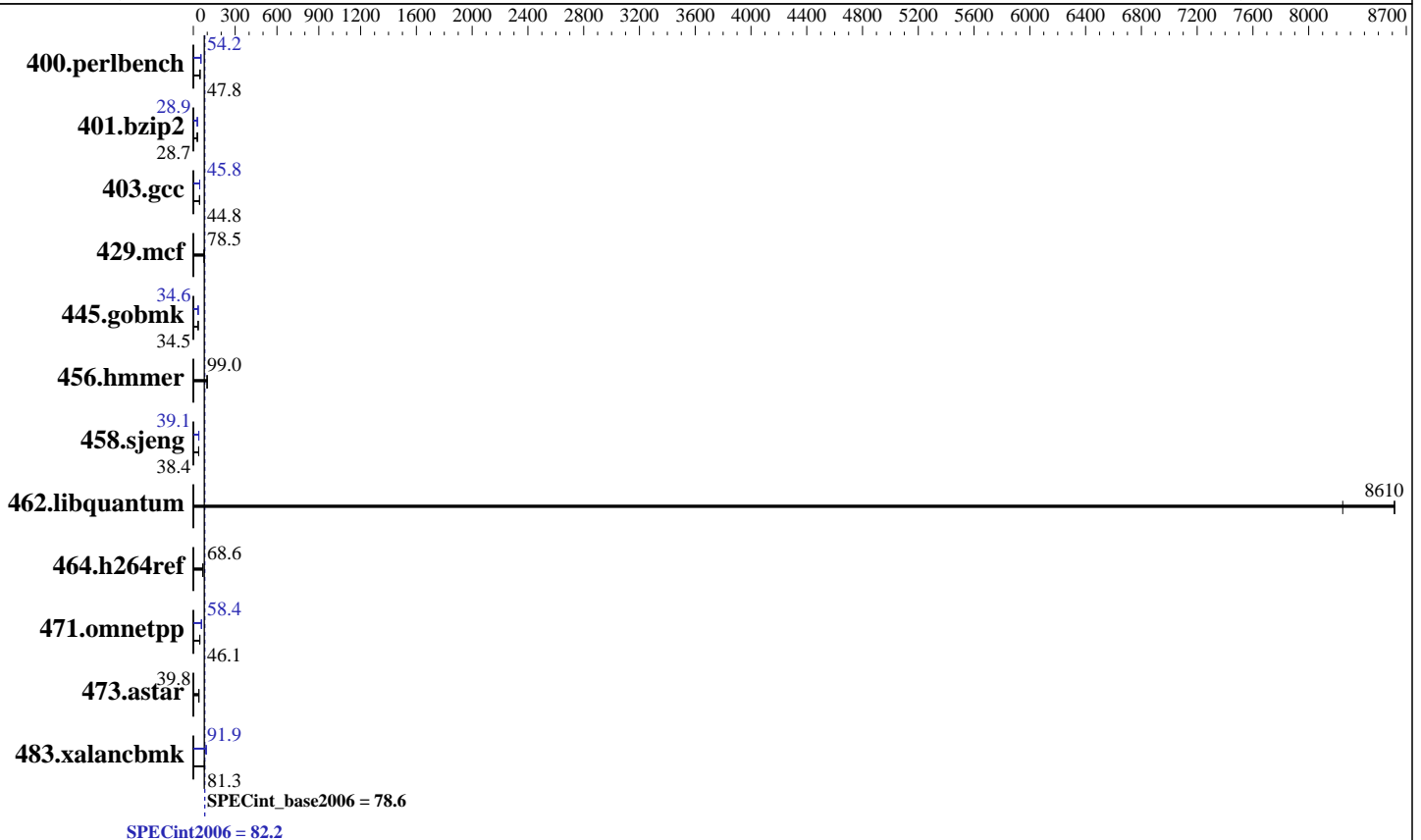
Test sponsor: Dell Inc.

Tested by: Dell Inc.

Test date: May-2017

Hardware Availability: Jul-2017

Software Availability: Nov-2016



Hardware

CPU Name: Intel Xeon Platinum 8176
 CPU Characteristics: Intel Turbo Boost Technology up to 3.80 GHz
 CPU MHz: 2100
 FPU: Integrated
 CPU(s) enabled: 56 cores, 2 chips, 28 cores/chip, 2 threads/core
 CPU(s) orderable: 1,2 chip
 Primary Cache: 32 KB I + 32 KB D on chip per core
 Secondary Cache: 1 MB I+D on chip per core
 L3 Cache: 38.5 MB I+D on chip per chip
 Other Cache: None
 Memory: 384 GB (24 x 16 GB 2Rx8 PC4-2666V-R)
 Disk Subsystem: 1 x 960 GB SATA SSD
 Other Hardware: None

Software

Operating System: Red Hat Enterprise Linux Server release 7.3 (Maipo)
 Compiler: 3.10.0-514.el7.x86_64 C/C++: Version 17.0.3.191 of Intel C/C++ Compiler for Linux
 Auto Parallel: Yes
 File System: xfs
 System State: Run level 3 (multi-user)
 Base Pointers: 32/64-bit
 Peak Pointers: 32/64-bit
 Other Software: Microquill SmartHeap V10.2



SPEC CINT2006 Result

Copyright 2006-2017 Standard Performance Evaluation Corporation

Dell Inc.

PowerEdge R740 (Intel Xeon Platinum 8176, 2.10 GHz)

SPECint2006 = **82.2**

SPECint_base2006 = **78.6**

CPU2006 license: 55
Test sponsor: Dell Inc.
Tested by: Dell Inc.

Test date: May-2017
Hardware Availability: Jul-2017
Software Availability: Nov-2016

Results Table

| Benchmark | Base | | | | | | Peak | | | | | |
|----------------|------------|-------------|-------------|-------------|-------------|-------------|-------------|-------------|-------------|-------------|-------------|-------------|
| | Seconds | Ratio | Seconds | Ratio | Seconds | Ratio | Seconds | Ratio | Seconds | Ratio | Seconds | Ratio |
| 400.perlbench | 205 | 47.6 | 204 | 47.8 | 203 | 48.1 | 180 | 54.3 | 180 | 54.2 | 180 | 54.2 |
| 401.bzip2 | 337 | 28.7 | 337 | 28.7 | 336 | 28.8 | 334 | 28.9 | 334 | 28.9 | 334 | 28.9 |
| 403.gcc | 179 | 45.1 | 180 | 44.7 | 179 | 44.8 | 176 | 45.7 | 176 | 45.8 | 176 | 45.8 |
| 429.mcf | 116 | 78.5 | 115 | 79.4 | 119 | 76.9 | 116 | 78.5 | 115 | 79.4 | 119 | 76.9 |
| 445.gobmk | 304 | 34.5 | 304 | 34.5 | 304 | 34.5 | 304 | 34.6 | 304 | 34.6 | 304 | 34.5 |
| 456.hammer | 94.1 | 99.1 | 94.2 | 99.0 | 94.3 | 99.0 | 94.1 | 99.1 | 94.2 | 99.0 | 94.3 | 99.0 |
| 458.sjeng | 315 | 38.4 | 315 | 38.4 | 315 | 38.4 | 309 | 39.1 | 309 | 39.1 | 309 | 39.1 |
| 462.libquantum | 2.51 | 8240 | 2.40 | 8620 | 2.41 | 8610 | 2.51 | 8240 | 2.40 | 8620 | 2.41 | 8610 |
| 464.h264ref | 325 | 68.0 | 322 | 68.7 | 323 | 68.6 | 325 | 68.0 | 322 | 68.7 | 323 | 68.6 |
| 471.omnetpp | 136 | 46.1 | 136 | 46.0 | 133 | 46.9 | 107 | 58.4 | 106 | 59.1 | 109 | 57.5 |
| 473.astar | 176 | 39.8 | 177 | 39.8 | 178 | 39.5 | 176 | 39.8 | 177 | 39.8 | 178 | 39.5 |
| 483.xalancbmk | 84.5 | 81.7 | 84.8 | 81.3 | 86.9 | 79.4 | 75.1 | 91.9 | 74.9 | 92.2 | 75.1 | 91.9 |

Results appear in the order in which they were run. Bold underlined text indicates a median measurement.

Submit Notes

The numactl mechanism was used to bind copies to processors. The config file option 'submit' was used to generate numactl commands to bind each copy to a specific processor. For details, please see the config file.

Operating System Notes

Stack size set to unlimited using "ulimit -s unlimited"

Platform Notes

BIOS settings:
 Sub NUMA Cluster disabled
 Virtualization Technology disabled
 System Profile set to Custom
 CPU Performance set to Maximum Performance
 C States set to Autonomous
 C1E disabled
 Energy Efficient Turbo disabled
 Uncore Frequency set to Dynamic
 Energy Efficiency Policy set to Performance
 Memory Patrol Scrub disabled
 Logical Processor enabled
 CPU Interconnect Bus Link Power Management disabled
 PCI ASPM L1 Link Power Management disabled
 Sysinfo program /cpu2006-1.2_ic17u3/config/sysinfo.rev6993
 Revision 6993 of 2015-11-06 (b5e8d4b4eb51ed28d7f98696cbe290c1)
 running on localhost.localdomain Fri May 19 16:48:15 2017

Continued on next page



SPEC CINT2006 Result

Copyright 2006-2017 Standard Performance Evaluation Corporation

Dell Inc.

SPECint2006 = 82.2

PowerEdge R740 (Intel Xeon Platinum 8176, 2.10 GHz)

SPECint_base2006 = 78.6

CPU2006 license: 55
Test sponsor: Dell Inc.
Tested by: Dell Inc.

Test date: May-2017
Hardware Availability: Jul-2017
Software Availability: Nov-2016

Platform Notes (Continued)

This section contains SUT (System Under Test) info as seen by some common utilities. To remove or add to this section, see: <http://www.spec.org/cpu2006/Docs/config.html#sysinfo>

```
From /proc/cpuinfo
model name : Intel(R) Xeon(R) Platinum 8176 CPU @ 2.10GHz
 2 "physical id"s (chips)
112 "processors"
cores, siblings (Caution: counting these is hw and system dependent. The
following excerpts from /proc/cpuinfo might not be reliable. Use with
caution.)
cpu cores : 28
siblings : 56
physical 0: cores 0 1 2 3 4 5 6 8 9 10 11 12 13 14 16 17 18 19 20 21 22 24
25 26 27 28 29 30
physical 1: cores 0 1 2 3 4 5 6 8 9 10 11 12 13 14 16 17 18 19 20 21 22 24
25 26 27 28 29 30
cache size : 39424 KB
```

```
From /proc/meminfo
MemTotal: 394871028 kB
HugePages_Total: 0
Hugepagesize: 2048 kB
```

```
From /etc/*release* /etc/*version*
os-release:
NAME="Red Hat Enterprise Linux Server"
VERSION="7.3 (Maipo)"
ID="rhel"
ID_LIKE="fedora"
VERSION_ID="7.3"
PRETTY_NAME="Red Hat Enterprise Linux Server 7.3 (Maipo)"
ANSI_COLOR="0;31"
CPE_NAME="cpe:/o:redhat:enterprise_linux:7.3:GA:server"
redhat-release: Red Hat Enterprise Linux Server release 7.3 (Maipo)
system-release: Red Hat Enterprise Linux Server release 7.3 (Maipo)
system-release-cpe: cpe:/o:redhat:enterprise_linux:7.3:ga:server
```

```
uname -a:
Linux localhost.localdomain 3.10.0-514.el7.x86_64 #1 SMP Wed Oct 19 11:24:13
EDT 2016 x86_64 x86_64 x86_64 GNU/Linux
```

```
run-level 3 May 19 16:47
```

```
SPEC is set to: /cpu2006-1.2_ic17u3
Filesystem Type Size Used Avail Use% Mounted on
/dev/sda2 xfs 838G 7.3G 831G 1% /
```

Additional information from dmidecode:

Warning: Use caution when you interpret this section. The 'dmidecode' program reads system data which is "intended to allow hardware to be accurately

Continued on next page



SPEC CINT2006 Result

Copyright 2006-2017 Standard Performance Evaluation Corporation

Dell Inc.

SPECint2006 = 82.2

PowerEdge R740 (Intel Xeon Platinum 8176, 2.10 GHz)

SPECint_base2006 = 78.6

CPU2006 license: 55

Test date: May-2017

Test sponsor: Dell Inc.

Hardware Availability: Jul-2017

Tested by: Dell Inc.

Software Availability: Nov-2016

Platform Notes (Continued)

determined", but the intent may not be met, as there are frequent changes to hardware, firmware, and the "DMTF SMBIOS" standard.

BIOS Dell Inc. 1.0.0 05/16/2017

Memory:

24x 00AD00B300AD HMA82GR7AFR8N-VK 16 GB 2 rank 2666 MHz

(End of data from sysinfo program)

General Notes

Environment variables set by runspec before the start of the run:

KMP_AFFINITY = "granularity=fine,scatter"

LD_LIBRARY_PATH = "/cpu2006-1.2_icl7u3/lib/ia32:/cpu2006-1.2_icl7u3/lib/intel64:/cpu2006-1.2_icl7u3/sh10.2"

OMP_NUM_THREADS = "56"

Binaries compiled on a system with 1x Intel Core i7-4790 CPU + 32GB RAM memory using Redhat Enterprise Linux 7.2

Transparent Huge Pages enabled by default.

Filesystem page cache cleared with:

shell invocation of 'sync; echo 3 > /proc/sys/vm/drop_caches' prior to run

Base Compiler Invocation

C benchmarks:

icc -m64

C++ benchmarks:

icpc -m64

Base Portability Flags

400.perlbench: -DSPEC_CPU_LP64 -DSPEC_CPU_LINUX_X64

401.bzip2: -DSPEC_CPU_LP64

403.gcc: -DSPEC_CPU_LP64

429.mcf: -DSPEC_CPU_LP64

445.gobmk: -DSPEC_CPU_LP64

456.hmmr: -DSPEC_CPU_LP64

458.sjeng: -DSPEC_CPU_LP64

462.libquantum: -DSPEC_CPU_LP64 -DSPEC_CPU_LINUX

464.h264ref: -DSPEC_CPU_LP64

471.omnetpp: -DSPEC_CPU_LP64

473.astar: -DSPEC_CPU_LP64

483.xalancbmk: -DSPEC_CPU_LP64 -DSPEC_CPU_LINUX



SPEC CINT2006 Result

Copyright 2006-2017 Standard Performance Evaluation Corporation

Dell Inc.

SPECint2006 = 82.2

PowerEdge R740 (Intel Xeon Platinum 8176, 2.10 GHz)

SPECint_base2006 = 78.6

CPU2006 license: 55

Test date: May-2017

Test sponsor: Dell Inc.

Hardware Availability: Jul-2017

Tested by: Dell Inc.

Software Availability: Nov-2016

Base Optimization Flags

C benchmarks:

`-xCORE-AVX2 -ipo -O3 -no-prec-div -parallel -qopt-prefetch
-auto-p32`

C++ benchmarks:

`-xCORE-AVX2 -ipo -O3 -no-prec-div -qopt-prefetch -auto-p32
-Wl,-z,muldefs -L/sh10.2 -lsmartheap64`

Base Other Flags

C benchmarks:

`403.gcc: -Dalloca=_alloca`

Peak Compiler Invocation

C benchmarks (except as noted below):

`icc -m64`

`400.perlbench: icc -m32 -L/opt/intel/compilers_and_libraries_2017/linux/lib/ia32`

`445.gobmk: icc -m32 -L/opt/intel/compilers_and_libraries_2017/linux/lib/ia32`

C++ benchmarks (except as noted below):

`icc -m32 -L/opt/intel/compilers_and_libraries_2017/linux/lib/ia32`

`473.astar: icpc -m64`

Peak Portability Flags

`400.perlbench: -D_FILE_OFFSET_BITS=64 -DSPEC_CPU_LINUX_IA32`

`401.bzip2: -DSPEC_CPU_LP64`

`403.gcc: -DSPEC_CPU_LP64`

`429.mcf: -DSPEC_CPU_LP64`

`445.gobmk: -D_FILE_OFFSET_BITS=64`

`456.hmmer: -DSPEC_CPU_LP64`

`458.sjeng: -DSPEC_CPU_LP64`

`462.libquantum: -DSPEC_CPU_LP64 -DSPEC_CPU_LINUX`

`464.h264ref: -DSPEC_CPU_LP64`

`471.omnetpp: -D_FILE_OFFSET_BITS=64`

`473.astar: -DSPEC_CPU_LP64`

`483.xalancbmk: -D_FILE_OFFSET_BITS=64 -DSPEC_CPU_LINUX`



SPEC CINT2006 Result

Copyright 2006-2017 Standard Performance Evaluation Corporation

Dell Inc.

PowerEdge R740 (Intel Xeon Platinum 8176, 2.10 GHz)

SPECint2006 = 82.2

SPECint_base2006 = 78.6

CPU2006 license: 55
Test sponsor: Dell Inc.
Tested by: Dell Inc.

Test date: May-2017
Hardware Availability: Jul-2017
Software Availability: Nov-2016

Peak Optimization Flags

C benchmarks:

- 400.perlbench: -prof-gen(pass 1) -prof-use(pass 2) -xCORE-AVX2(pass 2)
-par-num-threads=1(pass 1) -ipo(pass 2) -O3(pass 2)
-no-prec-div(pass 2) -qopt-prefetch
- 401.bzip2: -prof-gen(pass 1) -prof-use(pass 2) -xCORE-AVX2(pass 2)
-par-num-threads=1(pass 1) -ipo(pass 2) -O3(pass 2)
-no-prec-div -auto-ilp32 -qopt-prefetch
- 403.gcc: -xCORE-AVX2 -ipo -O3 -no-prec-div -inline-calloc
-qopt-malloc-options=3 -auto-ilp32
- 429.mcf: basepeak = yes
- 445.gobmk: -prof-gen(pass 1) -prof-use(pass 2) -xCORE-AVX2(pass 2)
-par-num-threads=1(pass 1) -ipo(pass 2) -O3(pass 2)
-no-prec-div(pass 2)
- 456.hmmer: basepeak = yes
- 458.sjeng: -prof-gen(pass 1) -prof-use(pass 2) -xCORE-AVX2(pass 2)
-par-num-threads=1(pass 1) -ipo(pass 2) -O3(pass 2)
-no-prec-div(pass 2) -unroll4
- 462.libquantum: basepeak = yes
- 464.h264ref: basepeak = yes

C++ benchmarks:

- 471.omnetpp: -prof-gen(pass 1) -prof-use(pass 2) -xCORE-AVX2(pass 2)
-par-num-threads=1(pass 1) -ipo(pass 2) -O3(pass 2)
-no-prec-div(pass 2) -qopt-ra-region-strategy=block
-Wl,-z,muldefs -L/sh10.2 -lsmartheap
- 473.astar: basepeak = yes
- 483.xalancbmk: -xCORE-AVX2 -ipo -O3 -no-prec-div -qopt-prefetch
-Wl,-z,muldefs -L/sh10.2 -lsmartheap

Peak Other Flags

C benchmarks:

- 403.gcc: -Dalloca=_alloca



SPEC CINT2006 Result

Copyright 2006-2017 Standard Performance Evaluation Corporation

Dell Inc.

PowerEdge R740 (Intel Xeon Platinum 8176, 2.10 GHz)

SPECint2006 = 82.2

SPECint_base2006 = 78.6

CPU2006 license: 55

Test sponsor: Dell Inc.

Tested by: Dell Inc.

Test date: May-2017

Hardware Availability: Jul-2017

Software Availability: Nov-2016

The flags files that were used to format this result can be browsed at

<http://www.spec.org/cpu2006/flags/Intel-ic17.0-official-linux64-revF.html>

<http://www.spec.org/cpu2006/flags/Dell-Platform-Flags-PowerEdge14G-revB.html>

You can also download the XML flags sources by saving the following links:

<http://www.spec.org/cpu2006/flags/Intel-ic17.0-official-linux64-revF.xml>

<http://www.spec.org/cpu2006/flags/Dell-Platform-Flags-PowerEdge14G-revB.xml>

SPEC and SPECint are registered trademarks of the Standard Performance Evaluation Corporation. All other brand and product names appearing in this result are trademarks or registered trademarks of their respective holders.

For questions about this result, please contact the tester.
For other inquiries, please contact webmaster@spec.org.

Tested with SPEC CPU2006 v1.2.
Report generated on Wed Jul 12 12:13:03 2017 by SPEC CPU2006 PS/PDF formatter v6932.
Originally published on 11 July 2017.