



SPEC® CINT2006 Result

Copyright 2006-2017 Standard Performance Evaluation Corporation

Lenovo Group Limited

SPECint®2006 = 74.7

Lenovo ThinkServer RD550
(2.20 GHz, Intel Xeon E5-2699R v4)

SPECint_base2006 = 72.5

CPU2006 license: 9017

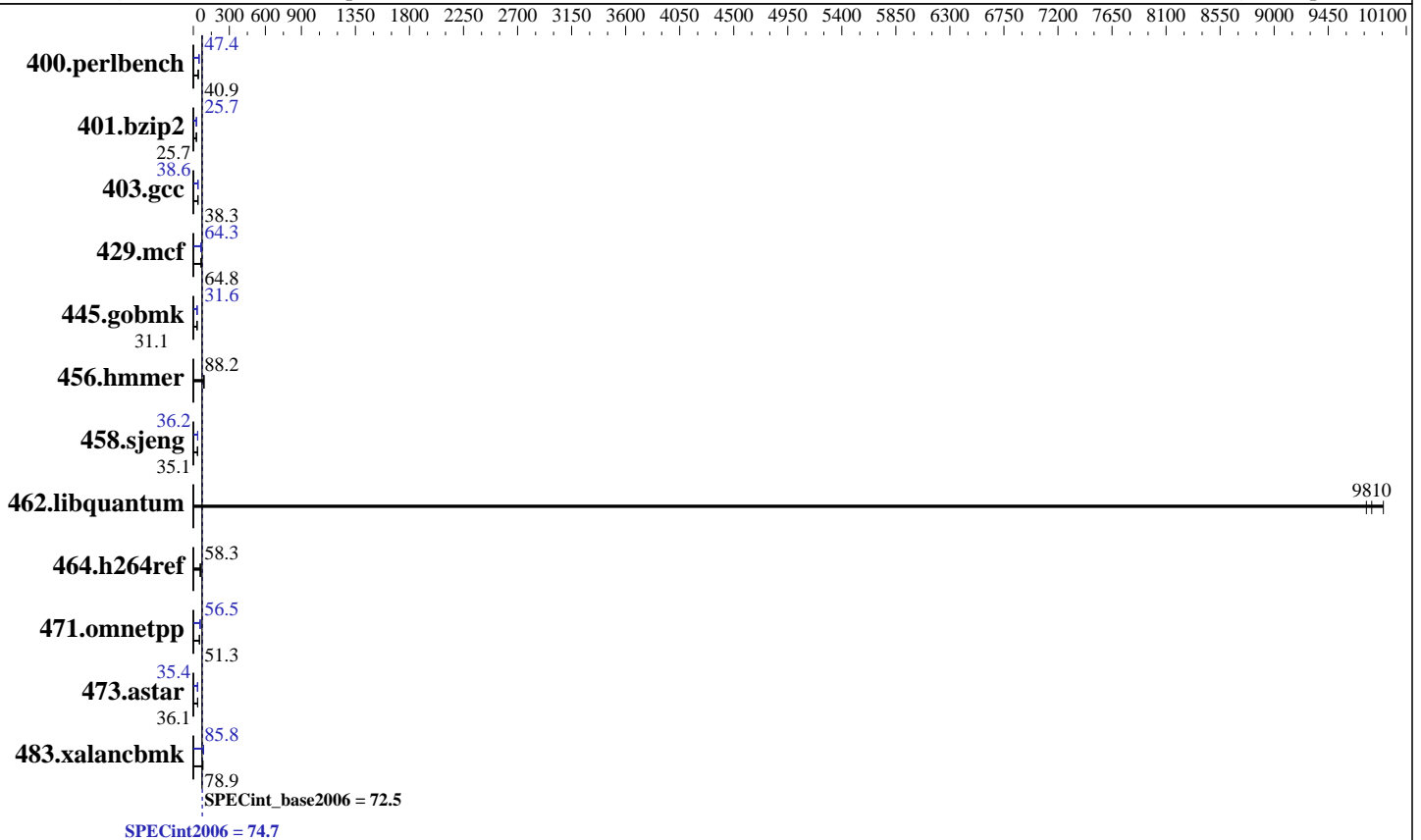
Test date: Dec-2016

Test sponsor: Lenovo Group Limited

Hardware Availability: Jan-2017

Tested by: Lenovo Group Limited

Software Availability: Sep-2016



Hardware

CPU Name: Intel Xeon E5-2699R v4
 CPU Characteristics: Intel Turbo Boost Technology up to 3.60 GHz
 CPU MHz: 2200
 FPU: Integrated
 CPU(s) enabled: 44 cores, 2 chips, 22 cores/chip
 CPU(s) orderable: 1,2 chips
 Primary Cache: 32 KB I + 32 KB D on chip per core
 Secondary Cache: 256 KB I+D on chip per core
 L3 Cache: 55 MB I+D on chip per chip
 Other Cache: None
 Memory: 256 GB (16 x 16 GB 2Rx4 PC4-2400T-R)
 Disk Subsystem: 1 x 800 GB SATA SSD
 Other Hardware: None

Software

Operating System: SUSE Linux Enterprise Server 12 SP1 (x86_64)
 Kernel 3.12.49-11-default
 Compiler: C/C++: Version 17.0.0.098 of Intel C/C++ Compiler for Linux
 Auto Parallel: Yes
 File System: xfs
 System State: Run level 3 (multi-user)
 Base Pointers: 32/64-bit
 Peak Pointers: 32/64-bit
 Other Software: Microquill SmartHeap V10.2



SPEC CINT2006 Result

Copyright 2006-2017 Standard Performance Evaluation Corporation

Lenovo Group Limited

Lenovo ThinkServer RD550
(2.20 GHz, Intel Xeon E5-2699R v4)

SPECint2006 = 74.7

SPECint_base2006 = 72.5

CPU2006 license: 9017

Test sponsor: Lenovo Group Limited

Tested by: Lenovo Group Limited

Test date: Dec-2016

Hardware Availability: Jan-2017

Software Availability: Sep-2016

Results Table

Benchmark	Base						Peak					
	Seconds	Ratio	Seconds	Ratio	Seconds	Ratio	Seconds	Ratio	Seconds	Ratio	Seconds	Ratio
400.perlbench	238	41.0	<u>239</u>	<u>40.9</u>	241	40.6	<u>206</u>	<u>47.4</u>	206	47.3	206	47.4
401.bzip2	376	25.7	<u>376</u>	<u>25.7</u>	378	25.5	<u>376</u>	<u>25.7</u>	376	25.7	375	25.7
403.gcc	210	38.3	<u>210</u>	<u>38.3</u>	210	38.4	<u>208</u>	<u>38.6</u>	208	38.6	208	38.7
429.mcf	<u>141</u>	<u>64.8</u>	141	64.6	139	65.7	140	65.3	144	63.4	<u>142</u>	<u>64.3</u>
445.gobmk	337	31.1	338	31.1	<u>338</u>	<u>31.1</u>	332	31.6	332	31.6	<u>332</u>	<u>31.6</u>
456.hammer	106	88.3	106	88.1	<u>106</u>	<u>88.2</u>	106	88.3	106	88.1	<u>106</u>	<u>88.2</u>
458.sjeng	344	35.2	<u>345</u>	<u>35.1</u>	346	35.0	<u>334</u>	<u>36.2</u>	335	36.2	334	36.2
462.libquantum	<u>2.11</u>	<u>9810</u>	2.12	9770	2.09	9910	<u>2.11</u>	<u>9810</u>	2.12	9770	2.09	9910
464.h264ref	381	58.2	<u>379</u>	<u>58.3</u>	378	58.5	381	58.2	<u>379</u>	<u>58.3</u>	378	58.5
471.omnetpp	<u>122</u>	<u>51.3</u>	121	51.5	124	50.5	111	56.5	<u>111</u>	<u>56.5</u>	110	56.6
473.astar	196	35.9	<u>195</u>	<u>36.1</u>	194	36.1	198	35.4	<u>198</u>	<u>35.4</u>	200	35.1
483.xalancbmk	87.1	79.2	<u>87.5</u>	<u>78.9</u>	88.1	78.3	80.3	85.9	<u>80.4</u>	<u>85.8</u>	81.2	85.0

Results appear in the order in which they were run. Bold underlined text indicates a median measurement.

Submit Notes

The config file option 'submit' was used.

Operating System Notes

Stack size set to unlimited using "ulimit -s unlimited"
Transparent Huge Pages enabled with:
echo always > /sys/kernel/mm/transparent_hugepage/enabled

Platform Notes

BIOS Configuration:
Hyper-Threading set to Disabled
Cluster On Die set to Disabled
Early Snoop set to Enabled
Performance Profile set to Custom
C1E Support set to Disabled
Core C3 set to Disabled
Core C6 set to Disabled
CPU Performance and Energy Bias set to Disabled
Thermal Profile set to High Fan Speed
Memory Power Savings set to Disabled
Sysinfo program /home/cpu2006-1.2-ic16.0/config/sysinfo.rev6993
Revision 6993 of 2015-11-06 (b5e8d4b4eb51ed28d7f98696cbe290c1)
running on RD550-02 Thu Dec 8 11:30:45 2016

This section contains SUT (System Under Test) info as seen by some common utilities. To remove or add to this section, see:

Continued on next page



SPEC CINT2006 Result

Copyright 2006-2017 Standard Performance Evaluation Corporation

Lenovo Group Limited

SPECint2006 = 74.7

Lenovo ThinkServer RD550
(2.20 GHz, Intel Xeon E5-2699R v4)

SPECint_base2006 = 72.5

CPU2006 license: 9017

Test date: Dec-2016

Test sponsor: Lenovo Group Limited

Hardware Availability: Jan-2017

Tested by: Lenovo Group Limited

Software Availability: Sep-2016

Platform Notes (Continued)

<http://www.spec.org/cpu2006/Docs/config.html#sysinfo>

From /proc/cpuinfo

model name : Intel(R) Xeon(R) CPU E5-2699R v4 @ 2.20GHz

2 "physical id"s (chips)

44 "processors"

cores, siblings (Caution: counting these is hw and system dependent. The following excerpts from /proc/cpuinfo might not be reliable. Use with caution.)

cpu cores : 22

siblings : 22

physical 0: cores 0 1 2 3 4 5 8 9 10 11 12 16 17 18 19 20 21 24 25 26 27 28

physical 1: cores 0 1 2 3 4 5 8 9 10 11 12 16 17 18 19 20 21 24 25 26 27 28

cache size : 56320 KB

From /proc/meminfo

MemTotal: 264557516 kB

HugePages_Total: 0

Hugepagesize: 2048 kB

From /etc/*release* /etc/*version*

SuSE-release:

SUSE Linux Enterprise Server 12 (x86_64)

VERSION = 12

PATCHLEVEL = 1

This file is deprecated and will be removed in a future service pack or release.

Please check /etc/os-release for details about this release.

os-release:

NAME="SLES"

VERSION="12-SP1"

VERSION_ID="12.1"

PRETTY_NAME="SUSE Linux Enterprise Server 12 SP1"

ID="sles"

ANSI_COLOR="0;32"

CPE_NAME="cpe:/o:suse:sles:12:sp1"

uname -a:

Linux RD550-02 3.12.49-11-default #1 SMP Wed Nov 11 20:52:43 UTC 2015
(8d714a0) x86_64 x86_64 x86_64 GNU/Linux

run-level 3 Dec 8 11:27

SPEC is set to: /home/cpu2006-1.2-ic16.0

Filesystem	Type	Size	Used	Avail	Use%	Mounted on
/dev/sda4	xfs	689G	17G	672G	3%	/home

Additional information from dmidecode:

Warning: Use caution when you interpret this section. The 'dmidecode' program reads system data which is "intended to allow hardware to be accurately

Continued on next page



SPEC CINT2006 Result

Copyright 2006-2017 Standard Performance Evaluation Corporation

Lenovo Group Limited

SPECint2006 = 74.7

Lenovo ThinkServer RD550
(2.20 GHz, Intel Xeon E5-2699R v4)

SPECint_base2006 = 72.5

CPU2006 license: 9017

Test date: Dec-2016

Test sponsor: Lenovo Group Limited

Hardware Availability: Jan-2017

Tested by: Lenovo Group Limited

Software Availability: Sep-2016

Platform Notes (Continued)

determined", but the intent may not be met, as there are frequent changes to hardware, firmware, and the "DMTF SMBIOS" standard.

BIOS LENOVO PB1TS362 03/24/2016

Memory:

16x Hynix Semiconductor HMA42GR7AFR4N-UH 16 GB 2 rank 2400 MHz

8x NO DIMM NO DIMM

(End of data from sysinfo program)

General Notes

Environment variables set by runspec before the start of the run:

KMP_AFFINITY = "granularity=fine,compact"

LD_LIBRARY_PATH = "/home/cpu2006-1.2-ic16.0/libs/32:/home/cpu2006-1.2-ic16.0/libs/64:/home/cpu2006-1.2-ic16.0/sh10.2"

OMP_NUM_THREADS = "44"

Binaries compiled on a system with 1x Intel Core i7-4790 CPU + 32GB RAM
memory using Redhat Enterprise Linux 7.2

Base Compiler Invocation

C benchmarks:

icc -m64

C++ benchmarks:

icpc -m64

Base Portability Flags

400.perlbench: -DSPEC_CPU_LP64 -DSPEC_CPU_LINUX_X64
401.bzip2: -DSPEC_CPU_LP64
403.gcc: -DSPEC_CPU_LP64
429.mcf: -DSPEC_CPU_LP64
445.gobmk: -DSPEC_CPU_LP64
456.hmmer: -DSPEC_CPU_LP64
458.sjeng: -DSPEC_CPU_LP64
462.libquantum: -DSPEC_CPU_LP64 -DSPEC_CPU_LINUX
464.h264ref: -DSPEC_CPU_LP64
471.omnetpp: -DSPEC_CPU_LP64
473.astar: -DSPEC_CPU_LP64
483.xalanbmk: -DSPEC_CPU_LP64 -DSPEC_CPU_LINUX



SPEC CINT2006 Result

Copyright 2006-2017 Standard Performance Evaluation Corporation

Lenovo Group Limited

SPECint2006 = 74.7

Lenovo ThinkServer RD550
(2.20 GHz, Intel Xeon E5-2699R v4)

SPECint_base2006 = 72.5

CPU2006 license: 9017

Test date: Dec-2016

Test sponsor: Lenovo Group Limited

Hardware Availability: Jan-2017

Tested by: Lenovo Group Limited

Software Availability: Sep-2016

Base Optimization Flags

C benchmarks:

-xCORE-AVX2 -ipo -O3 -no-prec-div -parallel -qopt-prefetch
-auto-p32

C++ benchmarks:

-xCORE-AVX2 -ipo -O3 -no-prec-div -qopt-prefetch -auto-p32
-Wl,-z,muldefs -L/sh10.2 -lsmartheap64

Base Other Flags

C benchmarks:

403.gcc: -Dalloca=_alloca

Peak Compiler Invocation

C benchmarks (except as noted below):

icc -m64

400.perlbench: icc -m32 -L/opt/intel/compilers_and_libraries_2017/linux/lib/ia32

445.gobmk: icc -m32 -L/opt/intel/compilers_and_libraries_2017/linux/lib/ia32

C++ benchmarks (except as noted below):

icc -m32 -L/opt/intel/compilers_and_libraries_2017/linux/lib/ia32

473.astar: icpc -m64

Peak Portability Flags

400.perlbench: -D_FILE_OFFSET_BITS=64 -DSPEC_CPU_LINUX_IA32

401.bzip2: -DSPEC_CPU_LP64

403.gcc: -DSPEC_CPU_LP64

429.mcf: -DSPEC_CPU_LP64

445.gobmk: -D_FILE_OFFSET_BITS=64

456.hmmer: -DSPEC_CPU_LP64

458.sjeng: -DSPEC_CPU_LP64

462.libquantum: -DSPEC_CPU_LP64 -DSPEC_CPU_LINUX

464.h264ref: -DSPEC_CPU_LP64

471.omnetpp: -D_FILE_OFFSET_BITS=64

473.astar: -DSPEC_CPU_LP64

483.xalancbmk: -D_FILE_OFFSET_BITS=64 -DSPEC_CPU_LINUX



SPEC CINT2006 Result

Copyright 2006-2017 Standard Performance Evaluation Corporation

Lenovo Group Limited

SPECint2006 = 74.7

Lenovo ThinkServer RD550
(2.20 GHz, Intel Xeon E5-2699R v4)

SPECint_base2006 = 72.5

CPU2006 license: 9017

Test date: Dec-2016

Test sponsor: Lenovo Group Limited

Hardware Availability: Jan-2017

Tested by: Lenovo Group Limited

Software Availability: Sep-2016

Peak Optimization Flags

C benchmarks:

400.perlbench: -prof-gen(pass 1) -prof-use(pass 2) -xCORE-AVX2(pass 2)
-par-num-threads=1(pass 1) -ipo(pass 2) -O3(pass 2)
-no-prec-div(pass 2) -qopt-prefetch

401.bzip2: -prof-gen(pass 1) -prof-use(pass 2) -xCORE-AVX2(pass 2)
-par-num-threads=1(pass 1) -ipo(pass 2) -O3(pass 2)
-no-prec-div -auto-ilp32 -qopt-prefetch

403.gcc: -xCORE-AVX2 -ipo -O3 -no-prec-div -inline-calloc
-qopt-malloc-options=3 -auto-ilp32

429.mcf: -xCORE-AVX2 -ipo -O3 -no-prec-div -parallel
-qopt-prefetch -auto-p32

445.gobmk: -prof-gen(pass 1) -prof-use(pass 2) -xCORE-AVX2(pass 2)
-par-num-threads=1(pass 1) -ipo(pass 2) -O3(pass 2)
-no-prec-div(pass 2)

456.hmmer: basepeak = yes

458.sjeng: -prof-gen(pass 1) -prof-use(pass 2) -xCORE-AVX2(pass 2)
-par-num-threads=1(pass 1) -ipo(pass 2) -O3(pass 2)
-no-prec-div(pass 2) -unroll4

462.libquantum: basepeak = yes

464.h264ref: basepeak = yes

C++ benchmarks:

471.omnetpp: -prof-gen(pass 1) -prof-use(pass 2) -xCORE-AVX2(pass 2)
-par-num-threads=1(pass 1) -ipo(pass 2) -O3(pass 2)
-no-prec-div(pass 2) -qopt-ra-region-strategy=block
-Wl,-z,muldefs -L/sh10.2 -lsmarheap

473.astar: -xCORE-AVX2 -ipo -O3 -no-prec-div -qopt-prefetch
-auto-p32 -Wl,-z,muldefs -L/sh10.2 -lsmarheap64

483.xalancbmk: -xCORE-AVX2 -ipo -O3 -no-prec-div -qopt-prefetch
-Wl,-z,muldefs -L/sh10.2 -lsmarheap

Peak Other Flags

C benchmarks:

Continued on next page



SPEC CINT2006 Result

Copyright 2006-2017 Standard Performance Evaluation Corporation

Lenovo Group Limited

SPECint2006 = 74.7

Lenovo ThinkServer RD550
(2.20 GHz, Intel Xeon E5-2699R v4)

SPECint_base2006 = 72.5

CPU2006 license: 9017

Test date: Dec-2016

Test sponsor: Lenovo Group Limited

Hardware Availability: Jan-2017

Tested by: Lenovo Group Limited

Software Availability: Sep-2016

Peak Other Flags (Continued)

403.gcc: -Dalloca=_alloca

The flags files that were used to format this result can be browsed at

<http://www.spec.org/cpu2006/flags/Intel-ic17.0-official-linux64.html>

<http://www.spec.org/cpu2006/flags/Lenovo-Platform-Settings-V1.2-BDW-revE.html>

You can also download the XML flags sources by saving the following links:

<http://www.spec.org/cpu2006/flags/Intel-ic17.0-official-linux64.xml>

<http://www.spec.org/cpu2006/flags/Lenovo-Platform-Settings-V1.2-BDW-revE.xml>

SPEC and SPECint are registered trademarks of the Standard Performance Evaluation Corporation. All other brand and product names appearing in this result are trademarks or registered trademarks of their respective holders.

For questions about this result, please contact the tester.
For other inquiries, please contact webmaster@spec.org.

Tested with SPEC CPU2006 v1.2.
Report generated on Tue Feb 7 17:00:49 2017 by SPEC CPU2006 PS/PDF formatter v6932.
Originally published on 7 February 2017.