



SPEC® CFP2006 Result

Copyright 2006-2016 Standard Performance Evaluation Corporation

ACTION S.A.

ACTINA SOLAR 220 X6 (Intel Xeon E5-2640 v4, 2.40 GHz)

SPECfp®2006 = 111

SPECfp_base2006 = 106

CPU2006 license: 9008

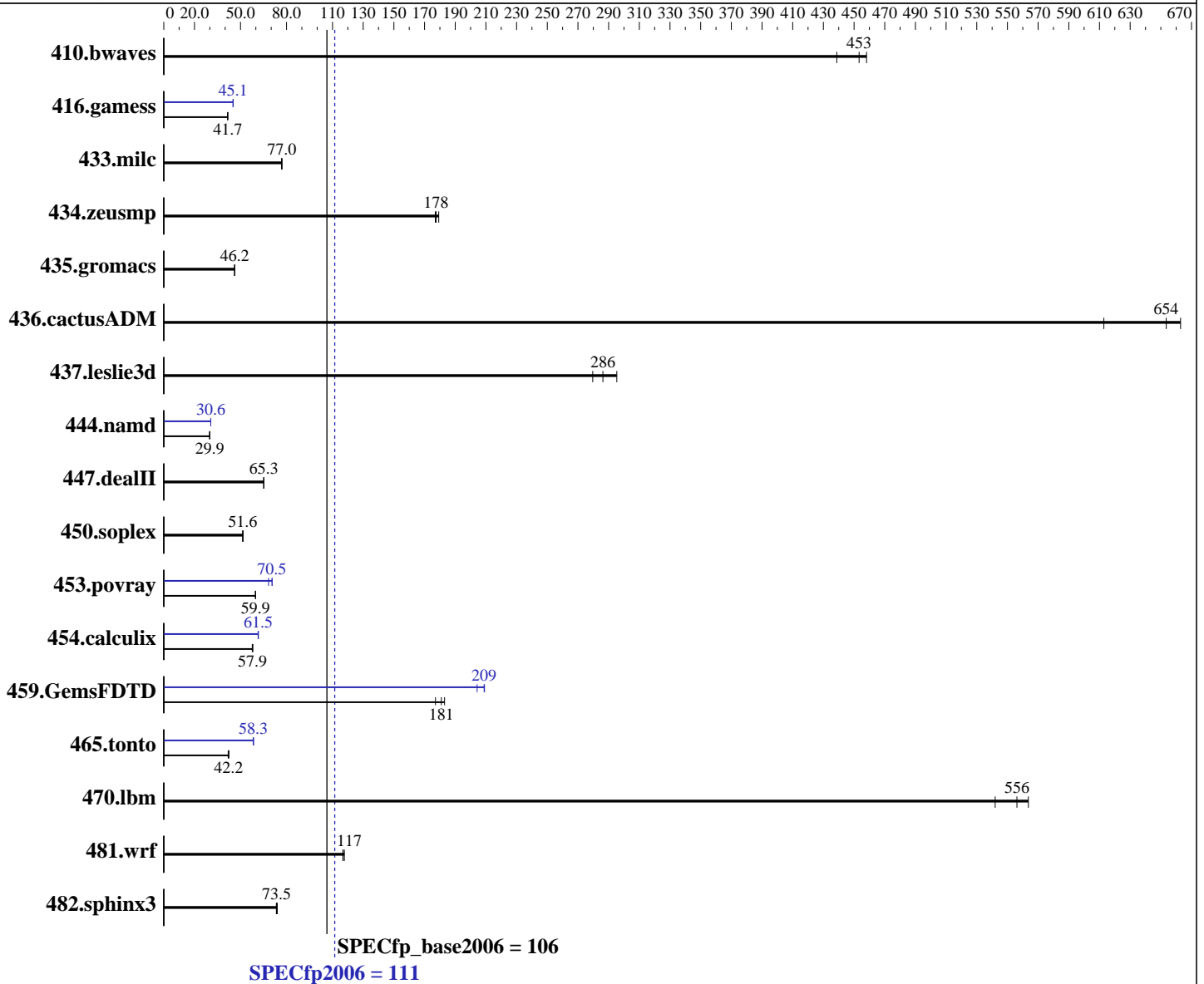
Test sponsor: ACTION S.A.

Tested by: ACTION S.A.

Test date: Nov-2016

Hardware Availability: Mar-2016

Software Availability: Mar-2016



Hardware

CPU Name: Intel Xeon E5-2640 v4
 CPU Characteristics: Intel Turbo Boost Technology up to 3.40 GHz
 CPU MHz: 2400
 FPU: Integrated
 CPU(s) enabled: 20 cores, 2 chips, 10 cores/chip
 CPU(s) orderable: 1,2 chips
 Primary Cache: 32 KB I + 32 KB D on chip per core
 Secondary Cache: 256 KB I+D on chip per core

Continued on next page

Software

Operating System: Red Hat Enterprise Linux Server release 7.2 (Maipo)
 3.10.0-327.18.2.el7.x86_64
 Compiler: C/C++: Version 17.0.0.098 of Intel C/C++ Compiler for Linux;
 Fortran: Version 17.0.0.098 of Intel Fortran Compiler for Linux
 Auto Parallel: Yes
 File System: ext4

Continued on next page



SPEC CFP2006 Result

Copyright 2006-2016 Standard Performance Evaluation Corporation

ACTION S.A.

ACTINA SOLAR 220 X6 (Intel Xeon E5-2640 v4, 2.40 GHz)

SPECfp2006 = **111**

SPECfp_base2006 = **106**

CPU2006 license: 9008

Test sponsor: ACTION S.A.

Tested by: ACTION S.A.

Test date: Nov-2016

Hardware Availability: Mar-2016

Software Availability: Mar-2016

L3 Cache: 25 MB I+D on chip per chip
Other Cache: None
Memory: 256 GB (16 x 16 GB 2Rx4 PC4-2400T-R, running at 2133 MHz)
Disk Subsystem: 1 x 240 GB SATA II SSD
Other Hardware: None

System State: Run level 3 (multi-user)
Base Pointers: 64-bit
Peak Pointers: 32/64-bit
Other Software: None

Results Table

Benchmark	Base						Peak					
	Seconds	Ratio	Seconds	Ratio	Seconds	Ratio	Seconds	Ratio	Seconds	Ratio	Seconds	Ratio
410.bwaves	31.0	439	29.7	458	30.0	453	31.0	439	29.7	458	30.0	453
416.gamess	469	41.7	469	41.7	471	41.6	434	45.1	432	45.3	434	45.1
433.milc	119	77.0	119	77.0	120	76.8	119	77.0	119	77.0	120	76.8
434.zeusmp	51.4	177	51.2	178	50.8	179	51.4	177	51.2	178	50.8	179
435.gromacs	154	46.3	155	46.2	155	46.1	154	46.3	155	46.2	155	46.1
436.cactusADM	18.0	663	19.5	613	18.3	654	18.0	663	19.5	613	18.3	654
437.leslie3d	32.8	286	31.8	295	33.6	280	32.8	286	31.8	295	33.6	280
444.namd	268	29.9	268	29.9	268	29.9	262	30.6	262	30.6	262	30.6
447.dealII	175	65.3	175	65.3	176	65.0	175	65.3	175	65.3	176	65.0
450.soplex	162	51.6	162	51.4	162	51.6	162	51.6	162	51.4	162	51.6
453.povray	89.2	59.6	88.8	59.9	88.8	59.9	77.9	68.3	75.4	70.5	75.3	70.6
454.calculix	142	58.0	142	57.9	143	57.7	134	61.7	134	61.5	134	61.5
459.GemsFDTD	58.0	183	59.9	177	58.6	181	50.8	209	51.9	204	50.7	209
465.tonto	234	42.0	233	42.2	232	42.4	169	58.3	168	58.6	169	58.3
470.lbm	24.7	556	25.4	542	24.4	564	24.7	556	25.4	542	24.4	564
481.wrf	94.9	118	95.7	117	95.6	117	94.9	118	95.7	117	95.6	117
482.sphinx3	263	74.0	266	73.4	265	73.5	263	74.0	266	73.4	265	73.5

Results appear in the order in which they were run. Bold underlined text indicates a median measurement.

Operating System Notes

Stack size set to unlimited using "ulimit -s unlimited"

Platform Notes

Bios Settings:
Intel(R) Hyper-Threading Tech = Disabled
Power & Performance = Performance
Enforce POR = Disabled
Memory Operating Speed Selection = 2133
Set FAN Profile = Performance
Fan PWM Offset = 0

Continued on next page



SPEC CFP2006 Result

Copyright 2006-2016 Standard Performance Evaluation Corporation

ACTION S.A.

ACTINA SOLAR 220 X6 (Intel Xeon E5-2640 v4, 2.40 GHz)

SPECfp2006 = 111

SPECfp_base2006 = 106

CPU2006 license: 9008

Test sponsor: ACTION S.A.

Tested by: ACTION S.A.

Test date: Nov-2016

Hardware Availability: Mar-2016

Software Availability: Mar-2016

Platform Notes (Continued)

Sysinfo program /cpu2006.1.2/config/sysinfo.rev6993
Revision 6993 of 2015-11-06 (b5e8d4b4eb51ed28d7f98696cbe290c1)
running on SUT Thu Nov 24 23:35:52 2016

This section contains SUT (System Under Test) info as seen by some common utilities. To remove or add to this section, see:
<http://www.spec.org/cpu2006/Docs/config.html#sysinfo>

```
From /proc/cpuinfo
model name : Intel(R) Xeon(R) CPU E5-2640 v4 @ 2.40GHz
 2 "physical id"s (chips)
 20 "processors"
cores, siblings (Caution: counting these is hw and system dependent. The
following excerpts from /proc/cpuinfo might not be reliable. Use with
caution.)
  cpu cores : 10
  siblings  : 10
  physical 0: cores 0 1 2 3 4 8 9 10 11 12
  physical 1: cores 0 1 2 3 4 8 9 10 11 12
cache size : 25600 KB
```

```
From /proc/meminfo
MemTotal:      263860776 kB
HugePages_Total:      1
Hugepagesize:    2048 kB
```

```
From /etc/*release* /etc/*version*
os-release:
NAME="Red Hat Enterprise Linux Server"
VERSION="7.2 (Maipo)"
ID="rhel"
ID_LIKE="fedora"
VERSION_ID="7.2"
PRETTY_NAME="Red Hat Enterprise Linux"
ANSI_COLOR="0;31"
CPE_NAME="cpe:/o:redhat:enterprise_linux:7.2:GA:server"
os-release.rpmsave:
NAME="Red Hat Enterprise Linux Server"
VERSION="7.0 (Maipo)"
ID="rhel"
ID_LIKE="fedora"
VERSION_ID="7.0"
PRETTY_NAME="Red Hat Enterprise Linux"
ANSI_COLOR="0;31"
CPE_NAME="cpe:/o:redhat:enterprise_linux:7.0:GA:server"
redhat-release: Red Hat Enterprise Linux Server release 7.2 (Maipo)
system-release: Red Hat Enterprise Linux Server release 7.2 (Maipo)
system-release-cpe: cpe:/o:redhat:enterprise_linux:7.2:ga:server
```

```
uname -a:
Linux SUT 3.10.0-327.18.2.el7.x86_64 #2 SMP Wed Jun 1 17:37:13 CEST 2016
x86_64 x86_64 x86_64 GNU/Linux
```

Continued on next page



SPEC CFP2006 Result

Copyright 2006-2016 Standard Performance Evaluation Corporation

ACTION S.A.

SPECfp2006 = 111

ACTINA SOLAR 220 X6 (Intel Xeon E5-2640 v4, 2.40 GHz)

SPECfp_base2006 = 106

CPU2006 license: 9008

Test date: Nov-2016

Test sponsor: ACTION S.A.

Hardware Availability: Mar-2016

Tested by: ACTION S.A.

Software Availability: Mar-2016

Platform Notes (Continued)

run-level 3 Nov 24 09:21

SPEC is set to: /cpu2006.1.2

Filesystem	Type	Size	Used	Avail	Use%	Mounted on
/dev/sdal	ext4	212G	46G	155G	23%	/

Additional information from dmidecode:

Warning: Use caution when you interpret this section. The 'dmidecode' program reads system data which is "intended to allow hardware to be accurately determined", but the intent may not be met, as there are frequent changes to hardware, firmware, and the "DMTF SMBIOS" standard.

BIOS Intel Corporation SE5C610.86B.01.01.0019.101220160604 10/12/2016

Memory:

16x Hynix HMA42GR7AFR4N-UH 16 GB 2 rank 2400 MHz, configured at 2134 MHz
8x NO DIMM NO DIMM

(End of data from sysinfo program)

dmidecode does not properly detect memory modules

16 modules of 16 GB were used to run the test (256 GB total)

General Notes

Environment variables set by runspec before the start of the run:

KMP_AFFINITY = "granularity=fine,compact,1,0"

LD_LIBRARY_PATH = "/cpu2006.1.2/libs/32:/cpu2006.1.2/libs/64:/cpu2006.1.2/sh10.2"

OMP_NUM_THREADS = "20"

Binaries compiled on a system with 1x Intel Core i7-4790 CPU + 32GB RAM
memory using Redhat Enterprise Linux 7.2

Transparent Huge Pages enabled by default.

Base Compiler Invocation

C benchmarks:

icc -m64

C++ benchmarks:

icpc -m64

Fortran benchmarks:

ifort -m64

Benchmarks using both Fortran and C:

icc -m64 ifort -m64



SPEC CFP2006 Result

Copyright 2006-2016 Standard Performance Evaluation Corporation

ACTION S.A.

ACTINA SOLAR 220 X6 (Intel Xeon E5-2640 v4, 2.40 GHz)

SPECfp2006 = 111

SPECfp_base2006 = 106

CPU2006 license: 9008

Test sponsor: ACTION S.A.

Tested by: ACTION S.A.

Test date: Nov-2016

Hardware Availability: Mar-2016

Software Availability: Mar-2016

Base Portability Flags

```
410.bwaves: -DSPEC_CPU_LP64
416.gamess: -DSPEC_CPU_LP64
433.milc: -DSPEC_CPU_LP64
434.zeusmp: -DSPEC_CPU_LP64
435.gromacs: -DSPEC_CPU_LP64 -nofor_main
436.cactusADM: -DSPEC_CPU_LP64 -nofor_main
437.leslie3d: -DSPEC_CPU_LP64
444.namd: -DSPEC_CPU_LP64
447.dealII: -DSPEC_CPU_LP64
450.soplex: -DSPEC_CPU_LP64
453.povray: -DSPEC_CPU_LP64
454.calculix: -DSPEC_CPU_LP64 -nofor_main
459.GemsFDTD: -DSPEC_CPU_LP64
465.tonto: -DSPEC_CPU_LP64
470.lbm: -DSPEC_CPU_LP64
481.wrf: -DSPEC_CPU_LP64 -DSPEC_CPU_CASE_FLAG -DSPEC_CPU_LINUX
482.sphinx3: -DSPEC_CPU_LP64
```

Base Optimization Flags

```
C benchmarks:
-xCORE-AVX2 -ipo -O3 -no-prec-div -parallel -qopt-prefetch

C++ benchmarks:
-xCORE-AVX2 -ipo -O3 -no-prec-div -qopt-prefetch

Fortran benchmarks:
-xCORE-AVX2 -ipo -O3 -no-prec-div -parallel -qopt-prefetch

Benchmarks using both Fortran and C:
-xCORE-AVX2 -ipo -O3 -no-prec-div -parallel -qopt-prefetch
```

Peak Compiler Invocation

```
C benchmarks:
icc -m64

C++ benchmarks:
icpc -m64

Fortran benchmarks:
ifort -m64

Benchmarks using both Fortran and C:
icc -m64 ifort -m64
```



SPEC CFP2006 Result

Copyright 2006-2016 Standard Performance Evaluation Corporation

ACTION S.A.

ACTINA SOLAR 220 X6 (Intel Xeon E5-2640 v4, 2.40 GHz)

SPECfp2006 = 111

SPECfp_base2006 = 106

CPU2006 license: 9008

Test sponsor: ACTION S.A.

Tested by: ACTION S.A.

Test date: Nov-2016

Hardware Availability: Mar-2016

Software Availability: Mar-2016

Peak Portability Flags

Same as Base Portability Flags

Peak Optimization Flags

C benchmarks:

433.milc: basepeak = yes

470.lbm: basepeak = yes

482.sphinx3: basepeak = yes

C++ benchmarks:

444.namd: -prof-gen(pass 1) -prof-use(pass 2) -xCORE-AVX2(pass 2)
-par-num-threads=1(pass 1) -ipo(pass 2) -O3(pass 2)
-no-prec-div(pass 2) -fno-alias -auto-ilp32

447.dealII: basepeak = yes

450.soplex: basepeak = yes

453.povray: -prof-gen(pass 1) -prof-use(pass 2) -xCORE-AVX2(pass 2)
-par-num-threads=1(pass 1) -ipo(pass 2) -O3(pass 2)
-no-prec-div(pass 2) -unroll4 -ansi-alias

Fortran benchmarks:

410.bwaves: basepeak = yes

416.gamess: -prof-gen(pass 1) -prof-use(pass 2) -xCORE-AVX2(pass 2)
-par-num-threads=1(pass 1) -ipo(pass 2) -O3(pass 2)
-no-prec-div(pass 2) -unroll2 -inline-level=0 -scalar-rep-

434.zeusmp: basepeak = yes

437.leslie3d: basepeak = yes

459.GemsFDTD: -prof-gen(pass 1) -prof-use(pass 2) -xCORE-AVX2(pass 2)
-par-num-threads=1(pass 1) -ipo(pass 2) -O3(pass 2)
-no-prec-div(pass 2) -unroll2 -inline-level=0
-qopt-prefetch -parallel

465.tonto: -prof-gen(pass 1) -prof-use(pass 2) -xCORE-AVX2(pass 2)
-par-num-threads=1(pass 1) -ipo(pass 2) -O3(pass 2)
-no-prec-div(pass 2) -inline-calloc -qopt-malloc-options=3
-auto -unroll4

Continued on next page



SPEC CFP2006 Result

Copyright 2006-2016 Standard Performance Evaluation Corporation

ACTION S.A.

ACTINA SOLAR 220 X6 (Intel Xeon E5-2640 v4, 2.40 GHz)

SPECfp2006 = 111

SPECfp_base2006 = 106

CPU2006 license: 9008

Test sponsor: ACTION S.A.

Tested by: ACTION S.A.

Test date: Nov-2016

Hardware Availability: Mar-2016

Software Availability: Mar-2016

Peak Optimization Flags (Continued)

Benchmarks using both Fortran and C:

435.gromacs: basepeak = yes

436.cactusADM: basepeak = yes

454.calculix: -xCORE-AVX2 -ipo -O3 -no-prec-div -auto-ilp32

481.wrf: basepeak = yes

The flags files that were used to format this result can be browsed at

<http://www.spec.org/cpu2006/flags/Intel-ic17.0-official-linux64.html>

<http://www.spec.org/cpu2006/flags/ACTION.SA-Platform-Flags-RevB-aug-2015-For-Intel-Platform.html>

You can also download the XML flags sources by saving the following links:

<http://www.spec.org/cpu2006/flags/Intel-ic17.0-official-linux64.xml>

<http://www.spec.org/cpu2006/flags/ACTION.SA-Platform-Flags-RevB-aug-2015-For-Intel-Platform.xml>

SPEC and SPECfp are registered trademarks of the Standard Performance Evaluation Corporation. All other brand and product names appearing in this result are trademarks or registered trademarks of their respective holders.

For questions about this result, please contact the tester.
For other inquiries, please contact webmaster@spec.org.

Tested with SPEC CPU2006 v1.2.

Report generated on Thu Dec 15 11:16:25 2016 by SPEC CPU2006 PS/PDF formatter v6932.

Originally published on 13 December 2016.