



SPEC® CINT2006 Result

Copyright 2006-2016 Standard Performance Evaluation Corporation

Huawei

SPECint®2006 = 62.9

Huawei CH121 V3 (Intel Xeon E5-2683 v4)

SPECint_base2006 = 60.7

CPU2006 license: 3175

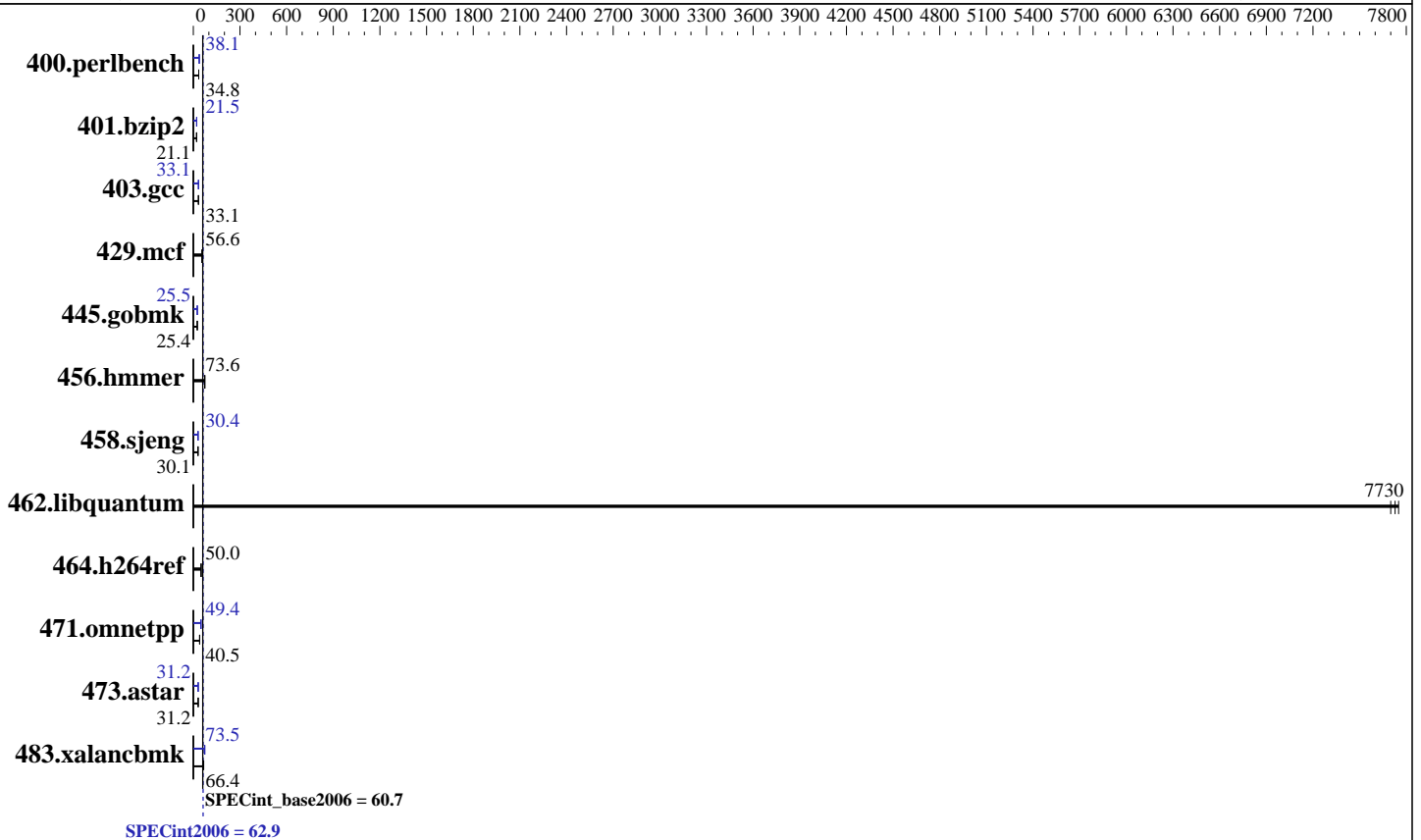
Test date: Nov-2016

Test sponsor: Huawei

Hardware Availability: Mar-2016

Tested by: Huawei

Software Availability: Nov-2015



Hardware

CPU Name: Intel Xeon E5-2683 v4
 CPU Characteristics: Intel Turbo Boost Technology up to 3.00 GHz
 CPU MHz: 2100
 FPU: Integrated
 CPU(s) enabled: 32 cores, 2 chips, 16 cores/chip
 CPU(s) orderable: 1,2 chip
 Primary Cache: 32 KB I + 32 KB D on chip per core
 Secondary Cache: 256 KB I+D on chip per core
 L3 Cache: 40 MB I+D on chip per chip
 Other Cache: None
 Memory: 512 GB (16 x 32 GB 2Rx4 PC4-2400T-R)
 Disk Subsystem: 1 x 1000 GB SATA, 7200 RPM
 Other Hardware: None

Software

Operating System: Red Hat Enterprise Linux Server release 7.2 (Maipo)
 3.10.0-327.el7.x86_64
 Compiler: C/C++: Version 16.0.0.101 of Intel C++ Studio XE for Linux
 Auto Parallel: Yes
 File System: xfs
 System State: Run level 3 (multi-user)
 Base Pointers: 32/64-bit
 Peak Pointers: 32/64-bit
 Other Software: Microquill SmartHeap V10.2



SPEC CINT2006 Result

Copyright 2006-2016 Standard Performance Evaluation Corporation

Huawei

SPECint2006 = 62.9

Huawei CH121 V3 (Intel Xeon E5-2683 v4)

SPECint_base2006 = 60.7

CPU2006 license: 3175
Test sponsor: Huawei
Tested by: Huawei

Test date: Nov-2016
Hardware Availability: Mar-2016
Software Availability: Nov-2015

Results Table

Benchmark	Base						Peak					
	Seconds	Ratio	Seconds	Ratio	Seconds	Ratio	Seconds	Ratio	Seconds	Ratio	Seconds	Ratio
400.perlbench	281	34.8	281	34.8	<u>281</u>	<u>34.8</u>	257	38.1	<u>256</u>	<u>38.1</u>	256	38.1
401.bzip2	457	21.1	455	21.2	<u>457</u>	<u>21.1</u>	448	21.6	448	21.5	<u>448</u>	<u>21.5</u>
403.gcc	243	33.1	244	33.0	<u>244</u>	<u>33.1</u>	243	33.1	<u>243</u>	<u>33.1</u>	243	33.1
429.mcf	161	56.7	163	55.9	<u>161</u>	<u>56.6</u>	161	56.7	163	55.9	<u>161</u>	<u>56.6</u>
445.gobmk	412	25.5	<u>413</u>	<u>25.4</u>	413	25.4	<u>411</u>	<u>25.5</u>	412	25.5	411	25.5
456.hammer	127	73.5	127	73.7	<u>127</u>	<u>73.6</u>	127	73.5	127	73.7	<u>127</u>	<u>73.6</u>
458.sjeng	<u>403</u>	<u>30.1</u>	402	30.1	403	30.1	<u>398</u>	<u>30.4</u>	398	30.4	398	30.4
462.libquantum	2.69	7700	2.67	7750	<u>2.68</u>	<u>7730</u>	2.69	7700	2.67	7750	<u>2.68</u>	<u>7730</u>
464.h264ref	<u>443</u>	<u>50.0</u>	443	50.0	444	49.9	<u>443</u>	<u>50.0</u>	443	50.0	444	49.9
471.omnetpp	152	41.2	155	40.4	<u>154</u>	<u>40.5</u>	<u>127</u>	<u>49.4</u>	129	48.4	126	49.5
473.astar	226	31.1	225	31.3	<u>225</u>	<u>31.2</u>	<u>225</u>	<u>31.2</u>	224	31.3	225	31.2
483.xalancbmk	<u>104</u>	<u>66.4</u>	104	66.5	104	66.4	<u>93.9</u>	<u>73.5</u>	93.9	73.5	94.3	73.1

Results appear in the order in which they were run. Bold underlined text indicates a median measurement.

Submit Notes

The config file option 'submit' was used.

Operating System Notes

Stack size set to unlimited using "ulimit -s unlimited"

Platform Notes

```

BIOS configuration:
Set Power Efficiency Mode to Performance
Set Snoop Mode to ES mode
Set Patrol Scrub to Disable
Set Hyper-Threading to Disable
Baseboard Management Controller used to adjust the fan speed to 100%
Sysinfo program /spec16/config/sysinfo.rev6914
$Rev: 6914 $ $Date:: 2014-06-25 #$ e3fbb8667b5a285932ceab81e28219e1
running on localhost.localdomain Tue Nov 1 14:42:48 2016

```

This section contains SUT (System Under Test) info as seen by some common utilities. To remove or add to this section, see: <http://www.spec.org/cpu2006/Docs/config.html#sysinfo>

```

From /proc/cpuinfo
model name : Intel(R) Xeon(R) CPU E5-2683 v4 @ 2.10GHz
2 "physical id"s (chips)
32 "processors"
cores, siblings (Caution: counting these is hw and system dependent. The
Continued on next page

```



SPEC CINT2006 Result

Copyright 2006-2016 Standard Performance Evaluation Corporation

Huawei

SPECint2006 = 62.9

Huawei CH121 V3 (Intel Xeon E5-2683 v4)

SPECint_base2006 = 60.7

CPU2006 license: 3175
Test sponsor: Huawei
Tested by: Huawei

Test date: Nov-2016
Hardware Availability: Mar-2016
Software Availability: Nov-2015

Platform Notes (Continued)

following excerpts from /proc/cpuinfo might not be reliable. Use with caution.)

```
cpu cores : 16
siblings  : 16
physical 0: cores 0 1 2 3 4 5 6 7 8 9 10 11 12 13 14 15
physical 1: cores 0 1 2 3 4 5 6 7 8 9 10 11 12 13 14 15
cache size : 40960 KB
```

```
From /proc/meminfo
MemTotal:      527792616 kB
HugePages_Total:      0
Hugepagesize:    2048 kB
```

```
From /etc/*release* /etc/*version*
os-release:
NAME="Red Hat Enterprise Linux Server"
VERSION="7.2 (Maipo)"
ID="rhel"
ID_LIKE="fedora"
VERSION_ID="7.2"
PRETTY_NAME="Red Hat Enterprise Linux Server 7.2 (Maipo)"
ANSI_COLOR="0;31"
CPE_NAME="cpe:/o:redhat:enterprise_linux:7.2:GA:server"
redhat-release: Red Hat Enterprise Linux Server release 7.2 (Maipo)
system-release: Red Hat Enterprise Linux Server release 7.2 (Maipo)
system-release-cpe: cpe:/o:redhat:enterprise_linux:7.2:ga:server
```

```
uname -a:
Linux localhost.localdomain 3.10.0-327.el7.x86_64 #1 SMP Thu Oct 29 17:29:29
EDT 2015 x86_64 x86_64 x86_64 GNU/Linux
```

run-level 3 Nov 1 08:38

```
SPEC is set to: /spec16
Filesystem      Type  Size Used Avail Use% Mounted on
/dev/sda3       xfs   911G 153G 758G 17% /
```

Additional information from dmidecode:

Warning: Use caution when you interpret this section. The 'dmidecode' program reads system data which is "intended to allow hardware to be accurately determined", but the intent may not be met, as there are frequent changes to hardware, firmware, and the "DMTF SMBIOS" standard.

```
BIOS Insyde Corp. 3.32 09/14/2016
Memory:
8x NO DIMM NO DIMM
16x Samsung M393A4K40BB1-CRC 32 GB 2 rank 2400 MHz
```

(End of data from sysinfo program)



SPEC CINT2006 Result

Copyright 2006-2016 Standard Performance Evaluation Corporation

Huawei

SPECint2006 = 62.9

Huawei CH121 V3 (Intel Xeon E5-2683 v4)

SPECint_base2006 = 60.7

CPU2006 license: 3175

Test sponsor: Huawei

Tested by: Huawei

Test date: Nov-2016

Hardware Availability: Mar-2016

Software Availability: Nov-2015

General Notes

Environment variables set by runspec before the start of the run:

KMP_AFFINITY = "granularity=fine,compact,1,0"

LD_LIBRARY_PATH = "/spec16/libs/32:/spec16/libs/64:/spec16/sh"

OMP_NUM_THREADS = "32"

Binaries compiled on a system with 1x Intel Core i5-4670K CPU + 32GB memory using RedHat EL 7.1

Transparent Huge Pages enabled with:

echo always > /sys/kernel/mm/transparent_hugepage/enabled

runspec command invoked through numactl i.e.:

numactl --interleave=all runspec <etc>

The Huawei CH121 V3 and Huawei CH222 V3

are electronically equivalent.

The results have been measured on a Huawei CH121 V3 model

Base Compiler Invocation

C benchmarks:

icc -m64

C++ benchmarks:

icpc -m64

Base Portability Flags

400.perlbench: -DSPEC_CPU_LP64 -DSPEC_CPU_LINUX_X64

401.bzip2: -DSPEC_CPU_LP64

403.gcc: -DSPEC_CPU_LP64

429.mcf: -DSPEC_CPU_LP64

445.gobmk: -DSPEC_CPU_LP64

456.hmmmer: -DSPEC_CPU_LP64

458.sjeng: -DSPEC_CPU_LP64

462.libquantum: -DSPEC_CPU_LP64 -DSPEC_CPU_LINUX

464.h264ref: -DSPEC_CPU_LP64

471.omnetpp: -DSPEC_CPU_LP64

473.astar: -DSPEC_CPU_LP64

483.xalancbmk: -DSPEC_CPU_LP64 -DSPEC_CPU_LINUX

Base Optimization Flags

C benchmarks:

-xCORE-AVX2 -ipo -O3 -no-prec-div -parallel -opt-prefetch -auto-p32

C++ benchmarks:

-xCORE-AVX2 -ipo -O3 -no-prec-div -opt-prefetch -auto-p32

-Wl,-z,muldefs -L/sh -lsmartheap64



SPEC CINT2006 Result

Copyright 2006-2016 Standard Performance Evaluation Corporation

Huawei

SPECint2006 = 62.9

Huawei CH121 V3 (Intel Xeon E5-2683 v4)

SPECint_base2006 = 60.7

CPU2006 license: 3175
Test sponsor: Huawei
Tested by: Huawei

Test date: Nov-2016
Hardware Availability: Mar-2016
Software Availability: Nov-2015

Base Other Flags

C benchmarks:

403.gcc: -Dalloca=_alloca

Peak Compiler Invocation

C benchmarks (except as noted below):

icc -m64

400.perlbench: icc -m32 -L/opt/intel/compilers_and_libraries_2016/linux/compiler/lib/ia32_lin

445.gobmk: icc -m32 -L/opt/intel/compilers_and_libraries_2016/linux/compiler/lib/ia32_lin

C++ benchmarks (except as noted below):

icpc -m32 -L/opt/intel/compilers_and_libraries_2016/linux/compiler/lib/ia32_lin

473.astar: icpc -m64

Peak Portability Flags

400.perlbench: -D_FILE_OFFSET_BITS=64 -DSPEC_CPU_LINUX_IA32

401.bzip2: -DSPEC_CPU_LP64

403.gcc: -DSPEC_CPU_LP64

429.mcf: -DSPEC_CPU_LP64

445.gobmk: -D_FILE_OFFSET_BITS=64

456.hmmmer: -DSPEC_CPU_LP64

458.sjeng: -DSPEC_CPU_LP64

462.libquantum: -DSPEC_CPU_LP64 -DSPEC_CPU_LINUX

464.h264ref: -DSPEC_CPU_LP64

471.omnetpp: -D_FILE_OFFSET_BITS=64

473.astar: -DSPEC_CPU_LP64

483.xalancbmk: -D_FILE_OFFSET_BITS=64 -DSPEC_CPU_LINUX

Peak Optimization Flags

C benchmarks:

400.perlbench: -xCORE-AVX2(pass 2) -prof-gen:threadsafe(pass 1)
-ipo(pass 2) -O3(pass 2) -no-prec-div(pass 2)
-par-num-threads=1(pass 1) -prof-use(pass 2) -opt-prefetch
-ansi-alias

401.bzip2: -xCORE-AVX2(pass 2) -prof-gen:threadsafe(pass 1)
-ipo(pass 2) -O3(pass 2) -no-prec-div
-par-num-threads=1(pass 1) -prof-use(pass 2) -auto-ilp32

Continued on next page



SPEC CINT2006 Result

Copyright 2006-2016 Standard Performance Evaluation Corporation

Huawei

SPECint2006 = 62.9

Huawei CH121 V3 (Intel Xeon E5-2683 v4)

SPECint_base2006 = 60.7

CPU2006 license: 3175

Test sponsor: Huawei

Tested by: Huawei

Test date: Nov-2016

Hardware Availability: Mar-2016

Software Availability: Nov-2015

Peak Optimization Flags (Continued)

401.bzip2 (continued):

-opt-prefetch -ansi-alias

403.gcc: -xCORE-AVX2 -ipo -O3 -no-prec-div -inline-calloc

-opt-malloc-options=3 -auto-ilp32

429.mcf: basepeak = yes

445.gobmk: -xCORE-AVX2(pass 2) -prof-gen:threadsafe(pass 1)

-prof-use(pass 2) -par-num-threads=1(pass 1) -ansi-alias

456.hmmcr: basepeak = yes

458.sjeng: -xCORE-AVX2(pass 2) -prof-gen:threadsafe(pass 1)

-ipo(pass 2) -O3(pass 2) -no-prec-div(pass 2)

-par-num-threads=1(pass 1) -prof-use(pass 2) -unroll4

462.libquantum: basepeak = yes

464.h264ref: basepeak = yes

C++ benchmarks:

471.omnetpp: -xCORE-AVX2(pass 2) -prof-gen:threadsafe(pass 1)

-ipo(pass 2) -O3(pass 2) -no-prec-div(pass 2)

-par-num-threads=1(pass 1) -prof-use(pass 2)

-opt-ra-region-strategy=block

-ansi-alias

-Wl,-z,muldefs -L/sh -lsmartheap

473.astar: -xCORE-AVX2 -ipo -O3 -no-prec-div -opt-prefetch

-auto-p32 -Wl,-z,muldefs -L/sh -lsmartheap64

483.xalancbmk: -xCORE-AVX2 -ipo -O3 -no-prec-div -opt-prefetch

-ansi-alias -Wl,-z,muldefs -L/sh -lsmartheap

Peak Other Flags

C benchmarks:

403.gcc: -Dalloca=_alloca

The flags files that were used to format this result can be browsed at

<http://www.spec.org/cpu2006/flags/Intel-ic16.0-official-linux64.html>

<http://www.spec.org/cpu2006/flags/Huawei-Platform-Settings-BDW-V1.0.html>

You can also download the XML flags sources by saving the following links:

<http://www.spec.org/cpu2006/flags/Intel-ic16.0-official-linux64.xml>

<http://www.spec.org/cpu2006/flags/Huawei-Platform-Settings-BDW-V1.0.xml>

Standard Performance Evaluation Corporation

info@spec.org

<http://www.spec.org/>



SPEC CINT2006 Result

Copyright 2006-2016 Standard Performance Evaluation Corporation

Huawei	SPECint2006 = 62.9
Huawei CH121 V3 (Intel Xeon E5-2683 v4)	SPECint_base2006 = 60.7

CPU2006 license: 3175
Test sponsor: Huawei
Tested by: Huawei

Test date: Nov-2016
Hardware Availability: Mar-2016
Software Availability: Nov-2015

SPEC and SPECint are registered trademarks of the Standard Performance Evaluation Corporation. All other brand and product names appearing in this result are trademarks or registered trademarks of their respective holders.

For questions about this result, please contact the tester.
 For other inquiries, please contact webmaster@spec.org.

Tested with SPEC CPU2006 v1.2.
 Report generated on Wed Nov 30 10:45:56 2016 by SPEC CPU2006 PS/PDF formatter v6932.
 Originally published on 29 November 2016.