



# SPEC<sup>®</sup> CFP2006 Result

Copyright 2006-2016 Standard Performance Evaluation Corporation

## Fujitsu

PRIMERGY CX2550 M2, Intel Xeon E5-2643 v4, 3.40 GHz

SPECfp<sup>®</sup>2006 = **122**

SPECfp\_base2006 = **118**

CPU2006 license: 19

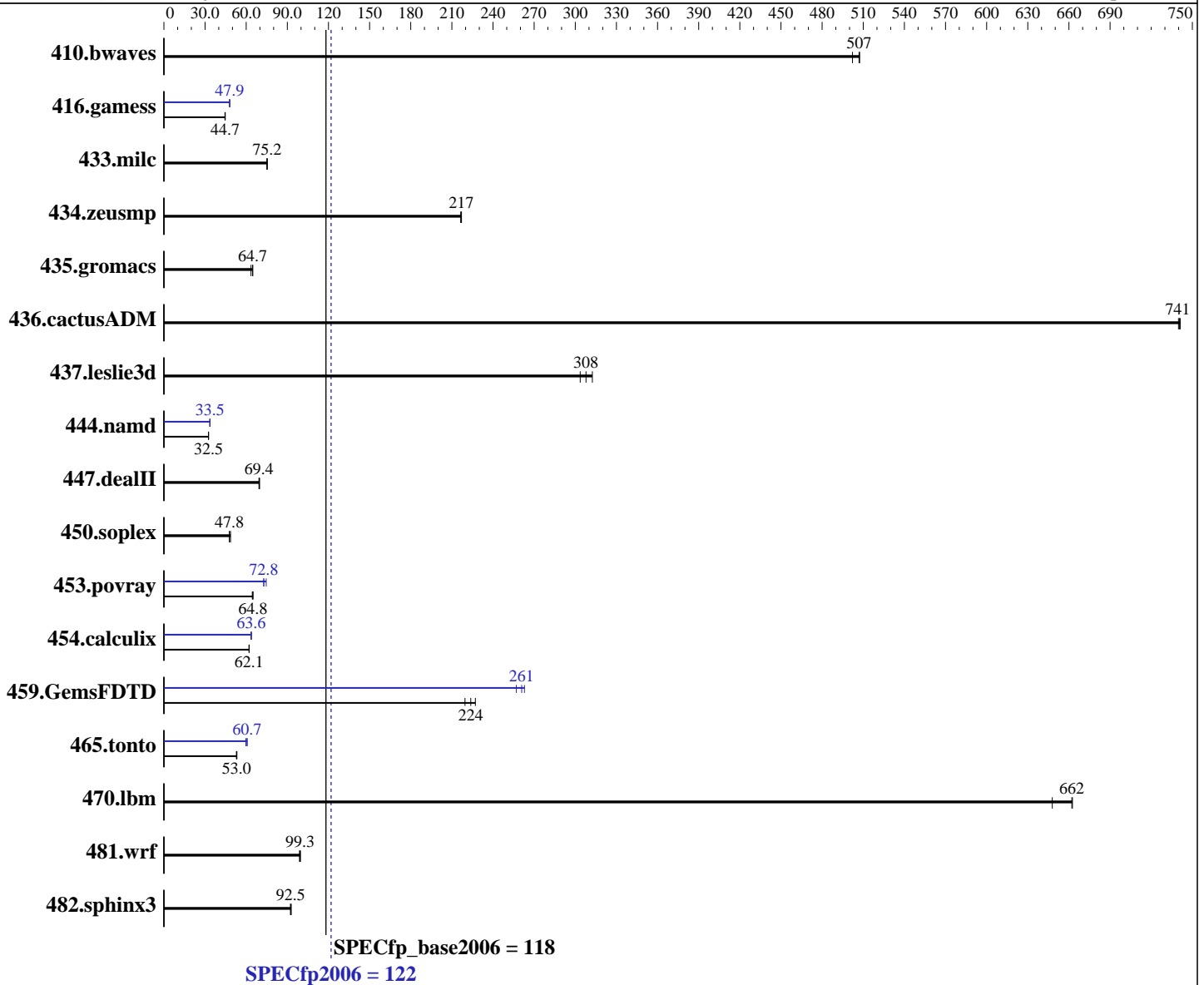
Test sponsor: Fujitsu

Tested by: Fujitsu

Test date: Jun-2016

Hardware Availability: Apr-2016

Software Availability: Sep-2015



### Hardware

CPU Name: Intel Xeon E5-2643 v4  
 CPU Characteristics: Intel Turbo Boost Technology up to 3.70 GHz  
 CPU MHz: 3400  
 FPU: Integrated  
 CPU(s) enabled: 12 cores, 2 chips, 6 cores/chip, 2 threads/core  
 CPU(s) orderable: 1,2 chip  
 Primary Cache: 32 KB I + 32 KB D on chip per core  
 Secondary Cache: 256 KB I+D on chip per core

Continued on next page

### Software

Operating System: SUSE Linux Enterprise Server 12 SP1 (x86\_64)  
 Kernel 3.12.49-11-default  
 Compiler: C/C++: Version 16.0.0.101 of Intel C++ Studio XE for Linux;  
 Fortran: Version 16.0.0.101 of Intel Fortran Studio XE for Linux  
 Auto Parallel: Yes  
 File System: xfs  
 System State: Run level 3 (multi-user)

Continued on next page



# SPEC CFP2006 Result

Copyright 2006-2016 Standard Performance Evaluation Corporation

## Fujitsu

PRIMERGY CX2550 M2, Intel Xeon E5-2643 v4, 3.40 GHz

SPECfp2006 = **122**

SPECfp\_base2006 = **118**

CPU2006 license: 19

Test sponsor: Fujitsu

Tested by: Fujitsu

Test date: Jun-2016

Hardware Availability: Apr-2016

Software Availability: Sep-2015

L3 Cache: 20 MB I+D on chip per chip  
Other Cache: None  
Memory: 256 GB (16 x 16 GB 2Rx4 PC4-2400T-R)  
Disk Subsystem: 1 x SATA, 1000 GB, 7200 RPM  
Other Hardware: None

Base Pointers: 64-bit  
Peak Pointers: 32/64-bit  
Other Software: None

## Results Table

Benchmark	Base						Peak					
	Seconds	Ratio	Seconds	Ratio	Seconds	Ratio	Seconds	Ratio	Seconds	Ratio	Seconds	Ratio
410.bwaves	27.1	502	26.8	507	<b>26.8</b>	<b>507</b>	27.1	502	26.8	507	<b>26.8</b>	<b>507</b>
416.gamess	440	44.5	<b>438</b>	<b>44.7</b>	438	44.7	409	47.9	<b>408</b>	<b>47.9</b>	408	48.0
433.milc	122	75.1	<b>122</b>	<b>75.2</b>	122	75.4	122	75.1	<b>122</b>	<b>75.2</b>	122	75.4
434.zeusmp	<b>42.0</b>	<b>217</b>	42.0	216	41.9	217	<b>42.0</b>	<b>217</b>	42.0	216	41.9	217
435.gromacs	112	63.5	110	64.8	<b>110</b>	<b>64.7</b>	112	63.5	110	64.8	<b>110</b>	<b>64.7</b>
436.cactusADM	<b>16.1</b>	<b>741</b>	16.2	740	16.1	741	<b>16.1</b>	<b>741</b>	16.2	740	16.1	741
437.leslie3d	31.0	304	<b>30.5</b>	<b>308</b>	30.1	312	31.0	304	<b>30.5</b>	<b>308</b>	30.1	312
444.namd	247	32.5	<b>247</b>	<b>32.5</b>	246	32.5	239	33.5	239	33.5	<b>239</b>	<b>33.5</b>
447.dealII	<b>165</b>	<b>69.4</b>	164	69.8	165	69.3	<b>165</b>	<b>69.4</b>	164	69.8	165	69.3
450.soplex	<b>175</b>	<b>47.8</b>	172	48.6	175	47.7	<b>175</b>	<b>47.8</b>	172	48.6	175	47.7
453.povray	81.9	65.0	<b>82.0</b>	<b>64.8</b>	82.5	64.5	73.1	72.8	<b>73.1</b>	<b>72.8</b>	71.3	74.6
454.calculix	133	62.2	<b>133</b>	<b>62.1</b>	133	62.1	129	63.8	130	63.5	<b>130</b>	<b>63.6</b>
459.GemsFDTD	46.7	227	<b>47.4</b>	<b>224</b>	48.3	220	<b>40.7</b>	<b>261</b>	40.4	263	41.3	257
465.tonto	186	52.9	<b>185</b>	<b>53.0</b>	185	53.3	<b>162</b>	<b>60.7</b>	162	60.7	165	59.8
470.lbm	<b>20.8</b>	<b>662</b>	21.2	648	20.7	663	<b>20.8</b>	<b>662</b>	21.2	648	20.7	663
481.wrf	113	98.9	112	99.6	<b>113</b>	<b>99.3</b>	113	98.9	112	99.6	<b>113</b>	<b>99.3</b>
482.sphinx3	<b>211</b>	<b>92.5</b>	210	92.8	211	92.3	<b>211</b>	<b>92.5</b>	210	92.8	211	92.3

Results appear in the order in which they were run. Bold underlined text indicates a median measurement.

## Operating System Notes

Stack size set to unlimited using "ulimit -s unlimited"

## Platform Notes

BIOS configuration:  
Energy Performance = Performance  
Utilization Profile = Unbalanced  
QPI snoop mode: Home Snoop  
COD Enable = Disabled, Early Snoop = Disabled, Home Snoop Dir OSB = Disabled  
CPU C1E Support = Disabled  
Sysinfo program /home/SPECcpu2006/config/sysinfo.rev6914  
\$Rev: 6914 \$ \$Date:: 2014-06-25 #\$ e3fbb8667b5a285932ceab81e28219e1  
running on CX2550M2 Wed Jun 29 09:04:15 2016

Continued on next page



# SPEC CFP2006 Result

Copyright 2006-2016 Standard Performance Evaluation Corporation

## Fujitsu

PRIMERGY CX2550 M2, Intel Xeon E5-2643 v4, 3.40 GHz

SPECfp2006 = 122

SPECfp\_base2006 = 118

CPU2006 license: 19  
Test sponsor: Fujitsu  
Tested by: Fujitsu

Test date: Jun-2016  
Hardware Availability: Apr-2016  
Software Availability: Sep-2015

### Platform Notes (Continued)

This section contains SUT (System Under Test) info as seen by some common utilities. To remove or add to this section, see: <http://www.spec.org/cpu2006/Docs/config.html#sysinfo>

```
From /proc/cpuinfo
model name      : Intel(R) Xeon(R) CPU E5-2643 v4 @ 3.40GHz
 2 "physical id"s (chips)
 24 "processors"
cores, siblings (Caution: counting these is hw and system dependent. The following excerpts from /proc/cpuinfo might not be reliable. Use with caution.)
  cpu cores      : 6
  siblings       : 12
  physical 0:    cores 0 1 2 3 6 7
  physical 1:    cores 0 1 2 3 6 7
cache size      : 20480 KB
```

```
From /proc/meminfo
MemTotal:        264387732 kB
HugePages_Total: 0
Hugepagesize:    2048 kB
```

```
/usr/bin/lsb_release -d
SUSE Linux Enterprise Server 12 SP1
```

```
From /etc/*release* /etc/*version*
SuSE-release:
SUSE Linux Enterprise Server 12 (x86_64)
VERSION = 12
PATCHLEVEL = 1
# This file is deprecated and will be removed in a future service pack or
release.
# Please check /etc/os-release for details about this release.
os-release:
NAME="SLES"
VERSION="12-SP1"
VERSION_ID="12.1"
PRETTY_NAME="SUSE Linux Enterprise Server 12 SP1"
ID="sles"
ANSI_COLOR="0;32"
CPE_NAME="cpe:/o:suse:sles:12:sp1"
```

```
uname -a:
Linux CX2550M2 3.12.49-11-default #1 SMP Wed Nov 11 20:52:43 UTC 2015
(8d714a0) x86_64 x86_64 x86_64 GNU/Linux
```

```
run-level 3 Jun 29 09:00 last=5
```

```
SPEC is set to: /home/SPECcpu2006
Filesystem      Type  Size  Used Avail Use% Mounted on
/dev/sda3       xfs   890G  36G  854G  5% /home
```

Additional information from dmidecode:

Continued on next page



# SPEC CFP2006 Result

Copyright 2006-2016 Standard Performance Evaluation Corporation

## Fujitsu

PRIMERGY CX2550 M2, Intel Xeon E5-2643 v4, 3.40 GHz

SPECfp2006 = 122

SPECfp\_base2006 = 118

CPU2006 license: 19  
Test sponsor: Fujitsu  
Tested by: Fujitsu

Test date: Jun-2016  
Hardware Availability: Apr-2016  
Software Availability: Sep-2015

## Platform Notes (Continued)

Warning: Use caution when you interpret this section. The 'dmidecode' program reads system data which is "intended to allow hardware to be accurately determined", but the intent may not be met, as there are frequent changes to hardware, firmware, and the "DMTF SMBIOS" standard.

BIOS FUJITSU // American Megatrends Inc. V5.0.0.11 R1.4.0 for D3343-B1x 03/17/2016

Memory:  
16x Hyundai Electronics (Hynix) HMA42GR7AFR4N-UH 16 GB 2 rank 2400 MHz

(End of data from sysinfo program)

## General Notes

Environment variables set by runspec before the start of the run:

```
KMP_AFFINITY = "granularity=fine,compact,1,0"
LD_LIBRARY_PATH = "/home/SPECcpu2006/libs/32:/home/SPECcpu2006/libs/64:/home/SPECcpu2006/sh"
OMP_NUM_THREADS = "12"
```

Binaries compiled on a system with 1x Intel Core i5-4670K CPU + 32GB memory using RedHat EL 7.1

Transparent Huge Pages enabled with:

```
echo always > /sys/kernel/mm/transparent_hugepage/enabled
```

For information about Fujitsu please visit: <http://www.fujitsu.com>

## Base Compiler Invocation

C benchmarks:  
icc -m64

C++ benchmarks:  
icpc -m64

Fortran benchmarks:  
ifort -m64

Benchmarks using both Fortran and C:  
icc -m64 ifort -m64

## Base Portability Flags

```
410.bwaves: -DSPEC_CPU_LP64
416.gamess: -DSPEC_CPU_LP64
433.milc: -DSPEC_CPU_LP64
434.zeusmp: -DSPEC_CPU_LP64
```

Continued on next page



# SPEC CFP2006 Result

Copyright 2006-2016 Standard Performance Evaluation Corporation

## Fujitsu

PRIMERGY CX2550 M2, Intel Xeon E5-2643 v4, 3.40 GHz

SPECfp2006 = 122

SPECfp\_base2006 = 118

CPU2006 license: 19  
Test sponsor: Fujitsu  
Tested by: Fujitsu

Test date: Jun-2016  
Hardware Availability: Apr-2016  
Software Availability: Sep-2015

## Base Portability Flags (Continued)

```
435.gromacs: -DSPEC_CPU_LP64 -nofor_main
436.cactusADM: -DSPEC_CPU_LP64 -nofor_main
437.leslie3d: -DSPEC_CPU_LP64
444.namd: -DSPEC_CPU_LP64
447.dealII: -DSPEC_CPU_LP64
450.soplex: -DSPEC_CPU_LP64
453.povray: -DSPEC_CPU_LP64
454.calculix: -DSPEC_CPU_LP64 -nofor_main
459.GemsFDTD: -DSPEC_CPU_LP64
465.tonto: -DSPEC_CPU_LP64
470.lbm: -DSPEC_CPU_LP64
481.wrf: -DSPEC_CPU_LP64 -DSPEC_CPU_CASE_FLAG -DSPEC_CPU_LINUX
482.sphinx3: -DSPEC_CPU_LP64
```

## Base Optimization Flags

C benchmarks:  
-xCORE-AVX2 -ipo -O3 -no-prec-div -parallel -opt-prefetch  
-ansi-alias

C++ benchmarks:  
-xCORE-AVX2 -ipo -O3 -no-prec-div -opt-prefetch -ansi-alias

Fortran benchmarks:  
-xCORE-AVX2 -ipo -O3 -no-prec-div -parallel -opt-prefetch

Benchmarks using both Fortran and C:  
-xCORE-AVX2 -ipo -O3 -no-prec-div -parallel -opt-prefetch  
-ansi-alias

## Peak Compiler Invocation

C benchmarks:  
icc -m64

C++ benchmarks:  
icpc -m64

Fortran benchmarks:  
ifort -m64

Benchmarks using both Fortran and C:  
icc -m64 ifort -m64



# SPEC CFP2006 Result

Copyright 2006-2016 Standard Performance Evaluation Corporation

## Fujitsu

PRIMERGY CX2550 M2, Intel Xeon E5-2643 v4, 3.40 GHz

SPECfp2006 = 122

SPECfp\_base2006 = 118

CPU2006 license: 19  
Test sponsor: Fujitsu  
Tested by: Fujitsu

Test date: Jun-2016  
Hardware Availability: Apr-2016  
Software Availability: Sep-2015

## Peak Portability Flags

Same as Base Portability Flags

## Peak Optimization Flags

C benchmarks:

433.milc: basepeak = yes

470.lbm: basepeak = yes

482.sphinx3: basepeak = yes

C++ benchmarks:

444.namd: -xCORE-AVX2(pass 2) -prof-gen:threadsafe(pass 1)  
-ipo(pass 2) -O3(pass 2) -no-prec-div(pass 2)  
-par-num-threads=1(pass 1) -prof-use(pass 2) -fno-alias  
-auto-ilp32

447.dealII: basepeak = yes

450.soplex: basepeak = yes

453.povray: -xCORE-AVX2(pass 2) -prof-gen:threadsafe(pass 1)  
-ipo(pass 2) -O3(pass 2) -no-prec-div(pass 2)  
-par-num-threads=1(pass 1) -prof-use(pass 2) -unroll4  
-ansi-alias

Fortran benchmarks:

410.bwaves: basepeak = yes

416.gamess: -xCORE-AVX2(pass 2) -prof-gen:threadsafe(pass 1)  
-ipo(pass 2) -O3(pass 2) -no-prec-div(pass 2)  
-par-num-threads=1(pass 1) -prof-use(pass 2) -unroll2  
-inline-level=0 -scalar-rep-

434.zeusmp: basepeak = yes

437.leslie3d: basepeak = yes

459.GemsFDTD: -xCORE-AVX2(pass 2) -prof-gen:threadsafe(pass 1)  
-ipo(pass 2) -O3(pass 2) -no-prec-div(pass 2)  
-par-num-threads=1(pass 1) -prof-use(pass 2) -unroll2  
-inline-level=0 -opt-prefetch -parallel

465.tonto: -xCORE-AVX2(pass 2) -prof-gen:threadsafe(pass 1)  
-ipo(pass 2) -O3(pass 2) -no-prec-div(pass 2)  
-par-num-threads=1(pass 1) -prof-use(pass 2) -inline-calloc

Continued on next page



# SPEC CFP2006 Result

Copyright 2006-2016 Standard Performance Evaluation Corporation

## Fujitsu

PRIMERGY CX2550 M2, Intel Xeon E5-2643 v4, 3.40 GHz

SPECfp2006 = 122

SPECfp\_base2006 = 118

CPU2006 license: 19

Test sponsor: Fujitsu

Tested by: Fujitsu

Test date: Jun-2016

Hardware Availability: Apr-2016

Software Availability: Sep-2015

## Peak Optimization Flags (Continued)

465.tonto (continued):

`-opt-malloc-options=3 -auto -unroll4`

Benchmarks using both Fortran and C:

435.gromacs: basepeak = yes

436.cactusADM: basepeak = yes

454.calculix: `-xCORE-AVX2 -ipo -O3 -no-prec-div -auto-ilp32 -ansi-alias`

481.wrf: basepeak = yes

The flags files that were used to format this result can be browsed at

<http://www.spec.org/cpu2006/flags/Intel-ic16.0-official-linux64.html>

<http://www.spec.org/cpu2006/flags/Fujitsu-Platform-Settings-V1.2-BDW-RevB.html>

You can also download the XML flags sources by saving the following links:

<http://www.spec.org/cpu2006/flags/Intel-ic16.0-official-linux64.xml>

<http://www.spec.org/cpu2006/flags/Fujitsu-Platform-Settings-V1.2-BDW-RevB.xml>

SPEC and SPECfp are registered trademarks of the Standard Performance Evaluation Corporation. All other brand and product names appearing in this result are trademarks or registered trademarks of their respective holders.

For questions about this result, please contact the tester.  
For other inquiries, please contact [webmaster@spec.org](mailto:webmaster@spec.org).

Tested with SPEC CPU2006 v1.2.

Report generated on Tue Sep 6 16:55:34 2016 by SPEC CPU2006 PS/PDF formatter v6932.

Originally published on 6 September 2016.