



# SPEC® CINT2006 Result

Copyright 2006-2016 Standard Performance Evaluation Corporation

Dell Inc.

SPECint®2006 = 43.5

PowerEdge R930 (Intel Xeon E7-4809 v4, 2.10 GHz)

SPECint\_base2006 = 41.5

CPU2006 license: 55

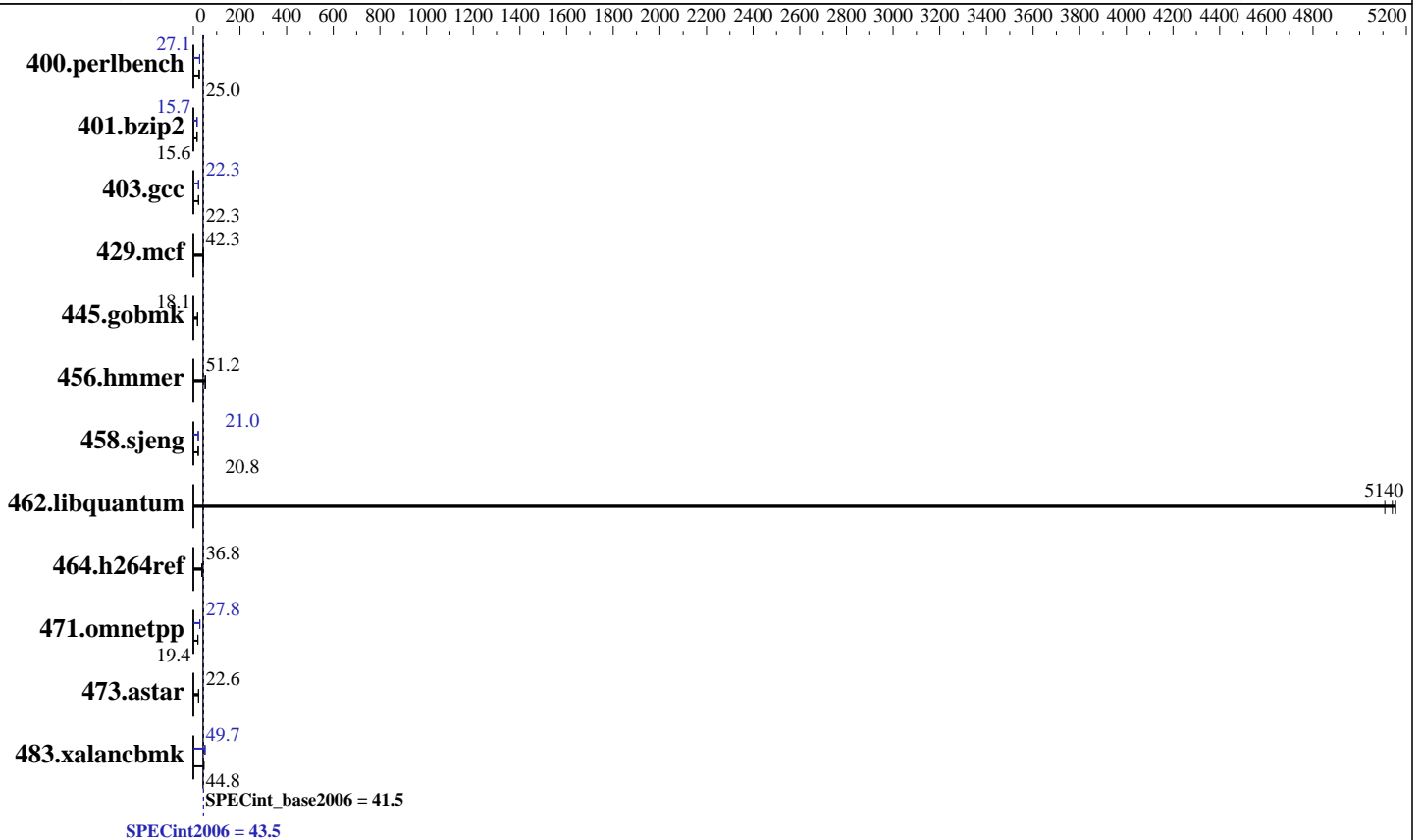
Test date: May-2016

Test sponsor: Dell Inc.

Hardware Availability: Jun-2016

Tested by: Dell Inc.

Software Availability: Dec-2015



## Hardware

CPU Name: Intel Xeon E7-4809 v4  
 CPU Characteristics: 2100  
 CPU MHz: Integrated  
 FPU: Integrated  
 CPU(s) enabled: 32 cores, 4 chips, 8 cores/chip, 2 threads/core  
 CPU(s) orderable: 2,4 chip  
 Primary Cache: 32 KB I + 32 KB D on chip per core  
 Secondary Cache: 256 KB I+D on chip per core  
 L3 Cache: 20 MB I+D on chip per chip  
 Other Cache: None  
 Memory: 512 GB (32 x 16 GB 2Rx4 PC4-2133P-R, running at 1333 MHz)  
 Disk Subsystem: 1 x 480 GB SAS SSD  
 Other Hardware: None

## Software

Operating System: SUSE Linux Enterprise Server 12 SP1 3.12.49-11-default  
 Compiler: C/C++: Version 16.0.0.101 of Intel C++ Studio XE for Linux  
 Auto Parallel: Yes  
 File System: xfs  
 System State: Run level 3 (multi-user)  
 Base Pointers: 32/64-bit  
 Peak Pointers: 32/64-bit  
 Other Software: Microquill SmartHeap V10.2



# SPEC CINT2006 Result

Copyright 2006-2016 Standard Performance Evaluation Corporation

Dell Inc.

SPECint2006 = 43.5

PowerEdge R930 (Intel Xeon E7-4809 v4, 2.10 GHz)

SPECint\_base2006 = 41.5

CPU2006 license: 55

Test date: May-2016

Test sponsor: Dell Inc.

Hardware Availability: Jun-2016

Tested by: Dell Inc.

Software Availability: Dec-2015

## Results Table

Benchmark	Base						Peak					
	Seconds	Ratio	Seconds	Ratio	Seconds	Ratio	Seconds	Ratio	Seconds	Ratio	Seconds	Ratio
400.perlbench	389	25.1	<b><u>391</u></b>	<b><u>25.0</u></b>	392	24.9	<b><u>360</u></b>	<b><u>27.1</u></b>	360	27.1	360	27.2
401.bzip2	621	15.5	616	15.7	<b><u>617</u></b>	<b><u>15.6</u></b>	<b><u>614</u></b>	<b><u>15.7</u></b>	614	15.7	615	15.7
403.gcc	356	22.6	<b><u>361</u></b>	<b><u>22.3</u></b>	362	22.2	<b><u>362</u></b>	<b><u>22.3</u></b>	363	22.2	359	22.4
429.mcf	214	42.6	222	41.2	<b><u>216</u></b>	<b><u>42.3</u></b>	214	42.6	222	41.2	<b><u>216</u></b>	<b><u>42.3</u></b>
445.gobmk	580	18.1	579	18.1	<b><u>579</u></b>	<b><u>18.1</u></b>	580	18.1	579	18.1	<b><u>579</u></b>	<b><u>18.1</u></b>
456.hammer	<b><u>182</u></b>	<b><u>51.2</u></b>	182	51.3	182	51.2	<b><u>182</u></b>	<b><u>51.2</u></b>	182	51.3	182	51.2
458.sjeng	581	20.8	<b><u>582</u></b>	<b><u>20.8</u></b>	582	20.8	<b><u>575</u></b>	<b><u>21.0</u></b>	575	21.0	575	21.0
462.libquantum	<b><u>4.03</u></b>	<b><u>5140</u></b>	4.02	5150	4.06	5110	<b><u>4.03</u></b>	<b><u>5140</u></b>	4.02	5150	4.06	5110
464.h264ref	601	36.8	601	36.8	<b><u>601</u></b>	<b><u>36.8</u></b>	601	36.8	601	36.8	<b><u>601</u></b>	<b><u>36.8</u></b>
471.omnetpp	<b><u>322</u></b>	<b><u>19.4</u></b>	331	18.9	315	19.8	<b><u>225</u></b>	<b><u>27.8</u></b>	224	28.0	227	27.6
473.astar	<b><u>311</u></b>	<b><u>22.6</u></b>	311	22.6	310	22.6	<b><u>311</u></b>	<b><u>22.6</u></b>	311	22.6	310	22.6
483.xalancbmk	155	44.7	<b><u>154</u></b>	<b><u>44.8</u></b>	152	45.3	<b><u>139</u></b>	<b><u>49.7</u></b>	137	50.2	140	49.4

Results appear in the order in which they were run. Bold underlined text indicates a median measurement.

## Submit Notes

The config file option 'submit' was used.

## Operating System Notes

Stack size set to unlimited using "ulimit -s unlimited"

## Platform Notes

BIOS settings:

Snoop mode set to Home Snoop

Virtualization Technology disabled

System Profile set to custom

CPU Performance set to Maximum Performance

C States set to disabled

C1E disabled

Uncore Frequency set to Dynamic

Energy Efficiency Policy set to Performance

Memory Patrol Scrub disabled

Sysinfo program /root/ic16.0\_Sept12\_2015/config/sysinfo.rev6914

\$Rev: 6914 \$ \$Date:: 2014-06-25 # \$ e3fbb8667b5a285932ceab81e28219e1

running on bdx-perf03 Fri May 6 08:59:37 2016

This section contains SUT (System Under Test) info as seen by some common utilities. To remove or add to this section, see:

<http://www.spec.org/cpu2006/Docs/config.html#sysinfo>

From /proc/cpuinfo

Continued on next page

Standard Performance Evaluation Corporation

info@spec.org

<http://www.spec.org/>

Page 2



# SPEC CINT2006 Result

Copyright 2006-2016 Standard Performance Evaluation Corporation

Dell Inc.

SPECint2006 = 43.5

PowerEdge R930 (Intel Xeon E7-4809 v4, 2.10 GHz)

SPECint\_base2006 = 41.5

CPU2006 license: 55

Test date: May-2016

Test sponsor: Dell Inc.

Hardware Availability: Jun-2016

Tested by: Dell Inc.

Software Availability: Dec-2015

## Platform Notes (Continued)

```

model name : Intel(R) Xeon(R) CPU E7-4809 v4 @ 2.10GHz
 4 "physical id"s (chips)
 64 "processors"
cores, siblings (Caution: counting these is hw and system dependent. The
following excerpts from /proc/cpuinfo might not be reliable. Use with
caution.)
  cpu cores : 8
  siblings  : 16
  physical 0: cores 0 1 2 3 4 5 6 7
  physical 1: cores 0 1 2 3 4 5 6 7
  physical 2: cores 0 1 2 3 4 5 6 7
  physical 3: cores 0 1 2 3 4 5 6 7
cache size : 20480 KB

```

```

From /proc/meminfo
MemTotal:      529322532 kB
HugePages_Total:      0
Hugepagesize:    2048 kB

```

```

/usr/bin/lsb_release -d
SUSE Linux Enterprise Server 12 SP1

```

```

From /etc/*release* /etc/*version*
SuSE-release:
SUSE Linux Enterprise Server 12 (x86_64)
VERSION = 12
PATCHLEVEL = 1
# This file is deprecated and will be removed in a future service pack or
release.
# Please check /etc/os-release for details about this release.
os-release:
NAME="SLES"
VERSION="12-SP1"
VERSION_ID="12.1"
PRETTY_NAME="SUSE Linux Enterprise Server 12 SP1"
ID="sles"
ANSI_COLOR="0;32"
CPE_NAME="cpe:/o:suse:sles:12:sp1"

```

```

uname -a:
Linux bdx-perf03 3.12.49-11-default #1 SMP Wed Nov 11 20:52:43 UTC 2015
(8d714a0) x86_64 x86_64 x86_64 GNU/Linux

```

run-level 3 May 6 08:57

```

SPEC is set to: /root/ic16.0_Sept12_2015
Filesystem      Type  Size  Used Avail Use% Mounted on
/dev/sda3       xfs   368G   36G  332G  10% /

```

Additional information from dmidecode:

Warning: Use caution when you interpret this section. The 'dmidecode' program reads system data which is "intended to allow hardware to be accurately

Continued on next page



# SPEC CINT2006 Result

Copyright 2006-2016 Standard Performance Evaluation Corporation

Dell Inc.

SPECint2006 = 43.5

PowerEdge R930 (Intel Xeon E7-4809 v4, 2.10 GHz)

SPECint\_base2006 = 41.5

CPU2006 license: 55

Test date: May-2016

Test sponsor: Dell Inc.

Hardware Availability: Jun-2016

Tested by: Dell Inc.

Software Availability: Dec-2015

## Platform Notes (Continued)

determined", but the intent may not be met, as there are frequent changes to hardware, firmware, and the "DMTF SMBIOS" standard.

BIOS Dell Inc. 2.0.1 04/20/2016

Memory:

32x 00AD00B300AD HMA42GR7MFR4N-TF 16 GB 2 rank 2133 MHz, configured at 1333 MHz

64x Not Specified Not Specified

(End of data from sysinfo program)

## General Notes

Environment variables set by runspec before the start of the run:

KMP\_AFFINITY = "granularity=fine,scatter"

LD\_LIBRARY\_PATH = "/root/ic16.0\_Sept12\_2015/libs/32:/root/ic16.0\_Sept12\_2015/libs/64:/root/ic16.0\_Sept12\_2015/sh"

OMP\_NUM\_THREADS = "32"

Binaries compiled on a system with 1x Intel Core i5-4670K CPU + 32GB memory using RedHat EL 7.1

Transparent Huge Pages enabled with:

echo always > /sys/kernel/mm/transparent\_hugepage/enabled

## Base Compiler Invocation

C benchmarks:

icc -m64

C++ benchmarks:

icpc -m64

## Base Portability Flags

400.perlbench: -DSPEC\_CPU\_LP64 -DSPEC\_CPU\_LINUX\_X64  
401.bzip2: -DSPEC\_CPU\_LP64  
403.gcc: -DSPEC\_CPU\_LP64  
429.mcf: -DSPEC\_CPU\_LP64  
445.gobmk: -DSPEC\_CPU\_LP64  
456.hmmmer: -DSPEC\_CPU\_LP64  
458.sjeng: -DSPEC\_CPU\_LP64  
462.libquantum: -DSPEC\_CPU\_LP64 -DSPEC\_CPU\_LINUX  
464.h264ref: -DSPEC\_CPU\_LP64  
471.omnetpp: -DSPEC\_CPU\_LP64  
473.astar: -DSPEC\_CPU\_LP64  
483.xalancbmk: -DSPEC\_CPU\_LP64 -DSPEC\_CPU\_LINUX



# SPEC CINT2006 Result

Copyright 2006-2016 Standard Performance Evaluation Corporation

Dell Inc.

SPECint2006 = 43.5

PowerEdge R930 (Intel Xeon E7-4809 v4, 2.10 GHz)

SPECint\_base2006 = 41.5

CPU2006 license: 55

Test date: May-2016

Test sponsor: Dell Inc.

Hardware Availability: Jun-2016

Tested by: Dell Inc.

Software Availability: Dec-2015

## Base Optimization Flags

C benchmarks:

-xCORE-AVX2 -ipo -O3 -no-prec-div -parallel -opt-prefetch -auto-p32

C++ benchmarks:

-xCORE-AVX2 -ipo -O3 -no-prec-div -opt-prefetch -auto-p32  
-Wl,-z,muldefs -L/sh -lsmartheap64

## Base Other Flags

C benchmarks:

403.gcc: -Dalloca=\_alloca

## Peak Compiler Invocation

C benchmarks (except as noted below):

icc -m64

400.perlbench: icc -m32 -L/opt/intel/compilers\_and\_libraries\_2016/linux/compiler/lib/ia32\_lin

C++ benchmarks (except as noted below):

icpc -m32 -L/opt/intel/compilers\_and\_libraries\_2016/linux/compiler/lib/ia32\_lin

473.astar: icpc -m64

## Peak Portability Flags

400.perlbench: -D\_FILE\_OFFSET\_BITS=64 -DSPEC\_CPU\_LINUX\_IA32  
401.bzip2: -DSPEC\_CPU\_LP64  
403.gcc: -DSPEC\_CPU\_LP64  
429.mcf: -DSPEC\_CPU\_LP64  
445.gobmk: -DSPEC\_CPU\_LP64  
456.hmmer: -DSPEC\_CPU\_LP64  
458.sjeng: -DSPEC\_CPU\_LP64  
462.libquantum: -DSPEC\_CPU\_LP64 -DSPEC\_CPU\_LINUX  
464.h264ref: -DSPEC\_CPU\_LP64  
471.omnetpp: -D\_FILE\_OFFSET\_BITS=64  
473.astar: -DSPEC\_CPU\_LP64  
483.xalancbmk: -D\_FILE\_OFFSET\_BITS=64 -DSPEC\_CPU\_LINUX



# SPEC CINT2006 Result

Copyright 2006-2016 Standard Performance Evaluation Corporation

Dell Inc.

SPECint2006 = 43.5

PowerEdge R930 (Intel Xeon E7-4809 v4, 2.10 GHz)

SPECint\_base2006 = 41.5

CPU2006 license: 55

Test date: May-2016

Test sponsor: Dell Inc.

Hardware Availability: Jun-2016

Tested by: Dell Inc.

Software Availability: Dec-2015

## Peak Optimization Flags

C benchmarks:

400.perlbench: -xCORE-AVX2(pass 2) -prof-gen:threadsafe(pass 1)  
-ipo(pass 2) -O3(pass 2) -no-prec-div(pass 2)  
-par-num-threads=1(pass 1) -prof-use(pass 2) -opt-prefetch  
-ansi-alias

401.bzip2: -xCORE-AVX2(pass 2) -prof-gen:threadsafe(pass 1)  
-ipo(pass 2) -O3(pass 2) -no-prec-div  
-par-num-threads=1(pass 1) -prof-use(pass 2) -auto-ilp32  
-opt-prefetch -ansi-alias

403.gcc: -xCORE-AVX2 -ipo -O3 -no-prec-div -inline-calloc  
-opt-malloc-options=3 -auto-ilp32

429.mcf: basepeak = yes

445.gobmk: basepeak = yes

456.hmmer: basepeak = yes

458.sjeng: -xCORE-AVX2(pass 2) -prof-gen:threadsafe(pass 1)  
-ipo(pass 2) -O3(pass 2) -no-prec-div(pass 2)  
-par-num-threads=1(pass 1) -prof-use(pass 2) -unroll4

462.libquantum: basepeak = yes

464.h264ref: basepeak = yes

C++ benchmarks:

471.omnetpp: -xCORE-AVX2(pass 2) -prof-gen:threadsafe(pass 1)  
-ipo(pass 2) -O3(pass 2) -no-prec-div(pass 2)  
-par-num-threads=1(pass 1) -prof-use(pass 2)  
-opt-ra-region-strategy=block -ansi-alias  
-Wl,-z,muldefs -L/sh -lsmartheap

473.astar: basepeak = yes

483.xalancbmk: -xCORE-AVX2 -ipo -O3 -no-prec-div -opt-prefetch  
-ansi-alias -Wl,-z,muldefs -L/sh -lsmartheap

## Peak Other Flags

C benchmarks:

403.gcc: -Dalloca=\_alloca



# SPEC CINT2006 Result

Copyright 2006-2016 Standard Performance Evaluation Corporation

Dell Inc.

SPECint2006 = 43.5

PowerEdge R930 (Intel Xeon E7-4809 v4, 2.10 GHz)

SPECint\_base2006 = 41.5

CPU2006 license: 55

Test date: May-2016

Test sponsor: Dell Inc.

Hardware Availability: Jun-2016

Tested by: Dell Inc.

Software Availability: Dec-2015

The flags files that were used to format this result can be browsed at

<http://www.spec.org/cpu2006/flags/Intel-ic16.0-official-linux64.html>

<http://www.spec.org/cpu2006/flags/Dell-Platform-Settings-V1.2-revD.20151006.html>

You can also download the XML flags sources by saving the following links:

<http://www.spec.org/cpu2006/flags/Intel-ic16.0-official-linux64.xml>

<http://www.spec.org/cpu2006/flags/Dell-Platform-Settings-V1.2-revD.20151006.xml>

SPEC and SPECint are registered trademarks of the Standard Performance Evaluation Corporation. All other brand and product names appearing in this result are trademarks or registered trademarks of their respective holders.

For questions about this result, please contact the tester.  
For other inquiries, please contact [webmaster@spec.org](mailto:webmaster@spec.org).

Tested with SPEC CPU2006 v1.2.  
Report generated on Tue Jul 12 11:04:04 2016 by SPEC CPU2006 PS/PDF formatter v6932.  
Originally published on 12 July 2016.