



SPEC® CINT2006 Result

Copyright 2006-2016 Standard Performance Evaluation Corporation

Fujitsu

PRIMERGY RX2560 M2, Intel Xeon E5-2683 v4, 2.10 GHz

SPECint®2006 = **63.1**

SPECint_base2006 = **61.3**

CPU2006 license: 19

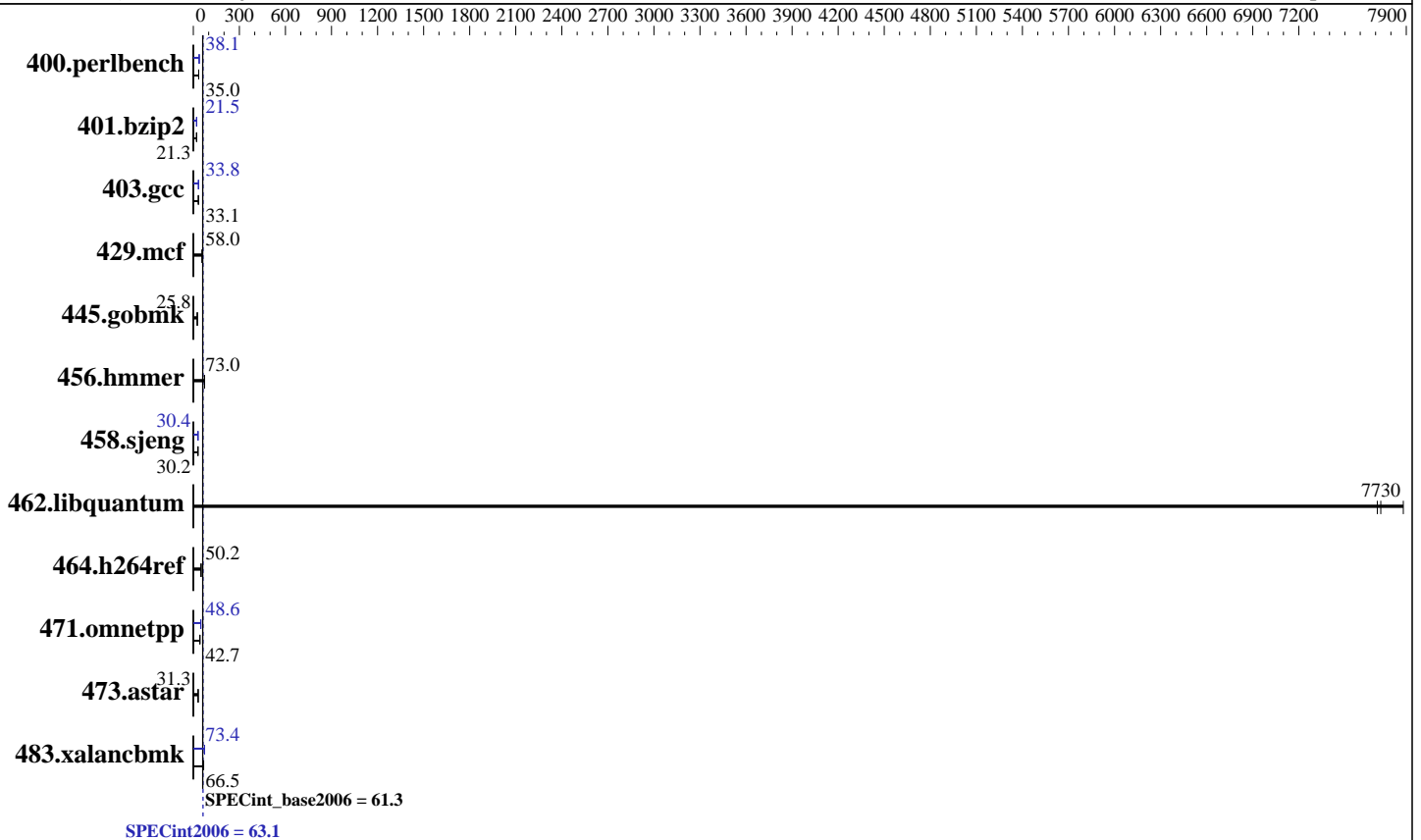
Test sponsor: Fujitsu

Tested by: Fujitsu

Test date: Apr-2016

Hardware Availability: Apr-2016

Software Availability: Sep-2015



Hardware

CPU Name: Intel Xeon E5-2683 v4
 CPU Characteristics: Intel Turbo Boost Technology up to 3.00 GHz
 CPU MHz: 2100
 FPU: Integrated
 CPU(s) enabled: 32 cores, 2 chips, 16 cores/chip, 2 threads/core
 CPU(s) orderable: 1,2 chip
 Primary Cache: 32 KB I + 32 KB D on chip per core
 Secondary Cache: 256 KB I+D on chip per core
 L3 Cache: 40 MB I+D on chip per chip
 Other Cache: None
 Memory: 256 GB (16 x 16 GB 2Rx4 PC4-2400T-R)
 Disk Subsystem: 1 x SATA, 500 GB, 7200 RPM
 Other Hardware: None

Software

Operating System: SUSE Linux Enterprise Server 12 SP1 (x86_64)
 Kernel 3.12.49-11-default
 Compiler: C/C++; Version 16.0.0.101 of Intel C++ Studio XE for Linux
 Auto Parallel: Yes
 File System: xfs
 System State: Run level 5 (multi-user)
 Base Pointers: 32/64-bit
 Peak Pointers: 32/64-bit
 Other Software: Microquill SmartHeap V10.2



SPEC CINT2006 Result

Copyright 2006-2016 Standard Performance Evaluation Corporation

Fujitsu

PRIMERGY RX2560 M2, Intel Xeon E5-2683 v4, 2.10 GHz

SPECint2006 = **63.1**

SPECint_base2006 = **61.3**

CPU2006 license: 19
Test sponsor: Fujitsu
Tested by: Fujitsu

Test date: Apr-2016
Hardware Availability: Apr-2016
Software Availability: Sep-2015

Results Table

Benchmark	Base						Peak					
	Seconds	Ratio	Seconds	Ratio	Seconds	Ratio	Seconds	Ratio	Seconds	Ratio	Seconds	Ratio
400.perlbench	<u>279</u>	<u>35.0</u>	280	34.9	279	35.1	<u>257</u>	<u>38.1</u>	255	38.2	<u>256</u>	<u>38.1</u>
401.bzip2	<u>453</u>	<u>21.3</u>	453	21.3	454	21.3	<u>450</u>	<u>21.5</u>	<u>450</u>	<u>21.5</u>	450	21.4
403.gcc	243	33.1	<u>244</u>	<u>33.1</u>	244	33.0	<u>238</u>	<u>33.8</u>	241	33.4	238	33.8
429.mcf	156	58.5	<u>157</u>	<u>58.0</u>	161	56.8	156	58.5	<u>157</u>	<u>58.0</u>	161	56.8
445.gobmk	406	25.9	<u>406</u>	<u>25.8</u>	406	25.8	406	25.9	<u>406</u>	<u>25.8</u>	406	25.8
456.hammer	<u>128</u>	<u>73.0</u>	128	73.1	128	72.9	<u>128</u>	<u>73.0</u>	128	73.1	128	72.9
458.sjeng	401	30.2	<u>401</u>	<u>30.2</u>	401	30.1	398	30.4	397	30.5	<u>398</u>	<u>30.4</u>
462.libquantum	2.63	7880	2.69	7710	<u>2.68</u>	<u>7730</u>	2.63	7880	2.69	7710	<u>2.68</u>	<u>7730</u>
464.h264ref	442	50.1	<u>441</u>	<u>50.2</u>	440	50.3	442	50.1	<u>441</u>	<u>50.2</u>	440	50.3
471.omnetpp	<u>146</u>	<u>42.7</u>	147	42.4	146	42.8	129	48.5	129	48.6	<u>129</u>	<u>48.6</u>
473.astar	225	31.2	<u>225</u>	<u>31.3</u>	223	31.4	225	31.2	<u>225</u>	<u>31.3</u>	223	31.4
483.xalancbmk	<u>104</u>	<u>66.5</u>	102	67.4	104	66.4	<u>94.0</u>	<u>73.4</u>	93.9	73.5	94.0	73.4

Results appear in the order in which they were run. Bold underlined text indicates a median measurement.

Submit Notes

The config file option 'submit' was used.

Operating System Notes

Stack size set to unlimited using "ulimit -s unlimited"

Platform Notes

```

BIOS configuration:
Energy Performance = Performance
Utilization Profile = Unbalanced
QPI snoop mode: Home Directory Snoop with OSB
  COD Enable = Disabled, Early Snoop = Disabled, Home Snoop Dir OSB = Enabled
CPU ClE Support = Disabled
Sysinfo program /home/SPECcpu2006/config/sysinfo.rev6914
$Rev: 6914 $ $Date:: 2014-06-25 #$ e3fbb8667b5a285932ceab81e28219e1
running on RX2560M2 Mon Apr 25 12:40:45 2016

```

This section contains SUT (System Under Test) info as seen by some common utilities. To remove or add to this section, see: <http://www.spec.org/cpu2006/Docs/config.html#sysinfo>

```

From /proc/cpuinfo
model name : Intel(R) Xeon(R) CPU E5-2683 v4 @ 2.10GHz
 2 "physical id"s (chips)
 64 "processors"
cores, siblings (Caution: counting these is hw and system dependent. The
Continued on next page

```



SPEC CINT2006 Result

Copyright 2006-2016 Standard Performance Evaluation Corporation

Fujitsu

PRIMERGY RX2560 M2, Intel Xeon E5-2683 v4, 2.10 GHz

SPECint2006 = 63.1

SPECint_base2006 = 61.3

CPU2006 license: 19
Test sponsor: Fujitsu
Tested by: Fujitsu

Test date: Apr-2016
Hardware Availability: Apr-2016
Software Availability: Sep-2015

Platform Notes (Continued)

following excerpts from /proc/cpuinfo might not be reliable. Use with caution.)

```
cpu cores : 16
siblings  : 32
physical 0: cores 0 1 2 3 4 5 6 7 8 9 10 11 12 13 14 15
physical 1: cores 0 1 2 3 4 5 6 7 8 9 10 11 12 13 14 15
cache size : 40960 KB
```

```
From /proc/meminfo
MemTotal:      264314460 kB
HugePages_Total:      0
Hugepagesize:    2048 kB
```

```
/usr/bin/lsb_release -d
SUSE Linux Enterprise Server 12 SP1
```

```
From /etc/*release* /etc/*version*
SuSE-release:
SUSE Linux Enterprise Server 12 (x86_64)
VERSION = 12
PATCHLEVEL = 1
# This file is deprecated and will be removed in a future service pack or
release.
# Please check /etc/os-release for details about this release.
os-release:
NAME="SLES"
VERSION="12-SP1"
VERSION_ID="12.1"
PRETTY_NAME="SUSE Linux Enterprise Server 12 SP1"
ID="sles"
ANSI_COLOR="0;32"
CPE_NAME="cpe:/o:suse:sles:12:sp1"
```

```
uname -a:
Linux RX2560M2 3.12.49-11-default #1 SMP Wed Nov 11 20:52:43 UTC 2015
(8d714a0) x86_64 x86_64 x86_64 GNU/Linux
```

```
run-level 5 Apr 25 12:28
```

```
SPEC is set to: /home/SPECcpu2006
Filesystem      Type  Size  Used Avail Use% Mounted on
/dev/sda3       xfs   1.8T   50G  1.8T   3% /home
Additional information from dmidecode:
```

Warning: Use caution when you interpret this section. The 'dmidecode' program reads system data which is "intended to allow hardware to be accurately determined", but the intent may not be met, as there are frequent changes to hardware, firmware, and the "DMTF SMBIOS" standard.

```
BIOS FUJITSU // American Megatrends Inc. V5.0.0.11 R1.6.0 for D3289-B1x
03/11/2016
Memory:
```

Continued on next page



SPEC CINT2006 Result

Copyright 2006-2016 Standard Performance Evaluation Corporation

Fujitsu

PRIMERGY RX2560 M2, Intel Xeon E5-2683 v4, 2.10 GHz

SPECint2006 = 63.1

SPECint_base2006 = 61.3

CPU2006 license: 19
Test sponsor: Fujitsu
Tested by: Fujitsu

Test date: Apr-2016
Hardware Availability: Apr-2016
Software Availability: Sep-2015

Platform Notes (Continued)

16x Hynix Semiconductor HMA42GR7AFR4N-UH 16 GB 2 rank 2400 MHz
8x NO DIMM NO DIMM

(End of data from sysinfo program)

General Notes

Environment variables set by runspec before the start of the run:

KMP_AFFINITY = "granularity=fine,scatter"
LD_LIBRARY_PATH = "/home/SPECcpu2006/libs/32:/home/SPECcpu2006/libs/64:/home/SPECcpu2006/sh"
OMP_NUM_THREADS = "32"

Binaries compiled on a system with 1x Intel Core i5-4670K CPU + 32GB memory using RedHat EL 7.1

Transparent Huge Pages enabled with:

echo always > /sys/kernel/mm/transparent_hugepage/enabled

For information about Fujitsu please visit: <http://www.fujitsu.com>

Base Compiler Invocation

C benchmarks:
icc -m64

C++ benchmarks:
icpc -m64

Base Portability Flags

400.perlbench: -DSPEC_CPU_LP64 -DSPEC_CPU_LINUX_X64
401.bzip2: -DSPEC_CPU_LP64
403.gcc: -DSPEC_CPU_LP64
429.mcf: -DSPEC_CPU_LP64
445.gobmk: -DSPEC_CPU_LP64
456.hmmmer: -DSPEC_CPU_LP64
458.sjeng: -DSPEC_CPU_LP64
462.libquantum: -DSPEC_CPU_LP64 -DSPEC_CPU_LINUX
464.h264ref: -DSPEC_CPU_LP64
471.omnetpp: -DSPEC_CPU_LP64
473.astar: -DSPEC_CPU_LP64
483.xalancbmk: -DSPEC_CPU_LP64 -DSPEC_CPU_LINUX

Base Optimization Flags

C benchmarks:
-xCORE-AVX2 -ipo -O3 -no-prec-div -parallel -opt-prefetch -auto-p32

Continued on next page



SPEC CINT2006 Result

Copyright 2006-2016 Standard Performance Evaluation Corporation

Fujitsu

PRIMERGY RX2560 M2, Intel Xeon E5-2683 v4, 2.10 GHz

SPECint2006 = 63.1

SPECint_base2006 = 61.3

CPU2006 license: 19
Test sponsor: Fujitsu
Tested by: Fujitsu

Test date: Apr-2016
Hardware Availability: Apr-2016
Software Availability: Sep-2015

Base Optimization Flags (Continued)

C++ benchmarks:

-xCORE-AVX2 -ipo -O3 -no-prec-div -opt-prefetch -auto-p32
-Wl,-z,muldefs -L/sh -lsmartheap64

Base Other Flags

C benchmarks:

403.gcc: -Dalloca=_alloca

Peak Compiler Invocation

C benchmarks (except as noted below):

icc -m64

400.perlbench: icc -m32 -L/opt/intel/compilers_and_libraries_2016/linux/compiler/lib/ia32_lin

C++ benchmarks (except as noted below):

icpc -m32 -L/opt/intel/compilers_and_libraries_2016/linux/compiler/lib/ia32_lin

473.astar: icpc -m64

Peak Portability Flags

400.perlbench: -D_FILE_OFFSET_BITS=64 -DSPEC_CPU_LINUX_IA32
401.bzip2: -DSPEC_CPU_LP64
403.gcc: -DSPEC_CPU_LP64
429.mcf: -DSPEC_CPU_LP64
445.gobmk: -DSPEC_CPU_LP64
456.hmmmer: -DSPEC_CPU_LP64
458.sjeng: -DSPEC_CPU_LP64
462.libquantum: -DSPEC_CPU_LP64 -DSPEC_CPU_LINUX
464.h264ref: -DSPEC_CPU_LP64
471.omnetpp: -D_FILE_OFFSET_BITS=64
473.astar: -DSPEC_CPU_LP64
483.xalancbmk: -D_FILE_OFFSET_BITS=64 -DSPEC_CPU_LINUX

Peak Optimization Flags

C benchmarks:

Continued on next page



SPEC CINT2006 Result

Copyright 2006-2016 Standard Performance Evaluation Corporation

Fujitsu

PRIMERGY RX2560 M2, Intel Xeon E5-2683 v4, 2.10 GHz

SPECint2006 = 63.1

SPECint_base2006 = 61.3

CPU2006 license: 19
Test sponsor: Fujitsu
Tested by: Fujitsu

Test date: Apr-2016
Hardware Availability: Apr-2016
Software Availability: Sep-2015

Peak Optimization Flags (Continued)

400.perlbench: -xCORE-AVX2(pass 2) -prof-gen:threadsafe(pass 1)
-ipo(pass 2) -O3(pass 2) -no-prec-div(pass 2)
-par-num-threads=1(pass 1) -prof-use(pass 2) -opt-prefetch
-ansi-alias

401.bzip2: -xCORE-AVX2(pass 2) -prof-gen:threadsafe(pass 1)
-ipo(pass 2) -O3(pass 2) -no-prec-div
-par-num-threads=1(pass 1) -prof-use(pass 2) -auto-ilp32
-opt-prefetch -ansi-alias

403.gcc: -xCORE-AVX2 -ipo -O3 -no-prec-div -inline-calloc
-opt-malloc-options=3 -auto-ilp32

429.mcf: basepeak = yes

445.gobmk: basepeak = yes

456.hmmmer: basepeak = yes

458.sjeng: -xCORE-AVX2(pass 2) -prof-gen:threadsafe(pass 1)
-ipo(pass 2) -O3(pass 2) -no-prec-div(pass 2)
-par-num-threads=1(pass 1) -prof-use(pass 2) -unroll4

462.libquantum: basepeak = yes

464.h264ref: basepeak = yes

C++ benchmarks:

471.omnetpp: -xCORE-AVX2(pass 2) -prof-gen:threadsafe(pass 1)
-ipo(pass 2) -O3(pass 2) -no-prec-div(pass 2)
-par-num-threads=1(pass 1) -prof-use(pass 2)
-opt-ra-region-strategy=block -ansi-alias
-Wl,-z,muldefs -L/sh -lsmartheap

473.astar: basepeak = yes

483.xalancbmk: -xCORE-AVX2 -ipo -O3 -no-prec-div -opt-prefetch
-ansi-alias -Wl,-z,muldefs -L/sh -lsmartheap

Peak Other Flags

C benchmarks:

403.gcc: -Dalloca=_alloca



SPEC CINT2006 Result

Copyright 2006-2016 Standard Performance Evaluation Corporation

Fujitsu

PRIMERGY RX2560 M2, Intel Xeon E5-2683 v4, 2.10 GHz

SPECint2006 = 63.1

SPECint_base2006 = 61.3

CPU2006 license: 19

Test sponsor: Fujitsu

Tested by: Fujitsu

Test date: Apr-2016

Hardware Availability: Apr-2016

Software Availability: Sep-2015

The flags files that were used to format this result can be browsed at

<http://www.spec.org/cpu2006/flags/Intel-ic16.0-official-linux64.html>

<http://www.spec.org/cpu2006/flags/Fujitsu-Platform-Settings-V1.2-HSW-RevA.html>

You can also download the XML flags sources by saving the following links:

<http://www.spec.org/cpu2006/flags/Intel-ic16.0-official-linux64.xml>

<http://www.spec.org/cpu2006/flags/Fujitsu-Platform-Settings-V1.2-HSW-RevA.xml>

SPEC and SPECint are registered trademarks of the Standard Performance Evaluation Corporation. All other brand and product names appearing in this result are trademarks or registered trademarks of their respective holders.

For questions about this result, please contact the tester.
For other inquiries, please contact webmaster@spec.org.

Tested with SPEC CPU2006 v1.2.
Report generated on Wed Jun 1 19:10:06 2016 by SPEC CPU2006 PS/PDF formatter v6932.
Originally published on 1 June 2016.