



SPEC® CINT2006 Result

Copyright 2006-2016 Standard Performance Evaluation Corporation

Hewlett Packard Enterprise

(Test Sponsor: HPE)

ProLiant BL460c Gen9
(2.10 GHz, Intel Xeon E5-2683 v4)

SPECint®2006 = 63.0

SPECint_base2006 = 60.7

CPU2006 license: 3

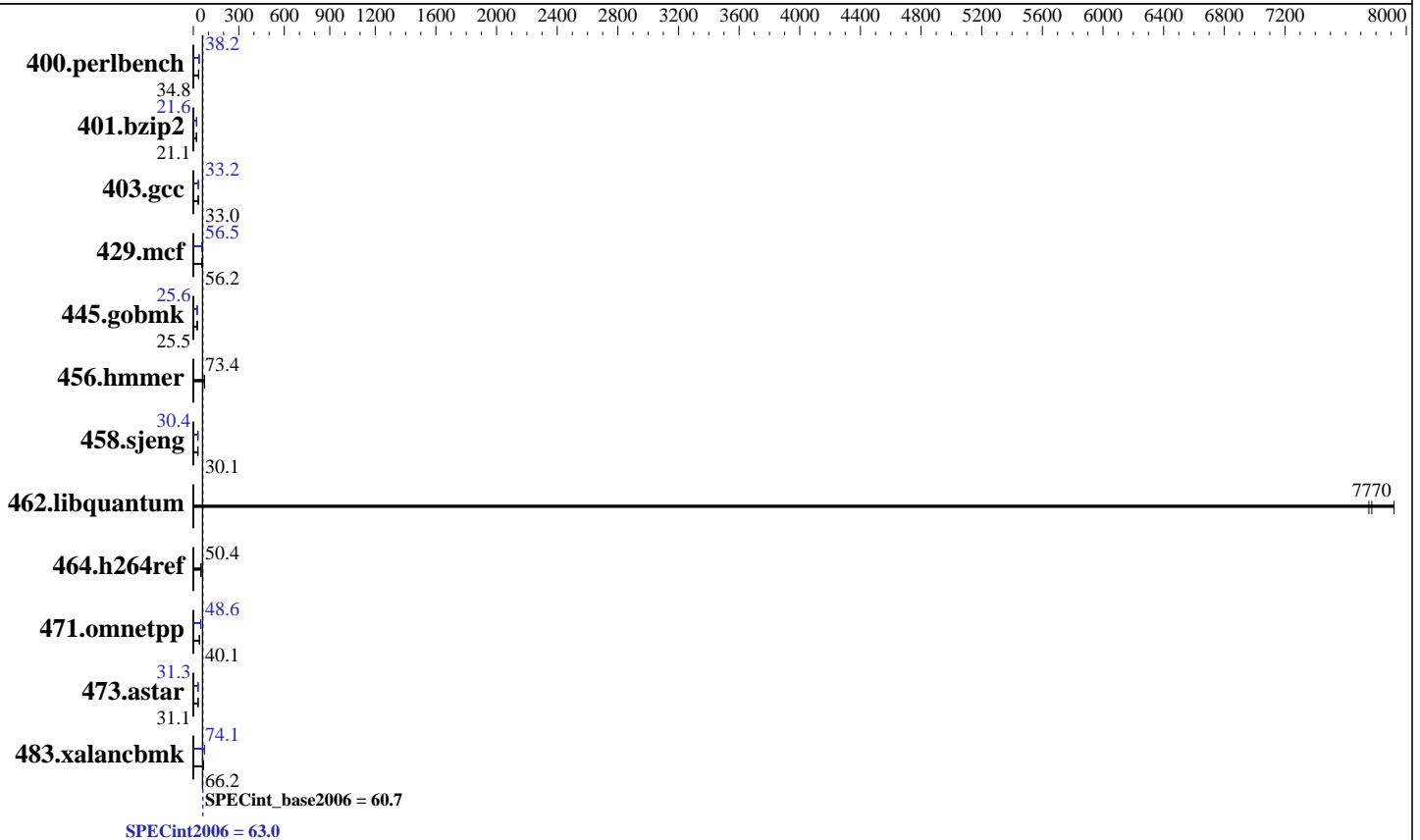
Test sponsor: HPE

Tested by: HPE

Test date: Mar-2016

Hardware Availability: Mar-2016

Software Availability: Nov-2015



Hardware

CPU Name: Intel Xeon E5-2683 v4
 CPU Characteristics: Intel Turbo Boost Technology up to 3.00 GHz
 CPU MHz: 2100
 FPU: Integrated
 CPU(s) enabled: 32 cores, 2 chips, 16 cores/chip
 CPU(s) orderable: 1,2 chip
 Primary Cache: 32 KB I + 32 KB D on chip per core
 Secondary Cache: 256 KB I+D on chip per core
 L3 Cache: 40 MB I+D on chip per chip
 Other Cache: None
 Memory: 256 GB (8 x 32 GB 2Rx4 PC4-2400T-R)
 Disk Subsystem: 1 x 400 GB SAS SSD, RAID 0
 Other Hardware: None

Software

Operating System: Red Hat Enterprise Linux Server release 7.2 (Maipo)
 Kernel 3.10.0-327.el7.x86_64
 Compiler: C/C++: Version 16.0.0.101 of Intel C++ Studio XE for Linux
 Auto Parallel: Yes
 File System: xfs
 System State: Run level 3 (multi-user)
 Base Pointers: 32/64-bit
 Peak Pointers: 32/64-bit
 Other Software: Microquill SmartHeap V10.2



SPEC CINT2006 Result

Copyright 2006-2016 Standard Performance Evaluation Corporation

Hewlett Packard Enterprise

(Test Sponsor: HPE)

ProLiant BL460c Gen9

(2.10 GHz, Intel Xeon E5-2683 v4)

SPECint2006 =

63.0

SPECint_base2006 =

60.7

CPU2006 license: 3

Test sponsor: HPE

Tested by: HPE

Test date: Mar-2016

Hardware Availability: Mar-2016

Software Availability: Nov-2015

Results Table

Benchmark	Base						Peak					
	Seconds	Ratio	Seconds	Ratio	Seconds	Ratio	Seconds	Ratio	Seconds	Ratio	Seconds	Ratio
400.perlbench	281	34.8	280	34.9	<u>281</u>	<u>34.8</u>	256	38.2	256	38.2	<u>256</u>	<u>38.2</u>
401.bzip2	<u>456</u>	<u>21.1</u>	457	21.1	455	21.2	447	21.6	448	21.5	<u>447</u>	<u>21.6</u>
403.gcc	244	33.1	<u>244</u>	<u>33.0</u>	244	33.0	243	33.2	<u>243</u>	<u>33.2</u>	243	33.1
429.mcf	162	56.3	<u>162</u>	<u>56.2</u>	164	55.5	<u>161</u>	<u>56.5</u>	164	55.7	161	56.7
445.gobmk	412	25.5	<u>412</u>	<u>25.5</u>	412	25.5	<u>410</u>	<u>25.6</u>	410	25.6	410	25.6
456.hammer	127	73.4	<u>127</u>	<u>73.4</u>	127	73.6	127	73.4	<u>127</u>	<u>73.4</u>	127	73.6
458.sjeng	<u>403</u>	<u>30.1</u>	403	30.0	402	30.1	398	30.4	<u>398</u>	<u>30.4</u>	398	30.4
462.libquantum	2.67	7750	<u>2.67</u>	<u>7770</u>	2.62	7920	2.67	7750	<u>2.67</u>	<u>7770</u>	2.62	7920
464.h264ref	<u>439</u>	<u>50.4</u>	439	50.5	439	50.4	<u>439</u>	<u>50.4</u>	439	50.5	439	50.4
471.omnetpp	156	40.1	<u>156</u>	<u>40.1</u>	153	40.9	127	49.4	129	48.5	<u>129</u>	<u>48.6</u>
473.astar	225	31.3	<u>226</u>	<u>31.1</u>	227	31.0	224	31.3	<u>224</u>	<u>31.3</u>	226	31.1
483.xalancbmk	104	66.4	104	66.0	<u>104</u>	<u>66.2</u>	93.4	73.9	92.9	74.3	<u>93.1</u>	<u>74.1</u>

Results appear in the order in which they were run. Bold underlined text indicates a median measurement.

Submit Notes

The config file option 'submit' was used.

Operating System Notes

Stack size set to unlimited using "ulimit -s unlimited"
Transparent Huge Pages enabled with:
echo always > /sys/kernel/mm/transparent_hugepage/enabled

Platform Notes

BIOS Configuration:
Intel Hyperthreading Option set to Disabled
Power Profile set to Custom
Power Regulator set to Static High Performance Mode
Minimum Processor Idle Power Core C-State set to C1E State
Minimum Processor Idle Power Package C-State set to No Package State
Collaborative Power Control set to Disabled
QPI Snoop Configuration set to Home Snoop
Thermal Configuration set to Maximum Cooling
Processor Power and Utilization Monitoring set to Disabled
Memory Refresh Rate set to 1x Refresh
Sysinfo program /home/cpu2006/config/sysinfo.rev6914
\$Rev: 6914 \$ \$Date:: 2014-06-25 #\$ e3fbb8667b5a285932ceab81e28219e1
running on BL460c-Gen9-B Fri Apr 15 12:16:30 2016

This section contains SUT (System Under Test) info as seen by some common utilities. To remove or add to this section, see:

Continued on next page



SPEC CINT2006 Result

Copyright 2006-2016 Standard Performance Evaluation Corporation

Hewlett Packard Enterprise

(Test Sponsor: HPE)

ProLiant BL460c Gen9
(2.10 GHz, Intel Xeon E5-2683 v4)

SPECint2006 = 63.0

SPECint_base2006 = 60.7

CPU2006 license: 3

Test sponsor: HPE

Tested by: HPE

Test date: Mar-2016

Hardware Availability: Mar-2016

Software Availability: Nov-2015

Platform Notes (Continued)

<http://www.spec.org/cpu2006/Docs/config.html#sysinfo>

From /proc/cpuinfo

```

model name      : Intel(R) Xeon(R) CPU E5-2683 v4 @ 2.10GHz
 2 "physical id"s (chips)
 32 "processors"
cores, siblings (Caution: counting these is hw and system dependent. The
following excerpts from /proc/cpuinfo might not be reliable. Use with
caution.)
  cpu cores     : 16
  siblings      : 16
  physical 0:   cores 0 1 2 3 4 5 6 7 8 9 10 11 12 13 14 15
  physical 1:   cores 0 1 2 3 4 5 6 7 8 9 10 11 12 13 14 15
cache size     : 40960 KB

```

From /proc/meminfo

```

MemTotal:      263841524 kB
HugePages_Total: 0
Hugepagesize:  2048 kB

```

From /etc/*release* /etc/*version*

```

os-release:
NAME="Red Hat Enterprise Linux Server"
VERSION="7.2 (Maipo)"
ID="rhel"
ID_LIKE="fedora"
VERSION_ID="7.2"
PRETTY_NAME="Red Hat Enterprise Linux Server 7.2 (Maipo)"
ANSI_COLOR="0;31"
CPE_NAME="cpe:/o:redhat:enterprise_linux:7.2:GA:server"
redhat-release: Red Hat Enterprise Linux Server release 7.2 (Maipo)
system-release: Red Hat Enterprise Linux Server release 7.2 (Maipo)
system-release-cpe: cpe:/o:redhat:enterprise_linux:7.2:ga:server

```

uname -a:

```

Linux BL460c-Gen9-B 3.10.0-327.el7.x86_64 #1 SMP Thu Oct 29 17:29:29 EDT 2015
x86_64 x86_64 x86_64 GNU/Linux

```

run-level 3 Apr 15 11:54

SPEC is set to: /home/cpu2006

```

Filesystem      Type  Size  Used Avail Use% Mounted on
/dev/sda5       xfs   314G  263G   52G  84% /home

```

Additional information from dmidecode:

Warning: Use caution when you interpret this section. The 'dmidecode' program reads system data which is "intended to allow hardware to be accurately determined", but the intent may not be met, as there are frequent changes to hardware, firmware, and the "DMTF SMBIOS" standard.

BIOS HP I36 02/22/2016

Memory:

Continued on next page



SPEC CINT2006 Result

Copyright 2006-2016 Standard Performance Evaluation Corporation

Hewlett Packard Enterprise

(Test Sponsor: HPE)

ProLiant BL460c Gen9
(2.10 GHz, Intel Xeon E5-2683 v4)

SPECint2006 = 63.0

SPECint_base2006 = 60.7

CPU2006 license: 3

Test sponsor: HPE

Tested by: HPE

Test date: Mar-2016

Hardware Availability: Mar-2016

Software Availability: Nov-2015

Platform Notes (Continued)

8x UNKNOWN NOT AVAILABLE
8x UNKNOWN NOT AVAILABLE 32 GB 2 rank 2400 MHz

(End of data from sysinfo program)

Regarding the sysinfo display about the memory installed, the correct amount of memory is 256 GB and the dmidecode description should have one line reading as:
8x UNKNOWN NOT AVAILABLE 32 GB 2 rank 2400 MHz

General Notes

Environment variables set by runspec before the start of the run:

KMP_AFFINITY = "granularity=fine,scatter"

LD_LIBRARY_PATH = "/home/cpu2006/libs/32:/home/cpu2006/libs/64:/home/cpu2006/sh"

OMP_NUM_THREADS = "32"

Binaries compiled on a system with 1x Intel Core i5-4670K CPU + 32GB memory using RedHat EL 7.1

Base Compiler Invocation

C benchmarks:

icc -m64

C++ benchmarks:

icpc -m64

Base Portability Flags

400.perlbench: -DSPEC_CPU_LP64 -DSPEC_CPU_LINUX_X64
401.bzip2: -DSPEC_CPU_LP64
403.gcc: -DSPEC_CPU_LP64
429.mcf: -DSPEC_CPU_LP64
445.gobmk: -DSPEC_CPU_LP64
456.hmmmer: -DSPEC_CPU_LP64
458.sjeng: -DSPEC_CPU_LP64
462.libquantum: -DSPEC_CPU_LP64 -DSPEC_CPU_LINUX
464.h264ref: -DSPEC_CPU_LP64
471.omnetpp: -DSPEC_CPU_LP64
473.astar: -DSPEC_CPU_LP64
483.xalancbmk: -DSPEC_CPU_LP64 -DSPEC_CPU_LINUX

Base Optimization Flags

C benchmarks:

-xCORE-AVX2 -ipo -O3 -no-prec-div -parallel -opt-prefetch -auto-p32

Continued on next page



SPEC CINT2006 Result

Copyright 2006-2016 Standard Performance Evaluation Corporation

Hewlett Packard Enterprise

(Test Sponsor: HPE)

ProLiant BL460c Gen9

(2.10 GHz, Intel Xeon E5-2683 v4)

SPECint2006 =

63.0

SPECint_base2006 =

60.7

CPU2006 license: 3

Test sponsor: HPE

Tested by: HPE

Test date: Mar-2016

Hardware Availability: Mar-2016

Software Availability: Nov-2015

Base Optimization Flags (Continued)

C++ benchmarks:

-xCORE-AVX2 -ipo -O3 -no-prec-div -opt-prefetch -auto-p32
-Wl,-z,muldefs -L/sh -lsmartheap64

Base Other Flags

C benchmarks:

403.gcc: -Dalloca=_alloca

Peak Compiler Invocation

C benchmarks (except as noted below):

icc -m64

400.perlbench: icc -m32 -L/opt/intel/compilers_and_libraries_2016/linux/compiler/lib/ia32_lin

445.gobmk: icc -m32 -L/opt/intel/compilers_and_libraries_2016/linux/compiler/lib/ia32_lin

C++ benchmarks (except as noted below):

icpc -m32 -L/opt/intel/compilers_and_libraries_2016/linux/compiler/lib/ia32_lin

473.astar: icpc -m64

Peak Portability Flags

400.perlbench: -D_FILE_OFFSET_BITS=64 -DSPEC_CPU_LINUX_IA32

401.bzip2: -DSPEC_CPU_LP64

403.gcc: -DSPEC_CPU_LP64

429.mcf: -DSPEC_CPU_LP64

445.gobmk: -D_FILE_OFFSET_BITS=64

456.hmmer: -DSPEC_CPU_LP64

458.sjeng: -DSPEC_CPU_LP64

462.libquantum: -DSPEC_CPU_LP64 -DSPEC_CPU_LINUX

464.h264ref: -DSPEC_CPU_LP64

471.omnetpp: -D_FILE_OFFSET_BITS=64

473.astar: -DSPEC_CPU_LP64

483.xalancbmk: -D_FILE_OFFSET_BITS=64 -DSPEC_CPU_LINUX



SPEC CINT2006 Result

Copyright 2006-2016 Standard Performance Evaluation Corporation

Hewlett Packard Enterprise

(Test Sponsor: HPE)

ProLiant BL460c Gen9

(2.10 GHz, Intel Xeon E5-2683 v4)

SPECint2006 =

63.0

SPECint_base2006 =

60.7

CPU2006 license: 3

Test sponsor: HPE

Tested by: HPE

Test date: Mar-2016

Hardware Availability: Mar-2016

Software Availability: Nov-2015

Peak Optimization Flags

C benchmarks:

400.perlbench: -xCORE-AVX2(pass 2) -prof-gen:threadsafe(pass 1)
-ipo(pass 2) -O3(pass 2) -no-prec-div(pass 2)
-par-num-threads=1(pass 1) -prof-use(pass 2) -opt-prefetch
-ansi-alias

401.bzip2: -xCORE-AVX2(pass 2) -prof-gen:threadsafe(pass 1)
-ipo(pass 2) -O3(pass 2) -no-prec-div
-par-num-threads=1(pass 1) -prof-use(pass 2) -auto-ilp32
-opt-prefetch -ansi-alias

403.gcc: -xCORE-AVX2 -ipo -O3 -no-prec-div -inline-calloc
-opt-malloc-options=3 -auto-ilp32

429.mcf: -xCORE-AVX2 -ipo -O3 -no-prec-div -parallel
-opt-prefetch -auto-p32

445.gobmk: -xCORE-AVX2(pass 2) -prof-gen:threadsafe(pass 1)
-prof-use(pass 2) -par-num-threads=1(pass 1) -ansi-alias

456.hmmer: basepeak = yes

458.sjeng: -xCORE-AVX2(pass 2) -prof-gen:threadsafe(pass 1)
-ipo(pass 2) -O3(pass 2) -no-prec-div(pass 2)
-par-num-threads=1(pass 1) -prof-use(pass 2) -unroll4

462.libquantum: basepeak = yes

464.h264ref: basepeak = yes

C++ benchmarks:

471.omnetpp: -xCORE-AVX2(pass 2) -prof-gen:threadsafe(pass 1)
-ipo(pass 2) -O3(pass 2) -no-prec-div(pass 2)
-par-num-threads=1(pass 1) -prof-use(pass 2)
-opt-ra-region-strategy=block -ansi-alias
-Wl,-z,muldefs -L/sh -lsmartheap

473.astar: -xCORE-AVX2 -ipo -O3 -no-prec-div -opt-prefetch
-auto-p32 -Wl,-z,muldefs -L/sh -lsmartheap64

483.xalancbmk: -xCORE-AVX2 -ipo -O3 -no-prec-div -opt-prefetch
-ansi-alias -Wl,-z,muldefs -L/sh -lsmartheap



SPEC CINT2006 Result

Copyright 2006-2016 Standard Performance Evaluation Corporation

Hewlett Packard Enterprise

(Test Sponsor: HPE)

ProLiant BL460c Gen9
(2.10 GHz, Intel Xeon E5-2683 v4)

SPECint2006 = 63.0

SPECint_base2006 = 60.7

CPU2006 license: 3

Test sponsor: HPE

Tested by: HPE

Test date: Mar-2016

Hardware Availability: Mar-2016

Software Availability: Nov-2015

Peak Other Flags

C benchmarks:

403.gcc: -Dalloca=_alloca

The flags files that were used to format this result can be browsed at

<http://www.spec.org/cpu2006/flags/Intel-ic16.0-official-linux64.html>

<http://www.spec.org/cpu2006/flags/HP-Platform-Flags-Intel-V1.2-HSW-revE.html>

You can also download the XML flags sources by saving the following links:

<http://www.spec.org/cpu2006/flags/Intel-ic16.0-official-linux64.xml>

<http://www.spec.org/cpu2006/flags/HP-Platform-Flags-Intel-V1.2-HSW-revE.xml>

SPEC and SPECint are registered trademarks of the Standard Performance Evaluation Corporation. All other brand and product names appearing in this result are trademarks or registered trademarks of their respective holders.

For questions about this result, please contact the tester.
For other inquiries, please contact webmaster@spec.org.

Tested with SPEC CPU2006 v1.2.
Report generated on Tue May 17 16:51:10 2016 by SPEC CPU2006 PS/PDF formatter v6932.
Originally published on 17 May 2016.