



# SPEC® CINT2006 Result

Copyright 2006-2016 Standard Performance Evaluation Corporation

## Huawei

**SPECint®2006 = 60.2**

Huawei RH2288H V3 (Intel Xeon E5-2670 v3)

**SPECint\_base2006 = 57.9**

CPU2006 license: 3175

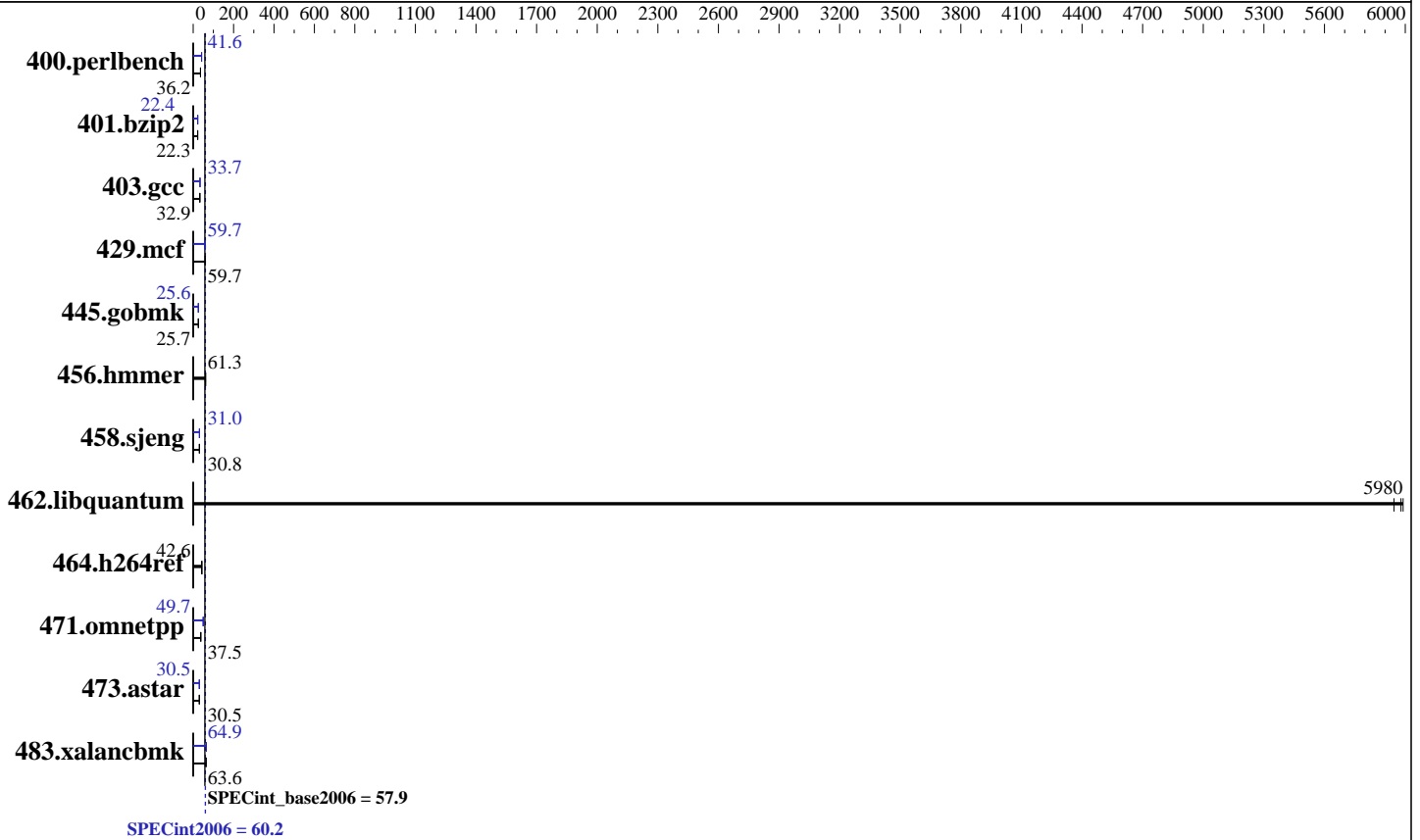
Test sponsor: Huawei

Tested by: Huawei

Test date: Jan-2016

Hardware Availability: Sep-2014

Software Availability: Sep-2014



### Hardware

CPU Name: Intel Xeon E5-2670 v3  
 CPU Characteristics: Intel Turbo Boost Technology up to 3.10 GHz  
 CPU MHz: 2300  
 FPU: Integrated  
 CPU(s) enabled: 24 cores, 2 chips, 12 cores/chip  
 CPU(s) orderable: 1,2 chip  
 Primary Cache: 32 KB I + 32 KB D on chip per core  
 Secondary Cache: 256 KB I+D on chip per core  
 L3 Cache: 30 MB I+D on chip per chip  
 Other Cache: None  
 Memory: 256 GB (16 x 16 GB 2Rx4 PC4-2133P-R)  
 Disk Subsystem: 1 x 300 GB SATA SSD  
 Other Hardware: None

### Software

Operating System: Red Hat Enterprise Linux Server release 7.0 (Maipo)  
 3.10.0-123.el7.x86\_64  
 Compiler: C/C++: Version 15.0.0.090 of Intel C++ Studio XE for Linux  
 Auto Parallel: Yes  
 File System: ext4  
 System State: Run level 3 (multi-user)  
 Base Pointers: 32/64-bit  
 Peak Pointers: 32/64-bit  
 Other Software: Microquill SmartHeap V10.0



# SPEC CINT2006 Result

Copyright 2006-2016 Standard Performance Evaluation Corporation

## Huawei

SPECint2006 = **60.2**

Huawei RH2288H V3 (Intel Xeon E5-2670 v3)

SPECint\_base2006 = **57.9**

CPU2006 license: 3175  
Test sponsor: Huawei  
Tested by: Huawei

Test date: Jan-2016  
Hardware Availability: Sep-2014  
Software Availability: Sep-2014

## Results Table

Benchmark	Base						Peak					
	Seconds	Ratio	Seconds	Ratio	Seconds	Ratio	Seconds	Ratio	Seconds	Ratio	Seconds	Ratio
400.perlbench	<b>270</b>	<b>36.2</b>	269	36.3	270	36.1	234	41.7	235	41.6	<b>235</b>	<b>41.6</b>
401.bzip2	<b>433</b>	<b>22.3</b>	433	22.3	435	22.2	431	22.4	<b>430</b>	<b>22.4</b>	430	22.4
403.gcc	245	32.9	<b>245</b>	<b>32.9</b>	245	32.8	<b>239</b>	<b>33.7</b>	239	33.7	239	33.7
429.mcf	153	59.7	<b>153</b>	<b>59.7</b>	152	60.0	153	59.7	<b>153</b>	<b>59.7</b>	155	58.9
445.gobmk	408	25.7	<b>408</b>	<b>25.7</b>	409	25.6	409	25.6	409	25.6	<b>409</b>	<b>25.6</b>
456.hammer	152	61.4	<b>152</b>	<b>61.3</b>	152	61.3	152	61.4	<b>152</b>	<b>61.3</b>	152	61.3
458.sjeng	<b>393</b>	<b>30.8</b>	393	30.8	392	30.8	<b>391</b>	<b>31.0</b>	391	31.0	390	31.0
462.libquantum	3.46	5990	<b>3.47</b>	<b>5980</b>	3.49	5940	3.46	5990	<b>3.47</b>	<b>5980</b>	3.49	5940
464.h264ref	<b>520</b>	<b>42.6</b>	518	42.7	521	42.5	<b>520</b>	<b>42.6</b>	518	42.7	521	42.5
471.omnetpp	166	37.8	168	37.3	<b>167</b>	<b>37.5</b>	125	49.8	126	49.6	<b>126</b>	<b>49.7</b>
473.astar	230	30.5	<b>230</b>	<b>30.5</b>	231	30.4	<b>230</b>	<b>30.5</b>	230	30.5	230	30.5
483.xalancbmk	<b>108</b>	<b>63.6</b>	109	63.4	108	63.6	106	64.9	106	64.9	<b>106</b>	<b>64.9</b>

Results appear in the order in which they were run. Bold underlined text indicates a median measurement.

## Submit Notes

The config file option 'submit' was used.

## Operating System Notes

Stack size set to unlimited using "ulimit -s unlimited"

## Platform Notes

BIOS configuration:  
Set Power Efficiency Mode to Performance  
Set Snoop Mode to ES  
Set Hyper-Threading to Disabled  
Baseboard Management Controller used to adjust the fan speed to 100%  
Sysinfo program /spec/config/sysinfo.rev6914  
\$Rev: 6914 \$ \$Date:: 2014-06-25 #\$ e3fbb8667b5a285932ceab81e28219e1  
running on localhost.localdomain Thu Jan 28 23:54:09 2016

This section contains SUT (System Under Test) info as seen by some common utilities. To remove or add to this section, see: <http://www.spec.org/cpu2006/Docs/config.html#sysinfo>

From /proc/cpuinfo  
model name : Intel(R) Xeon(R) CPU E5-2670 v3 @ 2.30GHz  
2 "physical id"s (chips)  
24 "processors"  
cores, siblings (Caution: counting these is hw and system dependent. The following excerpts from /proc/cpuinfo might not be reliable. Use with  
Continued on next page



# SPEC CINT2006 Result

Copyright 2006-2016 Standard Performance Evaluation Corporation

Huawei

SPECint2006 = 60.2

Huawei RH2288H V3 (Intel Xeon E5-2670 v3)

SPECint\_base2006 = 57.9

CPU2006 license: 3175

Test sponsor: Huawei

Tested by: Huawei

Test date: Jan-2016

Hardware Availability: Sep-2014

Software Availability: Sep-2014

## Platform Notes (Continued)

```

caution.)
  cpu cores : 12
  siblings  : 12
  physical 0: cores 0 1 2 3 4 5 8 9 10 11 12 13
  physical 1: cores 0 1 2 3 4 5 8 9 10 11 12 13
  cache size : 30720 KB

```

```

From /proc/meminfo
MemTotal:      263578444 kB
HugePages_Total:    0
Hugepagesize:    2048 kB

```

```

From /etc/*release* /etc/*version*
os-release:
NAME="Red Hat Enterprise Linux Server"
VERSION="7.0 (Maipo)"
ID="rhel"
ID_LIKE="fedora"
VERSION_ID="7.0"
PRETTY_NAME="Red Hat Enterprise Linux Server 7.0 (Maipo)"
ANSI_COLOR="0;31"
CPE_NAME="cpe:/o:redhat:enterprise_linux:7.0:GA:server"
redhat-release: Red Hat Enterprise Linux Server release 7.0 (Maipo)
system-release: Red Hat Enterprise Linux Server release 7.0 (Maipo)
system-release-cpe: cpe:/o:redhat:enterprise_linux:7.0:ga:server

```

```

uname -a:
Linux localhost.localdomain 3.10.0-123.el7.x86_64 #1 SMP Mon May 5 11:16:57
EDT 2014 x86_64 x86_64 x86_64 GNU/Linux

```

run-level 3 Jan 28 23:51

```

SPEC is set to: /spec
Filesystem      Type      Size      Used Avail Use% Mounted on
/dev/sda2       ext4     271G      11G  246G   5% /

```

Additional information from dmidecode:

Warning: Use caution when you interpret this section. The 'dmidecode' program reads system data which is "intended to allow hardware to be accurately determined", but the intent may not be met, as there are frequent changes to hardware, firmware, and the "DMTF SMBIOS" standard.

```

BIOS Insyde Corp. 1.69 10/31/2015
Memory:
8x Micron 36ASF2G72PZ-2G1A2 16 GB 1 rank 2133 MHz
8x Micron 36ASF2G72PZ-2G1A2 16 GB 2 rank 2133 MHz
8x NO DIMM NO DIMM 3 rank

```

(End of data from sysinfo program)



# SPEC CINT2006 Result

Copyright 2006-2016 Standard Performance Evaluation Corporation

Huawei

SPECint2006 = 60.2

Huawei RH2288H V3 (Intel Xeon E5-2670 v3)

SPECint\_base2006 = 57.9

CPU2006 license: 3175

Test sponsor: Huawei

Tested by: Huawei

Test date: Jan-2016

Hardware Availability: Sep-2014

Software Availability: Sep-2014

## General Notes

Environment variables set by runspec before the start of the run:

```
KMP_AFFINITY = "granularity=fine,compact,1,0"  
LD_LIBRARY_PATH = "/spec/libs/32:/spec/libs/64:/spec/sh"  
OMP_NUM_THREADS = "24"
```

Binaries compiled on a system with 1x Core i5-4670K CPU + 16GB memory using RedHat EL 7.0

Transparent Huge Pages enabled with:

```
echo always > /sys/kernel/mm/transparent_hugepage/enabled  
runspec command invoked through numactl i.e.:  
numactl --interleave=all runspec <etc>
```

## Base Compiler Invocation

C benchmarks:

```
icc -m64
```

C++ benchmarks:

```
icpc -m64
```

## Base Portability Flags

```
400.perlbench: -DSPEC_CPU_LP64 -DSPEC_CPU_LINUX_X64  
401.bzip2: -DSPEC_CPU_LP64  
403.gcc: -DSPEC_CPU_LP64  
429.mcf: -DSPEC_CPU_LP64  
445.gobmk: -DSPEC_CPU_LP64  
456.hmmer: -DSPEC_CPU_LP64  
458.sjeng: -DSPEC_CPU_LP64  
462.libquantum: -DSPEC_CPU_LP64 -DSPEC_CPU_LINUX  
464.h264ref: -DSPEC_CPU_LP64  
471.omnetpp: -DSPEC_CPU_LP64  
473.astar: -DSPEC_CPU_LP64  
483.xalancbmk: -DSPEC_CPU_LP64 -DSPEC_CPU_LINUX
```

## Base Optimization Flags

C benchmarks:

```
-xCORE-AVX2 -ipo -O3 -no-prec-div -parallel -opt-prefetch -auto-p32
```

C++ benchmarks:

```
-xCORE-AVX2 -ipo -O3 -no-prec-div -opt-prefetch -auto-p32  
-Wl,-z,muldefs -L/sh -lsmartheap64
```



# SPEC CINT2006 Result

Copyright 2006-2016 Standard Performance Evaluation Corporation

Huawei

SPECint2006 = 60.2

Huawei RH2288H V3 (Intel Xeon E5-2670 v3)

SPECint\_base2006 = 57.9

CPU2006 license: 3175

Test sponsor: Huawei

Tested by: Huawei

Test date: Jan-2016

Hardware Availability: Sep-2014

Software Availability: Sep-2014

## Base Other Flags

C benchmarks:

403.gcc: -Dalloca=\_alloca

## Peak Compiler Invocation

C benchmarks (except as noted below):

icc -m64

400.perlbench: icc -m32 -L/opt/intel/composer\_xe\_2015/lib/ia32

445.gobmk: icc -m32 -L/opt/intel/composer\_xe\_2015/lib/ia32

C++ benchmarks (except as noted below):

icpc -m32 -L/opt/intel/composer\_xe\_2015/lib/ia32

473.astar: icpc -m64

## Peak Portability Flags

400.perlbench: -DSPEC\_CPU\_LINUX\_IA32

401.bzip2: -DSPEC\_CPU\_LP64

403.gcc: -DSPEC\_CPU\_LP64

429.mcf: -DSPEC\_CPU\_LP64

456.hmmer: -DSPEC\_CPU\_LP64

458.sjeng: -DSPEC\_CPU\_LP64

462.libquantum: -DSPEC\_CPU\_LP64 -DSPEC\_CPU\_LINUX

464.h264ref: -DSPEC\_CPU\_LP64

473.astar: -DSPEC\_CPU\_LP64

483.xalancbmk: -DSPEC\_CPU\_LINUX

## Peak Optimization Flags

C benchmarks:

400.perlbench: -xCORE-AVX2(pass 2) -prof-gen(pass 1) -ipo(pass 2)

-O3(pass 2) -no-prec-div(pass 2) -prof-use(pass 2)

-opt-prefetch -ansi-alias

401.bzip2: -xCORE-AVX2(pass 2) -prof-gen(pass 1) -ipo(pass 2)

-O3(pass 2) -no-prec-div -prof-use(pass 2) -auto-ilp32

-opt-prefetch -ansi-alias

Continued on next page

Standard Performance Evaluation Corporation

info@spec.org

http://www.spec.org/



# SPEC CINT2006 Result

Copyright 2006-2016 Standard Performance Evaluation Corporation

Huawei

SPECint2006 = 60.2

Huawei RH2288H V3 (Intel Xeon E5-2670 v3)

SPECint\_base2006 = 57.9

CPU2006 license: 3175

Test sponsor: Huawei

Tested by: Huawei

Test date: Jan-2016

Hardware Availability: Sep-2014

Software Availability: Sep-2014

## Peak Optimization Flags (Continued)

403.gcc: -xCORE-AVX2 -ipo -O3 -no-prec-div -inline-calloc  
-opt-malloc-options=3 -auto-ilp32

429.mcf: -xCORE-AVX2 -ipo -O3 -no-prec-div -parallel  
-opt-prefetch -auto-p32

445.gobmk: -xCORE-AVX2(pass 2) -prof-gen(pass 1) -prof-use(pass 2)  
-ansi-alias

456.hmmmer: basepeak = yes

458.sjeng: -xCORE-AVX2(pass 2) -prof-gen(pass 1) -ipo(pass 2)  
-O3(pass 2) -no-prec-div(pass 2) -prof-use(pass 2)  
-unroll4

462.libquantum: basepeak = yes

464.h264ref: basepeak = yes

C++ benchmarks:

471.omnetpp: -xCORE-AVX2(pass 2) -prof-gen(pass 1) -ipo(pass 2)  
-O3(pass 2) -no-prec-div(pass 2) -prof-use(pass 2)  
-opt-ra-region-strategy=block -ansi-alias  
-Wl,-z,muldefs -L/sh -lsmartheap

473.astar: -xCORE-AVX2 -ipo -O3 -no-prec-div -opt-prefetch  
-auto-p32 -Wl,-z,muldefs -L/sh -lsmartheap64

483.xalancbmk: -xCORE-AVX2 -ipo -O3 -no-prec-div -opt-prefetch  
-ansi-alias -Wl,-z,muldefs -L/sh -lsmartheap

## Peak Other Flags

C benchmarks:

403.gcc: -Dalloca=\_alloca

The flags files that were used to format this result can be browsed at

<http://www.spec.org/cpu2006/flags/Intel-ic15.0-official-linux64.html>

<http://www.spec.org/cpu2006/flags/Huawei-Platform-Settings-HASWELL-V1.4.html>

You can also download the XML flags sources by saving the following links:

<http://www.spec.org/cpu2006/flags/Intel-ic15.0-official-linux64.xml>

<http://www.spec.org/cpu2006/flags/Huawei-Platform-Settings-HASWELL-V1.4.xml>



# SPEC CINT2006 Result

Copyright 2006-2016 Standard Performance Evaluation Corporation

Huawei

SPECint2006 = 60.2

Huawei RH2288H V3 (Intel Xeon E5-2670 v3)

SPECint\_base2006 = 57.9

CPU2006 license: 3175

Test sponsor: Huawei

Tested by: Huawei

Test date: Jan-2016

Hardware Availability: Sep-2014

Software Availability: Sep-2014

SPEC and SPECint are registered trademarks of the Standard Performance Evaluation Corporation. All other brand and product names appearing in this result are trademarks or registered trademarks of their respective holders.

For questions about this result, please contact the tester.  
For other inquiries, please contact [webmaster@spec.org](mailto:webmaster@spec.org).

Tested with SPEC CPU2006 v1.2.  
Report generated on Tue Feb 23 17:36:42 2016 by SPEC CPU2006 PS/PDF formatter v6932.  
Originally published on 23 February 2016.