



# SPEC<sup>®</sup> CINT2006 Result

Copyright 2006-2015 Standard Performance Evaluation Corporation

## Huawei

SPECint<sup>®</sup>2006 = 35.1

### Huawei 5288 V3 (Intel Xeon E5-2609 v3)

SPECint\_base2006 = 33.8

CPU2006 license: 3175

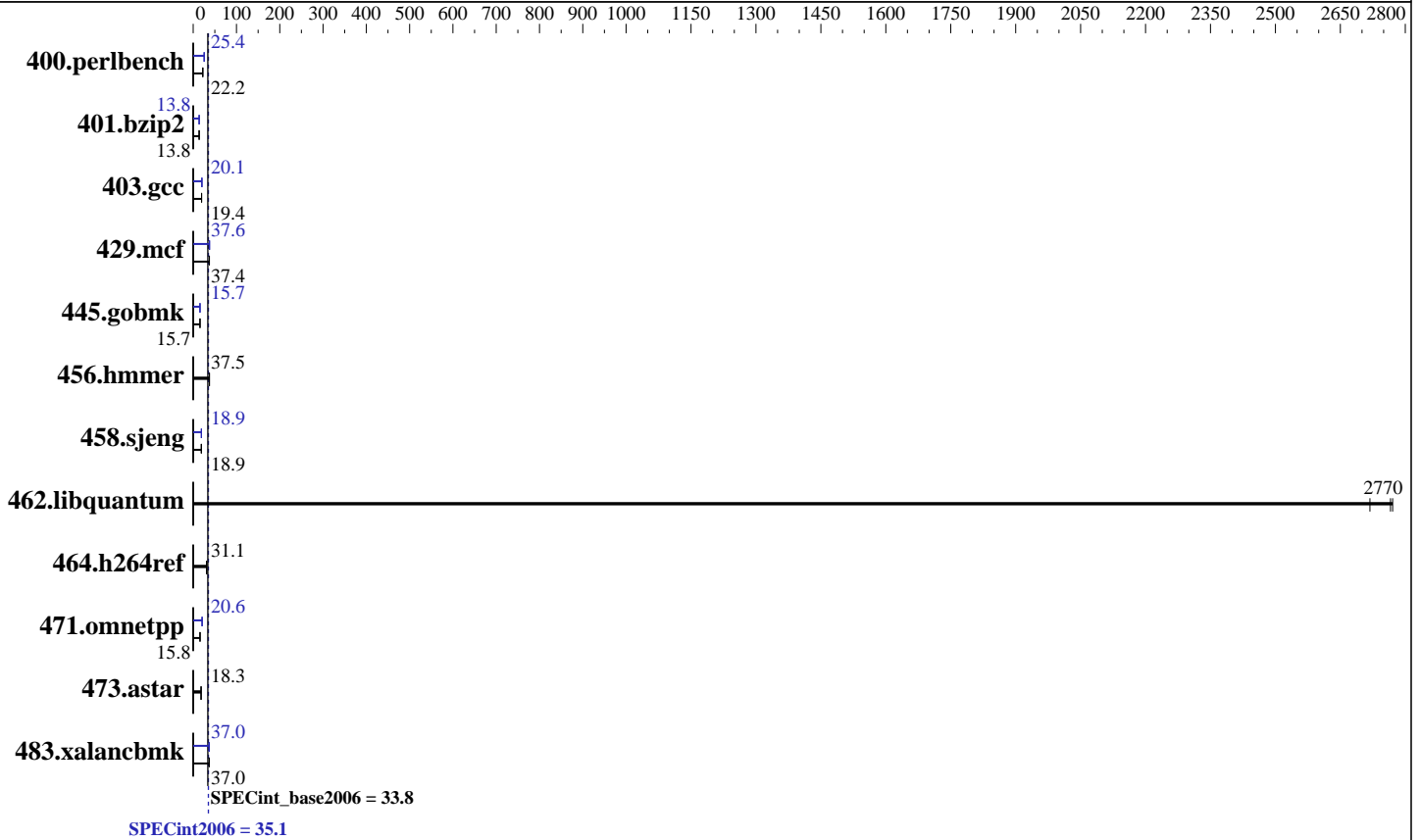
Test sponsor: Huawei

Tested by: Huawei

Test date: Jul-2015

Hardware Availability: Sep-2014

Software Availability: Sep-2014



### Hardware

CPU Name: Intel Xeon E5-2609 v3  
 CPU Characteristics:  
 CPU MHz: 1900  
 FPU: Integrated  
 CPU(s) enabled: 12 cores, 2 chips, 6 cores/chip  
 CPU(s) orderable: 1,2 chip  
 Primary Cache: 32 KB I + 32 KB D on chip per core  
 Secondary Cache: 256 KB I+D on chip per core  
 L3 Cache: 15 MB I+D on chip per chip  
 Other Cache: None  
 Memory: 256 GB (16 x 16 GB 2Rx4 PC4-2133P-R, running at 1600 MHz)  
 Disk Subsystem: 1 x 500 GB SATA, 7200 RPM  
 Other Hardware: None

### Software

Operating System: Red Hat Enterprise Linux Server release 7.0 (Maipo)  
 3.10.0-123.el7.x86\_64  
 Compiler: C/C++: Version 15.0.0.090 of Intel C++ Studio XE for Linux  
 Auto Parallel: Yes  
 File System: ext4  
 System State: Run level 3 (multi-user)  
 Base Pointers: 32/64-bit  
 Peak Pointers: 32/64-bit  
 Other Software: Microquill SmartHeap V10.0



# SPEC CINT2006 Result

Copyright 2006-2015 Standard Performance Evaluation Corporation

Huawei

SPECint2006 = 35.1

Huawei 5288 V3 (Intel Xeon E5-2609 v3)

SPECint\_base2006 = 33.8

CPU2006 license: 3175  
Test sponsor: Huawei  
Tested by: Huawei

Test date: Jul-2015  
Hardware Availability: Sep-2014  
Software Availability: Sep-2014

## Results Table

Benchmark	Base						Peak					
	Seconds	Ratio	Seconds	Ratio	Seconds	Ratio	Seconds	Ratio	Seconds	Ratio	Seconds	Ratio
400.perlbench	<b>441</b>	<b><u>22.2</u></b>	441	22.2	441	22.1	385	25.4	385	25.4	<b>385</b>	<b><u>25.4</u></b>
401.bzip2	697	13.8	<b>700</b>	<b><u>13.8</u></b>	702	13.7	<b>699</b>	<b><u>13.8</u></b>	700	13.8	698	13.8
403.gcc	<b>415</b>	<b><u>19.4</u></b>	416	19.3	414	19.4	399	20.2	402	20.0	<b>400</b>	<b><u>20.1</u></b>
429.mcf	244	37.3	<b>244</b>	<b><u>37.4</u></b>	243	37.5	243	37.6	<b>242</b>	<b><u>37.6</u></b>	241	37.9
445.gobmk	<b>668</b>	<b><u>15.7</u></b>	668	15.7	668	15.7	668	15.7	<b>668</b>	<b><u>15.7</u></b>	668	15.7
456.hammer	249	37.5	248	37.5	<b>249</b>	<b><u>37.5</u></b>	249	37.5	248	37.5	<b>249</b>	<b><u>37.5</u></b>
458.sjeng	642	18.9	641	18.9	<b>641</b>	<b><u>18.9</u></b>	<b>639</b>	<b><u>18.9</u></b>	639	18.9	639	18.9
462.libquantum	<b>7.49</b>	<b><u>2770</u></b>	7.62	2720	7.48	2770	<b>7.49</b>	<b><u>2770</u></b>	7.62	2720	7.48	2770
464.h264ref	<b>713</b>	<b><u>31.1</u></b>	712	31.1	713	31.1	<b>713</b>	<b><u>31.1</u></b>	712	31.1	713	31.1
471.omnetpp	397	15.8	<b>397</b>	<b><u>15.8</u></b>	396	15.8	304	20.6	302	20.7	<b>303</b>	<b><u>20.6</u></b>
473.astar	<b>384</b>	<b><u>18.3</u></b>	383	18.3	385	18.2	<b>384</b>	<b><u>18.3</u></b>	383	18.3	385	18.2
483.xalancbmk	187	36.9	185	37.2	<b>186</b>	<b><u>37.0</u></b>	189	36.5	186	37.1	<b>187</b>	<b><u>37.0</u></b>

Results appear in the order in which they were run. Bold underlined text indicates a median measurement.

## Submit Notes

The config file option 'submit' was used.

## Operating System Notes

Stack size set to unlimited using "ulimit -s unlimited"

## Platform Notes

BIOS configuration:  
Set Power Efficiency Mode to Performance  
Set Snoop Mode to ES mode  
Set Patrol Scrub to Disable  
Sysinfo program /spec/config/sysinfo.rev6914  
\$Rev: 6914 \$ \$Date:: 2014-06-25 #\$ e3fbb8667b5a285932ceab81e28219e1  
running on localhost.localdomain Mon Jul 20 05:45:24 2015

This section contains SUT (System Under Test) info as seen by some common utilities. To remove or add to this section, see:  
<http://www.spec.org/cpu2006/Docs/config.html#sysinfo>

From /proc/cpuinfo  
model name : Intel(R) Xeon(R) CPU E5-2609 v3 @ 1.90GHz  
2 "physical id"s (chips)  
12 "processors"  
cores, siblings (Caution: counting these is hw and system dependent. The following excerpts from /proc/cpuinfo might not be reliable. Use with caution.)

Continued on next page



# SPEC CINT2006 Result

Copyright 2006-2015 Standard Performance Evaluation Corporation

Huawei

SPECint2006 = 35.1

Huawei 5288 V3 (Intel Xeon E5-2609 v3)

SPECint\_base2006 = 33.8

CPU2006 license: 3175

Test sponsor: Huawei

Tested by: Huawei

Test date: Jul-2015

Hardware Availability: Sep-2014

Software Availability: Sep-2014

## Platform Notes (Continued)

```

cpu cores : 6
siblings  : 6
physical 0: cores 0 1 2 3 4 5
physical 1: cores 0 1 2 3 4 5
cache size : 15360 KB

```

From /proc/meminfo

```

MemTotal:      263579840 kB
HugePages_Total:      0
Hugepagesize:    2048 kB

```

From /etc/\*release\* /etc/\*version\*

```

os-release:
NAME="Red Hat Enterprise Linux Server"
VERSION="7.0 (Maipo)"
ID="rhel"
ID_LIKE="fedora"
VERSION_ID="7.0"
PRETTY_NAME="Red Hat Enterprise Linux Server 7.0 (Maipo)"
ANSI_COLOR="0;31"
CPE_NAME="cpe:/o:redhat:enterprise_linux:7.0:GA:server"
redhat-release: Red Hat Enterprise Linux Server release 7.0 (Maipo)
system-release: Red Hat Enterprise Linux Server release 7.0 (Maipo)
system-release-cpe: cpe:/o:redhat:enterprise_linux:7.0:ga:server

```

uname -a:

```

Linux localhost.localdomain 3.10.0-123.el7.x86_64 #1 SMP Mon May 5 11:16:57
EDT 2014 x86_64 x86_64 x86_64 GNU/Linux

```

run-level 3 Jul 20 05:42

SPEC is set to: /spec

```

Filesystem      Type      Size      Used Avail Use% Mounted on
/dev/sdal        ext4     385G      55G  311G  15% /

```

Additional information from dmidecode:

Warning: Use caution when you interpret this section. The 'dmidecode' program reads system data which is "intended to allow hardware to be accurately determined", but the intent may not be met, as there are frequent changes to hardware, firmware, and the "DMTF SMBIOS" standard.

BIOS Insyde Corp. 1.50 05/26/2015

Memory:

```

8x Micron 36ASF2G72PZ-2G1A2 16 GB 1 rank 2133 MHz, configured at 1600 MHz
8x Micron 36ASF2G72PZ-2G1A2 16 GB 2 rank 2133 MHz, configured at 1600 MHz

```

(End of data from sysinfo program)



# SPEC CINT2006 Result

Copyright 2006-2015 Standard Performance Evaluation Corporation

Huawei

SPECint2006 = 35.1

Huawei 5288 V3 (Intel Xeon E5-2609 v3)

SPECint\_base2006 = 33.8

CPU2006 license: 3175

Test sponsor: Huawei

Tested by: Huawei

Test date: Jul-2015

Hardware Availability: Sep-2014

Software Availability: Sep-2014

## General Notes

Environment variables set by runspec before the start of the run:

```
KMP_AFFINITY = "granularity=fine,compact,1,0"
LD_LIBRARY_PATH = "/spec/libs/32:/spec/libs/64:/spec/sh"
OMP_NUM_THREADS = "12"
```

Binaries compiled on a system with 1x Core i5-4670K CPU + 16GB memory using RedHat EL 7.0

Transparent Huge Pages enabled with:

```
echo always > /sys/kernel/mm/transparent_hugepage/enabled
```

runspec command invoked through numactl i.e.:

```
numactl --interleave=all runspec <etc>
```

## Base Compiler Invocation

C benchmarks:

```
icc -m64
```

C++ benchmarks:

```
icpc -m64
```

## Base Portability Flags

```
400.perlbench: -DSPEC_CPU_LP64 -DSPEC_CPU_LINUX_X64
401.bzip2: -DSPEC_CPU_LP64
403.gcc: -DSPEC_CPU_LP64
429.mcf: -DSPEC_CPU_LP64
445.gobmk: -DSPEC_CPU_LP64
456.hmmer: -DSPEC_CPU_LP64
458.sjeng: -DSPEC_CPU_LP64
462.libquantum: -DSPEC_CPU_LP64 -DSPEC_CPU_LINUX
464.h264ref: -DSPEC_CPU_LP64
471.omnetpp: -DSPEC_CPU_LP64
473.astar: -DSPEC_CPU_LP64
483.xalancbmk: -DSPEC_CPU_LP64 -DSPEC_CPU_LINUX
```

## Base Optimization Flags

C benchmarks:

```
-xCORE-AVX2 -ipo -O3 -no-prec-div -parallel -opt-prefetch -auto-p32
```

C++ benchmarks:

```
-xCORE-AVX2 -ipo -O3 -no-prec-div -opt-prefetch -auto-p32
-Wl,-z,muldefs -L/sh -lsmartheap64
```



# SPEC CINT2006 Result

Copyright 2006-2015 Standard Performance Evaluation Corporation

<b>Huawei</b>	<b>SPECint2006 =</b>	<b>35.1</b>
<b>Huawei 5288 V3 (Intel Xeon E5-2609 v3)</b>	<b>SPECint_base2006 =</b>	<b>33.8</b>

<b>CPU2006 license:</b> 3175	<b>Test date:</b> Jul-2015
<b>Test sponsor:</b> Huawei	<b>Hardware Availability:</b> Sep-2014
<b>Tested by:</b> Huawei	<b>Software Availability:</b> Sep-2014

## Base Other Flags

C benchmarks:

403.gcc: -Dalloca=\_alloca

## Peak Compiler Invocation

C benchmarks (except as noted below):

icc -m64

400.perlbench: icc -m32 -L/opt/intel/composer\_xe\_2015/lib/ia32

445.gobmk: icc -m32 -L/opt/intel/composer\_xe\_2015/lib/ia32

C++ benchmarks (except as noted below):

icpc -m32 -L/opt/intel/composer\_xe\_2015/lib/ia32

473.astar: icpc -m64

## Peak Portability Flags

400.perlbench: -DSPEC\_CPU\_LINUX\_IA32  
 401.bzip2: -DSPEC\_CPU\_LP64  
 403.gcc: -DSPEC\_CPU\_LP64  
 429.mcf: -DSPEC\_CPU\_LP64  
 456.hmmer: -DSPEC\_CPU\_LP64  
 458.sjeng: -DSPEC\_CPU\_LP64  
 462.libquantum: -DSPEC\_CPU\_LP64 -DSPEC\_CPU\_LINUX  
 464.h264ref: -DSPEC\_CPU\_LP64  
 473.astar: -DSPEC\_CPU\_LP64  
 483.xalancbmk: -DSPEC\_CPU\_LINUX

## Peak Optimization Flags

C benchmarks:

400.perlbench: -xCORE-AVX2(pass 2) -prof-gen(pass 1) -ipo(pass 2)  
 -O3(pass 2) -no-prec-div(pass 2) -prof-use(pass 2)  
 -opt-prefetch -ansi-alias

401.bzip2: -xCORE-AVX2(pass 2) -prof-gen(pass 1) -ipo(pass 2)  
 -O3(pass 2) -no-prec-div -prof-use(pass 2) -auto-ilp32  
 -opt-prefetch -ansi-alias

Continued on next page



# SPEC CINT2006 Result

Copyright 2006-2015 Standard Performance Evaluation Corporation

Huawei

SPECint2006 = 35.1

Huawei 5288 V3 (Intel Xeon E5-2609 v3)

SPECint\_base2006 = 33.8

CPU2006 license: 3175

Test sponsor: Huawei

Tested by: Huawei

Test date: Jul-2015

Hardware Availability: Sep-2014

Software Availability: Sep-2014

## Peak Optimization Flags (Continued)

403.gcc: -xCORE-AVX2 -ipo -O3 -no-prec-div -inline-calloc  
-opt-malloc-options=3 -auto-ilp32

429.mcf: -xCORE-AVX2 -ipo -O3 -no-prec-div -parallel  
-opt-prefetch -auto-p32

445.gobmk: -xCORE-AVX2(pass 2) -prof-gen(pass 1) -prof-use(pass 2)  
-ansi-alias

456.hmmmer: basepeak = yes

458.sjeng: -xCORE-AVX2(pass 2) -prof-gen(pass 1) -ipo(pass 2)  
-O3(pass 2) -no-prec-div(pass 2) -prof-use(pass 2)  
-unroll4

462.libquantum: basepeak = yes

464.h264ref: basepeak = yes

C++ benchmarks:

471.omnetpp: -xCORE-AVX2(pass 2) -prof-gen(pass 1) -ipo(pass 2)  
-O3(pass 2) -no-prec-div(pass 2) -prof-use(pass 2)  
-opt-ra-region-strategy=block -ansi-alias  
-Wl,-z,muldefs -L/sh -lsmartheap

473.astar: basepeak = yes

483.xalancbmk: -xCORE-AVX2 -ipo -O3 -no-prec-div -opt-prefetch  
-ansi-alias -Wl,-z,muldefs -L/sh -lsmartheap

## Peak Other Flags

C benchmarks:

403.gcc: -Dalloca=\_alloca

The flags files that were used to format this result can be browsed at

<http://www.spec.org/cpu2006/flags/Intel-ic15.0-official-linux64.html>

<http://www.spec.org/cpu2006/flags/Huawei-Platform-Settings-HASWELL-V1.4.html>

You can also download the XML flags sources by saving the following links:

<http://www.spec.org/cpu2006/flags/Intel-ic15.0-official-linux64.xml>

<http://www.spec.org/cpu2006/flags/Huawei-Platform-Settings-HASWELL-V1.4.xml>



# SPEC CINT2006 Result

Copyright 2006-2015 Standard Performance Evaluation Corporation

Huawei

SPECint2006 = 35.1

Huawei 5288 V3 (Intel Xeon E5-2609 v3)

SPECint\_base2006 = 33.8

CPU2006 license: 3175

Test sponsor: Huawei

Tested by: Huawei

Test date: Jul-2015

Hardware Availability: Sep-2014

Software Availability: Sep-2014

SPEC and SPECint are registered trademarks of the Standard Performance Evaluation Corporation. All other brand and product names appearing in this result are trademarks or registered trademarks of their respective holders.

For questions about this result, please contact the tester.  
For other inquiries, please contact [webmaster@spec.org](mailto:webmaster@spec.org).

Tested with SPEC CPU2006 v1.2.  
Report generated on Wed Aug 12 11:07:23 2015 by SPEC CPU2006 PS/PDF formatter v6932.  
Originally published on 12 August 2015.