



SPEC® CINT2006 Result

Copyright 2006-2015 Standard Performance Evaluation Corporation

Supermicro

SuperServer 2048U-RTR4
(X10QRH+ , Intel Xeon E5-4667 v3)

SPECint®2006 = 55.5

SPECint_base2006 = 54.0

CPU2006 license: 001176

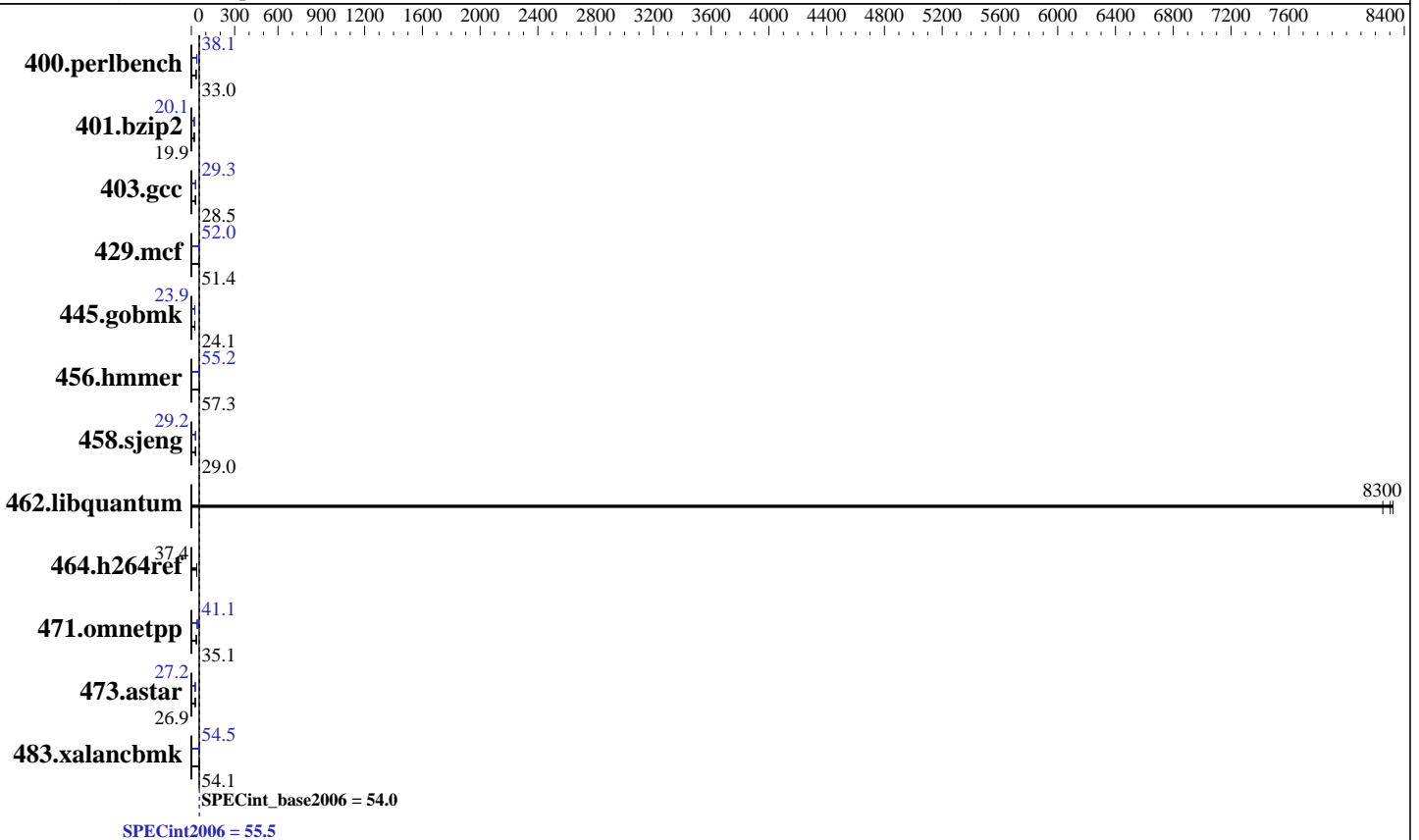
Test sponsor: Supermicro

Tested by: Supermicro

Test date: Jun-2015

Hardware Availability: Jun-2015

Software Availability: Oct-2014



Hardware

CPU Name: Intel Xeon E5-4667 v3
 CPU Characteristics: Intel Turbo Boost Technology up to 2.90 GHz
 CPU MHz: 2000
 FPU: Integrated
 CPU(s) enabled: 64 cores, 4 chips, 16 cores/chip
 CPU(s) orderable: 1,2,4 chips
 Primary Cache: 32 KB I + 32 KB D on chip per core
 Secondary Cache: 256 KB I+D on chip per core
 L3 Cache: 40 MB I+D on chip per chip
 Other Cache: None
 Memory: 512 GB (32 x 16 GB 2Rx4 PC4-2133P-R)
 Disk Subsystem: 1 x 600 GB SATA II, SSD
 Other Hardware: None

Software

Operating System: SUSE Linux Enterprise Server 12,
Kernel 3.12.28-4-default
 Compiler: C/C++: Version 15.0.0.090 of Intel C++ Studio XE for Linux
 Auto Parallel: Yes
 File System: ext4
 System State: Run level 3 (multi-user)
 Base Pointers: 32/64-bit
 Peak Pointers: 32/64-bit
 Other Software: Microquill SmartHeap V10.0



SPEC CINT2006 Result

Copyright 2006-2015 Standard Performance Evaluation Corporation

Supermicro

SuperServer 2048U-RTR4
(X10QRH+ , Intel Xeon E5-4667 v3)

SPECint2006 = **55.5**

SPECint_base2006 = **54.0**

CPU2006 license: 001176
Test sponsor: Supermicro
Tested by: Supermicro

Test date: Jun-2015
Hardware Availability: Jun-2015
Software Availability: Oct-2014

Results Table

Benchmark	Base						Peak					
	Seconds	Ratio	Seconds	Ratio	Seconds	Ratio	Seconds	Ratio	Seconds	Ratio	Seconds	Ratio
400.perlbench	296	33.0	296	33.1	298	32.8	259	37.7	256	38.1	257	38.1
401.bzip2	485	19.9	486	19.8	486	19.9	480	20.1	481	20.1	481	20.1
403.gcc	281	28.6	282	28.5	282	28.5	275	29.3	275	29.3	275	29.3
429.mcf	176	51.9	177	51.4	181	50.5	176	51.8	175	52.0	175	52.2
445.gobmk	437	24.0	435	24.1	436	24.1	439	23.9	439	23.9	439	23.9
456.hammer	163	57.3	163	57.3	163	57.3	169	55.2	169	55.2	169	55.2
458.sjeng	417	29.0	417	29.0	417	29.0	415	29.2	415	29.2	415	29.2
462.libquantum	2.50	8300	2.49	8320	2.51	8250	2.50	8300	2.49	8320	2.51	8250
464.h264ref	590	37.5	592	37.4	595	37.2	590	37.5	592	37.4	595	37.2
471.omnetpp	178	35.2	178	35.1	184	33.9	152	41.1	152	41.1	152	41.1
473.astar	261	26.9	261	26.9	260	27.0	258	27.2	259	27.1	258	27.2
483.xalancbmk	128	54.1	128	53.8	128	54.1	126	54.5	126	54.7	127	54.5

Results appear in the order in which they were run. Bold underlined text indicates a median measurement.

Submit Notes

The config file option 'submit' was used.

Operating System Notes

Stack size set to unlimited using "ulimit -s unlimited"

Platform Notes

BIOS Settings:

Hyper-Threading (ALL) = Disable

COD Enable = Disable

Early Snoop = Disable

Enforce POR = Disabled

Sysinfo program /home/SPEC2K6/SPEC2006-V12/config/sysinfo.rev6914

\$Rev: 6914 \$ \$Date:: 2014-06-25 #\$ e3fbb8667b5a285932ceab81e28219e1

running on 18-216 Thu Jun 18 10:37:26 2015

This section contains SUT (System Under Test) info as seen by some common utilities. To remove or add to this section, see:

<http://www.spec.org/cpu2006/Docs/config.html#sysinfo>

From /proc/cpuinfo

model name : Intel(R) Xeon(R) CPU E5-4667 v3 @ 2.00GHz

4 "physical id"s (chips)

64 "processors"

cores, siblings (Caution: counting these is hw and system dependent. The following excerpts from /proc/cpuinfo might not be reliable. Use with

Continued on next page

Standard Performance Evaluation Corporation

info@spec.org

<http://www.spec.org/>



SPEC CINT2006 Result

Copyright 2006-2015 Standard Performance Evaluation Corporation

Supermicro

SuperServer 2048U-RTR4
(X10QRH+ , Intel Xeon E5-4667 v3)

SPECint2006 = **55.5**

SPECint_base2006 = **54.0**

CPU2006 license: 001176

Test sponsor: Supermicro

Tested by: Supermicro

Test date: Jun-2015

Hardware Availability: Jun-2015

Software Availability: Oct-2014

Platform Notes (Continued)

caution.)

cpu cores : 16

siblings : 16

physical 0: cores 0 1 2 3 4 5 6 7 8 9 10 11 12 13 14 15

physical 1: cores 0 1 2 3 4 5 6 7 8 9 10 11 12 13 14 15

physical 2: cores 0 1 2 3 4 5 6 7 8 9 10 11 12 13 14 15

physical 3: cores 0 1 2 3 4 5 6 7 8 9 10 11 12 13 14 15

cache size : 40960 KB

From /proc/meminfo

MemTotal: 529334248 kB

HugePages_Total: 0

Hugepagesize: 2048 kB

/usr/bin/lsb_release -d

SUSE Linux Enterprise Server 12

From /etc/*release* /etc/*version*

SuSE-release:

SUSE Linux Enterprise Server 12 (x86_64)

VERSION = 12

PATCHLEVEL = 0

This file is deprecated and will be removed in a future service pack or release.

Please check /etc/os-release for details about this release.

os-release:

NAME="SLES"

VERSION="12"

VERSION_ID="12"

PRETTY_NAME="SUSE Linux Enterprise Server 12"

ID="sles"

ANSI_COLOR="0;32"

CPE_NAME="cpe:/o:suse:sles:12"

uname -a:

Linux 18-216 3.12.28-4-default #1 SMP Thu Sep 25 17:02:34 UTC 2014 (9879bd4)

x86_64 x86_64 x86_64 GNU/Linux

run-level 5 Jun 18 10:34

SPEC is set to: /home/SPEC2K6/SPEC2006-V12

Filesystem Type Size Used Avail Use% Mounted on

/dev/sda3 ext4 529G 7.5G 520G 2% /home

Additional information from dmidecode:

Warning: Use caution when you interpret this section. The 'dmidecode' program reads system data which is "intended to allow hardware to be accurately determined", but the intent may not be met, as there are frequent changes to hardware, firmware, and the "DMTF SMBIOS" standard.

BIOS American Megatrends Inc. 1.00 05/28/2015

Memory:

Continued on next page



SPEC CINT2006 Result

Copyright 2006-2015 Standard Performance Evaluation Corporation

Supermicro

SuperServer 2048U-RTR4
(X10QRH+ , Intel Xeon E5-4667 v3)

SPECint2006 = 55.5

SPECint_base2006 = 54.0

CPU2006 license: 001176
Test sponsor: Supermicro
Tested by: Supermicro

Test date: Jun-2015
Hardware Availability: Jun-2015
Software Availability: Oct-2014

Platform Notes (Continued)

16x NO DIMM NO DIMM
7x Samsung(data:13/51) M393A2G40DB0-CPB 16 GB 2 rank 2133 MHz
3x Samsung(data:14/16) M393A2G40DB0-CPB 16 GB 2 rank 2133 MHz
8x Samsung(data:14/17) M393A2G40DB0-CPB 16 GB 2 rank 2133 MHz
6x Samsung(data:14/25) M393A2G40DB0-CPB 16 GB 2 rank 2133 MHz
8x Samsung(data:14/26) M393A2G40DB0-CPB 16 GB 2 rank 2133 MHz

(End of data from sysinfo program)

General Notes

Environment variables set by runspec before the start of the run:

KMP_AFFINITY = "granularity=fine,scatter"

LD_LIBRARY_PATH = "/home/SPEC2K6/SPEC2006-V12/libs/32:/home/SPEC2K6/SPEC2006-V12/libs/64:/home/SPEC2K6/SPEC2006-V12/sh"

OMP_NUM_THREADS = "64"

Binaries compiled on a system with 1x Core i5-4670K CPU + 16GB memory using RedHat EL 7.0

Transparent Huge Pages enabled with:

echo always > /sys/kernel/mm/transparent_hugepage/enabled

Base Compiler Invocation

C benchmarks:

icc -m64

C++ benchmarks:

icpc -m64

Base Portability Flags

400.perlbench: -DSPEC_CPU_LP64 -DSPEC_CPU_LINUX_X64
401.bzip2: -DSPEC_CPU_LP64
403.gcc: -DSPEC_CPU_LP64
429.mcf: -DSPEC_CPU_LP64
445.gobmk: -DSPEC_CPU_LP64
456.hmmer: -DSPEC_CPU_LP64
458.sjeng: -DSPEC_CPU_LP64
462.libquantum: -DSPEC_CPU_LP64 -DSPEC_CPU_LINUX
464.h264ref: -DSPEC_CPU_LP64
471.omnetpp: -DSPEC_CPU_LP64
473.astar: -DSPEC_CPU_LP64
483.xalancbmk: -DSPEC_CPU_LP64 -DSPEC_CPU_LINUX



SPEC CINT2006 Result

Copyright 2006-2015 Standard Performance Evaluation Corporation

Supermicro

SuperServer 2048U-RTR4
(X10QRH+ , Intel Xeon E5-4667 v3)

SPECint2006 = 55.5

SPECint_base2006 = 54.0

CPU2006 license: 001176
Test sponsor: Supermicro
Tested by: Supermicro

Test date: Jun-2015
Hardware Availability: Jun-2015
Software Availability: Oct-2014

Base Optimization Flags

C benchmarks:

-xCORE-AVX2 -ipo -O3 -no-prec-div -parallel -opt-prefetch -auto-p32

C++ benchmarks:

-xCORE-AVX2 -ipo -O3 -no-prec-div -opt-prefetch -auto-p32
-Wl,-z,muldefs -L/sh -lsmartheap64

Base Other Flags

C benchmarks:

403.gcc: -Dalloca=_alloca

Peak Compiler Invocation

C benchmarks (except as noted below):

icc -m64

400.perlbench: icc -m32 -L/opt/intel/composer_xe_2015/lib/ia32

445.gobmk: icc -m32 -L/opt/intel/composer_xe_2015/lib/ia32

C++ benchmarks (except as noted below):

icpc -m32 -L/opt/intel/composer_xe_2015/lib/ia32

473.astar: icpc -m64

Peak Portability Flags

400.perlbench: -DSPEC_CPU_LINUX_IA32

401.bzip2: -DSPEC_CPU_LP64

403.gcc: -DSPEC_CPU_LP64

429.mcf: -DSPEC_CPU_LP64

456.hmmer: -DSPEC_CPU_LP64

458.sjeng: -DSPEC_CPU_LP64

462.libquantum: -DSPEC_CPU_LP64 -DSPEC_CPU_LINUX

464.h264ref: -DSPEC_CPU_LP64

473.astar: -DSPEC_CPU_LP64

483.xalancbmk: -DSPEC_CPU_LINUX



SPEC CINT2006 Result

Copyright 2006-2015 Standard Performance Evaluation Corporation

Supermicro

SuperServer 2048U-RTR4
(X10QRH+ , Intel Xeon E5-4667 v3)

SPECint2006 = 55.5

SPECint_base2006 = 54.0

CPU2006 license: 001176

Test sponsor: Supermicro

Tested by: Supermicro

Test date: Jun-2015

Hardware Availability: Jun-2015

Software Availability: Oct-2014

Peak Optimization Flags

C benchmarks:

400.perlbench: -xCORE-AVX2(pass 2) -prof-gen(pass 1) -ipo(pass 2)
-O3(pass 2) -no-prec-div(pass 2) -prof-use(pass 2)
-opt-prefetch -ansi-alias

401.bzip2: -xCORE-AVX2(pass 2) -prof-gen(pass 1) -ipo(pass 2)
-O3(pass 2) -no-prec-div -prof-use(pass 2) -auto-ilp32
-opt-prefetch -ansi-alias

403.gcc: -xCORE-AVX2 -ipo -O3 -no-prec-div -inline-calloc
-opt-malloc-options=3 -auto-ilp32

429.mcf: -xCORE-AVX2 -ipo -O3 -no-prec-div -parallel
-opt-prefetch -auto-p32

445.gobmk: -xCORE-AVX2(pass 2) -prof-gen(pass 1) -prof-use(pass 2)
-ansi-alias

456.hmmer: -xCORE-AVX2 -ipo -O3 -no-prec-div -unroll2 -auto-ilp32
-ansi-alias

458.sjeng: -xCORE-AVX2(pass 2) -prof-gen(pass 1) -ipo(pass 2)
-O3(pass 2) -no-prec-div(pass 2) -prof-use(pass 2)
-unroll4

462.libquantum: basepeak = yes

464.h264ref: basepeak = yes

C++ benchmarks:

471.omnetpp: -xCORE-AVX2(pass 2) -prof-gen(pass 1) -ipo(pass 2)
-O3(pass 2) -no-prec-div(pass 2) -prof-use(pass 2)
-opt-ra-region-strategy=block -ansi-alias
-Wl,-z,muldefs -L/sh -lsmarheap

473.astar: -xCORE-AVX2 -ipo -O3 -no-prec-div -opt-prefetch
-auto-p32 -Wl,-z,muldefs -L/sh -lsmarheap64

483.xalancbmk: -xCORE-AVX2 -ipo -O3 -no-prec-div -opt-prefetch
-ansi-alias -Wl,-z,muldefs -L/sh -lsmarheap

Peak Other Flags

C benchmarks:

Continued on next page



SPEC CINT2006 Result

Copyright 2006-2015 Standard Performance Evaluation Corporation

Supermicro

SuperServer 2048U-RTR4
(X10QRH+ , Intel Xeon E5-4667 v3)

SPECint2006 = 55.5

SPECint_base2006 = 54.0

CPU2006 license: 001176

Test sponsor: Supermicro

Tested by: Supermicro

Test date: Jun-2015

Hardware Availability: Jun-2015

Software Availability: Oct-2014

Peak Other Flags (Continued)

403.gcc: -Dalloca=_alloca

The flags files that were used to format this result can be browsed at

<http://www.spec.org/cpu2006/flags/Intel-ic15.0-official-linux64.html>

<http://www.spec.org/cpu2006/flags/Supermicro-Platform-Settings-V1.2-revG.20141230.00.html>

You can also download the XML flags sources by saving the following links:

<http://www.spec.org/cpu2006/flags/Intel-ic15.0-official-linux64.xml>

<http://www.spec.org/cpu2006/flags/Supermicro-Platform-Settings-V1.2-revG.20141230.00.xml>

SPEC and SPECint are registered trademarks of the Standard Performance Evaluation Corporation. All other brand and product names appearing in this result are trademarks or registered trademarks of their respective holders.

For questions about this result, please contact the tester.
For other inquiries, please contact webmaster@spec.org.

Tested with SPEC CPU2006 v1.2.
Report generated on Thu Aug 6 13:25:45 2015 by SPEC CPU2006 PS/PDF formatter v6932.
Originally published on 6 August 2015.