



SPEC® CFP2006 Result

Copyright 2006-2014 Standard Performance Evaluation Corporation

Dell Inc.

SPECfp®2006 = **108**

PowerEdge M620 (Intel Xeon E5-2667 v2, 3.30 GHz)

SPECfp_base2006 = **104**

CPU2006 license: 55

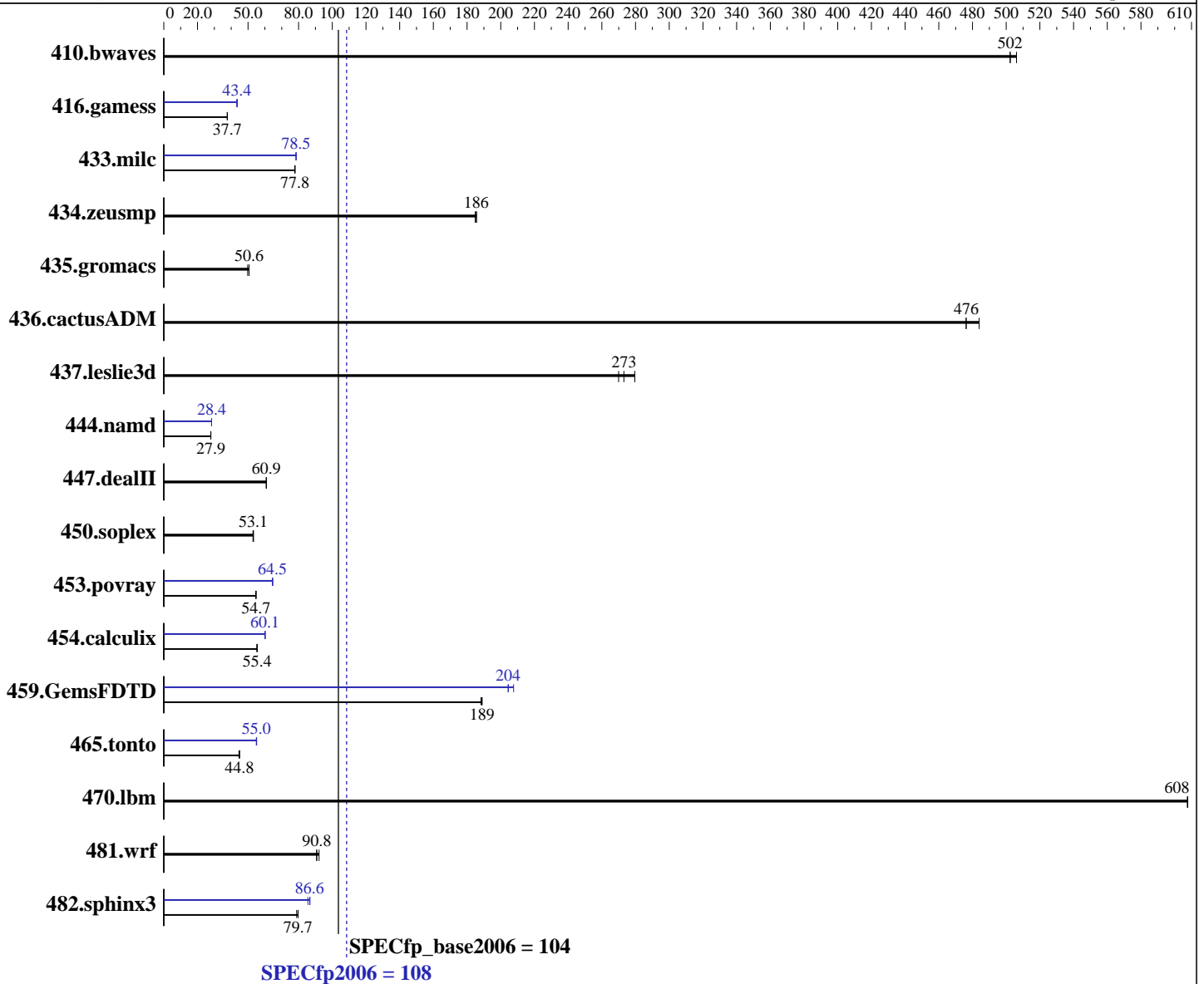
Test date: Sep-2013

Test sponsor: Dell Inc.

Hardware Availability: Sep-2013

Tested by: Dell Inc.

Software Availability: Sep-2013



Hardware

CPU Name: Intel Xeon E5-2667 v2
 CPU Characteristics: Intel Turbo Boost Technology up to 4.00 GHz
 CPU MHz: 3300
 FPU: Integrated
 CPU(s) enabled: 16 cores, 2 chips, 8 cores/chip
 CPU(s) orderable: 1,2 chip
 Primary Cache: 32 KB I + 32 KB D on chip per core
 Secondary Cache: 256 KB I+D on chip per core

Continued on next page

Software

Operating System: SUSE Linux Enterprise Server 11 (x86_64)
 3.0.76-0.11-default
 Compiler: C/C++: Version 14.0.0.080 of Intel C++ Studio XE for Linux;
 Fortran: Version 14.0.0.080 of Intel Fortran Studio XE for Linux
 Auto Parallel: Yes
 File System: ext2
 System State: Run level 3 (multi-user)

Continued on next page



SPEC CFP2006 Result

Copyright 2006-2014 Standard Performance Evaluation Corporation

Dell Inc.

SPECfp2006 = 108

PowerEdge M620 (Intel Xeon E5-2667 v2, 3.30 GHz)

SPECfp_base2006 = 104

CPU2006 license: 55

Test date: Sep-2013

Test sponsor: Dell Inc.

Hardware Availability: Sep-2013

Tested by: Dell Inc.

Software Availability: Sep-2013

L3 Cache: 25 MB I+D on chip per chip
 Other Cache: None
 Memory: 256 GB (16 x 16 GB 2Rx4 PC3-14900R-13, ECC)
 Disk Subsystem: 1 x 250 GB 7200 RPM SATA
 Other Hardware: None

Base Pointers: 64-bit
 Peak Pointers: 32/64-bit
 Other Software: None

Results Table

Benchmark	Base						Peak					
	Seconds	Ratio	Seconds	Ratio	Seconds	Ratio	Seconds	Ratio	Seconds	Ratio	Seconds	Ratio
410.bwaves	26.9	506	<u>27.1</u>	<u>502</u>	27.1	502	26.9	506	<u>27.1</u>	<u>502</u>	27.1	502
416.gamess	519	37.7	<u>520</u>	<u>37.7</u>	520	37.7	449	43.6	<u>451</u>	<u>43.4</u>	452	43.4
433.milc	118	77.9	<u>118</u>	<u>77.8</u>	118	77.8	117	78.6	<u>117</u>	<u>78.5</u>	117	78.5
434.zeusmp	49.2	185	49.0	186	<u>49.0</u>	<u>186</u>	49.2	185	49.0	186	<u>49.0</u>	<u>186</u>
435.gromacs	143	49.8	<u>141</u>	<u>50.6</u>	141	50.6	143	49.8	<u>141</u>	<u>50.6</u>	141	50.6
436.cactusADM	24.7	484	<u>25.1</u>	<u>476</u>	25.1	476	24.7	484	<u>25.1</u>	<u>476</u>	25.1	476
437.leslie3d	34.8	270	33.6	280	<u>34.4</u>	<u>273</u>	34.8	270	33.6	280	<u>34.4</u>	<u>273</u>
444.namd	287	27.9	<u>287</u>	<u>27.9</u>	287	27.9	283	28.4	283	28.4	<u>283</u>	<u>28.4</u>
447.dealII	188	60.9	<u>188</u>	<u>60.9</u>	188	60.8	188	60.9	<u>188</u>	<u>60.9</u>	188	60.8
450.soplex	157	53.2	158	52.9	<u>157</u>	<u>53.1</u>	157	53.2	158	52.9	<u>157</u>	<u>53.1</u>
453.povray	<u>97.3</u>	<u>54.7</u>	97.1	54.8	97.4	54.6	<u>82.4</u>	<u>64.5</u>	82.3	64.7	82.6	64.4
454.calculix	149	55.5	149	55.2	<u>149</u>	<u>55.4</u>	137	60.1	137	60.1	<u>137</u>	<u>60.1</u>
459.GemsFDTD	56.4	188	<u>56.2</u>	<u>189</u>	56.2	189	<u>51.9</u>	<u>204</u>	51.9	204	51.1	208
465.tonto	<u>219</u>	<u>44.8</u>	220	44.6	218	45.0	<u>179</u>	<u>55.0</u>	179	54.9	179	55.1
470.lbm	<u>22.6</u>	<u>608</u>	22.6	608	22.6	608	<u>22.6</u>	<u>608</u>	22.6	608	22.6	608
481.wrf	121	92.2	123	90.7	<u>123</u>	<u>90.8</u>	121	92.2	123	90.7	<u>123</u>	<u>90.8</u>
482.sphinx3	245	79.7	247	78.8	<u>245</u>	<u>79.7</u>	228	85.5	225	86.8	<u>225</u>	<u>86.6</u>

Results appear in the order in which they were run. Bold underlined text indicates a median measurement.

Operating System Notes

Stack size set to unlimited using "ulimit -s unlimited"

Platform Notes

BIOS settings:
 Virtualization Technology disabled
 Execute Disable disabled
 Logical Processor disabled
 System Profile set to Performance
 Sysinfo program /root/cpu2006.1.2.ic13/config/sysinfo.rev6818
 \$Rev: 6818 \$ \$Date:: 2012-07-17 #\$ e86d102572650a6e4d596a3cee98f191
 running on linux-lnqz Mon Sep 9 07:55:53 2013

This section contains SUT (System Under Test) info as seen by
Continued on next page



SPEC CFP2006 Result

Copyright 2006-2014 Standard Performance Evaluation Corporation

Dell Inc.

SPECfp2006 = 108

PowerEdge M620 (Intel Xeon E5-2667 v2, 3.30 GHz)

SPECfp_base2006 = 104

CPU2006 license: 55

Test date: Sep-2013

Test sponsor: Dell Inc.

Hardware Availability: Sep-2013

Tested by: Dell Inc.

Software Availability: Sep-2013

Platform Notes (Continued)

some common utilities. To remove or add to this section, see:
<http://www.spec.org/cpu2006/Docs/config.html#sysinfo>

```

From /proc/cpuinfo
  model name : Intel(R) Xeon(R) CPU E5-2667 v2 @ 3.30GHz
  2 "physical id"s (chips)
  16 "processors"
  cores, siblings (Caution: counting these is hw and system dependent. The
  following excerpts from /proc/cpuinfo might not be reliable. Use with
  caution.)
    cpu cores : 8
    siblings  : 8
    physical 0: cores 1 2 3 4 8 9 10 11
    physical 1: cores 1 2 3 4 8 9 10 11
  cache size : 25600 KB

```

```

From /proc/meminfo
MemTotal:      264634600 kB
HugePages_Total: 0
Hugepagesize:  2048 kB

```

```

/usr/bin/lsb_release -d
SUSE Linux Enterprise Server 11 (x86_64)

```

```

From /etc/*release* /etc/*version*
SuSE-release:
SUSE Linux Enterprise Server 11 (x86_64)
VERSION = 11
PATCHLEVEL = 3

```

```

uname -a:
Linux linux-lnqz 3.0.76-0.11-default #1 SMP Fri Jun 14 08:21:43 UTC 2013
(ccab990) x86_64 x86_64 x86_64 GNU/Linux

```

run-level 3 Sep 5 08:48 last=S

```

SPEC is set to: /root/cpu2006.1.2.ic13
Filesystem      Type  Size  Used Avail Use% Mounted on
/dev/sdal       ext2  198G   22G  176G  11% /

```

```

Additional information from dmidecode:
BIOS Dell Inc. 2.0.19 08/30/2013
Memory:
16x 00AD00B300AD HMT42GR7AFR4C-RD 16 GB 1866 MHz

```

(End of data from sysinfo program)



SPEC CFP2006 Result

Copyright 2006-2014 Standard Performance Evaluation Corporation

Dell Inc.

SPECfp2006 = 108

PowerEdge M620 (Intel Xeon E5-2667 v2, 3.30 GHz)

SPECfp_base2006 = 104

CPU2006 license: 55

Test date: Sep-2013

Test sponsor: Dell Inc.

Hardware Availability: Sep-2013

Tested by: Dell Inc.

Software Availability: Sep-2013

General Notes

Environment variables set by runspec before the start of the run:

```
LD_LIBRARY_PATH = "/root/cpu2006.1.2.ic13/libs/32:/root/cpu2006.1.2.ic13/libs/64:/root/cpu2006.1.2.ic13/sh"
OMP_NUM_THREADS = "16"
```

Binaries compiled on a system with 1x Core i7-860 CPU + 8GB memory using RHEL5.5

Transparent Huge Pages enabled with:

```
echo always > /sys/kernel/mm/transparent_hugepage/enabled
```

Filesystem page cache cleared with:

```
echo 1> /proc/sys/vm/drop_caches
```

Base Compiler Invocation

C benchmarks:

```
icc -m64
```

C++ benchmarks:

```
icpc -m64
```

Fortran benchmarks:

```
ifort -m64
```

Benchmarks using both Fortran and C:

```
icc -m64 ifort -m64
```

Base Portability Flags

```
410.bwaves: -DSPEC_CPU_LP64
416.gamess: -DSPEC_CPU_LP64
433.milc: -DSPEC_CPU_LP64
434.zeusmp: -DSPEC_CPU_LP64
435.gromacs: -DSPEC_CPU_LP64 -nofor_main
436.cactusADM: -DSPEC_CPU_LP64 -nofor_main
437.leslie3d: -DSPEC_CPU_LP64
444.namd: -DSPEC_CPU_LP64
447.dealII: -DSPEC_CPU_LP64
450.soplex: -DSPEC_CPU_LP64
453.povray: -DSPEC_CPU_LP64
454.calculix: -DSPEC_CPU_LP64 -nofor_main
459.GemsFDTD: -DSPEC_CPU_LP64
465.tonto: -DSPEC_CPU_LP64
470.lbm: -DSPEC_CPU_LP64
481.wrf: -DSPEC_CPU_LP64 -DSPEC_CPU_CASE_FLAG -DSPEC_CPU_LINUX
482.sphinx3: -DSPEC_CPU_LP64
```



SPEC CFP2006 Result

Copyright 2006-2014 Standard Performance Evaluation Corporation

Dell Inc.

SPECfp2006 = 108

PowerEdge M620 (Intel Xeon E5-2667 v2, 3.30 GHz)

SPECfp_base2006 = 104

CPU2006 license: 55

Test date: Sep-2013

Test sponsor: Dell Inc.

Hardware Availability: Sep-2013

Tested by: Dell Inc.

Software Availability: Sep-2013

Base Optimization Flags

C benchmarks:

-xAVX -ipo -O3 -no-prec-div -static -parallel -opt-prefetch
-ansi-alias

C++ benchmarks:

-xAVX -ipo -O3 -no-prec-div -static -opt-prefetch -ansi-alias

Fortran benchmarks:

-xAVX -ipo -O3 -no-prec-div -static -parallel -opt-prefetch

Benchmarks using both Fortran and C:

-xAVX -ipo -O3 -no-prec-div -static -parallel -opt-prefetch
-ansi-alias

Peak Compiler Invocation

C benchmarks:

icc -m64

C++ benchmarks:

icpc -m64

Fortran benchmarks:

ifort -m64

Benchmarks using both Fortran and C:

icc -m64 ifort -m64

Peak Portability Flags

Same as Base Portability Flags

Peak Optimization Flags

C benchmarks:

433.milc: -xAVX(pass 2) -prof-gen(pass 1) -ipo(pass 2) -O3(pass 2)
-no-prec-div(pass 2) -prof-use(pass 2) -static -auto-ilp32
-ansi-alias

470.lbm: basepeak = yes

482.sphinx3: -xAVX -ipo -O3 -no-prec-div -unroll2 -ansi-alias
-parallel

Continued on next page



SPEC CFP2006 Result

Copyright 2006-2014 Standard Performance Evaluation Corporation

Dell Inc.

SPECfp2006 = 108

PowerEdge M620 (Intel Xeon E5-2667 v2, 3.30 GHz)

SPECfp_base2006 = 104

CPU2006 license: 55

Test date: Sep-2013

Test sponsor: Dell Inc.

Hardware Availability: Sep-2013

Tested by: Dell Inc.

Software Availability: Sep-2013

Peak Optimization Flags (Continued)

C++ benchmarks:

444.namd: -xAVX(pass 2) -prof-gen(pass 1) -ipo(pass 2) -O3(pass 2)
-no-prec-div(pass 2) -prof-use(pass 2) -fno-alias
-auto-ilp32

447.dealIII: basepeak = yes

450.soplex: basepeak = yes

453.povray: -xAVX(pass 2) -prof-gen(pass 1) -ipo(pass 2) -O3(pass 2)
-no-prec-div(pass 2) -prof-use(pass 2) -unroll4 -ansi-alias

Fortran benchmarks:

410.bwaves: basepeak = yes

416.gamess: -xAVX(pass 2) -prof-gen(pass 1) -ipo(pass 2) -O3(pass 2)
-no-prec-div(pass 2) -prof-use(pass 2) -unroll2
-inline-level=0 -scalar-rep- -static

434.zeusmp: basepeak = yes

437.leslie3d: basepeak = yes

459.GemsFDTD: -xAVX(pass 2) -prof-gen(pass 1) -ipo(pass 2) -O3(pass 2)
-no-prec-div(pass 2) -prof-use(pass 2) -unroll2
-inline-level=0 -opt-prefetch -parallel

465.tonto: -xAVX(pass 2) -prof-gen(pass 1) -ipo(pass 2) -O3(pass 2)
-no-prec-div(pass 2) -prof-use(pass 2) -inline-calloc
-opt-malloc-options=3 -auto -unroll4

Benchmarks using both Fortran and C:

435.gromacs: basepeak = yes

436.cactusADM: basepeak = yes

454.calculix: -xAVX -ipo -O3 -no-prec-div -auto-ilp32 -ansi-alias

481.wrf: basepeak = yes

The flags files that were used to format this result can be browsed at

<http://www.spec.org/cpu2006/flags/Intel-ic14.0-official-linux64.20140128.html>

<http://www.spec.org/cpu2006/flags/Dell-Platform-Settings-V1.2-revB.html>

You can also download the XML flags sources by saving the following links:

<http://www.spec.org/cpu2006/flags/Intel-ic14.0-official-linux64.20140128.xml>

<http://www.spec.org/cpu2006/flags/Dell-Platform-Settings-V1.2-revB.xml>



SPEC CFP2006 Result

Copyright 2006-2014 Standard Performance Evaluation Corporation

Dell Inc.

SPECfp2006 = 108

PowerEdge M620 (Intel Xeon E5-2667 v2, 3.30 GHz)

SPECfp_base2006 = 104

CPU2006 license: 55

Test date: Sep-2013

Test sponsor: Dell Inc.

Hardware Availability: Sep-2013

Tested by: Dell Inc.

Software Availability: Sep-2013

SPEC and SPECfp are registered trademarks of the Standard Performance Evaluation Corporation. All other brand and product names appearing in this result are trademarks or registered trademarks of their respective holders.

For questions about this result, please contact the tester.
For other inquiries, please contact webmaster@spec.org.

Tested with SPEC CPU2006 v1.2.
Report generated on Thu Jul 24 19:21:36 2014 by SPEC CPU2006 PS/PDF formatter v6932.
Originally published on 5 November 2013.