



# SPEC<sup>®</sup> CFP2006 Result

Copyright 2006-2014 Standard Performance Evaluation Corporation

Dell Inc.

SPECfp<sup>®</sup>2006 = 103

PowerEdge R620 (Intel Xeon E5-2643 v2, 3.50 GHz)

SPECfp\_base2006 = 98.1

CPU2006 license: 55

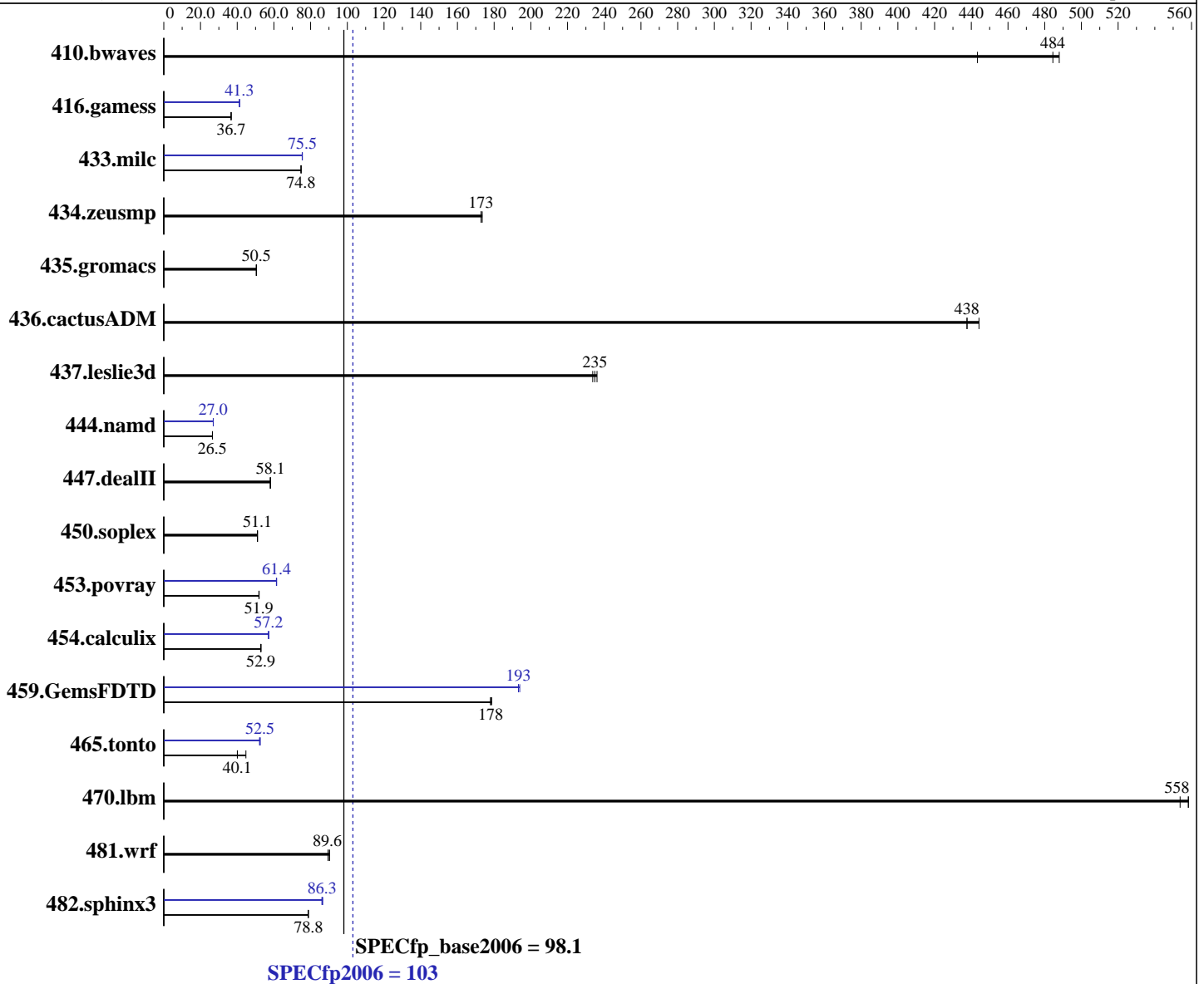
Test date: Sep-2013

Test sponsor: Dell Inc.

Hardware Availability: Sep-2013

Tested by: Dell Inc.

Software Availability: Sep-2013



## Hardware

CPU Name: Intel Xeon E5-2643 v2  
 CPU Characteristics: Intel Turbo Boost Technology up to 3.80 GHz  
 CPU MHz: 3500  
 FPU: Integrated  
 CPU(s) enabled: 12 cores, 2 chips, 6 cores/chip  
 CPU(s) orderable: 1,2 chip  
 Primary Cache: 32 KB I + 32 KB D on chip per core  
 Secondary Cache: 256 KB I+D on chip per core

Continued on next page

## Software

Operating System: SUSE Linux Enterprise Server 11 SP3 (x86\_64) 3.0.76-0.11-default  
 Compiler: C/C++: Version 14.0.0.080 of Intel C++ Studio XE for Linux;  
 Fortran: Version 14.0.0.080 of Intel Fortran Studio XE for Linux  
 Auto Parallel: Yes  
 File System: ext2  
 System State: Run level 3 (multi-user)

Continued on next page



# SPEC CFP2006 Result

Copyright 2006-2014 Standard Performance Evaluation Corporation

Dell Inc.

SPECfp2006 = 103

PowerEdge R620 (Intel Xeon E5-2643 v2, 3.50 GHz)

SPECfp\_base2006 = 98.1

CPU2006 license: 55

Test date: Sep-2013

Test sponsor: Dell Inc.

Hardware Availability: Sep-2013

Tested by: Dell Inc.

Software Availability: Sep-2013

L3 Cache: 25 MB I+D on chip per chip  
 Other Cache: None  
 Memory: 256 GB (16 x 16 GB 2Rx4 PC3-14900R-13, ECC)  
 Disk Subsystem: 1 x 300 GB 15000 RPM SAS  
 Other Hardware: None

Base Pointers: 64-bit  
 Peak Pointers: 32/64-bit  
 Other Software: None

## Results Table

Benchmark	Base						Peak					
	Seconds	Ratio	Seconds	Ratio	Seconds	Ratio	Seconds	Ratio	Seconds	Ratio	Seconds	Ratio
410.bwaves	30.7	443	<u>28.1</u>	<u>484</u>	27.9	488	30.7	443	<u>28.1</u>	<u>484</u>	27.9	488
416.gamess	534	36.7	<u>534</u>	<u>36.7</u>	534	36.7	<u>474</u>	<u>41.3</u>	474	41.3	475	41.2
433.milc	123	74.8	<u>123</u>	<u>74.8</u>	123	74.8	122	75.5	<u>122</u>	<u>75.5</u>	122	75.4
434.zeusmp	<u>52.6</u>	<u>173</u>	52.6	173	52.4	174	<u>52.6</u>	<u>173</u>	52.6	173	52.4	174
435.gromacs	141	50.5	142	50.4	<u>141</u>	<u>50.5</u>	141	50.5	142	50.4	<u>141</u>	<u>50.5</u>
436.cactusADM	27.3	438	<u>27.3</u>	<u>438</u>	26.9	444	27.3	438	<u>27.3</u>	<u>438</u>	26.9	444
437.leslie3d	40.2	234	39.8	236	<u>40.0</u>	<u>235</u>	40.2	234	39.8	236	<u>40.0</u>	<u>235</u>
444.namd	302	26.5	303	26.5	<u>303</u>	<u>26.5</u>	<u>298</u>	<u>27.0</u>	297	27.0	298	26.9
447.dealII	197	58.1	197	58.1	<u>197</u>	<u>58.1</u>	197	58.1	197	58.1	<u>197</u>	<u>58.1</u>
450.soplex	163	51.1	164	51.0	<u>163</u>	<u>51.1</u>	163	51.1	164	51.0	<u>163</u>	<u>51.1</u>
453.povray	102	51.9	103	51.8	<u>103</u>	<u>51.9</u>	<u>86.6</u>	<u>61.4</u>	86.7	61.3	86.5	61.5
454.calculix	<u>156</u>	<u>52.9</u>	156	53.0	156	52.8	145	57.0	144	57.2	<u>144</u>	<u>57.2</u>
459.GemsFDTD	59.4	179	59.6	178	<u>59.6</u>	<u>178</u>	54.7	194	<u>54.9</u>	<u>193</u>	54.9	193
465.tonto	<u>246</u>	<u>40.1</u>	246	40.1	220	44.7	189	52.1	187	52.5	<u>188</u>	<u>52.5</u>
470.lbm	24.6	558	<u>24.6</u>	<u>558</u>	24.8	554	24.6	558	<u>24.6</u>	<u>558</u>	24.8	554
481.wrf	124	90.4	<u>125</u>	<u>89.6</u>	125	89.5	124	90.4	<u>125</u>	<u>89.6</u>	125	89.5
482.sphinx3	247	78.8	<u>247</u>	<u>78.8</u>	248	78.6	226	86.1	<u>226</u>	<u>86.3</u>	225	86.6

Results appear in the order in which they were run. Bold underlined text indicates a median measurement.

## Operating System Notes

Stack size set to unlimited using "ulimit -s unlimited"

## Platform Notes

BIOS settings:  
 Virtualization Technology disabled  
 Execute Disable disabled  
 Logical Processor disabled  
 System Profile set to Performance  
 Sysinfo program /root/cpu2006.1.2.ic13/config/sysinfo.rev6818  
 \$Rev: 6818 \$ \$Date:: 2012-07-17 #\$ e86d102572650a6e4d596a3cee98f191  
 running on linux Sun Sep 22 13:08:02 2013

This section contains SUT (System Under Test) info as seen by  
Continued on next page



# SPEC CFP2006 Result

Copyright 2006-2014 Standard Performance Evaluation Corporation

Dell Inc.

SPECfp2006 = 103

PowerEdge R620 (Intel Xeon E5-2643 v2, 3.50 GHz)

SPECfp\_base2006 = 98.1

CPU2006 license: 55

Test date: Sep-2013

Test sponsor: Dell Inc.

Hardware Availability: Sep-2013

Tested by: Dell Inc.

Software Availability: Sep-2013

## Platform Notes (Continued)

some common utilities. To remove or add to this section, see:  
<http://www.spec.org/cpu2006/Docs/config.html#sysinfo>

```

From /proc/cpuinfo
  model name : Intel(R) Xeon(R) CPU E5-2643 v2 @ 3.50GHz
    2 "physical id"s (chips)
    12 "processors"
  cores, siblings (Caution: counting these is hw and system dependent. The
  following excerpts from /proc/cpuinfo might not be reliable. Use with
  caution.)
    cpu cores : 6
    siblings  : 6
    physical 0: cores 2 3 4 8 9 10
    physical 1: cores 2 3 4 8 9 10
  cache size : 25600 KB

```

```

From /proc/meminfo
MemTotal:      264634596 kB
HugePages_Total:    0
Hugepagesize:   2048 kB

```

```

/usr/bin/lsb_release -d
SUSE Linux Enterprise Server 11 (x86_64)

```

```

From /etc/*release* /etc/*version*
SuSE-release:
SUSE Linux Enterprise Server 11 (x86_64)
VERSION = 11
PATCHLEVEL = 3

```

```

uname -a:
Linux linux 3.0.76-0.11-default #1 SMP Fri Jun 14 08:21:43 UTC 2013 (ccab990)
x86_64 x86_64 x86_64 GNU/Linux

```

run-level 3 Sep 22 08:06 last=S

```

SPEC is set to: /root/cpu2006.1.2.ic13
Filesystem      Type  Size  Used Avail Use% Mounted on
/dev/sda2       ext2  267G   56G  211G  21% /

```

```

Additional information from dmidecode:
BIOS Dell Inc. 2.0.19 08/29/2013
Memory:
6x 00AD00B300AD HMT42GR7MFR4C-RD 16 GB 1866 MHz
10x 00AD04B300AD HMT42GR7AFR4C-RD 16 GB 1866 MHz

```

(End of data from sysinfo program)



# SPEC CFP2006 Result

Copyright 2006-2014 Standard Performance Evaluation Corporation

Dell Inc.

SPECfp2006 = 103

PowerEdge R620 (Intel Xeon E5-2643 v2, 3.50 GHz)

SPECfp\_base2006 = 98.1

CPU2006 license: 55

Test date: Sep-2013

Test sponsor: Dell Inc.

Hardware Availability: Sep-2013

Tested by: Dell Inc.

Software Availability: Sep-2013

## General Notes

Environment variables set by runspec before the start of the run:

```
LD_LIBRARY_PATH = "/root/cpu2006.1.2.ic13/libs/32:/root/cpu2006.1.2.ic13/libs/64:/root/cpu2006.1.2.ic13/sh"
OMP_NUM_THREADS = "12"
```

Binaries compiled on a system with 1x Core i7-860 CPU + 8GB memory using RHEL5.5

Transparent Huge Pages enabled with:

```
echo always > /sys/kernel/mm/transparent_hugepage/enabled
```

Filesystem page cache cleared with:

```
echo 1> /proc/sys/vm/drop_caches
```

## Base Compiler Invocation

C benchmarks:

```
icc -m64
```

C++ benchmarks:

```
icpc -m64
```

Fortran benchmarks:

```
ifort -m64
```

Benchmarks using both Fortran and C:

```
icc -m64 ifort -m64
```

## Base Portability Flags

```
410.bwaves: -DSPEC_CPU_LP64
416.gamess: -DSPEC_CPU_LP64
433.milc: -DSPEC_CPU_LP64
434.zeusmp: -DSPEC_CPU_LP64
435.gromacs: -DSPEC_CPU_LP64 -nofor_main
436.cactusADM: -DSPEC_CPU_LP64 -nofor_main
437.leslie3d: -DSPEC_CPU_LP64
444.namd: -DSPEC_CPU_LP64
447.dealII: -DSPEC_CPU_LP64
450.soplex: -DSPEC_CPU_LP64
453.povray: -DSPEC_CPU_LP64
454.calculix: -DSPEC_CPU_LP64 -nofor_main
459.GemsFDTD: -DSPEC_CPU_LP64
465.tonto: -DSPEC_CPU_LP64
470.lbm: -DSPEC_CPU_LP64
481.wrf: -DSPEC_CPU_LP64 -DSPEC_CPU_CASE_FLAG -DSPEC_CPU_LINUX
482.sphinx3: -DSPEC_CPU_LP64
```



# SPEC CFP2006 Result

Copyright 2006-2014 Standard Performance Evaluation Corporation

Dell Inc.

SPECfp2006 = 103

PowerEdge R620 (Intel Xeon E5-2643 v2, 3.50 GHz)

SPECfp\_base2006 = 98.1

CPU2006 license: 55

Test date: Sep-2013

Test sponsor: Dell Inc.

Hardware Availability: Sep-2013

Tested by: Dell Inc.

Software Availability: Sep-2013

## Base Optimization Flags

C benchmarks:

-xAVX -ipo -O3 -no-prec-div -static -parallel -opt-prefetch  
-ansi-alias

C++ benchmarks:

-xAVX -ipo -O3 -no-prec-div -static -opt-prefetch -ansi-alias

Fortran benchmarks:

-xAVX -ipo -O3 -no-prec-div -static -parallel -opt-prefetch

Benchmarks using both Fortran and C:

-xAVX -ipo -O3 -no-prec-div -static -parallel -opt-prefetch  
-ansi-alias

## Peak Compiler Invocation

C benchmarks:

icc -m64

C++ benchmarks:

icpc -m64

Fortran benchmarks:

ifort -m64

Benchmarks using both Fortran and C:

icc -m64 ifort -m64

## Peak Portability Flags

Same as Base Portability Flags

## Peak Optimization Flags

C benchmarks:

433.milc: -xAVX(pass 2) -prof-gen(pass 1) -ipo(pass 2) -O3(pass 2)  
-no-prec-div(pass 2) -prof-use(pass 2) -static -auto-ilp32  
-ansi-alias

470.lbm: basepeak = yes

482.sphinx3: -xAVX -ipo -O3 -no-prec-div -unroll2 -ansi-alias  
-parallel

Continued on next page



# SPEC CFP2006 Result

Copyright 2006-2014 Standard Performance Evaluation Corporation

Dell Inc.

SPECfp2006 = 103

PowerEdge R620 (Intel Xeon E5-2643 v2, 3.50 GHz)

SPECfp\_base2006 = 98.1

CPU2006 license: 55

Test date: Sep-2013

Test sponsor: Dell Inc.

Hardware Availability: Sep-2013

Tested by: Dell Inc.

Software Availability: Sep-2013

## Peak Optimization Flags (Continued)

C++ benchmarks:

444.namd: -xAVX(pass 2) -prof-gen(pass 1) -ipo(pass 2) -O3(pass 2)  
-no-prec-div(pass 2) -prof-use(pass 2) -fno-alias  
-auto-ilp32

447.dealIII: basepeak = yes

450.soplex: basepeak = yes

453.povray: -xAVX(pass 2) -prof-gen(pass 1) -ipo(pass 2) -O3(pass 2)  
-no-prec-div(pass 2) -prof-use(pass 2) -unroll4 -ansi-alias

Fortran benchmarks:

410.bwaves: basepeak = yes

416.gamess: -xAVX(pass 2) -prof-gen(pass 1) -ipo(pass 2) -O3(pass 2)  
-no-prec-div(pass 2) -prof-use(pass 2) -unroll2  
-inline-level=0 -scalar-rep- -static

434.zeusmp: basepeak = yes

437.leslie3d: basepeak = yes

459.GemsFDTD: -xAVX(pass 2) -prof-gen(pass 1) -ipo(pass 2) -O3(pass 2)  
-no-prec-div(pass 2) -prof-use(pass 2) -unroll2  
-inline-level=0 -opt-prefetch -parallel

465.tonto: -xAVX(pass 2) -prof-gen(pass 1) -ipo(pass 2) -O3(pass 2)  
-no-prec-div(pass 2) -prof-use(pass 2) -inline-calloc  
-opt-malloc-options=3 -auto -unroll4

Benchmarks using both Fortran and C:

435.gromacs: basepeak = yes

436.cactusADM: basepeak = yes

454.calculix: -xAVX -ipo -O3 -no-prec-div -auto-ilp32 -ansi-alias

481.wrf: basepeak = yes

The flags files that were used to format this result can be browsed at

<http://www.spec.org/cpu2006/flags/Intel-ic14.0-official-linux64.20140128.html>

<http://www.spec.org/cpu2006/flags/Dell-Platform-Settings-V1.2-revB.html>

You can also download the XML flags sources by saving the following links:

<http://www.spec.org/cpu2006/flags/Intel-ic14.0-official-linux64.20140128.xml>

<http://www.spec.org/cpu2006/flags/Dell-Platform-Settings-V1.2-revB.xml>



# SPEC CFP2006 Result

Copyright 2006-2014 Standard Performance Evaluation Corporation

Dell Inc.

SPECfp2006 = 103

PowerEdge R620 (Intel Xeon E5-2643 v2, 3.50 GHz)

SPECfp\_base2006 = 98.1

CPU2006 license: 55

Test date: Sep-2013

Test sponsor: Dell Inc.

Hardware Availability: Sep-2013

Tested by: Dell Inc.

Software Availability: Sep-2013

SPEC and SPECfp are registered trademarks of the Standard Performance Evaluation Corporation. All other brand and product names appearing in this result are trademarks or registered trademarks of their respective holders.

For questions about this result, please contact the tester.  
For other inquiries, please contact [webmaster@spec.org](mailto:webmaster@spec.org).

Tested with SPEC CPU2006 v1.2.  
Report generated on Thu Jul 24 18:51:40 2014 by SPEC CPU2006 PS/PDF formatter v6932.  
Originally published on 22 October 2013.