

**SONIC™  
TEAM**



**SEGA®**



**INSTRUCTION BOOKLET**

**WARNING: PLEASE CAREFULLY READ THE PRECAUTIONS BOOKLET INCLUDED WITH THIS PRODUCT BEFORE USING YOUR NINTENDO® HARDWARE SYSTEM, GAME DISC OR ACCESSORY. THIS BOOKLET CONTAINS IMPORTANT SAFETY INFORMATION.**

**IMPORTANT SAFETY INFORMATION: READ THE FOLLOWING WARNINGS BEFORE YOU OR YOUR CHILD PLAY VIDEO GAMES**

**⚠ WARNING - Seizures**

- Some people (about 1 in 4000) may have seizures or blackouts triggered by light flashes, such as while watching TV or playing video games, even if they have never had a seizure before.
- Anyone who has had a seizure, loss of awareness, or other symptom linked to an epileptic condition should consult a doctor before playing a video game.
- Parents should watch when their children play video games. Stop playing and consult a doctor if you or your child have any of the following symptoms:

**Convulsions**

**Eye or muscle twitching**

**Loss of awareness**

**Altered vision**

**Involuntary movements**

**Disorientation**

To reduce the likelihood of a seizure when playing video games:

1. Sit or stand as far from the screen as possible.
2. Play video games on the smallest available television screen.
3. Do not play if you are tired or need sleep.
4. Play in a well-lit room.
5. Take a 10 to 15 minute break every hour.

**⚠ WARNING - Repetitive Motion Injuries**

Playing video games can make your muscles, joints or skin hurt after a few hours. Follow these instructions to avoid problems such as Tendinitis, Carpal Tunnel Syndrome or skin irritation:

- Take a 10 to 15 minute break every hour, even if you don't think you need it.
- If your hands, wrists or arms become tired or sore while playing, stop and rest them for several hours before playing again.
- If you continue to have sore hands, wrists or arms during or after play, stop playing and see a doctor.

## **⚠ WARNING - Electric Shock**

To avoid electric shock when you use this system:

- Use only the AC adapter that comes with your system.
- Do not use the AC adapter if it has damaged, split or broken cords or wires.
- Make sure that the AC adapter cord is fully inserted into the wall outlet or extension cord.
- Always carefully disconnect all plugs by pulling on the plug and not on the cord. Make sure the Nintendo GameCube power switch is turned OFF before removing the AC adapter cord from an outlet.

## **⚠ CAUTION - Motion Sickness**

Playing video games can cause motion sickness. If you or your child feel dizzy or nauseous when playing video games with this system, stop playing and rest. Do not drive or engage in other demanding activity until you feel better.

## **⚠ CAUTION - Laser Device**

The Nintendo GameCube is a Class I laser product. Do not attempt to disassemble the Nintendo GameCube. Refer servicing to qualified personnel only.  
Caution - Use of controls or adjustments or procedures other than those specified herein may result in hazardous radiation exposure.

---

### **CONTROLLER NEUTRAL POSITION RESET**

If the L or R Buttons are pressed or the Control Stick or C Stick are moved out of neutral position when the power is turned ON, those positions will be set as the neutral position, causing incorrect game control during game play.

To reset the controller, release all buttons and sticks to allow them to return to the correct neutral position, then hold down the X, Y and START/PAUSE Buttons simultaneously for 3 seconds.



*This official seal is your assurance that Nintendo has reviewed this product and that it has met our standards for excellence in workmanship, reliability and entertainment value. Always look for this seal when buying games and accessories to ensure complete compatibility with your Nintendo product.*

All Nintendo products are licensed by sale for use only with other authorized products bearing the Official Nintendo Seal of Quality.®



2 Player  
Simultaneous

**THIS GAME SUPPORTS  
SIMULTANEOUS GAME PLAY  
WITH TWO PLAYERS AND  
CONTROLLERS.**



Memory  
Card

**THIS GAME REQUIRES A  
MEMORY CARD FOR SAVING  
GAME PROGRESS, SETTINGS  
OR STATISTICS.**



Game Boy  
Advance compatible

**THIS GAME IS COMPATIBLE  
WITH THE GAME BOY  
ADVANCE PORTABLE VIDEO  
GAME SYSTEM.**



THIS PRODUCT HAS BEEN RATED BY THE ENTERTAINMENT SOFTWARE RATING BOARD. FOR INFORMATION ABOUT THE ESRB RATING, OR TO COMMENT ABOUT THE APPROPRIATENESS OF THE RATING, PLEASE CONTACT THE ESRB AT 1-800-771-3772, OR VISIT [WWW.ESRB.ORG](http://WWW.ESRB.ORG).

**EVERYONE**  
**Violence Mild Lyrics**

LICENSED BY



NINTENDO, NINTENDO GAMECUBE AND THE OFFICIAL SEAL ARE TRADEMARKS OF NINTENDO.  
© 2001 NINTENDO. ALL RIGHTS RESERVED.

Thank you for purchasing Sonic Adventure 2 Battle. Please note that this software is designed only for use with Nintendo GameCube™. Be sure to read this instruction manual thoroughly before you start playing.



## CONTENTS

PROLOGUE .....	4	*TREASURE HUNT RACE .....	43
CHARACTERS .....	6	*SHOOTING BATTLE .....	44
*ACTIONS .....	12	*RANDOM BATTLE .....	44
2P BATTLE CHARACTERS .....	18	*CHAO RACE .....	45
BASIC CONTROLS .....	24	*CHAO KARATE .....	46
STARTING THE GAME .....	26	*KART RACE .....	47
1P PLAY MODE .....	28	EXTRA .....	48
*STORY .....	28	OPTIONS .....	49
*STAGE SELECT .....	36	ABOUT "CHAO" .....	50
*KART RACE .....	37	CHAO TRANSPORTER .....	62
2P BATTLE MODE .....	38	TINY CHAO GARDEN .....	63
*ACTION RACE BATTLE .....	42		

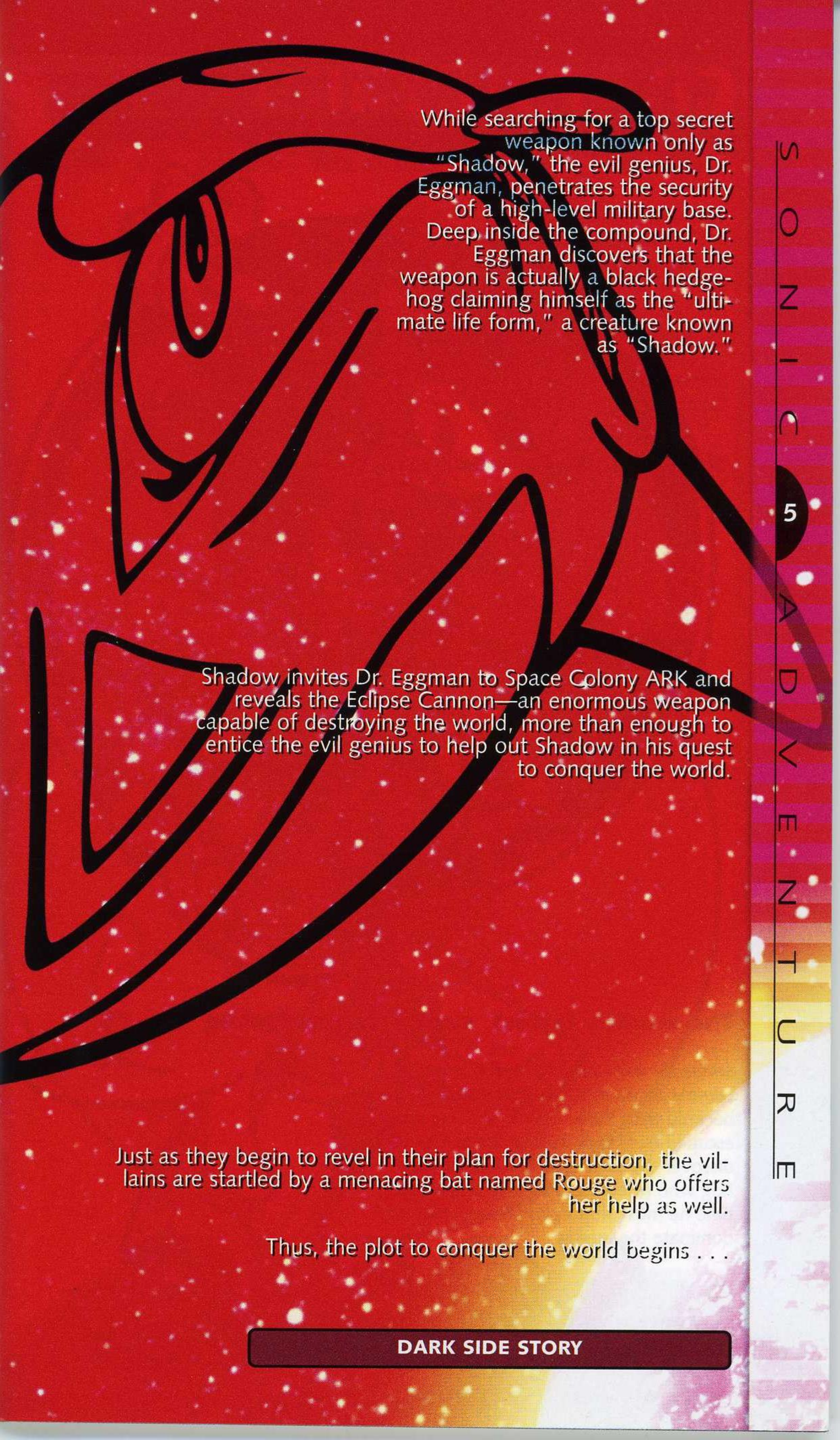
# PROLOGUE

## HERO SIDE STORY

It is just another ordinary day . . . until Sonic, hero of justice, is accosted by a secret military force code-named G.U.N.

Escaping the confines of a high-security helicopter, Sonic leaps down into the city streets in an effort to flee from his captors. Suddenly, a mysterious black hedgehog appears in front of him, grasping a Chaos Emerald in his hands. Meanwhile, across the globe, unexplained incidents occur following the declaration of world conquest by Eggman himself.

Once aware of the connection between Shadow and Dr. Eggman, Sonic begins his quest to stop their evil plan, helped along the way by his old friends: Tails and Knuckles.



While searching for a top secret weapon known only as "Shadow," the evil genius, Dr. Eggman, penetrates the security of a high-level military base. Deep inside the compound, Dr. Eggman discovers that the weapon is actually a black hedgehog claiming himself as the "ultimate life form," a creature known as "Shadow."

Shadow invites Dr. Eggman to Space Colony ARK and reveals the Eclipse Cannon—an enormous weapon capable of destroying the world, more than enough to entice the evil genius to help out Shadow in his quest to conquer the world.

Just as they begin to revel in their plan for destruction, the villains are startled by a menacing bat named Rouge who offers her help as well.

Thus, the plot to conquer the world begins . . .

**DARK SIDE STORY**

# CHARACTERS



## **The world's fastest, supersonic hedgehog**

Somehow our hero, Sonic, has been mistakenly accused by the military troops because they think Sonic is the one who escaped from their facility. Sonic tries to discover the secrets of this black hedgehog who resembles him and at the same time he must stop Eggman's evil plan to dominate the world.

**SONIC**  
**SONIC THE HEDGEHOG**



# SHADOW THE HEDGEHOG

# SHADOW

Shadow is the ultimate life form created by Professor Gerald Robotnik. Shadow has the ability to use his special power, "Chaos Control." Shadow is able to harness the power of the Chaos Emerald to warp time and space. After telling Eggman about the Eclipse Cannon, Shadow encourages Dr. Eggman to join up and help conquer the world. But what is Shadow's real motive?

**A black hedgehog who resembles Sonic**





## A friendly boy fox with two tails

His mechanical ability to build machines is equal to that of Dr. Eggman. This time, he plays an active role using his new machine the "Cyclone." His ability to build machines is invaluable to Sonic.

# TAILS

**MILES "TAILS" PROWER**

# Dr. EGGMAN

Also known as Dr. Robotnik, Dr. Eggman is an evil scientist with an IQ of 300. A renowned authority on robotics, Eggman joins forces with Shadow and Rouge in a plot to conquer the world. Once he has collected all the Chaos Emeralds, he plans to take care of his lifelong rival, Sonic, once and for all.

**An evil self-proclaimed scientist who disturbs Sonic and his friends**





### Powerful and wild echidna

The guardian of the Master Emerald, Knuckles takes his residence on the floating Angel Island. He is known as a treasure hunter, but is a skilled martial artist as well. Ever since the Master Emerald was shattered, Knuckles has made it his mission to collect each and every shattered piece.

# KNUCKLES

## KNUCKLES THE ECHIDNA

# ROUGE THE BAT

# ROUGE

As a hunter who devotes her life to the pursuit of jewels, Rouge is determined to make herself rich. She is passionate about her work, and once she's set her sights on a new treasure, she stops at nothing until she gets it. In order to collect the many pieces of the Master Emerald, she offers to help Shadow and Dr. Eggman—but her true identity remains a mystery to them both.

**A mysterious treasure hunter who loves jewels**



# ACTIONS



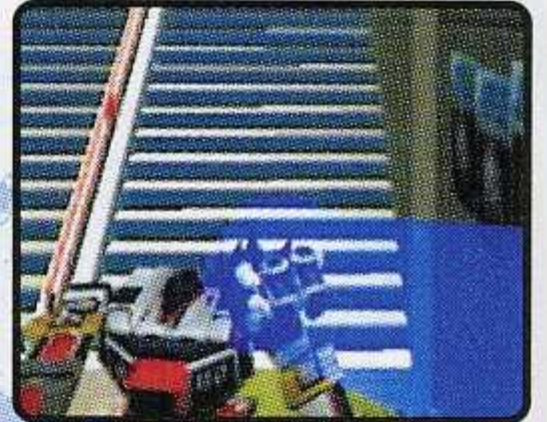
## ACTIONS COMMON TO SONIC & SHADOW



### HOMING ATTACK

#### A Button while airborne

You can attack nearby enemies, and even attack a series of enemies continuously.



### SOMERSAULT

#### B Button

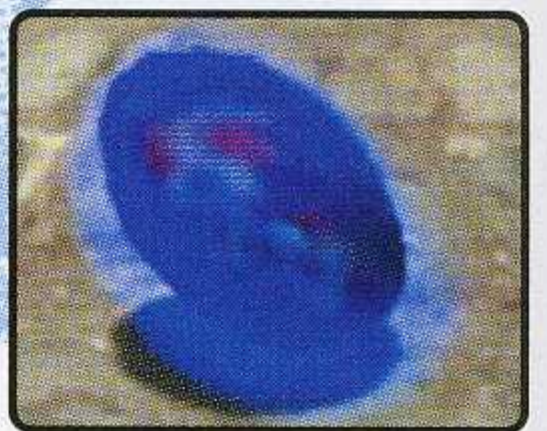
You can break wooden boxes or squeeze through very low or narrow gaps.



### SPIN DASH

#### Hold B Button, then release

You can build up your momentum and start rolling at supersonic speed. Use with extreme care.



### GRINDING

#### Jump onto the rail

You can jump on the rail and grind. While grinding, you can jump (A Button) or crouch to accelerate (B Button). Use the Control Stick to balance yourself.



**SONIC****LEVEL UP ITEMS FOR SONIC****LIGHT SHOES**

Enable Sonic to perform the Light Dash to move at light speed along a path of rings. Press the B Button in front of a path of rings.

**FLAME RING**

Enables Sonic to perform the Fire Somersault. With this item, Sonic can destroy iron containers.

**SHADOW****LEVEL UP ITEMS FOR SHADOW****AIR SHOES**

Enable Shadow to perform the Light Dash to move at light speed along a path of rings. Press the B Button in front of a path of rings.

**ANCIENT LIGHT**

Enables Shadow to perform the Light Attack to destroy numerous enemies at light speed. Use the Control Stick and hold the B Button, then release to fire.

\*These are only a few examples of Level Up Items you will find throughout the game, so make sure to find them all.



## ACTIONS COMMON TO TAILS & Dr. EGGMAN



### VOLKAN CANNON

#### B Button

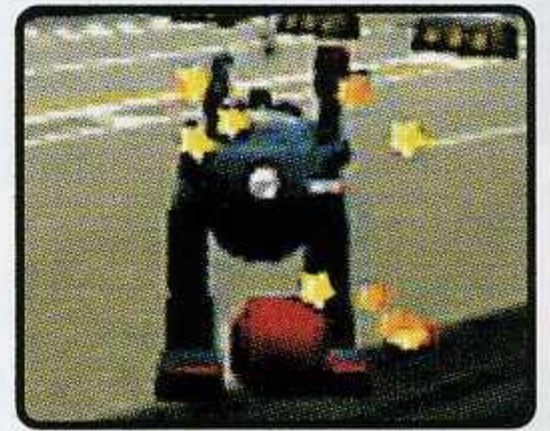
A mini-gun that you fire by pressing the B Button. You can destroy items such as wooden boxes.



### PROPELLER PUNCH/PUNCH

#### B Button near the enemy

You can use this weapon (Propeller Punch for Tails; Punch for Dr. Eggman) only when an enemy is in front of you. Utilize this in 2P versus play to blow your opponent away!



### LOCK-ON

#### Hold B Button

Hold the B Button to display a laser sight. Then use the Control Stick to lock onto the enemy. You can even lock onto multiple enemies.



### LOCK-ON MISSILE

#### Release B Button

While the targets are locked on, release to fire missiles. Destroy multiple enemies for even more points.





## TAILS

### LEVEL UP ITEMS FOR TAILS

#### BOOSTER

Hold A Button while jumping.  
Enables Tails to hover and descend slowly.



#### BAZOOKA

Powers up the Volkan Cannon. Now you can destroy iron containers.



## DR. EGGMAN

### LEVEL UP ITEMS FOR Dr. EGGMAN

#### LASER BLASTER

Powers up Dr. Eggman's Lock-on missile. The spread impact from the explosion destroys enemies in a wide area.



#### PROTECTION ARMOR

Armor parts that enhance the body strength of Dr. Eggman's Egg Walker. The health gauge will also increase.



\*These are only a few examples of Level Up Items you will find throughout the game, so make sure to find them all.





## ACTIONS COMMON TO KNUCKLES & ROUGE



### GLIDE

**Hold A Button while airborne**

You can glide and descend slowly.



### CLIMB WALLS

While gliding, bump into the wall and grab onto it. In this position, use the Control Stick to move around.



### PUNCH/KICK ATTACK

**B Button**

You can break a wooden box or defeat the enemy in front of you. Press the B Button continuously to make 3 different types of punches (kicks for Rouge).



### DIG

**Press Y Button, then B Button**

You can dig into the ground to uncover hidden items such as Emeralds. While sticking to a wall, you can dig the wall by simply pressing the B Button. You must obtain a specific Level-up item in order to be able to perform this action.



### SWIM

**B Button to dive, A Button to surface**

You can swim underwater. Don't forget to come up to the surface, as you cannot breathe underwater.



### DRILL CLAW/DRILL DRIVE

**Press A Button, then B Button**

Press the B Button while airborne to attack enemies directly beneath you. If you already possess a certain Level-up item, you can also dig a hole upon contact with the ground.



# KNUCKLES

## LEVEL UP ITEMS FOR KNUCKLES

### SHOVEL CLAW



Enables Knuckles to dig into the ground and walls. Press the B Button while airborne or climbing on walls, or select "Dig" in the Action Window.

### AIR NECKLACE



A necklace-style oxygen bottle. This item saves you the trouble of coming up to the surface of the water to breathe.

# ROUGE

## LEVEL UP ITEMS FOR ROUGE



### PICK NAILS



Enables Rouge to dig into the ground and walls. Press the B Button while airborne or climbing on walls, or select "Dig" in the Action Window.

### TREASURE SCOPE



Enables Rouge to see new items. Press the B Button to put it on and jump to take it off.

\*These are only a few examples of Level Up Items you will find throughout the game, so make sure to find them all.

# 2P BATTLE CHARACTERS

## AMY ROSE

An energetic girl in love with Sonic. Amy loves to chase after Sonic wherever he goes.

While not as good at running or jumping compared to other characters, Amy can perform a special attack with fewer rings, thus hindering her opponents by firing attacks continuously.



RINGS	SPECIAL ATTACK	EFFECT
10	Speed Up	Running speed goes up for 10 seconds
20	Storming Heart	Delivers an attack to a distant opponent
30	Amy Flash	Opponent cannot move for 20 seconds

Actions of each character are the same as the ones of Sonic & Shadow except for the Spin Dash as well as the Light Dash (For details, see P.12).

# METAL SONIC

The strongest robot invented by Dr. Eggman in order to defeat Sonic. Metal Sonic and Sonic have a strong rivalry.



Similar to Sonic in abilities, Metal Sonic is capable of faster bursts of speed. Press the B Button continuously to invoke "Black Shield" which protects Metal Sonic from damage.

Note: Metal Sonic cannot use brakes very easily and he has no ability for special attacks.

**To invoke "Black Shield," hold B Button down.**

Actions of each character are the same as the ones of Sonic & Shadow except for the Spin Dash as well as the Light Dash (For details, see P.12).

# CHAO WALKER

# CHAO WALKER

Styled after Chao and created by Tails, the Chao Walker is one of the quickest characters in the game.



With its speedy moves, Chao Walker is able to dodge an opponent's attack as well as deliver its own. Chao Walker can perform special attacks with fewer rings collected as compared to other characters. However, Chao Walker has very weak attack power and defense.

RINGS	SPECIAL ATTACK	EFFECT
15	Booming Missile	Fires many Homing Missiles simultaneously
30	Rumble Launcher	Bombing attack by firing multiple rockets upwards
45	Zap Laser	Fires super-size laser from the front end of the machine

Actions of each character are the same as the ones of Tails & Dr. Eggman (For details, see P.14).

# DARK CHAO WALKER

A very powerful battle machine created by Dr. Eggman for Dark Chao.



Dark Chao Walker is capable of delivering heavy damage attacks and has great defensive powers. Dark Chao Walker can also perform a high-powered attack. But Dark Chao Walker moves very slowly and the firepower of its Volkan Cannon isn't very effective.

RINGS	SPECIAL ATTACK	EFFECT
20	Crazy Rush	Fires powered-up Homing Missiles heavily and rapidly
40	Hell Bomber	Fires powerful rocket missiles upwards for heavy bombing
60	Dark Finish	Fires a super powerful and thick dark laser from the front end of the machine

Actions of each character are the same as the ones of Tails & Dr. Eggman (For details, see P.14).

# TIKAL

A girl with mystical power, who comes from the same ancient tribe as Knuckles.



Tikal has quick moves and can find Emeralds quickly, but she does not have a very good sense for seeking out Emeralds in the distance. In addition, Tikal cannot battle well since her punches have a very short reach.

RINGS	SPECIAL ATTACK	EFFECT
20	Wrath of Gaia	Causes an earthquake using her spiritual power to trip opponents
40	Heaven's Justice	Damages and paralyzes the opponent for a given time using her spiritual power
60	Captive Light	Binds the opponent with a flashing light using her spiritual power

Actions of each character are the same as the ones of Knuckles & Rouge (For details, see P.16).



# CHAOS ZERO

The legendary liquid life form who is the guardian of Chao and its friends. Chaos Zero has immeasurable powers but a warm heart.

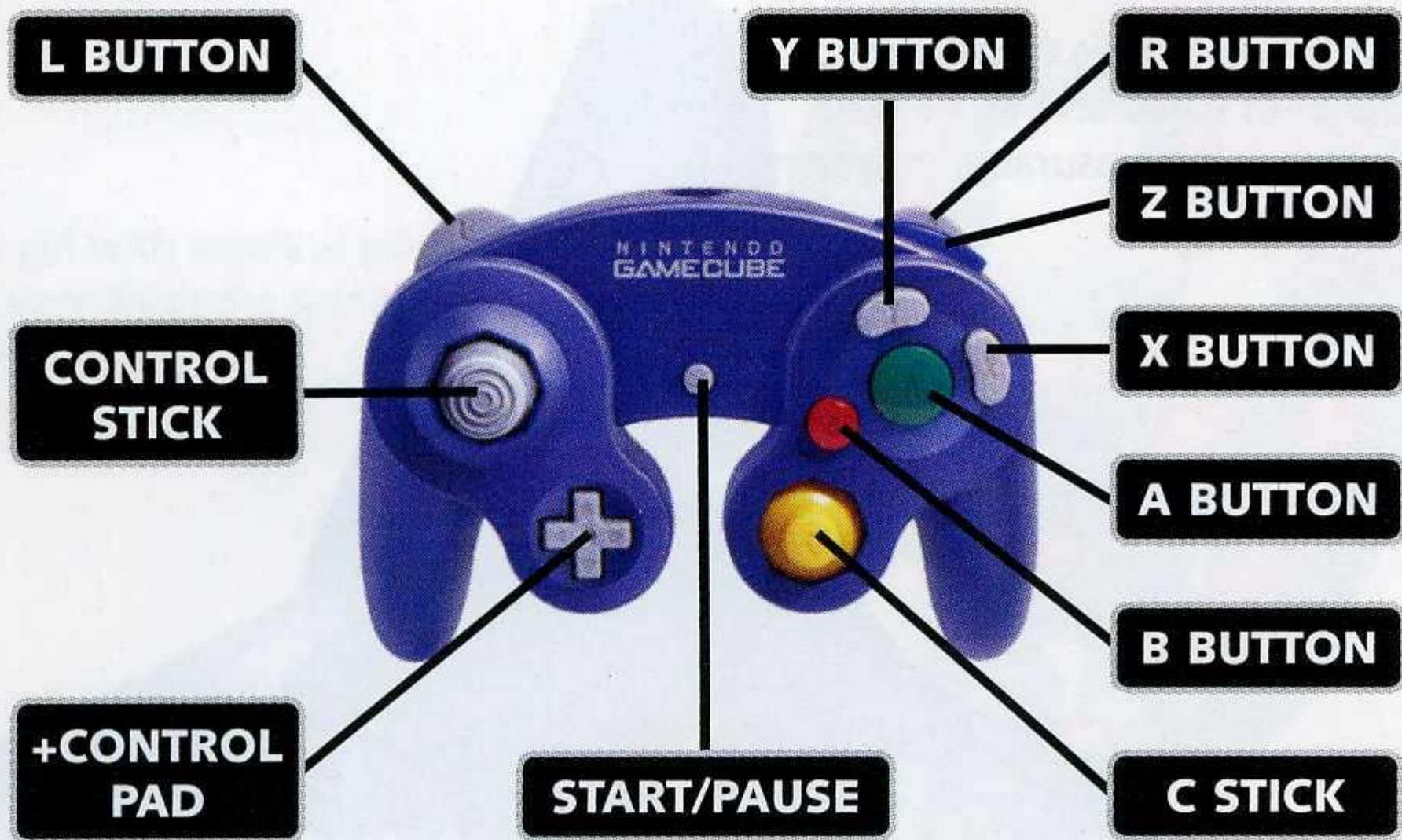


Chaos Zero has very strong combat skills and its punches have a long reach. It also has special power attacks but cannot move very quickly.

RINGS	SPECIAL ATTACK	EFFECT
20	Chaos Impact	Inflicts a big shock on the ground and causes an earthquake to trip the opponent
40	Chaos Strike	Emits a mysterious ripple that damages and paralyzes the opponent for a given time
60	Chaos Bind	Freezes the air around the opponent and paralyzes the opponent for 30 seconds

Actions of each character are the same as the ones of Knuckles & Rouge (For details, see P.16).

# BASIC CONTROLS



"Sonic Adventure 2 Battle" is a one or two player game. Connect the Nintendo GameCube™ Controller to Controller Socket 1 (one player) or Controller Socket 1 and 2 (two players).

\*Maximum of four players can participate in the Chao Race. See P.45 for the controls during the Chao Race.

\*To soft reset the Nintendo GameCube™ and return to the Title Screen during gameplay, simultaneously press and hold the B Button, X Button, and START/PAUSE.

MAIN FILE	CHAO DATA
3	8
BLOCKS USED	

This game is Memory Card compatible. Nintendo GameCube™ Memory Card (sold separately) is required for backup. See P.26 for more information about save data.

## MENU CONTROLS

<b>START/PAUSE</b>	Game Start
<b>CONTROL STICK/+CONTROL PAD</b>	Move cursor (Select Menu Item)
<b>A BUTTON</b>	Enter selection
<b>B BUTTON</b>	Cancel (return to previous screen)

## DURING THE GAME

<b>START/PAUSE</b>	Pause the game (bring the Pause Menu)
<b>CONTROL STICK</b>	Move a character
<b>A BUTTON</b>	Jump
<b>B/X BUTTON</b>	Action
<b>Y BUTTON</b>	Switch Action Window
<b>L/R BUTTON</b>	Rotate Camera

The Z Button is not used in this game.

\*See P.12~P.17 for details concerning the actions of each character.

## ACTION BUTTON

The B Button (also X Button) is called the Action Button. Its function changes automatically according to the situation around the player, and will be displayed in the Action Window at the top right. For example, you cannot only lift things but also call small animals hidden somewhere in the Action Stages by whistling. Also, when you have more than one choice of actions you can take for specific situation, press the Y Button to cycle through the choices.



# STARTING THE GAME

## ▶ Using Progressive Scan TV

This software is compatible with progressive scan video output, using the Component Video Cable (sold separately). Please refer to the instruction manual of Nintendo GameCube™ for directions on how to connect.

- 1 Connect your TV set and Nintendo GameCube™ with Component Video Cable.
- 2 Place the Sonic Adventure 2 Battle Game Disc, close the Disc Cover, and press the POWER Button.
- 3 After the Nintendo GameCube™ logo is displayed, press and hold the B Button.
- 4 You will be asked whether to display in Progressive Mode. Select "Yes" and the game will be displayed with Progressive Scan output.

Once the Progressive Mode is selected, unless the video cable is changed, the Display Mode Select screen will be displayed each time the power is turned on, without pressing the B Button. Also, depending on the type of television set you are using, the horizontal/vertical ratio of the screen may be changed.

## STARTING THE GAME

Press START/PAUSE during the Title Screen to access the Memory Card Screen. Use the Control Stick/+Control Pad to select a Memory Card, and press the A Button to enter. Note that the data will not be automatically saved if you press the B Button to cancel.



## SAVE FILE SELECTION

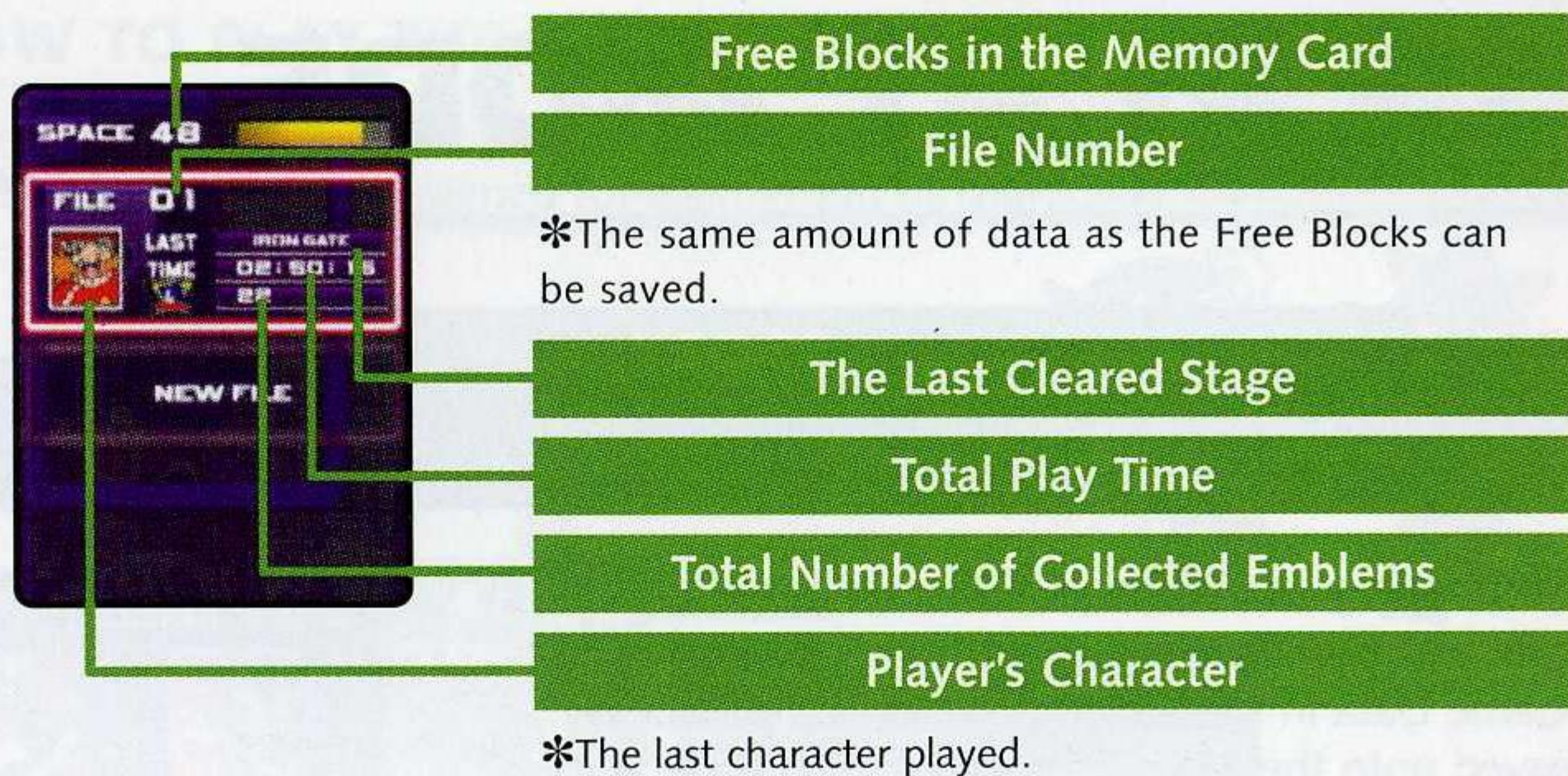
After selecting a Memory Card, a Save File Select Screen will be displayed. If there is no Game Data, make a new one. To make a new file, a Memory Card with 3 Blocks of free space for the Main Data and 8 Blocks for the Chao Data is required. Selecting a file and entering the selection enable you to save the game progress on this file.



## Save File

There are 2 kinds of save files to use in this game. For more details, please see below.

FILE	BLOCKS USED	SEE PAGE
Main Data	3	P.27
Chao Data	8	P.50



\*Once the file is selected, the data will be saved automatically on the file until the game is finished. **Please do NOT turn the power off or unplug the Memory Card during saving.** See Options on P.49 for how to change the game file during the game.

## MODE SELECTION

If the file to be used for saving is selected, a Mode Select Screen is displayed. Use the up and down of the Control Stick/+Control Pad to select a mode and press the A Button to enter.



### 1P PLAY

Play a one-player game. You can play either HERO side or DARK side stories.

### 2P BATTLE

Play battle mode. Connect Controllers to Controller Socket 1 and 2.

### EXTRA

Extra features such as the game tutorial by Chao.

### OPTIONS

Change various game settings.

# 1P PLAY MODE

## STORY

Play the game to advance the storyline.

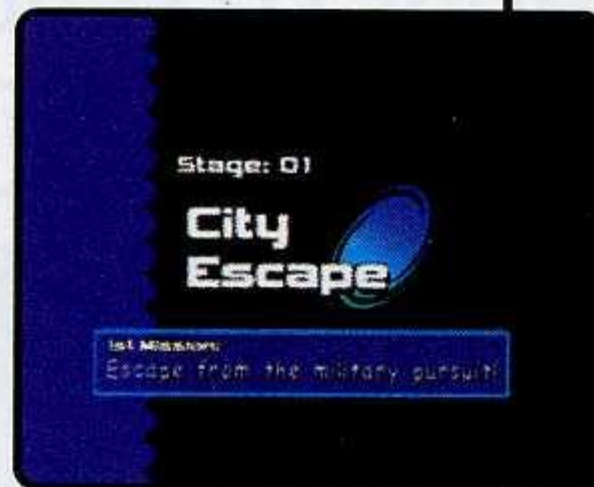
In the Story Mode, select either HERO side or DARK side and play the game to reveal each story. The Game Data in the Story Mode will automatically be saved onto the Main Data when each stage is cleared. The game ends if the remaining lives is 0.



## GAME FLOW

### INTRODUCTION

The objectives of the stage as well as the mission to clear the stage are displayed.



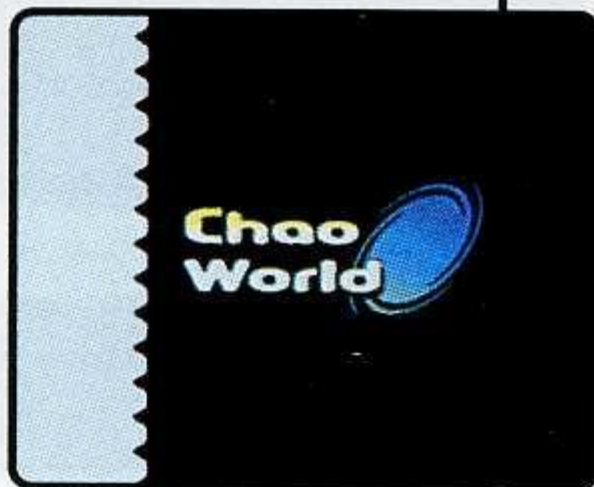
### ACTION STAGE

Clear the assigned mission for each stage.



### CHAO WORLD

If you find a Chao key, you can visit Chao world.



Advance to the Next Stage

# HOW TO PLAY THE ACTION STAGE

How to play the Action Stage depends on a player's character, and there are 3 types of action scenes assigned for each group of characters.

## ▶ Sonic & Shadow



- 1 Score
- 2 Elapsed time
- 3 Number of collected rings/Chao key
- 4 Remaining lives
- 5 Chaos Drives and small animals collected



There are many tricks set in the stage. Use various actions and get Level-Up Items.



Get technique points and increase your score by gaining rings or destroying enemies.



The stage is cleared when you reach the Goal Ring. The total score, the time in which the game was cleared, and the number of rings you obtained will determine the rank displayed after clearing the stage.

Advance to the Next Stage

► Tails & Dr. Eggman



- 1 Score
- 2 Elapsed time
- 3 Number of collected rings/Chao key
- 4 Remaining lives
- 5 Health Gauge
- 6 Chaos Drives and small animals collected



Proceed through the game by destroying enemies with the Lock-on Missile. Stay aware of the HP Gauge displayed at the bottom of the screen. You can restore HP by gaining rings or Chaos Drives.



You can get higher points by locking onto multiple enemies simultaneously.



The stage is cleared when you reach the Goal Ring.

Advance to the Next Stage



► Knuckles & Rouge



- 1 Score
- 2 Elapsed time
- 3 Number of collected rings/Chao key
- 4 Remaining lives
- 5 Treasures collected
- 6 Emerald Radar
- 7 Chaos Drives and small animals collected



Find the Emeralds hidden within the stage (treasures hidden vary depending on the stage) with the radar as well as the hints.



Once you move into the vicinity of a desired object, the radar will start flashing from green to yellow to red.



Press the B Button when you approach a monitor screen and the hints will be displayed. You can get up to 3 hints per Emerald.



You will get more technique points and will be rated higher by finding a treasure with fewer hints in a shorter time.

Advance to the Next Stage

## THE RULES IN THE ACTION STAGE

Learn about the basic rules in the Action Stage. Utilize them and proceed through the game with an advantage.

### ► LEVEL-UP ITEMS

Level-Up Items hidden somewhere in the Action Stages provide an enhanced attacking ability or action. The stage may not be cleared without obtaining these items. Once you obtain them, you have them to use for the rest of the game.



### ► OMOCHAO

Omochoo will act as your guide to clear stages throughout the game, and can be found at various locations. If you need some help during the game, go and find them!



### ► RINGS

If the characters are skilled enough to collect 100 rings, they will receive an extra life. Excluding Tails and Dr. Eggman, all other characters can survive damage inflicted by enemies as long as they are carrying at least one ring. When attacked, these characters will lose all the rings they were carrying.



### ► CHAO CONTAINER

During the game, there are 3 light blue containers called Chao Containers in each stage. The first Chao Container contains a Chao key, which is a key to Chao World. The second contains small animals. What is inside the third one? You'll just have to find out for yourself.



### ► POINT MARKERS

There are several point markers placed throughout the stage that you can use to save your character's time and position within the stage. If your character loses a life, the next life will start from the location of the last point marker touched with the time that was logged when the marker was originally touched. If you have a certain amount of rings when touching the point marker, you will receive a bonus item.

More than 90	Shield
More than 80	Speed up
More than 60	20 rings
More than 40	10 rings
More than 20	5 rings



### ► PAUSE SCREEN

Press START/PAUSE while the game is being played to pause the game and bring up the Pause Menu. On the Hunting stages (Knuckles and Rouge), the hints you have obtained will be displayed as well. Use the L/R Buttons to cycle through hints or press and hold either the L or R Button to stop cycling the hints.



Continue	Resume gameplay
Restart	Start over from the beginning of the stage. Note that this will cost you one life.
Exit	Quit the Game

► **TECHNIQUE POINTS**

Technique points are awarded in different ways for each type of stage.

For Sonic & Shadow, you can earn them by performing technical actions or continuous actions (action link). For Tails and Dr. Eggman, defeating more enemies with a single Lock-on will earn technique points. For Knuckles and Rouge, the amount depends on the number of hints you received and the time you had in order to find the Emeralds (less hints and shorter time equals more points).



► **SMALL ANIMALS IN THE ACTION STAGE**

In each stage, you can rescue small animals hidden in many places. Small animals are useful in raising Chao. If you rescue all small animals in each stage, you are awarded an extra life.



**The number of small animals hidden in each stage**

Sonic & Shadow	20
Tails & Dr. Eggman	15
Knuckles & Rouge	10

◀ The small animals hidden in Chao containers or in the enemies are not included.

► **CHAOS DRIVES**



If you defeat enemies, you can collect "Chaos Drives." Chaos Drives are useful in raising Chao. For Tails and Dr. Eggman, Chaos Drives will also recover lost HP.

◀ You can carry up to 10 small animals and Chaos Drives at a time.

► **BATTLING THE BOSSES**

You will encounter a "Boss" while you are proceeding through the game in the Story Mode. Find its weakness and attack the boss to deplete its life gauge. If you deplete its life gauge displayed at the top right of the screen completely, you will win the battle.



► **EMBLEMS**

You are awarded an emblem for satisfying certain conditions, such as clearing a stage, Chao race, etc. You can verify emblems and number of stages cleared in the Emblem Results Screen (See P.48).



## ITEMS

There are 2 types of items: the items that you can obtain from "Item Boxes" and the Level-Up Items. See Actions on P.13, 15, and 17 for details of the Level-Up Items.

### HIGH-SPEED SHOES

These shoes provide your character with a boost of speed for a limited time.



### RINGS

Adds 5/10/20 rings to your ring collection.



### MAGNETIC SHIELD

Attracts and collects all nearby rings until damage is sustained.



### HEALTH

Restores all your HP (Tails and Dr. Eggman stages only).



### INVINCIBILITY

Destroys your enemies without taking any damage for a limited time and earn twice as many points as normal.



### SHIELD

Protects your character from damage one time only. Once you get damaged, this item will disappear.



### BOMB

Destroys all onscreen enemies.



### EXTRA LIFE

Adds an extra life to the total number of lives.



## OTHER CHARACTERS



### **MARIA ROBOTNIK**

A beautiful and mysterious girl that exists in the memory of Shadow, Maria is the granddaughter of Professor Gerald and a cousin of Dr. Eggman.

### **PROF. GERALD ROBOTNIK**

A brilliant scientist and Dr. Eggman's grandfather. Noted as one of the most brilliant minds of all time, Professor Gerald designed the world's first space colony, "ARK." He was also involved in the development of the ultimate life form: "Project Shadow." He later disappeared under mysterious circumstances.

## NEW PLAY MENU

Once you clear the certain conditions in the Story Mode, you will be able to select a new play menu both in the 1P play Mode and in the 2P Battle Mode. Use the left and right of the Control Stick/+Control Pad to select a menu to play and press the A Button to enter.



### STAGE SELECT

Select a stage to play

If you cleared a stage in the Story Mode, the stage select mode will be displayed. Use the Control Stick/+Control Pad to select a character to play. The name of the stage as well as the rank of each mission will be displayed. Press the A Button to display the play record, select the mission to play with the Control Stick/+Control Pad and press the A Button to start the game.



You can also go to Chao World from the Stage Select. After the emblems which you obtained in the Chao Race are displayed, press the A Button and select a character to play.

At the bottom of the screen, the total number of rings you have earned in the Action Stage will be displayed. With the rings you have earned, you can shop at the Black Market (See P.55 for more details).

#### ACCESS CONDITION

Clear at least one stage

#### 5 MISSIONS

- 1st Accomplish clear condition for each character.
- 2nd Collect 100 rings.
- 3rd Find lost Chao somewhere in the stage.  
**\*You must possess the Mystic Melody in order to clear this mission.**
- 4th A time limit is added to the normal clear condition.
- Last The difficulty level increases.

# KART RACE

## Play Kart Racing



After clearing a certain stage in the Story Mode, you can play this stage. Use the left and right of the Control Stick/+Control Pad to select a driver, and use the up and down to select the course to play on from BEGINNER, STANDARD and EXPERT.

### ACCESS CONDITION

Clear the stage in the Story Mode.

### ► HOW TO VIEW A SCREEN



- 1 Total Time
- 2 Record Time of the Course
- 3 Number of Rings
- 4 Position
- 5 LAP Time of each Lap
- 6 Current Lap
- 7 Boost Window (Use this with 20 rings)

### ► BASIC CONTROLS

CONTROL STICK	Machine Operation
A BUTTON	Acceleration
B/X BUTTON	Braking
Y BUTTON	Boost

# 2P BATTLE MODE

## SELECT A BATTLE

Once you select the 2P Battle Mode, the Battle Select screen will be displayed. Use the left and right of the Control Stick/+Control Pad to select the battle to play, and press the A Button to enter. There are 7 Battles in total, and the number shown on the screen indicates the result of the battle.



Random Battle	CPU selects a match from below randomly	P.44
Action Race Battle	High-speed action race battle	P.42
Treasure Hunt Race	Find the treasure	P.43
Shooting Battle	Lock-on shooting battle	P.44
Chao Race	Race using your hand-raised Chao	P.45
Chao Karate	Karate Match among Chao	P.46
Kart Race	Kart Racing	P.47

## ACTION RACE BATTLE

### SELECT A CHARACTER

After selecting the Action Race Battle, Treasure Hunt Race and Shooting Battle, the character select screen will be displayed. Use the left and right of the Control Stick/+Control Pad to select a character and press the A Button to enter.

Which character you can select varies upon each battle. The total rating for each character is displayed with ☆ on the scale of 1 to 5.





## SELECT A STAGE

After selecting a character, the stage select screen will be displayed. The level is set for each stage, and the stages are categorized by the difficulty level. Use the Control Stick/+Control Pad to select a stage and press the A Button to enter.

\*You must clear the Story Mode in order to play Level 4.



Selecting this cursor will let CPU select a stage from the selected level randomly.

## OPTIONS

You can change the settings in any Battle by selecting "Battle Options" shown at the top right of the screen. Use the left and right of the Control Stick/+Control Pad to select.



Auto Handicap	Switch the Auto Handicap Function to on/off
Auto Handicap Setting	Select the setting level of the Auto Handicap
Time Limit	Switch the time limit function to on/off
Number of Battles	Switch the number of Battles to either best of 1 or 3

\*If you select 3 Battles to play, the number of Battles you won is displayed at the bottom of the screen with ☆.

## AUTO HANDICAP

This function enables players of different levels to enjoy a battle. The special attack level of a player in a lower level will become higher. The level can be changed to either MAX or MIN.

## ▶ HOW TO VIEW A SCREEN

If either Action Race Battle or Treasure Hunt Race is selected, the screen will be split vertically in half. With Shooting Battle, the game is played on a full-screen. Other details on how to view a screen are the same as 1P PLAY.

Player 1's Side of Screen



Shooting Screen



Player 2's Side of Screen

## THE CYCLE OF SPECIAL ATTACK

In the Action Race Battle, each character can perform a special attack of his/her own, depending on the number of collected rings. The type of a special attack changes every 20 rings as 20, 40, 60 you collect. After obtaining more than 80 rings, the type of a special attack returns back to the one of 20 rings (The number of the rings to use each type of a special attack depends on each character). The special attack can be used even after the character loses one life.

For the special attack cycles of Battle Characters, see P.18-23. For the special attack cycles of story characters, see the following page.

## ► BASIC CONTROLS

RINGS	SPECIAL ATTACK	EFFECT
► Sonic & Shadow		
20	Speed-up	Boosts the speed for 10 seconds
40	Sonic Wind (Sonic) Chaos Spear (Shadow)	Delivers an attack to the distant opponent
60	Time Stop (Sonic) Chaos Control (Shadow)	Freezes opponent for a certain time period
► Tails & Dr. Eggman		
20	Laser Missile	Fires multiple Homing Missiles simultaneously
40	Rocket Launcher	Fires 12 rockets to the sky
60	Power Laser	Fires super laser from the front side of the machine
► Knuckles & Rouge		
20	Hammer Punch (Knuckles) Hip Drop (Rouge)	Causes an earthquake and trips the opponent
40	Thunder Arrow (Knuckles) Black Wave (Rouge)	Torpedoes opponent in the distance to inflict and paralyze them for a certain time period
60	Power Flash (Knuckles) Charm Ray (Rouge)	Releases a flash of light and depletes control of the opponent

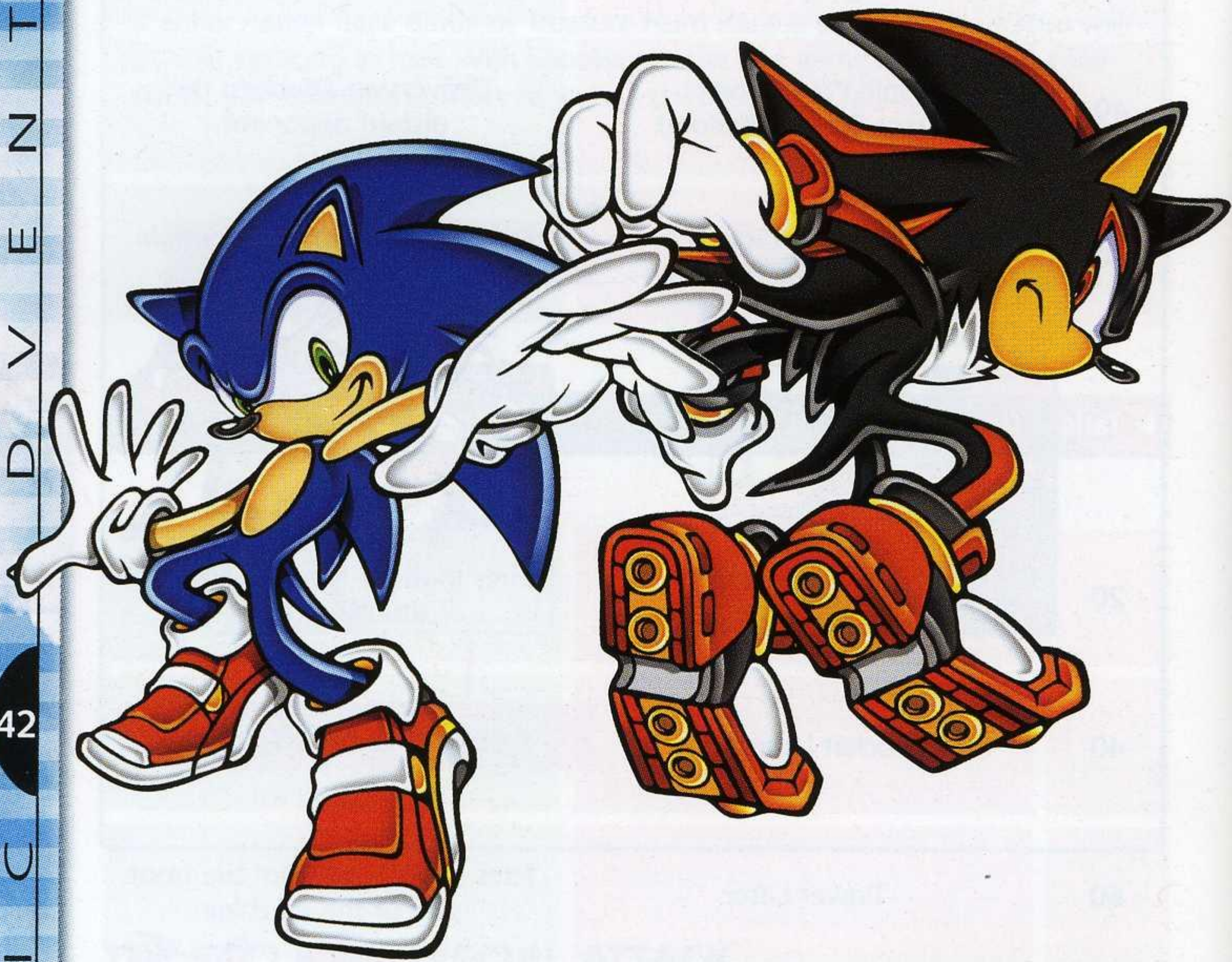


## ACTION RACE BATTLE

Reach the Goal

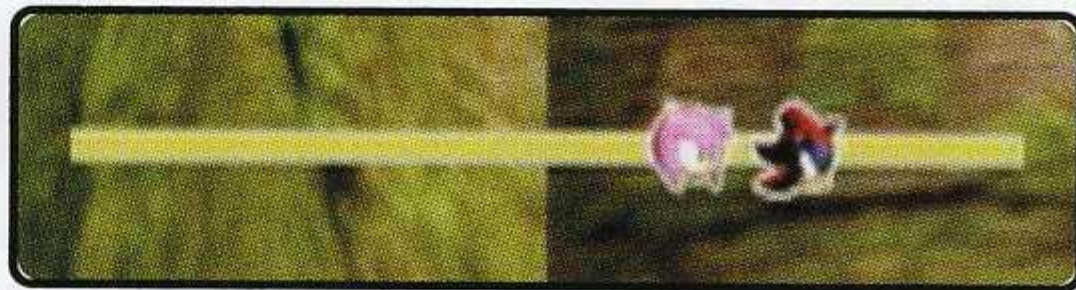
### RULES

First to reach the Goal Ring wins. For details of how to play the game and the character controls, see the Story Mode. When the time is up, the player in the lead wins the game.



### POSITION CHANGE

In the Action Race Battle, each player's position is displayed on the bar at the bottom of the screen. On the



bar, the left side indicates the start point and the right side indicates the goal.

Characters for the Action Race Battle

Sonic / Shadow / Amy / Metal Sonic

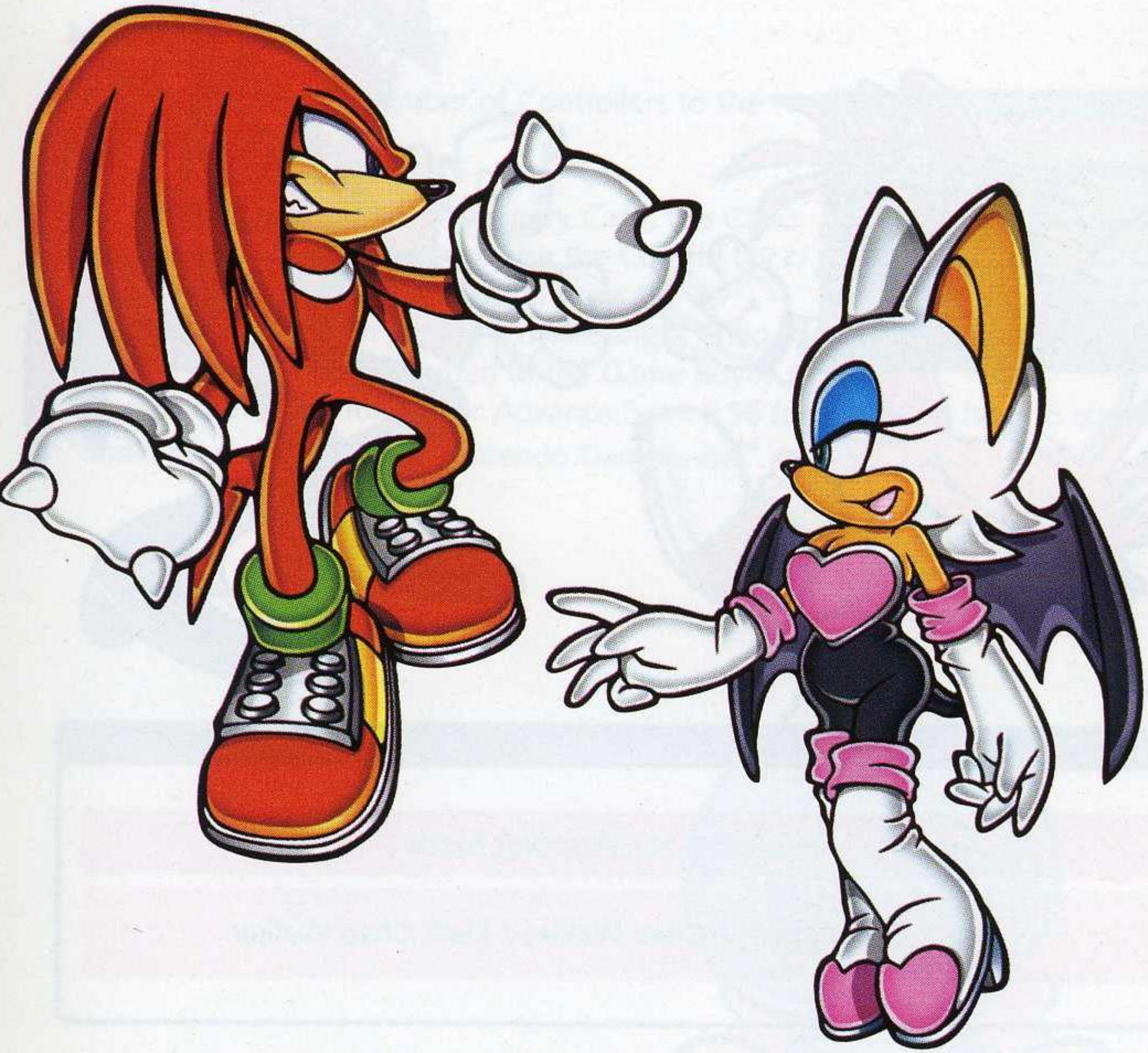
## TREASURE HUNT RACE

Find pieces of Emerald

### RULES

First to find Emerald shards wins. In Level 1, find 1 Emerald shard to win, and in Level 2, find 2 shards to win. For details of how to play the game and the character controls, see the Story Mode.

When the time is up, the player with the most Emerald shards wins.



Characters for Treasure Hunt Race

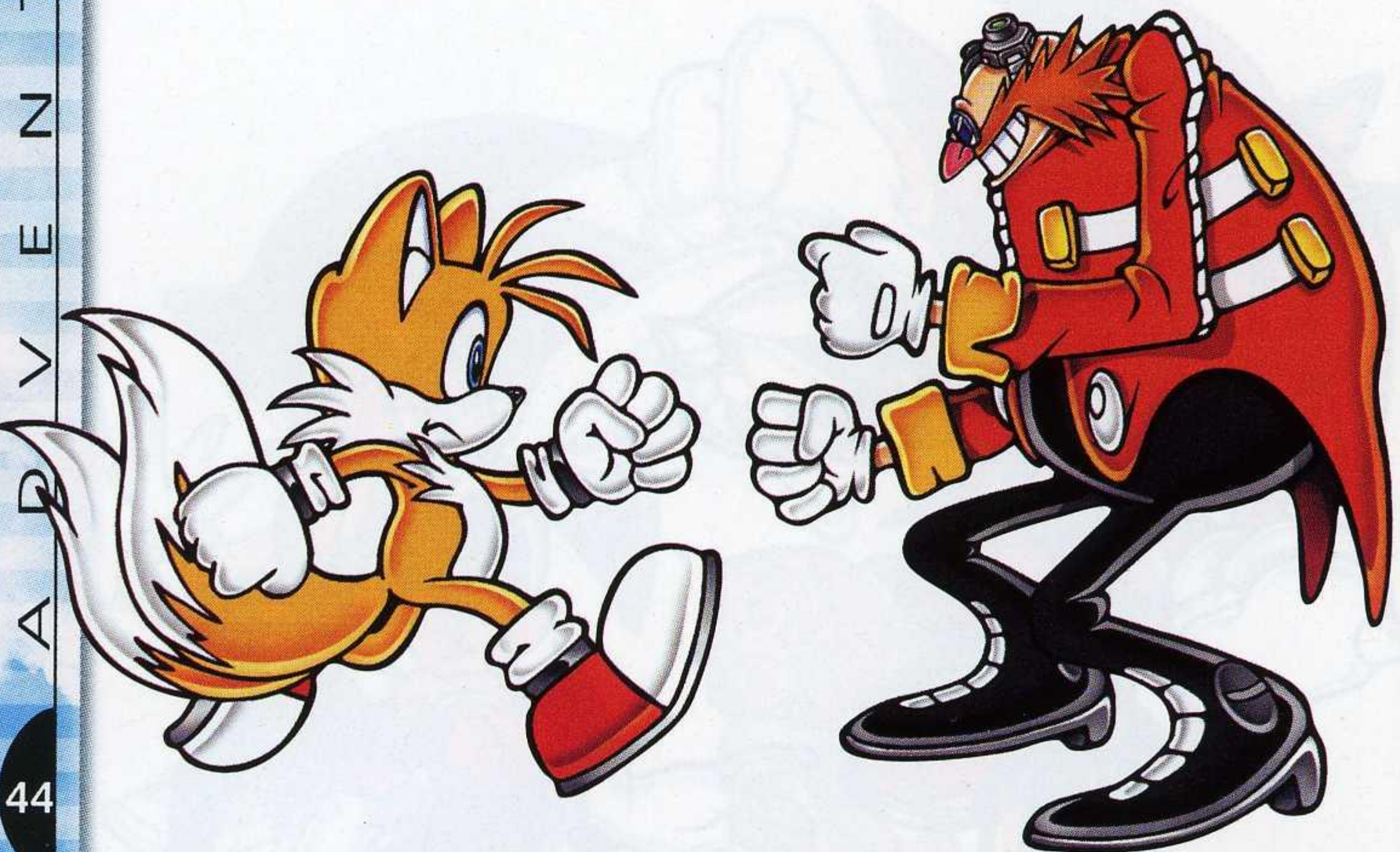
Knuckles / Rouge / Tikal / Chaos Zero

## SHOOTING BATTLE

Shoot and attack the opponent

### RULES

First to reduce the opponent's life gauge to zero or to knock the opponent outside the stage wins. For details of how to play the game and the character controls, see the Story Mode. When time runs out, the player with more HP wins. Note that in Level 1, first to reach the Goal Ring wins.



**Characters for Shooting Battle**

Tails / Dr. Eggman / Chao Walker / Dark Chao Walker

## RANDOM BATTLE

CPU selects a Battle randomly

Play a randomly-selected mode from Action Race Battle, Treasure Hunt Race or Shooting Battle. A character as well as a stage will be selected automatically. Press the A Button to select "Random Battle" to start the game.

## CHAO RACE

Play a race using your hand-raised Chao

Play a race against up to 3 other players' Chao using your hand-raised Chao. First, there are 4 "Trial" courses. The more races you clear, the more new race modes you will be able to play.



### How to join a race

Connect a necessary number of Controllers to the Controller Socket.

If you have Chao Data in a Memory Card, the Chao Select screen will be displayed. Use the Control Stick/+Control Pad to select a Chao and press the A Button to enter. When joining a race using a Chao raised in the Tiny Chao Garden of the Game Boy® Advance Game Pak for "Sonic Advance," see P.56 for details on how to connect "Sonic Advance" with the Nintendo GameCube™.



#### ▶ HELP CHAO!

In the Chao Race, a player can help Chao. Press the A Button to boost the speed of Chao during the race. Consider the timing to help Chao such as when Chao gets into its favorable area. The more you help Chao, the more its stamina will decrease. Stay aware of the gauge so as not to burn its stamina out, otherwise Chao's speed will decrease dramatically.

## CHAO KARATE

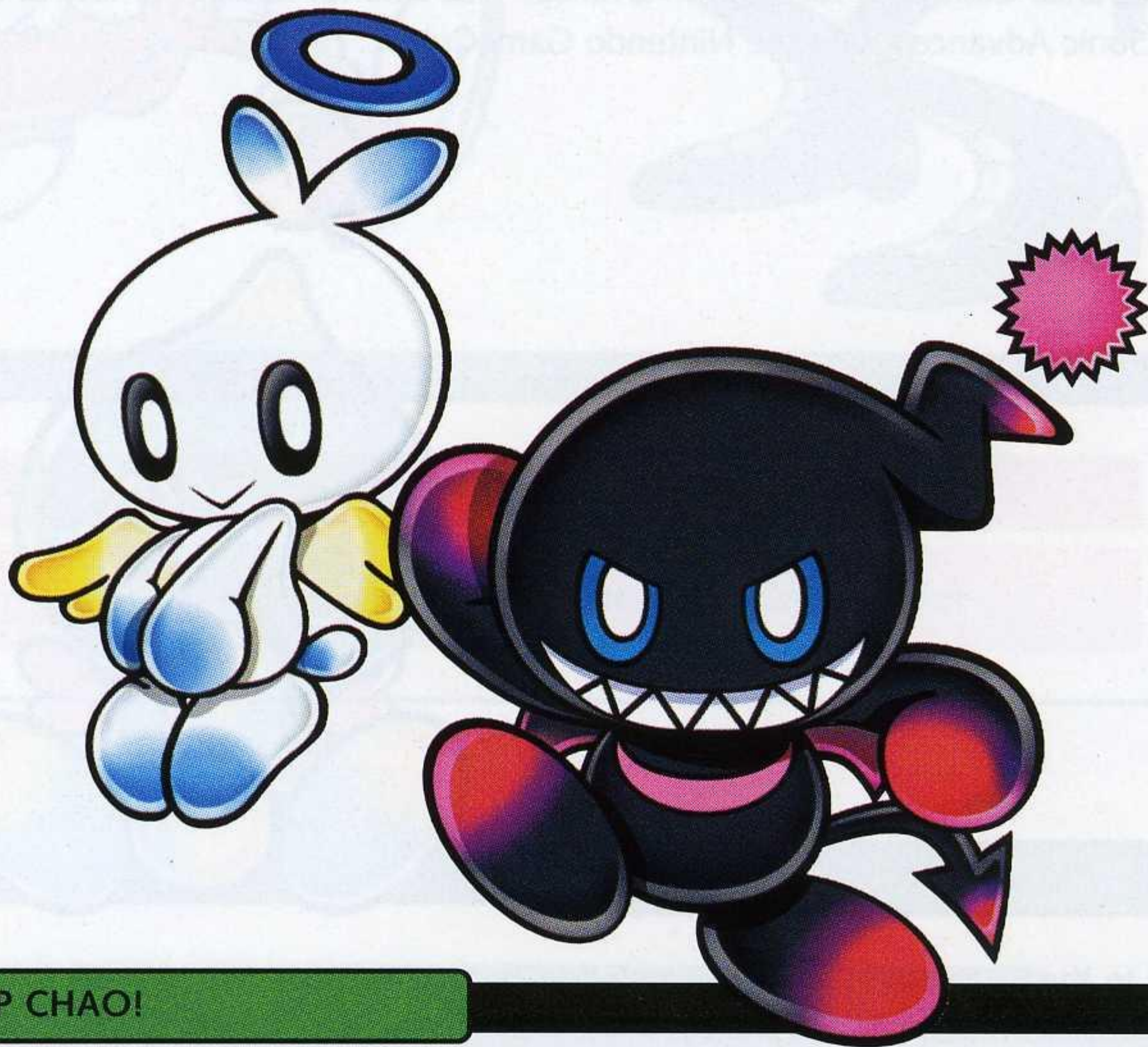
Play Karate using your hand-raised Chao

In Chao Karate, you can play karate using your hand-raised Chao. Try to win a match tanning the opponent. First to run out of stamina and fall crying by tanning other Chao loses. First to fall off the stage loses as well.



### Rules to join Chao Karate

If you have Chao Data in a Memory Card, the Chao select screen will be displayed. Use the Control Stick/+Control Pad to select a Chao and press the A Button to enter. When joining a match using a Chao raised in the Tiny Chao Garden of the Game Boy® Advance Game Pak for "Sonic Advance," see P.60 for details on how to connect "Sonic Advance" with the Nintendo GameCube™.



#### ▶ HELP CHAO!

If Chao runs out of its motivation, it not only stops attacking opponents but crouches down or starts snoozing.

Press the A Button to help motivate Chao during the match.



## KART RACE

Select a character and play Kart Race

Select a driver from the Story characters and join a race. There are 3 courses; BEGINNER, STANDARD and EXPERT to select from. You must clear the Kart Stage of both Hero and Dark Story to enable the 2P Kart Race Mode. In a two-player game, the top side is Player 1, and the bottom is Player 2. Other details on how to view a screen are the same as in the Kart Race in 1P Play (See P.37).



select from. You must clear the Kart Stage of both Hero and Dark Story to enable the 2P Kart Race Mode. In a two-

player game, the top side is Player 1, and the bottom is Player 2. Other details on how to view a screen are the same as in the Kart Race in 1P Play (See P.37).

Other details on how to view a screen are the same as in the Kart Race in 1P Play (See P.37).

### Characters for the Kart Race

Sonic / Shadow / Tails / Dr. Eggman / Knuckles / Rouge

### RACE KART FEATURES



The kart each character uses has different parameters. The parameters are displayed when selecting a driver.

SPD : Speed  
BRK : Braking

ACL : Acceleration  
GRP : Grip

Learn the features and select a driver.

# EXTRA

## MENU SELECT

This mode is full of extra goodies such as how to play a game for your enjoyment. Use the left and right of the Control Stick/+Control Pad to select a menu, and press the A Button to enter.



### TUTORIAL

You can learn all about how to play the game

Here, Omochao will explain the controls and how to play the game. Use the up and down of the Control Stick/+Control Pad to select the item, and press the A Button. To advance Omochao's explanation, press the A Button, to go back to previous screen, press the B Button.



### EMBLEM RESULTS

Verify the emblems you gained

Here, you can view the Emblems you gained in each mode; HERO side, DARK side and Mini-games.

Use the Control Stick/+Control Pad to select an item to view, and press the A Button to begin the missions. If you select a stage which does not contain an emblem, you will be asked to challenge the new mission. Try to clear all the missions and collect all 180 emblems!



### SOUND TEST

Enjoy the background music used in the game

BGM played more than once in the game is added to the list in the Sound Test. Use the up and down of the Control Stick/+Control Pad to select a category you fancy listening to and press the A Button to enjoy the song.



## CHANGE VARIOUS SETTINGS

You can change various game settings in the Options. Use the Control Stick/+Control Pad to select an item to change and press the A Button. To go back to previous screen, press the B Button.



You can change the Menu Screen Theme.



You can choose the language used for the voice and the text.



You can change the sound output between Stereo and Monaural.



You can switch the Rumble Feature to on/off



You can change the game file to be used.



You can erase the match records in the 2P Battle Mode.

# OPTIONS

# ABOUT "CHAO"

In this game, there exists a tiny and cute mysterious artificial form "A-LIFE" called "Chao." Chao live in an environment called "Chao Garden," and create a very unique ecosystem, learning and breeding according to the player's actions.

\*The Chao Data automatically saves when you leave the Chao Garden. 8 blocks of free space are required in the Memory Card in which the Main Data is also saved.

## THE WHOLE MAP OF THE CHAO WORLD

### CHAO LOBBY



Entrance into Chao World

In the Stage Select Mode (See P.36 for details), you can enter and exit the Chao World as you like. Note that in the Story Mode, once you enter one place and exit, you will have to proceed to the next Action Stage.

### CHAO GARDEN



Chao live in this garden.

### CHAO KINDERGARTEN



**Chao Kindergarten**  
When hatching an egg in the Chao Garden, the entrance to the Chao Kindergarten will appear.

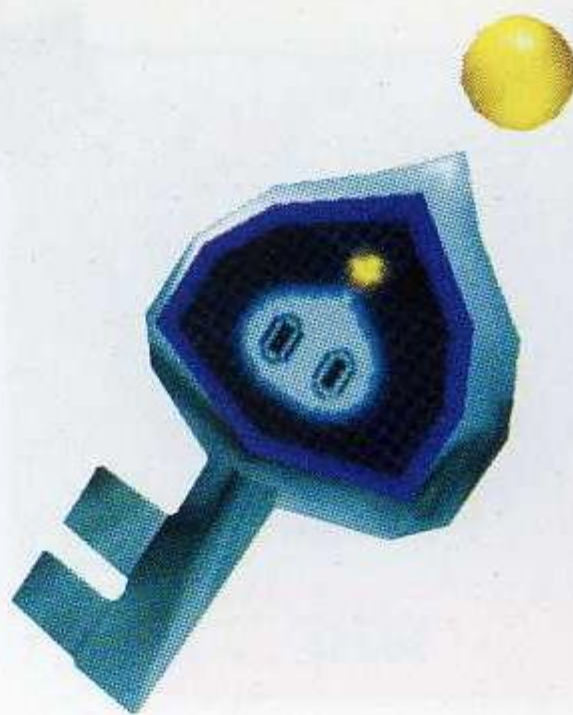
### CHAO STADIUM



You can play Chao Race/Chao Karate in the Stadium.

## MEETING CHAO

To go and meet Chao, you must find and collect a Chao key before clearing the Action Stage. After clearing the stage, you will be able to go to Chao World. From the Chao World, you can go to visit Chao Garden and Chao Kindergarten.



## CHAO GARDEN

Once you are in the Chao Garden, the character will release Chaos Drives and small animals you have collected in the Action Stage. These are essential to transforming your Chao. Note that time in the Chao Garden passes only while you are present within the garden itself.



## RAISING CHAO

Chao hatches from eggs, and grows through infancy into maturity. While growing up, Chao appearances, personalities, and actions change according to the way they are treated by the player (i.e. "petting" vs. "throwing") or food and items ("Chaos Drives," "small animals," etc.) given by the player.



**EGG**



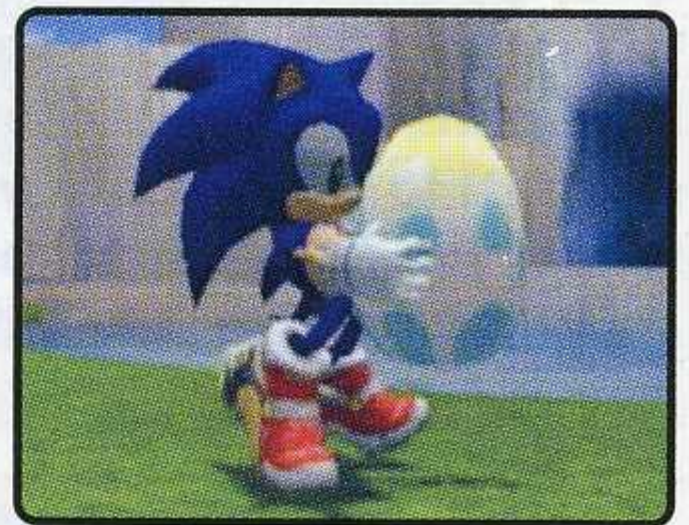
**INFANCY**



**MATURITY**

► **Hatching an Egg**

There are two eggs found in the Chao Garden. The Eggs will hatch by themselves, but you can also hatch them. Chao's personality varies upon the way you hatch them, so try to hatch them in various ways!



► **Giving Food**

Chao grow up eating nuts from the tree. To obtain nuts, stand in front of a tree and press the B Button to grab it. Next, use the Control Stick to shake the tree. When the nuts falls from the tree, give them to Chao.



► **Trees making Special Nuts**

There are trees that grow up from seeds. If you find a seed, give it to Chao. It will plant the seed.

You can get a seed in the Black Market in the Chao Kindergarten.

## CHAO KINDERGARTEN

There is also Chao Kindergarten you can visit from the Chao World. You can take your Chao to various rooms in the Chao Kindergarten and have it learn something or check its health. You can also get tips on how to raise Chao.



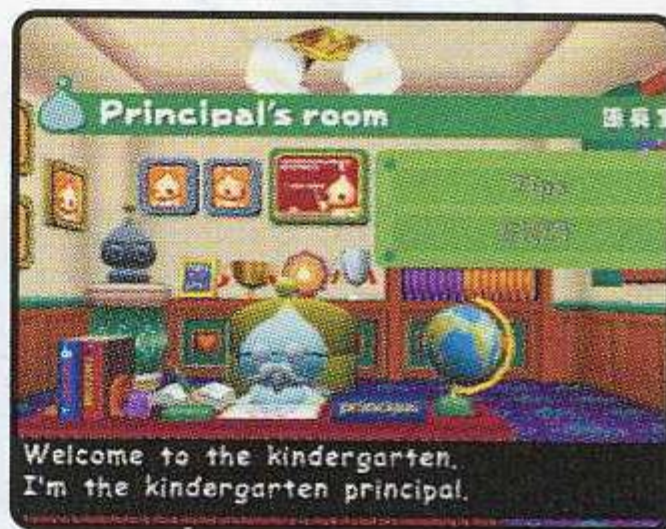
### ► Rooms in Chao Kindergarten

In the Chao Kindergarten, there are 5 rooms such as "Principal's Office," "Health Center," "Classroom," "Fortune-Telling House" and "Black Market." Once entering Chao Kindergarten, use the Control Stick to move around. To enter the room or leave the Chao Kindergarten, stand in front of the door, and press the A Button.



### PRINCIPAL'S OFFICE

You can obtain tips on how to raise your Chao from Doctor Chao. Use the up and down of the Control Stick/+Control Pad to select the menu item you wish to obtain tips on. He shall provide you with useful information.



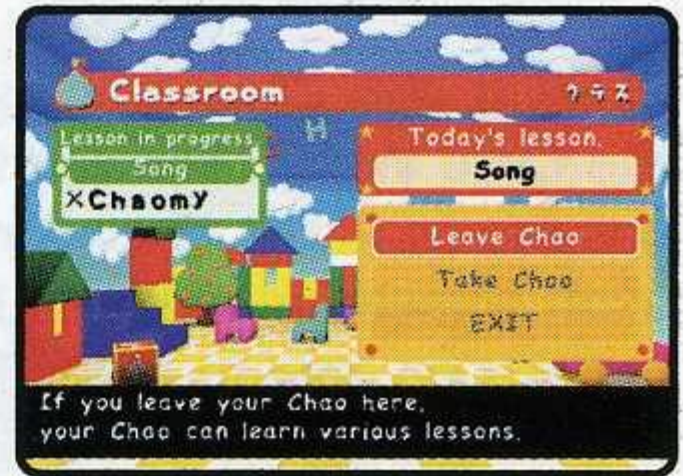
### HEALTH CENTER

Here you can examine your Chao's health condition, ability, personality and a favorable image your Chao has about you. In order to examine your Chao, pick up your Chao in Chao Garden, and bring it to Chao Kindergarten through Chao World.



## CLASSROOM

Here you can have your Chao get some lessons and educate it. The details of the lessons vary depending on the time. Pick up your Chao in the Chao Garden, and bring it to the Chao Kindergarten through the Chao World.



- To have your Chao get some lessons, you must leave your Chao in a classroom for a while.
- After taking the lessons, Chao will remain in a classroom until you come and pick it up. If there is sign of ☉, it indicates that you can pick up your Chao.
- You can leave up to 4 Chao in a classroom to have them take lessons at the same time.



## FORTUNE-TELLING HOUSE

Here, you can let a fortuneteller name your Chao or change your Chao's name. To change your Chao's name, pick up your Chao in the Chao Garden, and bring it to the Chao Kindergarten through the Chao World.



### ► Change Chao's names



In order to change your Chao's name, use the Control Stick/+Control Pad to select the characters and press the A Button to enter. When finishing changing the name, select OK and press the A Button. You can change the name with up to 7 characters.

## Trees making Special Nuts

You can buy nuts using the rings you have saved in the Action Stage, or you can also exchange items you no longer want to keep with rings. Use the up and down of the Control Stick/+Control Pad to select Shopping or Sell Items and press the A Button.



### ► Shopping / Sell Items



You can buy or sell items. Use the Control Stick/+Control Pad to select items you wish to buy / sell and press the A Button.

**■ How to connect Game Boy® Advance to Nintendo GameCube™ with Nintendo GameCube™ - Game Boy® Advance Cable**

How to connect the Game Boy® Advance to the Nintendo GameCube™ using the Nintendo GameCube™-Game Boy® Advance Cable is mentioned below.

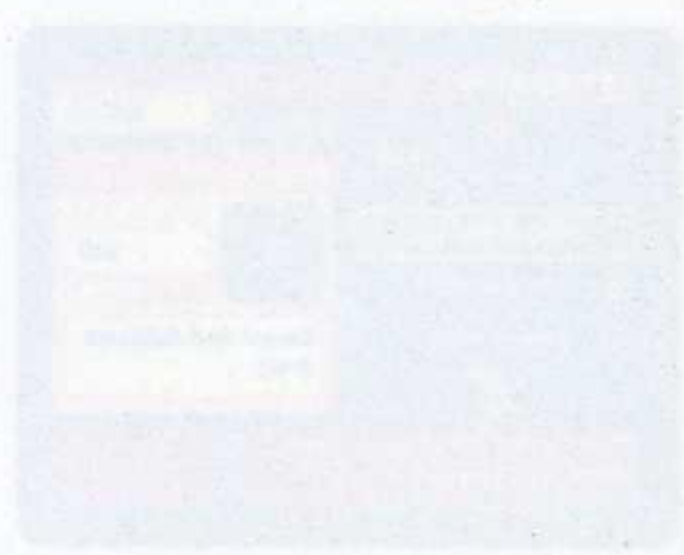
**■ Preparations**

- Nintendo GameCube -----1
- Game Boy Advance -----1 to 3
- Game Disc of "Sonic Adventure 2 Battle" ----- 1
- Cable -----1 to 3

✳ Before playing a game using the Game Boy Advance, make sure to put Chao into the Tiny Chao Garden. For details on how to move your Chao to the Tiny Chao Garden, see P.62.

**How to connect**

1. Connect the Cables of a number of players to the Controller Socket of the Nintendo GameCube.
  - ✳ See the connection diagram on the right for where to insert the Cables.
2. Connect the Cables to the Game Boy Advance.
3. Turn on the power of the Nintendo GameCube console.
4. Turn on the power of the Game Boy Advance.



## ■ Troubleshooting

Connection between the Nintendo GameCube and Game Boy Advance may not occur correctly in the following cases:

- When NOT using the Cables of Nintendo GameCube.
- When the Cables are not inserted properly.
- When the Cables are not connected to the Nintendo GameCube or the Game Boy Advance properly.
- When the Cables were inserted or removed during linked play.
- When turning off the power of the Nintendo GameCube or the Game Boy Advance during linked play, or pressing the reset button of the Nintendo GameCube.
- When in conditions which do not allow linked play to operate properly in the Tiny Chao Garden (i.e. when the Chao is talking).

### How to connect the Game Boy Advance to the Nintendo GameCube using the Nintendo GameCube-Game Boy Advance Cables.



## ■ Nintendo GameCube™ - Game Boy® Advance Cable Error Message List

If you encounter any problems during gameplay, the following error messages may be displayed on the screen. See below for the solutions.

**[Message]** Unable to select. Please bring your Chao.

**[Solution]** Step on the button of Chao Transporter holding your Chao.

**[Message]** Unable to select. Step on the button without holding your Chao.

**[Solution]** Step on the button of Chao Transporter without holding your Chao.

**[Message]** This Memory Card contains a different Chao Data. Overwrite?

**[Solution]** The Memory Card you are currently using already contains a different Chao Data. The Chao Data you are going to save will overwrite the data already contained in the Memory Card.

**[Message]** The Game Boy Advance is not connected.

**[Solution]** Please check if Cables are connected to both the Nintendo GameCube console and the Game Boy Advance.

**[Message]** Chao is already there. You can't go to the Tiny Chao Garden.

**[Solution]** There is already a different Chao in the Tiny Chao Garden of the Game Boy Advance you selected. Drop off your Chao in the Tiny Chao Garden after picking up the Chao which is currently in the Tiny Chao Garden.

**[Message]** Your garden is full. Unable to pick up anything.

**[Solution]** Please note that you can only keep up to 24 Chao and 40 fruits in the Chao Garden at the same time. Take enough Chao and fruits out of the Chao Garden before picking up any other Chao or fruits.

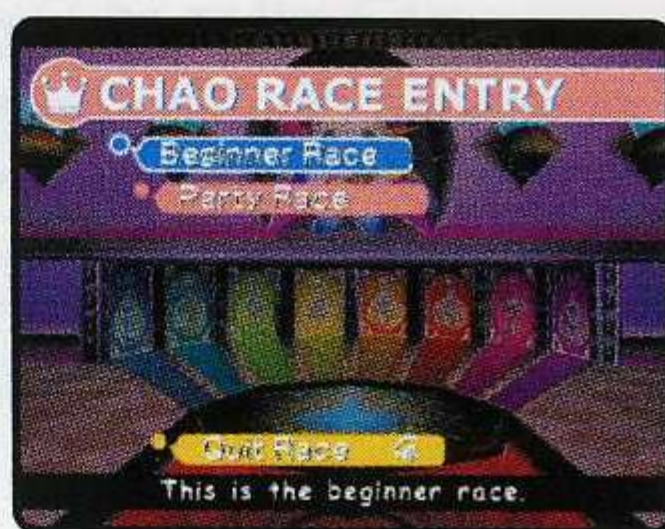
## CHAO STADIUM

In the Chao Stadium located in the Chao Garden, you can have your hand-raised Chao participate in the Chao Race or Chao Karate. If your Chao wins, it will be awarded a toy or a medal.



## PARTICIPATING IN THE CHAO RACE

Select a race mode on the Chao Race Entry Screen. There are 2 types of races: "Beginner Race" only for one player and "Party Race" up to 4 players can join in. After selecting a race mode, choose a Chao to join the race and start the race. For details of the controls during the race, see P.45. The more races you win, the more race modes you will be able to challenge.



## PARTICIPATING IN THE CHAO KARATE

Select a mode on the Chao Karate Entry Screen. There are 2 types of modes: "Tournament" only for one player and "Interleague Game" for 2 players. Choose a Chao to join after selecting a mode. For the Tournament, there are 3 levels: BEGINNER, STANDARD and EXPERT. In each level, you fight over 5 tournaments. When losing or when the game is a draw, the tournament will end. For details of the controls during the match, see P.46.



## ■ How to connect Game Boy® Advance to Nintendo GameCube™ with Nintendo GameCube™-Game Boy® Advance Cable

How to connect the Game Boy Advance to the Nintendo GameCube using the Nintendo GameCube™-Game Boy® Advance Cable is mentioned below.

### ■ Preparations

- Nintendo GameCube -----1
- Game Boy Advance -----1
- Game Disc of "Sonic Adventure 2 Battle" -----1
- "Sonic Advance" Game Pak -----1
- Nintendo GameCube Cable -----1

\* Although you can still play the Tiny Chao Garden without the "Sonic Advance" Game Pak, using the Game Pak will allow you to save your game progress in the Tiny Chao Garden as well as give you access to special items.

### How to connect

1. Set the "Sonic Advance" Game Pak into the Game Boy Advance.
  - \* You may skip this procedure if not using the Game Pak.
2. Connect the Cables to any Controller Sockets of the Nintendo GameCube.
  - \* See the connection diagram on the right for where to insert the Cables.
3. Connect the Cables to the Game Boy Advance.
4. Turn on the power of the Nintendo GameCube console.
5. Turn on the power of the Game Boy Advance.

See P.62 for further details on how to transfer Chao.

## ■ Troubleshooting

Connection between the Nintendo GameCube and Game Boy Advance may not occur correctly in the following cases:

- When NOT using the Cables of Nintendo GameCube.
- When the Cables are not inserted properly.
- When the Cables are not connected to the Nintendo GameCube or the Game Boy Advance properly.
- When the Cables were inserted or removed during linked play.
- When turning off the power of the Nintendo GameCube or the Game Boy Advance during linked play, or pressing the reset button of the Nintendo GameCube.
- When in conditions which do not allow linked play to operate properly in the Tiny Chao Garden (i.e. when the Chao is talking).

## How to connect the Game Boy Advance to the Nintendo GameCube using the Nintendo GameCube-Game Boy Advance Cables.



# CHAO TRANSPORTER

You can take your Chao you raised in the Chao Garden to the Tiny Chao Garden of Game Boy Advance or bring your Chao you raised in the Tiny Chao Garden to the Chao Garden. You can also transport your Chao from one Memory Card to another.

## ▶ Using the Chao Transporter

To transport the Chao, pick up the Chao, and take it to the Chao transporter located in the Chao Garden, and step on the red button. Then the Chao will be put in the Chao Transporter.



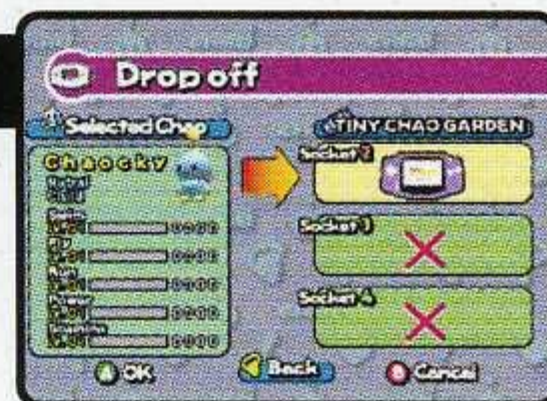
## ▶ The Chao Transporter Menu

After stepping on the red button, the Chao Transport Menu will be displayed. Use the Control Stick/+Control Pad to select the menu and press the A Button to enter.



## ▶ Dropping off your Chao

To put your Chao in the Game Boy Advance, put your Chao into the Chao Transporter and use the up and down of the Control Stick/+Control Pad to select the Game Boy Advance you wish to transport the Chao into and press the A Button. See P.56 for details on how to connect the Game Boy Advance with the Nintendo GameCube.

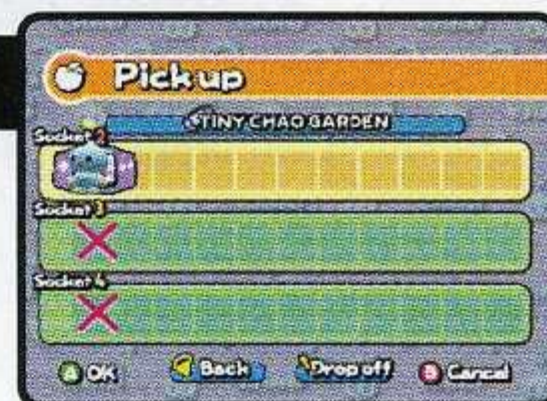


## CAUTION

\*You can save only one Chao in the Game Boy Advance. If there is already one Chao in the Tiny Chao Garden, you can put no more Chao in.

## ▶ Pick up

To pick up the Chao, nuts and eggs you raised in the Tiny Chao Garden from the Game Boy Advance, step on the red button without Chao, and use the Control Stick/+Control Pad and the A Button to choose the Chao, nuts and eggs to pick up. Then select "Pick up" and press the A Button.



## CAUTION

\* Note that the toys you obtained in the Tiny Chao Garden cannot be picked up.

## ▶ Move

You can exchange your Chao or give it to others using the Memory Card. Insert the Memory Card into the Memory Card Slot A and Slot B. Use the up and down of the Control Stick/+Control Pad to choose the Chao to move and press the A Button.





## ► Good-Bye to Chao

Say good-bye to Chao. Once you've said good-bye to the Chao, you cannot meet the same Chao again. Pick up the Chao you wish to say good-bye to, step on the red button of the Chao Transporter and press the A Button.



You can raise the Chao you dropped off in the Tiny Chao Garden. Use the +Control Pad to move the hand cursor. To keep your Chao happy, pet your Chao and keep its garden clean by pulling the weeds using the A Button.



When you press the Game Boy Advance icon in the Tiny Chao Garden, you can play one of two mini-games in the Tiny Chao Garden, simply by pressing the A Button. Use the +Control Pad to select an item and press the A Button to enter. This is your chance to collect rings that can be used to buy things for your Chao.



By pressing the L Button, you can buy fruits, toys and eggs. Use the +Control Pad to choose and press the A Button to get items. Give the items to Chao by pressing the A Button. There are special eggs or toys you can only get here.

## SLEEP / SAVE

When ending gameplay, activate the Sleep Mode to conserve battery life. The Sleep mode is a power-saving mode. You can use this when there is no "Sonic Advance" Game Pak present. Press START to activate the Sleep mode, and use START and the A Button to reset the Sleep Mode. Note that even in the Sleep Mode, the battery is being used. When not playing the game for a long time, or turning the switch of the Game Boy Advance OFF, use the Chao Transporter to bring your Chao back to the Chao Garden, so your Chao Data will be saved.

You can save the data only when there is a "Sonic Advance" Game Pak present. Press START in the Tiny Chao Garden, and select "SAVE & EXIT."

You can raise your Chao in the Tiny Chao Garden of "Sonic Advance" for Game Boy Advance or play various mini-games. You can also take the rings you gained into Chao Garden in the "Sonic Adventure 2 Battle" with you.

# TINY CHAO GARDEN

Also available on  
Game Boy® Advance



GAME BOY ADVANCE

Sonic Advance Published by



Developed by Sega



© SONICTEAM/SEGA CORPORATION, 2001. © SEGA CORPORATION, 2001. All Rights Reserved. Sonic the Hedgehog and all related characters are trademarks or registered trademarks of SEGA CORPORATION or its affiliates. [www.sega.com](http://www.sega.com). Exclusively co-published by THQ Inc. THQ and the THQ logo are trademarks and/or registered trademarks of THQ Inc. All Rights Reserved. ™, ® and the Game Boy Advance logo are trademarks of Nintendo. © 2001 Nintendo.

**\*THIS LIMITED WARRANTY IS VALID FOR U.S. AND CANADIAN NINTENDO GAMECUBE™ GAME DISC MANUFACTURED FOR SALE IN AND PURCHASED AND OPERATED IN THE UNITED STATES AND CANADA, ONLY!**

**Limited Warranty**

Sega of America, Inc. warrants to the original consumer purchaser that the Nintendo GameCube™ Game Disc shall be free from defects in material and workmanship for a period of 90-days from the date of purchase. If a defect covered by this limited warranty occurs during this 90-day warranty period, the defective Nintendo GameCube™ Game Disc or component will be replaced free of charge. This limited warranty does not apply if the defects have been caused by negligence, accident, unreasonable use, modification, tampering or any other causes not related to defective materials or workmanship. Please retain the original or a photocopy of your dated sales receipt to establish the date of purchase for in-warranty replacement. For replacement, return the Game Disc, with its original packaging and receipt, to the retailer from which the software was originally purchased. In the event that you cannot obtain a replacement from the retailer, please contact Sega to obtain support.

**Obtaining technical support/service**

To receive additional support, including troubleshooting assistance, please contact Sega at:

- \* web site ..... <http://www.sega.com>
- \* e-mail ..... [support@sega.com](mailto:support@sega.com)
- \* telephone ..... 1-716-650-6701

**LIMITATIONS ON WARRANTY**

ANY APPLICABLE IMPLIED WARRANTIES, INCLUDING WARRANTIES OF MERCHANTABILITY AND FITNESS FOR A PARTICULAR PURPOSE, ARE HEREBY LIMITED TO 90-DAYS FROM THE DATE OF PURCHASE AND ARE SUBJECT TO THE CONDITIONS SET FORTH HEREIN. IN NO EVENT SHALL SEGA OF AMERICA, DREAMCAST INC., BE LIABLE FOR CONSEQUENTIAL OR INCIDENTAL DAMAGES RESULTING FROM THE BREACH OF ANY EXPRESS OR IMPLIED WARRANTIES. THE PROVISIONS OF THIS LIMITED WARRANTY ARE VALID IN THE UNITED STATES ONLY. SOME STATES DO NOT ALLOW LIMITATIONS ON HOW LONG AN IMPLIED WARRANTY LASTS, OR EXCLUSION OF CONSEQUENTIAL OR INCIDENTAL DAMAGES, SO THE ABOVE LIMITATION OR EXCLUSION MAY NOT APPLY TO YOU. THIS WARRANTY PROVIDES YOU WITH SPECIFIC LEGAL RIGHTS. YOU MAY HAVE OTHER RIGHTS WHICH VARY FROM STATE TO STATE.

Sega is registered in the U.S. Patent and Trademark Office. Sonic Adventure 2: Battle is a registered trademark or a trademark of Sega Corporation and its affiliates. All Rights Reserved. Original Game © SEGA CORPORATION / SONICTEAM , 2001. This game is licensed for use with The Nintendo GameCube System only. Copying and/or transmission of this game is strictly prohibited. Unauthorized rental or public performance of this game is a violation of applicable laws. Sega of America Dreamcast, P.O. Box 7639, San Francisco, CA 94120. All Rights Reserved. [www.sega.com](http://www.sega.com). Programmed in Japan. Made and printed in the USA.



**SEGA**

Sega of America, P.O. Box 7639  
San Francisco, CA 94120

SEGA is registered in the U.S. Patent and Trademark Office. Sega, Sonic The Hedgehog and Sonic Adventure are either registered trademarks or trademarks of Sega Corporation. ©2000, 2001 SEGA/SONICTEAM. All Rights Reserved. [www.sega.com](http://www.sega.com)

PRINTED IN USA