

The Navy's Own, Four-Page Picture Story of Pearl Harbor

DETROIT  TIMES

PAGE 1, PART 2

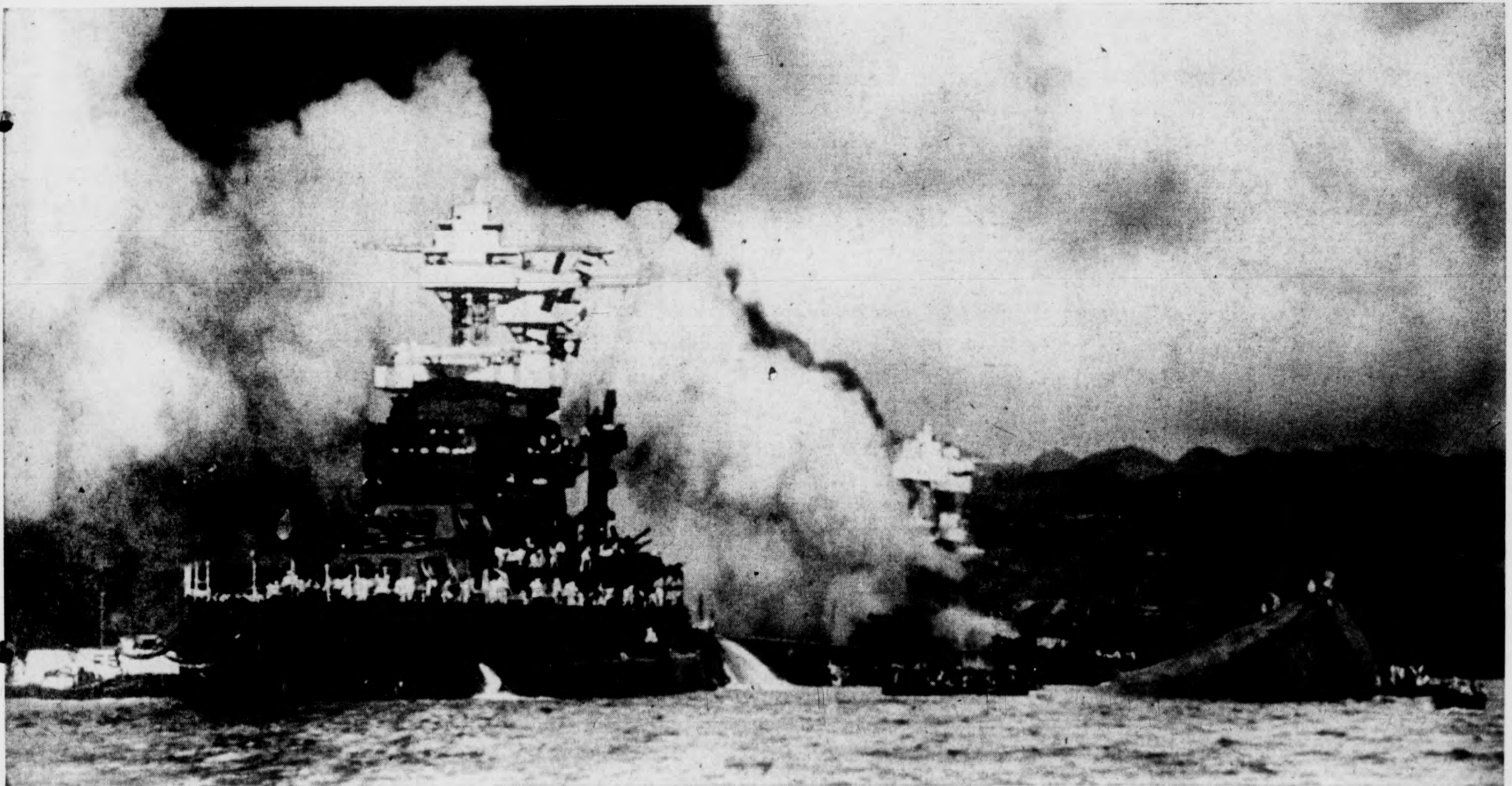
DECEMBER 6, 1942

Sports News in This Section



—Photo by U. S. Navy, Distributed by International News Photos.

Old Glory flying proudly in one of her darkest hours and over sailors at Pearl Harbor last December 7 risking their lives close up to the bomb-set flames roaring from both *West Virginia* and *Tennessee*.

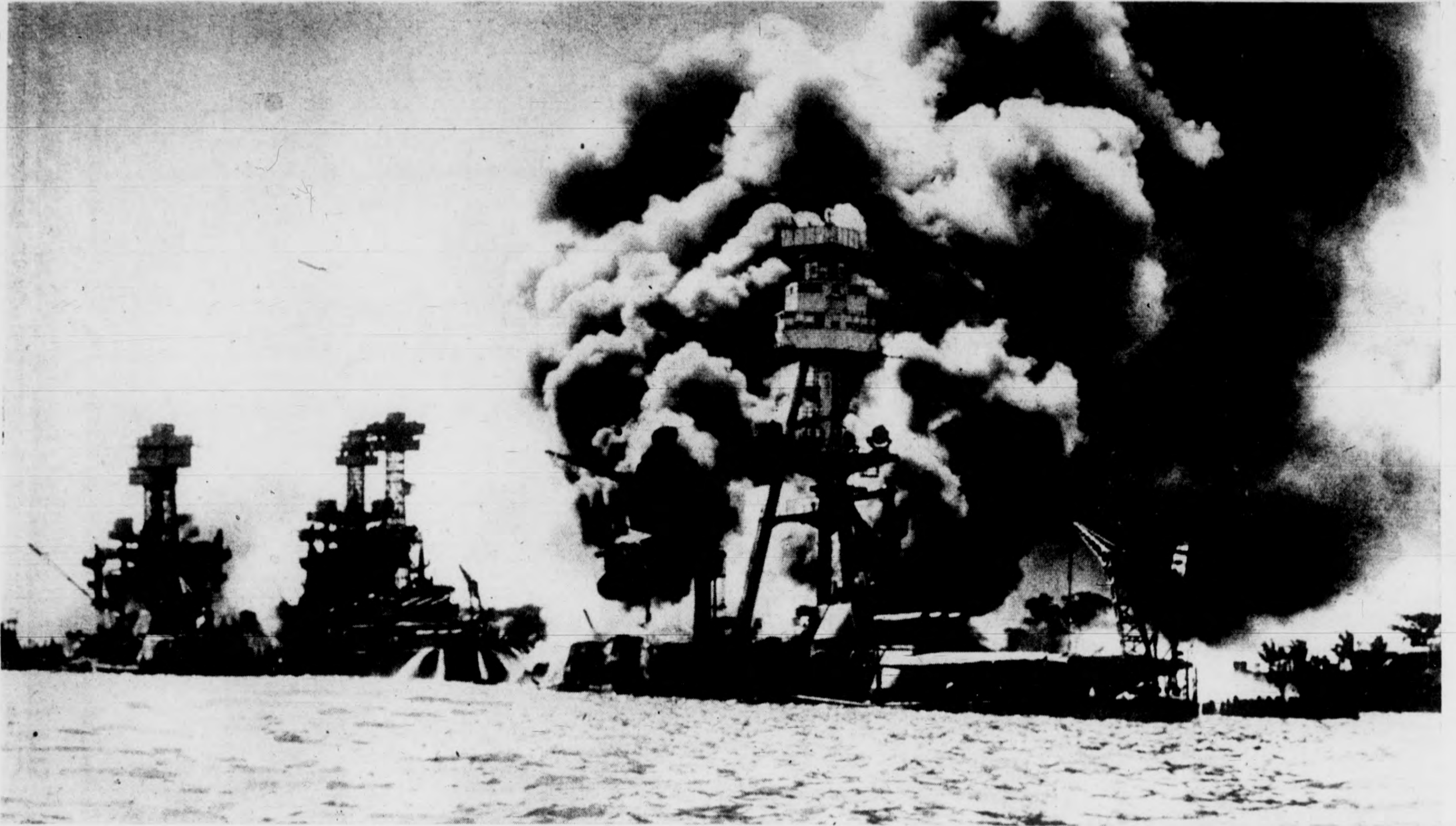


—Photo by U. S. Navy, Distributed by International News Photos.

Slightly-damaged 31,500-ton *U.S.S. Maryland* (first battleship to rejoin the fleet after repairs) in Pearl Harbor's flames. Behind her is another battleship, at right the capsized *Battleship Oklahoma*.

Continued on Next Page

A Scene Man Never Saw Before: Three Sunken U. S. Battleships



A scene unrivaled in modern naval warfare: three dreadnaughts all in a row and within speaking distance of each other in flames and sitting on the bottom of Pearl Harbor last December 7 after

Japan's bombing and torpedo planes left. In the foreground is 19,700-ton *Arizona*, only one of eight disabled battleships rated a total loss; in the middle the *Tennessee*, at the left the *West Virginia*.

—Photo by U. S. Navy, Distributed by International News Photos.

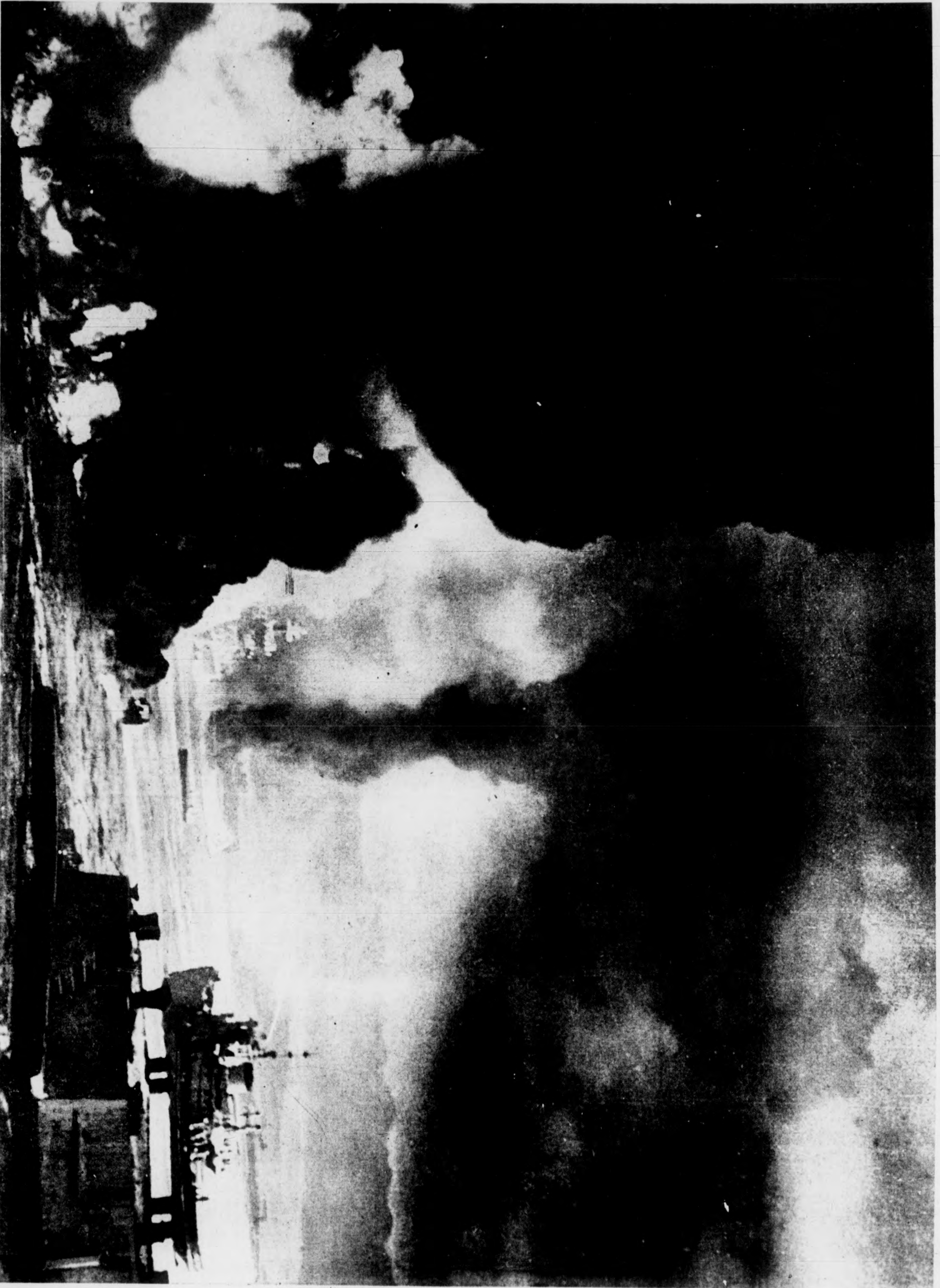


A tremendous explosion on the wreckage-littered naval air station at Pearl Harbor last December 7. The navy today announces that there were only 202 naval planes on Oahu—the Jap attack destroyed 177.

—Photo by U. S. Navy, Distributed by International News Photos.

Continued on Next Page

A Sea of Fire in a World Aflame: This Was the Appalling Scene at Pearl Harbor

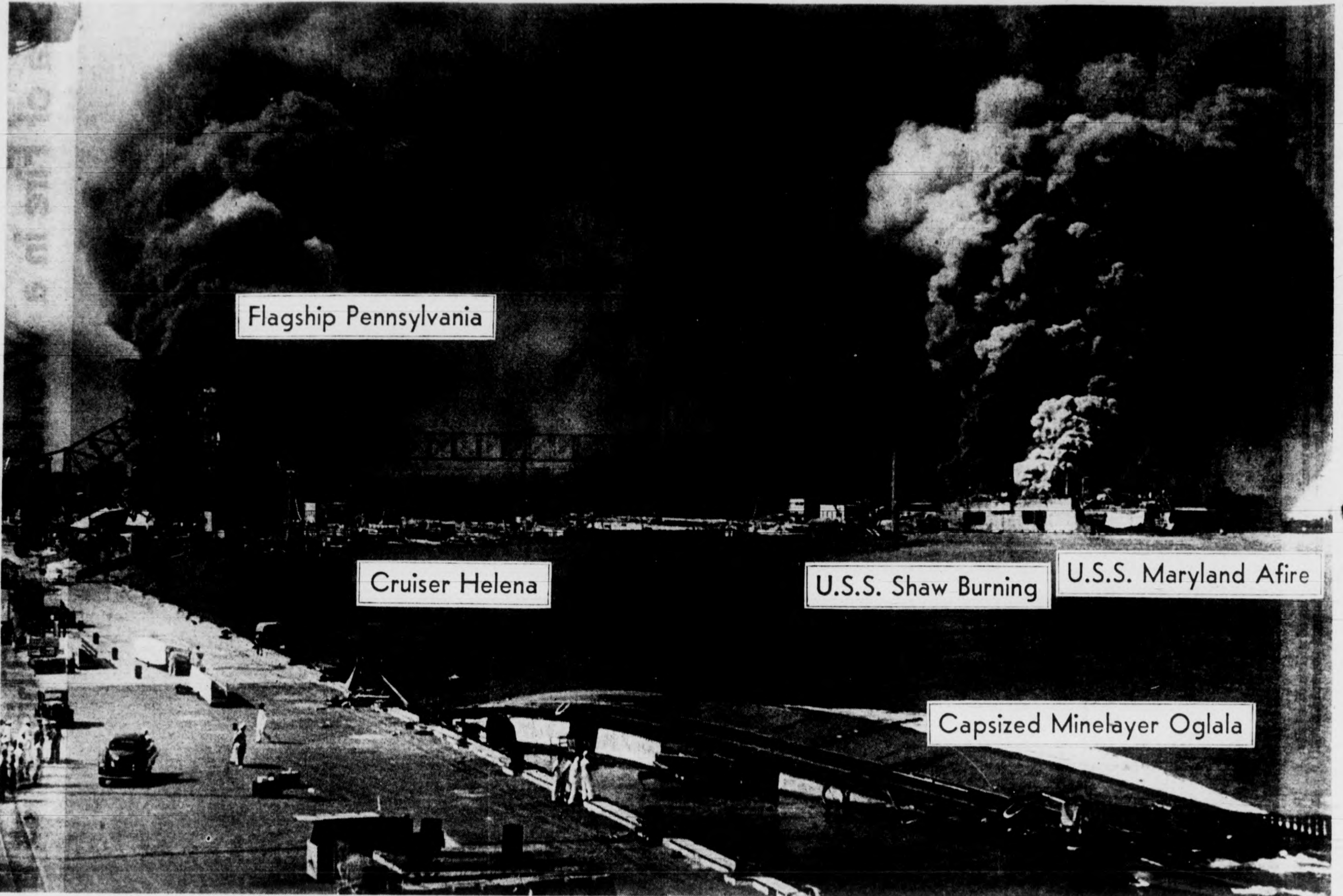


The very waters of Pearl Harbor in flames under a sky obscured by smoke pouring from the overturned and sunken hulls that only 90 minutes before had been the proud United States Pacific fleet, largest arm of the world's most powerful navy.

Now that fleet had not a single useful battleship, its biggest base was wrecked, only 25 planes (exclusive of the army's, attacked by the same raiders) based here could fly. In the middle is damaged *Maryland*, at the right of it capsized *Oklahoma*.

Photo by U. S. Navy. Reprinted by permission Navy Photo. Continued on Next Page

Pearl Harbor in the Noonday Sun, Its Ships Capsized and Afire



Flagship Pennsylvania

Cruiser Helena

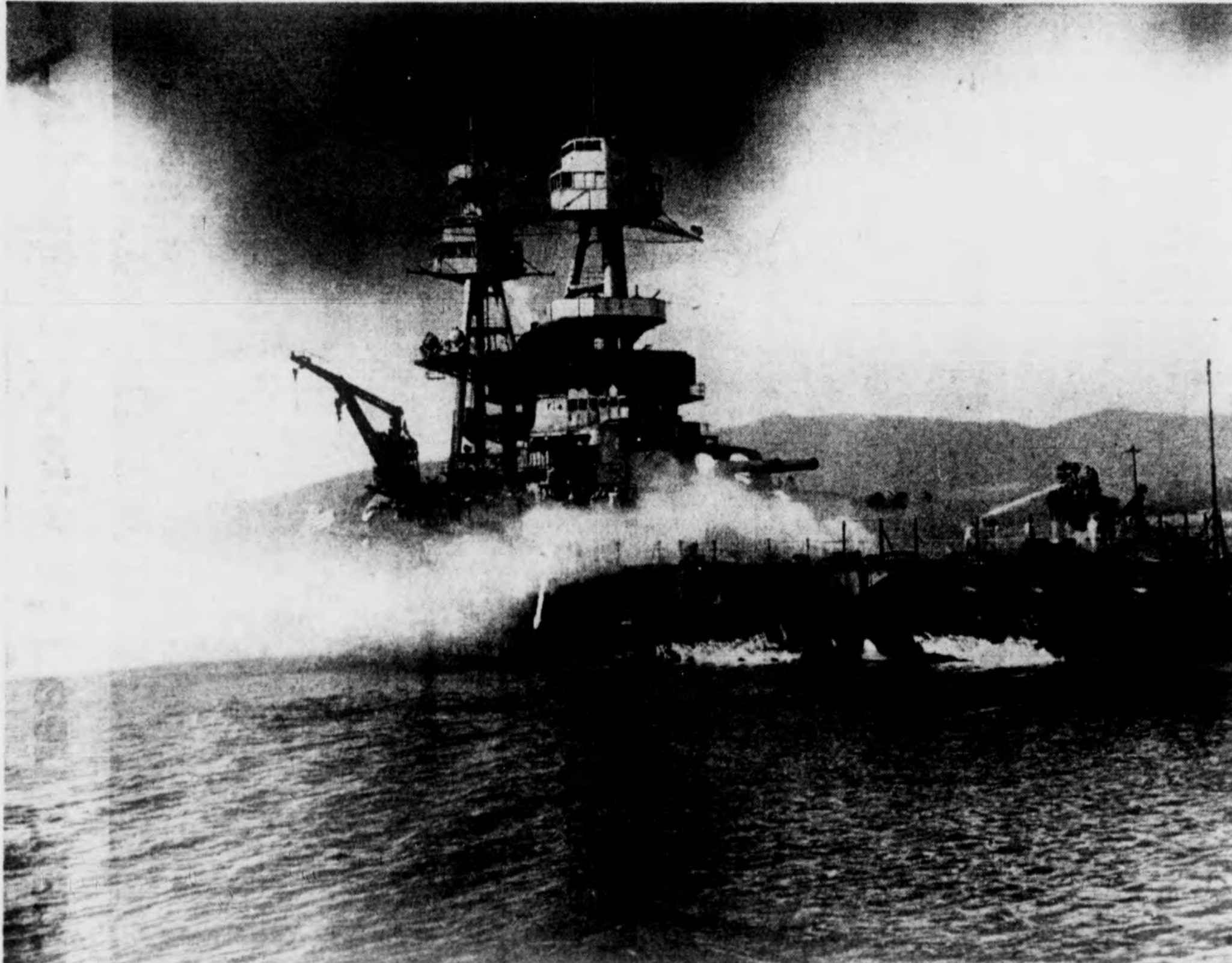
U.S.S. Shaw Burning

U.S.S. Maryland Afire

Capsized Minelayer Oglala

—Photo by U. S. Navy, Distributed by International News Photos.

A general view of Pearl Harbor last December 7 after the sun had climbed high and brought quiet, if not peace. Harassed crews still fought fires on most of the 19 vessels sunk or damaged, tried to repair war planes.



A naval tug trying to put out bomb-set fires aboard the U. S. S. Nevada, resting on Pearl Harbor's bottom. This battle-

—Photo by U. S. Navy, Distributed by International News Photos.

ship was of 29,000 tons, was commissioned in 1914 but had been modernized with new guns and tripod masts in recent years.



—Photo by U. S. Navy, Distributed by International News Photos.

Pearl Harbor's Drydock No. 1, destroyers Downes (left) and Cassin lying in ruins. To the rear is U. S. S. Pennsylvania, flagship of the fleet, bombed out of commission but damaged probably less than other battleships.