



NASA Strategic Planning *Integration*

Mary E. Kicza

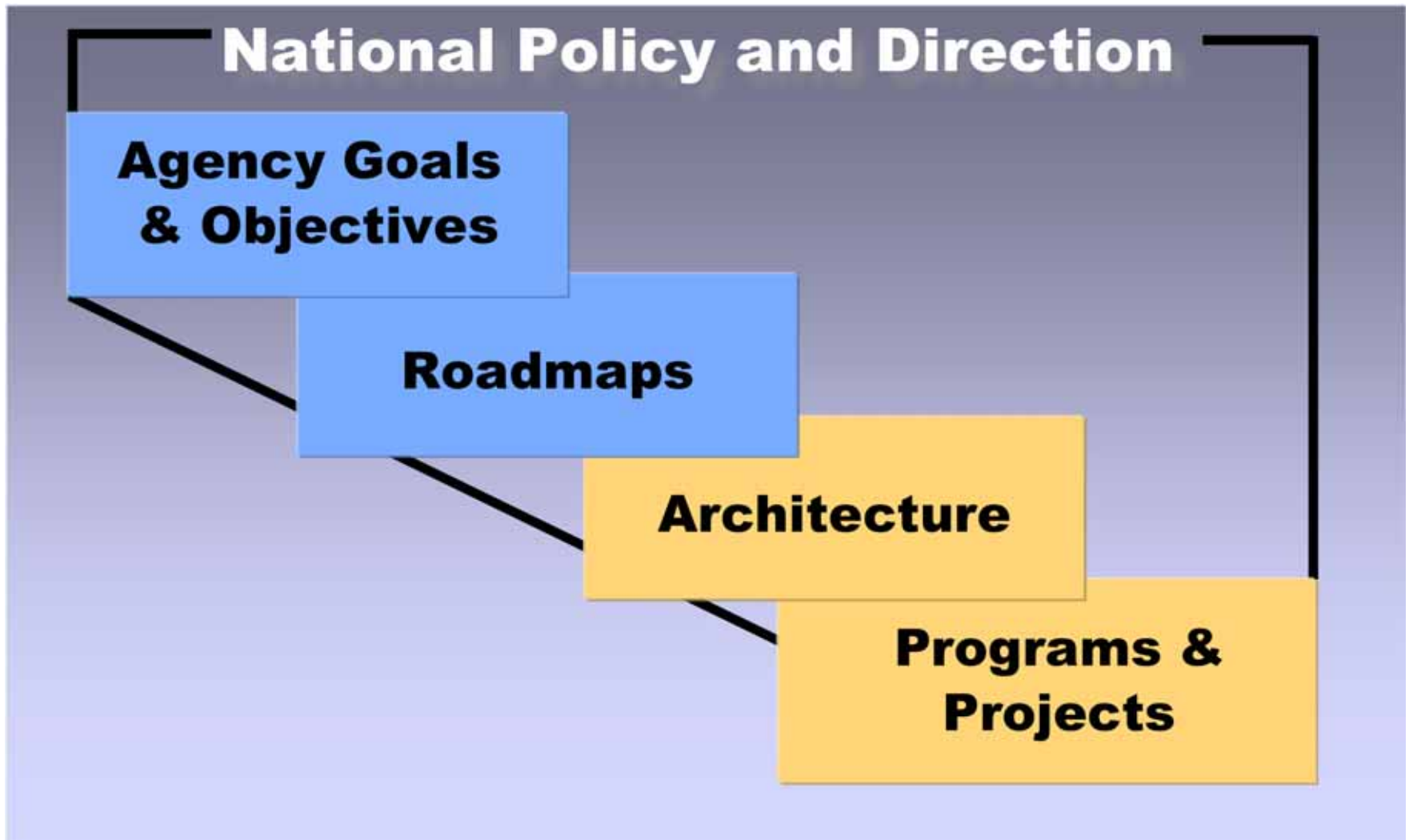
Associate Deputy Administrator for
Systems Integration

AIAA Space Exploration Conference

February 1, 2005

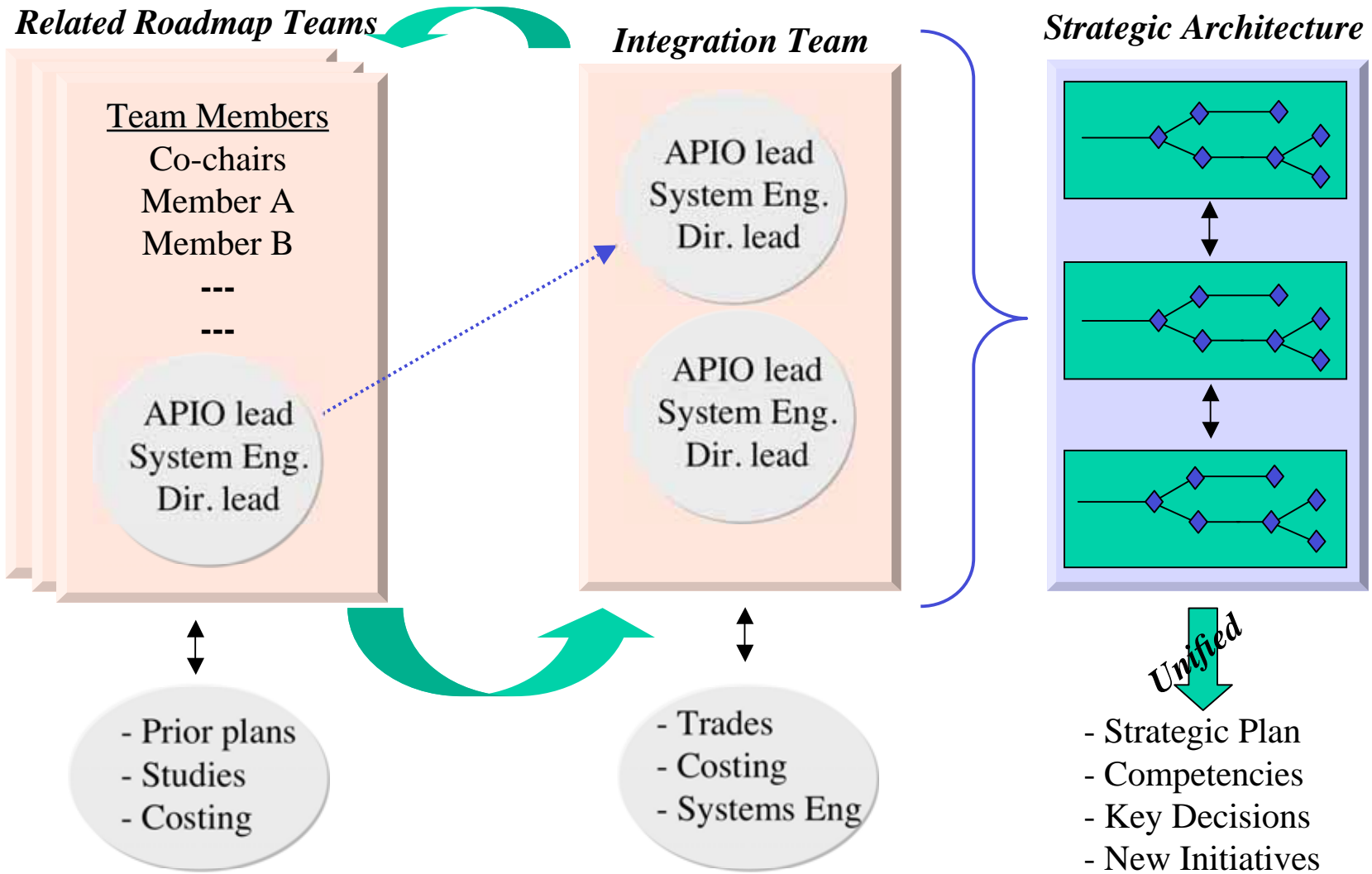


Strategic Planning Framework





Architecture Development





Roadmap Integration

- **Utilizing a structured systems engineering methodology for integration**
- **Assembling a systems engineering core team of Center systems experts, analysts, and academic educators to assess:**
 - **Critical sequences, key milestones, interdependencies**
 - **Capability gaps**
 - **Workforce and facility implications**
 - **Affordability, sustainability**
 - **Decisions or branch points**
- **Engaging outside experts as process development consultants**
- **Developing relational database, costing, and decision support tools (e.g. Design Systems Matrix) to probe key dependencies and relationships in and between roadmaps**



Agency Strategic Architecture



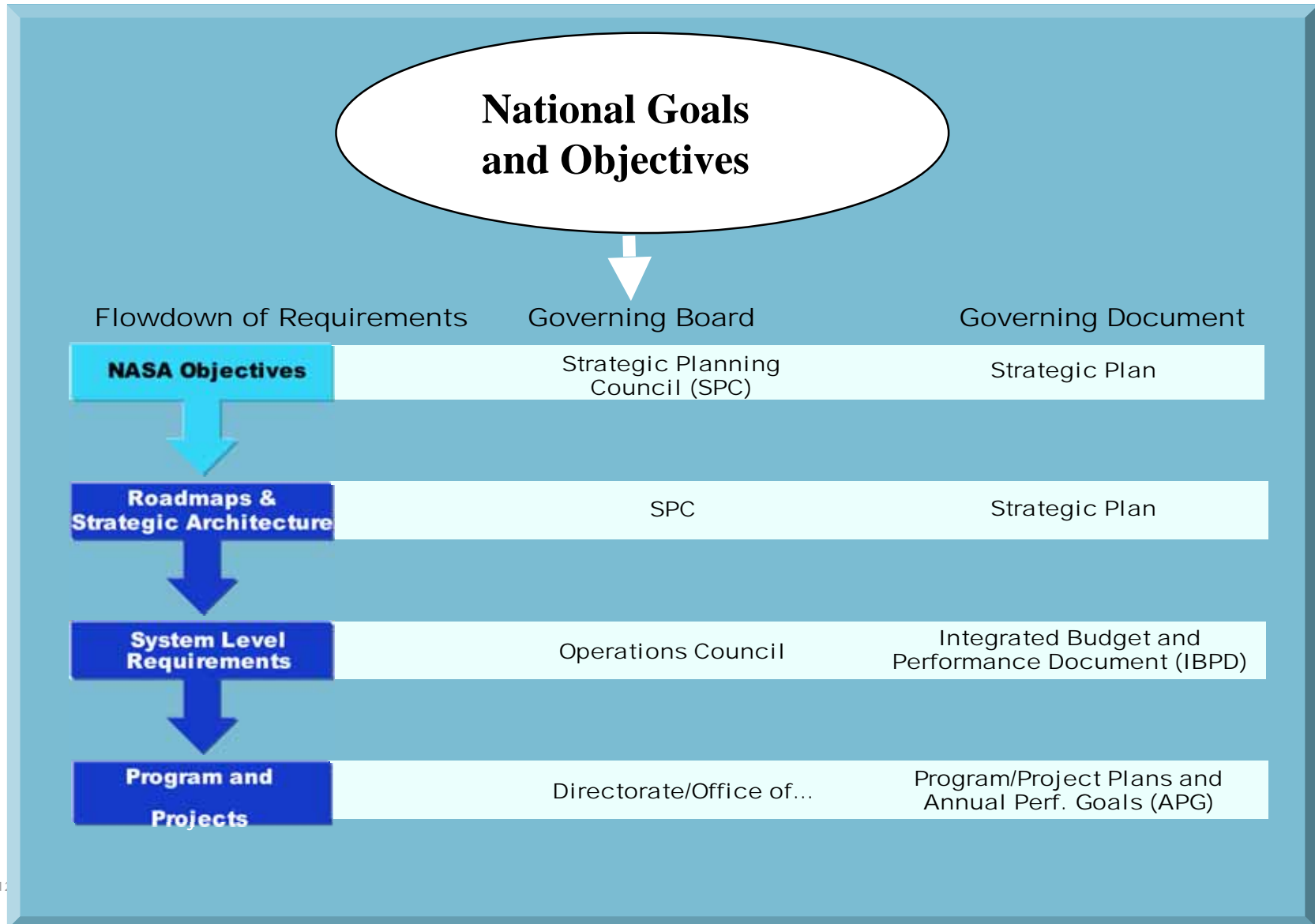


The Vetting Process

- **National Academy of Sciences/National Research Council will conduct reviews at mid-point and endpoint of the roadmap process**
 - Roadmaps will be available to the public on NASA's website
- **Architecture will be vetted through both the Agency advisory committees and the National Research Council**
 - Documented in summary fashion in the Agency 2006 issue of the Strategic Plan and available to the public
 - More detailed compendium available as a companion document at a later date



Agency Program Implementation Governance Strongly Linked to Strategic Goals





Summary

The Agency has:

- **Clear Administration policy and direction**
- **Agency Strategic Objectives identified and available on the web in early February**
- **Roadmap processes in place to identify the pathways to achieving Agency Strategic Objectives**
- **Integration team of space systems architects and educators formed to synthesize strategic architecture(s) for consideration by the Agency Strategic Planning Council**
- **Strategic planning and program integration activities that are strongly linked**
- **Actively engaged in transformation in a manner responsive to recommendations of President's Commission on Implementation of United States Exploration Policy**