

Giant cell arteritis

Category(ies): Pathology

Contributor: Meagan Seay, DO and Nasreen Syed, MD

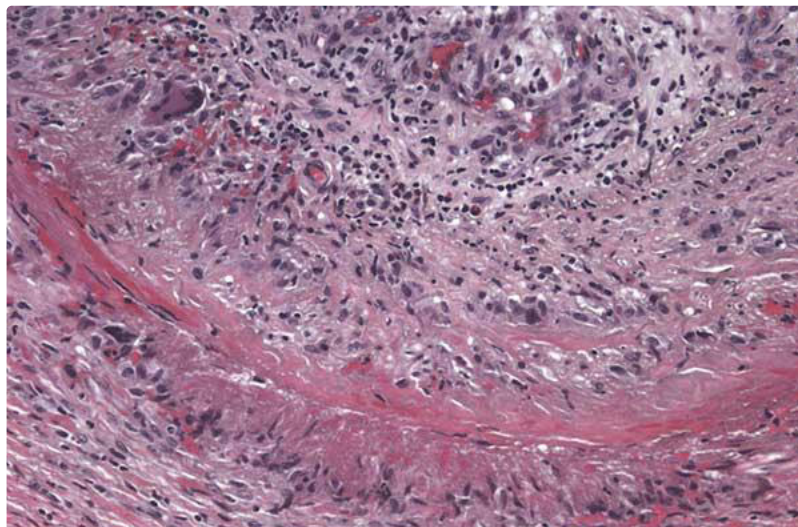
Granulomatous inflammation can occur in the blood vessel wall leading to occlusion. [Temporal artery biopsy](#) is performed for diagnosis. A long specimen (at least 2 cm) is important due to skip lesions.



EYE ROUNDS.ORG

[Enlarge](#)

[Download](#)





[Enlarge](#) [Download](#)



EYE ROUNDS.ORG

Verhoeff-Van Gieson stain shows disruption of the internal elastic lamina.

[Enlarge](#) [Download](#)

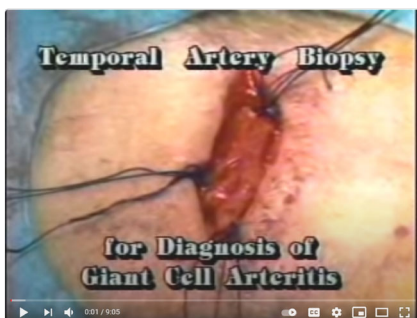
Image Permissions:



Ophthalmic Atlas Images by EyeRounds.org, The University of Iowa are licensed under a [Creative Commons Attribution-NonCommercial-NoDerivs 3.0 Unported License](https://creativecommons.org/licenses/by-nc-nd/3.0/).



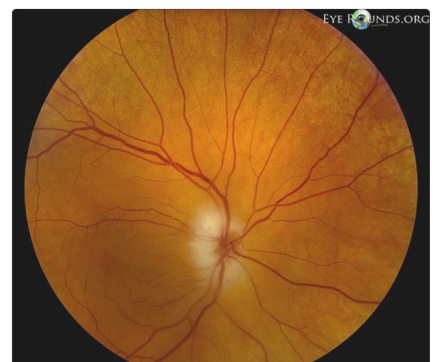
Related Articles



[Related Tutorial: Temporal Artery Biopsy Tutorial](#)



[Related Atlas: Giant Cell Arteritis, \(GCA\), Temporal Arteritis](#)



[Related Atlas: Arteritic anterior ischemic optic neuropathy \(AAION\) secondary to giant cell arteritis \(GCA\)](#)

Address

University of Iowa
Roy J. and Lucille A. Carver College
of Medicine
Department of Ophthalmology and
Visual Sciences
200 Hawkins Drive
Iowa City, IA 52242

[Support Us](#)

Legal

Copyright © 2019 The University of
Iowa. All Rights Reserved
[Report an issue with this page](#)
[Web Privacy Policy](#) |
[Nondiscrimination Statement](#)

Related Links

[Cataract Surgery for Greenhorns](#)
[EyeTransillumination](#)
[Gonioscopy.org](#)
[Iowa Glaucoma Curriculum](#)
[Iowa Wet Lab](#)
[Patient Information](#)
[Stone Rounds](#)
[The Best Hits Bookshelf](#)

EyeRounds Social Media

Follow



Receive notification of new cases,
[sign up here](#)

[Contact Us](#)

[Submit a Suggestion](#)