

Arlington Street Church, *Unitarian Universalist*

SUNDAY, OCTOBER 14TH, 2012

PRELUDE

Allegro con brio, from *Sonata in C Major* (“Waldstein”), *Op. 53*

Nick Place, piano

Ludwig van Beethoven (1770-1827)

INTROIT

In the Quiet and the Stillness *Rosalyn Kalmer*

Zachary Ballard, baritone

In the quiet and the stillness of the morning,

In the quiet and the stillness of the day,

In this quiet, holy place, I find blessed peace within,

In the quiet and the stillness of the morning.

WELCOME

CHALICE LIGHTING ... Laura Evonne Steinman & Our Children

PARISH HIGHLIGHTS AND GREETINGS

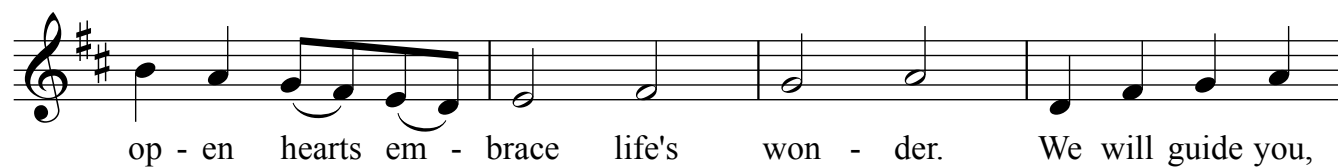
***HYMN 1015** (in the teal hymnal)

I Know I Can Go On

CHILDREN’S BLESSING

Children’s Benediction text: *Barbara Pescan*

music: *Bart Bradfield*



*Following the Children’s Blessing, all children are
always welcome to join us for Children’s Religious Education!*

COMMUNITY CANDLES OF SORROW & JOY

You are invited to share your sorrows and joys with the congregation by filling out a Candle Card in the back pew on the right-hand side of the sanctuary. Candle Cards are collected until the beginning of the first hymn. After the service, Candle Cards are posted downstairs during coffee hour. You may also submit a candle by Saturday night at the church website, ASCBoston.org, by clicking on “Worship.”

Some of us pray with words, some of us pray through action, and some of us use words other than prayer to describe our connection to the divine and to one another. As you feel called, please join us in singing the chorus of *Healing Prayer*.

Healing Prayer music: *Nick Page* (b. 1952)
text: *African American Spiritual "Balm in Gilead" and Nick Page*
Glorivy Arroyo, mezzo soprano; Jonathan Price, tenor

The image shows musical notation for the 'Healing Prayer' chorus. It consists of two staves: 'Drone' and 'Melody'. Both staves are in 3/4 time and have a key signature of three flats (B-flat, E-flat, A-flat). The Drone staff contains a series of quarter notes: B-flat, E-flat, A-flat, B-flat, E-flat, A-flat. The Melody staff contains a series of notes: B-flat, E-flat, A-flat, B-flat, E-flat, A-flat, B-flat, E-flat, A-flat, B-flat, E-flat, A-flat. The lyrics 'We pray' are written under the first two notes of the melody, and 'We' is written under the last note. There is a triplet of eighth notes (B-flat, E-flat, A-flat) under the 7th, 8th, and 9th notes of the melody.

AFFIRMATION AND COVENANT

| | |
|---|---|
| Love is the spirit of this congregation, And service is our gift. This is our great covenant: To dwell together in peace, To speak our truths in love, And to help one another. | El amor es el espíritu de nuestra congregación Y el servicio es nuestro regalo. Esto es a lo que nos comprometemos: Convivir en paz, Hablar nuestras verdades con amor, Y ayudarnos los unos a los otros. |
|---|---|

***HYMN 86**

Blessed Spirit of My Life

SERMON

Doing What Comes Hard Rev. Kim K. Crawford Harvie

SILENT REFLECTION, MEDITATION, AND PRAYER

ANTHEM

Hope *Ysaye M. Barnwell* (b. 1946)
If we want hope to survive in the world today,
Then every day we've got to pray on, pray on,
Pray on.

OUR SHARED RESPONSIBILITY

Over 300 pledging members and friends support the work of Arlington Street Church with commitments averaging \$20 a week plus volunteer service. Whatever you give is greatly appreciated. Please consider a generous donation today! Contributions placed in an envelope will be credited toward your pledge or gift.

OFFERTORY

Eusebius, from *Carnaval, Op. 9* *Robert Schumann* (1810-1856)
Nick Place, piano

***HYMN 100**

I've Got Peace Like a River

***BENEDICTION AND EXTINGUISHING THE CHALICE**

***CHORAL BENEDICTION** *(sung twice; please join us!)*

When You Walk From Here text: *Linnea Good*
music: *Tom Witt, arr. Buckles*

When you walk from here, When you walk from here,
Walk with justice, Walk with mercy, And with God's humble care.

POSTLUDE

Praeludium, from *Carnaval, Op. 9* *Robert Schumann* (1810-1856)
Nick Place, piano

**You are invited to stand as you are willing and able.*

TODAY in CRE

Children's Religious Education (CRE)

Thanks to everyone who came to the CRE committee meeting this morning!

In CRE today, we will be outside again, this time planting some flower bulbs that will rest this winter and then bloom in the springtime! All helping hands are welcome!

Note: At 1:00 PM today, there will be a gardening meeting for anyone interested in helping out with the garden. All are welcome!

SPECIAL SUNDAYS COMING UP!

El Dia de los Muertos ~ Day of the Dead–October 28th

Please plan to join in our annual observance of Day of the Dead, All Saints Day, and All Souls Day. We will celebrate the lives of beloved family and friends who have gone before us, calling out their names to affirm their continuing presence in our lives.

You are welcome to bring photographs and other mementos to place on the altar. Children of all ages are invited to wear costumes and take part in the costume parade! All are welcome!

Bring A Friend Sunday–November 4th

Bring your friends and families to a Sunday dedicated to sharing the spirit, the joy, and the nourishment of our worship together. Invite those who are curious or those looking for a new spiritual home to experience Arlington Street.

There is a lot going on November 4th! In addition to our regular events, you and your friends can attend a concert by the Longwood Symphony Orchestra for Haiti relief in our Sanctuary, join our social action team in a nearby prayer vigil for keeping immigrant families together, or take a tour with our CRE folks to the Taza Chocolate Factory in Somerville. Yum!

What a great day to experience Arlington Street! All are welcome!