

 **BASF**

We create chemistry



## Why partner with BASF for your AutoCat recycling needs?

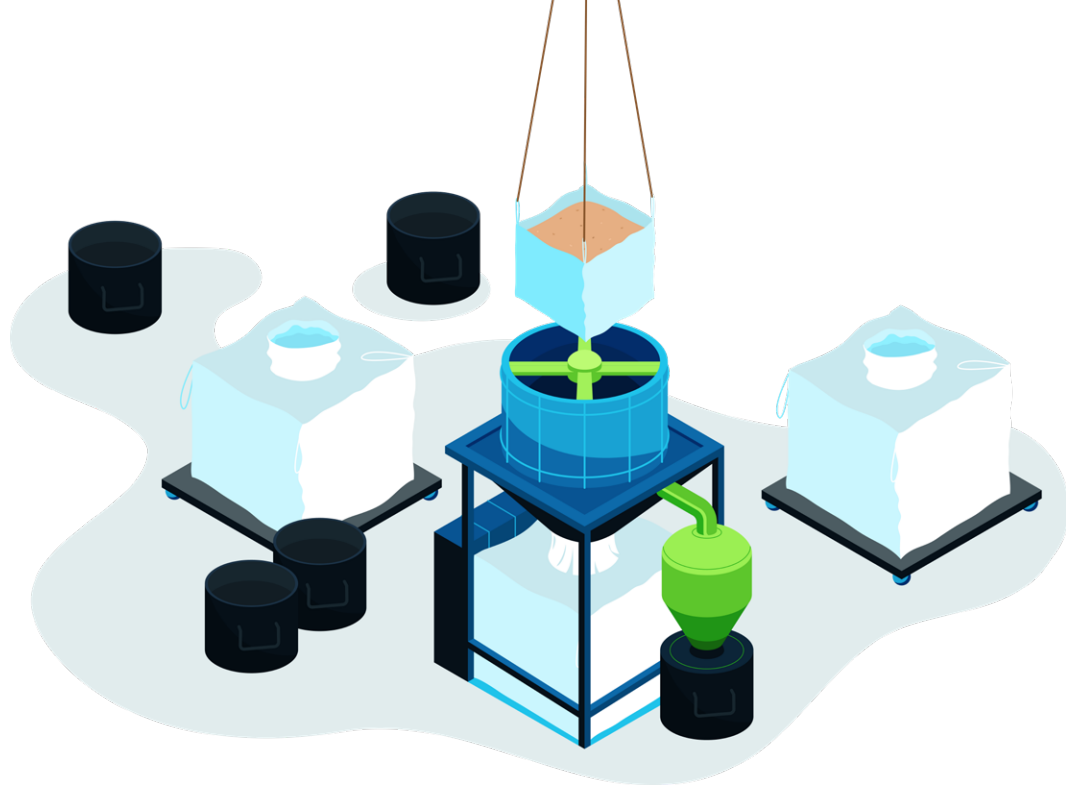
With sophisticated sampling and assaying capabilities, a strong commitment to customer service, and global insight into the Platinum Group Metals (PGM) market, BASF helps you navigate the refining process with confidence.

We partner with customers around the world to sample and assay their precious metals with accuracy and integrity. The whole process is safe, secure, and transparent.

For you, that means peace of mind from start to finish – and the best possible value for your precious metals.



## SAMPLING



# Sampling at BASF

Our sampling process ensures samples are representative of the entire lot. With our focus on transparency and integrity, you can feel confident in the results.

## Lot Integrity

Our thorough process ensures metal samples are homogenous and highly representative of the bulk lot. Your material is weighed at each step of the process to preserve the integrity of the lot as much as possible.

## Representative Samples

We evaluate each lot individually to determine best-fit sample preparation, providing superior accuracy compared to one-size-fits-all methods. Your material is then prepared and sampled using state-of-the-art equipment and techniques.

## ISO Accredited Methods & Practices

We are one of only a few refiners who employ ISO 17025 accredited methods for PGM analysis, and ISO 17043 accreditation to regularly test the proficiency of our labs.

## Sustainable Solutions

BASF proudly promotes sustainable growth and environmental responsibility. As a circular economy becomes increasingly important, we are in a unique position to support our partners with sustainable processes.



# Assaying at BASF

Our ISO-accredited analytical lab pairs world class analytical methods and instruments with industry leading analytical scientists to provide you with the most accurate and repeatable results possible.

This gives you transparent results you can trust.

## World-Renowned Lab

Our independent assay laboratory is recognized around the world. Its state-of-the-art equipment, instruments, and facilities represent the highest standards in the industry.

## Precise Techniques

Our techniques use highly sensitive instrumentation which screens out and eliminates interferences.

## Global Team of Experts

We elect top chemists from 5 sites across the globe to share and align on assaying best practices. That's how we provide consistent, accurate analytical results at any site in our global recycling network.

## Methodology

We routinely undertake round-robins to align with other reputable independent labs. With rigorous statistical standards, we deliver the highest level of precision and accuracy in the industry.

## Highly Qualified Chemists

Our analytical chemistry experts are trained in sophisticated PGM analysis methods and techniques. Each year, chemists must pass strict qualification standards in accordance with our ISO-17025 Quality Management System.



## Lot Witnessing

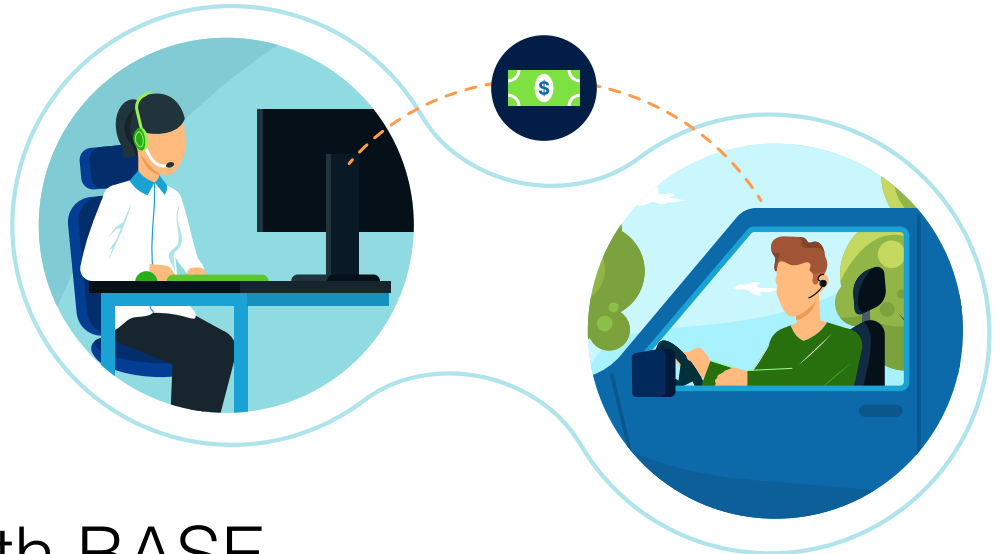
BASF's Lot Witnessing program allows customers to watch our sampling and assaying processes in action. See firsthand how we combine accuracy, transparency, and ISO accreditation to provide the best possible return on your materials.

## Continuous Investment

We continually invest in our assets, facilities, and people to optimize our processes and improve quality control.



## TRADING



# Trading with BASF

As part of our Full Loop approach, BASF offers a full package of physically delivered PGM products and information about those products and the PGM market.

- ✓ Market insight from experts in PGM market trends.
- ✓ Secure supply of recycled PGMs with our diverse sourcing strategy.
- ✓ Engelhard Industrial Bullion (EIB) pricing published daily online.
- ✓ Worldwide market access 24 hours a day, 7 days a week.
- ✓ Stable and secure with financial strength and a better credit rating than most banks.
- ✓ Multiple settlement options including spot sales, physical forwards, and supply contracts.
- ✓ Pool accounts allow you to retain PGMs in a secure account held by BASF.

**Ready to get started?** Contact BASF to recycle your precious metals with confidence.

### Americas

Adam Lazewski +1-248-205-6120  
[adam.lazewski@basf.com](mailto:adam.lazewski@basf.com)

### Asia Pacific

Rohit Pitale +91 82 9171 0608  
[rohit.pitale@basf-catalystsmetals.com](mailto:rohit.pitale@basf-catalystsmetals.com)

### Europe, Middle East, Africa

Ben Browning +44 7767 006430  
[ben.browning@basf-catalystsmetals.com](mailto:ben.browning@basf-catalystsmetals.com)

### BASF Corporation

25 Middlesex / Essex Turpike, Iselin  
New Jersey, 08830, USA



No information in this document is intended to or should be construed as BASF engaging in activities regulated by and/or requiring registration with the Commodity Futures Trading Commission, or any other federal or state agency. Information is presented for informational purposes only, should not be construed as advice from BASF, and does not necessarily reflect the views and opinions of BASF or its management. All views and opinions are from public sources, are not verified, and BASF neither represents nor warrants that they are accurate, complete, or timely. BASF disclaims any duty to update information and will not be liable for errors or omissions or damages arising from its use. Customers make all decisions on their own, independent of BASF, and it is therefore recommended that they seek the advice of a qualified professional before making such decisions. Further, no information presented can be used or relied upon to make claims about net zero or any greenhouse gas or other emission reductions. © 2023 BASF