

Safety Instructions

Important Safety Instructions

SAVE THESE INSTRUCTIONS – This manual contains important safety and operating instructions for the car charger of Roav SmartCharge F3 (Model R5132).

Please read and understand all instructions before using this product. If damage is caused by failure to follow the instructions, the warranty does not apply.

- Read all instructions and cautionary markings before using this product.
- Do not expose to rain, moisture, or snow.
- Use of an attachment is not recommended or sold by the manufacturer may result in a risk of fire, electric shock, or injury to persons.
- Do not operate this car charger if it has received a sharp blow, been dropped, or otherwise damaged in any way; take it to a qualified service person.
- Do not disassemble this car charger; take it to a qualified service person when service or repair is required. Incorrect reassembly may result in a risk of electric shock or fire.
- To reduce risk of electric shock, unplug this car charger before attempting any maintenance or cleaning. Turning off controls will not reduce this risk.
- To reduce risk of fire or electric shock, do not interconnect output terminations.

- Avoid long exposure to direct sunlight, which may cause damage to the device.
- Exposing this product to open flames may cause it to explode.
- Do not use this product in strong magnetic fields.
- Use a dry, soft lint-free cloth to clean. Do not use any corrosive cleaner or oil to clean.
- CAUTION - For continued protection against risk of fire, replace only with the same type and ratings of fuse, fuse rating is 63V DC / 7A.
- Always obey traffic laws and pay attention to the road. Do not attempt to use this device while driving, as some features are limited while the vehicle is in motion. Failure to pay full attention to the operation of your vehicle could result in death, serious injury or property damage. You assume total responsibility and risk for using this device.

Consignes de sécurité importantes

CONSERVEZ CES CONSIGNES - Ce manuel contient d'importantes instructions de sécurité et d'utilisation relatives au chargeur de voiture modèle R5132.

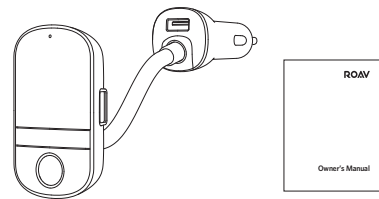
Veuillez lire et comprendre toutes les instructions avant d'utiliser ce produit. Si le non-respect des instructions entraîne des dommages, la garantie ne s'appliquera pas.

- Lisez toutes les instructions et les mises en garde avant d'utiliser ce produit.
- Ne pas exposer à la pluie, l'humidité ou la neige.
- L'utilisation d'un accessoire non recommandé ou vendu par le fabricant peut entraîner un risque d'incendie, de choc électrique ou de blessure.

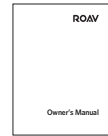
- Ne pas utiliser ce chargeur de voiture s'il a reçu un coup violent, s'il est tombé ou s'il a été endommagé de quelque façon que ce soit ; l'apporter à un technicien qualifié.
- Ne pas démonter ce chargeur de voiture ; l'apporter à un technicien qualifié lorsqu'une réparation est nécessaire. Un réassemblage incorrect peut entraîner un risque d'électrocution ou d'incendie.
- Pour réduire les risques d'électrocution, débrancher le chargeur de voiture avant d'effectuer toute opération d'entretien ou de nettoyage. La désactivation des commandes ne réduit pas ce risque.
- Pour réduire les risques d'incendie ou d'électrocution, ne pas interconnecter les terminaisons de sortie.
- Éviter toute exposition prolongée à la lumière directe du soleil, qui pourrait endommager l'appareil.
- L'exposition de ce produit à des flammes nues peut provoquer son explosion.
- Ne pas utiliser ce produit dans des champs magnétiques puissants.
- Utiliser un chiffon sec, doux et non pelucheux pour le nettoyage. Ne pas utiliser de nettoyant corrosif ni d'huile.
- ATTENTION - Pour une protection continue contre les risques d'incendie, ne remplacer le fusible que par un fusible de même type et de même spécification. Le fusible utilisé est de 63V DC / 7A.

Note: Please contact our customer service center if Roav SmartCharge F3 cannot fit into your car's cigarette lighter socket. You can return your Roav SmartCharge F3 for a full refund.

What's Included

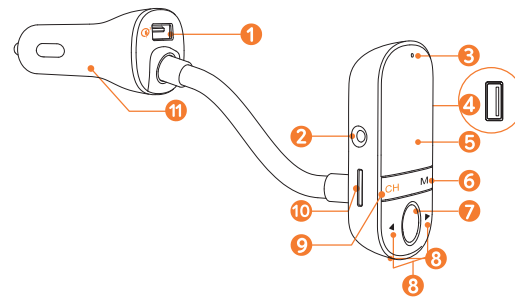


Roav SmartCharge F3



Manual

At a Glance



- 1 Quick Charge 3.0 USB port
- 2 AUX socket
- 3 Microphone
- 4 USB port
- 5 LED display
- 6 M / Mode button
 - Press to switch between different modes.
- 7 / Multi-function button
- 8 /
- 9 CH
- 10 MicroSD card slot
- 11 Adapter

Press and hold for 5 seconds to power on/off.

LED Display Guide

LED Display	Status
NOTCONNECTED * flashes	Bluetooth not connected
FM 107.5 * *The FM frequency may vary depending on the default setting.	Bluetooth connected
NO CARD 	No microSD card detected

LED Display	Status
WAITING... 	Reading a microSD card
CARD ERROR 	A card error has occurred and the card cannot be read.
NO USB DISK 	No USB drive detected
WAITING... 	Reading a USB drive
USB ERROR 	A USB error has occurred and the USB drive cannot be read.
	Press and hold M . When the USB drive or microSD card is read, music mode shows from left to right: Shuffle, Repeat All, Repeat One

The UI is subject to change without notice.

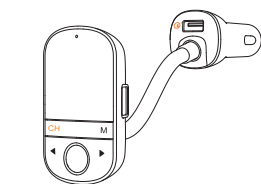
Getting Started

- 1 Plug Roav SmartCharge F3 into your vehicle's cigarette lighter socket.
- 2 Start your vehicle's engine.
 - The LED display will light up, and show the ROAV logo and current voltage of the car battery.

- 3 Download the Roav Charger app from the App Store (smartphones running iOS 10.2 or higher) or Google Play (smartphones running Android 5.0 or higher).



- 4 Enable Bluetooth on your smartphone and search for available Bluetooth devices.
- 5 Select "Roav F3_XXXX" and connect.
 - Once successfully connected, will stop flashing.

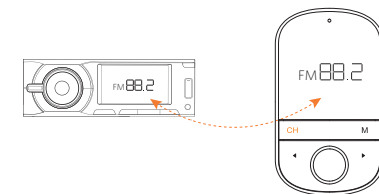


FM Transmitter

The Roav SmartCharge F3 allows you to connect your phone to your car's stereo via FM signal. There are two ways to set up:

1. Use the F3

- 1 Press and hold **CH** for one second when using the F3 for the first time.
 - F3 begins to search an unoccupied FM frequency.
- 2 Turn on the FM radio in your car and tune it to the FM frequency set on the F3.
- 3 To customize your FM frequency:
 - a. Press **CH** on F3.
 - FM frequency displays on the LED screen.
 - b. Press / to select a FM frequency. Make sure the transmitting frequency matches the frequency your radio is tuned to.



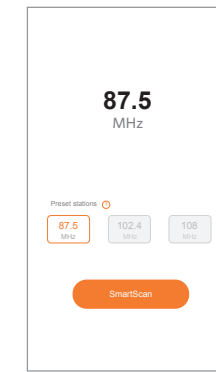


Model: R5132
51005001139 V02

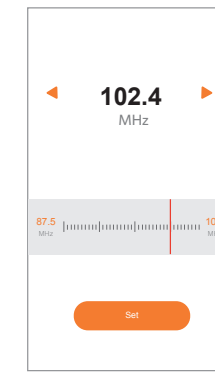
2. Use the Roav Charger App

Follow the on-screen instructions in the Roav Charger app to complete connection via FM Radio.

- 1 Tap the "FM radio".
- 2 Tap "SmartScan" (Figure a).
 - The Roav Charger App begins to search an unoccupied frequency.
- 3 Press and hold one preset station to customize stations.
- 4 Adjust the slider or tap ◀ / ▶ to choose a radio frequency (Figure b).



a



b

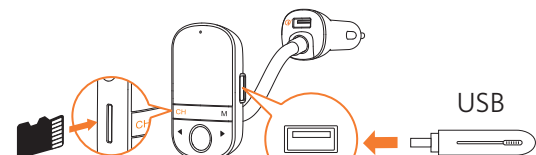
09

- 5 Tap "Set". Once chosen, the previous presets are replaced by the new ones.
- 6 Turn on the FM radio in your car and tune to a frequency that matches the frequency set on the Roav Charger App.
- 7 Play audio from your phone.
 - You will hear the audio from the car stereo.

You can also connect the car charger to your car's stereo by using a 3.5mm AUX cable.

Playing Music

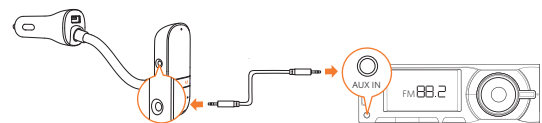
When the car charger F3 is successfully connected to your smartphone, you can press the multi-functional button to play music from your phone. Music can then be streamed to your car's sound system via FM transmitter or the AUX socket. You can also insert a USB flash drive or a microSD card to enjoy music that is stored on these devices.



10

Play / Pause	Press
Previous / Next track	Press ◀ / ▶
Select a music mode	Press and hold M . Press ◀ / ▶

To further reduce echo and background noise on your calls and music, you can connect a 3.5 mm AUX cable (not provided) to the AUX socket of the car charger and the AUX-In socket of your car's audio system.



11

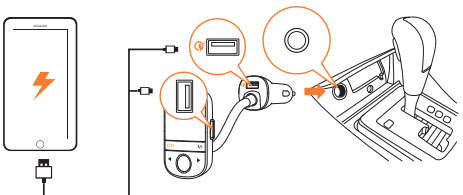
Hands-Free Calling

When the car charger is successfully connected to your smartphone, you can enjoy convenient hands-free calling.

Answer / End a call	Press
Reject a call	Press and hold for 2 seconds

Charging Your Devices

Roav SmartCharge F3 has two USB charging ports (one 5V/1A output port and one Quick Charge 3.0 port). You can charge two devices at the same time with a maximum output of 22W.



12

Specifications

Specifications are subject to change without notice.

DC input: 12V - 24V
 Quick Charge 3.0 output: 3.6V-6.5V \equiv 3A , 6.5V-9V \equiv 2A, 9V-12V \equiv 1.5A
 Bluetooth: V4.2
 Bluetooth transmission distance: 10 m / 32.8 ft
 USB audio format: .mp3 .wma .flac .wav
 FM frequency range: 87.5-108 MHz
 FM transmission range: 2 m / 78.7 in
 USB file system: FAT, FAT32, exFAT
 Operating temperature range: -20°C to 40°C/ -4°F to 104°F
 Storage temperature range: -40°C to 85°C/ -40°F to 185°F

13

Notice

FCC Statement

This device complies with Part 15 of the FCC Rules. Operation is subject to the following two conditions: (1) this device may not cause harmful interference, and (2) this device must accept any interference received, including interference that may cause undesired operation.

Warning: Changes or modifications not expressly approved by the party responsible for compliance could void the user's authority to operate the equipment.

Note: This equipment has been tested and found to comply with the limits for a Class B digital device, pursuant to Part 15 of the FCC Rules. These limits are designed to provide reasonable protection against harmful interference in a residential installation.

This equipment generates uses and can radiate radio frequency energy and, if not installed and used in accordance with the instructions, may cause harmful interference to radio communications. However, there is no guarantee that interference will not occur in a particular installation. If this equipment does cause harmful interference to radio or television reception, which can be determined by turning the equipment off and on, the user is encouraged to try to correct the interference by one or more of the following measures: (1) Reorient or relocate the receiving antenna. (2) Increase the separation between the equipment and receiver. (3) Connect

14

the equipment into an outlet on a circuit different from that to which the receiver is connected. (4) Consult the dealer or an experienced radio/TV technician for help.



FCC Radio Frequency Exposure Statement

The device has been evaluated to meet general RF exposure requirements. The device can be used in fixed/mobile exposure condition. The min separation distance is 20cm.

The following importer is the responsible party.
 Company Name: Fantasia Trading LLC
 Address: 9155 Archibald Avenue, Suite 202, Rancho Cucamonga, CA, 91730, US
 Telephone: +1 (909) 484 1530

Trademark

Apple and the Apple logo are trademarks of Apple Inc., registered in the U.S. and other countries. App Store is a service mark of Apple Inc., registered in the U.S. and other countries. Google Play and the Google Play logo are trademarks of Google LLC.

15

Customer Service

12-month limited warranty

* Please note that your rights under applicable law governing the sale of consumer goods remain unaffected by the warranties given in this Limited Warranty.

Lifetime technical support

support@goroav.com

+1(800) 988 7973 (US) Mon-Fri 9:00-17:00 (PT)

@GoRoav

@GoRoav

©Anker Innovations Limited. All rights reserved. ROAV and the ROAV logo are trademarks of Anker Innovations Limited, registered in the United States and other countries. All other trademarks are the property of their respective owners.

16