

Web 2.0 is Sharecropping

Jesse Vincent
jesse@fsck.com

(That's bad)

This *is* a rant.

The bad old days:



You farmed land you
didn't own...

...with tools you
couldn't really afford.

You paid for it with
part of your harvest...

A pretty sweet deal...

...until things got bad.

(Things always got bad.)

In a bad year, you got
further in debt to
the land owner.



The (more recent)
bad old days:



Things got a little
better:



Things weren't all rosy:

Windows

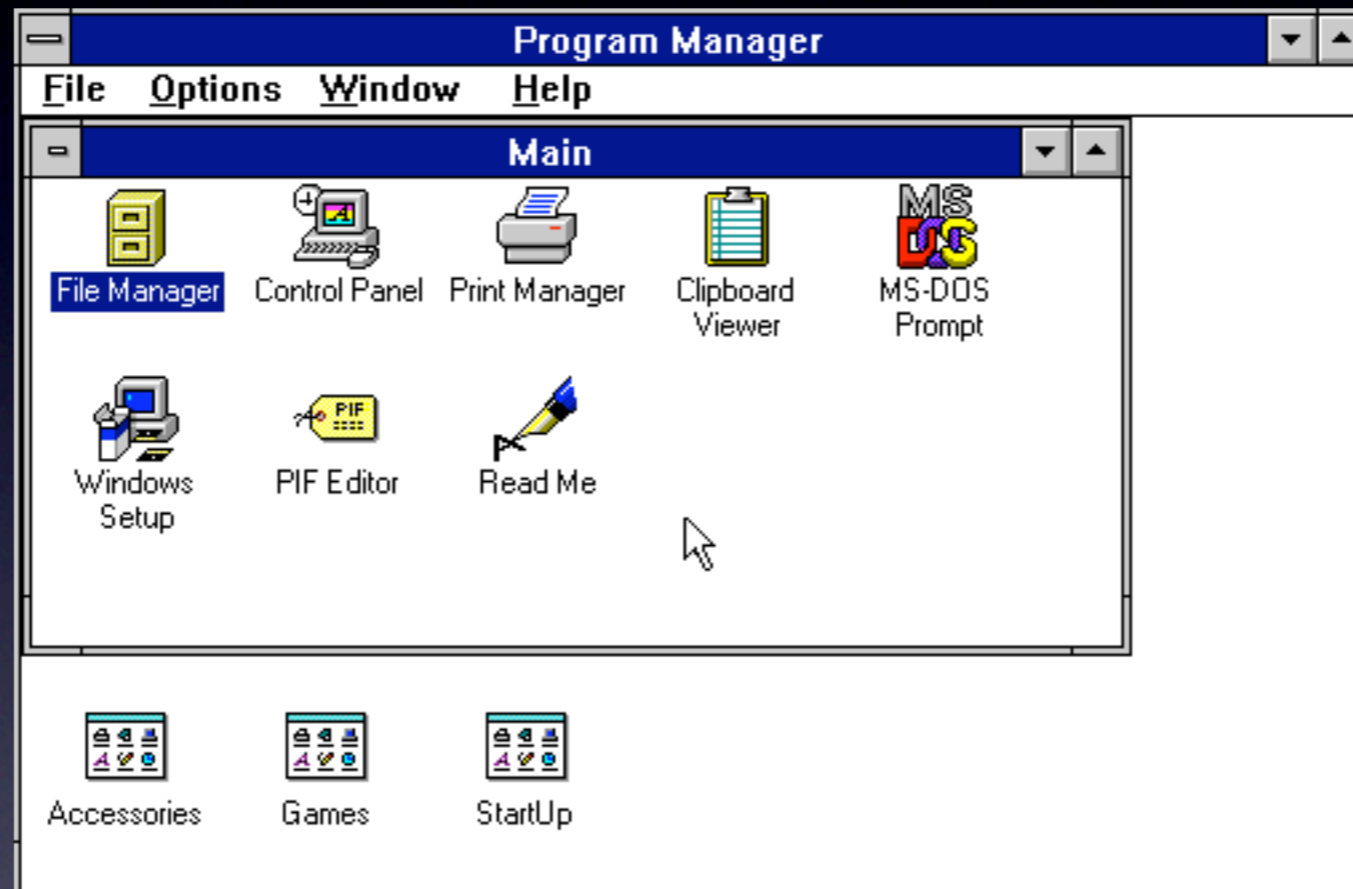
A fatal exception 0E has occurred at 0028:C0011E36 in UXD UMM(01) + 00010E36. The current application will be terminated.

- * Press any key to terminate the current application.
- * Press CTRL+ALT+DEL again to restart your computer. You will lose any unsaved information in all applications.

Press any key to continue

Sometimes new
versions of software
killed features...

...so you were locked in
to old versions.

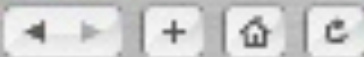


Things got 'better':



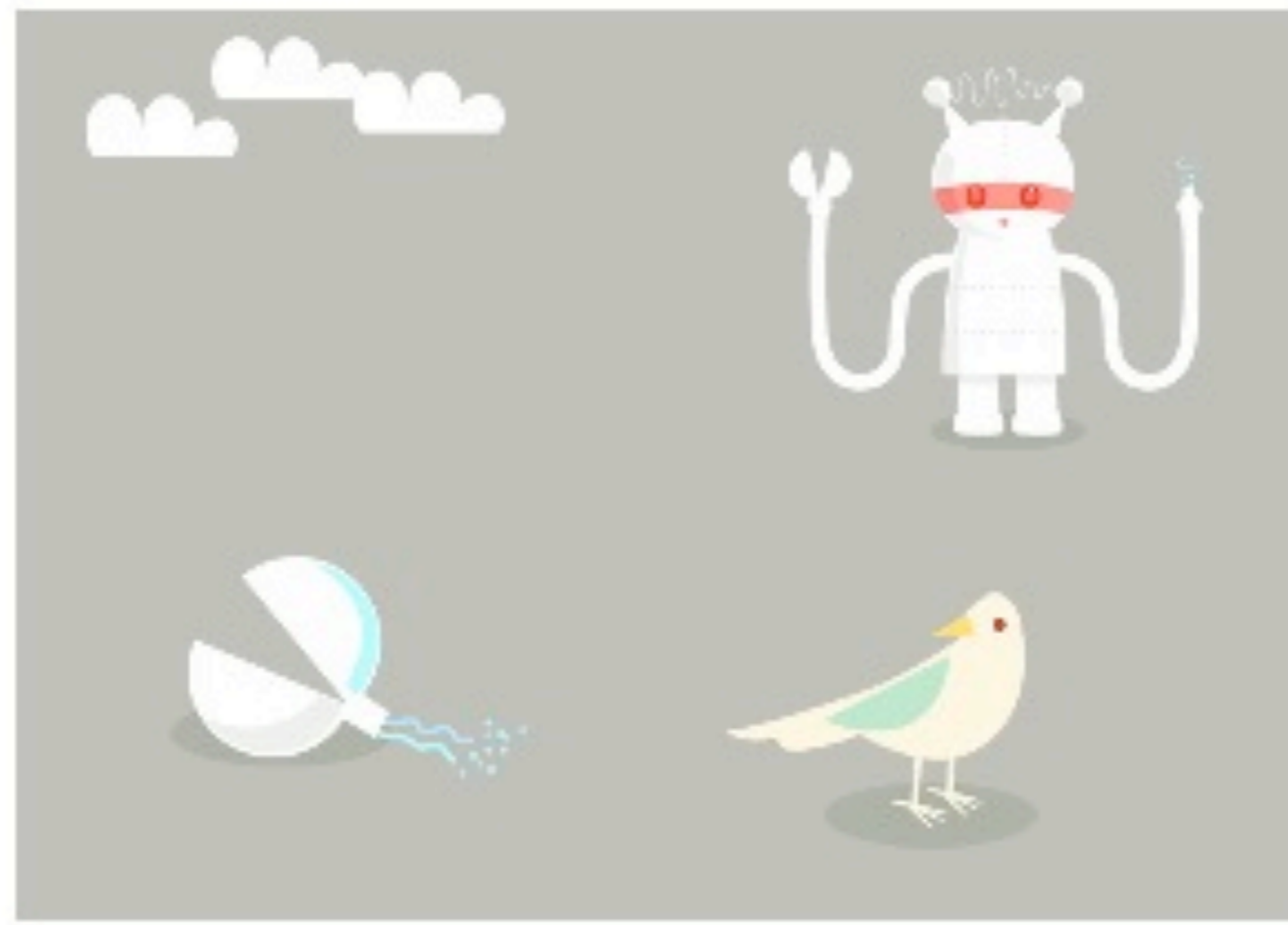
Now, things are getting
worse again...

What happens when
your favorite service
goes down?



Something is technically wrong.

Thanks for noticing—we're going to fix it up and have things back to normal soon.



...or stops accepting
new signups?

Q: Can I still sign up for a new Jaiku account?

A: A limited number of users will be able to sign up for an invitation to participate in continued beta-testing of the service. You can request an invite code [here](#).

...or gives all your data
to the secret police?

全球邮箱第一品牌



畅通

全球192个国家“邮件收发”畅通无阻



安全

独创反垃圾、防病毒引擎，有效拦截率达99.9%



通行证

一次登录，尽享网络电子商务、娱乐和全部雅虎服务

已拥有雅虎邮箱

邮箱地址

例如：mail@yahoo.com.cn
loveyahoo@yahoo.cn

密码

记住地址 下次自动登录

登录

注册

[忘记密码](#)

[手机邮箱](#)

还没有雅虎邮箱?

[立即注册](#)

邮箱动态

- 邮箱订阅全面上线，快来尝鲜，有新内容！
- 你玩了吗？魔兽世界新手卡注册就送！



You don't own the
services you use.

When the service provider cuts you off, that's it. No recourse.

Not so secret shame:
I'm a really bad zealot.

My calendar lives at
[google.com](https://www.google.com).

I make a web 2.0
tasklist service called
Hiveminder.com

Hiveminder™

Collaborative todo lists that work the way you do.

1. Create

Braindump your tasks, tag them, set due dates, and attach notes

2. Share

Set up reminders for yourself, create groups, and share tasks with others

3. Review

Check out your tasks, set priorities, and make decisions

4. Bee productive!

(Get used to the bee puns.)

[Take the full tour! >>](#)

Already have an account? Sign in below.

Email address

Password

Remember me? Your browser can remember your Hiveminder login for you

[Sign in](#)

Forgot your password? [Get it reset.](#)

Don't have an account? [Sign up!](#)

Need a new activation link? [Go have one resent.](#)

Need more help? [Send us feedback.](#)

Using hosted apps is
going to hurt you.

Data access is
important.

APIs are great.

...but easy access to a service just makes it easier to get locked in.

What about Google
Gears, Adobe Air, etc?

Great. now you can use
your word processor
while you're offline!

The First Fifty Years

A wise man once said that "Friends come and go, but enemies accumulate." The same can be said of the relationships that develop between a company and its customers.

The year 1989 marks the 50th anniversary of the founding of HALVA International. While many other import/export businesses have started in glory and ended in defeat, the HALVA International Corporation continues to thrive.

While there are many theories surrounding the success of HALVA International, the truth lies in the careful cultivation of good customer relations and continued efforts to provide quality merchandise at affordable prices.

In this report, the status of HALVA International in the past, present, and future is reviewed, with an emphasis on the characteristics vital to the continued survival of the company.

The European Connection

The year was 1939, and the rumours of war had become the

Real offline apps
shouldn't need servers.

Real offline apps
should sync like you do.

I've been hacking on an
open source database
called "Prophet".

It has an API like
Amazon SimpleDB or
Google App Engine's...

It's designed for
“team-scale” apps.

It's built for P2P
replication and
disconnected use.

App #1 is the canonical
“offline bug tracker”.

App #2 will probably
be a BBS you can sync
over sneakernet.

bestpractical.com/prophet

Make sure nobody can
take away your right to
use your software.

Thanks!