

We recycle four types of end of life home appliances appropriately!

Don't use **unauthorized** collection agents when disposing of end-of-life home appliances!

Legally commissioned and approved agents will dispose of home appliances properly.

When throwing away home appliances as waste, don't ever give items to collection agents that have not been approved under the waste management act. Make sure you give them to an electronics retailer or talk to the local government.

Don't use these kind of unauthorized agents:

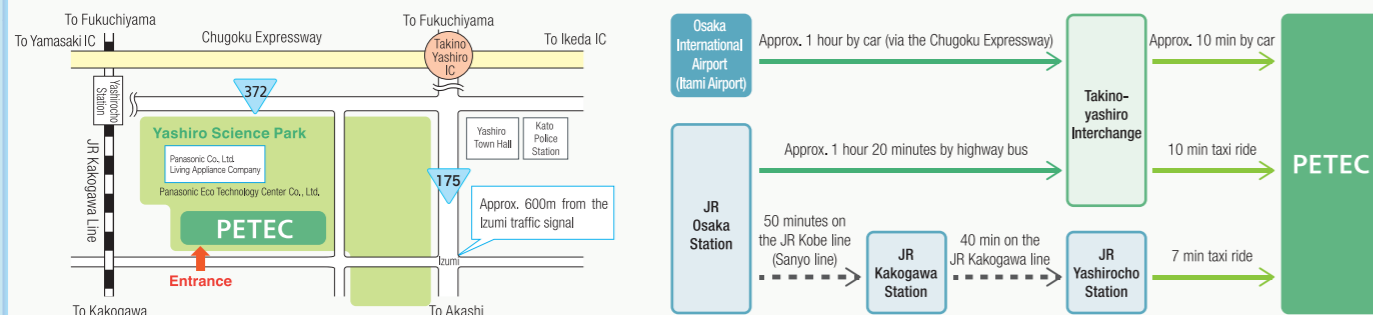


Using these kind of dealers could lead to the following problems!



Help us recycle  
TVs, refrigerators and freezers, washing machines and dryers, air conditioners  
in accordance with the "Home Appliance Recycling Law!"

### Access to PETEC



### Plant Tours (Please book in advance)

<b>Tour days</b>	Tuesday-Friday* (two tours per day) * Excluding public holidays	<b>Number of Visitors</b>	3 to 60* * We ask that you arrange for an interpreter to accompany you, should you require one during your tour of the facility. (It is preferable to arrange one interpreter for every 20 visitors.)
<b>Tour hours</b>	(1) 10:00 a.m. - 11:30 a.m. (2) 1:30 p.m. - 3:00 p.m.	<b>Applications</b>	School visits discussed as required Please apply through our website

### Notification for PETEC Virtual Factory Tour

You can enjoy a virtual factory tour by scanning this QR code with your smartphone.



### Panasonic Eco Technology Center Co., Ltd.

50 Saho, Kato City, Hyogo Prefecture 673-1447  
TEL: 0795-42-8570 FAX: 0795-42-8580

#### Website

English\* <https://panasonic.net/eco/petec/>  
Japanese <https://panasonic.co.jp/eco/petec/>

\* Tour reservations can be made via the Japanese website only.

2024.03.2000

# Panasonic

The Hands-on Recycling-Oriented Plant  
Where You can Watch, Listen, Touch and Learn

# PETEC

Panasonic Eco Technology Center



Panasonic Eco Technology Center Co., Ltd. (PETEC)

# Product to product - Introducing Panasonic Eco Technology Center's "Treasure Hunting"



## Passing precious resources on to the future through recycling-oriented manufacturing

"Maybe I should buy some new appliances..."  
"I'd really like to get rid of these old appliances..."

In time, all home appliances will have served their purpose. When that time comes, what happens to appliances that are no longer needed?

Used appliances are still full of useful resources. So, in keeping with the "Mottainai Spirit", we recycle them to keep their resources from going to waste. By recycling these precious resources "from products to products", we are working to reduce waste.

**Facility Overview**  
Capital: JPY 400 million  
Opening of business: April 1, 2001  
Site area: 38,570m<sup>2</sup>  
Number of end-of-life home appliances recycled: Approximately 900,000 per year  
Types of products accepted for recycling: flat screen TVs, washing machines and dryers, air conditioners, refrigerators and freezers (4 types, 6 appliances)



## Walking with the local community

Those of us at PETEC walk with our local community through regular discussion with the members of the local community (Environmental Conservation Council), reflecting the opinions of locals that come out at these meetings in our operations, collaboration with those with disabilities, and providing opportunities for the children who will be responsible for the next generation to tour our factories.



Environmental Conservation Council

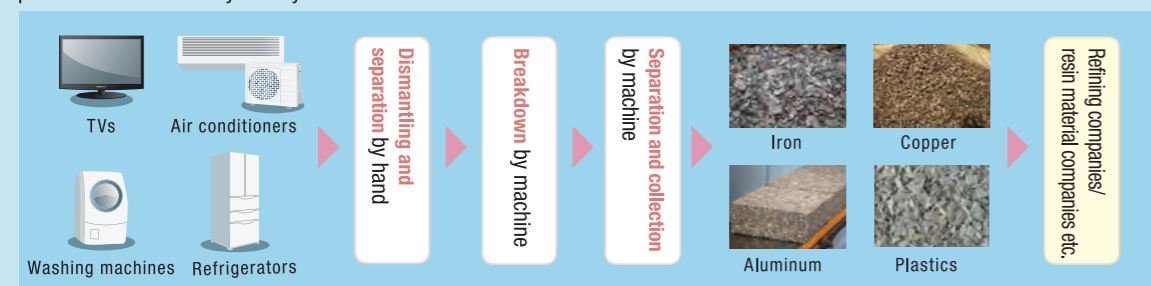


Opening our facilities to people of all ages and nationalities

## Using new recycling technology to collect more resources

### PETEC's Home Appliance Recycling

Products with different manufacturers, models and composition are first dismantled by human hand. Hazardous substances such as CFC gases and mercury are also disposed of appropriately. Then, following breakdown by machine and automatic separation, the products return to society as recycled resources.



### Development of recycling technologies

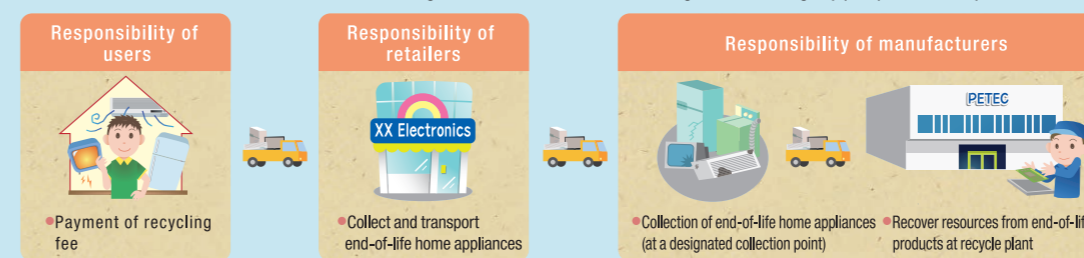


Development of technology that simultaneously separates three types of plastic  
We developed a system that simultaneously separates and collects PP, PS, and ABS (types of plastic) at over 99% purity using infrared light. The development of this technology has contributed to an increase in the speed of recycled plastic (resin) reuse.

[Examples of previous technology developed]  
Neodymium magnet collection device, CRT laser splitting device

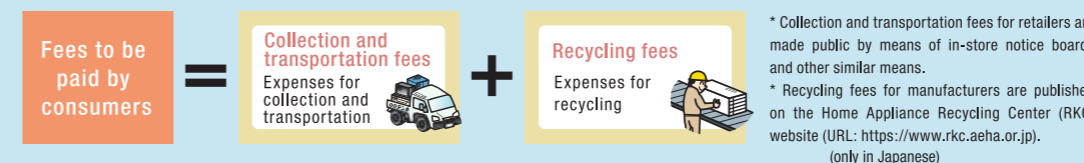
## Japanese Home Appliance Recycling Scheme

The Home Appliance Recycling Law (the Recycling of Specified Kinds of Home Appliances Act) is the legal act that enforced a system in which consumers (disposers), retailers, and home appliance manufacturers all fulfil a different role in the recycling and effective use of end-of-life home appliances as resources. It also contributes to conservation of the global environment through enforcing appropriate disposal of hazardous substances.



### Why does it cost money to recycle household appliances?

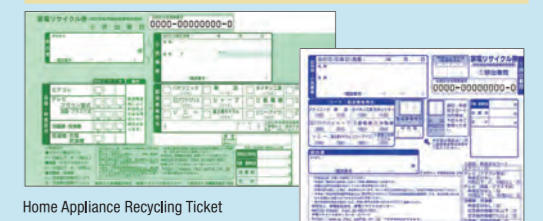
The fee paid when handing over end-of-life home appliances is used as the expense required for recycling.



### How used home appliances are managed

In Japan, the following recycling tickets are issued when paying the recycling fee. Items for recycling are managed by the reference number on the slip and are recycled properly. Consumers themselves can also check the status of a designated collection.

Home Appliance Recycling Ticket Center (RKC)  
[https://rkc-bu-in3.rkc.aeha.or.jp/plsql/rkc\\_web/p\\_kt330080](https://rkc-bu-in3.rkc.aeha.or.jp/plsql/rkc_web/p_kt330080)  
(only in Japanese)



Home Appliance Recycling Ticket (for fees paid at retailers)

Home Appliance Recycling Ticket (for fees paid through postal transfer)