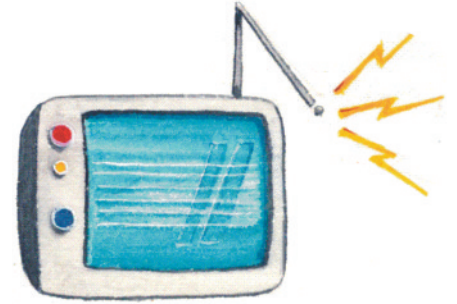


5 It's Kate's birthday today. Look at her hobbies and think of presents for her:



☀ She likes listening to music.

Let's give her



☀ She likes dancing.

Let's give her

☀ She likes watching TV.

Let's give her

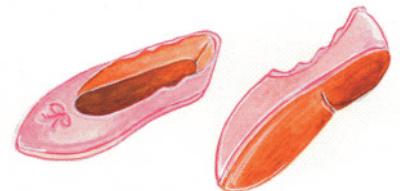


☀ She likes playing computer games.

Let's give her

☀ She likes reading.

Let's give her



Αν θέλεις να δουλέψεις σε πιο εύκολους ρυθμούς πήγαινε στο παράρτημα I και κάνε τις ασκήσεις που μπορείς

Unit 3:

This is where I live

Lesson 1:

My country



1 Look at the flags and write the names of the countries:



1.



2.



3.



4.



5.



6.

2 Write the nationalities:



☀ Greece -

☀ Italy -

☀ the United Kingdom -
.....

☀ Albania -

☀ China -

☀ Egypt -



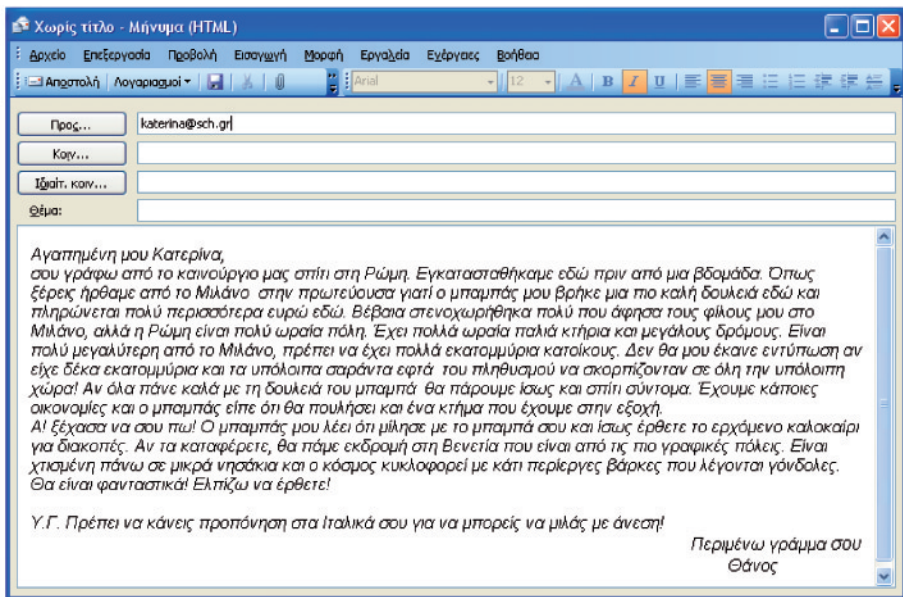
3 Look at the chart with the information about these children and follow the example:

NAME	COUNTRY	NATIONALITY	CITY
Katerina	Greece	Greek	Mytilene
Alessandra	Italy	Italian	Naples
Amanda	the United Kingdom	British	Liverpool
Edvin	Albania	Albanian	Tirana
Hou	China	Chinese	Beijing
Omar	Egypt	Egyptian	Cairo

e.g. Katerina is from Greece. She is Greek. She lives in Mytilene.

- ✿ Alessandra.....
- ✿ Amanda.....
- ✿ Edvin.....
- ✿ Hou.....
- ✿ Omar.....

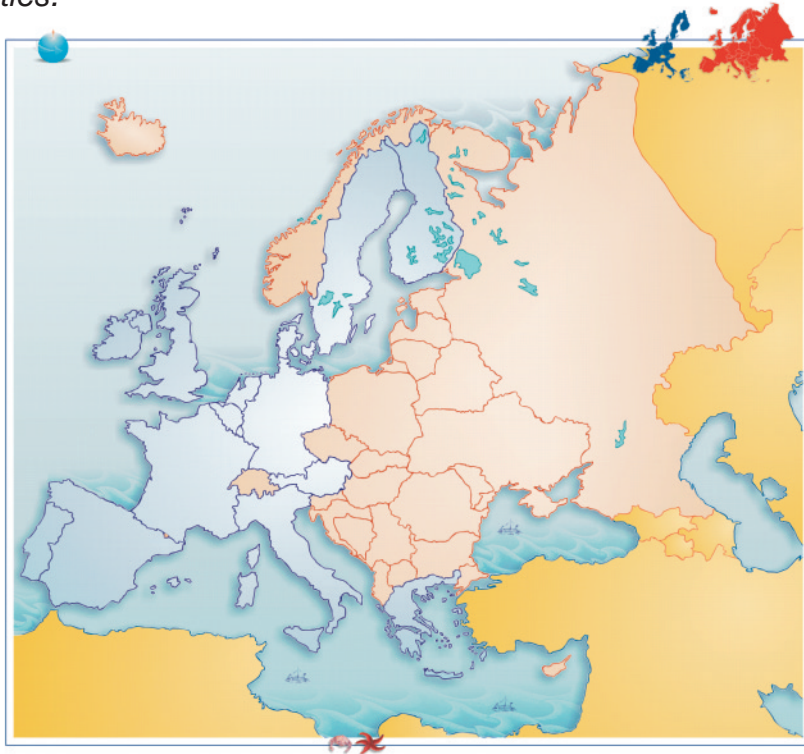
4 This is an e-mail to Katerina from her cousin, Thanos. Thanos lives in Italy. Read the e-mail and fill in the missing information.



- Country:
- Capital City:
- Language:
- Population:
- Money:

5

Read the texts. Where are the children from? Write the names of the countries and the nationalities:



....., my country, is in the south-eastern part of Europe. It is near Greece. It is a small country with a lot of beautiful beaches on the Adriatic Sea. Its capital city is Tirana and the population is about 3,500,000 people. Our flag is red and black.

Petraq

....., my country, is in the south-eastern part of Europe. It is a very big country. Our population is over 57,600,000 people and the capital city is Rome. Our flag is green, red and white. A lot of tourists come to my country to see the Colosseum and go to Venice, a very beautiful city on small islands.

Claudia

Petraq is.....

Claudia is.....

Lesson 2:

My city

1 Match the countries and the capital cities. Draw lines:



- the United Kingdom
- Albania
- Italy
- Greece
- China
- Egypt



- Athens
- London
- Beijing
- Cairo
- Tirana
- Rome



2 Look at this information and talk about different cities. Follow the example:

- ✓ = a lot of
- ✗ = not many

(a lot of cars: )
 (not many cars: )



	Athens	London	Cairo	Rome
trees	✗	✓	✗	✓
blocks of flats	✓	✗	✓	✓
houses with gardens	✗	✓	✗	✗
cars	✓	✓	✓	✓
shops	✓	✓	✓	✓

e.g. In Athens, there are a lot of blocks of flats, cars and shops, but there aren't many trees and houses with gardens.

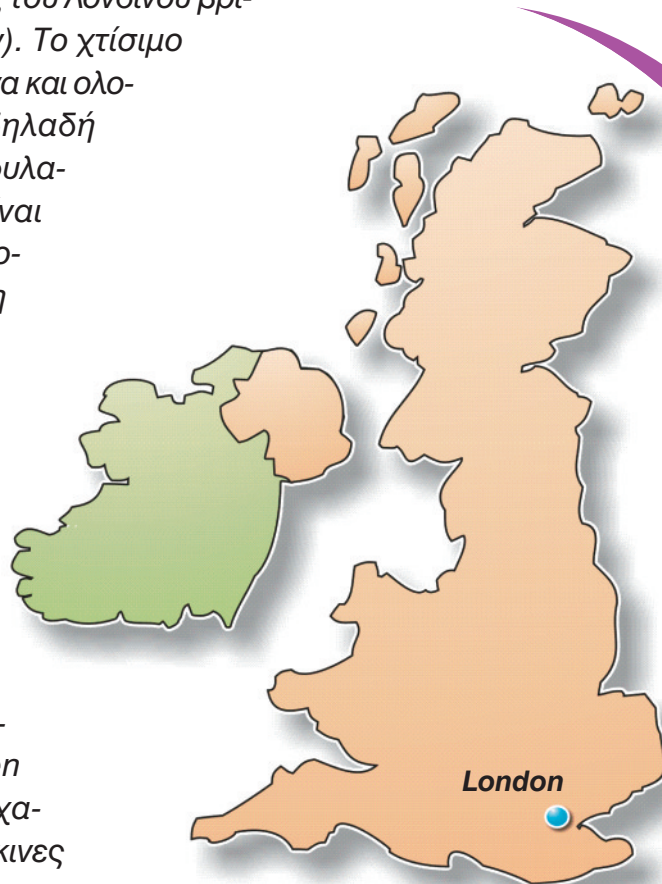
In London,

In Cairo,

In Rome,

3 This is information on some sights in London in a travel guide. Read it and fill in the information:

1. Tower of London: Ο Πύργος του Λονδίνου βρίσκεται στην περιοχή Σίτυ (City). Το χτίσιμο του Πύργου άρχισε τον 11^ο αιώνα και ολοκληρώθηκε το 13ο αι., είναι δηλαδή 900 χρονών. Παλιότερα ήταν φυλακή και παλάτι αλλά σήμερα είναι μουσείο. Για να ξεναγηθείτε υπολογίστε περίπου δυο ώρες. Μη χάσετε την περίφημη συλλογή με τα κοσμήματα του Στέμματος (Crown Jewels), το Λευκό Πύργο (White Tower), που είναι το πιο παλιό τμήμα, το Ματωμένο Πύργο (Bloody Tower) και την Πύλη του Προδότη (Traitor's Gate). Στον Πύργο του Λονδίνου θα σας ξεναγήσουν οι γνωστοί Γιόμαν Γουόρντερς ή Μπιφιτέρς (Yeomen Warders or Beefeaters) με τις χαρακτηριστικές μαύρες και κόκκινες στολές τους.



2. Tower Bridge: Πρόκειται για την παλιότερη σήμερα γέφυρα πάνω από τον ποταμό Τάμεση (Thames). Βρίσκεται στην περιοχή του Σίτι (City), κοντά στη Γέφυρα του Λονδίνου (London Bridge) και τον Πύργο του Λονδίνου (Tower of London). Εγκαινιάστηκε επίσημα στις 30 Ιουνίου 1894 και από τότε είναι ένα από τα κυριότερα αξιοθέατα του Λονδίνου. Οι πύργοι της είναι χτισμένοι σε Γοτθικό στυλ και το μεσαίο κομμάτι της γέφυρας μπορεί να υψωθεί για να περάσουν πλοία. Για τις ώρες που σηκώνεται η γέφυρα ρωτήστε στο Bridge Lift Information.

3. British Museum: Το Βρετανικό Μουσείο χτίστηκε το 1753 και περιλαμβάνει μια πλούσια συλλογή από αρχαιότητες και νομίσματα μοιρασμένα σε 94 αίθουσες. Βρίσκεται στην περιοχή του Σίτι (City) κοντά στο Πανεπιστήμιο του Λονδίνου (University of London). Ανάμεσα στα πιο σημαντικά εκθέματά του είναι τα Μάρμαρα του Παρθενώνα (Parthenon Marbles) και η Ροζέτα (Rosetta Stone) που έδωσε τη δυνατότητα στους αρχαιολόγους να αποκρυπτογραφήσουν τα Αιγυπτιακά ιερογλυφικά.

Sight 1

Name:

Area:

It is near:

It is: years old.

There, you can see,



Sight 2

Name:

Area:

It is near:

It is years old.



Sight 3

Name:

Area:

It is near:

It is years old.

There, you can see



4 Read the text that follows and say if the following statements are **TRUE** or **FALSE**. Circle the correct letter:



This is where I live

I live in a beautiful town, Mytilene. It is on the island of Lesbos, in the north eastern part of Greece and it is near the sea. It is a clean town and there are a lot of trees in the streets. There are some blocks of flats, but only in the centre of the town. There are a lot of houses and some of them have beautiful gardens. I live in a small house with a garden. There is a church near my house and a park in front of the church. At weekends, my friends and I go to the park and play football, but sometimes I go to the supermarket with my mum on Saturday mornings. There isn't a theatre in our town, but there is a cinema and sometimes we go there with my friends on Sunday afternoons.

Panagiotis

- | | | |
|---|---|---|
| 1. Panagiotis lives in a city | T | F |
| 2. Mytilene is near the sea | T | F |
| 3. There are a lot of blocks of flats in Mytilene | T | F |
| 4. Panagiotis lives in a flat | T | F |
| 5. There is a church near his house | T | F |
| 6. Panagiotis and his friends play basketball at the park | T | F |
| 7. He sometimes goes to the shopping centre with his mum on Saturday mornings | T | F |
| 8. There is a cinema in his town | T | F |

5 Write about your area. Use these words. Follow the example:

**sports centre, cinema, park, theatre, museum, café,
shopping centre, supermarket, school, church**

e.g. There is a sports centre. It's next to my block of flats.
There is a school. It's between the church and the park.

This is my area

.....

.....

.....

.....

.....

.....

.....

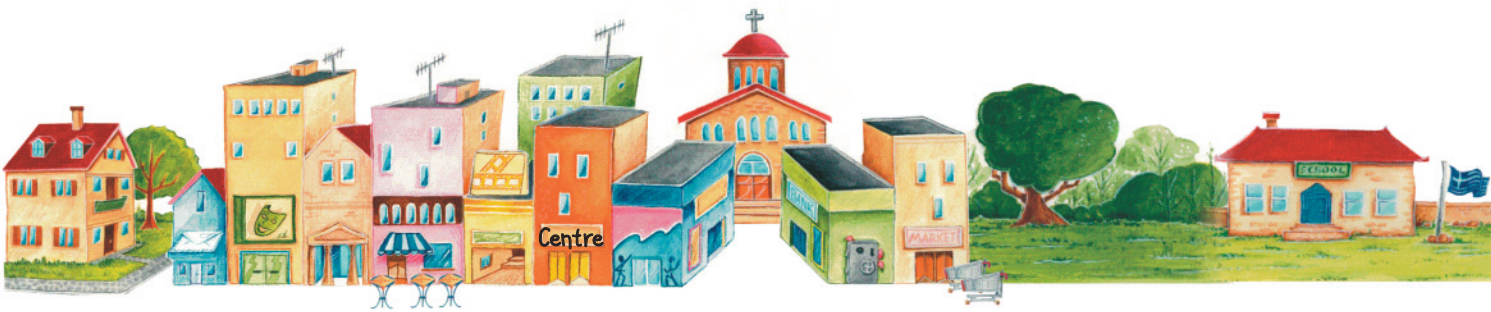
.....

.....

.....

.....

.....



Αν θέλεις να δουλέψεις σε πιο εύκολους ρυθμούς πήγαινε στο παράρτημα I και κάνε τις ασκήσεις που μπορείς

Unit 4:

Time

Lesson 1:

Happy Birthday!



1 When are these holidays? Write the months:

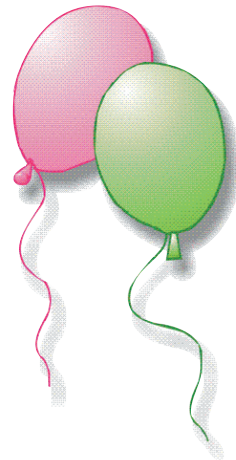
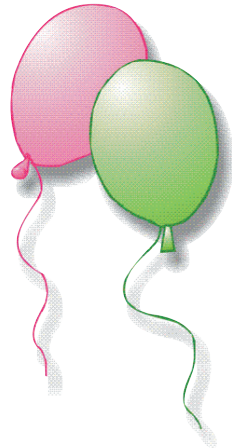


- ☼ New Year's Day: In
- ☼ Christmas: In
- ☼ Mother's Day: In
- ☼ St Valentine's Day: In
- ☼ 1821 National Holiday: In
- ☼ 1940 National Holiday: In
- ☼ **Your** birthday: In
- ☼ **Your** name day: In



2 Complete the puzzle. Which month isn't in the puzzle? Which is the secret phrase?

			1	S										
2	J													
			3	M										
4	N													
5	D													
	6	M												
	7	A												
8	F													
9	J													
			10	A										
11	O													

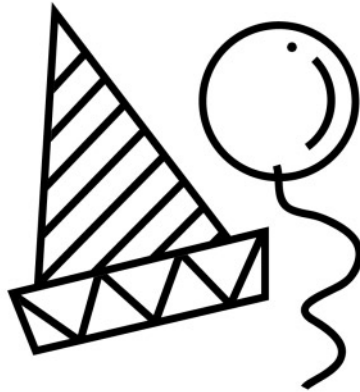


1. We go to school in this month
2. New Year's Day is in this month
3. A month with three letters
4. The month after October
5. Christmas is in this month
6. The month after February
7. This month starts with **A** and is a summer month
8. It has 28 or 29 days
9. We finish school in this month
10. The month after March
11. The month after September

✓ isn't in the puzzle.

✓ The secret phrase is:!

3 When is your birthday? Write an invitation card for your birthday party and colour the pictures:



Come to my party! It's on

.....

.....

.....

.....

.....

.....

.....

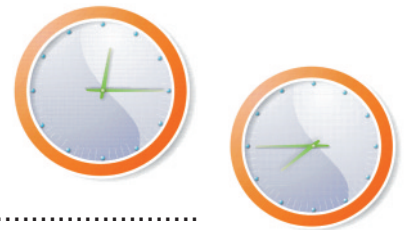
4 Read and match. Write the letters in the blanks:

1 a. It's twelve o'clock
 b. It's quarter past eleven
 c. It's half past five
 d. It's quarter to two
 e. It's quarter to eleven
 f. It's quarter past six
 g. It's half past nine
 h. It's three o'clock

2
3
4
5
6
7
8

1....., 2....., 3....., 4....., 5....., 6....., 7....., 8.....

5 Answer these questions about yourself:



- ☀ What time do you get up in the morning?
- ☀ What time do you go to school?
- ☀ What time do you come home from school?
- ☀ What time do you start your homework?
- ☀ What time do you go to bed?

6 Sophia's mother is telling her what to do this week. Look at Sophia's diary and write the time in the blanks in her mother's words (use phrases):

SEPTEMBER	
Wednesday 17	5.30 English class 7.15 French class
Thursday 18	6.15 dentist 7.00 French class
Friday 19	6.45 cinema with Kate
Saturday 20	6.30 Angela's party

So, Sophia, don't forget!
 You've got an English class at (1)..... on Wednesday and then a French class at (2)..... On Thursday, you've got a dentist's appointment at (3)..... and at (4) you've got a French class. On Friday the 19th, cinema with Kate at (5)..... and on Saturday, it's Angela's party at (6).....



7 Match questions and answers:

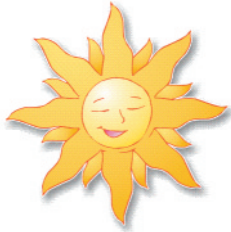
- | | |
|------------------------------------|-----------------------------------|
| 1. When's your birthday? | A. No, but it's warm |
| 2. Is it hot in Greece in May? | B. It's raining |
| 3. Which is your favourite season? | C. It's on June 21 st |
| 4. Is it cold today? | D. No, it isn't |
| 5. What's the weather like? | E. Summer, but I also like spring |

Lesson 2:

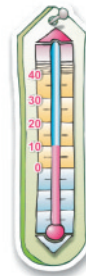
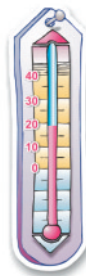
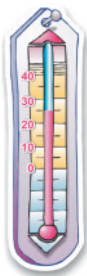
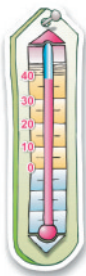


What's the weather like?

1 What's the weather like?



1. 2. 3. 4. 5.



6. 7. 8. 9.

2 Find the season:

☀ It's cold and it's snowing. Christmas is near.

It's

☀ It's very hot and sunny and people are going to the sea to swim.

It's

☀ It's warm and there are flowers and green trees.

It's

☀ It's warm in the morning and chilly at night. The trees are yellow.

It's

