

# PAD-US—National Inventory of Protected Areas

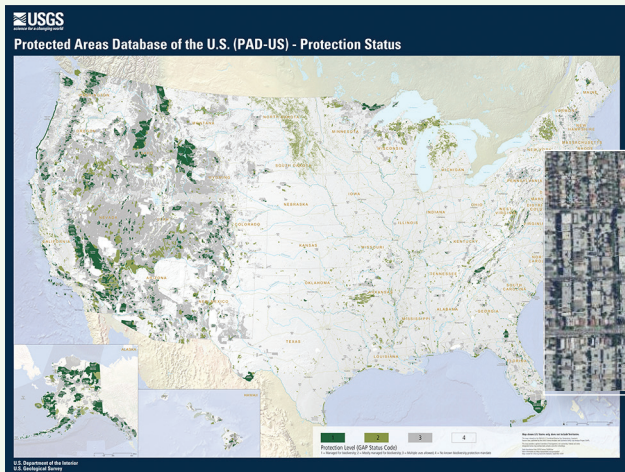


The Protected Areas Database of the United States (PAD-US) is the official inventory of public parks and other protected open space. Consisting of 436,000 land and marine units, the spatial data in PAD-US include areas managed by greater than 30,000 agencies and nonprofit organizations.

**View and download PAD-US data here:**

<https://usgs.gov/gapanalysis/pad-us>

PAD-US is published by the U.S. Geological Survey Gap Analysis Project (GAP). GAP produces data and tools that help meet critical national challenges such as biodiversity conservation, recreation, public health, climate change adaptation, and infrastructure investment. Learn more about GAP and other GAP data (including species and land cover) at <https://usgs.gov/gapanalysis>.



## Key Features

- Includes fee-owned public parks and other lands, designated areas, conservation easements from the National Conservation Easement Database, and marine protected areas.
- Offers the best-available U.S. aggregation of Federal land ownership provided directly by land management agencies and coordinated through the Federal Geographic Data Committee Federal Lands Working Group.
- Compiles State-by-State inventories through a network of State data stewards (learn more at <http://www.protectedlands.net/data-stewards/>).
- Includes land coding that describes degree of access for public recreation, plus conservation rankings (GAP Status Codes 1–4), and International Union for the Conservation of Nature (IUCN) categories.
- Makes spatial data available for public download and accessible as web services.

Learn more at <http://www.protectedlands.net>

**View PAD-US data here:** <https://maps.usgs.gov/padus/>

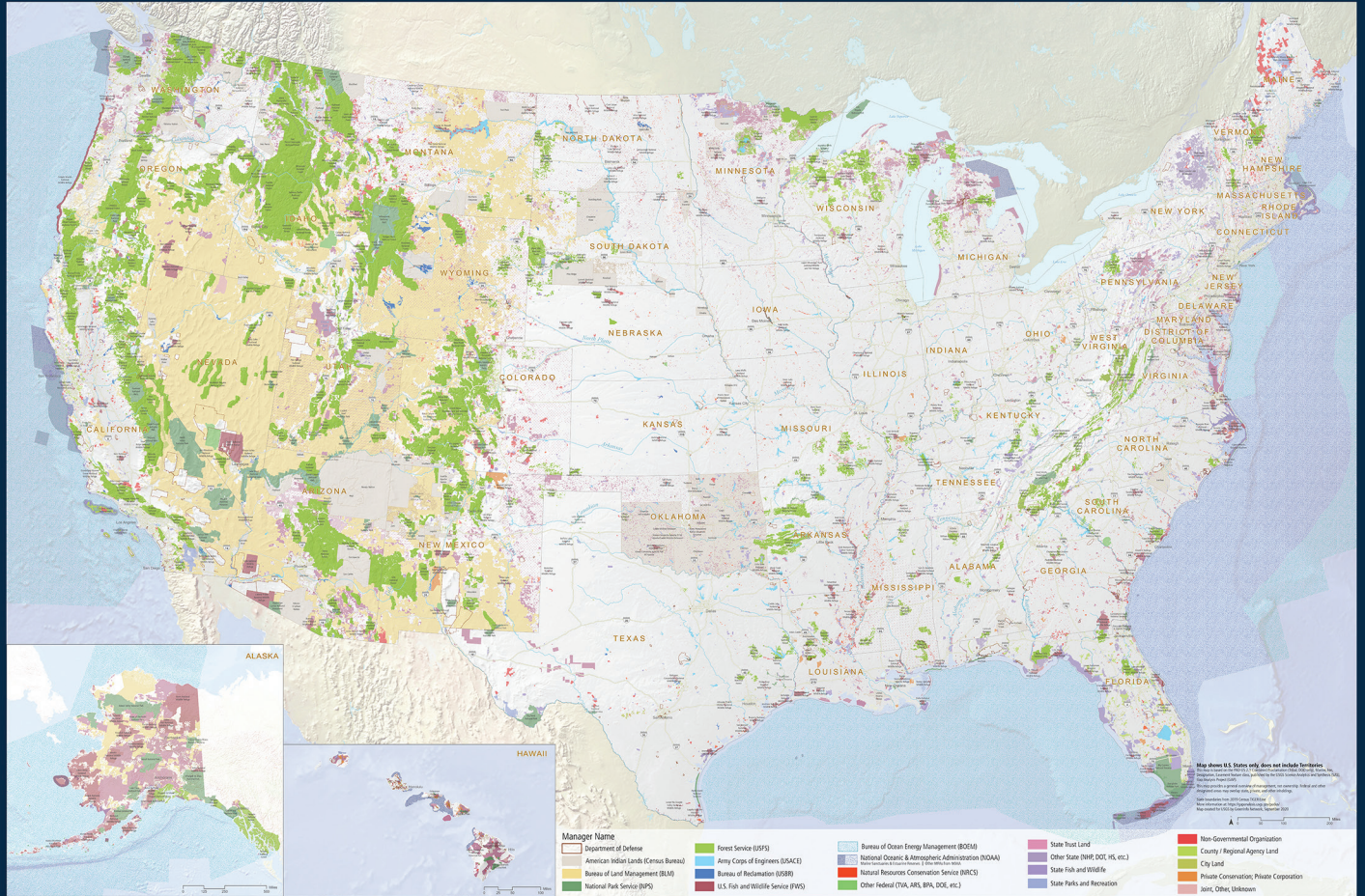
## PAD-US data are crucial to a wide range of activities:

- Managing public lands to better protect biodiversity
- Reporting to the United Nations Environment Programme World Conservation Monitoring Centre (UNEP–WCMC) World Database on Protected Areas
- Providing improved recreation access and supporting public health campaigns
- Ensuring effective siting for renewable energy facilities and other infrastructure
- Developing action strategies to mitigate climate change impacts

<https://usgs.gov/gapanalysis>

**For more information on PAD-US, email [pad-us@usgs.gov](mailto:pad-us@usgs.gov)**

## Protected Areas Database of the U.S. (PAD-US) - All Managers



U.S. Department of the Interior  
U.S. Geological Survey

“PAD-US can be very powerfully applied in both the public and private sectors, and it also answers a whole lot of questions about how the public can enjoy and access public lands.”  
—Bob Ratcliffe (*National Park Service, Chief Conservation and Outdoor Recreation*)

“The PAD-US is like a screwdriver—it doesn’t matter what project you work on, you know you’re going to need the PAD-US as a tool.”  
—Travis Belote (*The Wilderness Society*)

“PAD-US is the most complex, yet intelligently designed, database of its kind. Nothing else exists that aggregates data from authoritative sources as completely as PAD-US.”  
—Roger Johnson (*National Park Service, Chief Cartographer*)

