

ISO Geospatial Metadata
the
411
on
19115 (-1)

Lynda Wayne, *GISP, ASLA*
GeoMaxim – Federal Geographic Data Committee (FGDC)

October 21, 2015

Tweet about this presentation [#gispro2015](#)

1

ISO Geospatial Metadata

411

Why ISO?

New Content

Transitioning from CSDGM to ISO

Resources

October 21, 2015

Tweet about this presentation [#gispro2015](#)

2

Why ISO?

Application to range of geo info resource types



Application Tip

Document relationships among resource types such as datasets associated with a specific service, e.g. web-mapping application

Why ISO?

Flexibility & customization

- few mandatory elements
- more robust elements
- guidance on building profiles/extensions

Application Tip

Skip the irrelevant, go deep where you want, e.g. data processing, make the metadata your own

Why ISO?

Modular and efficient

- suite of standards – use what you need
- reuse and recombine records
- save snippets of commonly used content
- use of identifiers to reference related resources

Application Tip

Build library of contact, source data, and process step snippets and reference (dynamic 'href' link) or incorporate ('resolve' the link)

Why ISO?

Standardized content & format

- fixed domains - picklists
- reference published code lists
- UML & XML

Application Tip

Use Spatial Reference System Identifiers (SRID) such as EPSG 4269 to reference, vs document, coordinate and projection parameters

Why ISO?

Standardized content & format

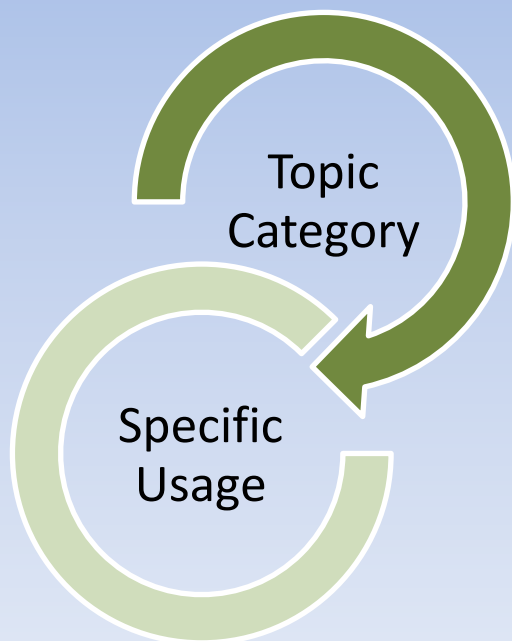


Application Tip

International is becoming national. NSDI applications such as GeoPlatform – Data.gov utilize ISO metadata format, ISO Topic Categories, & more. The FGDC plans to endorse 19115-1 and associated standards in 2016.

New Content

All you favorite CSDGM elements are there, except 'Baud Rate', with some additions:



Mandatory – a list of 22 high level subject headings such as: *farming, biota, boundaries, economy, elevation, environment, health, imagery, inlandWaters, location, oceans, planningCadastre, society, transportation*

Optional – provides context for the data; a description of how the data has been or is currently being used

New Content



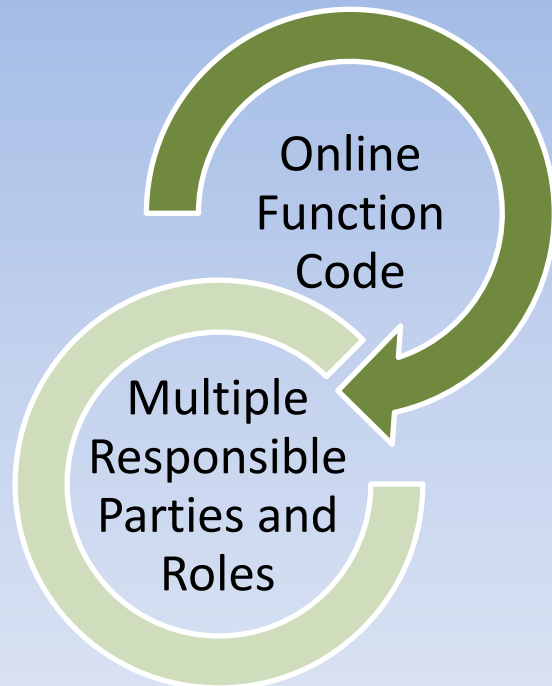
Vertical
Extent

Optional – describe the columnar extent of a data set, especially relevant to atmospheric, oceanic, and geologic data

Multiple
Range of
Dates

Optional – describe multiple data spans within the same study, e.g. land loss between 1925-1930 compared to 1955-60 and 1985-90 loss areas

New Content



Optional – describe the action that happens if the URL is selected, e.g. download, information, email, order, search, browsing, complete Metadata...

Optional – identify multiple individuals and organizations associated with a resource and describe their role, e.g. custodian, originator, distributor, contributor, funder, stakeholder, sponsor...

Transitioning: CSDGM to ISO

Now

Edit CSDGM Records

- Add ISO Topic Categories as Theme Keywords
- See FGDC *Metadata Quick Guide* for guidance

As Needed

Transform CSDGM Records to ISO

- As data are used, shared, published
- Use RS/GIS software *display as*, *export as*, or *transform* feature
- Review record carefully, note edits for future transform
- Use NOAA XSLTs in XML editor
<http://www.ncddc.noaa.gov/metadata-standards/metadata-xml/>

Transitioning: CSDGM to ISO

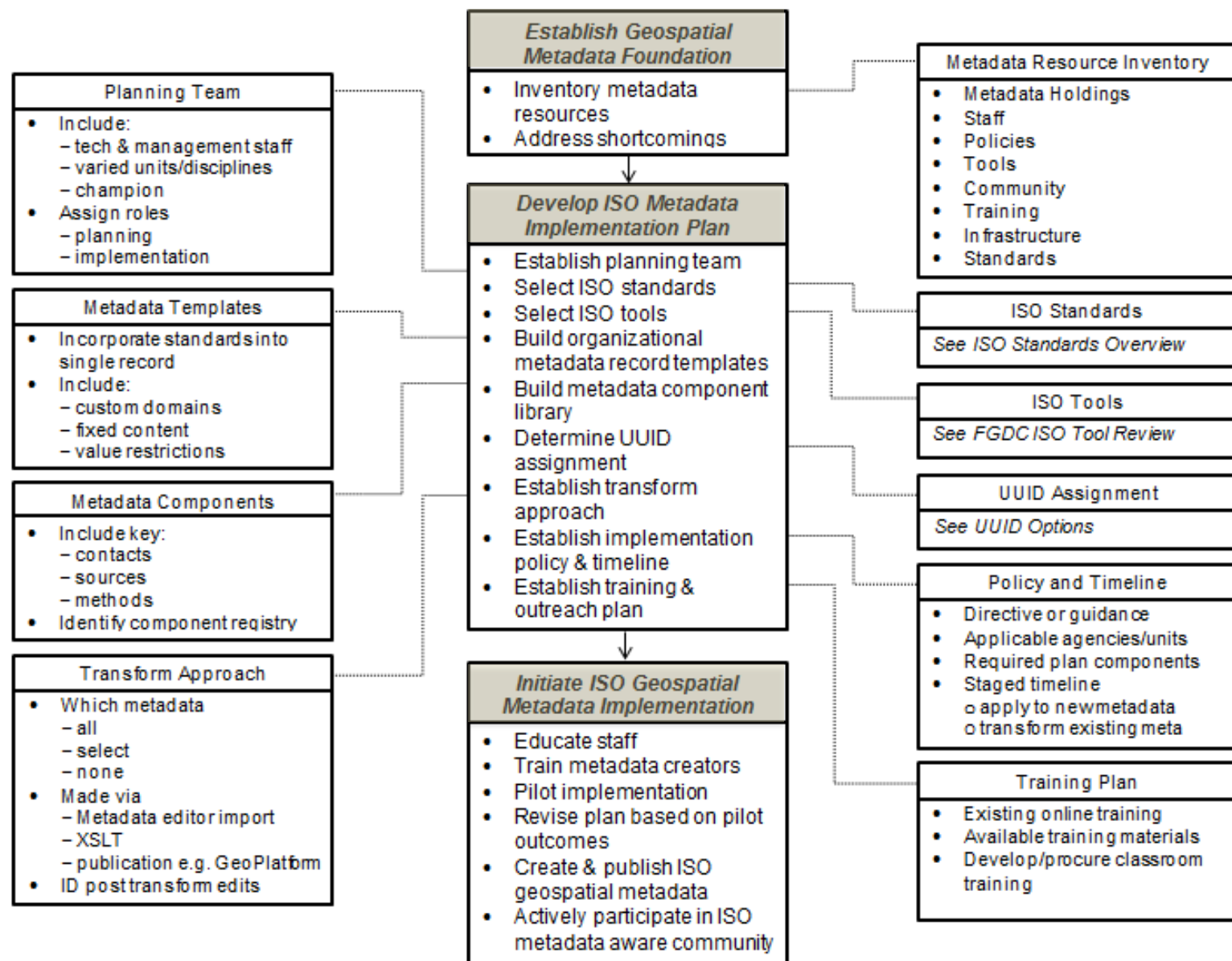
When
Able

Make Organizational
Change to ISO

- Apply *and adapt* FGDC CSDGM to ISO Model Work Flow
- See FGDC ISO Geospatial Metadata Implementation Forum website

ISO Implementation Model Workflow PPT/PDF (July 2014)

CSDGM to ISO Model Workflow



ISO Geospatial Metadata Resources



FGDC ISO Implementation Forum

- Monthly Stakeholder presentations & discussions about issues, opportunities, challenges, solutions, applications, etc.
- Alternates with quarterly FGDC MWG meetings
- <http://www.fgdc.gov/metadata/events/iso-geospatial-metadata-implementation-forum>



FGDC ISO Implementation Webinar Materials

- Online training provided Federal Metadata Coordinators
- Includes introductory information and agency case studies
- http://www.fgdc.gov/metadata/events/ISO_Implementation_Webinar

ISO Geospatial Metadata Editors Registry

<https://www.fgdc.gov/iso-metadata-editors-registry/editors>

ISO Geospatial Metadata Editors Registry Home Submit New - Existing Editors - Existing User Reviews - About Profile Logout

ISO Geospatial Metadata Editors

Feature	GeoNetwork Opensource	CatMEEdit V.5.0	Esri Geoportal Server
	View Full Record	View Full Record	View Full Record
Geospatial Metadata Content Standards Supported			
ISO 19115:2003 - Metadata			
ISO 19115-2 - Gridded Imagery Extension			
ISO 19110 - Feature Catalog			
ISO 19119 - Services			
ISO 19115-1 - Metadata Fundamentals			
Other Related Metadata Standards			
User Interface			
GUI			
Edit XML Directly			
Other / Comments			

User submitted Reviews

Disclaimer: All content was submitted by, and reviewed by, application developers and user reviewers. As such, FGDC is not responsible for inaccuracies or misrepresentations. Furthermore, presentation of this information does not constitute nor imply an endorsement by the FGDC of these applications or of the views represented in the User Reviews.

[Review by Jennifer Walter](#)

updated on 03 Jul, 2015 12:26 PM ET

<p>Application Access and/or Installation Describe success or challenges experienced when accessing or installing the application</p> <p>Standards Supported For the standards supported, describe success or challenges experienced with regard to how well the standards were supported</p> <p>Operating Environment Describe success or challenges you experienced with the operating environment including: operating platform (desktop, enterprise, online), operating system(s), proprietary nature, data storage format, programming languages, 3rd party software, or other</p> <p>User Interface Describe success or challenges experienced with the user interface</p> <p>Support Features Describe success or challenges you experienced with user support features including: autopopulation of metadata</p>	<p>Version 2.10.3 must be installed to a directory with write access, otherwise GeoNetwork will not work. There is no mention of this in the user's guide / developer's guide 2.10.3. I only discovered the problem/solution from an internet search of an error message I received. Potential conflict with other software programs using the same port as GeoNetwork (Oxygen, XMLSpy). Cannot be simultaneously installed together.</p> <p>Supports 19115-2/19139-2 when schemas added to GeoNetwork v2.10.3 (not pre-installed). Schema add-in instructions in the GeoNetwork 2.10.3 user's guide/developer's guide didn't work. User must have schema files; GeoNetwork-compatible files not available from GeoNetwork (that I could find). Forced schema add-in by adding 19115-2/19139-2 schemas to the GeoNetwork schema folder. This made GeoNetwork "buggy" (received "24 stylesheet errors" error message) & could not export to ISO 19139-2 XML.</p> <p>Success: Downloadable .exe file made for easy desktop install of version 2.10.3.</p> <p>Version 2.10.3: user friendly editing HTML view with drop down menus, identification of required elements in red, links to definitions of metadata elements, easy addition/deletion of packages, full view (entire record) or section view. XML view is not as user friendly. The XML text wraps, instead of retaining the XML hierarchical/indentation structure.</p> <p>Version 2.10.3 drop-down pick-lists, links to definitions and validation tools were very useful. User manual 2.10.3 and developers manual instructions often did not match the reality of using version 2.10.3 and could not be implemented or weren't enough to achieve the desired result (adding in a schema, exporting to XML).</p>
---	--



NOAA ISO Metadata Resources

- CSDGM to ISO Transforms
<http://www.ncddc.noaa.gov/metadata-standards/>
- Webinar Training and Materials
<http://www.ncddc.noaa.gov/metadata-standards/metadata-training/>
- ISO Metadata Wiki
https://geo-ide.noaa.gov/wiki/index.php?title=Category:ISO_19115

More Information



Lynda Wayne, FGDC Metadata Contract Support
Lynda@GeoMaxim.com



Jennifer Carlino, FGDC Metadata Coordinator
jcarlino@usgs.gov



FGDC Metadata Working Group
(& ISO Implementation Forum)
send name & organization w/request to join to
fgdc@fgdc.gov

Metadata Beyond Data Discovery

Metadata Functions:

- Discovery and Access
- Use and Application
- Data management
 - ◆ Re-use
 - ◆ Timeliness
 - ◆ Shared content
 - ◆ Work flow
 - ◆ Accountability
 - ◆ And more....

ISO facilitates
robust data
documentation
and active data
management –
if you dare...

ISO Geospatial Metadata Forum

<http://www.fgdc.gov/metadata/events/iso-geospatial-metadata-implementation-forum>

ISO Geospatial Metadata Implementation

http://www.fgdc.gov/metadata/events/ISO_Implementation_Webinar

FGDC Metadata Quick Guide (w/ISO Topic Category Instructions)

<https://www.fgdc.gov/metadata/documents/MetadataQuickGuide.pdf>

ISO Geospatial Metadata Editors Registry

<https://www.fgdc.gov/iso-metadata-editors-registry/editors>

Join the FGDC Metadata Working Group (MWG)

send request to join and name, organization, and business sector (Fed, State, NGO, Private, etc) to FGDC@FGDC.gov

ISO 19115-1:2014 Standard (INCITS publication from ANSI) \$133

<http://webstore.ansi.org/RecordDetail.aspx?sku=INCITS%2fISO+19115-1%3a2014%5b2014%5d>

CSDGM to ISO Transforms

<http://www.ncddc.noaa.gov/metadata-standards/>

Webinar Training and Materials

<http://www.ncddc.noaa.gov/metadata-standards/metadata-training/>

ISO Metadata Wiki

https://geo-ide.noaa.gov/wiki/index.php?title=Category:ISO_19115

Contact:

Lynda Wayne, FGDC Metadata Contract Support - Lynda@GeoMaxim.com

Jennifer Carlino, FGDC Metadata Coordinator - jcarlino@usgs.gov

Watch for new and improved FGDC Metadata website

<http://www.fgdc.gov/metadata/>