

CopyToDVD

Complete Manual



Version 4.0, September 15th, 2006

Table of Contents

Introduction	4
A few notes before getting started	4
How is CopyToDVD 4 integrated into Windows®?	5
Two approaches to CopyToDVD	5
Starter	5
Manager	6
What the Starter offers	8
Data	8
Create Data CD/ DVD/Blu-Ray	8
Schedule a backup	8
Copy	8
Copy / Music /Data / Games	8
Main Menu	10
Copy DVD Video	10
Movie & Pictures	12
Write DVD Video	12
Copy DVD Video	12
Create Photo DVD	12
Audio	12
Create Audio CD	12
Play music	12
Manage Music	13
Tools	13
Erase	13
Settings	13
Manager Basics:	13
Menu Guide	13
Projects:	15
Create an audio CD	15
Create a data CD/DVD/Blu-Ray	15
Burn a DVD video	15
Interface setup	16
Create an ISO	18
VSO Inspector: Check quality of burn	19
Starter	20
Menu Behaviour	20
3 rd Party Applications	20
Manager	20
General	20
Display	20
Label	21
File System	21
About	21
Rewritable media	22
Audio	22
Writing devices	22
Media Statistics	22
Sound Events	22
Event Logging	23
Writing engine	23
Multisession	23
Language	24
FAQ	25
What is the importance of the type of media I use?	25
Compatibility	25
Double Layer and CopyToDVD	25
Blu-ray	26
Technical Support	26

Troubleshooting..... 26
Upgrades 27
Command line and SDK available..... 27
Copyright 27

Introduction

CopyToDVD is a very simple, easy to use tool allowing you to burn CDs and DVDs of your music, data, games, pictures, video files, and much more. CopyToDVD uses the latest technology allowing you to burn without unnecessary complications while enjoying the benefits of speed and quality performance of a highly competitive burning application. Enjoy using CopyToDVD and know that VSO Software is there for your comments, questions and feedback.

A few notes before getting started

To get the best results possible we suggest:

- using a relatively new computer and burner
- well maintained hardware
- using quality DVDs and CDs for your burning purposes
- Consider lower speeds while burning if you feel your current projects are difficult to read.
- using the latest firmware (check to verify your using the latest firmware: <http://forum.rpc1.org/portal.php>)
- verify that material is not contaminated by any bugs or virus, etc.
- make sure that software, medias (DVDs and CDs), and burners are compatible before using
- and the use of latest version of software in question

With these bases covered you are ready for some fantastic results!

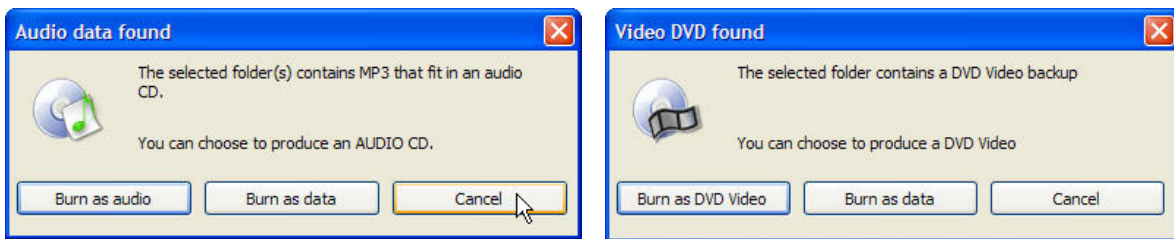
How is CopyToDVD 4 integrated into Windows®?

Aka: burn with a simple right click

Once CopyToDVD is installed, it can be accessed directly from the file browser, you can burn files and/or folders from Windows Explorer very quickly without having to run any application. Simply right click on what you want to burn and select *CopyToDVD* from the context menu. You can select more than one file or folder by holding down the CTRL key as you select. Immediately the burn process will begin as long as you have defined the basic parameters.

What can you back up using shell integration?

You can back up anything using this simple right click method. CopyToDVD will detect what it is you want to burn and ask you how you want to burn it:



Example for audio or DVD video content

For more information, please refer to section "Writing process".

Questions about Shell Integration

Q: What is the difference between "CopyToDVD" and "CopyToDVD Depot" commands?

A: CopyToDVD copies the selected data to a medium immediately. CopyToDVD Depot puts the selected data into a depot, which is loaded once you create a new project with CopyToDVD Manager. Depot is convenient when you have to select a lot of files in different places on your computer.

Two approaches to CopyToDVD

CopyToDVD is composed of two parts: the Starter and the Manager. The Manager is independent of the Starter; it is responsible for edition of your burning projects. The Starter is a nice doorway to the Manager. The Starter gives you links to other applications you can use in with CopyToDVD.

Example: If you want to back up a commercial DVD, CopyToDVD can burn the video file once it is on your hard drive, but doesn't have the ability to rip or compress the original onto your hard drive. To make your task easy, if you already have copy software installed on your computer (such as 1ClickDVDCopy, DVDSHrink, etc) open the CopyToDVD starter click on Movies & Pictures, then Copy DVD Video. CopyToDVD will suggest using one of the other products you have on your computer to do the first task and then it will do the second half by burning the video file onto a DVD.

Through your use of CopyToDVD you might find yourself wanting to go directly to the burning tasks, and in that case opening up CopyToDVD through the Manager is a shortcut for you. If you have multiple tasks you want to get done via CopyToDVD you might prefer opening the Starter so that you have all the options you need in front of you.

Starter



Here is what the starter looks like for CopyToDVD:

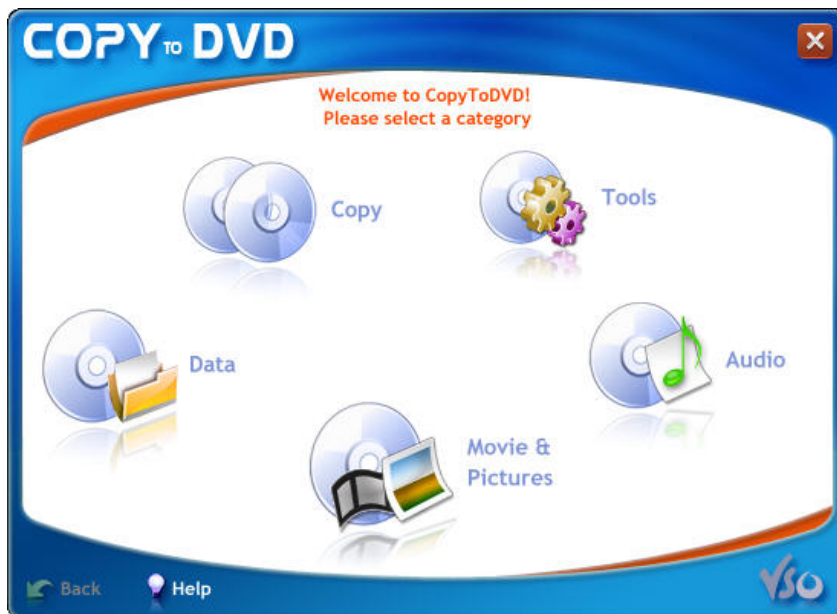


Figure 1

You can access the starter by either the CopyToDVD icon on your desktop:

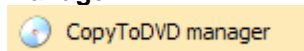


Or in the quick launch bar (if you opted for these option upon installation).



You can also access by *Start* → *All Programs* → *vso* → *CopyToDVD*.

Manager



Here is what the Manager looks like for CopyToDVD:

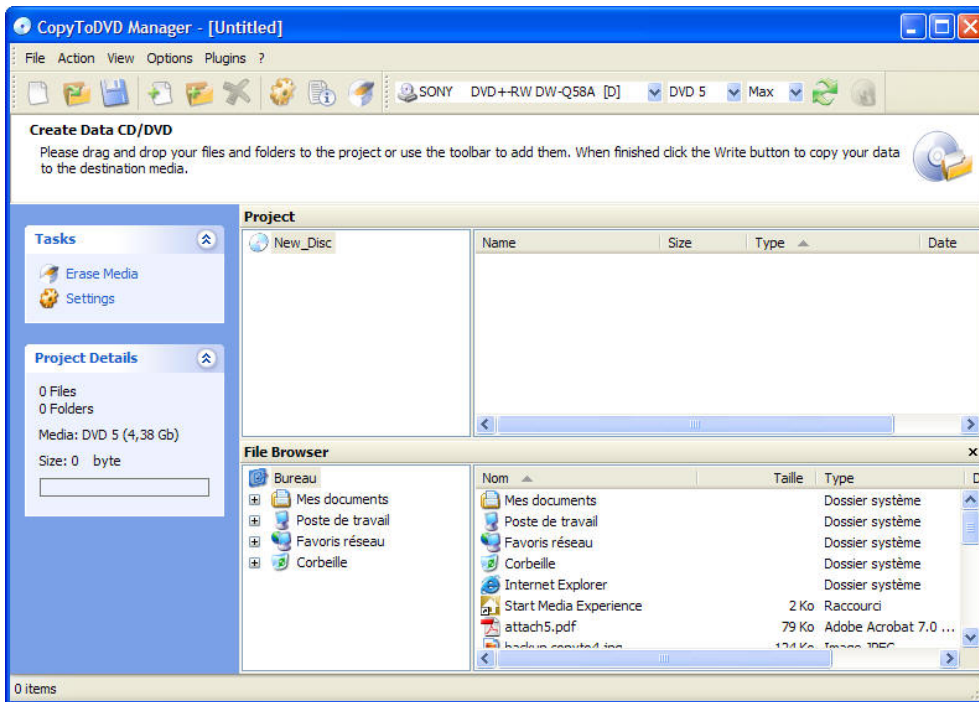
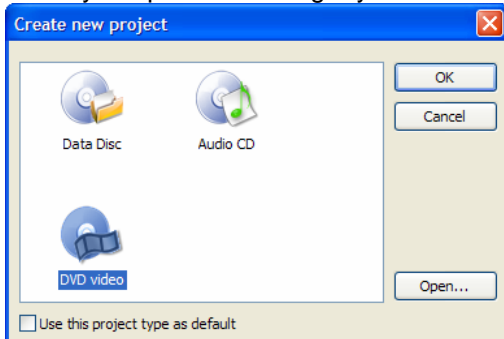



Figure 2


You can access the Manager directly by going to *Start* → *All Programs* → *vso* → *CopyToDVD* → *CopyToDVD Manager*". You can also access it through the Starter; to do so simply click on the task you would like to do (ex: Data), then click on "Create Data CD/DVD" and then you will see the Manager appear

When you open the manager you must choose which type of project you want to work on:



What the Starter offers

Don't know where to get started? Open up the Copytodvd (via the starter ).



The screenshot shows the CopyToDVD software interface with the following callout boxes:

- Copy (non copyrighted material)**
Make 1:1 copy (including burn)
Use a third party application to backup films
- Burn as data any type of file format,**
a simple burn as backup
Data CD/DVDs are made mostly to be read by computers only.
- Erase tool**
Define your settings
- Burn your films to be watched on your living room player**
Use *another* VSO product to convert other film formats to DVD so they are watchable on your living room player
Use *another* VSO product to make a DVD slideshow of your photos
- Burn a CD of your music so that it is playable on any CD player**
Listen to your music using VSO Media Player
Use a third party application to, for example, rename and tag your files automatically or burn music DVD .

Data

Create Data CD/ DVD/Blu-Ray

(opens Manager) See "Create a data CD/DVD" page 15

Schedule a backup

With CopyToDVD you can set up dates for when you would like to make a backup of a set of files or folders. To do this, from the main menu click on *Data*, then choose *Schedule a Backup*.

Clicking on add will allow you to give a name to the task you are creating. Then choose what files and/or folders you want to be backed up and also at what interval of time (i.e. daily, weekly, etc).

Copy

Copy / Music /Data / Games

(opens the *light version of Blindwrite*)

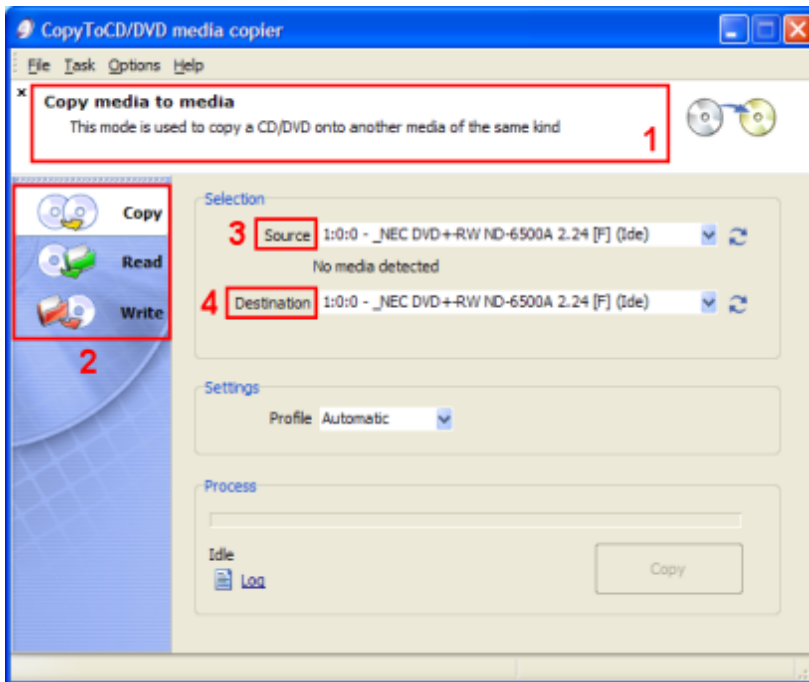


Figure 3

On the left side you will find the tasks **Copy**, **Read**, and **Write**. Each has a corresponding picture and each have different functions. The function of the selected task is described in the info area (1).



Copy

Makes an exact copy. You can do this with just one burner if you do not have two, you will just be prompted to switch media after the copy has finished before burning. To it this way with one burner, a copy of the media will be stored on your hard drive then burnt back to a new black disc.

Any files copied onto your hard drive by Blindwrite will be stored as Blindwrite images. These images are a set of several files (depending on their size . . . etc). By default they are stored in My Documents/ Blindwrite and there your copied files ending in .B01, .B00, .B6I, etc. These images can only be used by Blindwrite (for burning) or by daemon tools (emulation).

Select the *Source* (3), the drive which contains the CD or DVD you want to copy, then select the *Destination* (4), the burner which should contain a blank media to burn contents onto. You can select the same source and destination, you will just need to put a blank media in the burner after the copying process has finished.

Click *Copy* button at the bottom right hand side of window (which was grayed out before) will be available. As soon as you click it, the copy process will begin. The time this will take depends on the size of the original media and the burning speed available of your burner and media.



Read

Allows you to extract an image of a disc hard drive (to be emulated by a virtual drive or burnt to a disc later on).

Select the *Source*, the CD/DVD drive containing the disc to be read, then select the *Destination* (which will be an area on your hard disk where the image of the media will be stored).

Click on *Copy* (on the bottom right hand corner). The time this will take depends on the size of the original media.



Write

Allows you to write a harddrive image (such as Blindwrite images, ISOs, CloneCD files, etc) to a CD or DVD.

Select the *Source*, a CD/DVD image file on your hard drive, then select the *Destination*, the burner you want to use to burn this image with.

Click on *Copy*. The duration of time this will take depends on the size of the image file and the burning speed available of your burner and media.

*Blindwrite Profiles

If you do not know what profile to use, select automatic (see the option in the middle of figure 3 under Settings). For more information on profiles please see http://www.portmac.com/modules.php?name=BlindWrite6_Guide&file=Profiles or write to VSO Support.

Main Menu

The main menu found at the top of this window gives you some additional options concerning just Blindwrite.

File

Exit

Closes program

Task

Copy
Read
Write

sets up window for this action described above
sets up window for this action described above
sets up window for this action described above

Options

Settings

General

Set how often to check or an update on Internet, choose what you want to be done with image files when operation is complete, and what engine should do when presented with a rewritable media

Sounds

option to enable voice prompts

Language

select language for program to appear in

Theme

Change theme interface color and texture)

Media Statistics

information and option on sending your media statistics to VSO

Help

Contents
About
Open Log

opens a quick guide on Blindwrite
information about Blindwrite: version & copyright
opens Blindwrite log file in a separate window (for support purposes)

Copy DVD Video

(Suggests third party products)

As CopyToDVD does not copy video files but burns them, through the Starter you will find a way or will be proposed one in case you want to do such an action.

If you have DVD copy software installed such as DVDSHrink, DVDFab Decryter, and/or, 1 ClickDVDCopy, they should appear in a list like in figure 4.

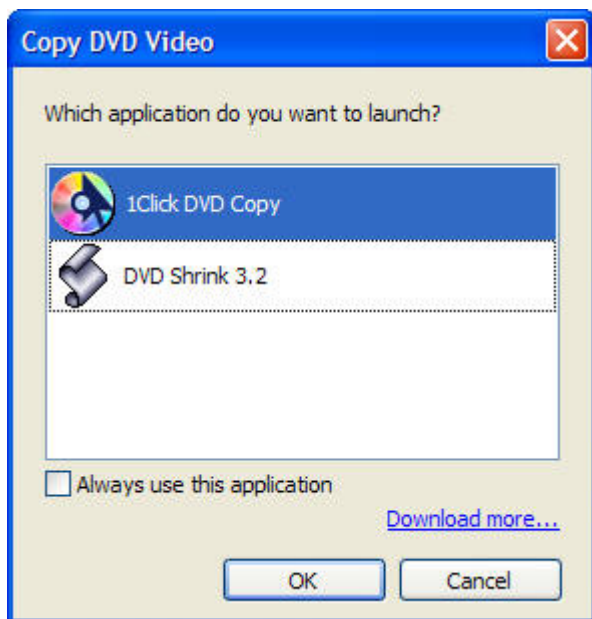


Figure 4

If no applications are displayed in this box and you know that you do not have any copy software on your computer already, click on "Download more" for a list of suggested programs.

If you do have copy software programs on your computer but they are not showing up in this list it is because the program in question was not installed in its normal default directory, therefore the CopyToDVD launcher does not know where to find it. Either download the software again, letting it install in the directory it proposes or you can (not recommended) add these by editing the "Command" key under the following registry entry.

How to add program in registry:

Warning: *Changing items which appear in the registry of your computer can disturb its normal functioning. If you do not know what you are doing it is best to have someone qualified in this domain to help you.*

In Example below "xxxx" is name of the copy software program:
 You need to edit the "Command" key under the following registry entry.
 [HKEY_LOCAL_MACHINE\SOFTWARE\VSO\Starter\3rdParty\ExtractDVDVideo\ "xxxx"]

Change it from "C:\Program Files\xxxx\xxxx.exe" to point to wherever you have the "xxxx."exe file.

Side note: DVD Decrypter will not show up in the list at all, but you can manually add it to the registry. Add a new key to:
 [HKEY_LOCAL_MACHINE\SOFTWARE\VSO\Starter\3rdParty\ExtractDVDVideo and call it DVD Decrypter, then in the right side you need to add two new "String Values". Call one Command and the other DisplayName, double click on the DisplayName entry and in the Value Data field put DVD Decrypter and click OK. Then double click on the Command key and in the Value Data field put the path to the DVD Decrypter exe and click OK.
 Close the registry editor and check if they now show up in the launcher.

This guide will not go over the details on how to use one of these other software products, but many guides exist. Here is a very simple one on how to extract you movie to your hard drive using DVD Shrink: <http://www.portmac.com/modules.php?name=Assorted&file=shrink>

If you think an application should be added, feel free to contact the support.

Movie & Pictures

Write DVD Video

(opens manager) See “Burn a DVD video” page 15

Copy DVD Video

(suggests third party product)

As CopyToDVD does not copy video files but burns them, through the Starter you will find a way or will be proposed one in case you want to do such an action. For more information, see section **Copy DVD Video**, as this is also covered there.

Create Photo DVD

(use another VSO Product, PhotoDVD)

Choose this option if you want to watch pictures on a stand alone DVD player; this will allow you to make an animated slideshow of your pictures accompanied by music and other effects. If you want to burn pictures for backup or exchange with friends simply create a “DATA CD or DVD”.

If PhotoDVD is not installed, you will get a window pop up “Feature is not installed. Do you want to download?” If you click on yes you will be taken to the VSO Software website where you will find a link to download PhotoDVD.

If you already have this product installed on your computer it will open it automatically. If you do not have a license key for PhotoDVD please make note that you will be using a trial version.

Audio



Create Audio CD

(opens manager) “See Create an audio CD” page 15

Play music

Opens a freeware application made by VSO Software called VSO Media player.

Right clicking on the top bar will give you options as you see on the left, figure 5.

Figure 5

Change Skin gives you the option to change the way VSO Media Player looks, i.e. change the color and style.

About VMP will give you information about the version and copyright.

VSO Media Player accepts the file formats:

MP3 (*.MP3), Ogg Vorbis (*.ogg), Windows Media Audio (*.wma), Monkey Audio (*.ape), Muse Pack (*.mpc)

Manage Music

(Suggests third party products)

If you have Copy DVD software installed such as Fengtao Audio DVD Creator and/or Audio Grail they should appear in the list.

See section **Copy DVD Video** for more information about using 3rd party product with CopyToDVD; the same applies to this situation.

Tools

Erase

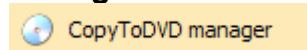
Clicking on *Erase* (which can also be found in the Action Menu in CopyToDVD Manager) will give you the opportunity to erase a rewritable media (CD-RW, DVD+RW, DVD-RW).

Select the writer which contains the media you want to erase, then select which mode you want to use for erasing: a fast but not thorough method, or a slow extremely thorough method that may take a long time. Click on *Erase Media* to start procedure.

Settings

(see "CopyToDVD Settings")

Manager Basics:



Menu Guide

This is a guide for the menu that appears in CopyToDVD Manager:

File Menu

Project:	New project	Opens a new blank project for you to begin creating Allows you to find an already composed or started project saved on hard drive or on disk
	Open	
	Save	
	Save as	Allows you to save your project so that if you do not have time to finish it you can pick up where you left off at a later time
Add file		Allows you to save project under a new name
Add folder		This opens your computers directory in order for you to select the files you would like to add to your project
C:\ . . . \		This opens your computers directory in order for you to select folders you would like to add to your project
Quit		Destination of your last couple of projects created.
		Exits and closes program

Action Menu

Write	Write the current project to a disc.
Erase Media	Opens window allowing you to select one of two ways on how to erase media

Write ISO/CUE
File depot:

With this command you can write an ISO image (.ISO) or a cue sheet (.CUE) to a medium.

Import
Erase

If the Use file depot option (see next section) is disabled, you can manually import the depot using this command.

Clears the file depot.

View Menu

Wizard style
File Browser
Arrange Icons by

If checked, CopyToDVD Manager appears as a wizard. The upper bar displays a short information text about the current project. Wizard style enabled: Wizard style disabled:

If checked this will add a section on left side of window presenting folders.

Clicking here gives you many choices on different ways in which to view your files and folders in window.

Options Menu

Close Manager when writing
Use file depot
Save window position
Don't prompt to save on quit
Theme
CopyToDVD settings
CopyToDVD Log

If checked, the manager is closed automatically as soon as you write a project. Provided, that it has been saved already. If not, a save prompt is displayed first.

If checked, the file depot is automatically imported during project creation. Files which are copied into file depot via Windows Explorer appear in your project.

If checked, the position of CopyToDVD Manager is saved, so the window does appear at the same position and with the same size every time.

Disables the warning prompt, if you didn't save your project before quitting.

Changes the color and theme of the manager.

Open the CopyToDVD settings dialog. More information can be found in the following section.

Shows logs (details) of past CopyToDVD attempted burns

Plugins Menu

VSOShow
VSOMediaPlayer

If checked and if burning images to a disc, this application (VSOShow) will be burnt onto the media, allowing the images to be viewed (in a slideshow manner).

If checked and if burning audio files onto a media, this application will be added to content burned onto media allowing this application be used to listen to audio files once media is burnt and being read.

? Menu

Online Help
Visit VSO Website
Info...

opens up quick tutorial

Link to VSO website

Shows copyright and version information

Projects:

What are they and what is the difference?

There are different ways to burn different projects in order to make sure the correct format of what you want to burn remains the same. If you burn your mp3s as a Data CD they may not play in your CD player for example. See below to see the difference in each type of project you can make:



Audio CD

Create an audio CD

An audio CD is one that can be played by any CD player, which means the format of the audio files are or will be converted automatically by CopyToDVD into an Audio CD (a format in and of itself).



Data Disc

Create a data CD/DVD/Blu-Ray

Can be used to burn any type of file(s). This option is mostly chosen for doing backups of important files or documents. When creating one of these projects you may be asked:

“You have added one ore more image files. Do you want to include an automatic slideshow in the project?”

If you chose yes, then **VSO Show** will be burnt onto the DVD along with your other documents this will allow you to view your pictures . VSO Show is a photo viewer that works on computers. It allows you to navigate easily through your images as well as display them as a slideshow.

If you add audio files to your project you may also be asked if you want to add an automatic **Media Player** in the project. This will add VSO Media Player to your project and that way if you take your burnt disc to a computer which has no music player on is already included on your disc allowing you to easily listen to the audio files that were burnt onto it.



DVD video

Burn a DVD video

Creates a DVD video that can be read by any living room DVD player. If you want to burn a movie onto a DVD, this is the option you should choose. CopyToDVD needs the movie to have a VIDEO_TS folder and its files (VOB, IFO) a proper DVD file system structure.

Interface setup

CopyToDVD has an interchangeable interface you can configure for your comfort. Here are some of the ways you can set up the interface.

Two additional windows can be opened or closed (Wizard Style and File Browser). To open these windows go to "View" in the Main Menu bar on the top of the window

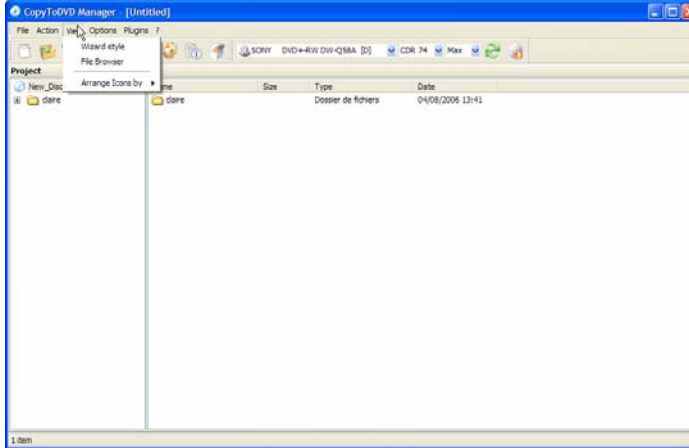


Figure 6

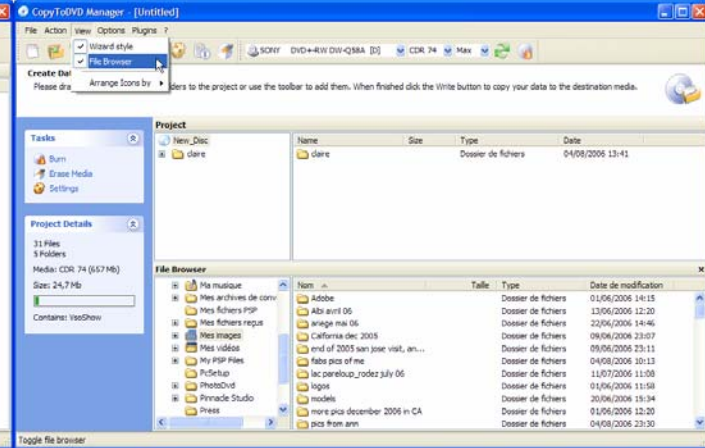


Figure 7

You can also have the file browser window detached or within the main frame window of CopyToDVD. To do so place your mouse on the words "File Browser" and click and drag out side of Manager interface. The File Browser is a tool to drag and drop your files into your project it is a useful when you want to avoid opening up other windows in order to find what you want to add to your project.

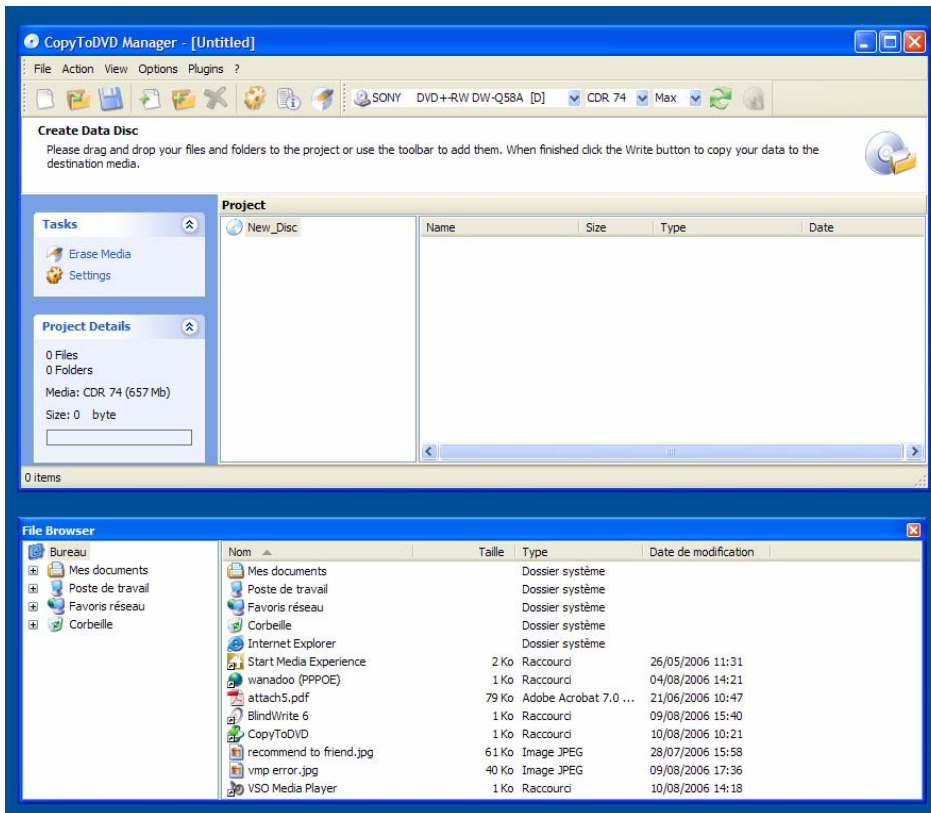


Figure 8

In figure 9 you can see that the "File Browser" is now placed on top of "Project".

Change how the space is divided within these windows by placing your mouse on the defining line until arrows appear, then move the bar to create more space where you want.

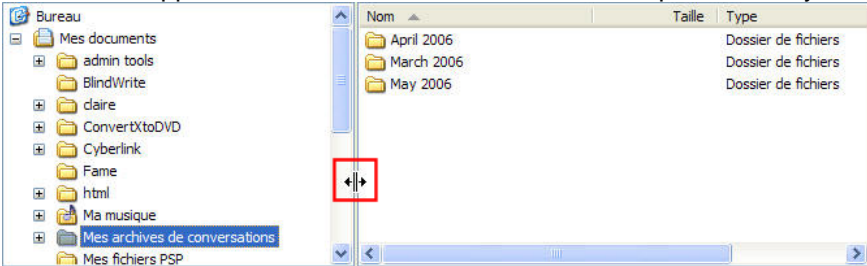


Figure 9

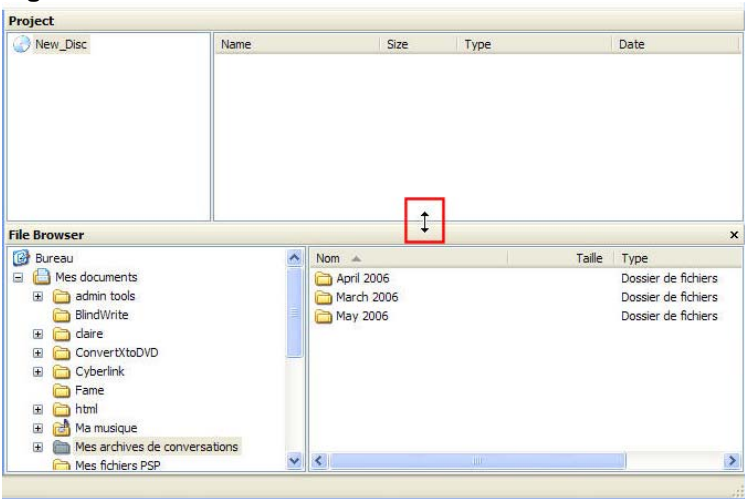


Figure 10

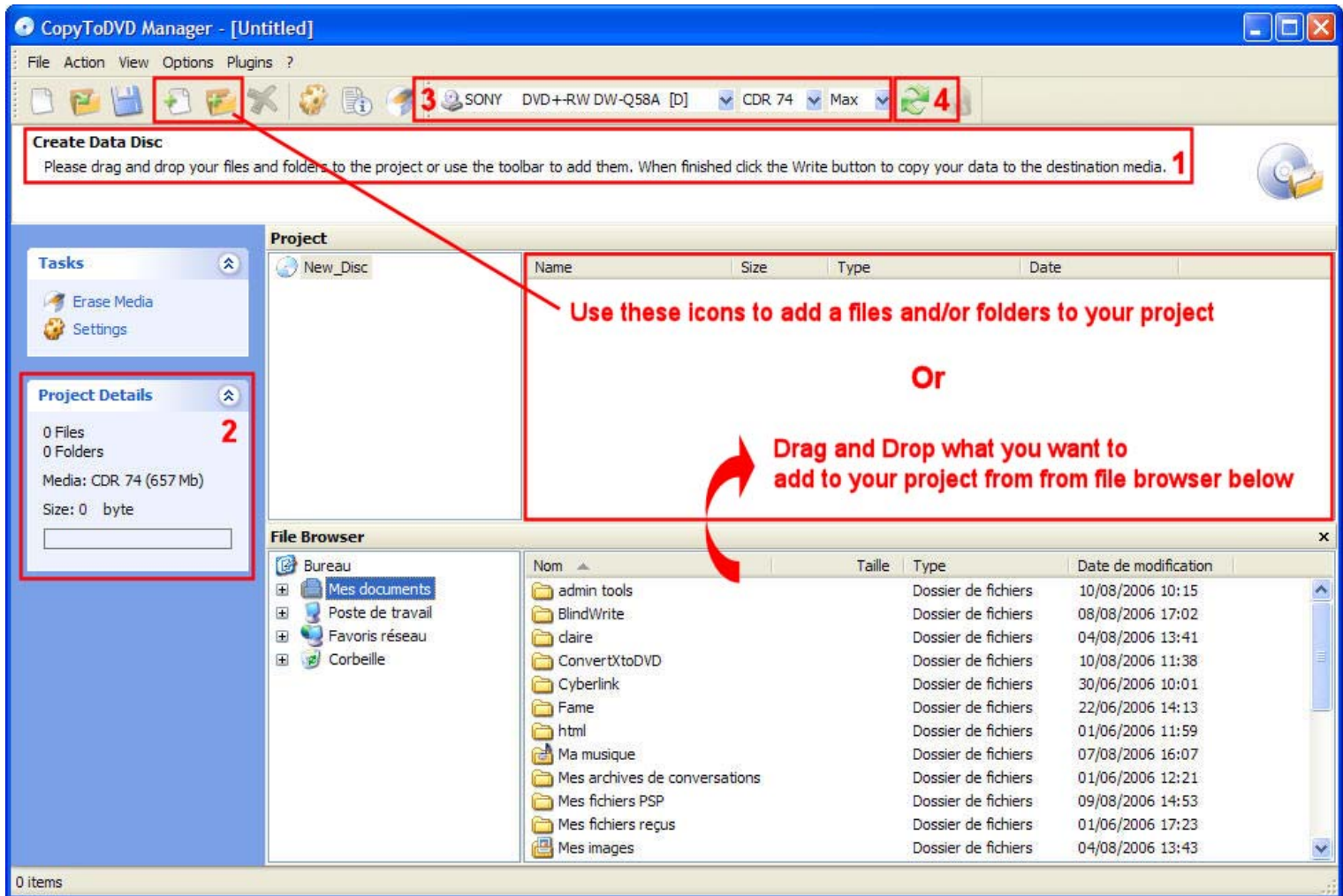


Figure 11

- 1 Explains what to do in this window
- 2 Shows your project details: How many files and folders you have added, whether you have added VSO Show or VSO Media Player, and the size used and available on your disc.
- 3 Shows the burner selected. You can click on the arrow pointing downwards to select a different burner. You will also notice what type of media is in the drive and the burn speed you have selected.
- 4 This is a refresh button. It will refresh the information in "3" (above) if you have turned on another external burner for example and it is not showing up in the list, hitting the refresh button will bring up fresh information and in this case, list the burner that was just turned on.

Create an ISO

You can create an ISO with CopyToDVD simply: go into settings and in the tab "writing engine", check mark "add "ISO File" destination to drive list". Creating an ISO will create an image of your project. It will be considered as one unit (not longer individual files or folders). You will be able to burn it later to CD or DVD.

There are the options for ISO image you will see when either using Manager or burning from the Shell:

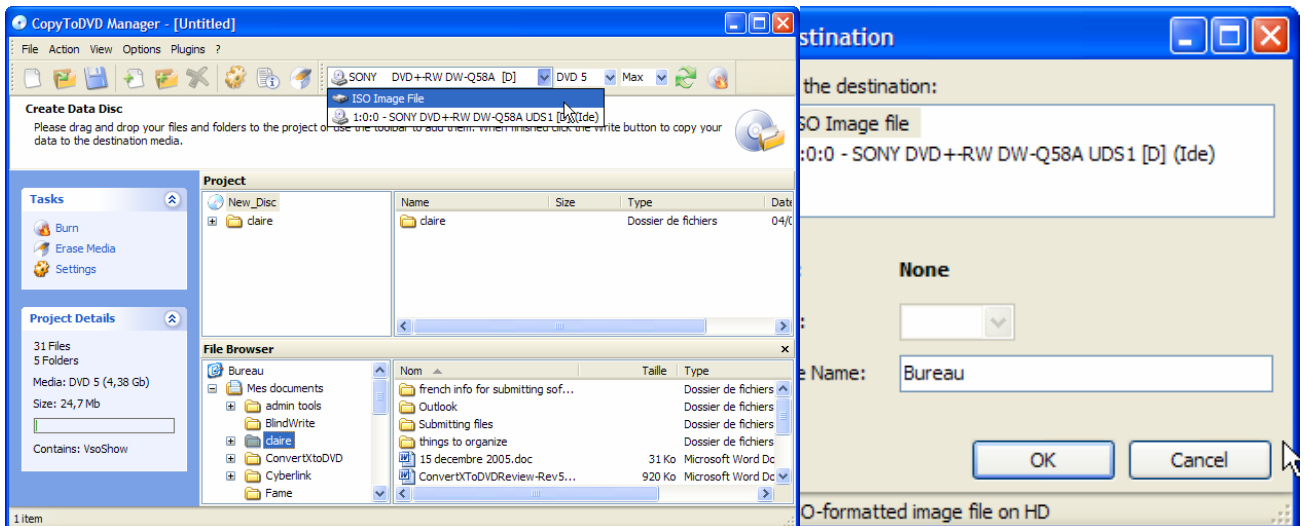


Figure 12

VSO Inspector: Check quality of burn

You have the option in CopyToDVD to have your disc scanned for errors after the burning has been completed. Go into the settings, tab "General" and check mark "Verify media with VSO Inspector".

As soon as your burn has finished VSO Inspector will open and will start to scan your disc.

If you selected the option "Eject the media" in the settings tab "General" you may need to put the media back into the drive for the scan to begin.

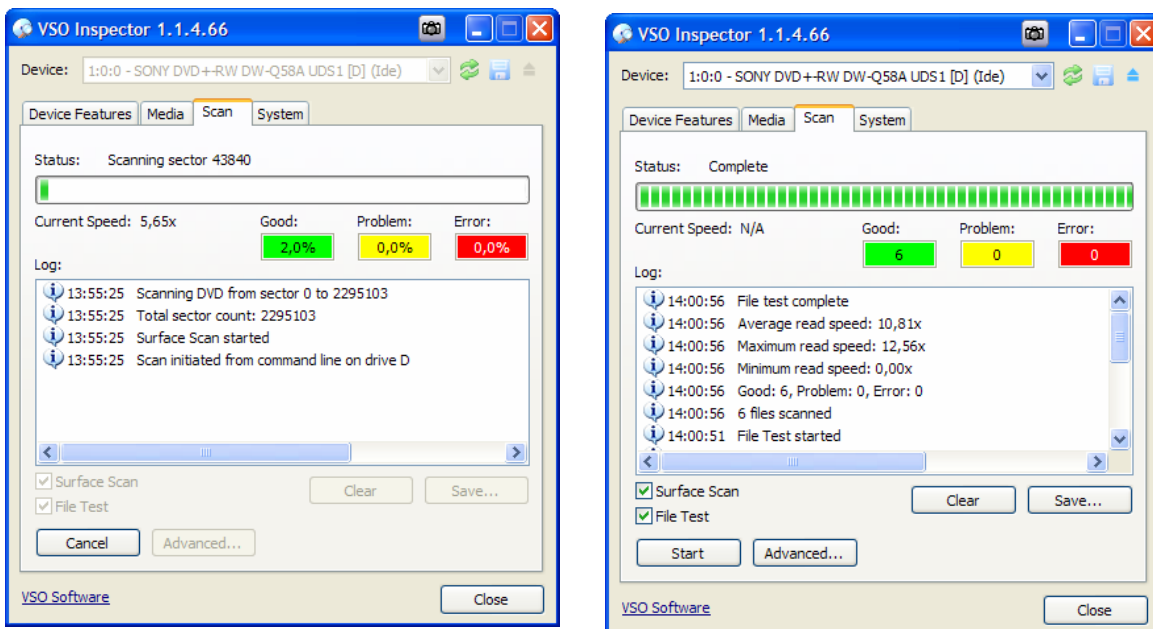


Figure 13

You will notice the speed change during the scanning process. Once the operation is complete you will see a line in the log file saying so (File test complete) and also the next to "status" you will see "Complete". You will be able to tell if there are errors or problems in any sectors on the disk.

The other tabs found in VSO Inspector are useful if you want to check on a firmware update for your drive, see what the format of a disc is if you do not know what spindle it came from, etc.

CopyToDVD Settings

This section describes the numerous settings of CopyToDVD. Here you learn how to customize the software to fit your needs. CopyToDVD's settings can be accessed either via CopyToDVD Manager or CopyToDVD's start menu group. This section is divided into the different tabs if accessed via the Starter / Tools / Settings:

Starter

Menu Behaviour

Disable Sounds	Deactivates sound associated with the Starter
Return to main page	Will return to main interface of the Starter once a task has been launched
Close launcher	Will close the Starter once you select an action you wish to be performed.

3rd Party Applications

Hitting reset will prompt the 3rd party application dialog box again. This would be useful, if in the past you would have selected "always use this application", and now you do not want that application to be your default application any longer. You will now be shown a list of all the third party applications you can use that are on your computer.

Manager

General

Do not close status window

Will not close the status window you will see during the burning process showing the log file.

Eject the media

If unchecked, CDs/DVDs are not ejected after writing is complete.

Verify media with VSO Inspector

After burn has completed Video Inspector immediately scans the burnt media for read errors in order for you to be confident about the readability of your fresh backup.

Advanced User

Will display more information during burning process (information not necessarily of interest for novice users).

Check latest version every ___ Day(s)

Here you can toggle CopyToDVD's auto update function, and specify the number of days between internet checks.

CD access

Open CopyToDVD's CD access driver configuration dialog.

Default values

Set all options on this tab back to factory defaults.

Display

Window is always on top

Check, if you want the writing process window to be displayed on top of other windows.

Auto Transparency (Windows 2000 and higher only)

If checked, the writing process window is turned transparent after a short delay, when the window loses focus (becomes inactive). Moreover, you can specify the opacity and delay in seconds.

Show details

Will show the log file window so you can see what is going on during each minute of the burn.

Label

Prompt to edit the label

Before every writing process you are asked to enter a volume name (label) for the CD/DVD.

Auto-assign a label

CopyToDVD sets the label automatically. The following options are possible:

- Fixed name: The specified text is used as label every time (i.e. CDROM)
- Fixed name + date: The specified text is combined with the current date (i.e. CDROM_20030131)
- Date: The current date is used as label (i.e. 20030131)
- Source name: The name of the containing folder is used as label (i.e. DATA)
- Source name + date: The name of the containing folder is combined with the current date (i.e. DATA_20030131)

File System

Warn user on file change

If checked, a warning is displayed in case files have been changed after caching. You should leave this option checked, as the writing process may fail if a file is changed after it has been cached.

Include system files

If checked, system files are written to the medium. If unchecked, they will be ignored.

Include hidden files

If checked, hidden files are written to the medium. If unchecked, they will be ignored.

Preserve path name

If checked, the folder's full path name will be preserved. For example, if you write folder C:\Data\Projects, the CD will also contain a folder Data with subfolder Projects. If unchecked, only the Projects folder will be written to the CD.

File formats

ISO 9660 (MS-DOS)

This format is required for the CD to be readable under DOS.

Joliet

This format is required for long filenames (Windows 95 and higher) and Asian characters. NOTE: If unchecked, long filenames will not be written correctly.

UDF 1.02

This format is required for very large files. NOTE: If you write a DVD movie using a Video DVD project in CopyToDVD Manager, this option will be used automatically.

CGMS

This option is only required for video DVD. NOTE: If you write a DVD movie using a Video DVD project in CopyToDVD Manager, this option will be used automatically.

ISO file version

If checked, the file version (normally ";1") will be written for ISO 9660 file format.

About

On this tab CopyToDVD's version number is displayed. Moreover, you may enter your unlock code here, if you have purchased a license key for CopyToDVD.

Rewritable media

Erase RW when needed, without warning

If checked, rewritable medias are erased automatically if they contain data.

Erase mode

- Quick: Only the table of contents of the RW is erased (Standard)
- Slow but safe: The RW will be completely erased (this might take very long)

Audio

Automatically adjust sound

The audio file's volume will be automatically adjusted to the specified decibel level.

Sample sound

Here you may choose an audio file to test the adjusted level.

Remove 2 sec gaps between audio tracks (Dance Mix)

A typical audio CD contains 2 seconds of silence between each track (song), with this option checked these 2 seconds will be removed.

Writing devices

Here you can specify your preferred writers for Audio/data CD or DVD and one for DVD Video.

Prompt (Audio/Data)

If checked, you will be prompted to select a destination writer before each writing process.

Prompt (DVD Video)

If checked, you will be prompted to select a destination writer before each writing process.

DVD-R SAO first

Will used this writing method first (instead of packet writing)

Max. Writing Speed:

You can select the maximum writing speed you would like to be used for each type of disc.

Media Statistics

Gives you option to choose whether or not you give VSO Software permission to collect your burning information. Here is more information about last option "Allow VSO-Software to collect media statistics":

In order to improve the quality of our software, and to establish a chart of good media based on the end user's experience, we are collecting media and hardware information.

Each time a burn process has been finished, information about the process (software version, used writer and media, success/failure) is submitted to our server.

As an internet connection is required, you should only activate this feature if you have a permanent connection.

NOTE: We do not collect any information that may help to identify a given computer or person!

Sound Events

Play Sound Events

Here you can specify an audio file, which will be played after a CD/DVD has been written. If unchecked, no sound will be played.

Event Logging

Save logs

If checked, CopyToDVD's logs are saved to a file.

Keep log history

If checked, new logs are written to the beginning of the log file. Old logs are kept. If unchecked, an old log is overwritten with the new one.

Log file

Here you can specify the name and path of the log file.

NOTE: The log file might be required by the technical support team to solve a problem.

Maximum line count in log file

If the specified number of lines is exceeded, old logs will be erased.

Writing engine

Add "ISO File" destination to drive list

If checked, files will not be written to a medium, but into an ISO image, which can be burned later or mounted as a virtual drive (i.e. with [Daemon Tools](#)).

Prompt for another copy of the same media

If checked, CopyToDVD will ask after each writing process, if you would like to create another copy (another copy button) of the same project.

Automatic temporary folder

If checked, CopyToDVD will choose the best place for temporary files automatically. If checked "Manual", you will need to specify a place yourself.

Clean temporary files . . .

Delete all ISO images created by CopyToDVD from your hard drive.

Cache management options

Here you can specify which data will be cached. Before writing, an ISO image will be created on your hard drive for caching. This is recommended for all sources, which cannot be accessed with sufficient speed to burn.

All files

All files are cached without exceptions (for slow hard drives).

Files on network

Files from network sources are cached (default).

Files from removable media

Files from floppy disks, CD-ROM, memory cards, etc. are cached (default).

Files under the following size (KB)

Files smaller than the specified size (in KB) are cached (default).

Multisession

Create/continue multisession media

If checked, data CD's are not closed. This means other sessions (data and other files) can be written to the medium.

If erasable media is detected, prompt to erase it

If checked, CopyToDVD will ask to erase the recordable, if you insert a multisession CD-RW.

If a multisession media is inserted, what shall the engine do?

- Ask what to do: When writing to a multisession medium, a choice dialog is displayed.
- Eject the media, and require a blank one: CopyToDVD will not write to the medium, but asks for a blank one.

- If there is enough space left, write the data and try to keep the media writable: If there is enough free space, data will be written to the medium and it is not closed, to make further sessions possible.
- If there is enough space left, write the data and close the media: If there is enough free space, data will be written to the medium and it is closed. There are no further sessions possible.

Keep volume name and description

If checked, the old session's volume name and description are kept.

Import existing data with the following rule

If checked, existing files on the CD will be imported into the new session.

NOTE: If you uncheck this option, only the files of the new session are present.

- Replace file if newer or size changed: When you write files which are already present on the disc, the existing version will be replaced by the new file, if the new one is newer or its size is different.
- Always replace file: An existing file will always be replaced by the new version.
- Never replace file: The file present on the disc will be kept. The new file is ignored.

Language

Here you can select your preferred language for CopyToDVD's user interface. This setting is also used for CopyToDVD Manager.

NOTE: To make the changes effective, you may have to restart the Manager.

FAQ

What is the importance of the type of media I use?

What type of Media (DVD's or CD's) is used can make a big difference in your burning results. There are so many brands of CDs and DVDs on the market today that it is very easy to find what we call poor or cheap media, simply implying that the quality of those discs are not very good. VSO has been collecting information about media statistics and also media and drive compatibility. Via VSO Inspector under the media tab you can click on "Query Database" to see what the success rate is for the drive and media you have selected. Currently on the market Verbatim and Taiyo Yuden media have a good reputation on the market.

CD and DVD burners can be picky so when you find something it likes, giving good results stick with that type and brand of media.

It can happen to fall upon a bad batch of media and none of them will be good at all. These can basically be tossed into the garbage; you can try and get a refund by the manufacturer.

Other info: Double layer media is less reliable than single layer.
 +RW are more reliable than -RW
 + R better than -R

Compatibility

Not all software is compatible with every type of media. CopyToDVD is compatible with CD-R(W), DVD-R(W), and DVD+R(W) and DVD-RAM writers and also with the new Double Layer format (9 GB on a DVD). There is also Blu-Ray media holding a total of 25 GB of information, but needing its own reader and writer for compatibility.

R stands for Recordable

RW stands for ReWritable (media can be erased and used again).

DVD (-) media tends to be the most compatible with standalone DVD players (between 5 and 10% more reliable than (+) media). This quite probably due to the fact that is the first type and thus oldest type of media on the market.

For more information on DVD Media check out: <http://www.videohelp.com/dvd>

Simply because CopyToDVD is compatible with these formats this does not mean you will be able to burn them, because if your burner is not compatible with the media you are trying to use, the burn will be unsuccessful.

Same applies when trying to play your burned CD or DVD. The media player must also be compatible with the format of the media.

Note on Burners

VSO has noticed that Plextor has been the most reliable drive, although LiteOn is a cheaper alternative, most of the recent drives are completely acceptable and new models are out so frequently. We have also noticed that Nec drives are better than Samsung, but we suggest reading the forums for real customer's feedback or checking our media statistics.

If you would like our advice on buying a burner please contact our support.

Also know that CD burners generally do not burn DVD's however, DVD burners generally burn CD's.

Double Layer and CopyToDVD

What is Double Layer Media?

A Double Layer media is one with two layers where data can be stored. These two layers are found on the same side of the media, (the first layer is semi-transparent to allow the second, underneath to be read). Double layer media can hold twice the amount of data compared to an ordinary single layer disk. This is an evident advantage when trying to burn very long movies. Most commercial movies are 9 GB.

Do note that if you plan on using double layer media do pay attention to compatibility issues. First your DVD Burner must be compatible with double layer media as well the software used to burn the media with. All DVD players are supposed to be able to read double layer media, but as you may find with experience this may not always be the case.

Reading the Double Layer Media

Burning a double layer media, the layer change can be made at any point in the data being burned (this does not have to be at an intermission or preset chapter). For double layer media there is no guarantee that there will be no gap when switching from first layer to second layer while viewing the media. This gap can be unnoticeable or freeze for a tenth of a second or more (up to four seconds). This depends on the media player as well as the set up of the double layer media before burned.

Source of information above in section "double layer": <http://www.dvd-recordable.org/FAQ-Category6-D+Basics-Parent0-myfaq-yes.phtml#28>

Using double layer media with CopyToDVD is really no different than burning with any other single layer media. The placing layer break is done automatically by CopyToDVD. It is done based on various criteria allowing for the change between layers to be nearly invisible when watching with a DVD player.

Blu-ray

CopyToDVD 4 is compatible with Blu-ray Media. Of course you need a Blu-ray burner and media. You can burn a data disc for Blu-ray, this means you can burn up to 25GB worth of data.

Technical Support

From this page <http://www.vso-software.fr/support.php> you will find various ways to get help.

- There is an email form for all technical support if you would like to send in directly to VSO.
- There are links to various forums where you can post a thread or read threads from other users of CopyToDVD.
- There is another FAQ for more trouble shooting, and more tutorials in case you need help with another one of our products (that may have accessed through the starter: ConvertXtoDVD or PhotoDVD).

Troubleshooting

If you run into problems when using CopyToDVD go through this checklist to rule out any of these factors:

- 1) Are you using the latest version of CopyToDVD? Go to "Settings" and the about tab to see what version you are using, then check on <http://www.vso-software.fr/> at the top right corner of this webpage to see if your version corresponds with the latest version available. New version release means, better software, fixed bugs, and better overall compatibility. Therefore it is always better to use the latest version available.
- 2) If you encounter an error, make sure compatibility is not an issue. Check to make sure software and hardware are compatible, software and media, as well as media and burner.
- 3) Do you have the latest firmware for your hardware (CD/DVD writer)? If you are not sure, check the information on this page: <http://www.cdrinfo.com> or <http://www.rpc1.org>

- 4) If you get an error "Patin Couffin not present or up to date" or "Can't connect to hardware access layer" when using BlindWrite and/or CopyToDVD do the following. Click *Start>Programs>VSO>CopyToDVD (or BlindWrite)>Drivers* then click on *Remove* and reboot. Now do the same but click on *Install* and reboot again. Or you can simply re-install the software package.
- 5) If you need a more detailed checklist go to: <http://www.vso-software.fr/checklist.htm>
- 6) You might also want to check the "Frequently Asked Questions" page at VSO software: <http://www.vso-software.fr/faq.htm>

Upgrades

Each key allows one year of free upgrades beginning from the date of purchase. After this year, you should contact us to receive a special renewal offer, or continue to use the last working version. The version doesn't expire after one year for registered users, if you have a license problem after one year, contact us we will provide the latest working update for your license.

Unless you have the Goldmembership subscription entitles you to use all current VSO-Software products as well as upcoming ones for your lifetime.

Command line and SDK available

Please contact our support for more information.

Copyright

Copyright © 2003-2006 VSO-Software SARL, France. All rights reserved.

Windows® is a registered trademark of Microsoft Corporation in the U.S. and other countries. All rights reserved.

All other trademarks are the property of their respective owners.