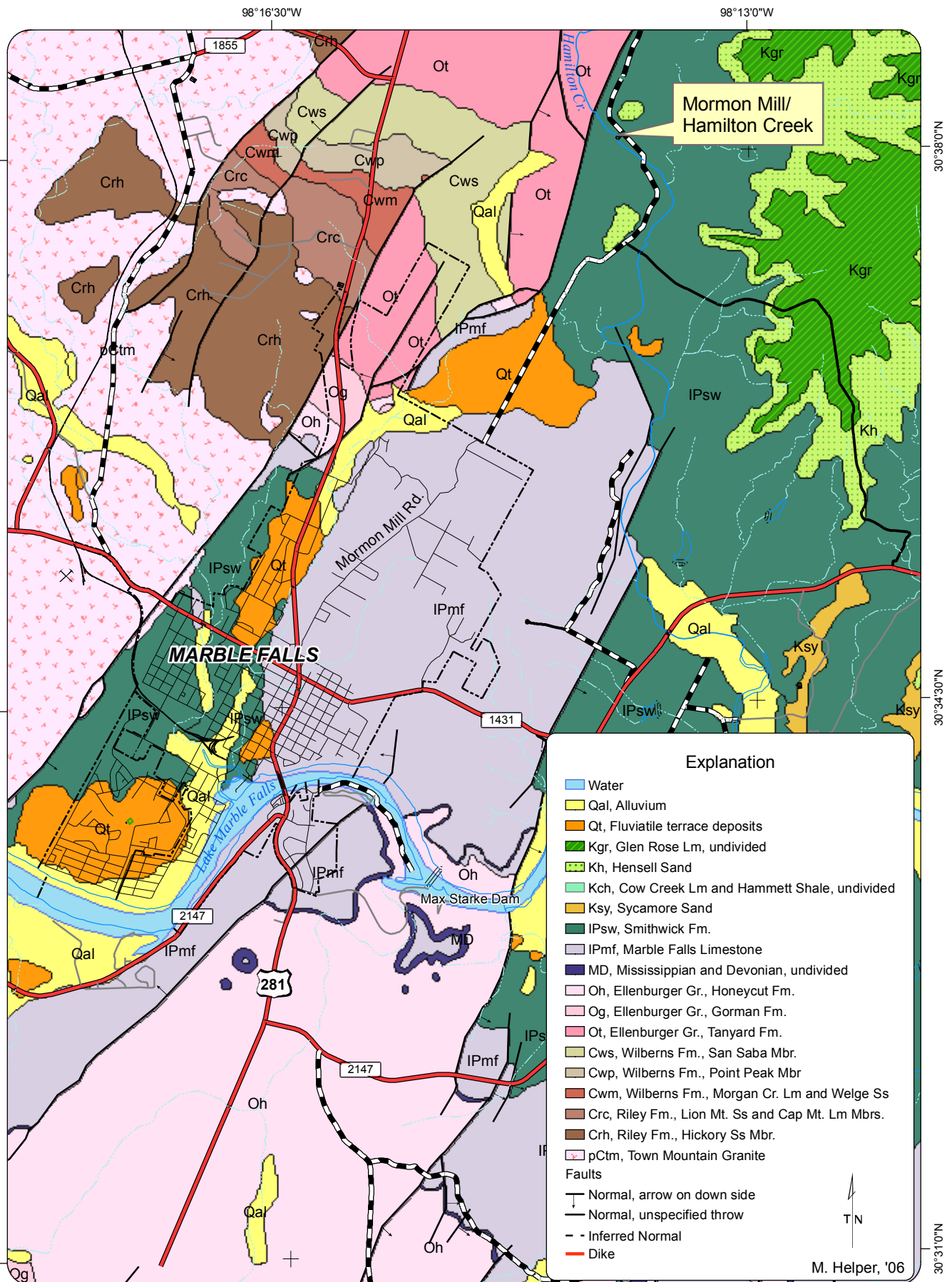


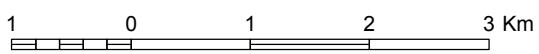
Geologic Map of the Marble Falls Area, Burnet County, Texas



Explanation

- Water
 - Qal, Alluvium
 - Qt, Fluvial terrace deposits
 - Kgr, Glen Rose Lm, undivided
 - Kh, Hensell Sand
 - Kch, Cow Creek Lm and Hammett Shale, undivided
 - Ksy, Sycamore Sand
 - IPsw, Smithwick Fm.
 - IPmf, Marble Falls Limestone
 - MD, Mississippian and Devonian, undivided
 - Oh, Ellenburger Gr., Honeycut Fm.
 - Og, Ellenburger Gr., Gorman Fm.
 - Ot, Ellenburger Gr., Tanyard Fm.
 - Cws, Wilberns Fm., San Saba Mbr.
 - Cwp, Wilberns Fm., Point Peak Mbr
 - Cwm, Wilberns Fm., Morgan Cr. Lm and Welge Ss
 - Crc, Riley Fm., Lion Mt. Ss and Cap Mt. Lm Mbrs.
 - Crh, Riley Fm., Hickory Ss Mbr.
 - pCtm, Town Mountain Granite
- Faults**
- Normal, arrow on down side
 - Normal, unspecified throw
 - Inferred Normal
 - Dike

Geology from Geologic Atlas of Texas, Llano Sheet



1:63,360

M. Helper, '06