

# HANDSET Controller



2 button handset controller



4 button handset controller

## CONTENTS:

2 Button Controller	<a href="#">2</a>
4 Button Controller	<a href="#">3</a>

# 2 Button Handset Controller

# Zenith

## Features:

Zenith Handset controller is a product of thoughtful innovation and customer-driven enhancements. The controller is a minimalist user interface with discrete user and technician buttons, Anti-bumping height adjustment features, child lock, and has the ability to set top and bottom reset positions.

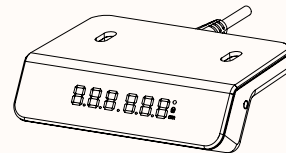
## Finishes:

Controller: Black



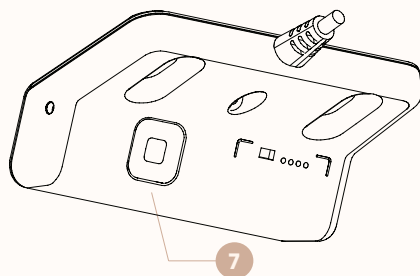
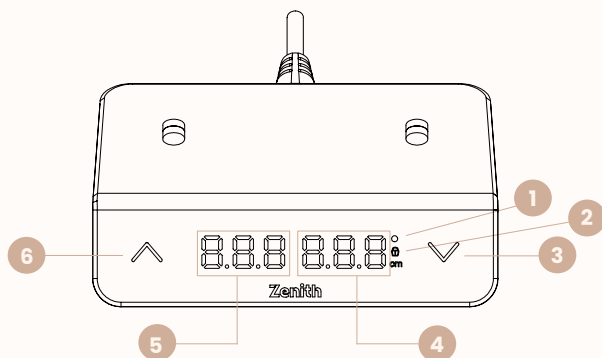
Black

## Dimensions:



### 2 Button Handset

OW 100mm  
OD 55mm  
OH 25mm



- 1 'C' Confirmation**  
Flashes when commands have been accepted
- 2 Child Lock**  
On when height is locked
- 3 Drive Down**
- 4 Orange Display**  
Table number & table height display
- 5 White Display**  
Building level number
- 6 Drive Up**
- 7 'A' Button**  
To set preset heights (3 settings)  
To enable child lock

Please see user manual for instructions

# 4 Button Handset Controller

# Zenith

## Features:

Zenith Handset controller is a product of thoughtful innovation and customer-driven enhancements. The controller is a minimalist user interface with discrete user and technician buttons, Anti-bumping height adjustment features, child lock, and has the ability to set top and bottom reset positions.

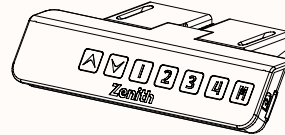
## Finishes:

Controller: Black



Black

## Dimensions:

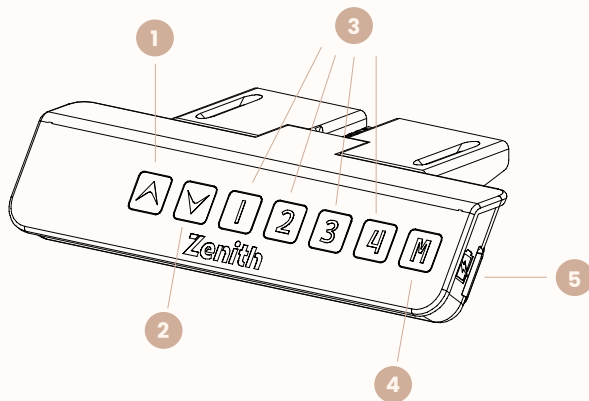


### 4 Button Handset

OW 149mm

OD 50mm

OH 25mm



- 1 Drive Up
- 2 Drive Down
- 3 Memory Positions
- 4 Memory Button
- 5 18W fast charging USB-A port

Please see user manual for instructions