



# Company Introduction

*Dongguan City Xinying Electronic Co., Ltd.*

**TEL:**+86 0769 3887 0998      **FAX:**+86 0769 3887 0989

**Website:** [www.xinelec.com](http://www.xinelec.com)

**Email:** [service@xinelec.com](mailto:service@xinelec.com)

**Alibaba website:** <https://xyings.en.alibaba.com>

# Company Introduction

## *Factory environment*



Dongguan City Xinying Electronic Co., Ltd. has been manufacturing wiring harness in China since 2004. We are a custom manufacturer of electrical wire assemblies. Electrical wire assemblies such as tinned copper wire assemblies, automotive wire assemblies, battery cable wire assemblies, coaxial cable wire assemblies and different connector cable wire assemblies. Electrical wire assemblies include electrical wire and cables, terminals, plugs, connectors, relays, fuse holders and control boxes. Electrical wire assemblies can be fabricated in many different color and gauge combinations. Capabilities include injection molding for custom molded plugs, crimping, wire cutting and spiral striping, wire marking and assembling. Made in China.



## *working environment*

Show us your idea, show you your quality custom wiring harnesses!



# What are we capable of ?



Show us your idea, show you your quality custom wiring harnesses!



# What are we capable of ?

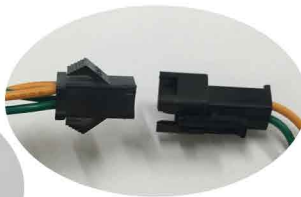


Show us your idea, show you your quality custom wiring harnesses!

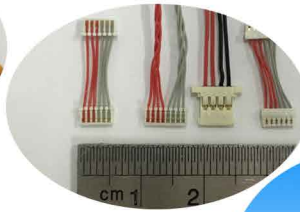


# What are we capable of ?

male female connectors



short cable/ small connectors



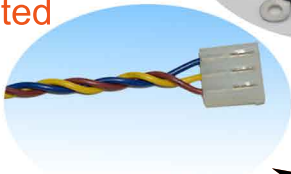
heat shrinking tube



rainbow ribbon cable



twisted



U type connectors



fabric insulation tape



custom moulding



moulding

spiral cable



T type moulding



flag type crimping terminal



SMA/coaxial cable

# Our Workshop



*terminal crimping area*



*molding process area*



*assembly*

*workshop*



# Our Workshop



*material ware house*



*wire cutting machine*



*voltage resistance  
test machine*

# Our Workshop

*comprehensive cable tester*



*cable/connector tester*

*conductivity test*



*high voltage test*







*Resistance  
to bending  
test*

# Our Workshop



*mould area*

*wire cutting  
terminal crimping  
machine*



*samples*

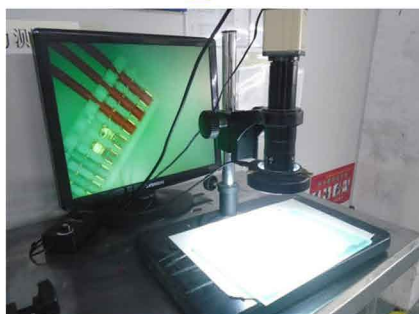


*tensile tester*



*packing area*

*professional engineer*



*CCD tester*

