



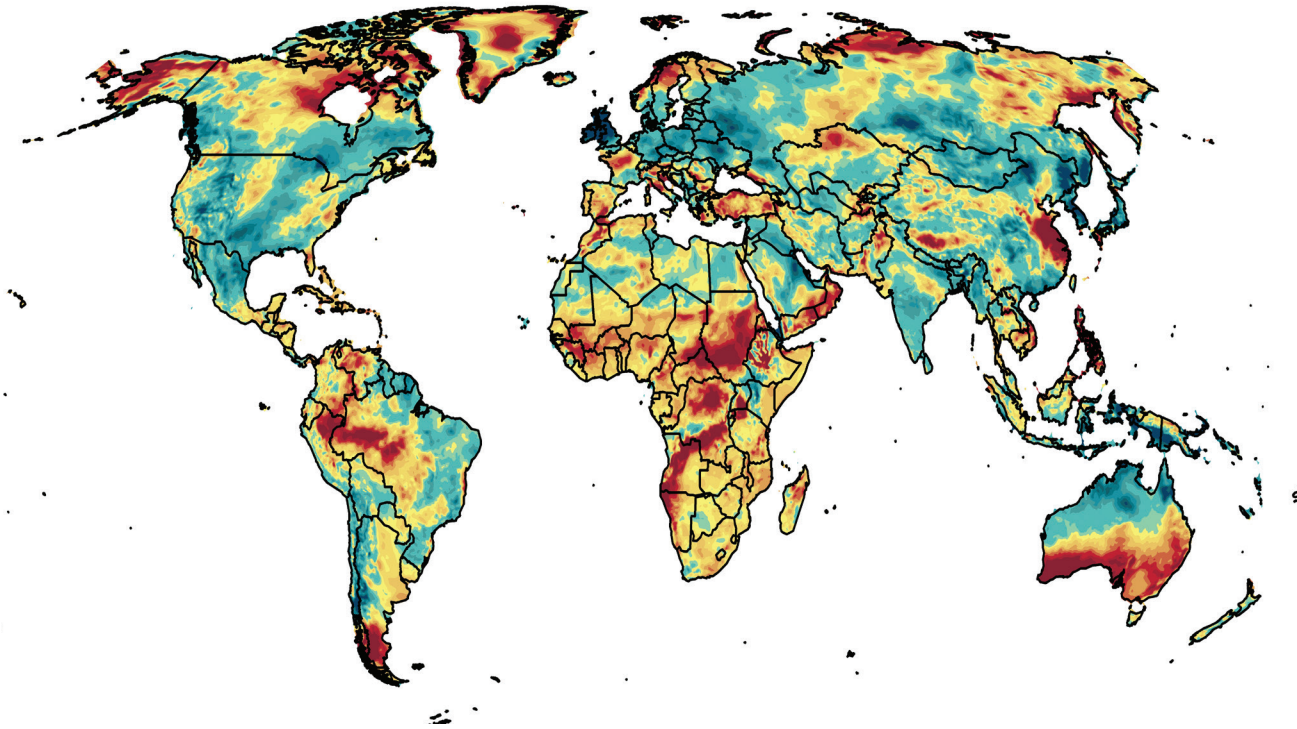
2021 | July

Wind Trends

Global wind speed performance

2021 | July

Global



The Wind Trends Bulletin depicts anomalies of the global wind resource from the historical norm on a monthly, quarterly, and annual basis. The anomalies are calculated as a percent deviation from the 1995 – 2019 mean speed at 100-m above ground level for the calendar period. The latest Wind Trends dataset is derived using the ERA5, a contemporary global reanalysis dataset. For more information about customized analyses for your project portfolio, data or subscription options, please contact us at renewableenergyservices@ul.com.

[Download](#) index values for even more wind power producing countries!



Wind Trends
Global wind speed performance

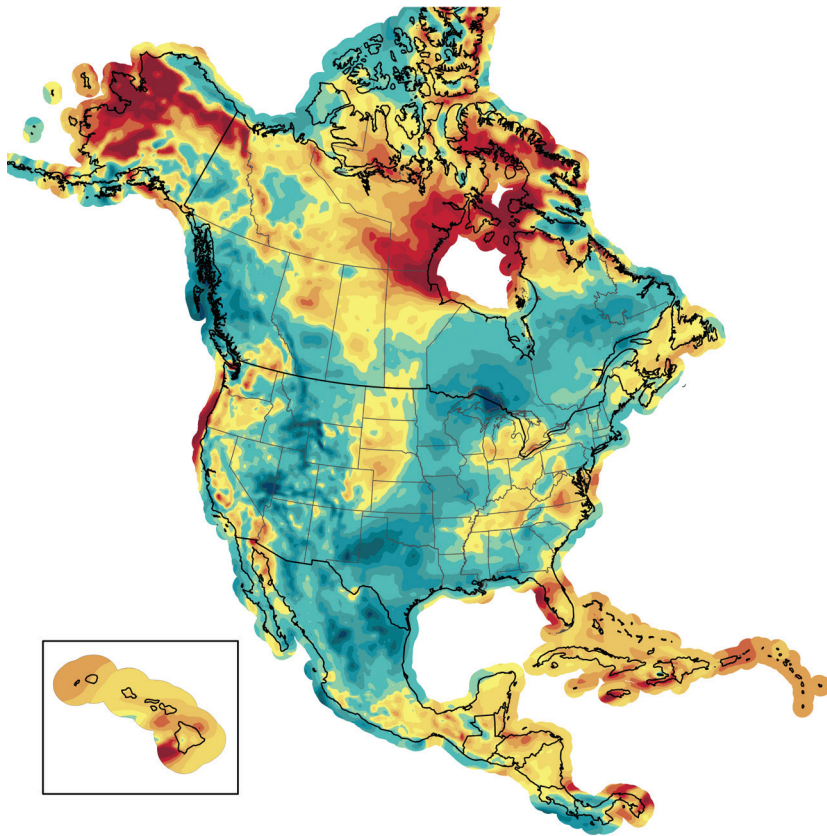
+1 518 213 0044 | ul.com/renewables



above average
wind speeds

Wind Speed Anomaly (%)

below average
wind speeds



2021 | July

North America



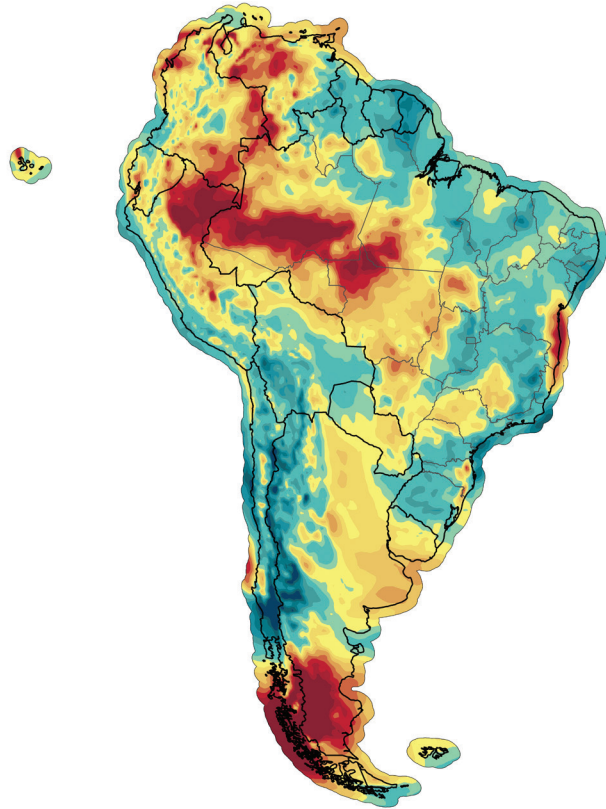
Wind plant locations source:
Windpower Monthly Intelligence



Wind Trends
Global wind speed performance

+1 518 213 0044 | ul.com/renewables





2021 | July

South America



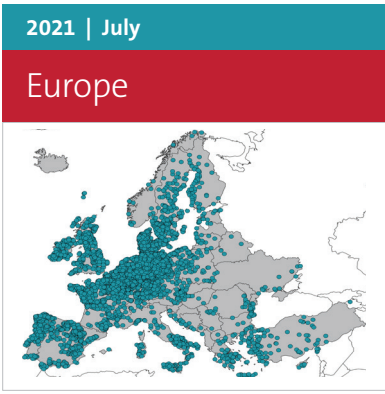
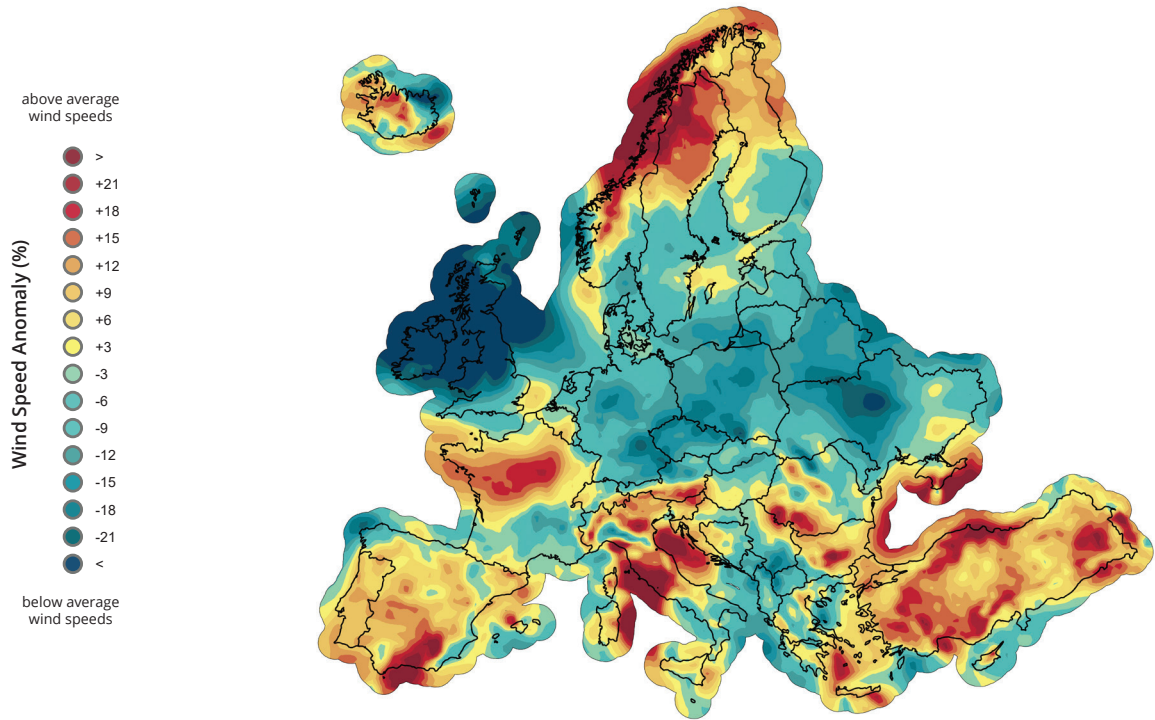
Wind plant locations source:
Windpower Monthly Intelligence



Wind Trends
Global wind speed performance

+1 518 213 0044 | ul.com/renewables





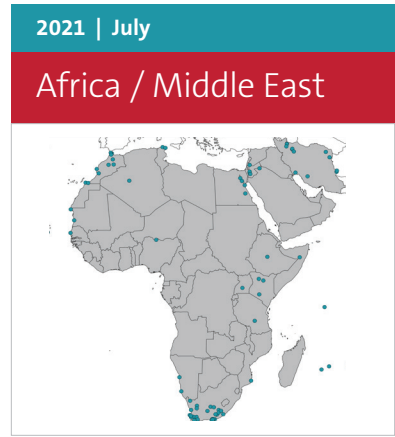
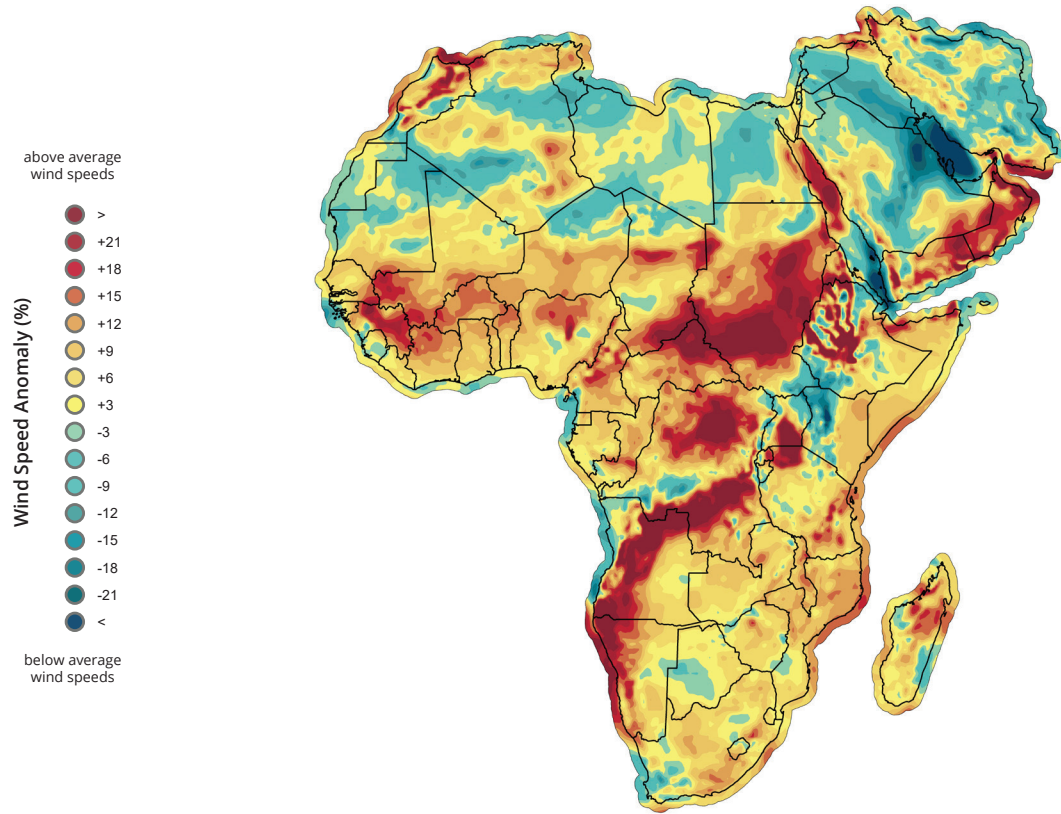
Wind plant locations source:
Windpower Monthly Intelligence



Wind Trends
Global wind speed performance

+1 518 213 0044 | ul.com/renewables





Wind plant locations source:
Windpower Monthly Intelligence



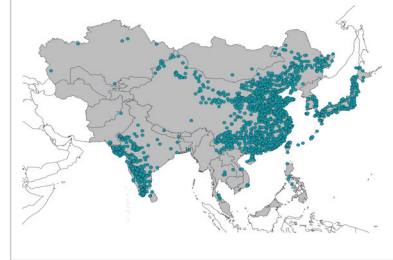
Wind Trends
 Global wind speed performance

+1 518 213 0044 | ul.com/renewables



2021 | July

Asia



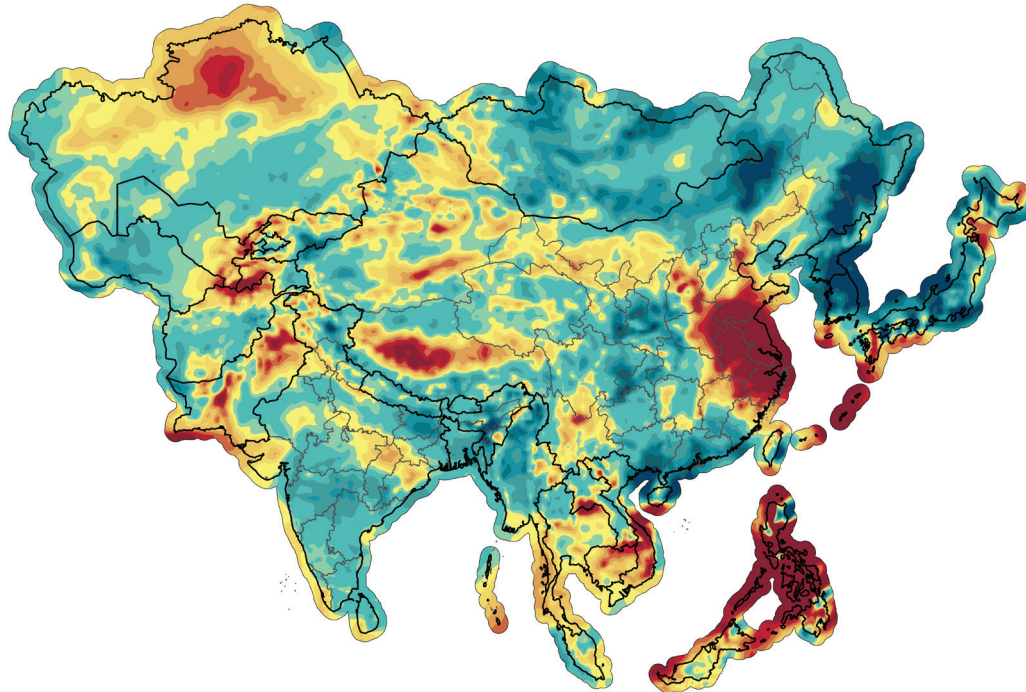
Wind plant locations source:
Windpower Monthly Intelligence

above average
wind speeds



Wind Speed Anomaly (%)

below average
wind speeds



Wind Trends

Global wind speed performance

+1 518 213 0044 | ul.com/renewables

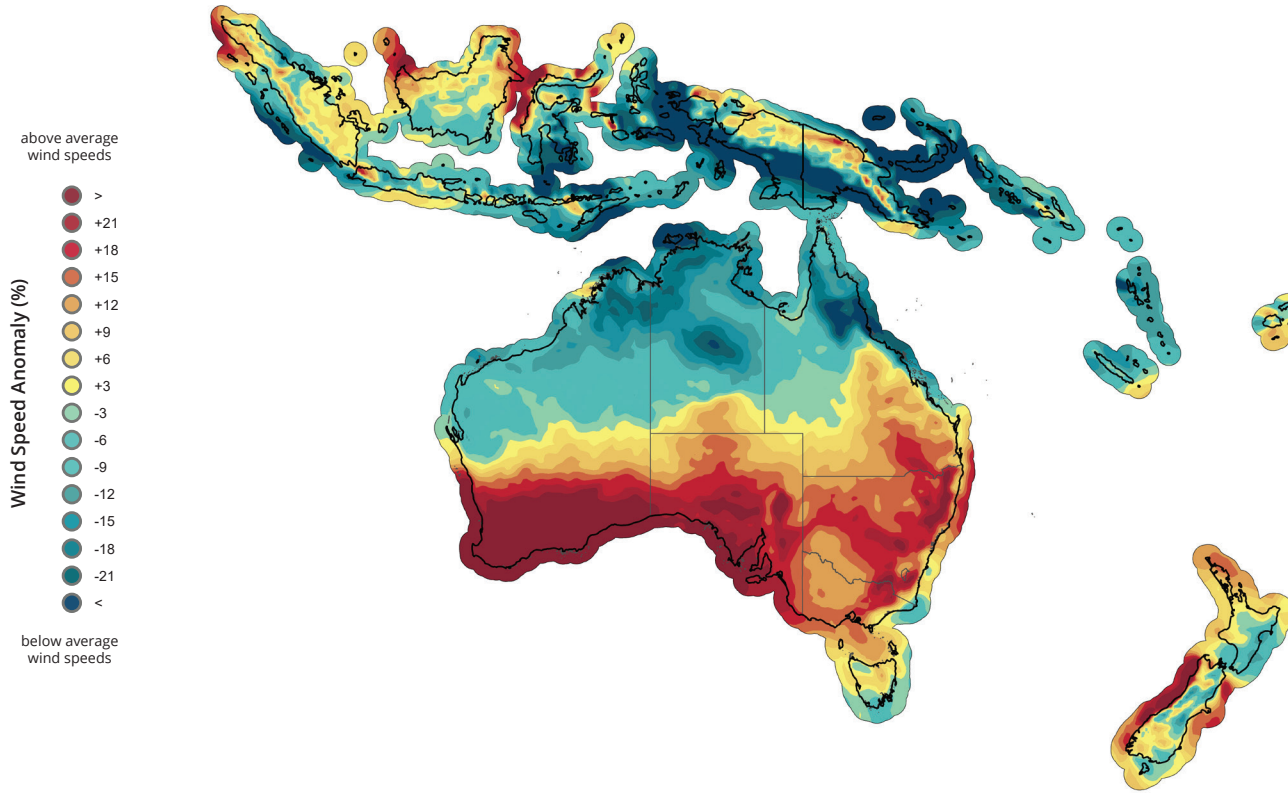


2021 | July

Oceania



Wind plant locations source:
Windpower Monthly Intelligence



above average
wind speeds



Wind Speed Anomaly (%)

below average
wind speeds



Wind Trends

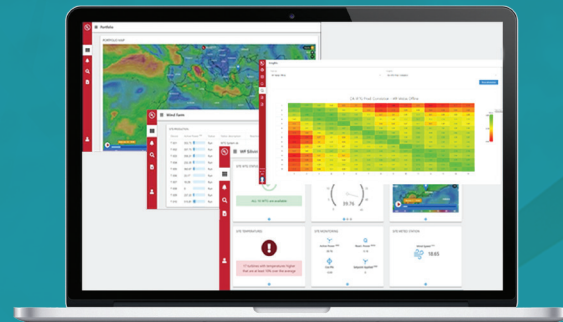
Global wind speed performance

+1 518 213 0044 | ul.com/renewables



Introducing real-time plant monitoring from UL

Transforming data into actionable intelligence



Renewable Asset Monitoring Platform

Manage your renewable assets with UL's connected SaaS platform that brings the power of real-time monitoring, production KPIs, analytics, power forecasting and reporting to renewable project owners around the globe. This platform is designed to provide customized solutions to owners, O&M directors, asset managers and technicians to manage their assets through monitoring, control, advanced analytics and insights. With cloud and mobile access, your team can perform operations monitoring from any office or field location.

For more information visit our [website](#).

Contact us at renewableenergyservices@ul.com.



Empowering Trust[®]

Locations	Jan	Feb	Mar	Q1	Apr	May	Jun	Q2	Jul	Aug	Sep	Q3	Oct	Nov	Dec	Q4	ANNUAL
North America	-4.9	-1.5	8.1	0.5	-3.4	-1	-4	-2.9	-6								
USA	-4.2	-1.3	7.6	0.7	-3.3	-1.5	-4.7	-3.2	-6.5								
Canada	-12.1	-2.6	14.2	-0.4	-6	-3.7	9.7	-0.5	-2.8								
Mexico	-3.7	-4.1	5.8	-0.7	0.2	9	-18.3	-2.3	-5.6								
South America	7.4	-5.4	-0.3	0.7	1.9	-1	-4.7	-1.7	-2.3								
Brazil	10.2	-5.8	1.2	2	3.5	-2.5	-5.9	-2.2	-3.2								
Argentina	1.1	-4.9	-3.1	-2.2	-4.7	0.6	-4.1	-2.8	3.9								
Chile	-0.1	-4.2	-2.8	-2.4	-0.8	-0.1	-5.1	-2.1	-8.8								
Europe	-1.7	1.3	-3.8	-1.5	-4.4	7.9	-10.7	-2.4	-2.9								
Germany	-8.9	-7.8	-4.7	-7.2	1.6	17.3	-19.7	0.1	-8.6								
Spain	11.7	8.2	-10.7	3.1	-15.1	1.5	-3.5	-6.2	3.7								
France	-2.0	5.3	-1.5	0.6	-2.5	21	16.4	1	6.2								
United Kingdom	-18.5	14.9	2	-0.7	-21	-8	-6	-12	-28.6								
Italy	19.9	-10.3	-10.9	-0.6	-4.3	13.2	-8.7	0.3	1.4								
Portugal	10.9	15.4	-9.6	5.4	-23	4.8	0	-6.6	6.7								
Denmark	-15.1	-3.1	-3.4	-7.4	4.5	-6.9	-13.7	-5.2	-4.3								
Ireland	-15.9	15.8	-0.1	-0.2	-15	-1.8	-4.6	-7.3	-25.7								
Africa / Middle East	3.8	0.5	1.8	2.1	-3.7	2.3	3.4	0.7	4.4								
South Africa	-0.1	1.6	-1.1	0.2	-9	4.4	2.3	-0.5	5.3								
Morocco	6.7	-4.6	-7.1	-1.8	-13.3	4.8	1.3	-2.6	9.3								
Egypt	3.1	11.7	11.8	9.1	9.6	7	7.5	8	4.5								
Asia	10.4	3.4	-3.8	2.9	-4.6	5	-1.8	-0.5	1.2								
China	12.0	4.2	-4.4	3.4	-4.4	6.6	-1	0.3	1.8								
India	-0.9	-3.9	0.7	-1.6	-7.7	-6.9	-8.2	-7.8	-2.6								
Thailand	10.4	5.2	-6.5	3.3	-12.5	-7.8	10.5	-1.8	2.5								
Ind, Aus, Oceania	3.6	-0.1	-2.5	0.4	-1.1	3.5	-1.2	0.4	11.3								
Australia	3.6	1	-1.9	0.9	-1.6	3.4	-0.8	0.4	12.7								
New Zealand	4.7	-18.3	-11.4	-8	1.7	3.6	-4.5	0.3	-3.7								
World	3.5	1.3	-0.8	1.1	-4	4.1	-4.6	-1.6	-1.5								

2021 | July

Wind index

The wind index represents the average wind speed anomaly across all plants across the country or region in production by the end of 2021. The anomalies are calculated as a percent deviation from the 1995 – 2019 mean speed at 100-m above ground level for the calendar period, and are weighted by the location and rated capacity of wind projects.

The wind project details have been obtained from [Windpower Monthly Intelligence](#).

[Download](#) index values for even more wind power producing countries!



Wind Trends
Global wind speed performance

+1 518 213 0044 | ul.com/renewables





UL and the UL logo are trademarks of UL LLC © 2021.