

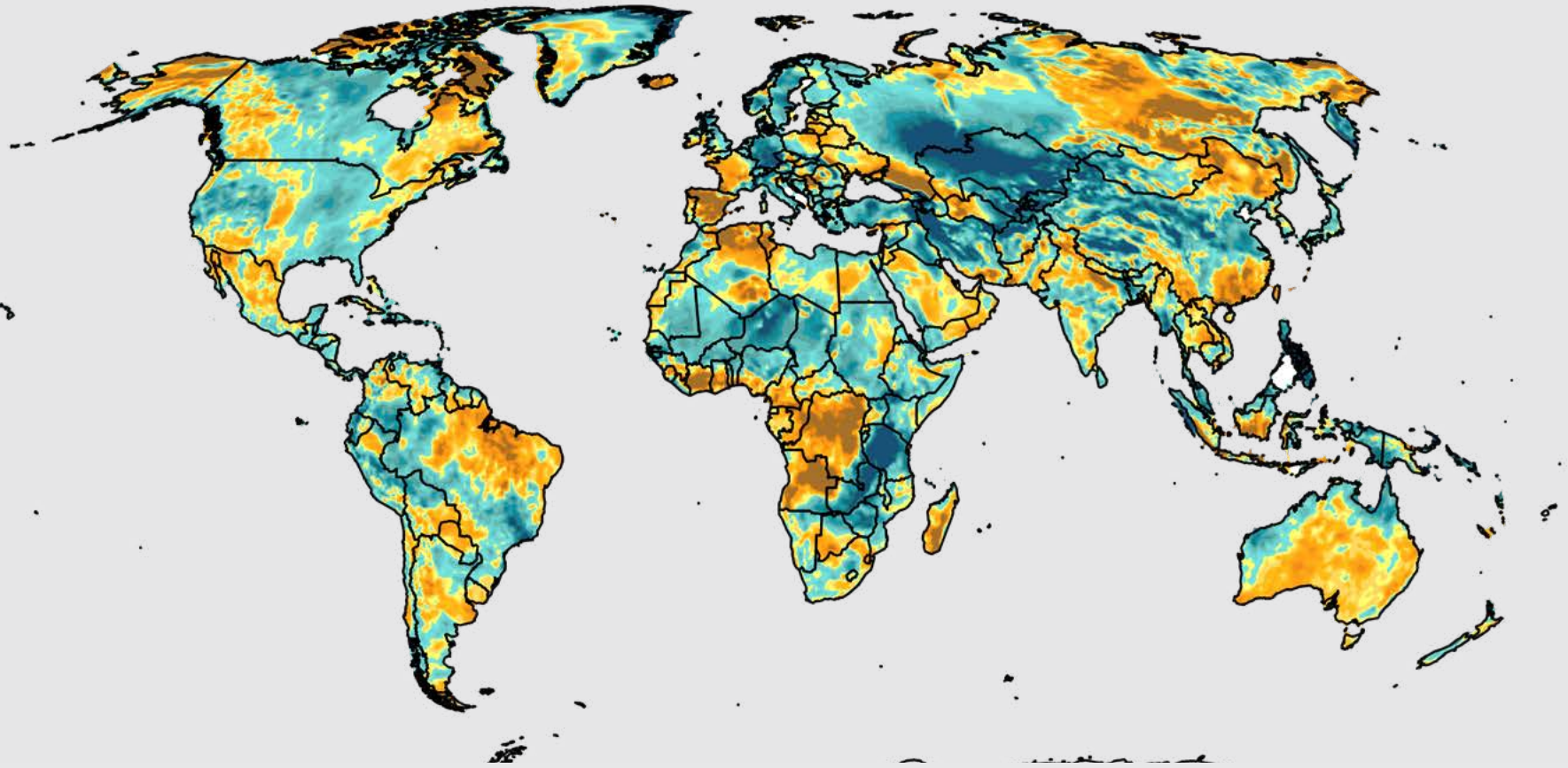
WIND TRENDS

GLOBAL WIND SPEED PERFORMANCE

Subscribe Now!

To receive our monthly, quarterly and annual Wind Trends Bulletins in your inbox, [click here](#).

Global
December 2020



The Wind Trends Bulletin is a report that evaluates deviations in global wind conditions from the historical norm on a monthly, quarterly, and annual basis. The maps contained in this report were derived from a custom combination of the CFSR, ERA-Interim, and MERRA reanalysis datasets. The anomalies are calculated as a percent deviation from the 1988 – 2014 mean speed at 100m above ground level for the calendar period. For more information about customized analyses for your project portfolio, data or subscription options, please contact us at renewableenergyservices@ul.com.



+1 518 213 0044 | ul.com/renewables

Introducing real-time plant monitoring from UL

Transforming data into actionable intelligence



Renewable Asset Monitoring Platform

Manage your renewable assets with UL's connected SaaS platform that brings the power of real-time monitoring, production KPIs, analytics, power forecasting and reporting to renewable project owners around the globe. This platform is designed to provide customized solutions to owners, O&M directors, asset managers and technicians to manage their assets through monitoring, control, advanced analytics and insights. With cloud and mobile access, your team can perform operations monitoring from any office or field location.

For more information, [click here](#).

Contact us at renewableenergyservices@ul.com.

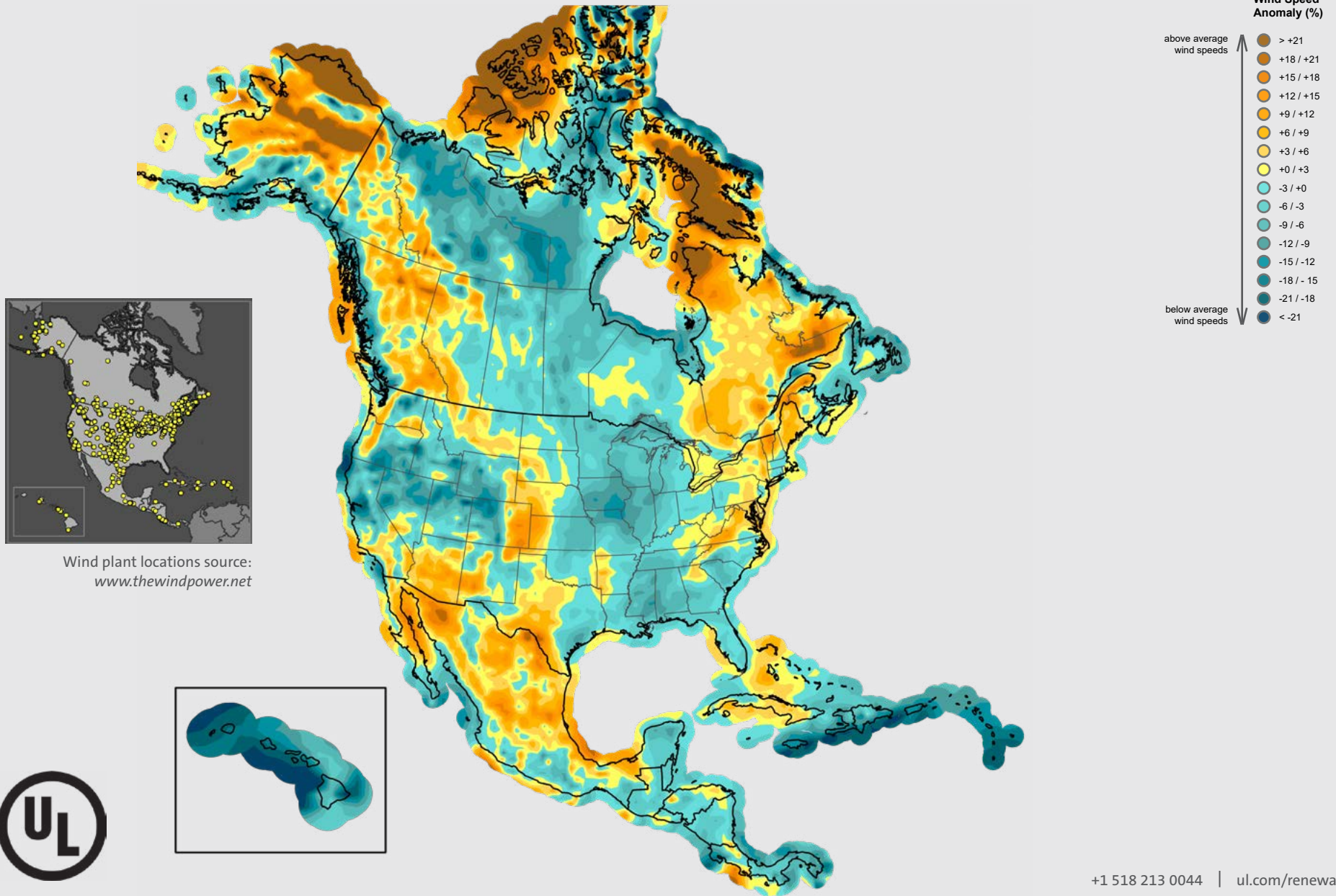
Empowering Trust[®]



WIND TRENDS

GLOBAL WIND SPEED PERFORMANCE

North America
December 2020



+1 518 213 0044 | ul.com/renewables

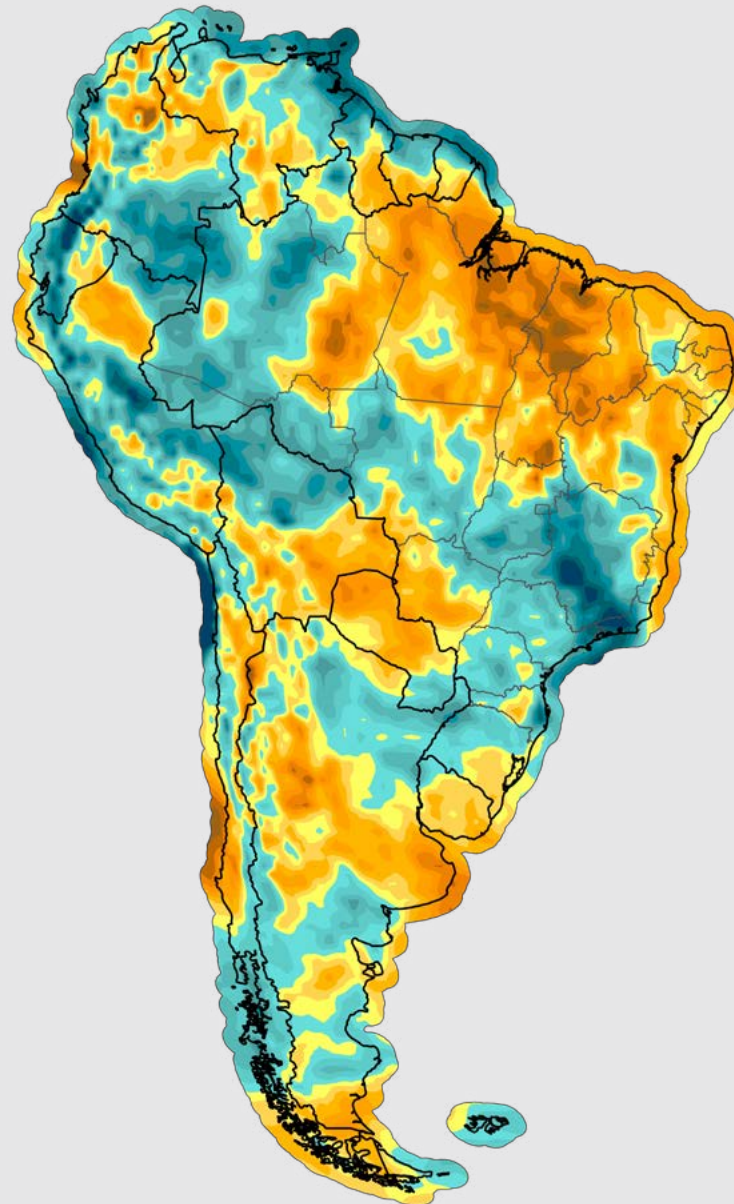
WIND TRENDS

GLOBAL WIND SPEED PERFORMANCE

South America
December 2020



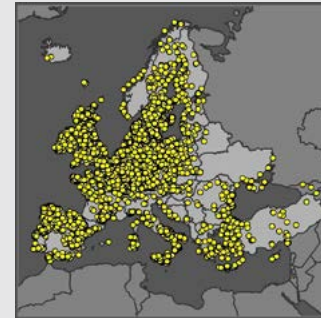
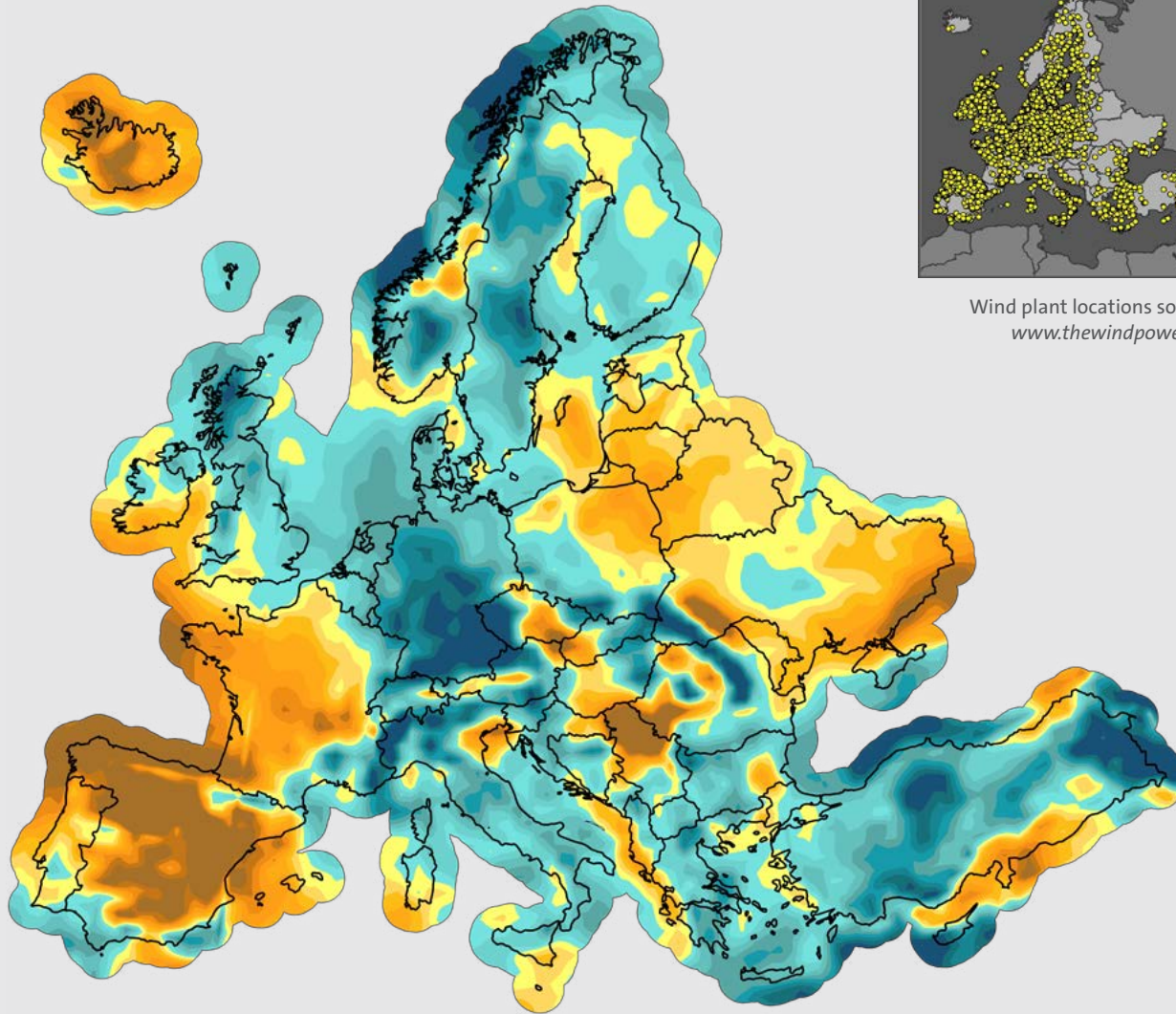
Wind plant locations source:
www.thewindpower.net



WIND TRENDS

GLOBAL WIND SPEED PERFORMANCE

Europe
December 2020



Wind plant locations source:
www.thewindpower.net

Wind Speed Anomaly (%)

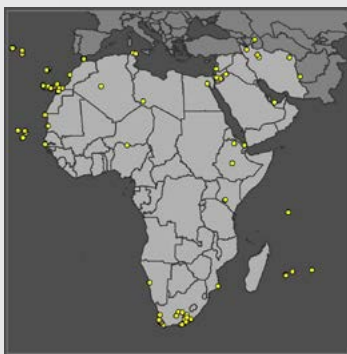
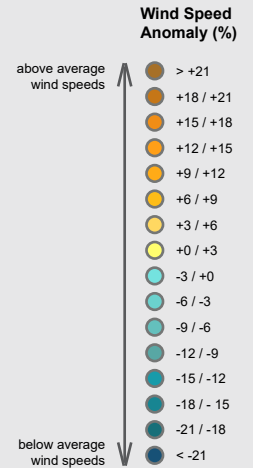
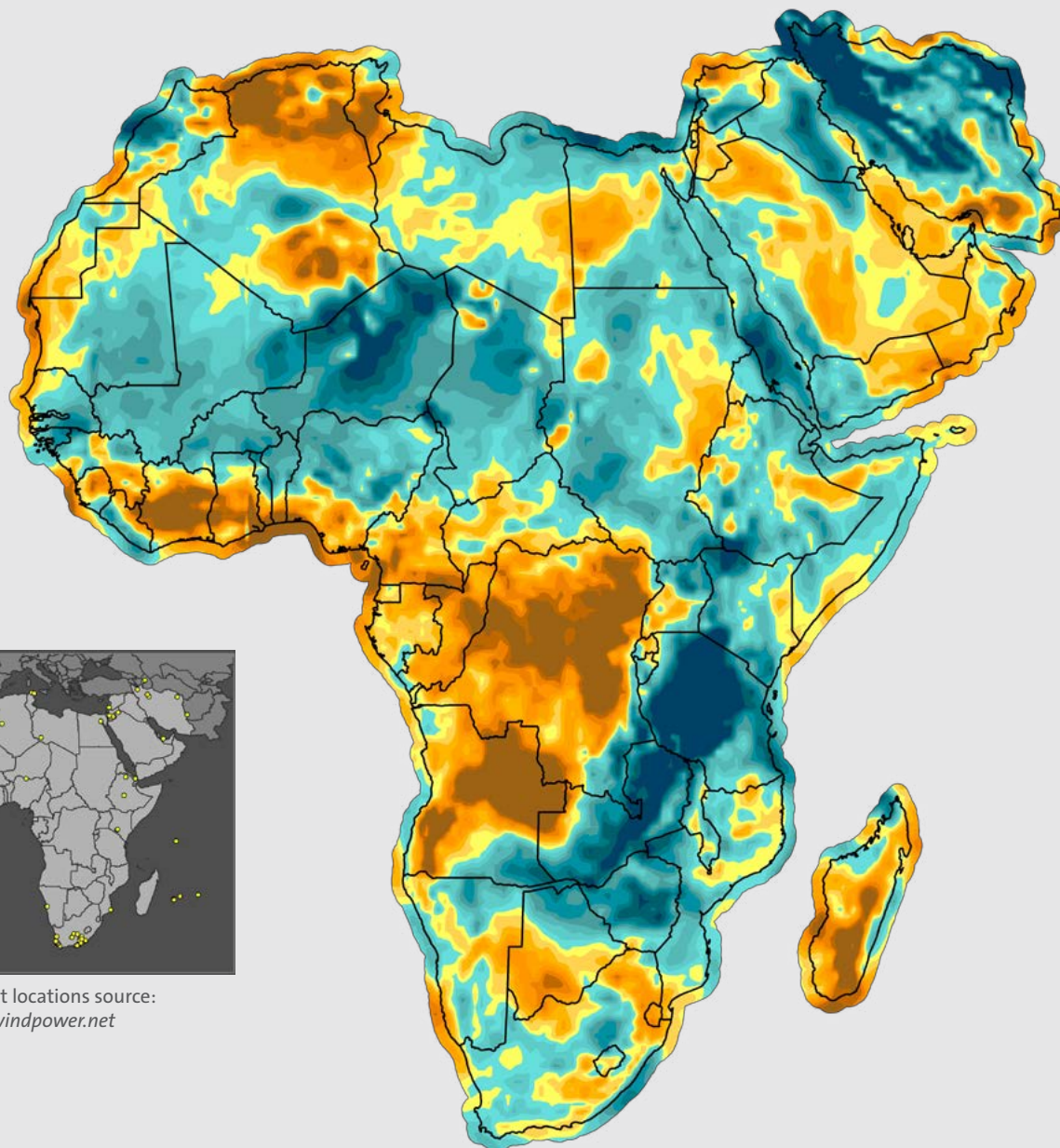


+1 518 213 0044 | ul.com/renewables

WIND TRENDS

GLOBAL WIND SPEED PERFORMANCE

Africa and the Middle East
December 2020



Wind plant locations source:
www.thewindpower.net

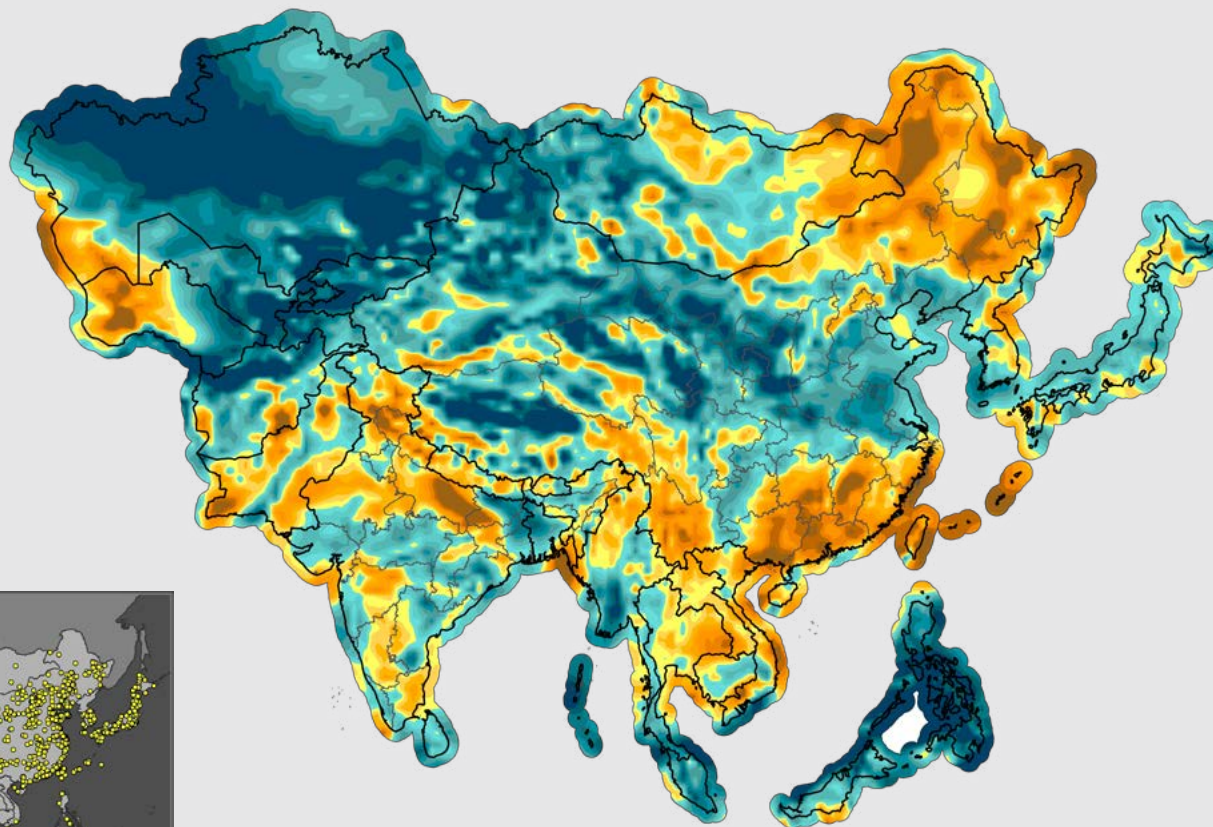


+1 518 213 0044 | ul.com/renewables

WIND TRENDS

GLOBAL WIND SPEED PERFORMANCE

Asia
December 2020



Wind plant locations source:
www.thewindpower.net



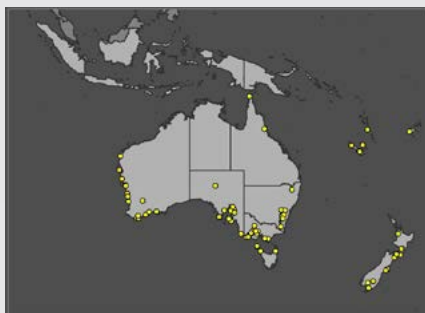
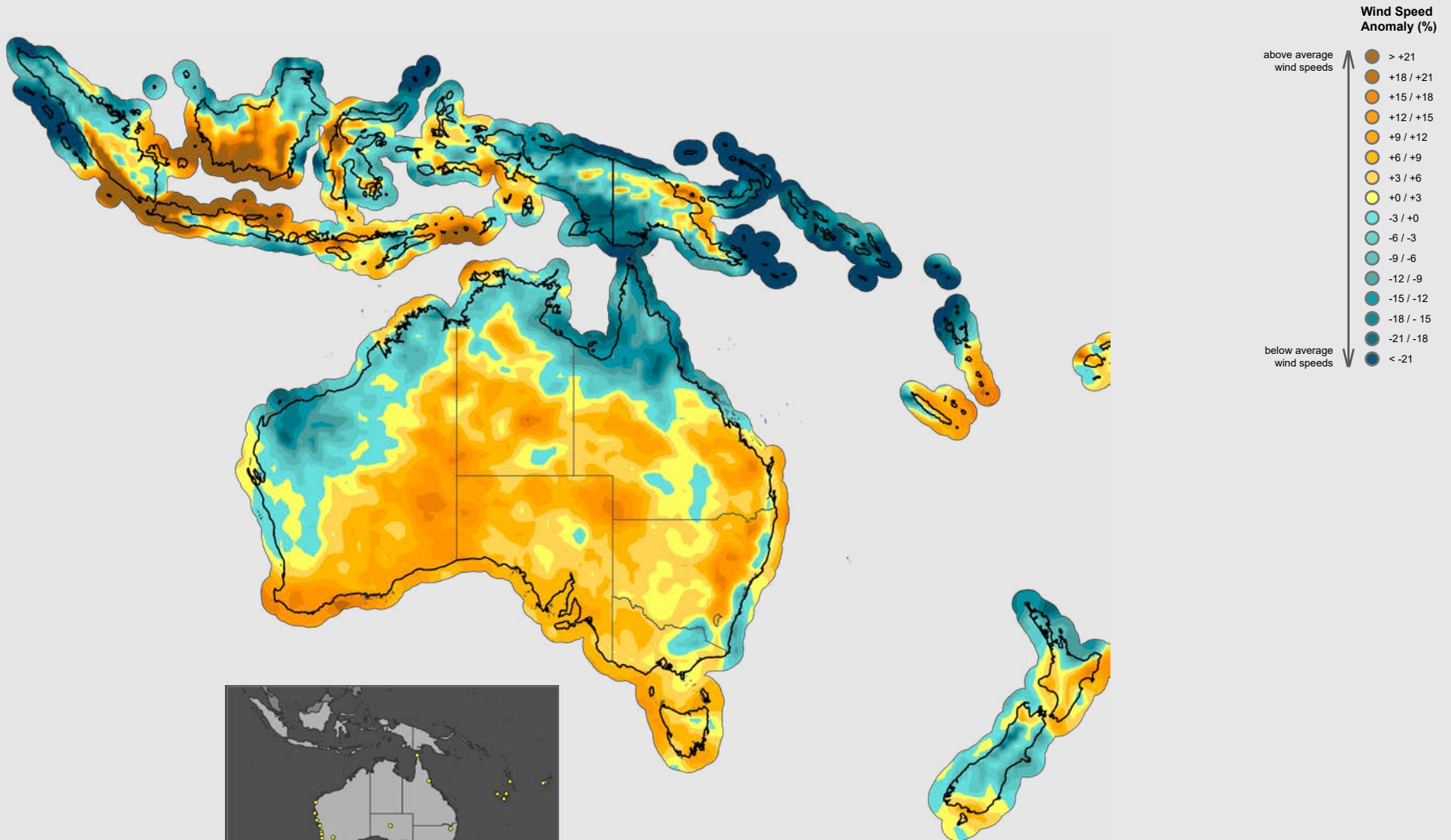
+1 518 213 0044 | ul.com/renewables

WIND TRENDS

GLOBAL WIND SPEED PERFORMANCE

Indonesia, Australia and Oceania

December 2020



Wind plant locations source:
www.thewindpower.net

+1 518 213 0044 | ul.com/renewables

WIND TRENDS

2020 Wind Index

This index represents the average wind anomaly (expressed as a percent deviation in mean speed from the 1988-2014 baseline for the corresponding calendar period) for each region and country shown, weighted by the location and megawatt capacity of wind projects in production by the end of 2019. The wind project locations and rated capacities are from The Wind Power database (TheWindPower.net). Note that not all operating projects are in the database, and coverage in certain countries such as China is weak. However, UL believes the findings are reasonably representative of wind conditions for the industry as a whole and for the key wind-producing countries.

[Click HERE](#) to download index values for even more wind producing countries!



Regions/Leading Wind Producing Countries	Jan	Feb	Mar	Q1	Apr	May	Jun	Q2	Jul	Aug	Sep	Q3	Oct	Nov	Dec	Q4	ANNUAL
North America	0.0	2.7	-1.3	0.2	-4.8	-1.0	7.3	0.2	-1.2	2.1	2.0	1.0	2.8	4.5	-1.0		
Canada	-9.5	6.3	4.1	-0.1	5.6	6.2	1.2	4.5	-4.4	6.7	7.7	3.5	-1.1	6.0	3.0		
USA	1.2	2.2	-1.9	0.2	-5.7	-2.0	8.2	-0.2	-0.3	1.7	1.8	1.1	3.3	4.4	-1.4		
Mexico	2.4	5.7	-5.9	0.6	-12.2	3.3	6.5	-2.0	-13.3	1.4	-2.0	-5	3.2	5.8	1.3		
South America	-8.8	-6.7	-12.9	-9.3	0.8	4.5	2.5	2.7	0.9	2.9	1.3	1.7	-1.1	-2.7	6.1		
Brazil	-10.8	-9.6	-15.9	-11.9	-0.5	3.2	1.8	1.7	1.6	2.4	2.7	2.3	-2.1	-2.8	7.3		
Argentina	5.1	1.4	-4.1	1.0	-3.8	2.5	3.1	0.7	-1.9	13.7	11.0	7.6	5.2	-1.9	2.0		
Europe	0.4	22.3	5.3	9.1	-5.6	0.0	-2.0	-2.7	-0.9	-2.9	-3.5	-2.5	5.8	-6.2	-1.5		
Denmark	8.2	25.8	0.0	11.4	2.8	6.6	-10.3	-0.2	17.3	-14.2	-8.4	-2.2	-0.6	2.4	-6.2		
France	0.4	36.6	11.5	15.7	-10.6	1.2	0.5	-3.2	-0.2	2.8	-2.7	-0.1	16.9	-7.6	5.0		
Germany	1.0	39.4	5.5	14.7	-3.0	-2.8	-4.6	-3.5	-5.2	-5.9	-15.2	-8.9	8.9	-5.5	-12.2		
Great Britain	5.0	35.9	5.2	15.2	-9.4	-1.6	5.2	-2.3	7.1	0.6	2.7	3.4	1.2	1.2	-7.0		
Ireland	-1.1	36.0	5.5	13.2	-18.9	1.7	7.2	-4.0	5.7	-4.4	-0.3	0.4	13.8	1.6	3.3		
Italy	-10.4	13.4	-7.8	-1.7	-11.6	12.7	11.8	3.6	-12.5	-0.6	2.4	-3.6	5.6	-24.8	-5.9		
Portugal	-1.5	-16.1	0.6	-5.3	-13.5	-10.2	1.3	-7.7	-5.2	0.5	0.6	-1.5	2.7	-4.5	8.8		
Spain	-7.8	-15.1	6.5	-5.5	-16.8	-4.6	-4.5	-9.1	-1.2	-2.9	2.9	-0.6	11.3	-15.4	21.3		
Africa / Middle East	-2.2	0.3	1.8	-0.1	-3.8	1.4	0.1	-0.7	5.3	6.7	1.4	4.5	2.4	-3	-1.5		
South Africa	2.4	2.8	4.2	3.2	1.7	2.3	3.2	2.6	9.3	6.3	1.0	5.6	-1.0	0.8	2.7		
Egypt	5.8	-12.5	-8.0	-5.2	4.7	7.1	-3.6	2.5	7.1	-0.8	4.3	3.6	3.4	-6.4	-6.2		
Asia	-11.9	-0.1	-0.3	-4.1	-5.5	0.4	-3.1	-2.8	-6.3	1.8	-4.6	-3.1	0.7	-3.3	-2.9		
China	-13.5	-1.2	0.4	-4.7	-6.0	3.2	-1.3	-1.4	-3.7	2.9	-3.4	-1.5	0.7	-4.4	-3.6		
India	-5.5	6.6	-3.4	-1.1	-7.9	-14	-13.8	-12	-20.3	-2.0	-14.3	-12.3	1.0	2.4	1.5		
Ind, Aus, Oceania	0.0	-0.3	2.2	0.6	11.4	10.4	-10.2	3.2	-16.4	0.1	7.5	-2.8	-5.1	0.3	6.1		
Australia	-0.1	-0.2	2.7	0.8	11.6	14.1	-11.5	4.0	-18.6	0.5	4.7	-4.3	-4.6	1.4	6.3		
World	-5.3	8.3	4.6	2.3	-2.2	-0.4	0.1	-1.1	-2.5	-2.4	-2.6	-2.5	1.8	-1.3	2.6		