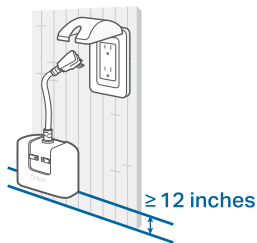
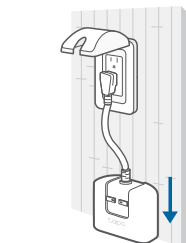


Waterproof Your Plug

tapo

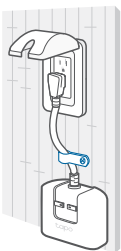


Keep the plug at least 12 inches (1ft) from the ground.

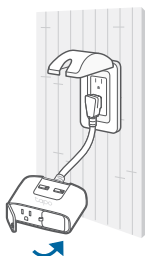


Keep the plug face down. Otherwise, water may get into the plug.

Tips



Secure the plug with the provided clamp and screw.



Keep the plug covered with the weatherproof cover when not in use.

Quick Start Guide

Tapo Smart Wi-Fi Outdoor Plug

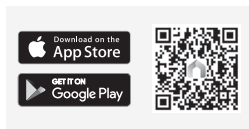
Images may differ from actual product.

©2023 TP-Link 7106510092 REV1.1.0

Get Started with the Tapo App

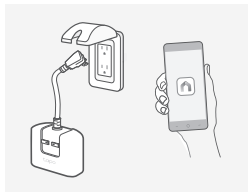
1. Download Tapo App

Get the **Tapo** app from the App Store or Google Play.



2. Power Up & Set Up

Power up your plug and open the Tapo app. Tap the ⊕ button and follow the app instructions to complete setup.



Note: Unused plugs should be firmly capped with the included weather-resistant cover.

Warning

Mount vertically with the receptacles facing downward, at least 1 ft above the ground. For outdoor usage, use this product with GFCI outlet.

MISE EN GARDE

Montez verticalement avec les prises orientées vers le bas et à au moins 1 pieds au-dessus du sol. Pour une utilisation en extérieur, utilisez ce produit avec une prise GFCI.

Set Up with Matter

This is a Matter-certified device. You can integrate it into any Matter ecosystem you prefer for easy control.

How to Set Up

A Matter-supported controller and smart home app of the same ecosystem are required.

1. Turn on Bluetooth on your phone.
2. Open your selected smart home app and scan the provided Matter QR code on your device.
3. Follow the instructions in the app to complete setup.

Note: Setup processes may vary between ecosystems.

Failed to Set Up?

1. Try to connect your phone to a stable **2.4 GHz** Wi-Fi network with internet access instead of a **5 GHz** network.
2. Unplug your device and plug it back in to restart.
3. Refer to the FAQ for detailed instructions:
<https://www.tp-link.com/support/faq/3520/>



For technical support, user guides, and other information, visit <https://www.tapo.com/support>