



User Guide

Smart Remote Dimmer Switch

Contents

About This Guide	1
Introduction	2
Tapo Smart Ecosystem	3
Automate Your Home	4
Set Up Your Smart Switch	5
Use Your Smart Switch	9
Explore Smart Actions	11
How to Create Smart Actions	12
How to Replace the Battery	14
How to Reset Your Smart Switch	15
Authentication	16

About This Guide

This guide provides a brief introduction to the Smart Switch and the Tapo app, as well as regulatory information.

Please note that features available in Tapo may vary by model and software version. Tapo availability may also vary by region. All images, steps, and descriptions in this guide are only examples and may not reflect your actual Tapo experience.

Conventions

In this guide, the following convention is used:

Convention	Description
Blue	Key information appears in blue, including management page text such as menus, items, buttons and so on.
<u>Underline</u>	Hyperlinks are in blue and underlined. You can click to redirect to a website.
📌Note:	Ignoring this type of note might result in a malfunction or damage to the device.

More Info

- Specifications can be found on the product page at <https://www.tapo.com>.
- Our Technical Support and troubleshooting information can be found at <https://www.tapo.com/support/>.
- The setup videos can be found at <https://www.tp-link.com/support/setup-video/#home-smart-switches>.

Introduction

Control your smart light from multiple locations with more than one dimmer switch. This way, your single-pole dimmer turns into a 3-way or even 4-way dimmer without rewiring. Ideal for living rooms, halls, and stairways.

- Smart Actions – Control and set multiple smart lights, electronics, and other Tapo smart devices.
- Local Instant Control – Get instant, app-free control over your smart devices with the smart remote dimmer switch.
- Control From Multiple Locations – Control your smart lights from multiple locations with more than one dimmer switch.
- Customized Actions – Single tap, double tap, and rotating options enable you to trigger multiple smart actions.
- Flexible Mounting – Place the smart remote dimmer switch wherever you want, and your lighting control are always within reach.
- Long Battery Life – The battery will last more than one year.



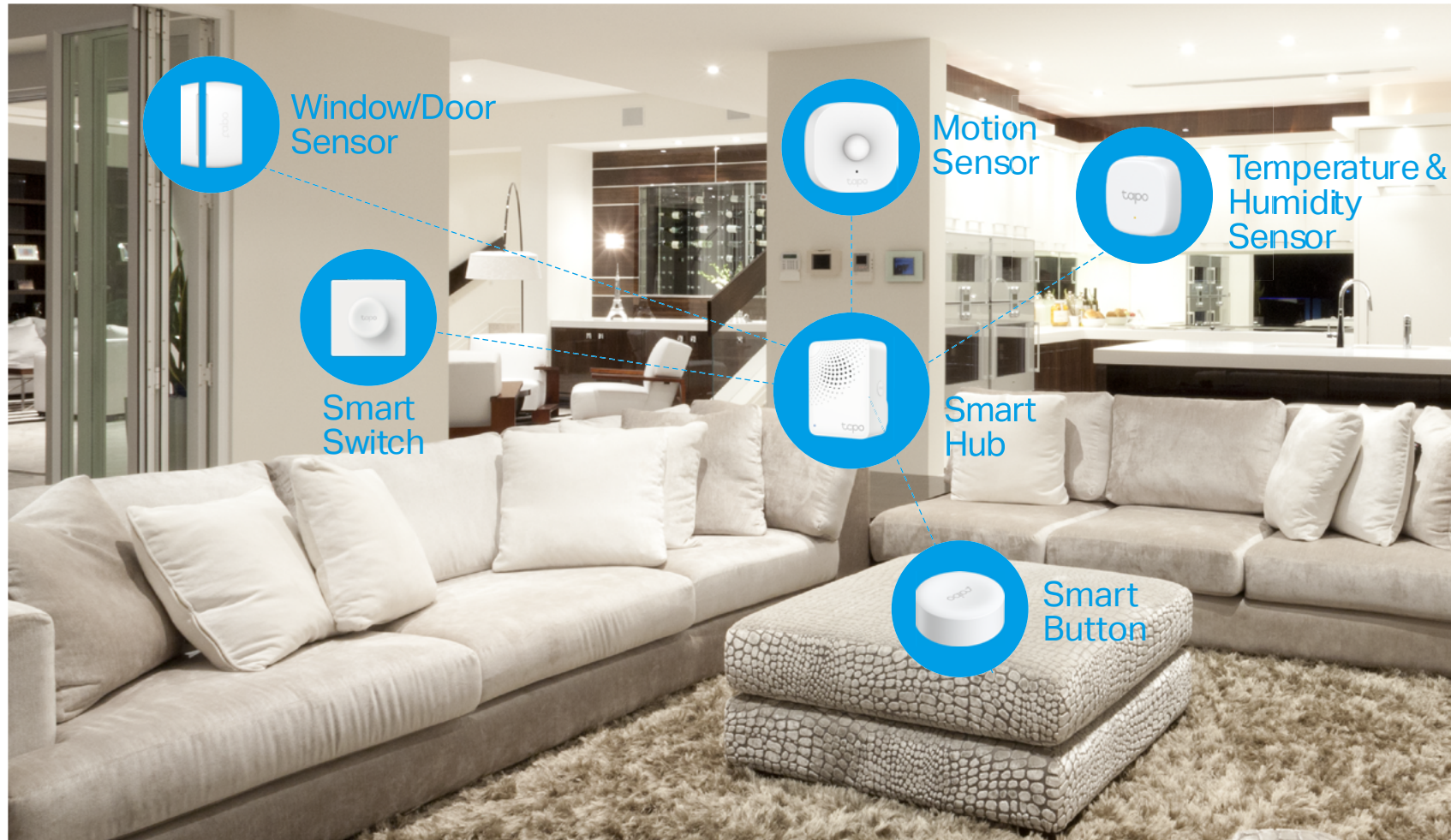
86 Type



128 Type

Tapo Smart Ecosystem

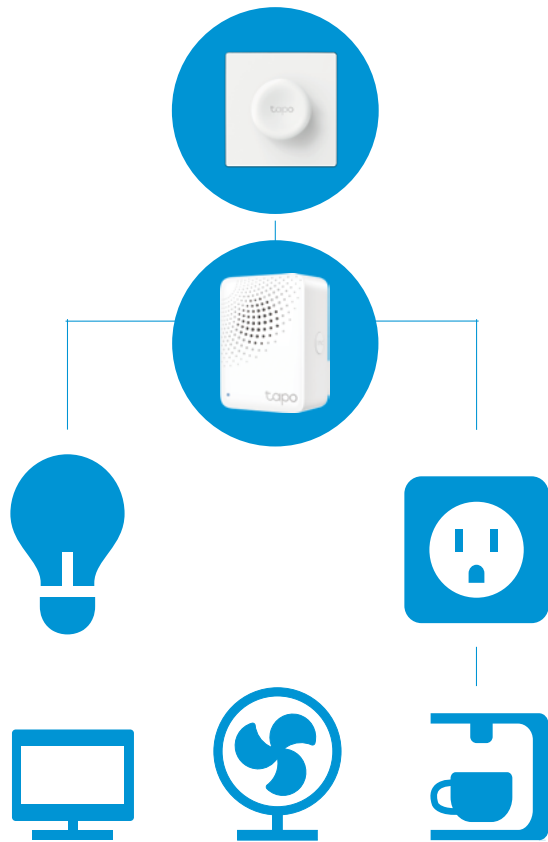
Tapo is the easy way to turn your home into a smart home. With the Tapo Hub as a bridge, Tapo Smart Switch works with a wide range of Tapo accessories. So you can easily control and monitor your home from anywhere.



Automate Your Home

Create a Smart Action to automate your smart devices. Customize your own Smart Actions to group your Tapo products together any way you want.

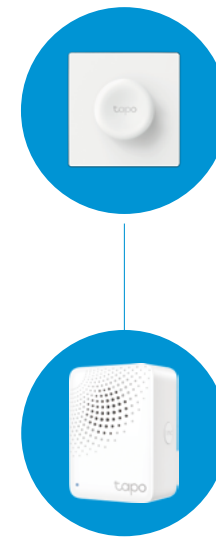
Turn On/Off Devices



Customize Tapo Lighting



Build Smart Doorbell



Set Up Your Smart Switch

▶ Watch setup videos at <https://www.tp-link.com/support/download/tapo-s200d/>

Before You Start

A Tapo Hub is required. Make sure your Tapo Hub is successfully added via the Tapo app.

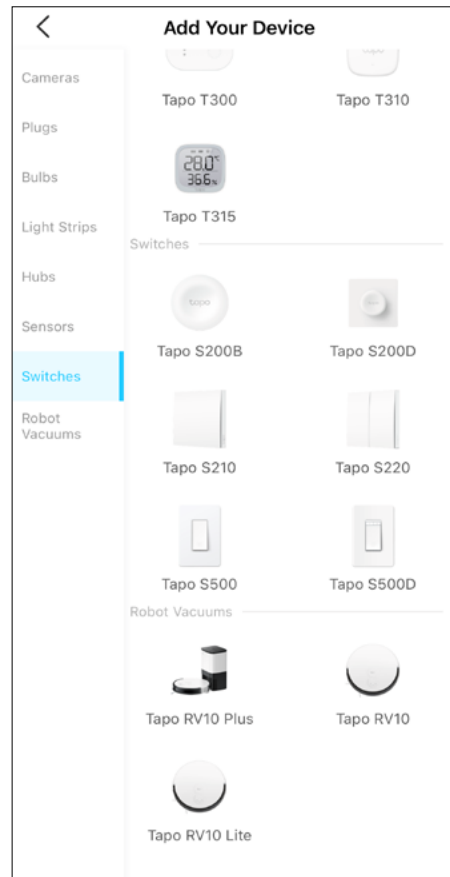


OR



1. Set Up Your Switch

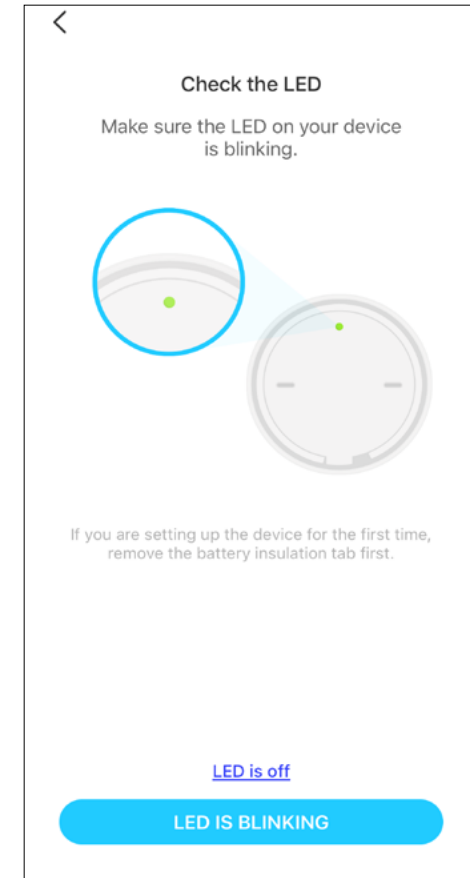
Tap the ⊕ button in the Tapo app, tap [Switches](#), and select your model. Follow the instructions in the Tapo app to complete the setup.



2. Check the LED & Set Up

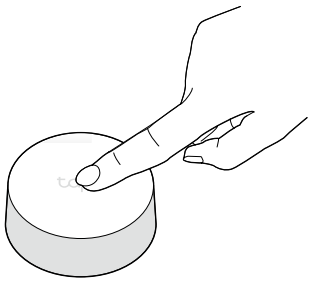
Check if the LED blinks. Follow app instructions to complete the setup.

▶ **Note:** If LED is not blinking, refer to [How to Reset Your Smart Switch](#) for instructions.



3. Test Your Switch

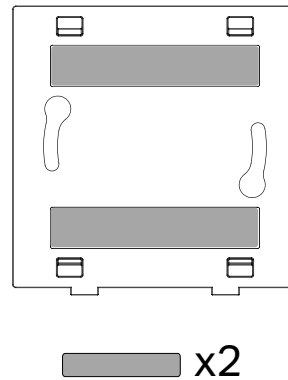
- Press the button to test it in your preferred location.
- Refresh the home page on the Tapo app to confirm its status.



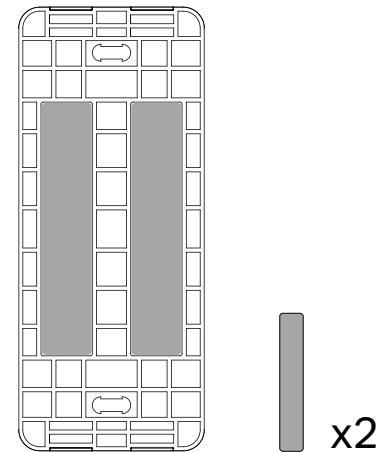
4. Secure Your Wallplate (Optional)

Option 1: Use Adhesives Provided

Stick the included adhesives to the back panel and stick the wallplate to your preferred location.

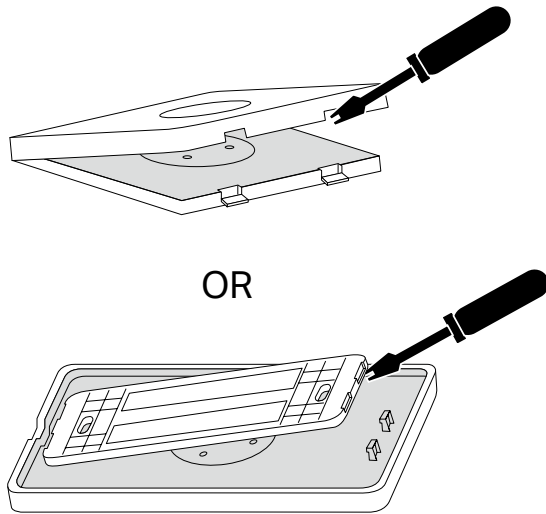


OR

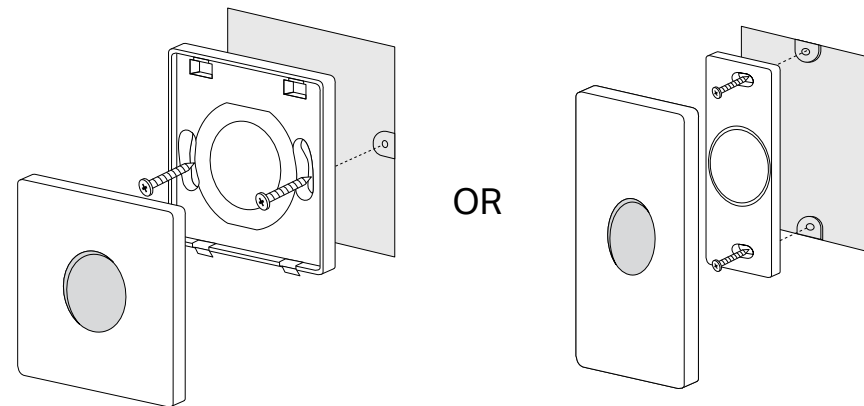


Option 2: Use Screws (Replace Current Wallplate)

a. Stick the included adhesives to the back panel and stick the wallplate to your preferred location.

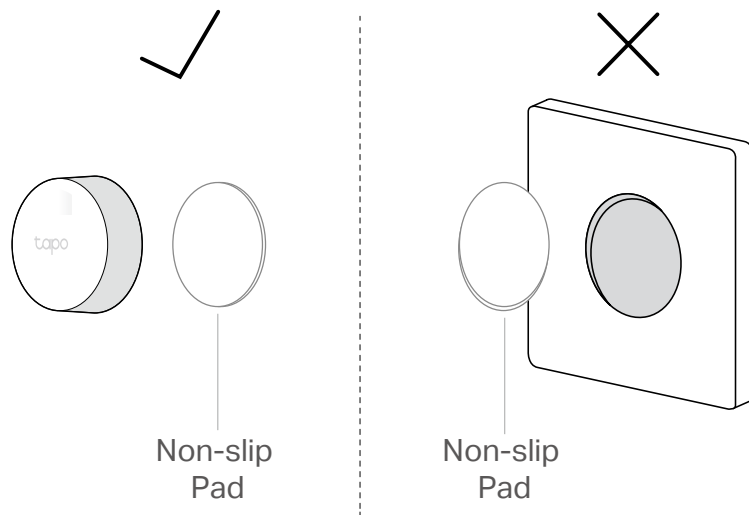


b. Secure the back panel with screws and attach the wallplate to the back panel.

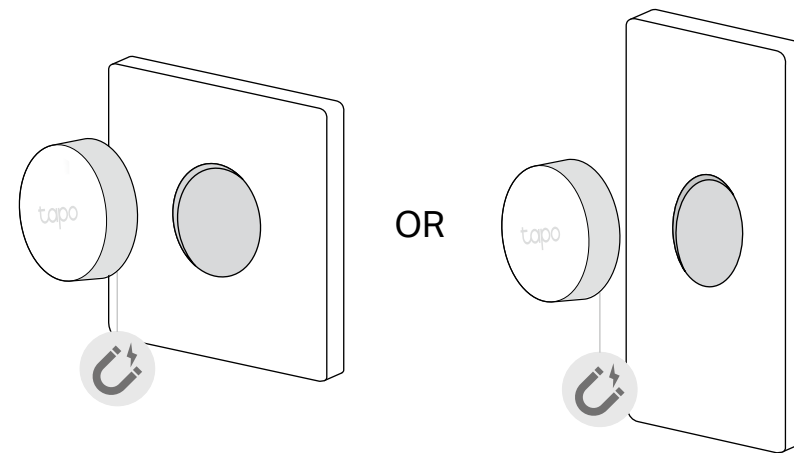


5. Magnetically Attach Button to the Wallplate

a. Attach the non-slip pad to the button (not the wallplate) to keep the button firmly in place.



b. Magnetically attach the button to the wallplate.

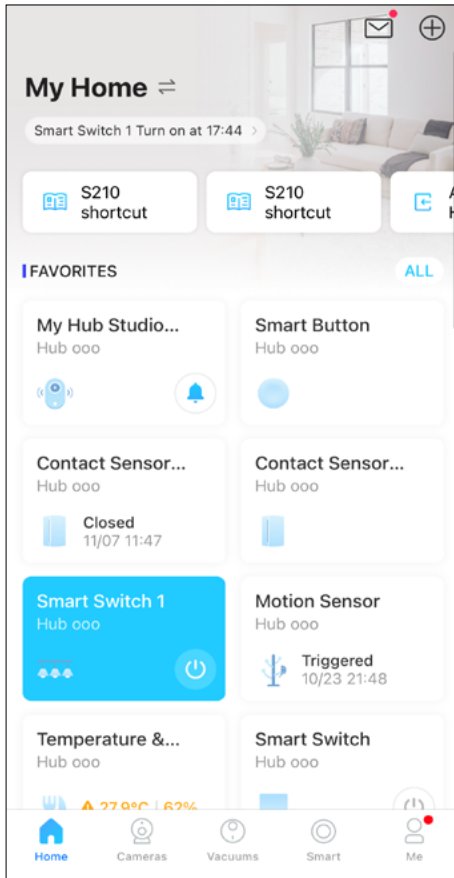


Use Your Smart Switch


After you successfully set up your hub and smart switch, you will see your devices listed on the home page. With the Tapo app, you can view and manage your devices anytime, anywhere.

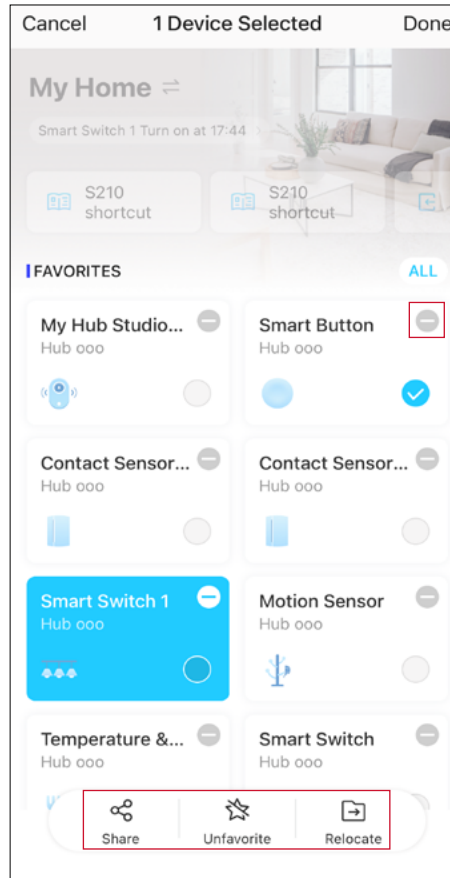
Home Page

This page lists all the devices you've added and you can view them directly and manage them easily. Tap the card to enter its [Status](#) page.



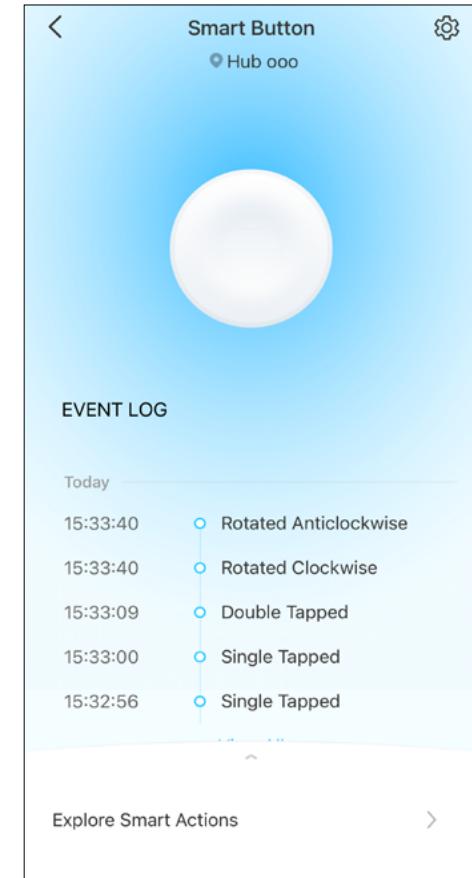
Home Page Settings

Long press on a card, then you can reorder cards, tap  to remove your device from your account, share your device, favorite/unfavorite device, or relocate your device to other Home.



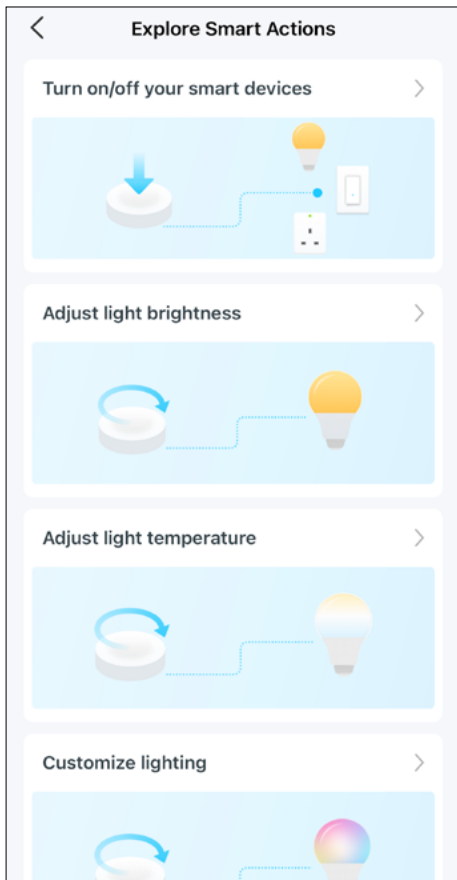
Status Page

You can check all events of you device. Slide the panel up to check more settings or tap the gear icon to enter the [Settings](#) page.



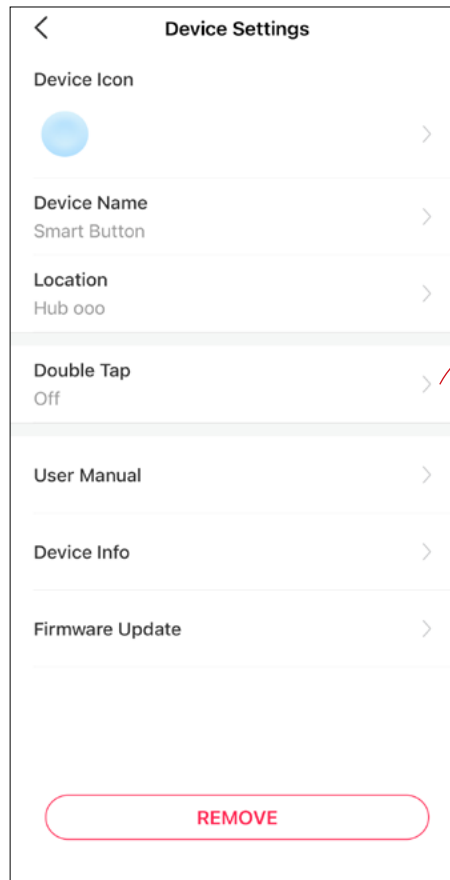
Featured Smart Actions

The smart switch can work with other Tapo devices to automate your home. You can customize smart actions based on the templates.



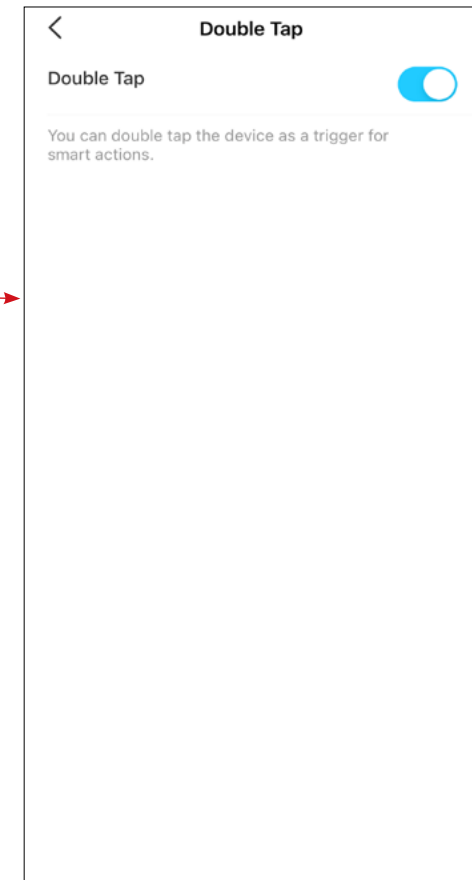
Device Settings

Check/edit the basic info, view User Manual and Placement Guide, or remove your device from your account.



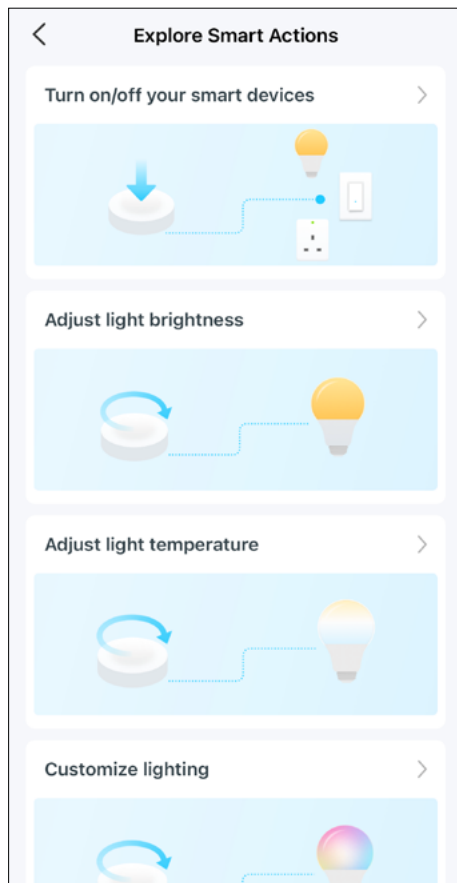
Double Tap Settings

Turn on Double Tap if you want to use "Double Tap" as a trigger for the smart action.



Explore Smart Actions

The smart switch can work with other Tapo devices to automate your home. You can customize smart actions based on the templates. This makes your home safer and smarter.



Smart Actions	What can this Smart Action do?	Tapo Device Requirement
Turn on/off your smart devices	Turn on/off the devices with one tap on your button	Hub + Bulb/Light Strip/Plug/Switch
Adjust light brightness	Rotate the button to adjust the brightness of the selected devices.	Hub + Bulb/Light Strip
Adjust light temperature	Rotate the button to change the feeling and ambiance of the room on the selected devices.	Hub with alarm feature
Customize lighting	Rotate the button to adjust color and brightness for your mood with the selected devices. *Only color light is supported.	Hub + Bulb/Light Strip
Build smart doorbell	When the button is pressed, the selected hubs will ring.	Hub with alarm feature

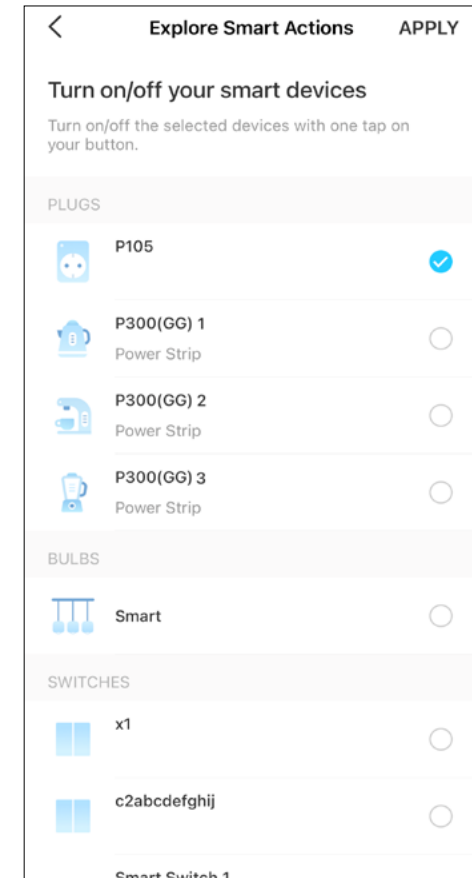
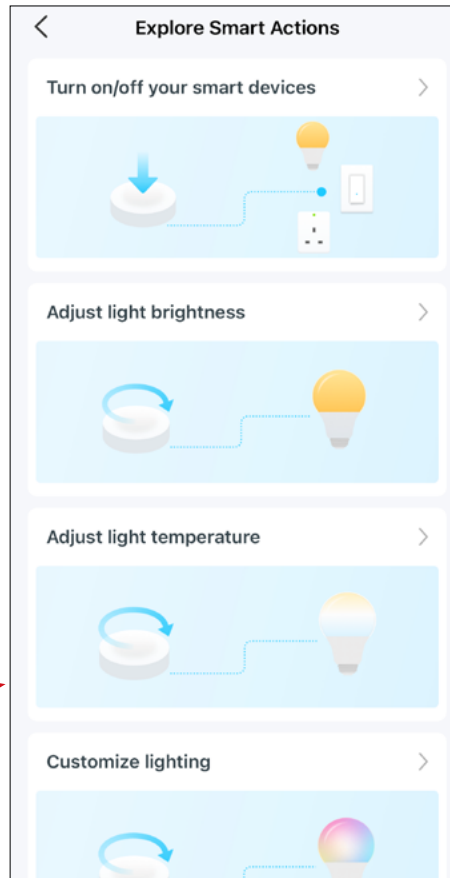
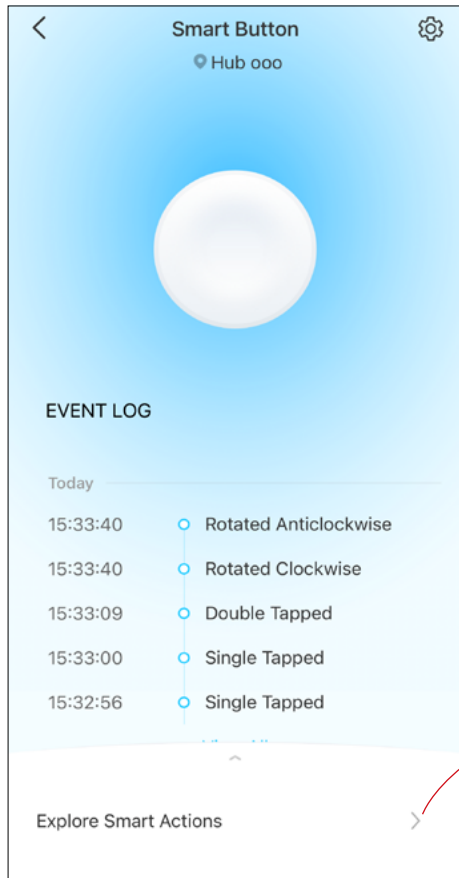
How to Create Smart Actions

Choose a Smart Action template, choose devices, and customize the settings as needed.

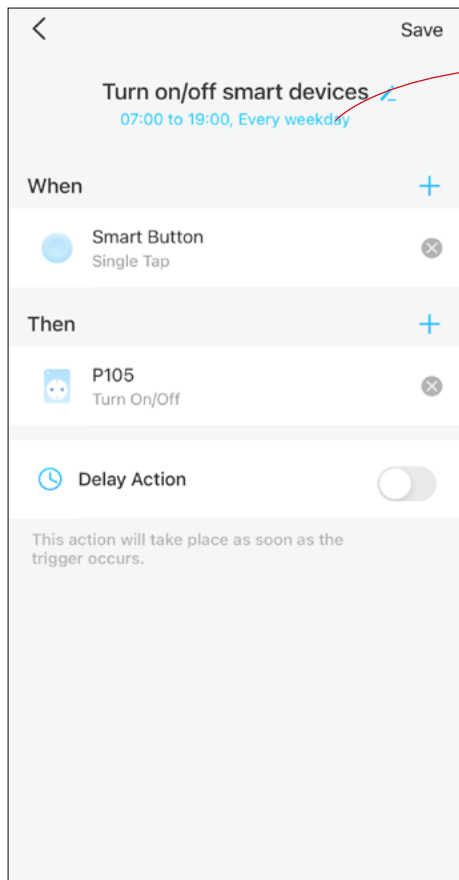
1. On the [Status](#) page, tap [Explore Smart Actions](#).

2. Choose a template and customize the smart action based on the template.

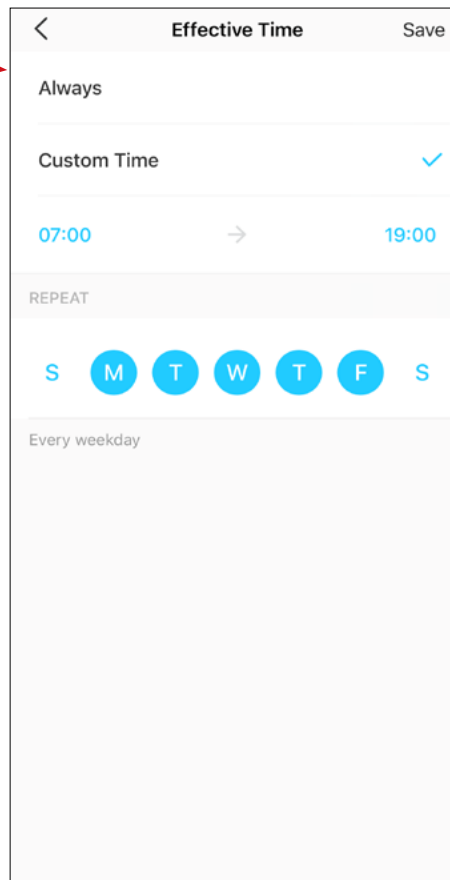
3. Select devices you want to take action when you tap or rotate the button.



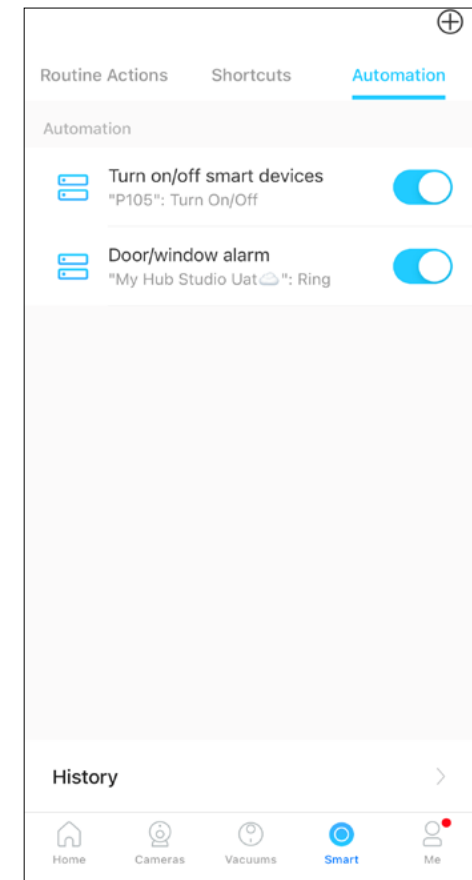
4. Customize the settings as needed. Turn on [Delay Action](#) if you want the action to take place some time after the button is tapped or rotated.



5. Set the effective time for this smart action.



Done! You can go to [Smart](#) (Smart Actions) > [Automation](#) to check the item. Toggle on/off to enable/disable the action, tap to edit, and swipe right to delete.



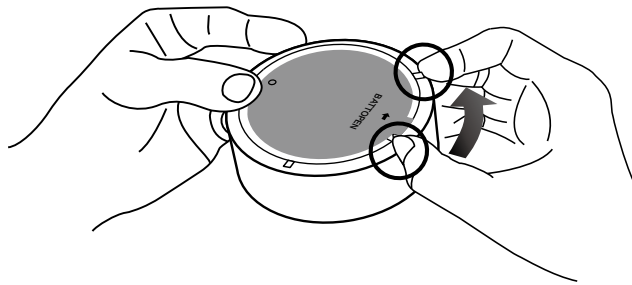
How to Replace the Battery

▶ Watch videos at <https://www.tp-link.com/support/download/tapo-s200d/>

1. Hold the main body to prevent free rotation. Then twist the lid anticlockwise and remove the lid.

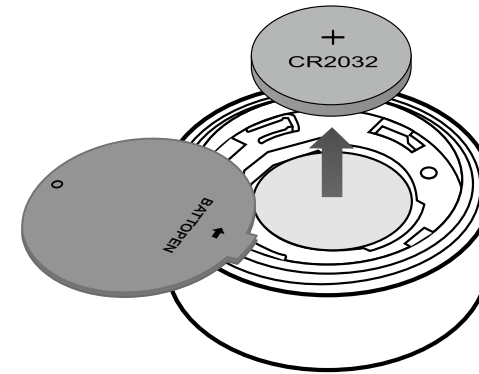
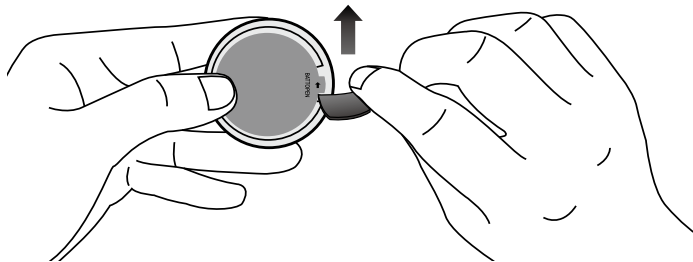
2. Replace the battery into the battery compartment, making sure the battery is level and its positive side is facing up. Put the cover back on the device.

Option 1: By Hand



OR

Option 2: With a Shim

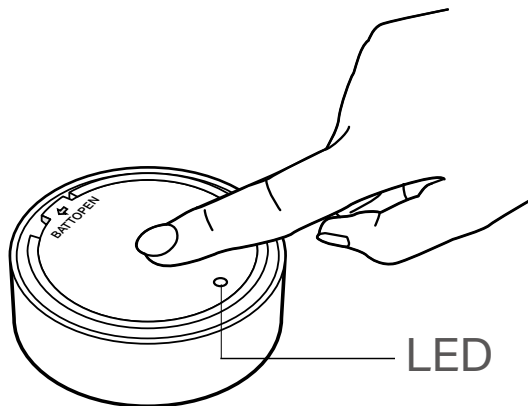


How to Reset Your Smart Switch


▶ Watch videos at <https://www.tp-link.com/support/download/tapo-s200d/>

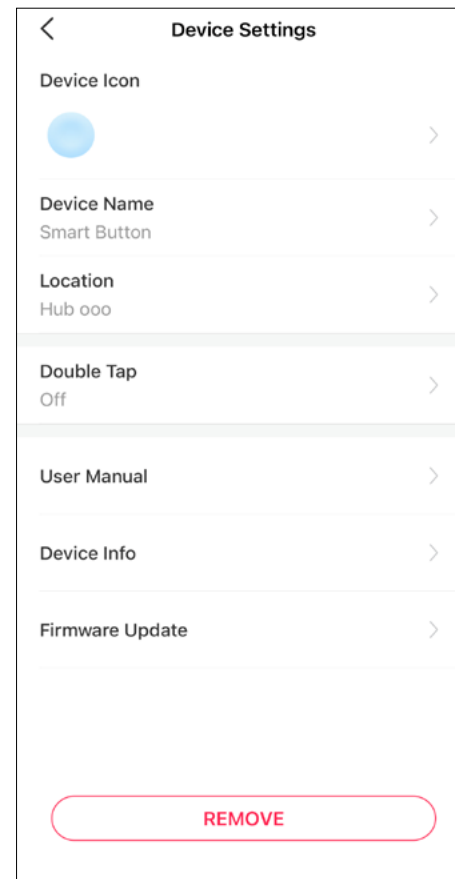
Option 1. Via the Button

- Press and hold the button for 5 seconds. The LED will become yellow-green for 10 seconds.
- Quickly press the button 3 times while the LED is yellow-green.
- The LED should start blinking.

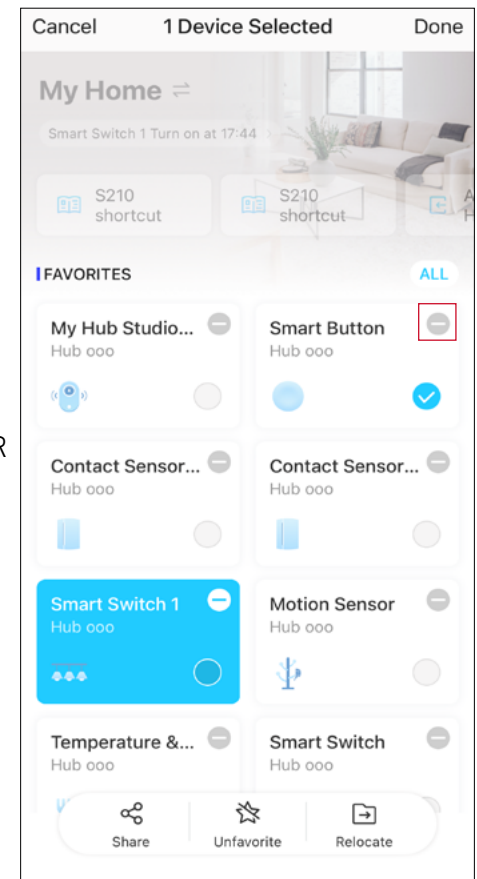


Option 2. Via the Tapo App

Long press the card on the home page and tap  or go to the [Device Settings](#) page and tap the [Remove](#) button to remove your device from your account.



OR



Authentication

FCC Compliance Information Statement



Product Name: Tapo Smart Remote Dimmer Switch

Model Number: Tapo S200D

Responsible party:

TP-Link USA Corporation

Address: 10 Mauchly, Irvine, CA 92618

Website: <http://www.tp-link.com/us/>

Tel: +1 626 333 0234

Fax: +1 909 527 6804

E-mail: sales.usa@tp-link.com

This equipment has been tested and found to comply with the limits for a Class B digital device, pursuant to part 15 of the FCC Rules. These limits are designed to provide reasonable protection against harmful interference in a residential installation. This equipment generates, uses and can radiate radio frequency energy and, if not installed and used in accordance with the instructions, may cause harmful interference to radio communications. However, there is no guarantee that interference will not occur in a particular installation. If this equipment does cause harmful interference to radio or television reception, which can be determined by turning the equipment off and on, the user is encouraged to try to correct the interference by one or more of the following measures:

- Reorient or relocate the receiving antenna.
- Increase the separation between the equipment and receiver.
- Connect the equipment into an outlet on a circuit different from that to which the receiver is connected.
- Consult the dealer or an experienced radio/ TV technician for help.

This device complies with part 15 of the FCC Rules. Operation is subject to the following two conditions:

1. This device may not cause harmful interference.
2. This device must accept any interference received, including interference that may cause undesired operation.

Any changes or modifications not expressly approved by the party responsible for compliance could void the user's authority to operate the equipment.

Note: The manufacturer is not responsible for any radio or TV interference caused by unauthorized modifications to this equipment. Such modifications could void the user's authority to operate the equipment.

FCC RF Radiation Exposure Statement

This equipment complies with FCC RF radiation exposure limits set forth for an uncontrolled environment. This device and its antenna must not be co-located or operating in conjunction with any other antenna or transmitter.

"To comply with FCC RF exposure compliance requirements, this grant is applicable to only Mobile Configurations. The antennas used for this transmitter must be installed to provide a separation distance of at least 20 cm from all persons and must not be co-located or operating in conjunction with any other antenna or transmitter."

We, **TP-Link USA Corporation**, has determined that the equipment shown as above has been shown to comply with the applicable technical standards, FCC part 15. There is no unauthorized change is made in the equipment and the equipment is properly maintained and operated.

Issue Date: 2023.05.19

CE Mark Warning



This is a class B product. In a domestic environment, this product may cause radio interference, in which case the user may be required to take adequate measures.

Operating Frequency / Nominal Operating Frequency / Max Output Power:

863~865MHz / 863.35MHz / 25mW (e.r.p)

863~865MHz / 864.35MHz / 25mW (e.r.p)

868~868.6MHz / 868.35MHz / 25mW (e.r.p)

EU declaration of conformity

TP-Link hereby declares that the device is in compliance with the essential requirements and other relevant provisions of directives 2014/53/EU, 2009/125/EC, 2011 /65/EU and (EU) 2015/863.

The original EU declaration of conformity may be found at <https://www.tapo.com/en/support/ce/>

RF Exposure Information

This device meets the EU requirements (2014/53/EU Article 3.1a) on the limitation of exposure of the general public to electromagnetic fields by way of health protection.

The device complies with RF specifications when the device used at 20 cm from your body.

Restricted to indoor use.

UKCA Mark



UK Declaration of Conformity

TP-Link hereby declares that the device is in compliance with the essential requirements and other relevant provisions of the Radio Equipment Regulations 2017.

The original UK declaration of conformity may be found at <https://www.tapo.com/support/ukca/>

Korea Warning Statements:

당해 무선설비는 운용중 전파혼신 가능성이 있음.

NCC Notice

注意!

取得審驗證明之低功率射頻器材，非經核准，公司、商號或使用者均不得擅自變更頻率、加大功率或變更原設計之特性及功能。

低功率射頻器材之使用不得影響飛航安全及干擾合法通信；經發現有干擾現象時，應立即停用，並改善至無干擾時方得繼續使用。

前述合法通信，指依電信管理法規定作業之無線電通信。

低功率射頻器材須忍受合法通信或工業、科學及醫療用電波輻射性電機設備之干擾。



Продукт сертифіковано згідно с правилами системи УкрСЕПРО на відповідність вимогам нормативних документів та вимогам, що передбачені чинними законодавчими актами України.



Safety Information

- Keep the device away from water, fire, humidity or hot environments.
- Do not attempt to disassemble, repair, or modify the device. If you need service, please contact us.
- Do not use the device where wireless devices are not allowed.
- Please read and follow the above safety information when operating the device. We cannot guarantee that no accidents or damage will occur due to improper use of the device. Please use this product with care and operate at your own risk.
- Do not ingest battery, Chemical Burn Hazard

CAUTION!

Risk of explosion if the battery is replaced by an incorrect type

CAUTION!

Avoid replacement of a battery with an incorrect type that can defeat a safeguard.

Avoid disposal of a battery into fire or a hot oven, or mechanically crushing or cutting of a battery, that can result in an explosion.

Do not leave a battery in an extremely high temperature surrounding environment that can result in an explosion or the leakage of flammable liquid or gas. Do not leave a battery subjected to extremely low air pressure that may result in an explosion or the leakage of flammable liquid or gas.

CAUTION: Do not ingest battery. Chemical Burn Hazard

- This product contains a coin / button cell battery. If the coin / button cell battery is swallowed, it can cause severe internal burns in just 2 hours and can lead to death.
- Keep new and used batteries away from children.
- If the battery compartment does not close securely, stop using the product and keep it away from children.
- If you think batteries might have been swallowed or placed inside any part of the body, seek immediate medical attention

Warnings

Operating Temperature: 0 °C– 40 °C (32°F–104°F)

Operating Humidity: 10%–90%RH, Non-condensing

Handling Instructions for Lithium Ion Rechargeable Battery

Please read and follow the handling instructions for the battery before use. Improper use of the battery may cause heat, fire explosion, damage or capacity deterioration of the battery.

- Do not place or leave the battery and equipment in the reach of infants so that they are not able to swallow or mistreat the battery by mistake.

In case of ingestion, consult with a doctor immediately.

- Do not let leaked electrolyte come into contact with eyes or skin.

In such a case, immediately wash the area of contact with clean water and seek help from a doctor.

If not treated soon, prolonged contact may cause serious injury.

- Do not put the battery into a fire. Do not use it or leave it in a place near fire, heaters, or high temperature sources.

In such a case, the insulator in the battery may be melted, the safety vent and structure may be damaged, or the electrolyte may catch fire, all of which may cause heat generation, explosion, or fire.

- Do not submerge the battery in water, or wet the battery.

If the protecting device assembled in the battery is damaged, the battery may be charged with an abnormal current and voltage and may cause a chemical reaction within the battery, which may result in the cause of heat generation, explosion, or fire of the battery.

- Do not use any battery charger not specified by the manufacture, also follow the charge conditions specified by the manufacture.

If the battery is charged under other conditions (a high temperature, a high voltage / current, or an altered charger) not specified by the manufacture, the battery may become over-charged with an excessive current and cause heat, explosion, or fire with abnormal chemical reactions.

- Do not use, charge, or leave the battery near fire or in a car under the blazing sun. Such a high temperature may cause damage of the protecting device in the battery, which may result in an abnormal reaction, and then heat generation, explosion, or fire.
- Do not connect the battery reversed in positive (+) and negative (-) terminals in the charger or equipment.

In case the battery is connected and charged reversely, it may cause heat generation, explosion, or fire due to an abnormal chemical reaction.

- Do not let the battery terminals (+ and -) contact a wire or any metal (like a metal necklace or a hairpin) with which it carried or stored together.

In such a case, the battery will be shorted and cause an excessive current, which may result in heat generation, explosion, or fire.

- Do not connect the battery directly to an electric outlet or cigarette heater socket in car.

With a high voltage applied, the battery may overheat, explode, or cause fire.

- Do not throw or drop the battery.

Strong impact may damage the protecting device, which may cause an abnormal chemical reaction during charging and result in heat generation, explosion, or fire of the battery.

- Do not drive a nail in, hit with a hammer, or stamp on the battery.

In such a case, the battery may be deformed and shorted, which may cause heat generation, explosion, or fire of the battery.

- Do not solder the battery directly.

Heat applied during soldering may damage the insulator of the safety vent and mechanism, which may result in heat generation, explosion, or fire of the battery.

- Do not disassemble or alter the battery.

The battery employs a safety mechanism and a protecting device in order to avoid any danger.

If these are damaged, heat, explosion or fire may be caused.

CAUTION

- Do not put the battery in a microwave or a pressure cooker.

Sudden heat may damage the seal of the battery and may cause heat generation, explosion, or fire of the battery.

- Do not use the battery with other maker's batteries, different types and / or models of batteries such as dry batteries, nickel-metal hydride batteries, or nickel-cadmium batteries, or new and old lithium ion batteries together.

In such a case, over-discharge during use, or over-charge during charge may occur abnormal chemical reactions and may cause heat generation, explosion, or fire of the battery.

- Do not leave the battery in a charger or equipment if it generates an odor and /or heat, changes color and / or shape, leaks electrolyte, or causes any other abnormality.

In such a case, immediately take the battery out of the charge or equipment and keep it away from fire, otherwise, the battery might overheat, explode, or cause fire.

- Discontinue charging after specified charging time even if the charge is not complete, otherwise, the battery might cause heat generation, explosion, or fire.

- Do not use the battery in the place where the static electricity (more than the limit of the manufacturer's guarantee) occurs. Otherwise, the protecting device in the battery might be damaged and cause heat generation, explosion, or fire.

- Do not use the battery in other than the following conditions; otherwise, the battery might cause heat generation, damage, or deterioration of its performance.

Operating environment:

When the battery is charged: 0°C ~ +45°C (Humidity < 80%)






When stored 1 months: -20°C ~ +50°C (Humidity < 80%)

When stored 3 months: -20°C ~ +45°C (Humidity < 80%)

When stored 1 year: -20°C ~ +20°C (Humidity < 80%)

Please read and follow the above safety information when operating the device. We cannot guarantee that no accidents or damage will occur due to improper use of the device. Please use this product with care and operate at your own risk.

Explanation of the symbols on the product label

Symbol	Explanation
	Direct current
	Indoor use only
	Caution
	Operator's manual
	RECYCLING This product bears the selective sorting symbol for Waste electrical and electronic equipment (WEEE). This means that this product must be handled pursuant to European directive 2012/19/EU in order to be recycled or dismantled to minimize its impact on the environment. User has the choice to give his product to a competent recycling organization or to the retailer when he buys a new electrical or electronic equipment.