

AMT Instruction Manual



.380 BACKUP DOUBLE ACTION ONLY



THIS INSTRUCTION MANUAL SHOULD ALWAYS ACCOMPANY THIS FIREARM
AND BE TRANSFERRED WITH IT UPON CHANGE OF OWNERSHIP
OR WHEN THE FIREARM IS LOANED OR PRESENTED TO ANOTHER PERSON.

PLEASE WRITE TO ADDRESS BELOW FOR REPLACEMENT INSTRUCTION MANUAL.

ARCADIA MACHINE & TOOL, INC. - **6226** Santos Diaz St., Irwindale, CA **91702**

THE BASIC RULES OF SAFE FIREARMS HANDLING

1 LEARN THE MECHANICAL AND HANDLING CHARACTERISTICS OF THE FIREARM YOU ARE USING. Not all firearms are the same. The method of carrying and handling firearms varies in accordance with the mechanical provisions for avoiding accidental discharge and the various proper procedures for loading and unloading. No person should handle any firearm without first having thoroughly familiarized himself with the particular type of firearm he is using, and with safe gun handling in general.

2 ALWAYS KEEP THE MUZZLE POINTED IN A SAFE DIRECTION. Be sure of the bullet stop behind your target, even when dry-firing. Never let the muzzle of a firearm point at any part of your body or at another person. This is particularly important when loading or unloading a firearm. In the event of an accidental discharge, no injury can occur as long as the muzzle is pointing in a safe direction. A safe direction means a direction which will not permit a discharged bullet to strike a person, or to strike an object from which the bullet may ricochet. A safe direction must take into account the fact that a bullet may penetrate a wall, ceiling, floor, window, etc., and strike a person or damage property. Make it a habit to know exactly where the muzzle of your gun is pointing whenever you handle it, and be sure that you are always in control of the direction in which the muzzle is pointing, even if you fall or stumble.

3 FIREARMS SHOULD BE UNLOADED WHEN NOT IN USE. Firearms should be loaded only when you are in the field or on the target range or shooting area, ready to shoot. Firearms and ammunition should be securely locked in racks or cabinets when not in use. Ammunition should be safely stored separate from firearms. Store your firearms out of sight of visitors and children. It is the gun owner's responsibility to be certain that children and persons unfamiliar with firearms cannot gain access to firearms or ammunition.

4 BE SURE THE BARREL IS CLEAR OF OBSTRUCTIONS BEFORE SHOOTING. Even a bit of mud, snow or excess lubricating oil or grease in the bore may cause the barrel to bulge, or even burst on firing, and can cause injury to the shooter and bystanders. Be sure that you are using ammunition of the proper caliber and loading for the gun you are using. If the report or recoil on firing seems weak, or doesn't seem quite right, **CEASE FIRING IMMEDIATELY** and check to be sure that no obstruction has become lodged in the barrel.

5 BE SURE OF YOUR TARGET BEFORE YOU SHOOT. Don't shoot unless you know exactly where your bullet is going to strike. Be sure of the bullet stop behind your target, even when dry-firing with an unloaded gun. If you are in the field hunting, do not fire at a movement or noise. Take the time to be absolutely certain of your target before you pull the trigger.

6 WEAR SHOOTING GLASSES AND HEARING PROTECTORS WHEN YOU SHOOT. All shooters should wear protective shooting glasses and some form of hearing protectors when shooting. Exposure to shooting noise can damage hearing. Adequate vision protection when shooting is essential.

7 NEVER CLIMB A TREE OR FENCE WITH A LOADED FIREARM. Put the firearm down carefully before climbing a fence, and unload it before climbing or descending a tree or jumping over a ditch or other obstruction. Never pull or push a loaded firearm toward yourself or another person. When in doubt, unload your gun!

8 DON'T SHOOT AT A HARD SURFACE, OR AT WATER. Bullets can ricochet off many surfaces like rocks or the surface of water and travel in unpredictable directions with considerable velocity.

9 NEVER TRANSPORT A LOADED FIREARM. Firearms should always be unloaded before being placed in a vehicle. A suitable carrying case or scabbard should be used to carry a firearm to and from the shooting areas.

10. AVOID ALCOHOLIC BEVERAGES WHEN SHOOTING. Handling firearms while under the influence of alcohol, medication or mind-altering substance in any form constitutes a criminal disregard for the safety of others.

GENERAL FEATURES

OVERALL LENGTH 5 inches, WIDTH 1 1/16 inches

COMPLETE PISTOL WEIGHT 18 ounces

STATEMENT OF NON LIABILITY

WARNING:

This pistol is classified as a dangerous weapon and is surrendered by *AMT* with the understanding that the purchaser assumes all liability resulting from unsafe handling or any action that constitutes a violation of any applicable laws or regulations. *AMT* shall not be liable for personal injury or loss of property or life resulting from the use of this pistol under any circumstances, including intentional, reckless, negligent or accidental discharge.

Further, *AMT* will not be liable for any alterations to the pistol or any parts thereof. *AMT* will not condone or authorize any changes to be made after the pistol has left the factory. If your *AMT* pistol is in need of service or adjustment, follow the instructions in this manual under the section marked "SERVICE."

Please read the warnings in this manual carefully. Be sure you understand the functions of this pistol before loading and firing it. Carefully read the "SAFETY" section of this manual. Exercise safe handling of this pistol at all times.

PLEASE BE CAREFUL!

WARNING-NEVER USE AMMUNITION WHERE THE PRESSURE LEVELS EXCEED INDUSTRY STANDARDS. THE USE OF RELOADED AMMUNITION WILL VOID THE WARRANTY AND INJURY MAY VERY WELL RESULT.

USE ONLY FACTORY AMMUNITION.

Wear Safety Glasses and Ear Protection at all times when shooting!



SAFETY

All firearms must be used with strict attention to the basic rules of firearms safety, these rules are fundamental to safe and responsible firearms ownership and use. They are simple and reflect good common sense. The more you handle firearms, the more faithful you should be to these -elementary rules

1 a Before you shoot, read this manual completely. Be sure you understand the operation of **the firearm you intend** to shoot. **Study the owner's** manual carefully. Rehearse the functioning of the firearm until you are thoroughly familiar with it. There is no excuse for unsafe firearms handling.

If you are not familiar with the basics of firearms and the handling thereof, contact your local gun dealer, police department or the NRA for assistance in acquiring this training.

2. Always **be sure that the firearm is unloaded until the moment you wish** to shoot it, whether in the field or on the **range. Upon completion of your** shooting activity, unload **the firearm completely by emptying** and/or removing the magazine and then visually inspecting the chamber to be sure it is empty. Never take **anyone's word that a firearm is empty - CHECK IT!**

3. Never point the muzzle at **anything you do not intend to shoot.** Always be in control of where **the muzzle is pointed, even if you happen** to fall. Pointing the muzzle in a safe direction means a direction in which a discharged round **won't strike the shooters or bystanders, even in the event** the bullet ricochets or **passes through a wall or other b&r&de. This also applies to a deliberate** shot at game or target. Be sure of the backstop before firing the shot.

Wear SafetyGlasses and Ear Protection at all times when shooting!

4. Never drink alcoholic beverages or take medication or any other mind altering substance that may impair your judgement while engaged in shooting activities. This is as criminal and dangerous as drunk driving.

SAFETY OPERATION

.380 DOUBLE ACTION ONLY (D.A.O.) Model - This model fires every time the trigger is pulled. It takes approximately 8 pounds pressure to fire. When the trigger is pulled to the rear, the hammer goes back into a firing position and is released, firing the pistol. Never obstruct the travel position of the hammer. NEVER touch the trigger unless you want to fire the pistol. ALWAYS point this (or **any** other) pistol in a safe direction. This pistol has no external safeties. It will fire both WITH and WITHOUT a magazine in place. Removing the magazine does NOT unload the chambered round!

WARNINGS

The user should never depend on the operation of **a mechanism or any** other device to justify **careless** handling or permitting the pistol to be pointed in **an** unsafe direction.

This is **an auto loading pistol and is immediately loaded and ready to fire again after each shot until all cartridges in the magazine AND CHAMBER have been fired.**

This pistol will fire both with and without the magazine in place. Removing the magazine does not unload the chamber.

LOADING AND FIRING

Before performing the following operations, read this manual completely. Prior to loading this pistol, make sure the chamber is empty and check the bore to make sure it is free from excessive oil and is unobstructed. Firing the pistol with any obstruction in the bore may cause serious injury to the shooter and/or bystanders and damage the pistol.

WARNING: Cartridges must be fed from magazine, never load cartridges directly into chamber.

1. Be sure to use only clean factory ammunition. This pistol is not to be used with reloaded ammunition.
2. To load magazine, place the rim of the cartridge on top of follower and depress, slip cartridge rim back under lips of magazine. Magazine holds five rounds.
3. Insert magazine into pistol with bullet rounds facing forward, push magazine all the way up until magazine latch locks magazine in. **KEEP FINGER OFF TRIGGER.**

WARNING: Pistol is now ready to be charged (loaded). Point in a safe direction, **KEEP FINGER OFF TRIGGER.** Hold gun grip with your left hand; with your right hand, grip serrations on slide and pull slide all the way back. This brings the slide into rear motion and feeds the first cartridge out of the magazine and into the chamber. Your pistol is now charged (loaded) and ready to fire. We do not recommend carrying this pistol charged (loaded).

After firing last shot, remove magazine, after magazine is removed unload the pistol by pulling back the slide to visually make sure the chamber is empty. Also check window on the side of the slide, to verify the chamber is empty.

LOADED CHAMBER INSPECTION WINDOW



WARNING - ALWAYS ASSUME THERE IS A CARTRIDGE IN THE CHAMBER IF THE SLIDE IS CLOSED AND ALWAYS CHECK CHAMBER TO MAKE SURE IT IS EMPTY.

Wear Safety Glasses and Ear Protection at all times when shooting!

CLEARING A JAM

In **the event** that a cartridge “jams” or does not feed into the chamber, do not **force the** slide shut. Following is the proper procedure for cleaning the jammed pistol:

1. Be sure the muzzle is pointed in a safe direction. **KEEP FINGER OFF OF TRIGGER.**
2. Carefully remove the magazine. Pull the slide to its rear-most position. If drawing the slide all the way back does not pull the cartridge along with it, it may be necessary to use a small wood or plastic dowel, sharpened on one end, to gently remove the cartridge from the chamber and ejection port. Do not use **a** metal tool. **NEVER INSERT ANYTHING IN THE BARREL TO REMOVE CARTRIDGE.**
3. Carefully inspect the pistol to be sure that **a** cartridge did not become lodged in the magazine well of the grip frame.

UNLOADING

After completion of the shooting session, the following procedure should be carried out exactly as described to unload the pistol.

The .380 DA.0. pistol will not stay open after the last shot. ALWAYS CHECK THE CHAMBER AFTER USE TO MAKE SURE IT IS EMPTY. Never carry the pistol with a round in the chamber. Never transport or store the pistol with a round in the chamber or rounds in the magazine.

The following procedure must be followed to unload the pistol. Failure to follow this procedure exactly could result in the chamber being inadvertently loaded.

1. **KEEP FINGER OFF OF TRIGGER AND POINT THE MUZZLE IN A SAFE DIRECTION!**
2. Remove the magazine.
3. After the magazine is removed, you must pull back on the slide forcibly to extract the cartridge from the chamber and eject it out the ejection port. Drawing the slide **back** slowly **may** result in the cartridge falling in the magazine **well and becoming** lodged in the frame of the pistol. When you are certain **that** the chamber is empty, lower the slide to its forward position.

Wear Safety Glasses and Ear Protection at all times when shooting!

TAKEDOWN FOR CLEANING

Before you start, be absolutely certain that the pistol is unloaded by following the unloading instruction on page 5. Never work on a loaded firearm.

It is not necessary to disassemble the .380 D.A.O. to clean and lubricate, This can be done by pulling the slide back all the way to the rear position, then run a cleaning rod with a solvent coated patch through bore and chamber, then run a clean, dry patch through until clean. Oil slide rails and outside diameter of barrel where it rides in front of the slide.

If it becomes necessary to disassemble for cleaning the procedures are as follows —

1. Remove bolt pin with a 1/8" diameter punch, pull slide back approximately 1/2" so firing pin and spring will come out of bolt, then remove bolt by inserting a brass or aluminum rod into magazine well and drive bolt out of slide.
2. Slide will come forward off of frame, no other disassembly is necessary.

RE-ASSEMBLY

1. Replace recoil rod and spring into recoil rod hole in frame.
2. Insert front of recoil spring into spring hole at front of slide.
3. Pull slide back over the barrel, then down and back.
4. Pull slide back slightly, approximately 1/4", so bolt can be inserted into top of slide.
5. Drive bolt back into slide until retaining pin holes in side and bolt are aligned. (Use a soft face hammer to avoid damaging top of bolt or slide).
6. Replace firing pin and spring, push forward and let hammer down to hold in place, make sure RECESS in firing pin is lined up looking through retaining pin hole.
7. Replace bolt retaining pin.
8. Check for proper functioning before loading.

CLEANING

Frequency of cleaning depends upon the frequency of use of the pistol. Accumulation of powder fouling in the breech and chamber area may affect the functioning of the pistol causing jamming or misfiring. If either of these conditions develop, clean the pistol.

Wear Safety Glasses and Ear Protection at all times when shooting!

All areas of the breech, slide, magazine, chamber and bore should be scrubbed or wiped clean with a cleaning patch wetted with a gun powder solvent. After all areas have been thoroughly cleaned, wipe again with lightly oiled cloth.

SERVICE

Prior to shipment, each ,380 D.A.O. pistol is inspected and tested to ensure that it is in proper operating condition. Should the pistol require adjustment, repair or refinishing, we recommend that the pistol be returned directly to the factory SERVICE DEPARTMENT! There is no other way to be sure that work is performed in a properly equipped and staffed facility. Failure to use the factory services will result in voiding your warranty.

Except for guns still under warranty, all work will bear a net minimum charge of \$15.00.

All pistols returned are to be sent unloaded prepaid. All collect shipments will be refused.

For best service, always enclose a cover letter with the pistol furnishing serial number, model of pistol and the nature of the problem or work desired. A statement that the pistol is "defective" is not adequate and will only result in unnecessary delays. Try to be as specific as possible.

Federal regulations control the shipment of firearms. It may be impossible for the factory to return a pistol directly to you. Check your local regulations before shipment. If this is the case, we recommend that all firearms be sent through a federally licensed dealer.

Please be sure that both the magazine and the chamber are empty before shipping. Any firearms received in a loaded condition must be reported to the federal authorities.

PARTS AND ORDERING

All parts orders should be sent to the attention of the Parts Department. California residents include applicable sales tax.

When ordering parts, specify Model Name, Part Name and Part Number. Also include the complete serial number of the firearm.

Parts designated by an (*) asterisk must be factory fitted. The prices shown do not include labor, shipping and tax, if applicable. These parts will be replaced on an exchange basis only. The replaced parts will not be returned to you.

Wear Safety Glasses and Ear Protection at all times when shooting!

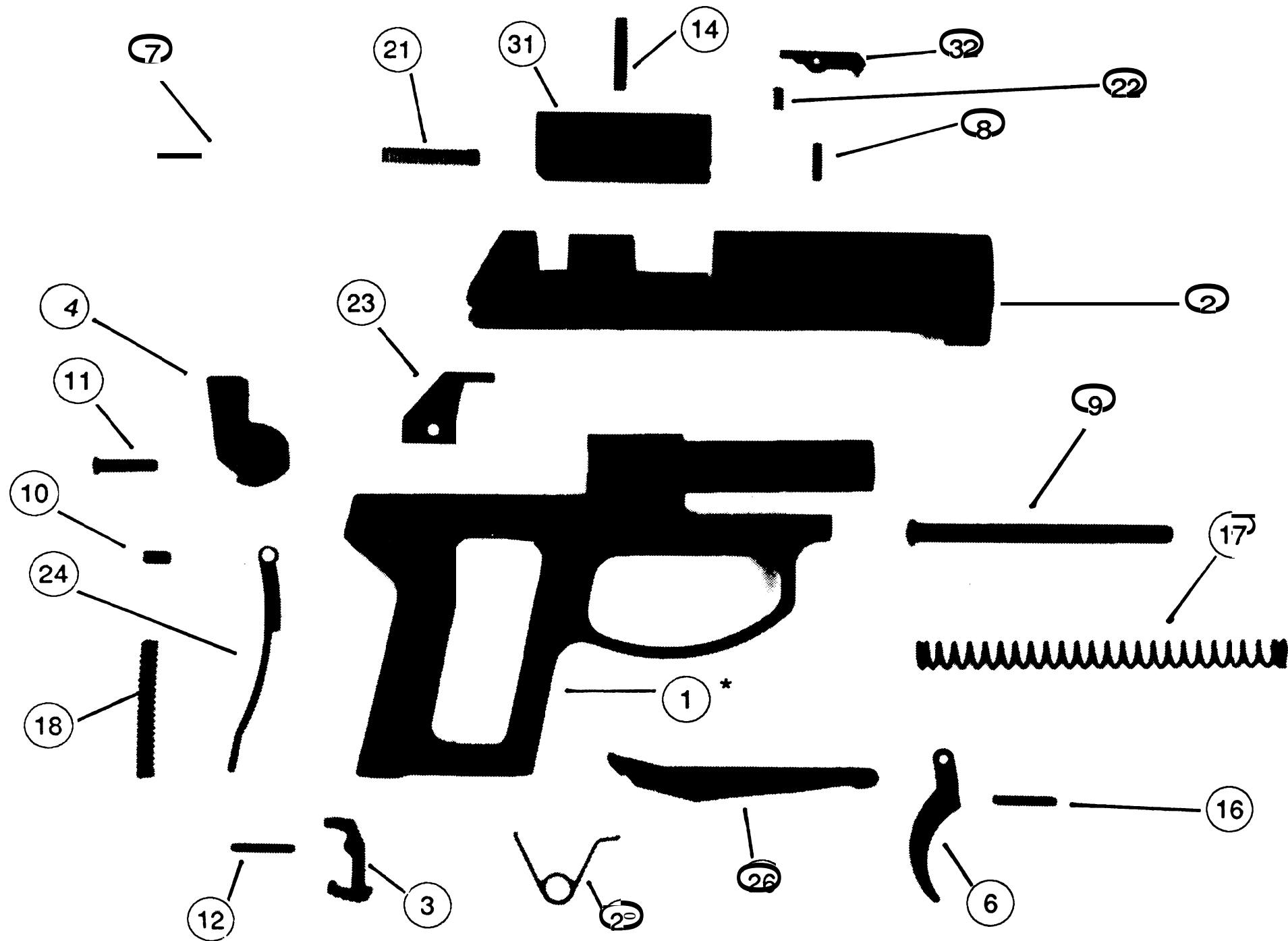
WARRANTY STATEMENT

BASED ON MAGNUSON, MOSS WARRANTY ACT. AMT offers no expressed warranty on its product line. *AMT* does recognize its obligation concerning implied warranty. *AMT* will continue to stand behind its products as it has in the past. *AMT* products will be serviced for a period of one year from date of retail purchase, for defects of material or workmanship, at no charge to purchaser. Be sure to retain your sales slip as proof of purchase date when making a claim.

This instruction manual should always accompany this firearm and be transferred with it upon change of ownership.

IF A REPLACEMENT INSTRUCTION MANUAL IS NEEDED,
PLEASE WRITE TO ADDRESS BELOW.

ARCADIA MACHINE & TOOL, INC.
6226 Santos Diaz St., Irwindale, CA 91702



| Part No. | Part Name | Retail Price | Part No. | Part Name | Retail Price |
|-----------|---------------------------------------|--------------|------------|--|--------------|
| 380DAO-1* | FRAME (Factory Only) | | 380DAO-19 | M A G A Z I N E SPRING (NOT SHOWN) | 3.00 |
| 380DAO-2 | SLIDE | 45.00 | 380DAO-20 | T R I G G E R B A R SPRING..... | 3.00 |
| 380DAO-3 | M A G . C A T C H | 8.00 | 380DAO-21 | F I R I N G P I N S P R I N G | 1.50 |
| 380DAO-4 | HAMMER | 12.00 | 380DAO-22 | EXTRACTOR SPRING | 1.50 |
| 380DAO-5 | FLOOR PLATE (NOT SHOWN) | 5.00 | 380DAO-23 | E J E C T O R | 2.50 |
| 380DAO-6 | TRIGGER | 7.00 | 380DAO-24 | HAMMER STRUT | 6.00 |
| 380DAO-7 | FIRING PIN | 6.00 | 380DAO-25 | MAGAZINE TUBE (NOT SHOWN) | 7.50 |
| 380DAO-8 | E X T R A C T O R P I N | 1.00 | 380DAO-26 | T R I G G E R B A R | 10.00 |
| 380DAO-9 | R E C O I L R O D | 4.00 | 380DAO-27 | MAG FOLLOWER (NOT SHOWN) | 1.75 |
| 380DAO-10 | H A M M E R S T R U T P I N | 1.00 | 380DAO-28 | MAG PLATE LATCH (NOT SHOWN) | 1.00 |
| 380DAO-11 | HAMMER PIN. | 1.50 | 380DAO-29 | G R I P S E T S (N O T S H O W N) | 7.50 |
| 380DAO-12 | MAG LATCH PIN..... | 1.00 | 380DAO-30* | BARREL (Factory Only) | 60.00 |
| 380DAO-13 | GRIP SCREW (NOT SHOWN) | 0.00 | 380DAO-31 | B O L T | 30.00 |
| 380DAO-14 | B O L T R E T A I N I N G P I N | 1.00 | 380DAO-32 | EXTRACTOR | 7.00 |
| 380DAO-16 | T R I G G E R P I V O T P I N | 1.00 | | | |
| 380DAO-17 | R E C O I L S P R I N G | 2.50 | | COMPLETE MAGAZINE ASSEMBLY | 16.50 |
| 380DAO-18 | H A M M E R S P R I N G | 2.50 | | SHIPPING & HANDLING CHARGE.... | 3.00 |

PLEASE SEND PAYMENT IN FULL, (including shipping costs) ALONG WITH WRITTEN ORDER WHEN ORDERING PARTS.
 (Checks or Money Orders Accepted)

ARCADIA MACHINE & TOOL, INC. - 6226 Santos Diaz St., Irwindale, CA ☎️ 📧 • (818) 334-6629
 (Prices subject to change without notice.)