

TOLUENE

(CAS number- 108-88-3)

TAJMTF-LMAERY8972

Taj Active Pharmaceuticals Ingredients

www.tajapi.com

Active Pharmaceutical Ingredients
TAJ PHARMACEUTICALS LIMITED INDIA

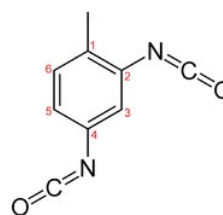
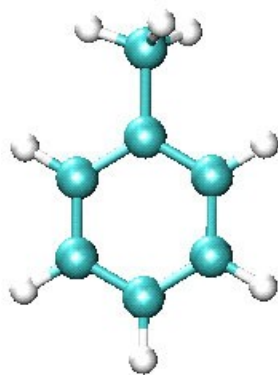


Raw Material / Chemicals Index

Taj Pharmaceuticals Ltd.

TOLUENE

(CAS Number 108-88-3)



SPECIFICATION OF TOLUENE

Property	Unit	Specification	Test Method
Appearance	-	Clear	Visual
Color (Apha)	-	20 max	ASTM D-1209
Specific Gravity at (15.6/15.6°C)	-	0.869-0.873	ASTM D-891
Distillation Range (97% Vol.)	°C	1.0 include 110.6	ASTM D-850
Non-Aromatic	Wt%	1.5 max	ASTM D-4492
Acid Wash Color	-	2 max	ASTM D-848
Acidity	-	No free acid	ASTM D-847
Sulfur Compound	-	None detected	ASTM D-853

Copper Corrosion

-

pass

ASTM D-849

Product : TOLUENE

Molecular Weight: 92.14

Chemical Formula: C6H5-CH3

Hazards Identification

Emergency Overview

POISON! DANGER! HARMFUL OR FATAL IF SWALLOWED. HARMFUL IF INHALED OR ABSORBED THROUGH SKIN. VAPOR HARMFUL. FLAMMABLE LIQUID AND VAPOR. MAY AFFECT LIVER, KIDNEYS, BLOOD SYSTEM, OR CENTRAL NERVOUS SYSTEM. CAUSES IRRITATION TO SKIN, EYES AND RESPIRATORY TRACT.

Fire Fighting Measures

Fire:

Flash point: 7C (45F) CC

Autoignition temperature: 422C (792F)

Flammable limits in air % by volume:

lcl: 1.1; ucl: 7.1

Flammable liquid and vapor!

Dangerous fire hazard when exposed to heat or flame. Vapors can flow along surfaces to distant ignition source and flash back.

Explosion:

Above flash point, vapor-air mixtures are explosive within flammable limits noted above. Contact with strong oxidizers may cause fire or explosion. Sensitive to static discharge.

Fire Extinguishing Media:

Dry chemical, foam or carbon dioxide. Water may be used to flush spills away from exposures and to dilute spills to non-flammable mixtures.

Special Information:

In the event of a fire, wear full protective clothing and NIOSH-approved self-contained breathing apparatus with full facepiece operated in the pressure demand or other positive pressure mode. Water spray may be used to keep fire exposed containers cool.

Accidental Release Measures

Ventilate area of leak or spill. Remove all sources of ignition. Wear appropriate personal protective equipment as specified in Section 8. Isolate hazard area. Keep unnecessary and unprotected personnel from entering. Contain and recover liquid when possible. Use non-sparking tools and equipment. Collect liquid in an appropriate container or absorb with an inert material (e. g., vermiculite, dry sand, earth), and place in a chemical waste container. Do not use combustible materials, such as saw dust. Do not flush to sewer! If a leak or spill has not ignited, use water spray to disperse the vapors, to protect personnel attempting to stop leak, and to flush spills away from exposures. US Regulations (CERCLA) require reporting spills and releases to soil, water and air in excess of reportable quantities.

Handling and Storage

Protect against physical damage. Store in a cool, dry well-ventilated location, away from any area where the fire hazard may be acute. Outside or detached storage is preferred. Separate from incompatibles. Containers should be bonded and grounded for transfers to avoid static sparks. Storage and use areas should be No Smoking areas. Use non-sparking type tools and equipment, including explosion proof ventilation. Containers of this material may be hazardous when empty since they retain product residues (vapors, liquid); observe all warnings and precautions listed for the product.

Exposure Controls/Personal Protection

Airborne Exposure Limits:

Toluene:

- OSHA Permissible Exposure Limit (PEL):

200 ppm (TWA); 300 ppm (acceptable ceiling conc.); 500 ppm (maximum conc.).
- ACGIH Threshold Limit Value (TLV):
20 ppm (TWA), A4 - Not Classifiable as a Human Carcinogen.

Ventilation System:

A system of local and/or general exhaust is recommended to keep employee exposures below the Airborne Exposure Limits. Local exhaust ventilation is generally preferred because it can control the emissions of the contaminant at its source, preventing dispersion of it into the general work area. Please refer to the ACGIH document, *Industrial Ventilation, A Manual of Recommended Practices*, most recent edition, for details.

Personal Respirators (NIOSH Approved):

If the exposure limit is exceeded and engineering controls are not feasible, a half-face organic vapor respirator may be worn for up to ten times the exposure limit, or the maximum use concentration specified by the appropriate regulatory agency or respirator supplier, whichever is lowest. A full-face piece organic vapor respirator may be worn up to 50 times the exposure limit, or the maximum use concentration specified by the appropriate regulatory agency or respirator supplier, whichever is lowest. For emergencies or instances where the exposure levels are not known, use a full-face piece positive-pressure, air-supplied respirator. **WARNING:** Air-purifying respirators do not protect workers in oxygen-deficient atmospheres.

Skin Protection:

Wear impervious protective clothing, including boots, gloves, lab coat, apron or coveralls, as appropriate, to prevent skin contact.

Eye Protection:

Use chemical safety goggles and/or a full face shield where splashing is possible. Maintain eye wash fountain and quick-drench facilities in work area.

Physical and Chemical Properties

Appearance: Clear, colorless liquid.
Odor: Aromatic benzene-like.
Solubility: 0.05 gm/100gm water @ 20C (68F).
Specific Gravity: 0.86 @ 20C / 4 C
pH: No information found.
% Volatiles by volume @ 21C (70F): 100
Boiling Point: 111C (232F)
Melting Point: -95C (-139F)
Vapor Density (Air=1): 3.14
Vapor Pressure (mm Hg): 22 @ 20C (68F)
Evaporation Rate (BuAc=1): 2.24

Stability and Reactivity

Stability:

Stable under ordinary conditions of use and storage. Containers may burst when heated.

Hazardous Decomposition Products:

Carbon dioxide and carbon monoxide may form when heated to decomposition.

Hazardous Polymerization:

Will not occur.

Incompatibilities:

Heat, flame, strong oxidizers, nitric and sulfuric acids, chlorine, nitrogen tetroxide; will attack some forms of plastics, rubber, coatings.

Conditions to Avoid:

Heat, flames, ignition sources and incompatibles.

Toxicological Information

Toxicological Data:

Oral rat LD50: 636 mg/kg; skin rabbit LD50: 14100 uL/kg; inhalation rat LC50: 49 gm/m³/4H; Irritation data: skin rabbit, 500 mg, Moderate; eye rabbit, 2 mg/24H, Severe. Investigated as a tumorigen, mutagen, reproductive effector.

Reproductive Toxicity:

Has shown some evidence of reproductive effects in laboratory animals.

Ecological Information

Environmental Fate:

When released into the soil, this material may evaporate to a moderate extent. When released into the soil, this material is expected to leach into groundwater. When released into the soil, this material may biodegrade to a moderate extent. When released into water, this material may evaporate to a moderate extent. When released into water, this material may biodegrade to a moderate extent. When released into the air, this material may be moderately degraded by reaction with photochemically produced hydroxyl radicals. When released into the air, this material is expected to have a half-life of less than 1 day. This material is not expected to significantly bioaccumulate. This material has a log octanol-water partition coefficient of less than 3.0. Bioconcentration factor = 13.2 (eels).

Environmental Toxicity:

This material is expected to be toxic to aquatic life. The LC50/96-hour values for fish are between 10 and 100 mg/l.

Disposal Considerations

Whatever cannot be saved for recovery or recycling should be handled as hazardous waste and sent to a RCRA approved incinerator or disposed in a RCRA approved waste facility. Processing, use or contamination of this product may change the waste management options. State and local disposal regulations may differ from federal disposal regulations. Dispose of container and unused contents in accordance with federal, state and local requirements.

Transport Information

Domestic (Land, D.O.T.)

Proper Shipping Name: TOLUENE

Hazard Class: 3

UN/NA: UN1294

Packing Group: II

Information reported for product/size: 390LB

International (Water, I.M.O.)

Proper Shipping Name: TOLUENE

Hazard Class: 3

UN/NA: UN1294

Packing Group: II

Information reported for product/size: 390LB

WARNING:

THIS PRODUCT CONTAINS A CHEMICAL(S) KNOWN TO THE STATE OF CALIFORNIA TO CAUSE BIRTH DEFECTS OR OTHER REPRODUCTIVE HARM.

Other Information

NFPA Ratings: Health: **2** Flammability: **3** Reactivity: **0**

Label Hazard Warning:

POISON! DANGER! HARMFUL OR FATAL IF SWALLOWED. HARMFUL IF INHALED OR ABSORBED THROUGH SKIN. VAPOR HARMFUL. FLAMMABLE LIQUID AND VAPOR. MAY AFFECT LIVER, KIDNEYS, BLOOD SYSTEM, OR CENTRAL NERVOUS SYSTEM. CAUSES IRRITATION TO SKIN, EYES AND RESPIRATORY TRACT.

Label Precautions:

Keep away from heat, sparks and flame.
Keep container closed.

Use only with adequate ventilation.
 Wash thoroughly after handling.
 Avoid breathing vapor.
 Avoid contact with eyes, skin and clothing.

Label First Aid:

Aspiration hazard. If swallowed, DO NOT INDUCE VOMITING. Give large quantities of water. Never give anything by mouth to an unconscious person. If vomiting occurs, keep head below hips to prevent aspiration into lungs. If inhaled, remove to fresh air. If not breathing, give artificial respiration. If breathing is difficult, give oxygen. In case of contact, immediately flush eyes or skin with plenty of water for at least 15 minutes. Remove contaminated clothing and shoes. Wash clothing before reuse. In all cases call a physician immediately.

Product Use:

Laboratory Reagent.

Revision Information:

No Changes.

Toluene



DANGER

Obtain special instructions before use.
 Do not handle until all safety precautions have been read and understood.

Highly flammable liquid and vapour. May be fatal if swallowed and enters airways. Causes damage to central nervous system if inhaled. Causes damage to central nervous system, liver and kidneys through prolonged or repeated exposure. May damage fertility or the unborn child. Harmful if inhaled. May be harmful if swallowed. Causes skin irritation. May cause respiratory irritation. May cause drowsiness and dizziness. Toxic to aquatic life.



Keep away from heat, sparks and flame — No smoking. Take precautionary measures against static discharge. Ground/bond container and receiving equipment. Use only non-sparking tools. Do not breathe vapours. Wear protective gloves and eye/face protection. Use only in a well-ventilated area. Keep container closed when not in use. Store in a cool, well-ventilated place away from heat and ignition sources. Store locked up in a closed container.

IN CASE OF FIRE: Use carbon dioxide, dry chemicals or appropriate foam.



FIRST AID:

IF SWALLOWED: Immediately call a POISON CENTER or doctor/physician. Do NOT induce vomiting. IF ON SKIN: Remove/take off immediately all contaminated clothing. Wash with plenty of soap and water. Get medical advice/attention. IF INHALED: Call a POISON CENTER or doctor/physician.

PRODUCT IDENTIFIER (CAS # 108-88-3)		TOLUENE		REFERENCE TO123421
HEALTH	2	WARNING ! Flammable solid. May ignite in moist air. Reacts violently with water. Corrosive material. Causes burns to the skin and eyes. May cause severe burns of mouth and throat. May be fatal if swallowed. May cause lung injury - effects may be delayed. May cause sensitization by skin contact.		
FLAMMABILITY	3	PRECAUTION: Keep away from heat, sparks and flame. Avoid contact with water. Keep away from incompatibles. Use with adequate ventilation. Keep container tightly closed. Handle in accordance with good industrial hygiene and safety practices. Do not swallow. Do not breathe dust. Avoid contact with eyes, skin and clothing. Wash thoroughly after handling. Wear protective goggles, full face shield, impervious boots, gloves and apron.		
REACTIVITY	0	FIRST AID: If inhaled, remove from contaminated atmosphere. For skin contact, flush with water for at least 15 minutes, while removing contaminated clothing. Launder clothing before reuse. For eye contact, flush with running water for at least 20 minutes. If ingested, do not induce vomiting. Have victim rinse mouth with water, then let victim drink water or milk. Never give anything by mouth if victim is unconscious. For all cases, obtain medical attention immediately.		
REFER TO SAFETY DATA SHEET				
PERSONAL PROTECTIVE EQUIPMENT Splash Goggles + Gloves + Synthetic Apron + Dust and Vapor Respirator		GHS HAZARD SYMBOLS 		SHIPPING DESCRIPTION TOLUENE UN 1294

We have experience in Exporting and Manufacturing of all Countries and Overseas medicines in quick reliable manner and we are very interested to start collaboration with your company or organisation!



2004 - 2010 Taj Pharmaceuticals Limited. All rights reserved

Note:-We are committed to helping you find the right answers to your questions and concerns. However, this web site is not intended to give investment advice, promote the use of Taj Pharmaceuticals Ltd products or provide information on which to base medical treatment. If you have questions regarding any Taj Pharmaceuticals Ltd product or are experiencing a medical emergency, please consult your health care provider. **Active Pharmaceutical Ingredients** manufacturer, exporter, drug ingredients, pharmaceuticals, India

Additionally, contact information on this web site cannot be used to report adverse drug events. If you are a physician, please follow the procedures required by your country's regulations. Please choose one of the given options to contact us and we will respond to****