

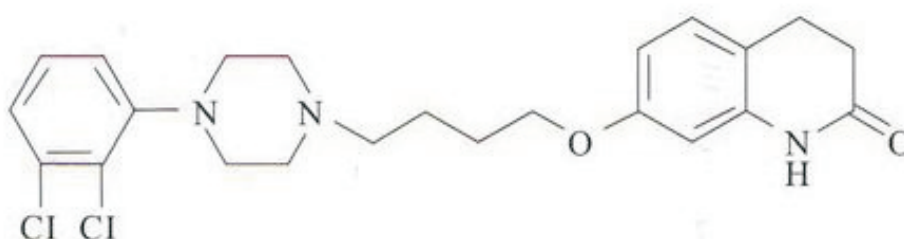
Aripiprazole Cas No. : 129722-12-9

The drug information provided here is for educational purposes only. It is intended to supplement, not substitute for, the diagnosis, treatment and advice of a medical professional. This drug information does not cover all possible uses, precautions, side effects and interactions. It should not be construed to indicate that this or any drug is safe for you. Consult your medical professional for guidance before using any prescription or over the counter drugs.

Active Pharmaceuticals Ingredients Manufacturers



Taj Pharma PDF

Taj Pharmaceuticals Ltd.**Aripiprazole****CAS No. : 129722-12-9****Generic Name:** Aripiprazole**Chemical Name:** 7-[4-[4-(2,3-dichlorophenyl)-1-piperazinyl]butoxy]-3,4-dihydro-2(1H)-quinolinone**CAS No. :** 129722-12-9**Molecular Formula:** C₂₃H₂₇Cl₂N₃O₂**Molecular Weight:** 448.38**Specification:** Enterprises standard**Appearance:** Off-white to white crystal powder**Melting point:** 136-140**Water:** 0.5%**Residue on ignition:** 0.1%**Heavy metals:** 20ppm**Assay:** 99%**Use:** Narcoleptics**ATC code :** N05AX12**PubChem :** 60795**DrugBank :** APRD00638

Systematic (IUPAC) name 7-[4-[4-(2,3-dichlorophenyl) piperazin-1-yl]butoxy]-3,4-dihydro-1H-quinolin-2-one
Identifiers CAS number 129722-12-9 ATC code N05AX12 PubChem 60795 DrugBank APRD00638 Chemical data
Formula C₂₃H₂₇Cl₂N₃O₂ **Mol. weight** 448.385 **Pharmacokinetic data** Bioavailability 90% **Metabolism** liver **Half life**
 75h (active metabolite : 94h) **Excretion** feces and urine **Therapeutic considerations** Pregnancy cat. C (USA) **Legal status.**

Important Disclaimer :

The drug information provided here is for educational purposes only. It is intended to supplement, not substitute for, the diagnosis, treatment and advice of a medical professional. This drug information does not cover all possible uses, precautions, side effects and interactions. It should not be construed to indicate that this or any drug is safe for you. Consult your medical professional for guidance before using any prescription or over the counter drugs.

ABILIFY tablets are available in 2-mg, 5-mg, 10-mg, 15-mg, 20-mg, and 30-mg strengths. Inactive ingredients include cornstarch, hydroxypropyl cellulose, lactose monohydrate, magnesium stearate, and microcrystalline cellulose. Colorants include ferric oxide (yellow or red) and FD&C Blue No. 2 Aluminum Lake.

USES**How to uses**

Take this medication by mouth, usually once daily, with or without food; or take as directed by your doctor. Do not take this medication more often or increase your dose without consulting your doctor. Your condition will not improve any faster but the risk of serious side effects will be increased. Do not stop taking this drug without your doctor's approval. Use this medication regularly in order to get the most benefit from it. Remember to use it at the same time each day.

Use Abilify Oral

Read the Medication Guide provided by your pharmacist before you start using aripiprazole and each time you get a refill. If you have any questions, consult your doctor or pharmacist.

Take this medication by mouth with or without food, usually once daily or as directed by your doctor. If using the oral solution, measure the dose carefully using a medicine spoon or cup. Dosage is based on your medical condition and response to therapy.



Taj Pharmaceuticals Ltd
Aripiprazole
Cas no. 129722-12-9



To reduce the risk of side effects, your doctor may gradually increase your dose. Follow your doctor's instructions carefully.

If you are using the rapidly dissolving tablets, dry your hands before peeling back the foil on the blister pack to carefully remove a tablet. Do not push the tablet through the foil. Place the tablet on the tongue, allow it to dissolve completely, then swallow it with saliva. Do not crush, split, or break the tablet before taking it. Do not remove the tablet from the blister pack until just before taking. No water is needed to take this medication.

Do not take this medication more often or increase your dose without consulting your doctor. Your condition will not improve any faster, but the risk of serious side effects will be increased.

Use this medication regularly in order to get the most benefit from it. To help you remember, use it at the same time each day.

Aripiprazole medicine contains the active ingredient aripiprazole, which is a type of medicine known as an atypical antipsychotic. Aripiprazole is used in the treatment of schizophrenia, the crippling psychological disorder that causes its victims to lose touch with reality, often triggering hallucinations, delusions, and disorganized thought. The drug is thought to work by modifying sensitivity to two of the brain's chief chemical messengers, serotonin and dopamine.

SIDE EFFECTS

What are the Side Effects of Aripiprazole Medication

Medicines and their possible side effects can affect individual people in different ways. The following are some of the side effects that are known to be associated with Aripiprazole medicine. Because a side effect is stated here, it does not mean that all people using Aripiprazole medicine will experience that or any side effect.

Vomiting, fever, lightheadedness, dizziness, change in weight, blurred vision or drowsiness may occur. If any of these effects persist or worsen, notify your doctor or pharmacist promptly. Tell your doctor immediately if any of these highly unlikely but very serious side effects occur: irregular or unusually fast heartbeat (especially with fever and increased sweating), severe muscle stiffness, uncontrolled muscle movements (especially of the face or tongue), unusual increase in thirst or urination, vision changes. A serious allergic reaction to this drug is unlikely, but seek immediate medical attention if it occurs. Symptoms of a serious allergic reaction include: rash, itching, swelling, severe dizziness, trouble breathing. If you notice other effects not listed above, contact your doctor or pharmacist.

Call your doctor right away if you notice any of these side effects: Allergic reaction: Itching or hives, swelling in your face or hands, swelling or tingling in your mouth or throat, chest tightness, trouble breathing. Change in how much or how often you urinate. Chest pain, fast or slow heartbeat. Confusion, unusual behavior, depressed mood, or thoughts of hurting yourself. Excessive hunger or thirst, increased urination, and weakness. Extreme sleepiness or weakness with nausea, vomiting, or diarrhea. Fever, sweating, confusion, uneven heartbeat, or muscle stiffness. Lightheadedness or fainting. Seizures. Trouble swallowing. Twitching or muscle movements you cannot control (often in your face, tongue, or jaw). Unusual bleeding, bruising, or weakness.

Medicines and their possible side effects can affect individual people in different ways. The following are some of the side effects that are known to be associated with this medicine. Because a side effect is stated here, it does not mean that all people using this medicine will experience that or any side effect.

- * constipation,
- * an inner sense of restlessness or need to move (akathisia),
- * headache,



- * nausea,
- * upset stomach,
- * vomiting, agitation,
- * anxiety,
- * insomnia,
- * sleepiness,
- * lightheadedness, and
- * tremor.



DOASAGE

Aripiprazole usually is taken once per day. The starting amount usual is magnesium 10 or 15 once daily. The amount can be increased with the hour to carry out the desired effect. Aripiprazole can be taken with or without food.

What should you do if you miss a dose?

If you miss an amount, and if you remember the same day, then you if the motionless catch it that day. If you remember the next day, jump the missed amount then, and take your regular proportioning, do not double upwards on your amount.

Symptoms of overdose include nausea, weakness, diarrhea, somnolence, and vomiting. Treatment is supportive; an ECG should be obtained and monitored if abnormalities are present. Due to the high degree of protein binding, hemodialysis is unlikely to be effective in removing aripiprazole.

Children 10 to 17 yr of age

PO Start with 2 mg/day, then titrate to 5 mg/day after 2 days, and to a target dose of 10 mg after 2 additional days. Subsequent dose increases should be in 5 mg/day increments. 30 mg/day was not shown to be more efficacious than 10 mg/day.

General Advice

- * May be given orally without regard to meals.
- * Parenteral administration is intended for IM use only; inject slowly, deep into muscle mass. Do not give IV or subcutaneously.
- * Oral solution may be substituted for tablets on a mg-per-mg basis up to a 25 mg dose. Patients receiving 30 mg tablets should receive 25 mg of the solution.
- * Dosing for the orally disintegrating tablet is the same as the oral tablet.
- * IM injection has not been evaluated in children.

Note: Veterinary use

There have been anecdotal reports of oseltamivir reducing disease severity and hospitalization time in canine parvovirus infection. The drug may limit the ability of the virus to invade the crypt cells of the small intestine and decrease gastrointestinal bacteria colonization and toxin production.

This document plus the full buyer/ prescribing information, prepared for health professionals can be found at:

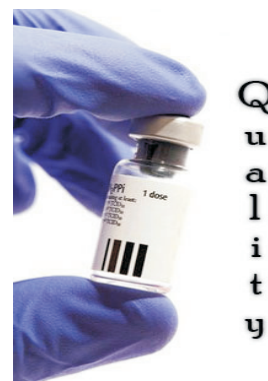
<http://www.tajapi.com>

or by contacting the sponsor, Taj Pharmaceuticals Limited., at:
91 022 30601000.

This leaflet was prepared by
Taj Pharmaceuticals Limited,
Mumbai (India).

MPSTJ278

Last revised: 29 August 2009



Taj Group of Companies

TAJ PHARMACEUTICALS LIMITED INDIA

"Working for human race"