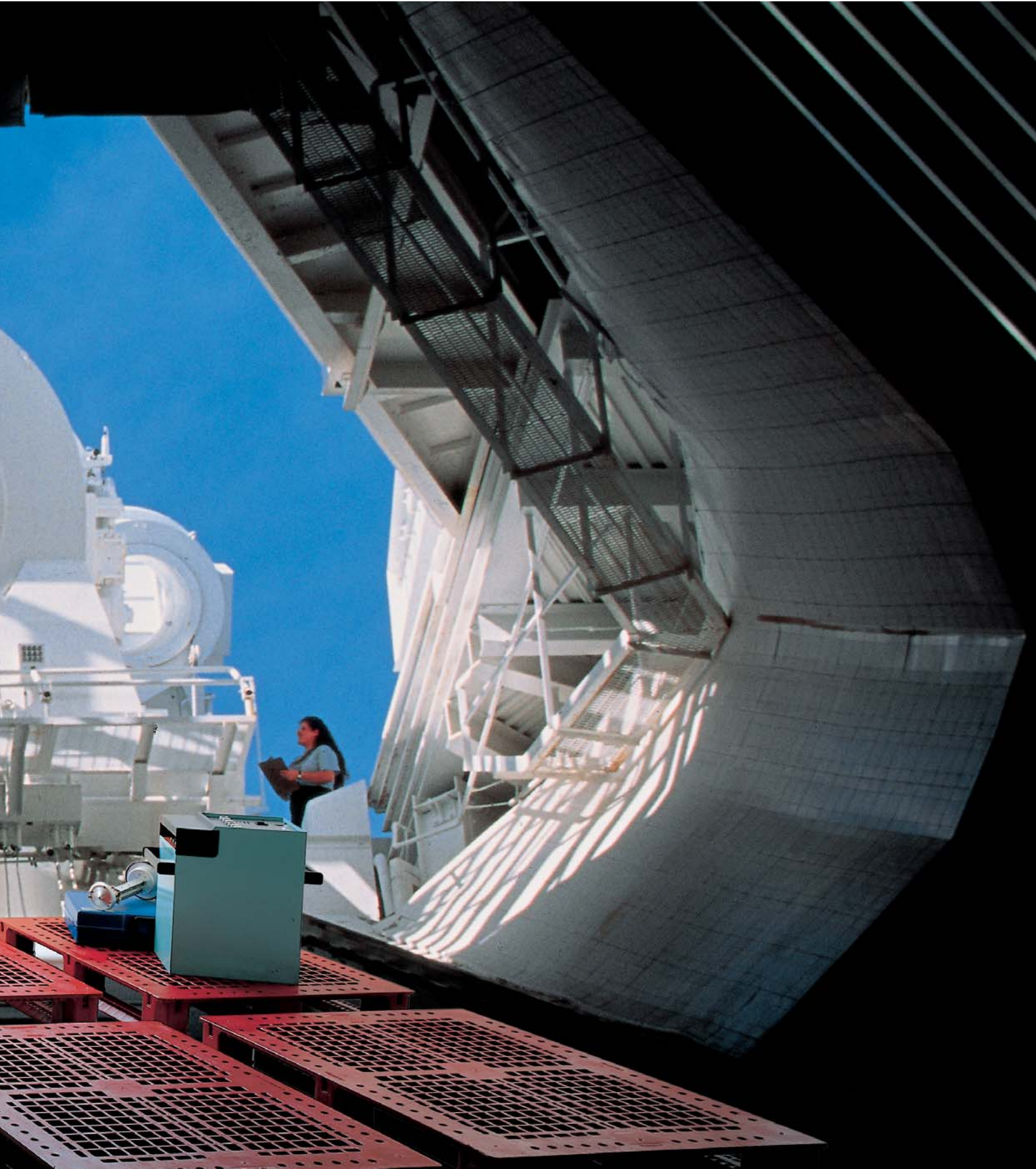


Pallets





Cheese manufacture: smooth surfaces promote hygiene (ref. 3L302)



Pharmaceutical distribution: rigid and stable on pallet racking (ref. 3M302)

No other name carries so much weight!

- Safely racks heavy loads of up to 1.2 tonnes for standard models, up to 1.6 tonnes for steel reinforced versions.
- Ribs, encapsulated within the pallet shell, produce a rigid structure for minimum deflection on racking and fork lifts.
- Wide width fork entry slots for easy and fast access by fork lifts and pallet trucks.
- Bevelled runners and rounded edges guide forks and help prevent damage.
- Extended collar versions combine an off-set 25mm collar with a full 1,200 x 1,000mm deck (standard collars encroach on the deck).
- Identification options include hot-foil printing owners logo & message, rib-pads for easy removal of adhesive labels, bar code label areas and R.F. tagging.
- Smooth surfaces and curved corners promote hygiene by preventing dirt or water retention and allowing fast and thorough washing.
- Compatible with all standard automatic handling systems.
- Maestro is rigorously tested for:
 - Deflection (flex) on racking
 - Drop test
 - Impact resistance
 - Stress cracking



Version with extended collar secures empty containers upside-down (allows drainage after washing and prevents rain water ingress if stored outside).



Strapping points for attaching pallet covers.



Vertical feet compatible with conveyor guides.



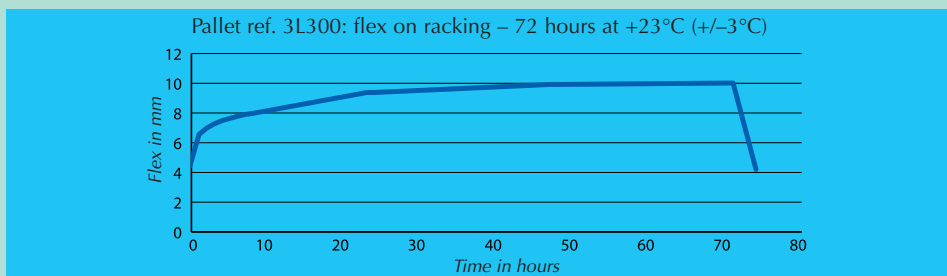
Runners designed for use on roller conveyors.



Smooth surfaces and curved corners for easy and thorough cleaning.



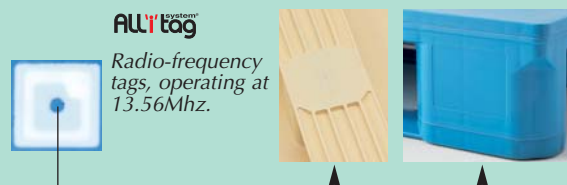
Compatible with all types of handling equipment.



1,000 Kg load made up of 400 x 300mm containers (without shrink-wrap). Residual flex after two hours rest.



1. Rib-pad allows easy removal of adhesive labels without leaving a sticky residue.
2. & 3. Large areas for hot-foil printing or embossing. Recessed areas protect bar code labels from knocks &





Food handling: compatible with automated handling systems (ref. 3L302)

Maestro Pallets

1200 x 800

Maestro with three runners

Standard models

Pallet loading for evenly distributed load:

- dynamic: up to 1.2 tonnes
- static: up to 5.0 tonnes
- racking: up to 1.0 tonne (depending on type and configuration of load)



Corners allow secure stretch wrapping.

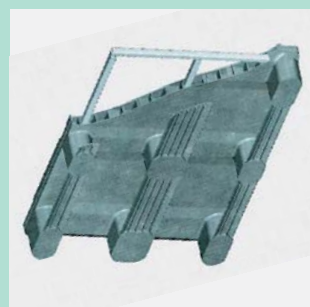
Reinforced steel core models

Pallet loading for evenly distributed load:

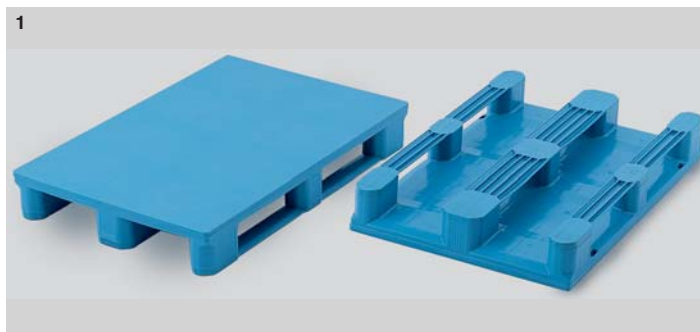
- dynamic: up to 1.5 tonnes
- static: up to 5.0 tonnes
- racking: up to 1.4 tonnes (depending on type and configuration of load)



Stable block stacking.

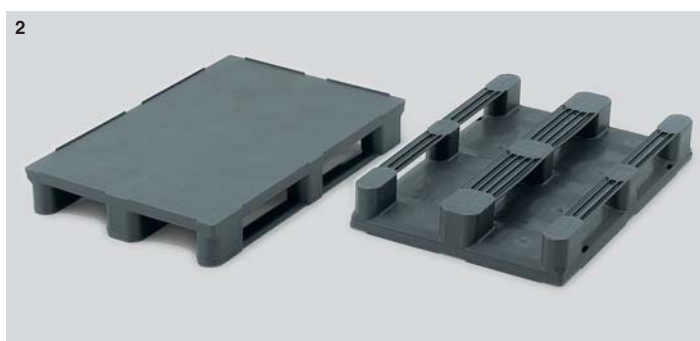


Steel reinforced models safely rack loads of up to 1.6 tonnes.



1 Ref. 3L300
pallet with 3 runners
smooth deck
Dim.: L 1,200 x w 800 x h 158mm
Dim.: L 47.2 x w 31.5 x h 6.2"
Weight: 19 Kg/42 lbs.
Colour: blue, ivory

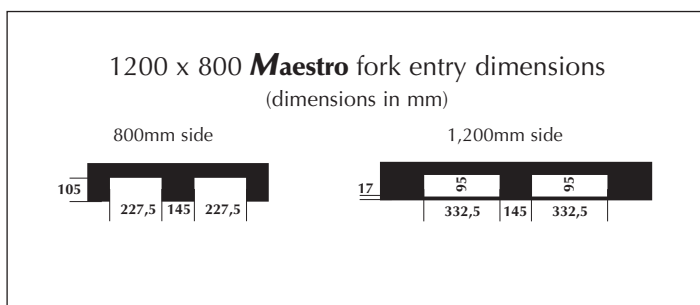
Ref. 3L302
pallet with 3 runners
smooth deck with 7mm collar
Dim.: L 1,200 x w 800 x h 165mm
Dim.: L 47.2 x w 31.5 x h 6.5"
Weight: 19 Kg/42 lbs.
Colour: blue, ivory



Ref. 3L350
reinforced pallet with 3 runners
smooth deck
Dim.: L 1,200 x w 800 x h 158mm
Dim.: L 47.2 x w 31.5 x h 6.2"
Weight: 25 Kg/55 lbs.
Colour: grey

2 Ref. 3L352
reinforced pallet with 3 runners
smooth deck with 7mm collar
Dim.: L 1,200 x w 800 x h 165mm
Dim.: L 47.2 x w 31.5 x h 6.5"
Weight: 25 Kg/55 lbs.
Colour: grey

Pallet covers
see p. 92



Maestro Pallets

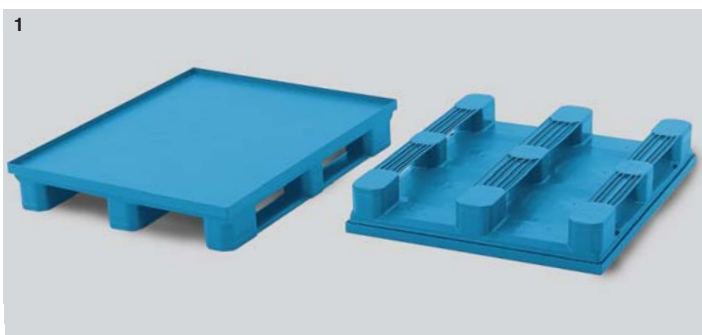
1200 x 1000

Maestro with 3 and five runners

Standard models

Pallet loading for evenly distributed load:

- dynamic: up to 1.5 tonnes
 - static: up to 5.0 tonnes
 - racking: up to 1.2 tonne
- (depending on type and configuration of load)



Ref. 3M300

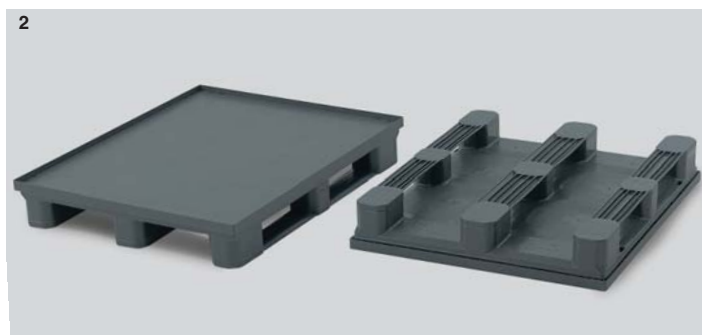
pallet with 3 runners
smooth deck
Dim.: L 1,200 x w 1,000 x h 158mm
Dim.: L 47.2 x w 39.4 x h 6.2"
Weight: 23.5 Kg/51.7 lbs., Colour: blue

Ref. 3M302

as ref. 3M300 with 7mm collar
Dim.: L 1,200 x w 1,000 x h 165mm
Dim.: L 47.2 x w 39.4 x h 6.5"

1 Ref. 3M304

minimum order item
pallet with 3 runners
smooth deck with 25mm extended collar
Dim.: L 1,220 x w 1,020 x h 183mm
Dim.: L 48.0 x w 40.2 x h 7.2"
Weight: 24 Kg/52.8 lbs., Colour: blue



Ref. 3M350

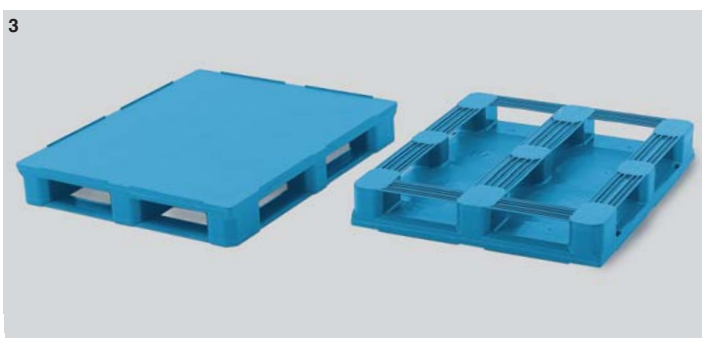
reinforced pallet with 3 runners
smooth deck
Dim.: L 1,200 x w 1,000 x h 158mm
Dim.: L 47.2 x w 39.4 x h 6.2"
Weight: 30 Kg/66 lbs., Colour: grey

Ref. 3M352

as ref. 3M350 with 7mm collar
Dim.: L 1,200 x w 1,000 x h 165mm
Dim.: L 47.2 x w 39.4 x h 6.5"

2 Ref. 3M354

minimum order item
reinforced pallet with 3 runners
smooth deck with 25mm extended collar
Dim.: L 1,220 x w 1,020 x h 183mm
Dim.: L 48.0 x w 40.2 x h 7.2"
Weight: 30.5 Kg/67.1 lbs., Colour: grey



Ref. 3M500

pallet with 5 runners
smooth deck
Dim.: L 1,200 x w 1,000 x h 158mm
Dim.: L 47.2 x w 39.4 x h 6.2"
Weight: 24.2 Kg/53.2 lbs., Colour: blue

3 Ref. 3M502

as ref. 3M500 with 7mm collar
Dim.: L 1,200 x w 1,000 x h 165mm
Dim.: L 47.2 x w 39.4 x h 6.5"

Ref. 3M504

minimum order item
pallet with 5 runners
smooth deck with 25mm extended collar
Dim.: L 1,220 x w 1,020 x h 183mm
Dim.: L 48.0 x w 40.2 x h 7.2"
Weight: 24.7 Kg/54.3 lbs., Colour: blue



Ref. 3M550

reinforced pallet with 5 runners
smooth deck
Dim.: L 1,200 x w 1,000 x h 158mm
Dim.: L 47.2 x w 39.4 x h 6.2"
Weight: 30.7 Kg/67.5 lbs., Colour: grey

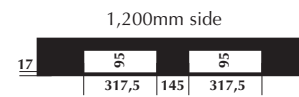
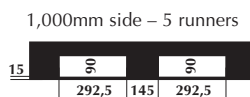
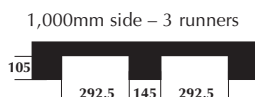
4 Ref. 3M552

as ref. 3M550 with 7mm collar
Dim.: L 1,200 x w 1,000 x h 165mm
Dim.: L 47.2 x w 39.4 x h 6.5"

Ref. 3M554

minimum order item
reinforced pallet with 5 runners
smooth deck with 25mm extended collar
Dim.: L 1,220 x w 1,020 x h 183mm
Dim.: L 48.0 x w 40.2 x h 7.2"
Weight: 31.2 Kg/68.6 lbs., Colour: grey

1200 x 1000 **Maestro**
fork entry dimensions
(dimensions in mm)





Warehouse storage: anti-slip runners for safety and security on pallet racking (ref. 3M360).

Anti-slip protection Grips, not slips

ALLi'grip Maestro is the first plastic pallet to feature anti-slip protection over the whole deck surface and under the runners as well.

- Anti-slip deck prevents loads sliding off the pallet, causing damage to the load and injury to personnel.
- Anti-slip runners limit movement should the pallet be accidentally knocked when on racking or block stacked.
- The runners also prevent the pallet from sliding on lorry decks, conveyor rollers or sloping surfaces.
- **ALLi'grip Maestro's** deck is completely smooth – an important consideration for cleanliness and hygiene.
- Ideal for use in fridges and freezers.



Secure storage on uneven surfaces.

ALLi'grip Maestro pallets

1200 x 800 – 1200 x 1000

ALLi'grip Maestro with 3 and 5 runners

Pallet loading for evenly distributed load (depending on type and configuration of load):

1200 x 800 with 3 runners

Reinforced steel core

- dynamic: up to 1,300 Kg
- static: up to 5,000 Kg
- racking: up to 1,200 Kg

1200 x 1000 with 3 and 5 runners

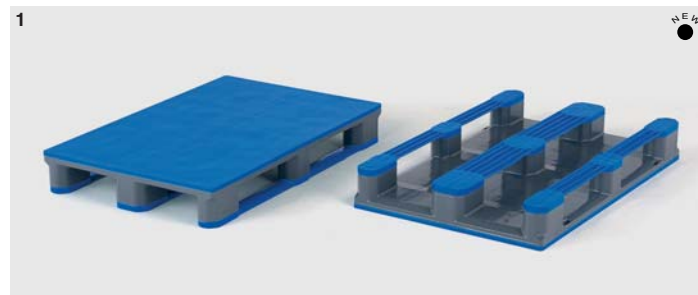
Reinforced steel core

- dynamic: up to 1,600 Kg
- static: up to 5,000 Kg
- racking: up to 1,400 Kg



Equivalent grip to plastic containers or bags as a timber pallet loaded with cardboard boxes.

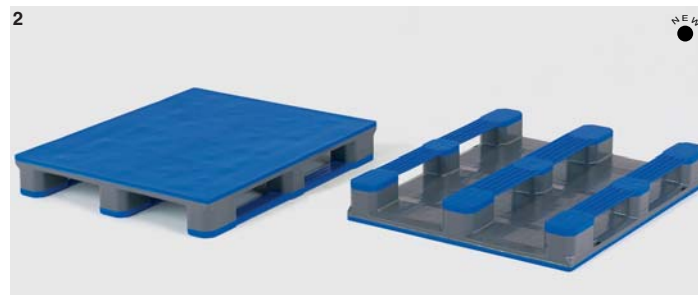
1200 x 800



1 Ref. 3L360

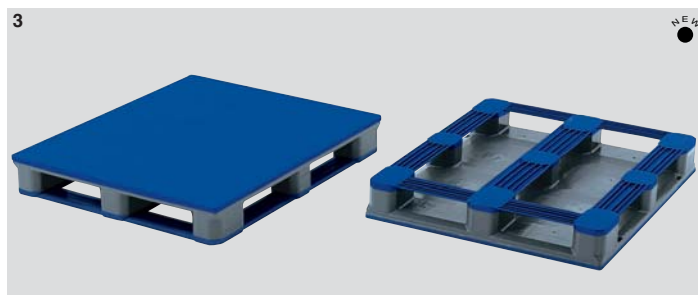
pallet with anti-slip deck and 3 runners reinforced by steel insert
 Dim.: L 1,200 x w 800 x h 158mm
 Dim.: L 47.2 x w 31.5 x h 6.2"
 Wt: 25 Kg/55 lbs.
 Colour: dark blue/grey
 Freezer grade quality

1200 x 1000



2 Ref. 3M360

pallet with anti-slip deck and 3 runners reinforced by steel insert
 Dim.: L 1,200 x w 1,000 x h 158mm
 Dim.: L 47.2 x w 39.4 x h 6.2"
 Wt: 30 Kg/66 lbs.
 Colour: dark blue/grey
 Freezer grade quality



3 Ref. 3M560

pallet with anti-slip deck and 5 runners reinforced by steel insert
 Dim.: L 1,200 x w 1,000 x h 158mm
 Dim.: L 47.2 x w 39.4 x h 6.2"
 Wt: 30.7 Kg/68 lbs.
 Colour: dark blue/grey
 Freezer grade quality

See pages 83 and 84 for fork entry dimensions

Jumbopal Pallets

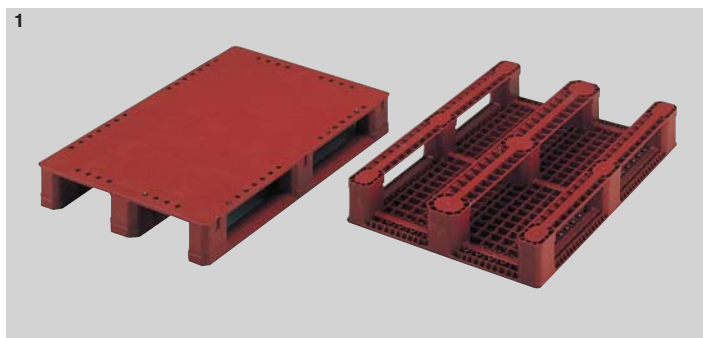
1200 x 800 – 1200 x 1000

Jumbopal pallet with feet and runners

Pallet loading for evenly distributed load:

- dynamic – feet: up to 1.5 tonnes
– runners: up to 2 tonnes
- static – feet: up to 5 tonnes
– runners: up to 5 tonnes
- racking – runners: up to 1.5 tonnes (depending on type and configuration of load)

1200 x 800mm



Ref. 32001

pallet with 9 feet ventilated deck
Dim.: L 1,200 x w 800 x h 142mm
Dim.: L 47.2 x w 31.5 x h 5.5"
Weight: 11.8 Kg/26.0 lbs.
Colour: brown-red

Ref. 32003

as ref. 32001 with 7mm collar
Height: 147mm / 5.8"
Weight: 11.9 Kg/26.2 lbs.
Colour: brown-red

Ref. 32010

pallet with 9 feet solid deck with 44 anti-slip studs
Dim.: L 1,200 x w 800 x h 142mm
Dim.: L 47.2 x w 31.5 x h 5.6"
Weight: 13.3 Kg/29.3 lbs.
Colour: brown-red

Ref. 32301

pallet with 3 runners ventilated deck
Dim.: L 1,200 x w 800 x h 156mm
Dim.: L 47.2 x w 31.5 x h 6.1"
Weight: 17.0 Kg/37.4 lbs.
Colour: brown-red

Ref. 32303

as ref. 32301 with 7mm collar
Height: 163mm / 6.4"
Weight: 17.1 Kg/37.6 lbs.
Colour: brown-red

1 Ref. 32310

pallet with 3 runners solid deck with 44 anti-slip studs
Dim.: L 1,200 x w 800 x h 158mm
Dim.: L 47.2 x w 31.5 x h 6.2"
Weight: 18.5 Kg/40.7 lbs.
Colour: brown-red

1200 x 1000mm



2 Ref. 33301

pallet with 3 runners ventilated deck
Dim.: L 1,200 x w 1,000 x h 156mm
Dim.: L 47.2 x w 39.4 x h 6.1"
Weight: 20.0 Kg/44.0 lbs.
Colour: brown-red

Ref. 33310

pallet with 3 runners solid deck with 56 anti-slip studs
Dim.: L 1,200 x w 1,000 x h 158mm
Dim.: L 47.2 x w 39.4 x h 6.2"
Weight: 21.8 Kg/48.0 lbs.
Colour: brown-red

Ref. 33303

as ref. 33301 with 7mm collar
Height: 163mm / 6.4"
Weight: 20.1 Kg/44.2 lbs.
Colour: brown-red



Ref. 33501

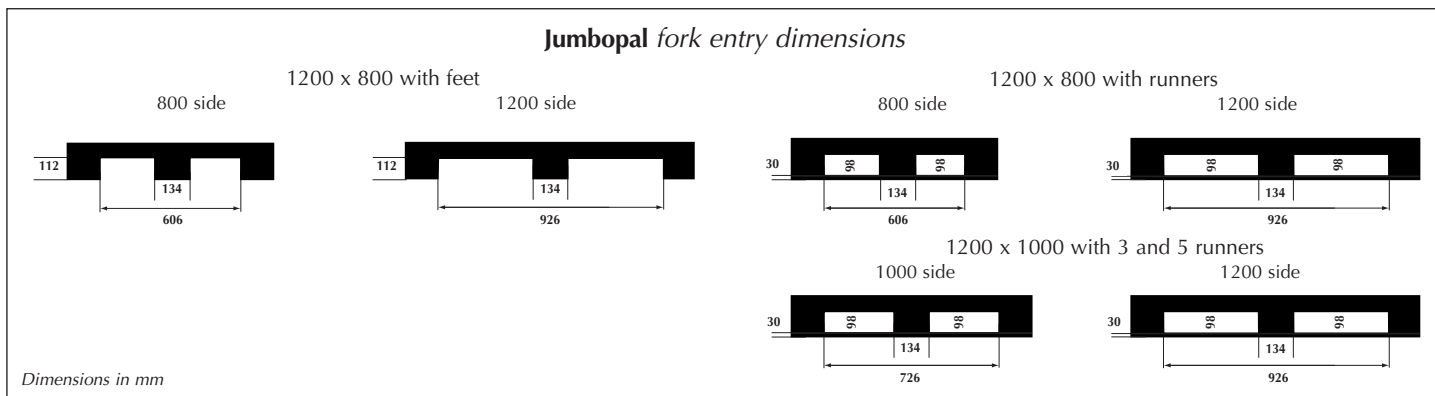
pallet with perimeter runners ventilated deck
Dim.: L 1,200 x w 1,000 x h 156mm
Dim.: L 47.2 x w 39.4 x h 6.1"
Weight: 22.8 Kg/50.2 lbs.
Colour: brown-red

Ref. 33510

pallet with perimeter runners solid deck with 56 anti-slip studs
Dim.: L 1,200 x w 1,000 x h 158mm
Dim.: L 47.2 x w 39.4 x h 6.2"
Weight: 24.6 Kg/54.1 lbs.
Colour: brown-red

3 Ref. 33503

as ref. 33501 with 7mm collar
Height: 163mm / 6.4"
Weight: 22.9 Kg/50.4 lbs.
Colour: brown-red





Distribution: strong and light for intensive trippage (ref. 3E003).

Packpal pallets

1200 x 800

Packpal with feet

Pallet loading for Packpal with nine feet - for evenly distributed load:

- dynamic: up to 500 kg.
- static: up to 1.0 tonne

(depending on type and configuration of load).

The distribution pallet

- Strong and light for intensive trippage.
- Empty pallets with 9 feet nest to 62% of overall height, saving valuable space on return transport (one stack of 34 nested pallets measures less than 2 metres).

- Packpal with perimeter runners can be used for racking evenly distributed loads of up to 350 kg.
- Strong, durable, hygienic, constant tare and unlike timber pallets they will not warp, rot or absorb moisture.



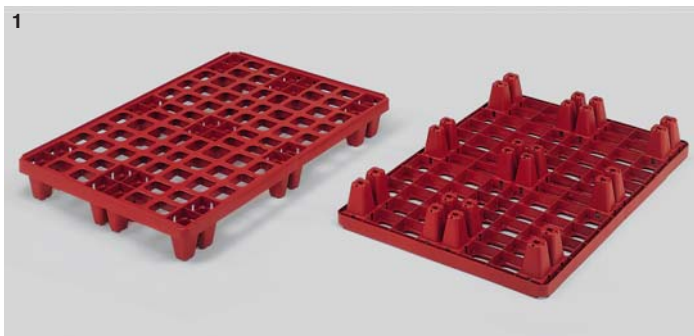
PET bottle manufacture: easy handling and optimum use of storage space (ref. 3F002).



Warehouse: Packpal with perimeter runners safely racks evenly distributed loads of up to 350 kg (ref. 3F503).

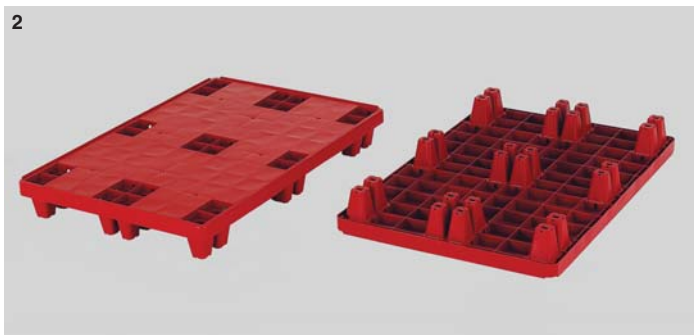


Nesting to 62%, saving valuable space on return transport.



1 Ref. 3E003

pallet with nine feet
ventilated deck with collar
Dim.: L 1,200 X w 800 X h 147 mm
Dim.: L 47.3 X w 31.5 X h 5.8"
Wt: 5.9 kg/13.0 lbs.
Colour: brown-red.



2 Ref. 3E002

pallet with nine feet
solid deck with collar
Dim.: L 1,200 X w 800 X h 147 mm
Dim.: L 47.3 X w 31.5 X h 5.8"
Wt: 7.0 kg/15.4 lbs.
Colour: brown-red.

Packpal with three runners

Pallet loading for Packpal with three runners - for evenly distributed load:

- dynamic: up to 500 kg
- static: up to 1.0 tonne

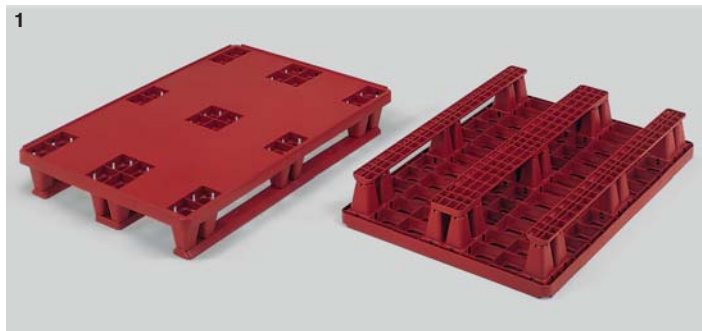
(depending on type and configuration of load).

Packpal with perimeter runners

Pallet loading for Packpal with perimeter runners - for evenly distributed load:

- dynamic: up to 1.2 tonnes
- static: up to 1.5 tonnes
- racking: up to 350 kg

(depending on type and configuration of load).

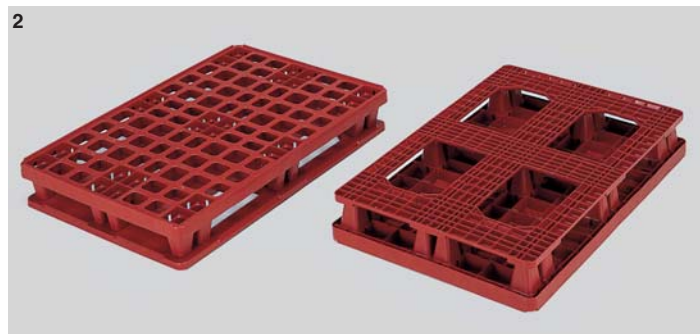


1 Ref. 3E303

pallet with three runners
ventilated deck with collar
Dim.: L 1,200 X w 800 X h 172 mm
Dim.: L 47.3 X w 31.5 X h 6.8"
Wt: 7.8 kg/17.1 lbs.
Colour: brown-red.

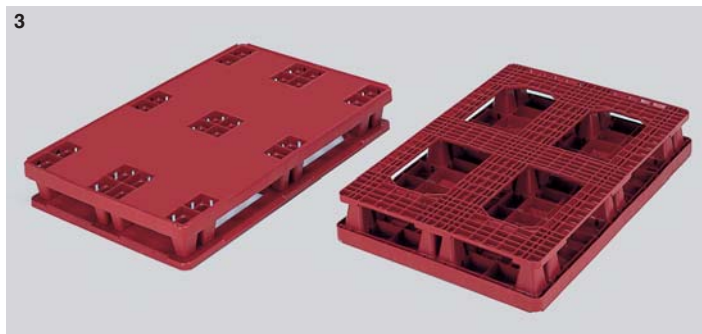
1 Ref. 3E302

pallet with three runners
solid deck with collar
Dim.: L 1,200 X w 800 X h 172 mm
Dim.: L 47.3 X w 31.5 X h 6.8"
Wt: 8.9 kg/19.6 lbs.
Colour: brown-red.



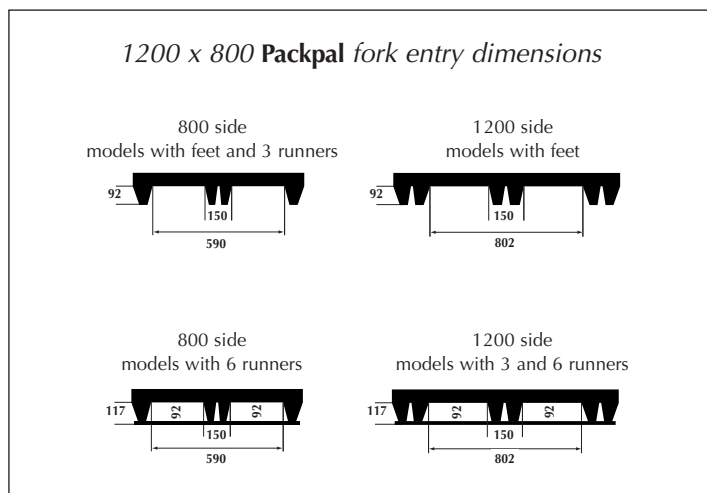
2 Ref. 3E503

pallet with perimeter runners
ventilated deck with collar
Dim.: L 1,200 X w 800 X h 172 mm
Dim.: L 47.3 X w 31.5 X h 6.8"
Wt: 8.9 kg/19.6 lbs.
Colour: brown-red.



3 Ref. 3E502

pallet with perimeter runners
solid deck with collar
Dim.: L 1,200 X w 800 X h 172 mm
Dim.: L 47.3 X w 31.5 X h 6.8"
Wt: 10.3 kg/22.7 lbs.
Colour: brown-red.



Packpal pallets

1200 x 1000

Packpal with feet

Pallet loading for Packpal with nine feet - for evenly distributed load:

- dynamic: up to 500 kg
 - static: up to 1.0 tonne
- (depending on type and configuration of load).

Packpal with three runners

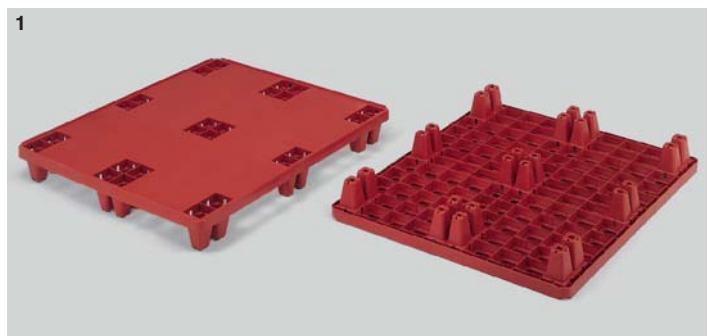
Pallet loading for Packpal with three runners - for evenly distributed load:

- dynamic: up to 500 kg
 - static: up to 1.0 tonne
- (depending on type and configuration of load).

Packpal with perimeter runners

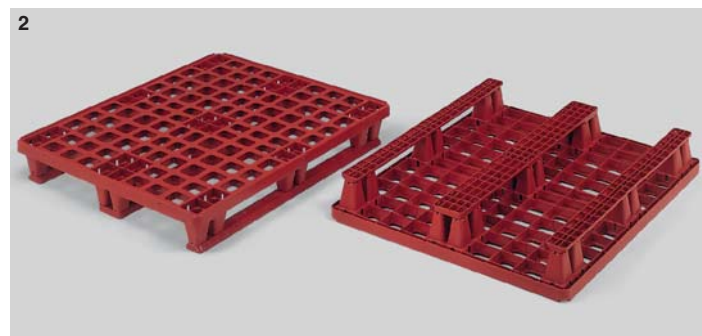
Pallet loading for Packpal with perimeter runners - for evenly distributed load:

- dynamic: up to 1.2 tonnes
 - static: up to 1.5 tonnes
 - racking: up to 350 kg
- (depending on type and configuration of load).



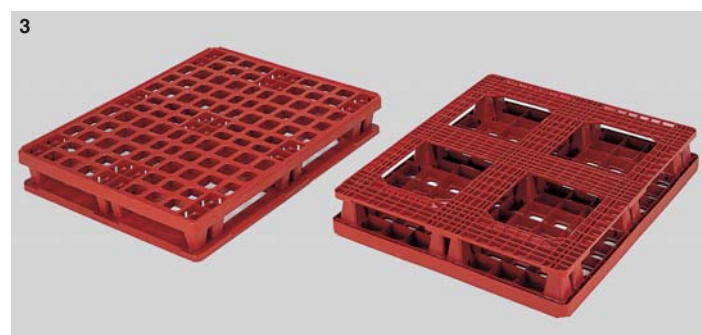
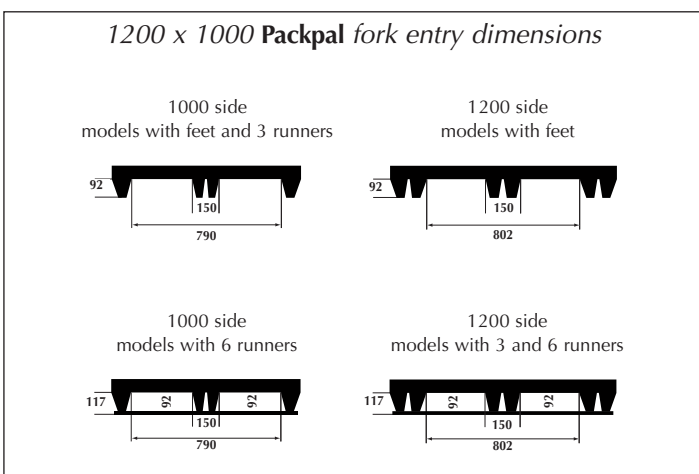
Ref. 3F003
pallet with nine feet
ventilated deck with collar
Dim.: L 1,200 X w 1,000 X h 147 mm
Dim.: L 47.3 X w 39.4 X h 5.8"
Wt: 7.3 kg/16.1 lbs.
Colour: brown-red.

1 Ref. 3F002
pallet with nine feet
solid deck with collar
Dim.: L 1,200 X w 1,000 X h 147 mm
Dim.: L 47.3 X w 39.4 X h 5.8"
Wt: 8.9 kg/19.6 lbs.
Colour: brown-red.



2 Ref. 3F303
pallet with three runners
ventilated deck with collar
Dim.: L 1,200 X w 1,000 X h 172 mm
Dim.: L 47.3 X w 39.4 X h 6.8"
Wt: 9.3 kg/20.5 lbs.
Colour: brown-red.

Ref. 3F302
pallet with three runners
solid deck with collar
Dim.: L 1,200 X w 1,000 X h 172 mm
Dim.: L 47.3 X w 39.4 X h 6.8"
Wt: 10.9 kg/24.0 lbs.
Colour: brown-red.



3 Ref. 3F503
pallet with perimeter runners
ventilated deck with collar
Dim.: L 1,200 X w 1,000 X h 172 mm
Dim.: L 47.3 X w 39.4 X h 6.8"
Wt: 11.9 kg/26.2 lbs.
Colour: brown-red.

Ref. 3F502
pallet with perimeter runners
solid deck with collar
Dim.: L 1,200 X w 1,000 X h 172 mm
Dim.: L 47.3 X w 39.4 X h 6.8"
Wt: 13.5 kg/29.7 lbs.
Colour: brown-red.

Recycled pallets

1200 x 800 – 1200 x 1000

Industrial Pallet

Tough and versatile, the Industrial Recycled Pallet is ideal for racking light loads, compatible with a wide range of conveyors and built to withstand intensive use.

Pallet loading for Industrial Recycled Pallet – for evenly distributed load:

- dynamic: up to 1.0 tonne
- static: up to 4 tonnes
- racking: up to 700 Kg (depending on type and configuration of load)

Shipping Pallet

Manufactured in recycled high density polyethylene, the Shipping Pallet provides a light weight low cost alternative to timber pallets. Ref. 3D003 nests by 70%, saving valuable space on return transport.

Pallet loading for Industrial Recycled Pallet – for evenly distributed load:

- dynamic: up to 350 tonne
- static: up to 700 Kg (depending on type and configuration of load)



1 Ref. 3P302
 pallet with 3 runners
 semi-solid deck with 6mm collar
 Dim.: L 1,200 x w 800 x h 160mm
 Dim.: L 47.2 x w 31.5 x h 6.3"
 Wt: 21 Kg/46 lbs.
 Colour: light grey
 For use in temperatures from 0° to +40°C



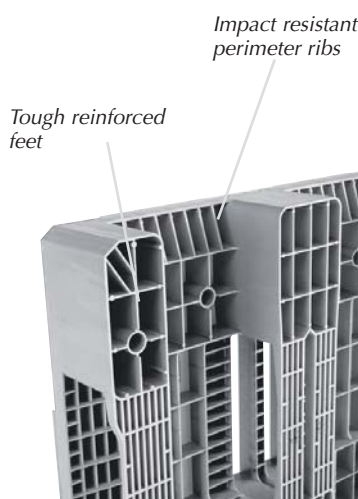
2 Ref. 3P300
 pallet with 3 runners
 semi-solid deck
 Dim.: L 1,200 x w 800 x h 160mm
 Dim.: L 47.2 x w 31.5 x h 6.3"
 Wt: 21 Kg/46 lbs.
 Colour: light grey
 For use in temperatures from 0° to +40°C



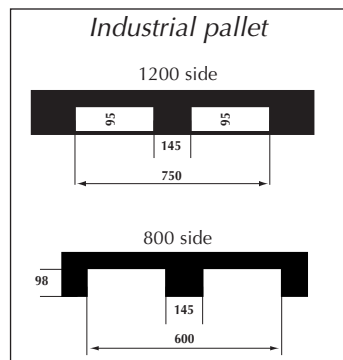
3 Ref. 3D003
 pallet with 9 feet
 ventilated deck with 5mm collar
 Dim.: L 1,200 x w 800 x h 144mm
 Dim.: L 47.2 x w 31.5 x h 5.7"
 Nested height: 45mm / 1.8"
 Wt: 7.8 Kg/17.2 lbs.
 Colour: dark grey
 Supplied in quantities of 50 pallets



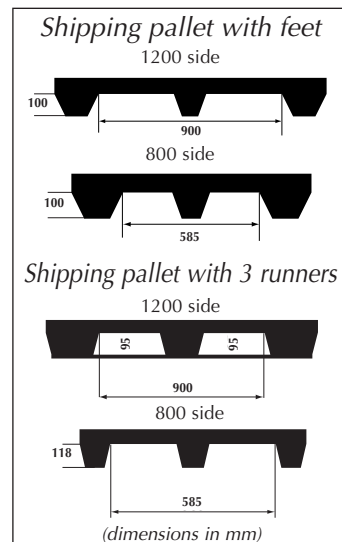
4 Ref. 3D303
 pallet with 3 runners
 ventilated deck with 5mm collar
 Dim.: L 1,200 x w 800 x h 162mm
 Dim.: L 47.2 x w 31.5 x h 6.4"
 Wt: 11.0 Kg/24.2 lbs.
 Colour: dark grey



Dimensions in mm.



Stack of 50 nested pallets (ref. 3D003).





Recypal

Pallet loading for Recypal with three runners - for evenly distributed load:

- dynamic: up to 1.0 tonne
- static: up to 4.0 tonnes
- racking: up to 500 kg (depending on type and configuration of load).



1 Ref. E3300

pallet with three runners
solid deck
Dim.: L 1,200 X w 1,000 X h 150 mm
Dim.: L 47.3 X w 39.4 X h 5.9"
Wt: 25.0 kg/55.0 lbs.
Colour: dark grey.

Ref. E3302

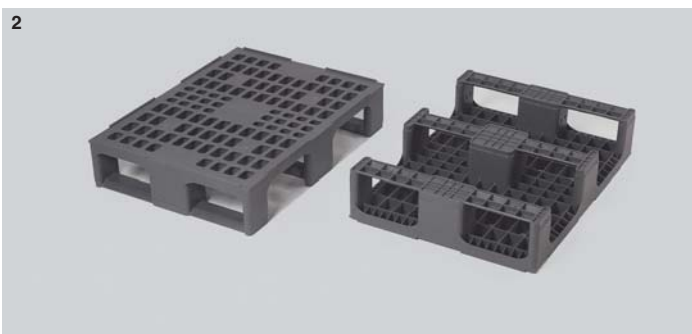
pallet with three runners
solid deck with collar
Dim.: L 1,200 X w 1,000 X h 157 mm
Dim.: L 47.3 X w 39.4 X h 6.2"
Wt: 25.2 kg/55.4 lbs.
Colour: dark grey.

800 x 600 handling unit

- Industrial distribution: supply of parts direct to work station or production line, its small size makes it easier to access than conventional 1200 x 1000mm pallets, saving valuable time unloading
- Retail distribution: compact size for in-store deliveries and ideal for point-of-sale display
- 4-way entry allows easy access by fork lifts and pallet trucks
- Optional lid, with or without adjustable straps, secures load and allows block stacking (see p. 93)
- Identification options include hot-foil printing and radio-frequency tags
- Lids include pimple-pads, for easy removal of adhesive labels, and optional label holder (see p. 93)
- Dynamic load: up to 750 Kg
- Static load: up to 2.0 tonnes (depending on type and configuration of load)

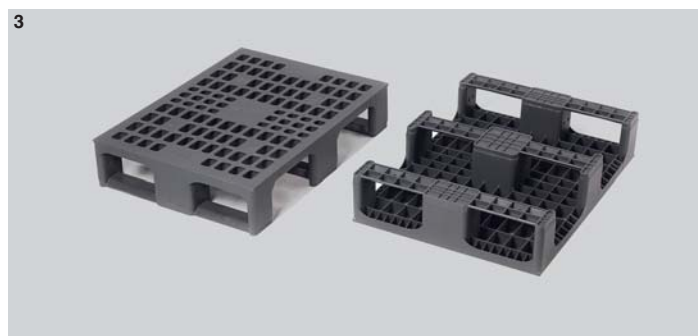
Distribution pallets

800 x 600



2 Ref. 3G303

pallet with 3 runners
ventilated deck with 7mm collar
Dim.: L 800 x w 600 x h 167mm
Dim.: L 31.5 x w 23.6 x h 6.5"
Weight: 6.2 Kg/13.6 lbs.
Colour: grey



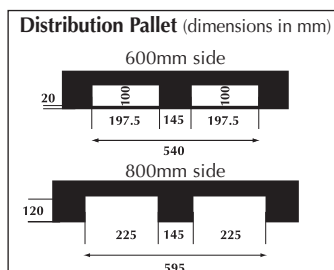
3 Ref. 3G301

as ref. 3G303 without collar
Height: 160mm / 6.3"



4 Ref. 3G305

pallet with 3 runners
ventilated deck with 20mm extended collar (collar off-set for full 800 x 600mm deck)
Dim.: L 816 x w 616 x h 180mm
Dim.: L 32.1 x w 24.3 x h 7.1"
Weight: 6.4 Kg/14.1 lbs.
Colour: grey





Easy to handle, compact and secure (pallet ref. 3F303, container ref. 21063 and lid ref. 06972).

Secure handling and distribution

- Compact, stable pallet units
- Protection to contents
- Allow secure block stacking
- Models with adjustable straps provide extra security



Pallet "safety belt" system

The pallet safety belt system provides additional security for pallet loads. A pallet cover is combined with four inertia straps to quickly and securely hold containers in place.

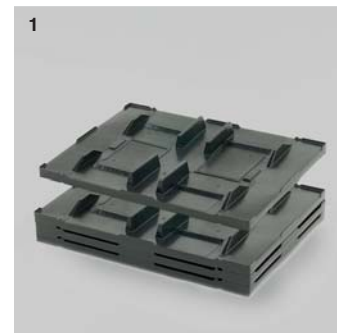
The system operates with the Universal Pallet featured on page 94.

Pallet lids

LIDS FOR 800 x 600 PALLETS



Protecting contents from rain (pallet ref. 3F503, container ref. 11065 and lid ref. 64701).



1 Ref. 06700

Polypropylene lid for 800 x 600mm Distribution Pallets (see p. 91). Compatible with Eureka, Odette and European Standard Range stacking containers.
Dim.: L 820 x w 620 x h 78mm
Dim.: L 32.3 x w 24.4 x h 3.1"
Wt: 2.1 Kg/4.6 lbs., Colour: black

LIDS FOR 1200 x 800 PALLETS



5 Ref. 64801

Lid for all 1200 x 800mm pallets with perimeter runners. Compatible with Traditional stacking & nesting containers (see p. 44 & 45).
Dim.: L 1,246 x w 846 x h 89mm
Dim.: L 49.1 x w 33.3 x h 3.5"
Wt: 5.1 Kg/11.2 lbs., Colour: light grey



6 Ref. 06800

Lid for 1200 x 800mm Packpal pallets with three runners. Compatible with Eureka, Odette and European Standard Range stacking containers.
Dim.: L 1,220 x w 813 x h 53mm
Dim.: L 48.0 x w 32.0 x h 2.1"
Wt: 3.8 Kg/8.4 lbs., Colour: black

LIDS FOR 1200 x 1000 PALLETS



11 Ref. 64701

Lid for all 1200 x 1000mm pallets with perimeter runners. Compatible with Traditional stacking & nesting containers (see p. 44 & 45).
Dim.: L 1,246 x w 1,046 x h 89mm
Dim.: L 49.1 x w 41.2 x h 3.5"
Wt: 6.0 Kg/13.2 lbs., Colour: grey



Other models, with or without adjustable straps, are available on request.



2 Ref. 06772
as ref. 06700 with adjustable straps to secure loads from 400 to 900mm high

3 Ref. 00532
label holder for lids ref. 06700 and 06772 – riveted onto lid for label: 210 x 150mm / 8.3 x 5.9"

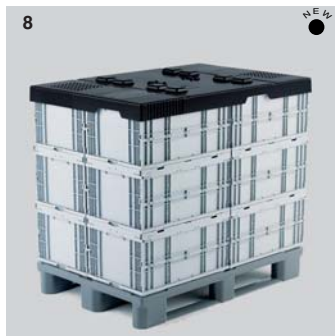


4 4 Ref. 06705
minimum order item
Polypropylene lid for 800 x 600mm pallets with perimeter runners. Compatible with Eureka, Odette and European Standard Range stacking containers.
Dim.: L 820 x w 620 x h 38mm
Dim.: L 32.3 x w 24.4 x h 1.5"
Wt: 1.8 Kg/4.0 lbs., Colour: black

Ref. 06998
minimum order item
Polypropylene lid for 800 x 600mm pallets with perimeter runners. Compatible with Odette containers.
Dim.: L 803 x w 604 x h 43mm
Dim.: L 31.6 x w 23.8 x h 1.7"
Wt: 1.6 Kg/3.5 lbs., Colour: black



7 Ref. 06840
Lid for 1200 x 800mm Maestro and Alligrip pallets with three runners. Compatible with Eureka, Odette and European Standard Range stacking containers.
Dim.: L 1,220 x w 813 x h 53mm
Dim.: L 48.0 x w 32.0 x h 2.1"
Wt: 3.8 Kg/8.4 lbs., Colour: black



8 Ref. 06850
Lid for 1200 x 800mm Maestro and Alligrip pallets with three runners. Large retaining lip depth: 76mm / 3.0"
Dim.: L 1,215 x w 814 x h 100mm
Dim.: L 47.8 x w 32.0 x h 3.9"
Wt: 4.7 Kg/10.3 lbs., Colour: black



9 Ref. 06872
Lid with adjustable straps for 1200 x 800mm Packpal pallets with three runners.
Compatible with Eureka, Odette and European Standard Range stacking containers.
Dim.: L 1,220 x w 813 x h 53mm
Dim.: L 48.0 x w 32.0 x h 2.1"
Wt: 3.8 Kg/8.4 lbs., Colour: black



10 Ref. 06805
Lid with for all 1200 x 800mm pallets with perimeter runners. Compatible with Eureka, Odette and European Standard Range stacking containers.
Dim. And weight as ref. 06872

Ref. 06871
as ref. 06805 with 4 adjustable straps.



12 Ref. 06996
Lid for 1200 x 1000mm Packpal pallets with three runners. Compatible with Eureka, Odette and European Standard Range stacking containers.
Dim.: L 1,210 x w 1,010 x h 45mm
Dim.: L 47.6 x w 39.8 x h 1.8"
Wt: 6.2 Kg/13.6 lbs.
Colour: black, green



13 Ref. 06940
Lid for 1200 x 1000mm Maestro and Alligrip pallets with three runners. Compatible with Eureka, Odette and European Standard Range stacking containers.
Dim.: L 1,210 x w 1,010 x h 45mm
Dim.: L 47.6 x w 39.8 x h 1.8"
Wt: 6.2 Kg/13.6 lbs., Colour: black



14 Ref. 06972
as ref. 06940 with 4 adjustable straps. Colour: green



15 Ref. 06991
Polypropylene lid with for all 1200 x 1000mm pallets with perimeter runners. Compatible with Eureka, Odette and European Standard Range stacking containers.
Dim.: L 1,210 x w 1,010 x h 45mm
Dim.: L 47.6 x w 39.8 x h 1.8"
Wt: 6.2 Kg/13.6 lbs., Colour: blue

Ref. 06971
as ref. 06991 with 4 adjustable straps.



Pallet Collar

- Transforms a standard 1200 x 1000mm pallet into a bulk box.
- Height can be built up in stages to suit height of contents.
- Folds flat for easy storage when not in use.



Flame edge™

- Universal pallet with Flame Edge™ technology provides superior fire redundancy.
- Economic alternative to upgrading warehouse sprinkler systems.



Ultimate hygiene

- Developed for the food and pharmaceutical industries, Biopal's smooth surfaces allow easy and thorough cleaning.
- Biopal can be frozen down to -40°C.

Other pallet ranges

Portacollar

- Fits all Allibert Buckhorn 1200 x 1000mm pallets.
- Also fits heavy duty folding bulk boxes ref. 2B721, 2B722 and 2B723 (see p.67).
- Pallet collars are built up in stages to suit size and height of contents.
- Folds flat when not in use, saving return transport costs.
- Optional cover also available



1 Ref. 3R195

minimum order item
recycled polypropylene pallet collar
Dim.: L 1,200 x w 1,000 x h 230mm
Dim.: L 47.2 x w 39.4 x h 9.1"
Colour: black
Int. height of 1 unit: 195mm / 7.7"
Int. height of 2 units: 390mm / 15.4"
Int. height of 3 units: 585mm / 23.0"
Int. height of 4 units: 780mm / 30.7"
Int. height of 5 units: 975mm / 38.4"

2

Universal pallet

- Reinforced with steel rods, the heavy-duty Universal Pallet can safely rack loads of up to 1.27 tonnes and support a static load of over 13 tonnes!
- Manufactured with Flame Edge™ fire redundancy.
- 4-way entry.
- Ventilated deck with ergonomic hand-holds for easy lifting.
- Compatible with most racking and conveyor systems.



2 Ref. 3B603

pallet with perimeter runners
semi-solid deck with 6mm collar
Dim.: L 1,219 x w 1,016 x h 141mm
Dim.: L 48.0 x w 40.0 x h 5.6"
Wt: 31 Kg/68 lbs.
Colour: black

Pallet loading for Universal Pallet – for evenly distributed load:

- dynamic: 2.260 tonnes
 - static: 13.6 tonnes
 - racking: 1,270 Kg
- (depending on type and configuration of load)

Biopal

- Pallet loadings: for evenly distributed load - depending on type and configuration of load

Ref. R1902

pallet with nine feet
solid deck with 7mm collar
Dim.: L 800 X w 600 X h 147 mm
Dim.: L 31.5 X w 23.6 X h 5.8"
Wt: 7.2 kg/15.9 lbs.
Colour: white
dynamic load: up to 400 kg/880 lbs.

3



3 Ref. R3302

pallet with two runners and three feet
solid deck with 10 mm collar
Dim.: L 1,200 X w 1,000 X h 190 mm
Dim.: L 47.2 X w 39.4 X h 7.5"
Wt: 18.0 kg/39.6 lbs.
Colour: white
dynamic load: up to 1,000 kg/2,200 lbs.

Ref. R3902

pallet with nine feet
solid deck with 10 mm collar
Dim.: L 1,200 X w 1,000 X h 150 mm
Dim.: L 47.2 X w 39.4 X h 5.9"
Wt: 15.0 kg/33.0 lbs.
Colour: white
dynamic load: up to 700 kg/1,550 lbs.



Spill control products : Safe storage, handling and distribution of hazardous liquid containers

A range of products designed to prevent costly spills and leaks of potentially dangerous liquids from storage containers. Suitable for safely handling car batteries, 200 litre drums, 1,000 litre IBC's, etc.

Spill control range:

- 100% plastic: Will not rust and is resistant to most corrosive substances.
- Economy: Low cost, maintenance-free, helps save on floor cleaning, reduces potential environmental and compensation costs and stacks to save space when not in use.
- Ergonomics: Smooth rounded designs promote hygiene and help prevent operator injury.
- Customisation: Most spill control products have large marking areas and are available in other colours depending on order quantity.
- Handling: Light-weight with four-way entry pallet base.



Liquids safely poured into drums using drum funnel (ref B9080).



Retenpal has 56 cells to contain leaks. Nests to save up to 44% of space when not in use (ref R2906).



Drum bunds have moulded decks designed for the safe handling of either two or four drums (refs QS000, WSA07, VSA07).



Retention bunds have flat removable decking grids to suit a variety of liquid containers (refs QS100, WSB07, VSB07).



IBC's (up to 1,000 litres) safely stored on IBC bund (ref. BJS00).

Spill control

Spill
control

95



DRUM FUNNEL

1 Ref. B9080

drum funnel
Ext. dim.: Ø 550 X h 130 mm
Wt: 1.9 Kg
Colour: green.



RETENPAL

17 litres – Ref. R1908

pallet with 23 separate retention cells
Ext. Dim.: L 800 x w 600 x h 225mm
static load: 800 Kg*
dynamic load: 600 Kg*
Wt: 8 Kg
Colour: green

2 35 litres – Ref. R2906

pallet with 56 separate retention cells
Ext. Dim.: L 1,200 x w 800 x h 225mm
static load: 1,500 Kg*
dynamic load: 700 Kg*
Wt: 16 Kg
Colour: green

*depending on type and configuration of load



Separate cells reduce wave effect causing splashing and spillage (ref. XS107)



RETENPACK

75 litres – Ref. XS107

pallet with 9 feet within sump
Ext. Dim.: L 860 x w 660 x h 230mm
static load: 1,500 Kg*
dynamic load: 500 Kg*
Wt: 8.3 Kg. Colour: green sump, grey pallet

*depending on type and configuration of load

1 150 litres – Ref. XS007

pallet with 9 feet within sump
Ext. Dim.: L 1,250 x w 850 x h 230mm
static load: 1,500 Kg*
dynamic load: 500 Kg*
Wt: 16.0 Kg
Colour: green sump, brown-red pallet



DRUM BUNDS

2 220 litres - Ref. QS000

moulded deck for up to 2 drums
Ext. dim.: L 1,300 X w 800 X h 380 mm
static load: 800 kg
Wt: 30.0 Kg.
Colour: green.



3 240 litres - Ref. WSA07

moulded deck for up to 4 drums
Ext. dim.: L 1,300 X w 1,300 X h 285 mm
static load: 1,600 kg
Wt: 40.0 Kg.
Colour: green.

4 450 litres - Ref. VSA07

moulded deck for up to 4 drums
Ext. dim.: L 1,300 X w 1,300 X h 445 mm
static load: 1,600 kg
Wt: 52.0 Kg.
Colour: green.



RETENTION BUNDS

5 220 litres - Ref. QS100

with one removable decking grid
Ext. dim.: L 1,300 X w 800 X h 380 mm
static load: 800 kg
Wt: 36kg.
Colour: green, black grid.



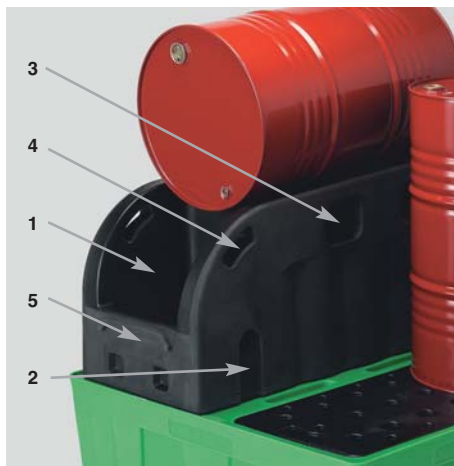
6 240 litres - Ref. WSB07

with two removable decking grids
Ext. dim.: L 1,300 X w 1,300 X h 285 mm
static load: 1,600 kg
Wt: 46.0 Kg.
Colour: green, black grids.

7 450 litres - Ref. VSB07

with two removable decking grids
Ext. dim.: L 1,300 X w 1,300 X h 445 mm
static load: 1,600 kg
Wt: 57.0 Kg.
Colour: green, black grids.

Drum dispensing stand



1 – 20 litre front well collects drips when dispensing liquid from the drum.

2 – Safe overflow from front well into main bund through side.

3 – Holes for strapping drum to stand.

4 – Ergonomic handles.

5 – Can be fitted with optional label holder.



1 Ref. FS107

Dispensing stand for 200 litre drum
Dim.: L 1,245 x w 570 x h 644mm
Dim.: L 49.0 x w 22.4 x h 25.4"
Static load: 330 Kg / 726 lbs.
Wt: 32 Kg/70 lbs., Colour: black



2 Ref. QSF00

Drum stand ref. FS107 supplied with retention bund ref. QS100



3 Ref. WSB07

Drum stand ref. FS107 supplied with retention bund ref. WSB07 (for storing two drums beside dispensing stand)



4 Ref. VSB07

Drum stand ref. FS107 supplied with retention bund ref. VSB07 (for storing two drums beside dispensing stand)

IBC bund

- 1,100 litre storage capacity retains 110% of a 1,000 litre IBC.

- Ideal for all Allibert Buckhorn IBCs (see pages 78 and 79) together with a wide range of liquids handling containers and drums.

- Maintenance-free, 100% weld-free plastic construction.

- Smooth surfaces and rounded corners for easy cleaning, free from sharp edges that could cause injury.

- Removable deck for emptying.



5 1,100 litres - Ref. BJS00

IBC bund with removable deck
Dim.: L 1,855 x w 1,855 x h 660mm
Dim.: L 73.0 x w 73.0 x h 26.0"
Static load: 2,500 Kg / 5,500 lbs.
Wt: 160 Kg/352 lbs., Colour: green, black grid



Safe liquid handling: up to 1,000 litres can be safely stored and dispensed (ref. BJS00 pictured with Allibert Buckhorn all-plastic IBC – see page 79).