

INDIC21A

| | |
|------------------|-------------------|
| Dial Action | Magnetic |
| Output Voltage | N/A |
| Output Current | N/A |
| Dial Increments | 0 to 100% |
| Operating Temp | - 40°F to + 158°F |
| Approx Wire Lead | N/A |
| X-Ref Number | 5-527 or LL-1 |

INDIC49A

| | |
|------------------|-------------------|
| AC Voltage | 240 VAC Only |
| Current | 1.0 Amp Inductive |
| Max Watts | 75 Watts |
| SPST Switch | Low Amp Triac |
| Operating Temp | - 40°F to + 158°F |
| Approx Wire Lead | N/A |
| X-Ref Number | M6253 |

INDIC238A

| | |
|------------------|--------------------|
| AC Voltage | 110 or 220V |
| Nom Resistance | 15 Ohms +/-5% |
| Wattage | 1/4 Watt |
| Output | Step Output 24 VDC |
| Operating Temp | - 40°F to + 158°F |
| Approx Wire Lead | 6 Inches |
| X-Ref Number | 5AUNS03024P |

Please pay attention to wire colors and wire order on base



INDIC824-102A

| | |
|------------------|-------------------|
| Input Voltage | 8-24 VDC |
| Output Voltage | 1-2V |
| Output Current | +/- 10ma |
| Dial Increments | 0 to 100% |
| Operating Temp | - 40°F to + 175°F |
| Wire Order L-R | Black, Blue, Red |
| Approx Wire Lead | 15 Inches |
| X-Ref Number | 5ANBS03024 |

INDIC824-106A

| | |
|------------------|-------------------|
| Input Voltage | 8-24 VDC |
| Output Voltage | 1-6V |
| Output Current | +/- 10ma |
| Dial Increments | 0 to 100% |
| Operating Temp | - 40°F to + 175°F |
| Wire Order L-R | Black, Blue, Red |
| Approx Wire Lead | 15 Inches |
| X-Ref Number | 5ANC03024 |

INDIC824-545A

| | |
|------------------|-------------------|
| Input Voltage | 8-24 VDC |
| Output Voltage | 0.5-4.5V |
| Output Current | +/- 1ma |
| Dial Increments | 0 to 100% |
| Operating Temp | - 40°F to + 175°F |
| Wire Order B-T | Red, Blue, Black |
| Approx Wire Lead | 12 Inches |
| X-Ref Number | 5AAKS03023 |

INDIC832-545A

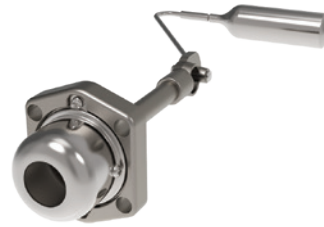
| | |
|------------------|---------------------|
| Input Voltage | 8-32 VDC |
| Output Voltage | 0.5-4.5V |
| Output Current | +/- 1ma |
| Dial Increments | E, 1/4, 1/2, 3/4, F |
| Operating Temp | - 40°F to + 175°F |
| Wire Order B-T | Red, Green, Black |
| Approx Wire Lead | 12 Inches |
| X-Ref Number | 5AAKS02770 |



MECHANICAL GAUGE

| | |
|----------------|----------|
| Dial Action | Magnetic |
| Output Voltage | N/A |
| Output Current | N/A |

| DIAMETER | PART NUMBER |
|----------|------------------|
| 6-5/8" | INDIC283A |
| 8-5/8" | INDIC111A |
| 10-3/4" | INDIC76A |
| 12-3/4" | INDIC85A |
| 14" | INDIC94A |
| 16" | INDIC102A |
| 18" | INDIC483A |
| 20" | INDIC490A |
| 24" | INDIC497A |



INDIC58A-**

| | |
|------------|-------------------|
| AC Voltage | 240 VAC Only |
| Current | 1.0 Amp Inductive |
| Max Watta | 75 Watts |

| DIAMETER | PART NUMBER |
|----------|----------------------|
| 6-5/8" | INDIC58A-658 |
| 8-5/8" | INDIC58A-858 |
| 10-3/4" | INDIC58A-1034 |
| 12-3/4" | INDIC58A-1234 |
| 14" | INDIC58A-14 |
| 16" | INDIC58A-16 |
| 18" | INDIC58A-18 |
| 20" | INDIC58A-20 |
| 24" | INDIC58A-24 |

This style also available in High Pressure model



INDIC210A-**

| | |
|---------------|----------------|
| Input Voltage | 110 or 220 V |
| Resistance | 15 Ohms |
| Output | Step 24VDC Max |

| DIAMETER | PART NUMBER |
|----------|-----------------------|
| 6-5/8" | INDIC210A-658 |
| 8-5/8" | INDIC210A-858 |
| 10-3/4" | INDIC210A-1034 |
| 12-3/4" | INDIC210A-1234 |
| 14" | INDIC210A-14 |
| 16" | INDIC210A-16 |
| 18" | INDIC210A-18 |
| 20" | INDIC210A-20 |
| 24" | INDIC210A-24 |



INDIC82412A-** INDIC82416A-**

| | | |
|----------------|----------|----------|
| Input Voltage | 8-24 VDC | 8-24 VDC |
| Output Voltage | 1-2V | 1-6V |
| Output Current | +/- 10ma | +/- 10ma |

| DIAMETER | ASSEMBLY PART NUMBER | |
|----------|-------------------------|-------------------------|
| 6-5/8" | INDIC82412A-658 | INDIC82416A-658 |
| 8-5/8" | INDIC82412A-858 | INDIC82416A-858 |
| 10-3/4" | INDIC82412A-1034 | INDIC82416A-1034 |
| 12-3/4" | INDIC82412A-1234 | INDIC82416A-1234 |
| 14" | INDIC82412A-14 | INDIC82416A-14 |
| 16" | INDIC82412A-16 | INDIC82416A-16 |
| 18" | INDIC82412A-18 | INDIC82416A-18 |
| 20" | INDIC82412A-20 | INDIC82416A-20 |
| 24" | INDIC82412A-24 | INDIC82416A-24 |



INDIC824545A-** INDIC832545A-**

| | | |
|----------------|----------|----------|
| Input Voltage | 8-24 VDC | 8-32 VDC |
| Output Voltage | 0.5-4.5V | 0.5-4.5V |
| Output Current | +/- 1ma | +/- 1ma |

| DIAMETER | ASSEMBLY PART NUMBER | |
|----------|--------------------------|--------------------------|
| 6-5/8" | INDIC824545A-658 | INDIC832545A-658 |
| 8-5/8" | INDIC824545A-858 | INDIC832545A-858 |
| 10-3/4" | INDIC824545A-1034 | INDIC832545A-1034 |
| 12-3/4" | INDIC824545A-1234 | INDIC832545A-1234 |
| 14" | INDIC824545A-14 | INDIC832545A-14 |
| 16" | INDIC824545A-16 | INDIC832545A-16 |
| 18" | INDIC824545A-18 | INDIC832545A-18 |
| 20" | INDIC824545A-20 | INDIC832545A-20 |
| 24" | INDIC824545A-24 | INDIC832545A-24 |