

TARGET

ENDEAVOUR

SUCCESS



**SHREE BHAIRAVNATH
SHIKSHAN PRASARAK MANDAL**

CHAIRMAN'S VISION

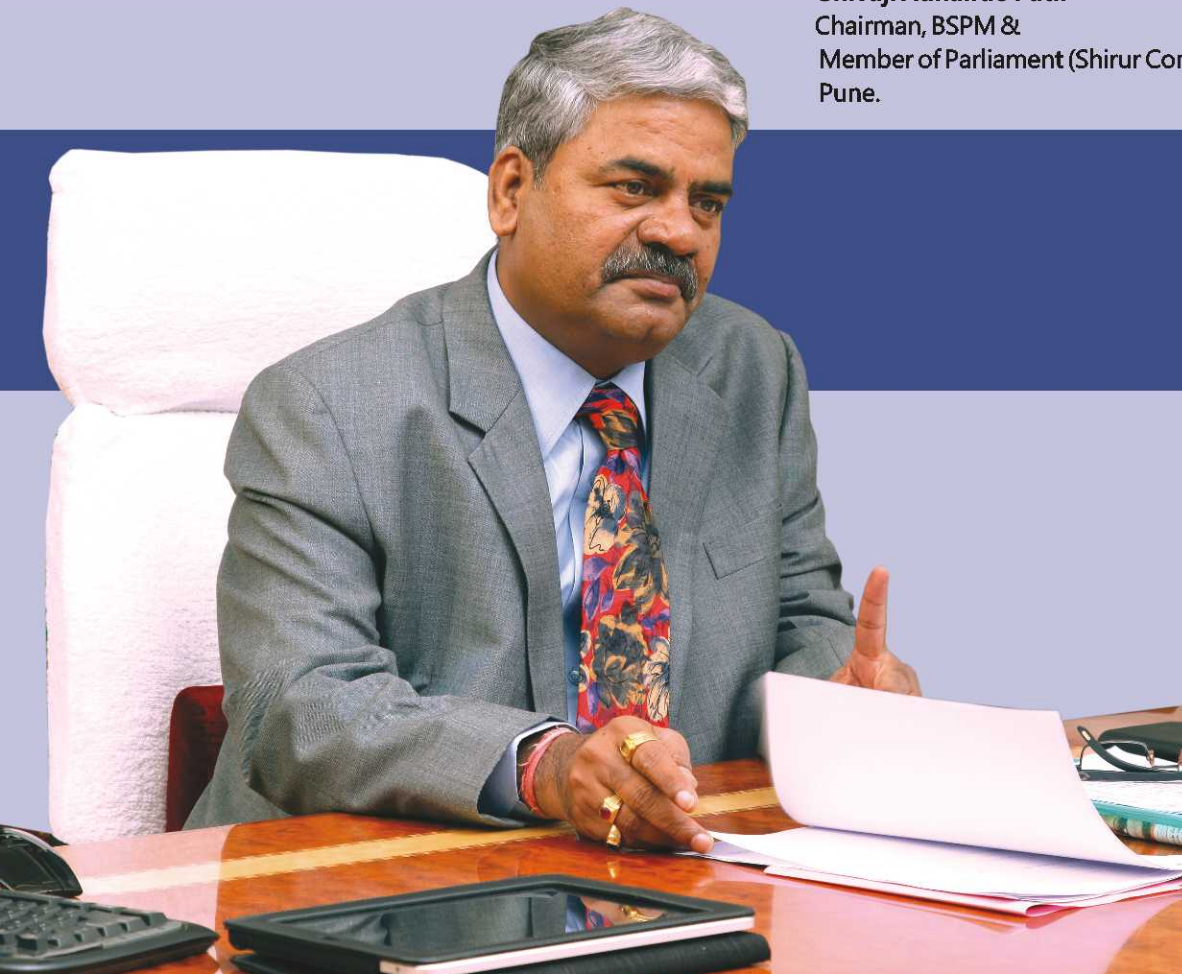
We all know that knowledge is a wealth that empowers like none other. At BSPM it is our endeavour to spread this wealth of knowledge to all. I welcome you all to BSPM on behalf of all my associates.

The vision of BSPM is to impart good quality education to all and our focus remains on the holistic development of every child to make him/her ready for the future. Our commitment to excellence helps us set outstanding teaching standards.

We constantly strive to offer the very best, in terms of education, facilities and faculty across every program we offer. Starting from school, our programs extend across various streams such as junior college upto MBA. Students at BSPM will get benefits from modern teaching methodologies, the best of infrastructure and an ideal lush green ambience.

I invite you to study the information in this brochure to know what all BSPM has to offer whether you are a prospective student, a parent, guide, counselor, a business or research partner, a community group or an international associate.

Shivaji Adhalrao Patil
Chairman, BSPM &
Member of Parliament (Shirur Constituency)
Pune.





OUR INSPIRATION

As a committed and dedicated organisation, it is our goal to maintain focus on providing accessible and quality education to prepare our students for further studies in order to achieve good careers in IT and global business economies.

Our institutions offer personal care to all students and provide an excellent academic environment. We create a dynamic, student-centred and interactive teaching learning pedagogy through an extensive use of integrated computer technology to promote individual potential.

Our endeavour is to make our institutions as an excellent learning centre in the state with good resources and expertise for continuous improvement in the quality of education so that our students get excellent placements and careers. We welcome them for a bright future ahead.

Akshay Shivajirao Adhalrao Patil

Secretary,
BSPM, Landewadi, Manchar.



MESSAGE

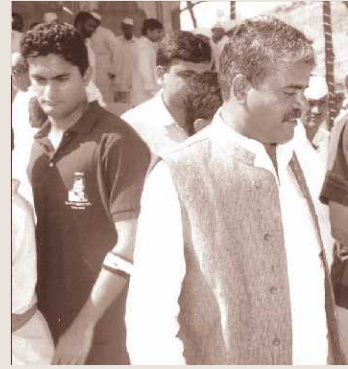
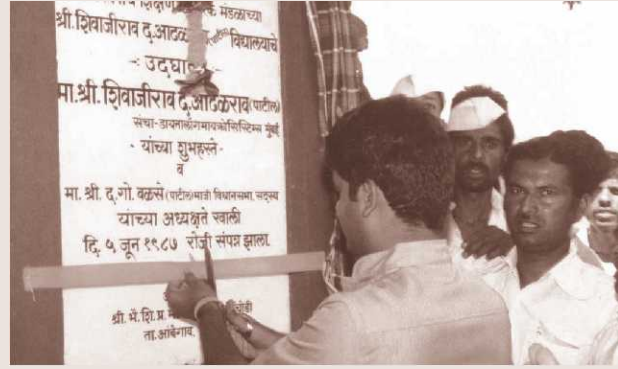
We visualize providing good quality modern education to the intelligent, enthusiastic and talented students through the use of modern techniques and pedagogy in a stress free environment to make learning a joyful, cherishable and memorable experience for them.

To nurture, nourish and promote the talent and creativity of the students by providing them best opportunities and resources to make them more resourceful, innovative, creative, competitive, co-operative, collaborative, adaptive and productive members of the ever changing global society.

To develop integrated personality of students under our educational setup leading to character building through value orientation and ultimately developing students to be good human beings, responsible citizens and leaders as a true asset to our nation.

Akhilesh B. Bhardwaj

Chief Administrator & Registrar,
BSPM, Landewadi, Manchar.



BSPM : AN EXPEDITION – IN PURSUIT OF EXCELLENCE

Manchar is a rapidly developing town on Pune – Nashik highway, nearly 63 kms. from the city of Pune. It has a religious, cultural and social heritage and also regarded as a prominent place for tourism in western ghats, mainly having places like Shivneri, Lenyadri, Ozer, Bhimashankar, Naneghat, Malshejghat etc. Manchar is also known for being the native place of the famous writer & poetess Smt. Shanta Shelke & nature poet Shri G.H. Patil.

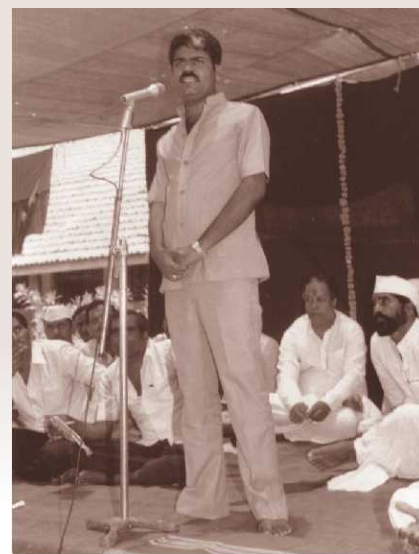
Situated close to Pune and having social, cultural, literary and spiritual background, there are lot of opportunities for development in all the sectors. Having known the importance and need for a good educational institution in the area, Hon. Shri Shivaji Adhalrao Patil, M.P., founded Shree Bhairavnath Shikshan Prasarak Mandal in 1987 at Landewadi, 6 kms from Manchar.

The founder Hon. Shri Shivaji Adhalrao Patil was born in a poor family and he completed his school education by walking 12 kms to Manchar daily. As he was well aware of the problems being faced by the students, he wanted to make arrangements for imparting education to the children of rural areas. In order to provide the best educational opportunities for the rural areas, he established a Marathi High School.

On his business tours to different countries, he realized that if we have to survive in the global competition, it is necessary to have a good and quality education system in rural areas. In 1997, New English School at Landewadi was established in a beautiful building and good infrastructure at par with any other International School. With a view to extend infrastructure & facilities for education be it schooling or professional courses under one roof, in 2008 he started B.Ed. & D.Ed colleges.

The institutions developed and grew to cater to the needs of the society. In 2009, he established the Adhalrao Patil Institute of Management & Research (APIMR) for MBA students. A new spacious building was constructed for the Pre-Primary School with the establishment of Blue Bell Prep School in 2010.

Shri Shivaji Adhalrao Patil always thought that he owed something to the society and is working on the same belief. Its best example is "Ekatomik Adivasi Vikas Prakalp & Bhairavnath Shikshan Prasarak Mandal" which has jointly taken the responsibility for imparting quality education to 100 adivasi (tribal) students to start with in 2015-16. This number is likely to increase in near future. The New English School established by him is an ideal and living example of the fact that tribal & rural students must get quality education and facilities like urban students.



A great leap forward

KALEIDOSCOPE OF BSPM INSTITUTES

Bhairavnath Shikshan Prasarak Mandal (BSPM) was established in 1987 under the leadership of Hon. Shri Shivaji Adhalrao Patil. It is a premier educational institution situated in Ambegaon Taluka, Pune, which runs world-class knowledge centers ranging from Pre-Primary School and High Schools to Junior College, D.Ed., B.Ed. & M.B.A colleges spreading across an area of approx. 25 acres on Manchar-Bhimashankar road.

These Institutions have been founded by Hon. Shri Shivaji Adhalrao Patil, an active and dynamic Member of Parliament (Shirur Constituency), an industrialist and above all a farsighted person with a good vision for a social change.

Hon. Shri Shivaji Adhalrao Patil believes that a strong educational background helps transform, not just an individual but also his family, the society and the country at large.



MISSION : 2016 – 20

1. We recognize that each child is an individual; that all children are creative; that all children need to succeed, therefore, we respect the individual needs of the children; foster a caring, peaceful, nurturing and creative environment and emphasize on the physical, intellectual, social, emotional and spiritual development of each child.
2. We assure learning experiences that will assist our students to achieve their greatest potential to adapt and adjust to a diverse and ever changing society and the diversity of gender. Physical and mental ability and cultural background is their strength to be respected.
3. To achieve 100% quality results and 100% placement of M.B.A./B.Ed./D.Ed. college students.
4. To motivate the students to imbibe values by providing equal opportunities.
5. To encourage the students to learn life skills through their involvement in the planned activities of the institution.
6. To encourage the students to enhance language, learning competency and communication skills .
7. To encourage the students to develop analytical skills and scientific temper, by developing well equipped Jr. Science and Mathematic labs.
8. Equipping class rooms with better and upgraded ICT tools.
9. Ensuring effective academic environment by motivating students to be more interactive in the classrooms.
10. To provide awareness among the students for the protection of environment by planting more trees, landscaping and green surroundings.
11. To make the students more conscious of the safety and security inside and outside the institution/campus by organizing workshops, seminars, lectures etc.
12. To empower teachers for professional development.
13. To further strengthening and promoting the teachers for the holistic development of students.
14. To establish well equipped laboratories (Physics, Chemistry & Biology) and library to start Junior College with the facility to provide coaching for IIT/Engg/Medical and other professional courses.
15. To ensure maximum participation in Maths and Science Olympiad at all levels.
16. To establish an open Mathematics laboratory to create more interest and love among students for Mathematics.
17. To invite more MNCs & corporate sectors to conduct campus interviews for our quality M.B.A. students for better placements.
18. To produce good quality teachers in B.Ed. and D.Ed. colleges who will become Nation builders.
19. To provide boarding facilities to the students, to give them more opportunities to participate in CCA and Sports and Games activities in order to facilitate them to become National and International level players / personalities.
20. To establish a museum corner in the Vidyalaya for making our premises more informative and educative.
21. To get affiliation from CBSE for NES & Junior College.

MESSAGES



Knowledge is like a flowing stream. School is the temple of knowledge. Keeping this view in mind, Our Chairman Hon. Shri Shivaji Adhalrao Patil (Member of Parliament) had a vision to set up a school in Landewadi.

While performing the sacred work of giving knowledge in this educational institution, to the students of the rural areas with maximum utilization of available resources in the vicinity, we are providing quality education to inculcate ethical and moral values.

Education is ever lasting and continuous process, which provides the academic, social, emotional and physical development through various co-curricular activities, games and sports.

While achieving the holistic development of the students, our teachers take all efforts to accomplish this task and our Chairman has always been a source of inspiration for all of us.

A dedicated and committed team work of the teachers give a unique strength to the Vidyalaya, to achieve the target of all round development of the students.

Suresh Doke

Head Master,

Shivajirao D. Adhlarao(Patil) Vidyalaya



Schooling is a crucial period of input in everyone's life. We at New English School ensure quality and holistic education at this stage, to determine the versatile personality of our students. We nurture a child to grow into a good human being with creative and critical thinking & good leadership qualities.

We emphasize on quality education with the valuable support of our patron and through our dedicated team of teachers, standard curriculum, outstanding facilities and marvelous infrastructure.

We motivate our students to reach their goals through effective and positive teaching learning process and co-curricular activities. We take care of our students to nurture and nourish their talents by providing them various opportunities in art, craft, games & sports including Horse riding and Swimming.

Smt. Shabnam Salim Momin

Principal,

New English School



Shree Bhairavnath Shikshan Prasarak Mandal is an excellent educational campus from Primary to Post Graduate and Research level for students of rural areas, established in the year 1987, under the dynamic leadership of Shri Shivaji Adhalrao Patil, Honorable Member of Parliament (Shirur Constituency), a farsighted and visionary educationist.

Adhalrao Patil Institute of Management and Research (APIMR) for MBA was established in 2009 with good infrastructure, qualified, experienced and dedicated faculty and staff.

MBA is a two years full time programme approved by AICTE, New Delhi, recognized by DTE, Mumbai and is affiliated to S. P. Pune University and our Mission is "To satisfy the ambitions of youth force who want to lead the Nation towards prosperity through techno-economic development."

The students from this institute will certainly be an asset for the organization where they work.

Dr. P. B. Kumbhar

Director, APIMR



SHIVAJI D. ADHALRAO PATIL VIDYALAYA

It is one of the leading schools having grand success legacy in rural area since 1987. For the overall development of the students, the various activities like CCA, Cultural, Games & Sports are regularly organized along with education. It is a temple of knowledge where dignity of moral values, social education & character building is done along with the building of capacity to face the challenges of real life situations.

In school, discipline, sincerity & honesty are inculcated to make a good student. In order to develop the reading & playing habits, well equipped library, good playgrounds, yoga facility are made available.

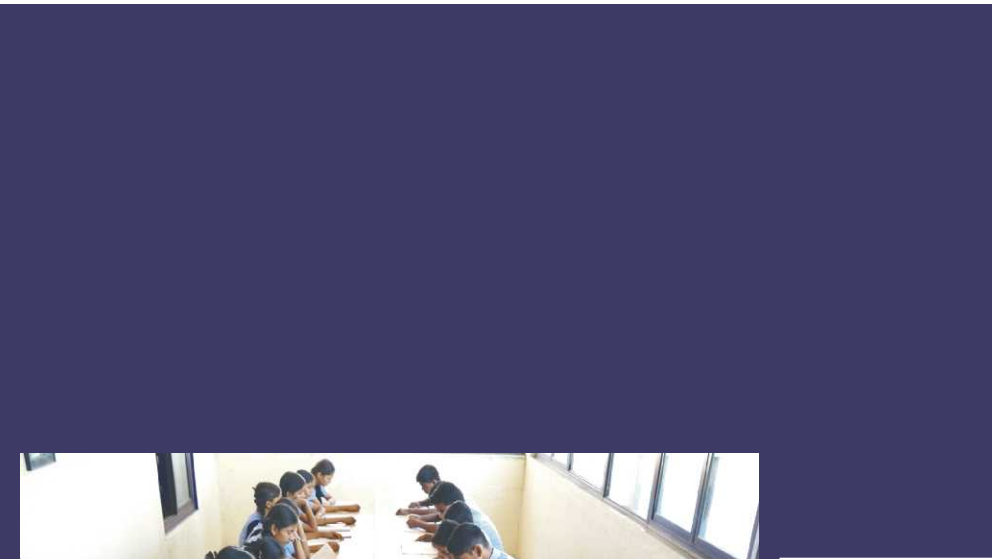
We work as a team with only one aim – i.e. Today's civilized student is the civilized & responsible citizen of tomorrow.





SDAPV provides all the facilities and well-planned activities for the holistic development of children and enable them to be vigilant citizens of Nation.







NEW ENGLISH SCHOOL

New English School is the brain child of Shri Shivaji Adhalrao Patil, Hon. M.P. and it was established in 1997 with a view to impart good quality modern education to prepare global citizens.

**Education is not preparation of life;
Education is life itself.**

- John Dewey

Inspired by the above quotation, we endeavour to provide child centered education aiming at the holistic development of the students combined with building of character so that they can lead a happy, healthy and peaceful life and also they learn how to learn.

Our school has achieved consistent success to become one of the best schools in the District due to our meticulous planning and immaculately prepared schedule.

We feel proud to mention that our school stands unique in terms of its infrastructure, co-curricular & cultural activities, playgrounds and sports facilities, good academic environment and the high standards of education.

FACULTY

Our teachers are well qualified professionals with rich experience and with a passion for teaching. They possess high level of integrity & commitment and are dedicated to their job. They are provided with good amenities that include fully furnished accommodation so as to enable them to discharge their duties with pride and pleasure. The teacher student relationship is not only confined to the classroom; students are free to consult their teachers on all matters.





LIBRARY⁷

**Libraries store the energy, That fuels the imagination,
They open up windows to the World and achieve
and Contribute to improving our Quality of life.
- Sidney Sheldon**

Inspired by the above lines N.E.S. has been successful in launching a well equipped library providing a wider scope to imagination and empowering the minds of the students to achieve better future ahead. At New English School, we have a well maintained two storeyed Library. There are near about 6211 books on various subjects. Our school library is quite spacious, with a good reading room. We ensure that each and every student comes to library class-wise as per schedule and takes the benefit. We motivate our students to inculcate the reading habits and to become avid readers as **READING MAKETH A MAN**. Many reference and resource books are also available for the teachers. This helps the teachers to update their knowledge and use it innovatively and extensively.

“Your library is your paradise” – Desiderius Erasmus





Music & Fine Arts

Music and Art refresh & nourish our soul. Hence, special emphasis has been given to nurture budding artists at NES with sessions and workshops on music, dance, art and craft. We have created a special music hall equipped with various traditional and contemporary musical instruments where students get to play the instruments and explore the intriguing world of music. Students from NES also participate in various district and state level music competitions. We also have dance, art and craft sessions to explore and develop the talents & creativity of our students.

Well Equipped Gym

Good health is the foundation of a healthy and prosperous future as "Healthy mind dwells in healthy body". Physical fitness is of prime importance along with good quality education. We at NES believe in holistic development of a child to make him future-ready and hence we have created infrastructure like spacious grounds, lawns, cricket pitch, well maintained swimming pool, gym etc. and have appointed experienced coaches, physical training experts to bring out the best in every child and cater to his physical development. Our students are outperformed contenders and have won accolades at many sports competitions and tournaments at state and national levels.

Skating

A spacious hall has been specially created for our little skate-champs where they get trained from qualified mentors. Our students also participate in various district and state level competitions.

Karate Training

Today's world is full of fear and insecurities so self-defense has become important for girls as well as boys. We at NES have made karate training a part of our curriculum to train our students to defend themselves in hostile conditions. Our qualified coaches train our students in this wonderful art of self-defense, preparing them for the future to develop a good level of self confidence.

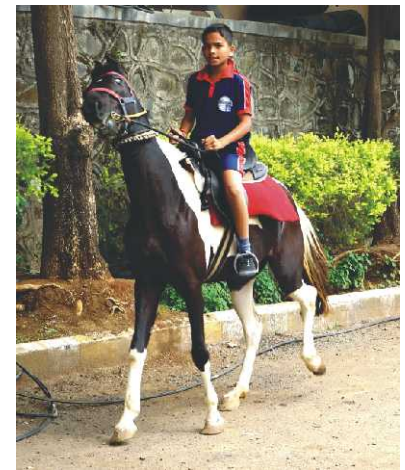


Swimming

A well maintained state-of-the-art swimming pool is specially created for training our students who are interested in swimming under the guidance of qualified trainers. Students are taught in separate batches for girls and boys.

Horse Riding

Horse riding is a sport that needs courage and strength. We at NES have made horse-riding a part of our curriculum to develop courage and build the confidence of our students under expert guidance.





Mallakhamb

It is essential to improve muscle strength and dexterity. Therefore, Rope Mallakhamb activities have been started for our school students - boys and girls. Rope Mallakhamb is the unique ancient art and exercise. Many students were benefitted during last year from these activities. Many students of our school got selected for State and National Teams and performed remarkably well.

Kabaddi

Institute has also clay field for our traditional games like khokho and kabaddi for children to excel in various sports competition and bring laurels to the school.





Running

Out side world is full of competitions. we at NES make our students ready with confidence to take part in this race through athletic activities.

Volleyball

The Institute has two natural packed clay surface volleyball courts with surrounding chain link fence. While playing volleyball, our children try to form the good records.

Badminton

A well-designed badminton lawn has been created to help students play and practice the sports in NES campus. The sport is a very good method of physical training and hence has been made a part of the extra-curricular activity.

Football

Sports and other on-ground activities play an important role in the holistic development of a child. Hence, a spacious ground with lawn is made available to the students to involve in games like football, cricket, etc. and help build a sense of unity along with fitness.

Children's Park

Large play area has been specially developed with games like slides, swings, see-saws etc. to help students relax from their study routine and participate in out-door games and sports. The pollution-free, healthy and lush green ambience of the playground adds to the fitness value of our students.



Yoga

Yoga is the best technique for students to help increase fitness and concentration. A large yoga hall in the NES campus is dedicated to regular yoga sessions to help students to be fit and active, enhance learning skills and develop the love for this ancient Indian form of exercise that is practiced world wide today and has gained global recognition.

Multi-Sensory Approach

The classrooms at NES are equipped with the contemporary digital learning system, making education 'fun and learn' experience. Our qualified teachers along with this modern learning methodology together, make learning at NES a wonderful experience.

Science Lab

Our up-to-date Science Lab is a place where students get to experience science hand-on. With well-placed apparatus and equipments necessary for students to perform all their experiments with ease, our Science Lab makes learning science an elevating experience.





Computer Labs⁷

Keeping an eye on the latest trends in education, technology and progressive learning methodologies used in today's world, we at NES have created two well-resourced air conditioned computer labs, with a set-up of more than 100 latest configured systems, hi-speed internet connectivity and strong back-up system. Multimedia facilities with LCD projectors are also installed to enhance the overall learning experience.

Our able and qualified faculty makes learning an enriching experience. We at NES constantly strive to bring out the best in our students by providing them the best of technology and latest learning materials to make them future-ready in true sense.





Happiness lies in the joy of
Achievements
and the thrill of creative efforts.

ACADEMICS

'Our School has secured 100% result in the SSC exam for the past 7 consecutive years.'

Scholarship (Maharashtra Government)

31 Students of VII std. have secured District Level Scholarship.

1 Student of VII std. has secured State Level Scholarship.

15 Students of IV std. have secured District Level Scholarship.



C.C.A.

Our students regularly take part in the Sharad Malhar Dance and Singing Competition at Pune and have occupied a place of pride.

Our students have successfully passed Government Drawing Grade Examination, Elementary and Intermediated Examination.



SPORTS

Our students have been bringing laurels to the school in various individual and team events and adding prestige to it.

Cricket

64 Students Played at District Level
20 Students Played at Zonal Level
1 Student Played at State Level
1 Student Played at National Level

Kabaddi

29 Students Played at District Level
13 Students Played at Zonal Level

Wrestling

10 Students Played at District Level

Mallakhamb / Rope Mallakhamb

5 Students Participated at District Level
2 Students Participated at Zonal Level

Football

17 Students Played at District Level
05 Students Played at Zonal Level

Dodgeball

8 Students Played at State Level

Athletics

74 Students Represented at District Level
74 Students Represented at Zonal Level

Volleyball

36 Students Played at District Level



BLUEBELL PREP SCHOOL

Blue Bell Prep School provides wonderful and holistic education for pupils.

Blue Bell Prep School believes,

“EXCEL TODAY TO LEAD TOMMOROW.”

We believe that each child is a unique, capable, talented and valued individual.

We provide a happy, caring, safe and secured environment for the tiny tots.

We believe in play way approach to learning, where children are provided with opportunities and resources through which they can explore the world around them and grow in a natural way.

Our vision at Blue Bell Prep School is to empower students to acquire, demonstrate, articulate and value knowledge and skills that will support them, as life-long learners, to participate and contribute to the global world and inculcate the core values.





INFRASTRUCTURE

We are committed to ensure the growth and happiness of our children and so we have beautiful infrastructure with well equipped classrooms and washroom facilities. The majestic background of the Sahyadri range gives a beautiful look to the school building. We have got beautiful lawn, upcoming swimming pool, play area with the quality equipments and the place for other activities to foster creativity among the kids.

Our huge play area encourages children to undertake outdoor activities and does not restrict them to the four walls of a classroom.

This is an effective tool for tiny tots to express their joy and happiness while they are in the open air playgrounds and also learn most essential values and lessons while playing games.





“Celebrate the happiness
that friends are always giving,
make every day a holiday
and celebrate just living !”





SPECIAL FEATURES⁷

Teaching staff

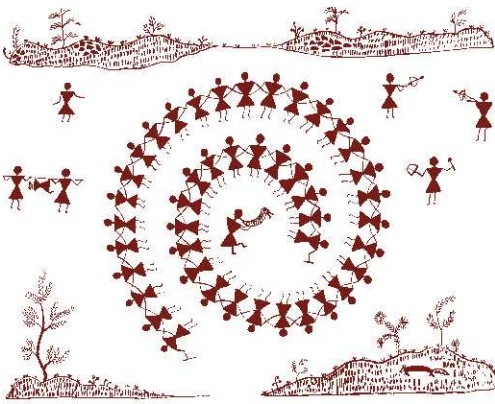
Our specifically trained teachers for Prep School distinguish themselves as a team to give personal and individualized care to each child and they have desire to learn themselves in the process of schooling and to evolve and improve the process continuously.

Our entire team of educators, teachers and assistants share a vision for the growth and enlightenment of the children.

Activities

- * Audio – Visual learning method
- * Interactive teaching method within classroom and outdoor.
- * Activities are designed to develop fine skills and sensorial development of children.
- * Role play and Puppet shows





Proposed residential setup
for adopted tribal students
(Hostel)

AADIVASI (Tribal) HOSTEL

At BSPM we understand our duties and social responsibilities and believe in giving back to the society. Hence, we have adopted 100 tribal students admitted in std I from remote areas of Pune, Ahmednagar and Palghar district. Every year we will be adopting such 100 students in std I and take care of their education till 12th std.

These are the children from the deprived sections of our society and so we are committed to give them quality modern education as well as to provide them good residential facility, Healthy diet and a good academic environment and bring them up in such a manner that they will be able to develop their personality in proper direction so that they will be easily amalgamated with the main stream of our society.





Facilities

- * Well furnished accommodation in the Hostel with all necessary basic facilities.
- * Nutritious and balanced diet inclusive of breakfast, lunch, evening snacks and dinner.
- * Aaya for each room per 6 students to take care of their personal hygiene.
- * Clean, healthy and safe environment.
- * A visiting doctor to take care of health related problems.
- * Daily use items like soaps, powder, toothbrush, toothpaste, hair oil etc. are provided every month.
- * Free school uniform, bedding items, textbooks, stationery, shoes, socks etc. are provided.

We try our level best to make these students feel comfortable in our school as for them it is a **'Second Home..... A home away from home'**.





School Conveyance Facility

Specially designed and well maintained a fleet of 25 buses are used for daily transit of teachers, students and staff from villages like Junnar, Khed, Wada, Pargaon, Narayangaon, Ghodegaon and Manchar to BSPM.

The driving staff is trained, efficient and careful and thus making everyday travel safe and comfortable for the teachers as well as for students. All safety precautions are taken by the vehicle staff enroute. All the buses have child-friendly safety doors and two teachers accompany each student batch on every journey, which ensures safety, especially for our girl students.





Consumer Forum⁷

A state-of-the-art stationery store in the campus helps our students and teachers buy all school items at reasonable prices without any problem.

Admin Department⁷

Our able and qualified admin staff supports for smooth functioning of school official works and makes available all the required material to ensure that every program is a grand success.

Admin Staff is ever ready with all kinds of resources to make teaching-learning an interesting activity.

Staff Quarters⁷

We provide furnished accommodation to our staff for happy, pleasant and comfortable stay in the campus so that they can discharge their duties without any problem.





Shree Bhimashankar B.Ed. College
Shivajirao Adhalrao Patil D.Ed. College
Shivajirao Adhalrao Patil Girls D.Ed. College

Year 2007 – Shree Bhimashankar B.Ed. College, Landewadi

Year 2007 – Shivajirao Adhalrao Patil D.El.Ed. College, Landewadi

Year 2008 – Shivajirao Adhalrao Patil Girls D.El.Ed. College, Manchar





In order to make available the educational opportunities to the students of rural areas, in 2007 & 2008 Shri Shivaji Adhalrao Patil started B.Ed. and D.El.Ed. Colleges at Landewadi & Manchar.

He has proved himself that “Marathi Manus” can touch the sky if he/she develops self confidence. He believes that “Education opens new horizon for the society”.

With the establishment of B.Ed. and D.El.Ed. colleges at Landewadi and Manchar for the students, it has been observed that the people have been transformed miraculously and the area is heading towards enormous growth and development. He has made available beautiful and well equipped administrative building, library, experienced staff, independent computer section, playground etc.

More emphasis is given on the overall development of the students, eg. health checkup, inspirational speeches by experts, different competitions, sports competitions etc. Similarly the students are guided for competitive examinations.

Education gives rise to a new person, a teacher irrespective of caste, creed or religion with a national character.





ADHALRAO PATIL Institute of Management and Research

Affiliated to Savitribai Phule Pune University & Recognised by AICTE, DTE.

With an aim of creating successful individuals in the field of management & research, APIMR (Adhalrao Patil Institute of Management & Research) was established in the year 2009. The institute is affiliated to the Savitribai Phule Pune University & recognized by AICTE, DTE. Our focus at APIMR is to give importance of higher education and learning for the socio-economic development of the individual and thereby development of the Nation.

APIMR conducts all programmes with the best use of latest technology, arranges industrial visits to impart practical education to all students and provides the best in class education.





With thoughtfully designed syllabus, qualified faculty & a comprehensive library, APIMR is an institution that nurtures talent and strives to create future leaders.

APIMR Features

1. Lush green pollution-free educational environment
2. Special training in group discussions, interview techniques & soft skills
3. Air conditioned Audio-Visual seminar hall
4. Comprehensive library
5. 100% placement assistance
6. Seminars, workshops & guest lectures, industrial visits etc.
7. Well-equipped desktop computer lab with high-speed internet connectivity & backup facility.





CULTURAL ACTIVITIES

Just to break the monotonous routine of academic work and in order to bring life to the campus, we organise our Annual Variety Entertainment Programme in which we ensure maximum participation of the students in Dance, Drama, Singing, Mimicry & fashion shows etc. to provide the opportunity to showcase our students' talents and creativity. Such programmes are organised by the students under the guidance of teachers – especially music teachers, art & craft teachers, dance teachers.

All institutions of BSPM come together and organize this mega event for four days. It's a musical and cultural treat to all the parents and guests.

The eminent personalities from various fields, Cine Stars, National / International Players, Politicians, IAS / IPS officers are invited as chief guest. Their guidance, motivation and appreciation definitely boosts the morale of our students and teachers.





PROPOSED PLANS⁷

The B.S.P.M. plans to provide various facilities in the immediate future for the convenience of students and to train students in various field to perform better at national and international level in all areas of education, games and sports.

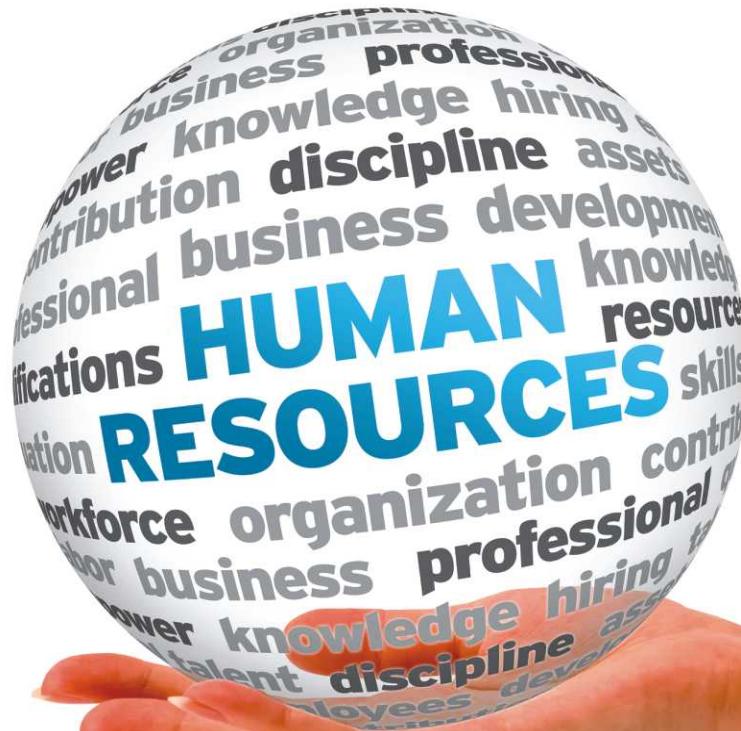
An innovative idea of a B.Ed. College Professor, Smt. Shamal Choudhary to develop a beautiful garden in the land available behind the college building has come up as a wonderful architectural garden which reflects the creativity, dedicated efforts and unremitting toil of our staff with all support from our Chairman. One herbal garden is also in the proposal.

Multipurpose Hall
with Two Badminton Courts



HUMAN RESOURCES OF BSPM ⁷

- Students = 3140
- Administrative Staff = 10
- Non Teaching Staff = 12
- Support Staff = 20
- Hostel and Canteen Staff = 26
- Teaching Staff = 100
- Office Staff = 14
- Maintenance and Gardening Staff = 9
- Drivers and Cleaners = 46





DYNALOG
(INDIA) LIMITED

SEMICONDUCTORS JUNCTION INC., USA
DYNALOG MICROSYSTEMS
DYNALOG INTERNATIONAL
ELMATRONIC DEVICES INC.



Dynalog India Ltd., an embodiment of its founder Shri Shivaji Adhalrao Patil's vision, is today one of India's leading corporates providing electronics and IT based solutions in the domains of defense, industrial automation and networking and technical education. With a rich experience of almost three decades, the organisation is closely involved with the who's who of India's engineering, PSUs, manufacturing organisations and premier educational institutes.

Aligned with the founder's philosophy of contributing to the society, Dynalog India has been instrumental in providing financial resources as well as management expertise in setting up educational and vocational institutes in rural Maharashtra. This has enabled the students of Pune district to access world class facilities in tune with the urban students. For Dynalog investing in educational infrastructure is not merely a CSR activity but a part of our organisational DNA. Dynalog India has been the financial backbone of BSPM institutes for its smooth functioning and getting infrastructural facilities.



MY NAME IS TODAY

We are guilty of many errors
And many faults.

But our worst crime
Is abandoning the children
Neglecting the fountain of life.
Many of the things we need can wait,
The child cannot.

Right now is the time his bones are being formed,
His blood is being made
And his senses are being developed.
To Him we cannot answer "TOMMORROW",
His name is "TODAY".

Gabriela Mistral

Nobel Prize winning poet from Chile



**SHREE BHAIRAVNATH
SHIKSHAN PRASARAK MANDAL**

Landewadi, Tal. Ambegaon, Dist. Pune, Tel.: 02133-235105 / 6 / 7
Email : shreebhairavnath@gmail.com, Website : www.shreebhairavnatheducation.com