

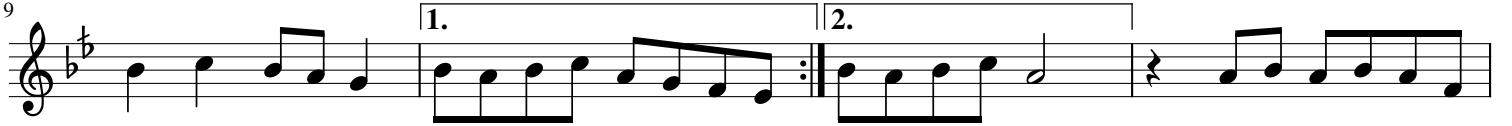
اما براوة

نجاة الصغيرة

محمد الموجي

مقام بيات الري

مقدمة موسيقية 120



41 ولا اروح أشرب حادانا قلة

Musical staff for line 41, featuring a treble clef, a key signature of two flats (B-flat and E-flat), and a 7/8 time signature. The melody consists of eighth and quarter notes.

45 حبيبي ملانه وعطشانة يانا اروحلو

Musical staff for line 45, featuring a treble clef, a key signature of two flats, and a 7/8 time signature. The melody consists of eighth and quarter notes.

49 ولا اروح أشرب حادانا اروحلو

Musical staff for line 49, featuring a treble clef, a key signature of two flats, and a 7/8 time signature. The melody consists of eighth and quarter notes.

53 ولا اروح وبلاش شقاوة أما

Musical staff for line 53, featuring a treble clef, a key signature of two flats, and a 7/8 time signature. The melody consists of eighth and quarter notes.

57 راوة راوة على الشقاوة أما

Musical staff for line 57, featuring a treble clef, a key signature of two flats, and a 7/8 time signature. The melody consists of eighth and quarter notes.

61 براوة براوة أما راوة حوار

Musical staff for line 61, featuring a treble clef, a key signature of two flats, and a 7/8 time signature. The melody consists of eighth and quarter notes.

65 حبيبي طراوة آخر طراوة حبيبي

Musical staff for line 65, featuring a treble clef, a key signature of two flats, and a 7/8 time signature. The melody consists of eighth and quarter notes.

69 لما لقاني مريت قبالو طرف شال

Musical staff for line 69, featuring a treble clef, a key signature of two flats, and a 7/8 time signature. The melody consists of eighth and quarter notes.

73 شالي وسقاني وطرف شاله طرف ل

Musical staff for line 73, featuring a treble clef, a key signature of two flats, and a 7/8 time signature. The melody consists of eighth and quarter notes.

77 عيني يا عيني بس بهداوة أما

Musical staff for line 77, featuring a treble clef, a key signature of two flats, and a 7/8 time signature. The melody consists of eighth and quarter notes.

81 براوة براوة على الهداوة أما

Musical staff for line 81, featuring a treble clef, a key signature of two flats (B-flat and E-flat), and a 7/8 time signature. The melody consists of eighth and quarter notes.

85 براوة براوة أما براوة حوار


Musical staff for line 85, featuring a treble clef, a key signature of two flats, and a 7/8 time signature. The melody consists of eighth and quarter notes.

89 حبيبي طراوة آخر طراوة يا ناس

Musical staff for line 89, featuring a treble clef, a key signature of two flats, and a 7/8 time signature. The melody consists of eighth and quarter notes.

مقام صبا الري

93 لموني لموني ما ترحموني أحب

Musical staff for line 93, featuring a treble clef, a key signature of two flats, and a 7/8 time signature. The melody consists of eighth and quarter notes.

97 لوم العوازل لما يلوموني يا ناس

Musical staff for line 97, featuring a treble clef, a key signature of two flats, and a 7/8 time signature. The melody consists of eighth and quarter notes.

101 لموني لموني ما ترحموني أحب

Musical staff for line 101, featuring a treble clef, a key signature of two flats, and a 7/8 time signature. The melody consists of eighth and quarter notes.

105 لوم العوازل لما يلوموني واننا و

Musical staff for line 105, featuring a treble clef, a key signature of two flats, and a 7/8 time signature. The melody consists of eighth and quarter notes.

مقام بيت الري

109 حبيبي يا عيني حلوين حلاوة أما

Musical staff for line 109, featuring a treble clef, a key signature of two flats, and a 7/8 time signature. The melody consists of eighth and quarter notes.

113 براوة براوة على الحلاوة أما

Musical staff for line 113, featuring a treble clef, a key signature of two flats, and a 7/8 time signature. The melody consists of eighth and quarter notes.

117 براوة براوة أما براوة حوار

Musical staff for line 117, featuring a treble clef, a key signature of two flats, and a 7/8 time signature. The melody consists of eighth and quarter notes.

121 و بحلم
طـراوة طـراوة آخر
حبيبي
مقام رست الدو

125 غني لحيبي وفين حبيبي مـليش

129 حباب يا عيني أنا نصيبي 1. نصيبي 2.

133 العداوة بعد يصلحني زمني يمكن
مقام بيات الري

137 وأقول يا ليلي يا عيني أما تراوة

141 أما براوة براوة أما براوة

145 دوار حبيبي طـراوة آخر طـراوة

149