

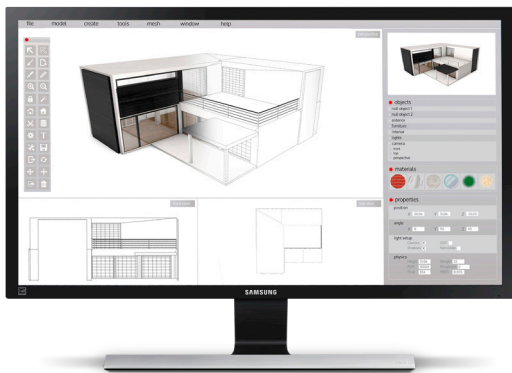
Desktop monitor protection.

Samsung monitors offer vivid displays and advanced connectivity for a full spectrum of enterprises and budgets. Keep them in working order with Samsung ProCare technology protection. It goes above and beyond the factory warranty, and provides technical support from Samsung-authorized experts. Reduce downtime and be back up and running quickly. Just call 1-866-SAM4BIZ.

Service solution for these vertical markets:

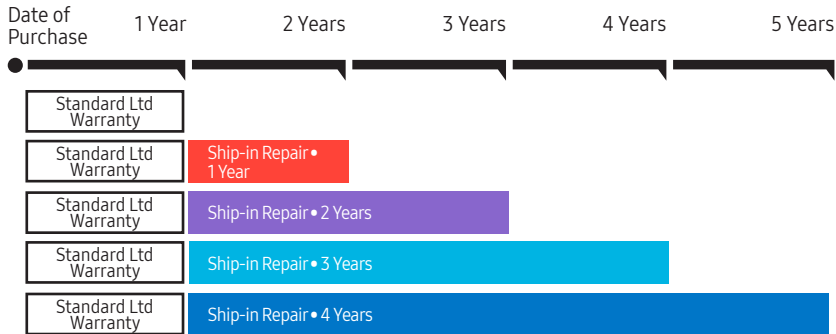
Retail | Hospitality | Education | Healthcare | Government | Financial

Samsung ProCare Technology Protection



Ship-in Repair, 1-year Standard Limited Warranty

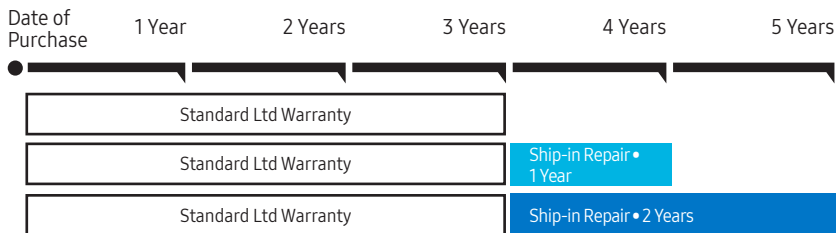
- Coverage for mechanical/electrical breakdown¹
- Ship-in service with pre-paid shipping label provided
- 5-7 business day turnaround
- 2-5 year total terms² available



Price Band (MSRP) ³	Total Term ²	Part Number
\$0 - \$299.99	2 Years	P-LM-1C3X23C
	3 Years	P-LM-2C3X23C
	4 Years	P-LM-3C3X23C
\$300 - \$499.99	2 Years	P-LM-1C3X26C
	3 Years	P-LM-2C3X26C
	4 Years	P-LM-3C3X26C
\$750 - \$999.99	2 Years	P-LM-1C3X30C
	3 Years	P-LM-2C3X30C
	4 Years	P-LM-3C3X30C
\$1,000 - \$1999.99	2 Years	P-LM-1C3X320
	3 Years	P-LM-2C3X320

Ship-in Repair, 3-year Standard Limited Warranty

- Coverage for mechanical/electrical breakdown¹
- Ship-in service with pre-paid shipping label provided
- 5-7 business days turnaround
- 4-5 year total terms⁴ available



Price Band (MSRP) ³	Total Term ⁴	Part Number
\$0 - \$299.99	4 Years	P-LM-1C3X23A
	5 Years	P-LM-2C3X23A
\$300 - 499.99	4 Years	P-LM-1C3X26A
	5 Years	P-LM-2C3X26A
\$500 - \$999.99	4 Years	P-LM-1C3X30A
	5 Years	P-LM-2C3X30A
\$1,000 - \$1999.99	4 Years	P-LM-3C3X320
	5 Years	P-LM-4C3X320

Learn More samsung.com/business insights.samsung.com samsung.com/b2bmonitors
Product Support 1-866-SAM4BIZ
Follow Us youtube.com/samsungbizusa @SamsungBizUSA

©2018 Samsung Electronics America, Inc. Samsung is a registered mark of Samsung Electronics Corp., Ltd. Specifications and design are subject to change without notice. Non-metric weights and measurements are approximate. Simulated screen images. All brand, product, service names and logos are trademarks and/or registered trademarks of their respective manufacturers and companies. See samsung.com for detailed information. In all states, the Obligor of the Elite Plus device exchange program is Federal Warranty Service Corporation, except in Florida where the Obligor is United Service Protection, Inc., and in Oklahoma where the Obligor is Assurant Service Protection, Inc. Printed in USA. MON-MONITORWARRANTYFLYER-MAY18T

¹Labor-only coverage for mechanical electrical breakdown is covered from the date of purchase. Both parts and labor costs are covered after the manufacturer's warranty expires through the plan term. ²Total term includes one year of standard limited warranty. ³Plans are sold based on MSRP or price end-user paid, whichever is less. ⁴Total term includes three years of standard limited warranty. Product may be replaced with a new or remanufactured product of similar features and functionality, if it cannot be repaired, the cost of repair exceeds the original purchase price, or parts are no longer available. In TX, the Obligor of the service plan is Federal Warranty Service Corporation. Refer to the service contract for complete details, including limitations, exclusions and provider information.