

# When and how to tap into multi-cloud synergies with SAP and MuleSoft

Businesses can break down silos and create connected experiences across applications and processes by upgrading and integrating core ERP, CRM, MDW and EDW platforms.

Our clients are realizing the benefits of applying a multi-cloud mindset to drive the success of their enterprise transformation initiatives.

If you're a large corporation that has or is considering SAP as your ERP system and MuleSoft as your integration platform, you can utilize the strengths of both SAP Business Technology Platform (BTP)\* and MuleSoft to most effectively and seamlessly integrate applications across the business.

We've assembled the decision tree below to assist our clients in starting to think through the most optimal solution for common on-premise, cloud, or hybrid cloud (on-premise & cloud) integration scenarios, informed by insights from several global use cases.

## How can this decision tree help?

- Can be leveraged by enterprise architecture to make consistent integration decisions
- Takes advantage of MuleSoft's strengths vs SAP's built-in strengths

## Why use SAP BTP for SAP to SAP integration?

- SAP applications are native to the same system and speak the same language, which allows easy integration directly
- Reduces time to market through existing templates and SAP to SAP connectors (including SAP SaaS connectors)
- Improves performance because integrations are optimized to function with the SAP stack
- Reduces license costs if SAP BTP is included in your SAP license

## Why use MuleSoft for 3rd party integrations?

- MuleSoft offers industry leading integration patterns, accelerators, and connectors
- MuleSoft enables reusability through API-led connectivity
- Reduces time to market by using MuleSoft's patented API-led approach
- Improves performance through MuleSoft's autoscaling functionality when integrating non-SAP platforms
- Reduces total cost of ownership over time by utilizing reusable APIs

\*SAP BTP consists of SAP Cloud Platform Integration, Open + Cloud Connectors, and SAP Event Mesh

# SAP BTP and/or MuleSoft?

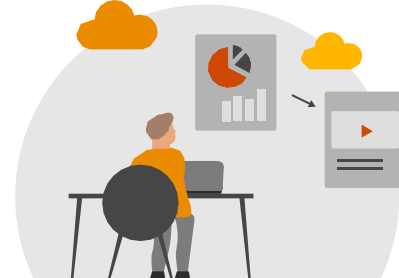
Start the journey to find out which solution is right for your needs



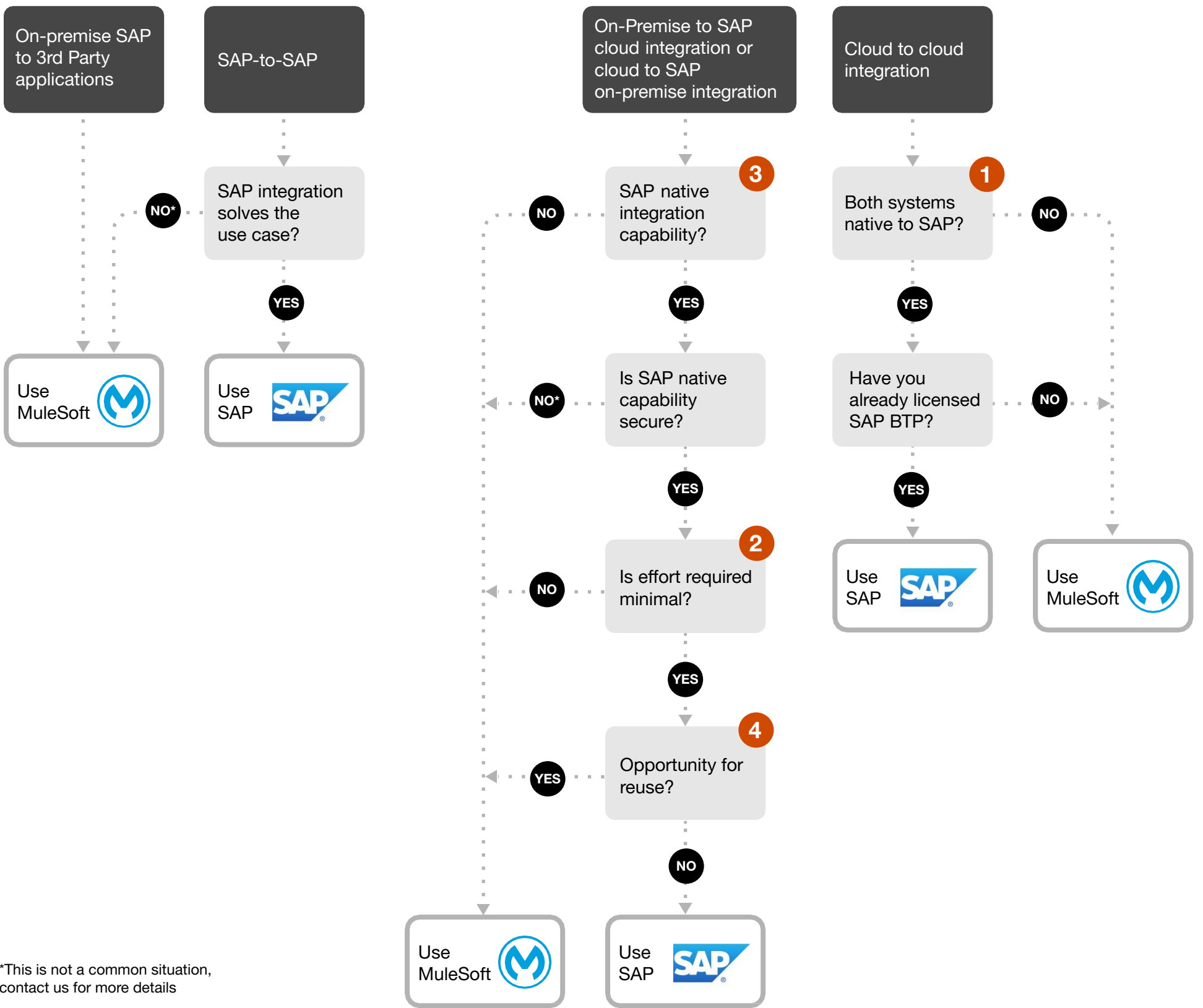
## Identify your integration platform scenarios



On-premise



Cloud & Hybrid



### Case in point

An international food safety company undertook a **complete replacement and consolidation of their various global ERP systems to a new SAP S/4HANA platform**. PwC defined an **integration approach** that would help generate value in the long-term by helping to **increase revenue, reduce costs**, increase market share, increase profitability, reduce capital employed, and **increase levels of overall customer satisfaction**.

1

**SAP**  
The team used the SAP integration approach for apps native to SAP



2

**MuleSoft**  
MuleSoft was used for third-party integrations where they could utilize out of the box MuleSoft connectors



### Case in point

An international consumer goods manufacturing company wanted to **transform their IT landscape** as part of a broader strategic vision to **become more customer-centric** and increase the speed in which they respond to market opportunities. PwC defined their **integration strategy**, and helped **deliver an integration / API platform to be more agile, reusable, and maintainable moving forward**.

3

**SAP**  
The team used SAP for banking integrations where there were SAP-provided templates



4

**MuleSoft**  
MuleSoft was used for customer and product integrations that were used by multiple 3rd party applications



Still unsure? Contact us to explore your integration scenarios and determine the model that best fits your objectives.