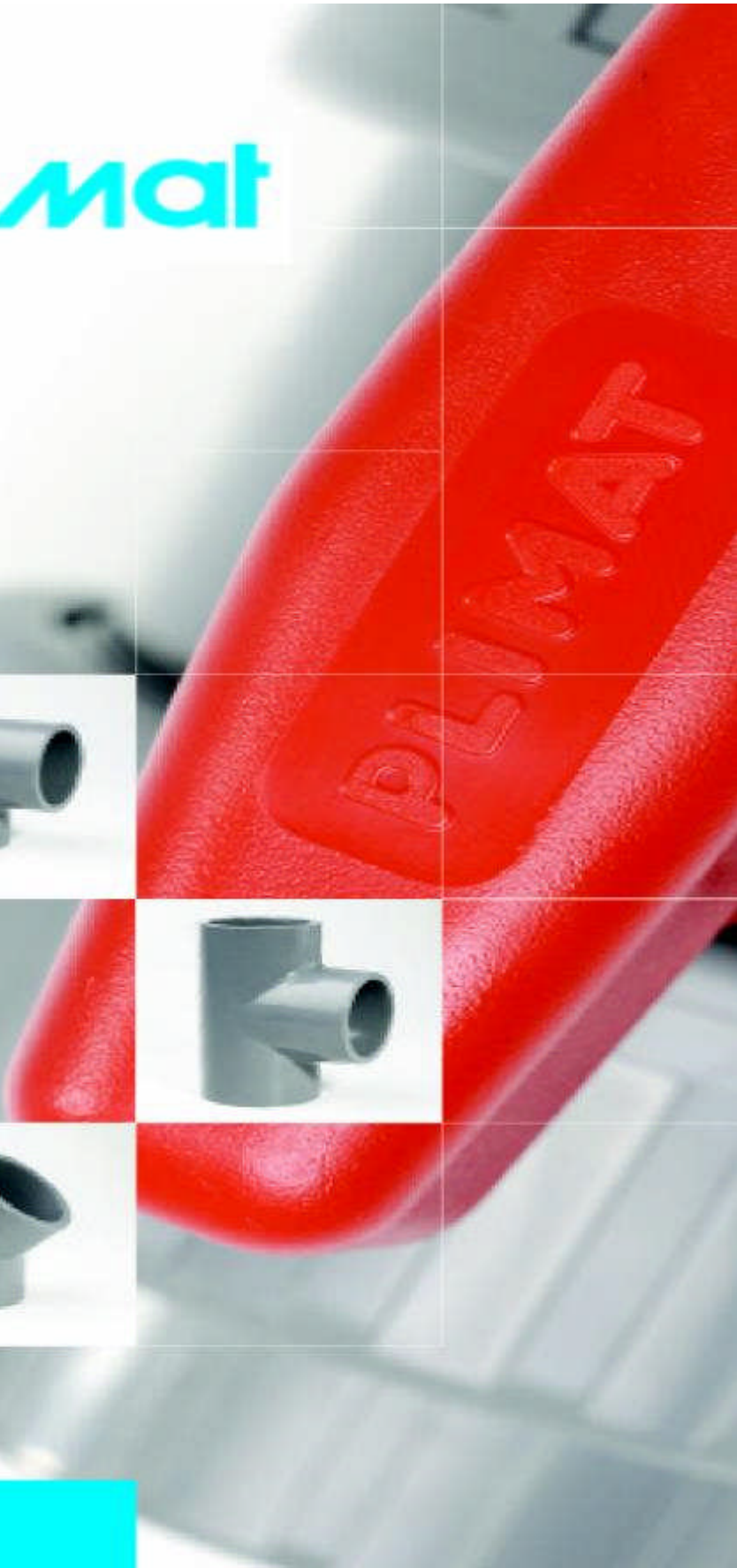


plimat



About Plimat

The Plimat Group was established in 1968 as a mould manufacturer for various industrial markets. As a technical engineering company Plimat quickly gained an unrivalled reputation of excellence which has given them an enviable customer list. Porsche, Volvo and Black & Decker and many other international companies are long term customers. Today the mould making division of Plimat is a specialist mould producer manufacturing moulds for the following industries:

- Automotive
- Electronics
- Plastics

In 1978 the Company took advantage of the opportunity to develop its own Industrial Plastic Pressure Pipe Systems. Production commenced in 1980 of PVC-U Pipe Fittings. Today Plimat produces products in a variety of materials i.e.

- ABS Pressure Pipe Fittings
- ABS Ball Valves
- PVC Pressure Pipe Fittings
- PVC Ball Valves
- PP Pressure Pipe Fittings
- PP Ball Valves
- PVC Drainage

Plimat prides itself on its quality and technical expertise as this has been the reason for the success of the Company. Plimat is one of the very few international companies who manufacture industrial pressure pipe systems from the mould making through to the finished product. Plimat in the UK has a fully staffed sales and distribution centre and it will continue to build its reputation on quality products, good service and competitive pricing.

Index

PVC-U Technical Information	3-4
PVC-U Fittings BS Inch	5-9
PVC-U Adaptor Fittings BS Inch	9-10
PVC-U Tank Connectors	11
PVC-U Fittings Threaded	12-17
PVC-U Fittings Metric	18-26
PVC-U Adaptor Fittings Metric	27-30
PVC-U Valves Manual Double Union	31-33
PVC-U Valves Manual Single Union	34
PVC-U Check Valves	35-36
PVC-U Wafer Check Valves	37
PVC- U Butterfly Valves & Kits	38
PVC-U Diaphragm Valves	39
PVC-U 3 Way Valves	40
PVC-U Actuated Valves	41-45
ABS Technical Information	46-48
ABS Fittings BS Inch	49-51
ABS Adaptor Fittings	52-54
ABS Manual Valves & Check Valves	55
ABS Actuated Valves	56
Polypropylene Compression Joint Valves	57-58
Polypropylene Manual Industrial Valves	58
Polypropylene Actuated Valves	59
Backing Rings, Bolt Sets & Gaskets	60-63
Pipe Clips	64
Cement, Cleaner, Brushes & PTFE Tape	65
PVC-U Pipe	66-67
ABS Pipe	68

Material Specifications and General information PVC-U Pressure Pipe Systems

General Information

PVC-U is one of the most widely used materials for pipe installations. It is highly suitable for both interior and exterior applications. Due to a Smooth bore it has both good flow characteristics and good resistance to abrasion. PVC-U is light to handle and can be easily jointed.

Standards

Individual Products are in accordance with the appropriate British Standards.

Fittings (inch)	EN 1452-3, BS 4346 Part 1
Fittings (metric)	DIN 8063, KIWA 54, UNI 7442/75
Threaded Fittings	BS21, DIN 2999, ISO 7/1
Solvent Cement	BS EN 1462, BS4660 Part 3, WRAS Approved
Valves	EN 1452 Part 3 Din 2999 ISO 7/1
Pipe	BS EN 1452 Part 2

Quality

Plimat's commitment to quality is reflected by our operation of an independently assessed quality management system EN ISO 9001



Material

Plimat PVC-U conforms to the EEC safety Level for Vinyl Chloride Monomer (VCM) and the water regulation for potable water.

Wras Approval



The material meets the requirements
Of the Water Regulations Advisory Scheme
for potable water.

Chemical Resistance

The chemical resistance properties of PVC-U are excellent. It is resistant to most solutions of acids, alkalis, salts and to solvents that can be mixed with water

Product	Size	Pressure
Fittings Solvent Cement	½ - 6	15 Bar (217 Psi)
Fittings Solvent Cement	8	9 Bar (130 Psi)
Fittings Threaded	½ - 4	10 Bar (145 Psi)
Valves	½ - 2	16 Bar (232 Psi)
Valves	2½ - 3	10 Bar (145 Psi)

Temperature & Pressure Relationship

Temp°C	Class C Bar	Class D Bar	Class E Bar
0	9.0	12.0	15.0
20	9.0	12.0	15.0
30	8.1	10.8	13.5
35	7.2	9.6	12.0
40	6.3	8.4	10.5
45	5.4	7.2	9.0
50	4.0	5.4	6.7
55	2.7	3.6	4.5
60	1.3	1.8	2.2

PVC-U BS Inch Solvent Cement Fittings

GOP



Elbow 90° Plain

Size	Code	£	GR
½"	PVCGOP0200	1.76	16
¾"	PVCGOP0250	2.06	26
1"	PVCGOP0320	2.83	45
1 ¼"	PVCGOP0400	4.98	76
1 ½"	PVCGOP0500	6.42	135
2"	PVCGOP0630	9.56	260
2 ½"	PVCGOP0750	17.97	332
3"	PVCGOP0900	27.51	630
4"	PVCGOP1100	41.42	1108
5"	PVCGOP1400	94.74	2086
6"	PVCGOP1600	163.51	3940
8"	PVCGOP2250	307.90	8602

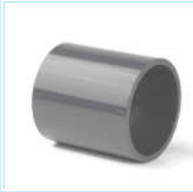
GYP



Elbow 45° Plain

Size	Code	£	GR
½"	PVCGYP0200	3.29	17
¾"	PVCGYP0250	3.45	29
1"	PVCGYP0320	4.21	47
1 ¼"	PVCGYP0400	6.04	70
1 ½"	PVCGYP0500	7.57	126
2"	PVCGYP0630	10.62	188
2 ½"	PVCGYP0750	16.74	306
3"	PVCGYP0900	25.06	498
4"	PVCGYP1100	51.49	836
5"	PVCGYP1400	87.10	1573
6"	PVCGYP1600	106.20	2965
8"	PVCGYP2250	279.71	4473

MAP



Socket Plain

Size	Code	£	GR
½"	PVCMAP0200	1.29	13
¾"	PVCMAP0250	1.45	23
1"	PVCMAP0320	1.69	35
1 ¼"	PVCMAP0400	2.99	50
1 ½"	PVCMAP0500	3.52	91
2"	PVCMAP0630	4.98	156
2 ½"	PVCMAP0750	10.54	221
3"	PVCMAP0900	19.04	371
4"	PVCMAP1100	27.67	649
5"	PVCMAP1400	54.41	1100
6"	PVCMAP1600	69.37	1682
8"	PVCMAP2250	166.29	4429

CUP



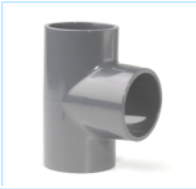
Short Radius Bend 90° Plain

Size	Code	£	GR
½"	PVCCUP0200	7.40	41
¾"	PVCCUP0250	8.71	70
1"	PVCCUP0320	12.06	116
1 ¼"	PVCCUP0400	17.21	200
1 ½"	PVCCUP0500	21.41	333
2"	PVCCUP0630	28.03	584
2 ½"	PVCCUP0750	59.94	1016
3"	PVCCUP0900	71.93	1808
4"	PVCCUP1100	119.81	2739

PVC-U BS Inch Solvent Cement Fittings

TIP

Tee 90° Plain



Size	Code	£	GR
½"	PVCTIP0200	1.99	22
¾"	PVCTIP0250	2.52	37
1"	PVCTIP0320	3.75	63
1 ¼"	PVCTIP0400	5.35	102
1 ½"	PVCTIP0500	7.71	216
2"	PVCTIP0630	12.23	351
2 ½"	PVCTIP0750	21.02	585
3"	PVCTIP0900	35.37	841
4"	PVCTIP1100	51.89	1590
5"	PVCTIP1400	136.08	2629
6"	PVCTIP1600	180.77	5087
8"	PVCTIP2250	341.29	11120

TYP

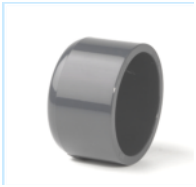
Tee 90° Plain



Size	Code	£	GR
½"	PVCTYP0200	10.61	11
¾"	PVCTYP0250	12.40	18
1"	PVCTYP0320	13.83	29
1 ¼"	PVCTYP0400	16.85	44
1 ½"	PVCTYP0500	19.14	75
2"	PVCTYP0630	29.65	129

CAP

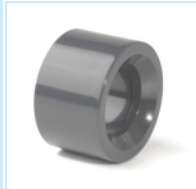
Cap Plain



Size	Code	£	GR
½"	PVCCAP0200	1.23	11
¾"	PVCCAP0250	1.45	18
1"	PVCCAP0320	1.60	29
1 ¼"	PVCCAP0400	2.52	44
1 ½"	PVCCAP0500	4.21	75
2"	PVCCAP0630	5.11	129
2 ½"	PVCCAP0750	12.46	200
3"	PVCCAP0900	15.82	320
4"	PVCCAP1100	24.37	523
5"	PVCCAP1400	41.86	897
6"	PVCCAP1600	58.90	1272

RCP

Reducing Bush Plain



Size	Code	£	GR
½" X 3/8"	PVCRCP020A	1.26	14
¾" X ½"	PVCRCP025B	1.48	21
1" X ½"	PVCRCP032B	1.95	34
1" X ¾"	PVCRCP032C	1.95	36
1 ¼" X 1"	PVCRCP040D	2.58	39
1 ½" X ¾"	PVCRCP050C	3.11	41
1 ½" X 1"	PVCRCP050D	3.11	43
1 ½" X 1 ¼"	PVCRCP050E	3.11	46
2" X 1"	PVCRCP063D	4.28	69
2" X 1 ¼"	PVCRCP063E	4.28	70
2" X 1 ½"	PVCRCP063F	4.28	71
2 ½" X 1 ¼"	PVCRCP075E	7.63	74
2 ½" X 1 ½"	PVCRCP075F	7.63	84
2 ½" X 2"	PVCRCP075G	7.63	118
3" X 1 ½"	PVCRCP090F	12.23	211
3" X 2"	PVCRCP090G	12.23	182
3" X 2 ½"	PVCRCP090H	12.23	127
4" X 2"	PVCRCP110G	16.82	424
4" X 3"	PVCRCP110I	16.82	327
5" X 4"	PVCRCP140L	48.77	563
6" X 4"	PVCRCP160L	52.15	956
8" X 6"	PVCRCP225M	111.71	2048

PVC-U BS Inch Solvent Cement Fittings

BOP

Union Plain



Size	Code	£	GR
½"	PVCBOP0200	7.63	49
¾"	PVCBOP0250	8.71	82
1"	PVCBOP0320	11.29	98
1 ¼"	PVCBOP0400	14.10	173
1 ½"	PVCBOP0500	19.24	220
2"	PVCBOP0630	24.91	379
2 ½"	PVCBOP0750	66.07	584
3"	PVCBOP0900	95.98	780
4"	PVCBOP1100	129.92	1291

PVC-U Adaptor Unions

BRP

Union Plain Female/BSP Male O Ring



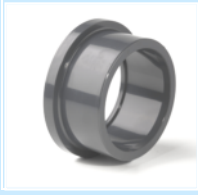
Size	Code	£	GR
1 ½" x 1 ½"	PVCBRP050F	17.87	193
1 ½" X 2"	PVCBRP050G	24.51	324
2" X 2"	PVCBRP063G	27.39	217

BOCM

Union Plain/BSP Male



Size	Code	£	GR
½"	PVCBOCM0200	7.65	36
¾"	PVCBOCM0250	9.73	60
1"	PVCBOCM0320	11.74	77
1 ¼"	PVCBOCM0400	17.15	158
1 ½"	PVCBOCM0500	20.63	277
1 ½" X 2"	PVCBOCM050G	24.36	277
2"	PVCBOCM0630	30.13	467

QRP**Stub Flange Serrated Face**

Size	Code	£	GR
1"	PVCQRP0320	2.27	29
1 ¼"	PVCQRP0400	4.13	48
1 ½"	PVCQRP0500	5.45	72
2"	PVCQRP0630	8.87	117
2 ½"	PVCQRP0750	14.48	151
3"	PVCQRP0900	17.83	289
4"	PVCQRP1100	23.51	440
5"	PVCQRP1400	48.35	750
6"	PVCQRP1600	59.71	1163
8"	PVCQRP2250	125.81	2180

FLNP**PVC-U Stub Flange Kit**

Size	Code	£	GR
1 1/2"	PVCFLNP0500	32.34	662
2"	PVCFLNP0630	42.58	980
2 ½"	PVCFLNP0750	54.17	1158
3"	PVCFLNP0900	75.49	1672
4"	PVCFLNP1100	104.38	2161
5"	PVCFLNP1400	135.94	3369
6"	PVCFLNP1600	201.48	4588
8"	PVCFLNP2250	419.91	7386

FLNP**Galvanised / PVC-U Stub Flange Kit**

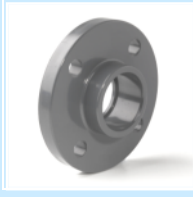
Size	Code	£	GR
1 1/2"	GMSFLNP0500	43.29	1754
2"	GMSFLNP0630	57.78	2251
2 ½"	GMSFLNP0750	74.80	3164
3"	GMSFLNP0900	97.47	3714
4"	GMSFLNP1100	124.81	4573
5"	GMSFLNP1400	184.66	5691
6"	GMSFLNP1600	222.01	8056
8"	GMSFLNP2250	436.33	11350

FFLNP**PVC -U Full Faced Flange Kit**

Size	Code	£	GR
1/2"	PVCFFLNP0200	17.12	227
3/4"	PVCFFLNP0250	17.62	302
1"	PVCFFLNP0320	18.74	413
1 1/4"	PVCFFLNP0400	28.32	540
1 ½"	PVCFFLNP0500	32.75	661
2"	PVCFFLNP0630	38.25	879
2 1/2"	PVCFFLNP0750	52.22	1190
3"	PVCFFLNP0900	69.69	1668
4"	PVCFFLNP1100	89.93	2110

PVC-U BS Inch Solvent Cement Fittings

FNP



Full Face Flange BS4504 NP10/16 Plain

Size	Code	£	GR
½"	PVCFNP0200	8.56	71
¾"	PVCFNP0250	8.71	105
1"	PVCFNP0320	9.34	160
1 ¼"	PVCFNP0400	11.06	220
1 ½"	PVCFNP0500	13.01	265
2"	PVCFNP0630	17.06	376
2 ½"	PVCFNP0750	27.34	510
3"	PVCFNP0900	30.75	693
4"	PVCFNP1100	42.68	877

FCP



Blank Flange NP10/16

Size	Code	£	GR
½"	PVCFCP0200	23.60	73
¾"	PVCFCP0250	26.86	95
1"	PVCFCP0320	29.19	135
1 ¼"	PVCFCP0400	30.75	225
1 ½"	PVCFCP0500	33.24	265
2"	PVCFCP0630	37.23	370
2 ½"	PVCFCP0750	55.75	490
3"	PVCFCP0900	65.78	630
4"	PVCFCP1100	84.63	810
6"	PVCFCP1600	148.57	1610

PVC-U Adaptor Fittings

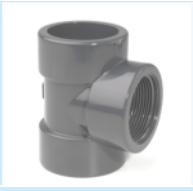
GOC



Elbow 90° Plain/ BSP Female Thread

Size	Code	£	GR
½"	PVCGOC0200	5.01	20
¾"	PVCGOC0250	5.80	35
1"	PVCGOC0320	7.17	60
1 ¼"	PVCGOC0400	14.91	90
1 ½"	PVCGOC0500	16.53	155
2"	PVCGOC0630	23.31	265
2 ½"	PVCGOC0750	38.85	400
3"	PVCGOC0900	52.63	670

TIC



Tee 90° Plain / BSP Female Thread

Size	Code	£	GR
½"	PVCTIC0200	6.46	30
¾"	PVCTIC0250	7.11	45
1"	PVCTIC0320	7.92	75
1 ¼"	PVCTIC0400	14.91	120
1 ½"	PVCTIC0500	15.71	195
2"	PVCTIC0630	24.50	335
2 ½"	PVCTIC0750	38.62	505
3"	PVCTIC0900	45.78	810

PVC-U Adaptor Fittings

MAC



Socket Adaptor Plain /BSP Female Thread

Size	Code	£	GR
½"	PVCMAC0200	4.13	16
¾"	PVCMAC0250	4.60	24
1"	PVCMAC0320	5.70	40
1 ¼"	PVCMAC0400	8.87	59
1 ½"	PVCMAC0500	10.28	110
2"	PVCMAC0630	13.39	165
2 ½"	PVCMAC0750	33.24	220
3"	PVCMAC0900	37.77	340
4"	PVCMAC1100	43.36	533

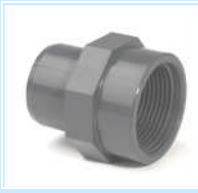
AMC



Adaptor Plain/ BSP Male Thread

Size	Code	£	GR
½"	PVCAMC0200	2.49	14
¾"	PVCAMC0250	2.88	26
1"	PVCAMC0320	4.53	40
1 ¼"	PVCAMC0400	6.16	73
1 ½"	PVCAMC0500	7.94	113
2"	PVCAMC0630	10.76	150
2 ½"	PVCAMC0750	26.79	268
3"	PVCAMC0900	31.77	476
4"	PVCAMC1100	42.82	485

AFC



PVC-U Adaptor Plain Male Spigot/BSP Female

Size	Code	£	GR
½"	PVCAFC0200	3.43	20
¾"	PVCAFC0250	4.41	25
1"	PVCAFC0320	6.12	43
1 ¼"	PVCAFC0400	7.72	65
1 ½"	PVCAFC0500	10.49	73
2"	PVCAFC0630	14.67	135
2 ½"	PVCAFC0750	35.93	225

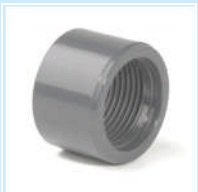
BOC



Union Plain /BSP Female Thread

Size	Code	£	GR
½"	PVCBOC0200	10.98	54
¾"	PVCBOC0250	12.15	86
1"	PVCBOC0320	15.12	112
1 ¼"	PVCBOC0400	18.44	183
1 ½"	PVCBOC0500	24.21	281
2"	PVCBOC0630	33.72	497
2 ½"	PVCBOC0750	63.44	703
3"	PVCBOC0900	98.57	891

RCC



Reducing Bush Plain/ BSP Female Thread

Size	Code	£	GR
½"X3/8"	PVCRCC020A	2.82	6
¾"X ½"	PVCRCC025B	3.36	11
1"X ¾"	PVCRCC032C	4.60	17

Tank Connectors

PVC Tank Connector



Size	Code	£	GR
½"	PVCTCC0200	5.30	14
¾"	PVCTCC0250	6.08	25
1"	PVCTCC0320	12.77	38
1 1/4"	PVCTCC0400	32.23	52
1 1/2"	PVCTCC0500	35.35	80
2"	PVCTCC0630	42.36	115
2 ½"	PVCTCC0750	55.59	197
3"	PVCTCC0900	63.60	300
4"	PVCTCC1100	95.36	560

PVC Tank Connector



Size	Code	£	GR
20x25x3/4"	PVCTCCI0200	14.90	20
25x32x1"	PVCTCCI0250	12.77	42
32x40x1 1/4"	PVCTCCI0320	13.74	66
40x50x1 3/4"	PVCTCCI0400	23.67	110
50x63x2	PVCTCCI0500	25.28	190

PVC Tank Connector BSP Thread



Size	Code	£	GR
½"	PVCTCCF0200	14.72	22
¾"	PVCTCCF0250	14.90	31
1"	PVCTCCF0320	18.50	53
1 1/4"	PVCTCCF0400	19.88	76
1 1/2"	PVCTCCF0500	23.25	120
1 1/2" X 1 3/4"	PVCTCCF050G	23.25	120
2"	PVCTCCF0630	24.37	200

PP Tank Adaptor



Size	Code	£	GR
½"	PPBTCA0200	3.71	19
¾"	PPBTCA0250	4.03	30
1"	PPBTCA0320	6.89	42
1 1/4"	PPBTCA0400	7.19	61
1 1/2"	PPBTCA0500	9.48	100
2"	PPBTCA0630	11.49	190

BNC**Barrel Nipple Plain/ BSP Male Thread**

Size	Code	£	GR
3/8"	PVCBNC0160	2.82	8
1/2"	PVCBNC0200	3.04	14
3/4"	PVCBNC0250	3.66	25
1"	PVCBNC0320	4.83	38
1 1/4"	PVCBNC0400	6.63	52
1 1/2"	PVCBNC0500	6.93	80
2"	PVCBNC0630	9.26	115
2 1/2"	PVCBNC0750	21.66	198
3"	PVCBNC0900	24.21	300
4"	PVCBNC1100	32.69	560

BFC**Composite Unions Plain/ BSP Female Brass Thread**

Size	Code	£	GR
1/2"	PVCBFC0200	POA	165
3/4"	PVCBFC0250	POA	290
1"	PVCBFC0320	POA	310
1 1/4"	PVCBFC0400	POA	450
1 1/2"	PVCBFC0500	POA	490
2"	PVCBFC0630	POA	950
2 1/2"	PVCBFC0750	POA	1357
3"	PVCBFC0900	POA	1663

BMC**Composite Union Plain /BSP Male Brass Thread**

Size	Code	£	GR
1/2"	PVCBMC0200	POA	175
3/4"	PVCBMC0250	POA	238
1"	PVCBMC0320	POA	324
1 1/4"	PVCBMC0400	POA	469
1 1/2"	PVCBMC0500	POA	595
2"	PVCBMC0630	POA	982
2 1/2"	PVCBMC0750	POA	1663
3"	PVCBMC0900	POA	2184

PGF**Hose Adaptor BSP Male Thread**

Size	Code	£	GR
1/4"	PVCPGF0140	2.98	6
1/2"	PVCPGF0200	3.57	18
3/4"	PVCPGF0250	4.65	30
1"	PVCPGF0320	5.58	47
1 1/4"	PVCPGF0400	8.10	68
1 1/2"	PVCPGF0500	9.70	116
2"	PVCPGF0630	14.98	189

PVC-U Inch Adaptors with Reinforced Metal Rings

RGOC

Elbow 90 Plain/BSP Female - Reinforcing Ring



Size	Code	£	GR
½"	PVCRGOC0200	8.20	35
¾"	PVCRGOC0250	9.20	44
1"	PVCRGOC0320	10.81	81
1 ¼"	PVCRGOC0400	20.12	120
1 ½"	PVCRGOC0500	22.42	180
2"	PVCRGOC0630	30.48	280

RTIC

Tee 90 Plain/BSP Female - Reinforcing Ring



Size	Code	£	GR
½"	PVCR TIC0200	9.86	48
¾"	PVCR TIC0250	10.62	74
1"	PVCR TIC0320	11.67	109
1 ¼"	PVCR TIC0400	20.16	154
1 ½"	PVCR TIC0500	23.32	235
2"	PVCR TIC0630	32.01	350

RMAC

Socket Plain/BSP Female - Reinforcing Ring



Size	Code	£	GR
½"	PVCRM AC0200	7.26	32
¾"	PVCRM AC0250	8.00	43
1"	PVCRM AC0320	9.33	60
1 ¼"	PVCRM AC0400	13.73	80
1 ½"	PVCRM AC0500	15.79	117
2"	PVCRM AC0630	19.72	178

RAFC

Spigot Plain/BSP Female - Reinforcing Ring



Size	Code	£	GR
½"	PVCRAF C0200	5.63	29
¾"	PVCRAF C0250	6.57	41
1"	PVCRAF C0320	8.28	60
1 ¼"	PVCRAF C0400	10.60	75
1 ½"	PVCRAF C0500	13.08	145
2"	PVCRAF C0630	17.54	180

PVC-U Threaded Fittings

GOF



Elbow 90° BSP Female Thread

Size	Code	£	GR
1/2"	PVCGOF0200	4.65	22
3/4"	PVCGOF0250	4.89	38
1"	PVCGOF0320	6.04	65
1 1/4"	PVCGOF0400	10.70	110
1 1/2"	PVCGOF0500	12.53	190
2"	PVCGOF0630	18.57	336
2 1/2"	PVCGOF0750	31.93	430
3"	PVCGOF0900	48.44	861
4"	PVCGOF1100	69.23	1287

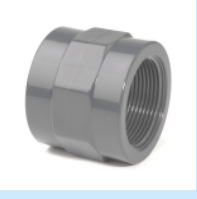
TIF



Tee 90° BSP Female Thread

Size	Code	£	GR
1/2"	PVCTIF0200	3.98	36
3/4"	PVCTIF0250	5.11	63
1"	PVCTIF0320	6.88	84
1 1/4"	PVCTIF0400	12.30	139
1 1/2"	PVCTIF0500	15.97	250
2"	PVCTIF0630	26.82	443
2 1/2"	PVCTIF0750	45.70	586
3"	PVCTIF0900	65.55	1015
4"	PVCTIF1100	109.25	1480

MAF



Socket BSP Female Thread

Size	Code	£	GR
1/2"	PVCMFAF0200	4.74	23
3/4"	PVCMFAF0250	5.51	32
1"	PVCMFAF0320	6.57	48
1 1/4"	PVCMFAF0400	9.01	73
1 1/2"	PVCMFAF0500	10.40	93
2"	PVCMFAF0630	12.76	153
2 1/2"	PVCMFAF0750	27.78	261
3"	PVCMFAF0900	35.21	369
4"	PVCMFAF1100	62.13	692

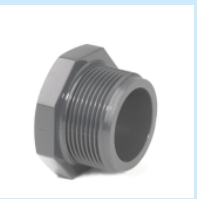
BOF



Union BSP Female Thread

Size	Code	£	GR
1/2"	PVCBOF0200	12.31	46
3/4"	PVCBOF0250	13.39	83
1"	PVCBOF0320	19.08	113
1 1/4"	PVCBOF0400	23.51	191
1 1/2"	PVCBOF0500	33.01	267
2"	PVCBOF0630	46.48	579

TAF

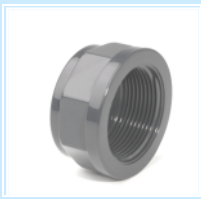


Plug BSP Male Thread

Size	Code	£	GR
1/2"	PVCTAF0200	2.83	8
3/4"	PVCTAF0250	3.29	15
1"	PVCTAF0320	4.05	20
1 1/4"	PVCTAF0400	5.51	48
1 1/2"	PVCTAF0500	6.88	69
2"	PVCTAF0630	7.41	121
3"	PVCTAF0900	30.89	210
4"	PVCTAF1100	57.47	420

PVC-U Threaded Fittings

CAF



Cap BSP Female Thread

Size	Code	£	GR
½"	PVCCAF0200	4.89	10
¾"	PVCCAF0250	5.58	15
1"	PVCCAF0320	5.88	25
1 ¼"	PVCCAF0400	6.12	48
1 ½"	PVCCAF0500	8.10	69
2"	PVCCAF0630	10.15	120
2 ½"	PVCCAF0750	30.06	210
3"	PVCCAF0900	39.95	330
4"	PVCCAF1100	45.55	614

FFF



Full Face Flange NP10/16 BSP

Size	Code	£	GR
½"	PVCFFF0200	12.97	78
¾"	PVCFFF0250	13.50	105
1"	PVCFFF0320	15.27	143
1 ¼"	PVCFFF0400	17.34	220
1 ½"	PVCFFF0500	20.24	280
2"	PVCFFF0630	26.37	380
2 ½"	PVCFFF0750	44.74	520
3"	PVCFFF0900	49.80	735
4"	PVCFFF1100	66.40	940

RIF



Reducing Piece BSP Male / Female Thread

Size	Code	£	GR
¾" x ½"	PVCRIF025B	3.90	24
¾" x 1"	PVCRIF025D	5.22	26
1" x ½"	PVCRIF032B	5.22	27
1" x ¾"	PVCRIF032C	5.22	29
1 ¼" x ½"	PVCRIF040B	6.32	43
1 ¼" x ¾"	PVCRIF040C	6.32	47
1 ¼" x 1"	PVCRIF040D	6.32	48
1 ½" x ½"	PVCRIF050B	7.63	50
1 ½" x ¾"	PVCRIF050C	7.63	53
1 ½" x 1"	PVCRIF050D	7.63	63
1 ½" x 1 ¼"	PVCRIF050E	7.63	70
1 ½" x 2"	PVCRIF050F	12.23	75
2" x ¾"	PVCRIF063C	12.23	85
2" x 1"	PVCRIF063D	12.23	88
2" x 1 ¼"	PVCRIF063E	12.23	89
2" x 1 ½"	PVCRIF063F	12.23	95
2" x 4"	PVCRIF063J	62.96	325
2 ½" x 4"	PVCRIF075J	62.96	330
3" x 4"	PVCRIF090J	62.96	350

MCF



Adaptor Piece BSP Male / Female Thread

Size	Code	£	GR
½"	PVCMCF0200	4.43	22
¾"	PVCMCF0250	5.27	37
1"	PVCMCF0320	7.18	58
1 ¼"	PVCMCF0400	8.33	76
1 ½"	PVCMCF0500	10.24	108
2"	PVCMCF0630	22.00	271

PVC-U Threaded Fittings

BAF

Barrel Nipple BSP Male Thread



Size	Code	£	GR
3/8"	PVCBAF0160	3.11	8
1/2"	PVCBAF0200	3.28	14
3/4"	PVCBAF0250	3.66	25
1"	PVCBAF0320	4.91	38
1 1/4"	PVCBAF0400	6.63	52
1 1/2"	PVCBAF0500	6.93	80
2"	PVCBAF0630	9.26	115
2 1/2"	PVCBAF0750	20.79	198
3"	PVCBAF0900	23.83	300
4"	PVCBAF1100	32.23	560

NIF

Hexagon Nipple BSP Male Thread



Size	Code	£	GR
1/2"	PVCNIF0200	2.58	9
3/4"	PVCNIF0250	2.72	11
1"	PVCNIF0320	4.67	19
1 1/4"	PVCNIF0400	6.38	30
1 1/2"	PVCNIF0500	6.93	46
2"	PVCNIF0630	8.81	106
2 1/2"	PVCNIF0750	18.85	148
3"	PVCNIF0900	27.02	320
4"	PVCNIF1100	38.39	361

NRF

Reducing Nipple BSP Male Thread



Size	Code	£	GR
3/4" x 1/2"	PVCNRF025B	3.90	17
1" x 1/2"	PVCNRF032B	4.80	23
1" x 3/4"	PVCNRF032C	5.22	26
1 1/4" x 1/2"	PVCNRF040B	6.23	29
1 1/4" x 3/4"	PVCNRF040C	6.23	31
1 1/4" x 1"	PVCNRF040D	6.23	42
1 1/2" x 1/2"	PVCNRF050B	6.71	46
1 1/2" x 3/4"	PVCNRF050C	6.71	47
1 1/2" x 1"	PVCNRF050D	6.71	51
1 1/2" x 1 1/4"	PVCNRF050E	6.71	58
2" x 1"	PVCNRF063D	10.62	86
2" x 1 1/4"	PVCNRF063E	10.62	81
2" x 1 1/2"	PVCNRF063F	10.62	82

PVC-U Threaded Fittings

NUF



Backnut BSP

Size	Code	£	GR
½"	PVCNUF0200	2.93	13
¾"	PVCNUF0250	3.11	16
1"	PVCNUF0320	5.52	30
1 ¼"	PVCNUF0400	12.25	35
1 ½"	PVCNUF0500	13.31	45
2"	PVCNUF0630	14.35	90
2 ½"	PVCNUF0750	20.99	180
3"	PVCNUF0900	23.56	235
4"	PVCNUF1100	29.69	350

RCF



Reducing Bush BSP Male / Female Thread

Size	Code	£	GR
¾" x ½"	PVCRCF025B	3.50	13
1" x ¾"	PVCRCF032C	4.67	20
1 ¼" x 1"	PVCRCF040D	10.37	35
1 ½" x 1 ¼"	PVCRCF050E	11.14	37
2" x 1 ½"	PVCRCF063F	14.56	67
2 ½" x 2"	PVCRCF075G	25.65	135
3" x 2 ½"	PVCRCF090H	31.45	160
4" x 3"	PVCRCF110I	51.38	380

MRF



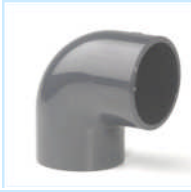
Reducing Piece BSP Female / Female Thread

Size	Code	£	GR
½" x 3/8"	PVCMRF020A	4.53	17
¾" x ½"	PVCMRF025B	5.15	25
1" x ¾"	PVCMRF032C	6.08	40
1 ¼" x 1"	PVCMRF040D	8.26	62
1 ½" x 1 ¼"	PVCMRF050E	9.58	72
2" x 1 ½"	PVCMRF063F	11.76	115
2 ½" x 2"	PVCMRF075G	25.29	128
3" x 2 ½"	PVCMRF090H	32.39	286
4" x 3"	PVCMRF110I	56.29	436

PVC-U Metric Solvent Cement Fittings

GOI

Elbow 90° Plain



Size	Code	£	GR
20	PVCGOI0200	1.53	15
25	PVCGOI0250	1.83	24
32	PVCGOI0320	2.22	43
40	PVCGOI0400	3.91	93
50	PVCGOI0500	5.05	151
63	PVCGOI0630	7.79	252
75	PVCGOI0750	17.97	371
90	PVCGOI0900	22.76	610
110	PVCGOI1100	34.61	1081
125	PVCGOI1250	67.08	1420
140	PVCGOI1400	94.74	2097
160	PVCGOI1600	134.25	3456
200	PVCGOI2000	235.79	4780
225	PVCGOI2250	310.38	7425
250	PVCGOI2500	637.20	12480
315	PVCGOI3150	931.11	23370
400	PVCGOI4000	1559.58	26350

GYI

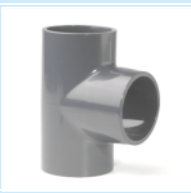
Elbow 45° Plain



Size	Code	£	GR
20	PVCGYI0200	2.59	18
25	PVCGYI0250	2.75	29
32	PVCGYI0320	3.21	46
40	PVCGYI0400	4.65	77
50	PVCGYI0500	5.05	118
63	PVCGYI0630	8.70	195
75	PVCGYI0750	16.74	320
90	PVCGYI0900	20.48	486
110	PVCGYI1100	43.47	833
125	PVCGYI1250	66.93	1091
140	PVCGYI1400	87.10	1510
160	PVCGYI1600	101.31	2198
200	PVCGYI2000	180.71	4468
225	PVCGYI2250	280.02	5713
250	PVCGYI2500	423.55	7700
315	PVCGYI3150	897.98	15500
400	PVCGYI4000	1186.03	20200

TII

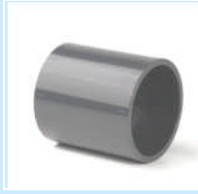
Tee 90° Plain



Size	Code	£	GR
20	PVCTII0200	1.83	24
25	PVCTII0250	2.13	35
32	PVCTII0320	2.99	58
40	PVCTII0400	4.21	129
50	PVCTII0500	6.65	191
63	PVCTII0630	9.93	310
75	PVCTII0750	21.02	481
90	PVCTII0900	28.81	780
110	PVCTII1100	43.78	1340
125	PVCTII1250	89.39	2210
140	PVCTII1400	137.52	2723
160	PVCTII1600	150.06	4361
200	PVCTII2000	272.16	6543
225	PVCTII2250	341.07	12679
250	PVCTII2500	525.80	13250
315	PVCTII3150	1033.34	25300
400	PVCTII4000	1864.35	39900

PVC-U Metric Solvent Cement Fittings

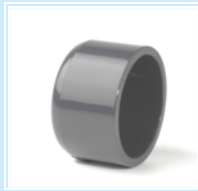
MAI



Socket Plain

Size	Code	£	GR
20	PVCMAI0200	1.14	15
25	PVCMAI0250	1.29	22
32	PVCMAI0320	1.45	37
40	PVCMAI0400	2.22	59
50	PVCMAI0500	2.83	84
63	PVCMAI0630	4.05	147
75	PVCMAI0750	10.54	226
90	PVCMAI0900	15.97	359
110	PVCMAI1100	22.85	610
125	PVCMAI1250	37.51	853
140	PVCMAI1400	54.41	1161
160	PVCMAI1600	58.14	1540
200	PVCMAI2000	118.66	2682
225	PVCMAI2250	166.53	3789
250	PVCMAI2500	284.80	5760
315	PVCMAI3150	452.78	9780
400	PVCMAI4000	530.95	12900

CAI



Cap Plain

Size	Code	£	GR
20	PVCCAI0200	1.07	11
25	PVCCAI0250	1.23	17
32	PVCCAI0320	1.29	34
40	PVCCAI0400	2.13	48
50	PVCCAI0500	3.21	69
63	PVCCAI0630	4.12	117
75	PVCCAI0750	12.46	228
90	PVCCAI0900	13.29	329
110	PVCCAI1100	20.39	530
125	PVCCAI1250	35.99	643
140	PVCCAI1400	41.86	886
160	PVCCAI1600	52.46	1129
200	PVCCAI2000	111.01	1671
225	PVCCAI2250	138.89	2899
250	PVCCAI2500	339.58	3430
315	PVCCAI3150	536.75	7170

CUI



Short Radius Bend 90° Plain

Size	Code	£	GR
20	PVCCUI0200	6.78	30
25	PVCCUI0250	8.43	50
32	PVCCUI0320	11.37	92
40	PVCCUI0400	16.11	165
50	PVCCUI0500	19.62	270
63	PVCCUI0630	25.69	470
75	PVCCUI0750	59.94	990
90	PVCCUI0900	65.55	1600
110	PVCCUI1100	113.58	2856

PVC-U Metric Solvent Cement Fittings

BOI

Union Plain



Size	Code	£	GR
20	PVCBOI0200	5.42	43
25	PVCBOI0250	5.96	71
32	PVCBOI0320	8.03	103
40	PVCBOI0400	9.93	174
50	PVCBOI0500	13.99	228
63	PVCBOI0630	18.57	420
75	PVCBOI0750	66.07	580
90	PVCBOI0900	79.21	760
110	PVCBOI1100	110.24	1340

PVC-U Adaptor Unions

BRI

Union Plain Female/BSP Male O Ring



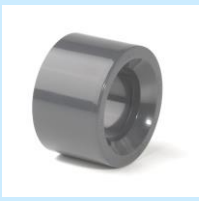
Size	Code	£	GR
50mm x 1 1/2"	PVCBRI050F	17.87	193
50mm x 2"	PVCBRI050G	24.51	324
63mm x 2"	PVCBRI063G	27.39	217

BORM

Union Plain/BSP Male



Size	Code	£	GR
20mm x 1/2"	PVCBORM0200	7.65	56
25mm x 3/4"	PVCBORM0250	9.73	88
32mm x 1"	PVCBORM0320	11.74	133
40mm x 1 1/4"	PVCBORM0400	17.15	216
50mm x 1 1/2"	PVCBORM0500	20.63	277
50mm x 2"	PVCBORM050G	24.36	277
63mm x 2"	PVCBORM0630	30.13	467

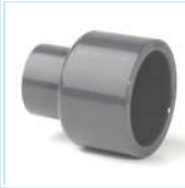
RCI
Reducing Bush Plain


Size	Code	£	GR
20x16	PVCRCI020A	0.92	4
25x16	PVCRCI025A	1.07	9
25x20	PVCRCI025B	1.07	7
32x20	PVCRCI032B	1.38	15
32x25	PVCRCI032C	1.38	11
40x25	PVCRCI040C	1.83	27
40x32	PVCRCI040D	1.83	18
50x20	PVCRCI050B	2.13	45
50x25	PVCRCI050C	2.13	42
50x32	PVCRCI050D	2.13	33
50x40	PVCRCI050E	2.13	37
63x32	PVCRCI063D	3.28	85
63x40	PVCRCI063E	2.83	78
63x50	PVCRCI063F	2.83	63
75x50	PVCRCI075F	5.42	130
75x63	PVCRCI075G	5.42	82
90x50	PVCRCI090F	9.40	214
90x63	PVCRCI090G	9.40	203
90x75	PVCRCI090H	9.40	139
110x50	PVCRCI110F	12.30	383
110x63	PVCRCI110G	12.30	379
110x75	PVCRCI110H	12.30	381
110x90	PVCRCI110I	12.30	273
125x75	PVCRCI125H	27.48	412
125x90	PVCRCI125I	27.48	450
125x110	PVCRCI125J	27.48	275
140x90	PVCRCI140I	34.00	510
140x110	PVCRCI140L	34.00	550
140x125	PVCRCI140M	34.00	320
160x90	PVCRCI160I	44.14	846
160x110	PVCRCI160L	44.14	846
160x125	PVCRCI160M	44.14	725
160x140	PVCRCI160N	44.15	555
200x110	PVCRCI200L	76.37	710
200x125	PVCRCI200M	76.37	710
200x140	PVCRCI200N	89.50	710
200x160	PVCRCI220O	76.37	710
225x160	PVCRCI225O	111.80	1700
225x200	PVCRCI225P	111.80	1360
250x160	PVCRCI2500O	208.12	3050
250x200	PVCRCI2500P	208.12	3500
250x225	PVCRCI2500Q	208.12	2150
315x160	PVCRCI3150O	339.58	8650
315x200	PVCRCI3150P	339.58	8650
315x225	PVCRCI3150Q	339.58	8100
315x250	PVCRCI3150R	339.58	5080

PVC-U Metric Solvent Cement Fittings

MRI

Reducing Socket Plain

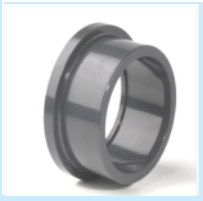


Size ID x ID x OD	Code	£	GR
25x20x32	PVCMRI025B	1.23	17
32x20x40	PVCMRI032B	1.76	27
32x25x40	PVCMRI032C	1.76	30
40x20x50	PVCMRI040B	1.99	46
40x25x50	PVCMRI040C	1.99	50
40x32x50	PVCMRI040D	1.99	53
50x20x63	PVCMRI050B	2.30	93
50x25x63	PVCMRI050C	2.30	96
50x32x63	PVCMRI050D	2.30	100
50x40x63	PVCMRI050E	2.30	111
63x32x75	PVCMRI063D	4.29	115
63x40x75	PVCMRI063E	4.29	110
63x50x75	PVCMRI063F	4.29	118
75x40x90	PVCMRI075E	11.14	190
75x50x90	PVCMRI075F	11.14	181
75x63x90	PVCMRI075G	11.14	218
90x50x110	PVCMRI090F	13.78	350
90x63x110	PVCMRI090G	13.78	350
90x75x110	PVCMRI090H	13.78	388
110x63x125	PVCMRI110G	21.78	475
110x75x125	PVCMRI110H	23.52	500
110x90x125	PVCMRI110I	21.78	518
125x63x140	PVCMRI125G	40.93	776
125x75x140	PVCMRI125H	40.93	690
125x90x140	PVCMRI125I	40.93	750
125x110x140	PVCMRI125L	40.93	680
140x75x160	PVCMRI140H	52.57	983
140x90x160	PVCMRI140I	52.57	1023
140x110x160	PVCMRI140L	52.57	985
140x125x160	PVCMRI140M	52.57	1060
160x75x185	PVCMRI160H	83.28	1485
160x90x185	PVCMRI160I	83.28	1583
160x110x185	PVCMRI160L	83.28	1515
160x125x185	PVCMRI160M	83.28	1550
160x140x185	PVCMRI160N	83.28	1638
200x110x225	PVCMRI200L	165.04	2411
200x125x231	PVCMRI200M	165.04	2794
200x140x225	PVCMRI200N	165.04	2520
200x160x225	PVCMRI200O	165.04	2650

PVC-U Metric Solvent Cement Fittings

QRI

Stub Flange Serrated Plain



Size	Code	£	GR
50	PVCQRI0500	4.28	60
63	PVCQRI0630	7.57	106
75	PVCQRI0750	12.61	165
90	PVCQRI0900	14.14	283
110	PVCQRI1100	19.80	451
125	PVCQRI1250	39.04	586
140	PVCQRI1400	46.08	783
160	PVCQRI1600	46.78	1039
200	PVCQRI2000	54.84	2130
225	PVCQRI2250	125.10	1700
250	PVCQRI2500	161.67	2300
315	PVCQRI3150	254.83	4950
400	PVCQRI4000	426.97	8100

FLNI

PVC-U Stub Flange Kit



Size	Code	£	GR
50	PVCFLNI0500	31.17	662
63	PVCFLNI0630	41.28	980
75	PVCFLNI0750	54.17	1158
90	PVCFLNI0900	71.80	1672
110	PVCFLNI1100	91.20	2161
125	PVCFLNI1250	114.66	2639
140	PVCFLNI1400	135.94	3369
160	PVCFLNI1600	170.60	4588
200	PVCFLNI2000	277.00	7161
225	PVCFLNI2250	419.20	7386
250	PVCFLNI2500	511.56	9426
315	PVCFLNI315	1033.00	13213

FLNI

Galvanised / PVC-U Stub Flange Kit



Size	Code	£	GR
50	GMSFLNI0500	42.12	1754
63	GMSFLNI0630	56.48	2251
75	GMSFLNI0750	74.80	3164
90	GMSFLNI0900	93.78	3714
110	GMSFLNI1100	121.10	4573
125	GMSFLNI1250	170.35	6617
140	GMSFLNI1400	184.66	5691
160	GMSFLNI1600	209.08	8056
200	GMSFLNI2000	312.74	10875
225	GMSFLNI2250	435.62	11350
250	GMSFLNI2500	606.40	16679
315	GMSFLNI3150	942.95	25944

FFLNI

PVC-U Full Faced Flange Kit

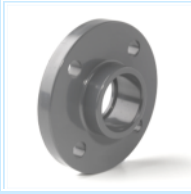


Size	Code	£	GR
20	PVCFFLNI0200	17.12	227
25	PVCFFLNI0250	17.62	302
32	PVCFFLNI0320	18.74	413
40	PVCFFLNI0400	28.24	540
50	PVCFFLNI0500	32.75	661
63	PVCFFLNI0630	37.63	879
75	PVCFFLNI0750	52.22	1190
90	PVCFFLNI0900	69.69	1668
110	PVCFFLNI1100	89.93	2110

PVC-U Metric Solvent Cement Fittings

FFI

Full Face Flange Drilled to BS4504 NP 10/16 Plain



Size	Code	£	GR
20	PVCFFI0200	8.56	70
25	PVCFFI0250	8.71	105
32	PVCFFI0320	9.34	145
40	PVCFFI0400	11.06	220
50	PVCFFI0500	13.01	276
63	PVCFFI0630	16.51	380
75	PVCFFI0750	27.34	505
90	PVCFFI0900	30.75	685
110	PVCFFI1100	42.68	943

FCI

Blanking Flange Drilled to BS4504 NP10/16



Size	Code	£	GR
20	PVCFCI0200	20.22	73
25	PVCFCI0250	23.02	95
32	PVCFCI0320	25.03	136
40	PVCFCI0400	26.36	221
50	PVCFCI0500	28.50	274
63	PVCFCI0630	31.91	370
75	PVCFCI0750	47.78	495
90	PVCFCI0900	60.40	630
110	PVCFCI1100	72.55	800
125	PVCFCI1250	91.11	896
140	PVCFCI1400	113.32	1006
160	PVCFCI1600	127.35	1634
200	PVCFCI2000	137.50	2500
225	PVCFCI2250	152.65	2428
250	PVCFCI2500	303.80	3630
315	PVCFCI3150	409.45	4910
400	PVCFCI4000	1168.40	9230

CXI

Cross Plain



Size	Code	£	GR
20	PVCCXI0200	5.83	30
25	PVCCXI0250	8.81	60
32	PVCCXI0320	10.67	110
40	PVCCXI0400	15.35	180
50	PVCCXI0500	19.36	270
63	PVCCXI0630	26.43	510
75	PVCCXI0750	38.71	525
90	PVCCXI0900	68.48	1104
110	PVCCXI1100	108.79	1870

TRI

Reducing Tee Plain



Size	Code	£	GR
25x20	PVCTRI025B	2.13	42
32x20	PVCTRI032B	2.89	69
32x25	PVCTRI032C	2.89	70
40X20	PVCTRI040B	4.28	105
40X25	PVCTRI040C	4.28	107
40X32	PVCTRI040D	4.28	112
50X20	PVCTRI050B	6.65	155
50x25	PVCTRI050C	6.65	157
50X32	PVCTRI050D	6.65	162
50X40	PVCTRI050E	6.65	168
63X32	PVCTRI063D	9.93	275
63X50	PVCTRI063F	9.93	278
75X50	PVCTRI075F	17.57	465
75X63	PVCTRI075G	17.57	478
90X50	PVCTRI090F	28.81	703
90X63	PVCTRI090G	28.81	713
90X75	PVCTRI090H	28.81	730
110X50	PVCTRI110F	43.78	1250
110X63	PVCTRI110G	43.78	1265
110X75	PVCTRI110H	43.78	1260
110X90	PVCTRI110I	43.78	1295

PVC-U Male Spigot Outlets

MSTC

Male Spigot Triple Outlet Female Central Inlet



Size	Code	£	GR
50	PVCMSTC0500	70.67	770
63	PVCMSTC0630	72.76	1274

MSTS

Male Spigot Triple Outlet Female Side Inlet



Size	Code	£	GR
50	PVCMSTS0500	70.67	770
63	PVCMSTS0630	72.76	1280

MSD

Male Spigot Double Outlet



Size	Code	£	GR
50	PVCMSD0500	53.00	462
63	PVCMSD0630	POA	

MST

Male Spigot Triple Outlet



Size	Code	£	GR
50	PVCMST0500	70.67	
63	PVCMST0630	72.76	

PVC-U

TYI

Tee 45° Plain



Size	Code	£	GR
20	PVCTYI0200	12.67	
25	PVCTYI0250	13.54	
32	PVCTYI0320	15.24	
40	PVCTYI0400	18.71	
50	PVCTYI0500	25.86	234
63	PVCTYI0630	41.20	454
75	PVCTYI0750	108.12	763

GYI

Y Elbow



Size	Code	£	GR
50	PVCGYY0500	20.07	159
63	PVCGYY0630	30.75	250
75	PVCGYY0750	54.13	470

CYY

Y Bend



Size	Code	£	GR
50	PVCCYY0500	23.61	200
63	PVCCYY0630	46.10	412

MSC

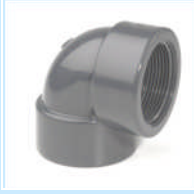
Male End Cap



Size	Code	£	GR
50	PVCMSC0500	5.94	54
63	PVCMSC0630	7.63	82

PVC-U Adaptor Fittings

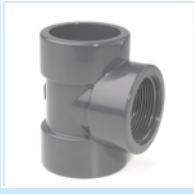
GOR



Elbow 90° Plain/ BSP Female Thread

Size	Code	£	GR
20x 1/2"	PVCGOR020B	3.05	21
25x 1/2"	PVCGOR025B	3.45	39
25x 3/4"	PVCGOR025C	3.45	38
32x1"	PVCGOR032D	4.58	69
40x1 1/4"	PVCGOR040E	9.40	96
50x1 1/2"	PVCGOR050F	10.54	172
63x2"	PVCGOR063G	15.20	281
75x2 1/2"	PVCGOR075H	32.63	418
90x3"	PVCGOR090I	37.07	691
110x4"	PVCGOR110L	51.12	1070

TIR



Tee 90° Plain / BSP Female Thread

Size	Code	£	GR
20x 1/2"	PVCTIR020B	2.68	28
25x 1/2"	PVCTIR025B	3.75	46
25x 3/4"	PVCTIR025C	3.75	45
32x1"	PVCTIR032D	4.69	76
40x1 1/4"	PVCTIR040E	6.65	122
50x1 1/2"	PVCTIR050F	8.70	196
63x2"	PVCTIR063G	13.14	337
75x1 1/2"	PVCTIR075F	32.39	516
90x1 1/2"	PVCTIR090F	34.02	789
110x1 1/2"	PVCTIR110F	58.76	1423

MAR

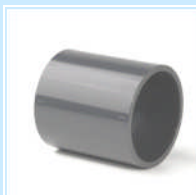


Socket Plain/ BSP Female Thread

Size	Code	£	GR
20x 1/2"	PVCMAR020B	2.68	18
25x 3/4"	PVCMAR025C	2.89	26
32x1"	PVCMAR032D	3.75	45
40x1 1/4"	PVCMAR040E	5.81	63
50x1 1/2"	PVCMAR050F	7.04	94
63x2"	PVCMAR063G	9.33	148
75x2 1/2"	PVCMAR075H	33.24	218
90x3"	PVCMAR090I	30.72	368
110x4"	PVCMAR110L	38.36	581

PVC-U Adaptor Fittings

MAB



Socket Imperial / Metric

Size	Code	£	GR
½" x 20	PVCMAB0200	2.02	16
¾" x 25	PVCMAB0250	2.11	25
1" x 32	PVCMAB0320	2.62	39
1 ¼" x 40	PVCMAB0400	3.96	53
1 ½" x 50	PVCMAB0500	5.67	101
2" x 63	PVCMAB0630	12.92	178
3" x 90	PVCMAB0900	23.18	381
4" x 110	PVCMAB1100	37.73	750
6" x 160	PVCMAB1600	93.35	1695

AMR



Adaptor Female Plain/ BSP Male Thread

Size	Code	£	GR
20x25x ½"	PVCAMR020B	1.99	15
20x25x ¾"	PVCAMR020C	1.99	17
25x32x ¾"	PVCAMR025C	2.30	28
25x32x1"	PVCAMR025D	2.30	29
32x40x ½"	PVCAMR032B	2.83	43
32x40x ¾"	PVCAMR032C	2.83	44
32x40x1"	PVCAMR032D	2.83	46
32x40x1 ¼"	PVCAMR032E	2.83	48
40x50x1"	PVCAMR040D	5.65	72
40x50x1 ¼"	PVCAMR040E	5.65	76
40x50x1 ½"	PVCAMR040F	5.65	83
50x63x1"	PVCAMR050D	8.25	114
50x63x1 ¼"	PVCAMR050E	8.25	123
50x63x1 ½"	PVCAMR050F	8.25	120
50x63x2"	PVCAMR050G	8.25	117
63x75x1 ½"	PVCAMR063F	13.22	153
63x75x2"	PVCAMR063G	13.22	149
63x75x2 ½"	PVCAMR063H	13.22	162
75x90x2"	PVCAMR075G	23.22	259
75x90x3"	PVCAMR075I	23.22	271
90x110x3"	PVCAMR090I	26.62	473
90x110x4"	PVCAMR090L	26.62	481
110x125x3"	PVCAMR110I	34.49	456
110x125x4"	PVCAMR110L	34.49	441

AFR

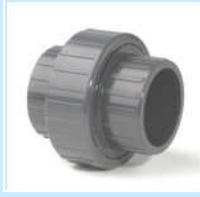


Adaptor Plain Male Spigot / BSP Female Thread

Size	Code	£	GR
20x25x ½"	PVCAFR020B	3.13	21
20x25x ¾"	PVCAFR020C	3.75	23
25x32x ½"	PVCAFR025B	3.75	26
25x32x ¾"	PVCAFR025C	3.75	29
32x40x ¾"	PVCAFR032C	4.43	41
32x40x1"	PVCAFR032D	4.43	43
32x40x1 ¼"	PVCAFR032E	4.43	46
40x50x1 ¼"	PVCAFR040E	6.25	65
50x63x1 ½"	PVCAFR050F	10.80	128
63x75x2"	PVCAFR063G	12.83	170

PVC-U Adaptor Fittings

BOB



Union Imperial / Metric

Size	Code	£	GR
1/2" X 20	PVCBOB0200	9.01	43
3/4" X 25	PVCBOB0250	10.30	71
1" X 32	PVCBOB0320	13.28	103
1 1/4" X 40	PVCBOB0400	13.32	174
1 1/2" X 50	PVCBOB0500	22.67	228
2" X 63	PVCBOB0630	29.03	420
3" X 90	PVCBOB0900	109.12	760
4" X 110	PVCBOB1100	147.47	1340

BOR



Union Plain/ BSP Female Thread

Size	Code	£	GR
20x 1/2"	PVCBOR020B	10.01	43
25x 3/4"	PVCBOR025C	10.70	71
32x1"	PVCBOR032D	13.91	98
40x1 1/4"	PVCBOR040E	16.05	163
50x1 1/2"	PVCBOR050F	23.22	259
63x2"	PVCBOR063G	34.99	426

PVC-U Adaptors with Reinforced Metal Rings

RGOR

Elbow 90 Plain/BSP Female - Reinforcing Ring



Size	Code	£	GR
20mm x 1/2"	PVCRGOR0200	6.55	
25mm x 3/4"	PVCRGOR0250	7.16	
32mm x 1"	PVCRGOR0320	8.06	
40mm x 1 1/4"	PVCRGOR0400	11.47	
50mm x 1 1/2"	PVCRGOR0500	18.82	
63mm x 2"	PVCRGOR0630	26.13	

RTIR

Tee 90 Plain/BSP Female - Reinforcing Ring



Size	Code	£	GR
20mm x 1/2"	PVCRRTIR0200	7.50	
25mm x 3/4"	PVCRRTIR0250	8.27	
32mm x 1"	PVCRRTIR0320	9.20	
40mm x 1 1/4"	PVCRRTIR0400	14.67	
50mm x 1 1/2"	PVCRRTIR0500	21.65	
63mm x 2"	PVCRRTIR0630	30.00	

RMAR

Socket Plain/BSP Female - Reinforcing Ring



Size	Code	£	GR
20mm x 1/2"	PVCRMAR0200	5.83	
25mm x 3/4"	PVCRMAR0250	6.56	
32mm x 1"	PVCRMAR0320	9.20	
40mm x 1 1/4"	PVCRMAR0400	10.68	
50mm x 1 1/2"	PVCRMAR0500	12.51	
63mm x 2"	PVCRMAR0630	17.57	

RAFR

Spigot Plain/BSP Female - Reinforcing Ring



Size	Code	£	GR
20mm x 1/2"	PVCRAFR0200	5.88	
25mm x 3/4"	PVCRAFR0250	8.85	
32mm x 1"	PVCRAFR0320	9.09	
40mm x 1 1/4"	PVCRAFR0400	10.34	
50mm x 1 1/2"	PVCRAFR0500	15.85	
63mm x 2"	PVCRAFR0630	18.76	

PVC-U Ball Valves Industrial

22P

Ball Valve Double Union Plain Socket EPDM Seals



Size	Code	£	GR
1/2"	PVC22P0200	43.40	144
3/4"	PVC22P0250	51.19	263
1"	PVC22P0320	61.82	359
1 1/4"	PVC22P0400	78.71	491
1 1/2"	PVC22P0500	101.62	720
2"	PVC22P0630	129.13	1250
2 1/2"	PVC22P0750	277.58	2176
3"	PVC22P0900	317.63	3263

WRAS
APPROVED
PRODUCT

22I

Ball Valve Double Union Plain Socket EPDM Seals



Size	Code	£	GR
20	PVC22I0200	43.40	144
25	PVC22I0250	51.19	263
32	PVC22I0320	61.82	359
40	PVC22I0400	78.71	491
50	PVC22I0500	101.62	720
63	PVC22I0630	129.13	1250
75	PVC22I0750	277.58	2176
90	PVC22I0900	317.63	3263

22F

Ball Valve Double Union/ BSP Threaded Socket EPDM



Size	Code	£	GR
1/2"	PVC22F0200	46.68	149
3/4"	PVC22F0250	55.79	274
1"	PVC22F0320	68.00	368
1 1/4"	PVC22F0400	87.86	499
1 1/2"	PVC22F0500	115.37	729
2"	PVC22F0630	147.46	1263
2 1/2"	PVC22F0750	286.75	2186
3"	PVC22F0900	363.99	3303

MFV

Laboratory Valve M/F BSP Threaded EPDM Seals



Size	Code	£	GR
1/4"	PVCMFV0140	38.80	



PVC-U Ball Valves Industrial

23P

Ball Valve Double Union Plain Socket FPM Seals



Size	Code	£	GR
1/2"	PVC23P0200	51.89	144
3/4"	PVC23P0250	61.51	263
1"	PVC23P0320	76.40	359
1 1/4"	PVC23P0400	93.22	491
1 1/2"	PVC23P0500	122.24	720
2"	PVC23P0630	168.09	1250
2 1/2"	PVC23P0750	331.38	2176
3"	PVC23P0900	393.95	3263

23I

Ball Valve Double Union Plain Socket FPM Seals



Size	Code	£	GR
20	PVC23I0200	51.89	144
25	PVC23I0250	61.51	263
32	PVC23I0320	76.40	359
40	PVC23I0400	93.22	491
50	PVC23I0500	122.24	720
63	PVC23I0630	168.09	1250
75	PVC23I0750	331.38	2176
90	PVC23I0900	393.95	3263

23F

Ball Valve Double Union / BSP Threaded Socket FPM



Size	Code	£	GR
1/2"	PVC23F0200	56.84	149
3/4"	PVC23F0250	66.93	274
1"	PVC23F0320	85.57	368
1 1/4"	PVC23F0400	103.91	499
1 1/2"	PVC23F0500	136.77	729
2"	PVC23F0630	184.91	1263
2 1/2"	PVC23F0750	353.69	2189
3"	PVC23F0900	503.05	3303



PVC-U Ball Valves Economy

21P

Ball Valve Double Union Plain Socket EPDM Seals



Size	Code	£	GR
½"	PVC21P0200	15.74	141
¾"	PVC21P0250	17.87	259
1"	PVC21P0320	30.57	346
1 ¼"	PVC21P0400	35.74	480
1 ½"	PVC21P0500	45.24	719
2"	PVC21P0630	69.00	1241
2 ½"	PVC21P0750	197.66	2116
3"	PVC21P0900	221.34	3205

21I

Ball Valve Double Union Plain Socket EPDM Seals



Size	Code	£	GR
20	PVC21I0200	15.74	141
25	PVC21I0250	17.87	259
32	PVC21I0320	30.57	346
40	PVC21I0400	35.74	480
50	PVC21I0500	45.24	719
63	PVC21I0630	69.00	1241
75	PVC21I0750	197.66	2116
90	PVC21I0900	221.34	3205

21F

Ball Valve Double Union / BSP Threaded Socket EPDM



Size	Code	£	GR
½"	PVC21F0200	18.41	143
¾"	PVC21F0250	19.63	261
1"	PVC21F0320	32.55	352
1 ¼"	PVC21F0400	39.21	489
1 ½"	PVC21F0500	49.21	730
2"	PVC21F0630	72.81	1260
2 ½"	PVC21F0750	209.65	2136
3"	PVC21F0900	231.97	3241



PVC-U Ball Valves Economy

20P

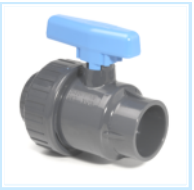
Ball Valve Single Union Plain Socket EPDM Seals



Size	Code	£	GR
1/2"	PVC20P0200	10.54	118
3/4"	PVC20P0250	12.15	183
1"	PVC20P0320	14.28	256
1 1/4"	PVC20P0400	23.68	369
1 1/2"	PVC20P0500	30.95	540
2"	PVC20P0630	48.82	903
2 1/2"	PVC20P0750	127.15	1686
3"	PVC20P0900	136.46	2507

20I

Ball Valve Single Union Plain Socket EPDM Seals



Size	Code	£	GR
20	PVC20I0200	10.54	118
25	PVC20I0250	12.15	183
32	PVC20I0320	14.28	256
40	PVC20I0400	23.68	369
50	PVC20I0500	30.95	540
63	PVC20I0630	48.82	903
75	PVC20I0750	127.15	1686
90	PVC20I0900	136.46	2507

20F

Ball Valve Single Union / BSP Threaded Socket EPDM



Size	Code	£	GR
1/2"	PVC20F0200	10.85	120
3/4"	PVC20F0250	12.53	187
1"	PVC20F0320	14.76	259
1 1/4"	PVC20F0400	24.91	374
1 1/2"	PVC20F0500	31.56	552
2"	PVC20F0630	49.96	915
2 1/2"	PVC20F0750	134.31	1697
3"	PVC20F0900	140.05	2518



PVC-U Check Valves

30P



Check Valve Double Union Plain Socket EPDM Seals

Size	Code	£	GR
1/2"	PVC30P0200	45.08	118
3/4"	PVC30P0250	50.13	189
1"	PVC30P0320	53.94	263
1 1/4"	PVC30P0400	65.11	387
1 1/2"	PVC30P0500	79.30	598
2"	PVC30P0630	113.84	1103
2 1/2"	PVC30P0750	222.06	2120
3"	PVC30P0900	336.87	3270

30I



Check Valve Double Union Plain Socket EPDM Seals

Size	Code	£	GR
20	PVC30I0200	45.08	118
25	PVC30I0250	50.13	189
32	PVC30I0320	53.94	263
40	PVC30I0400	65.11	387
50	PVC30I0500	79.30	598
63	PVC30I0630	113.84	1103
75	PVC30I0750	222.06	2120
90	PVC30I0900	336.87	3270

30F

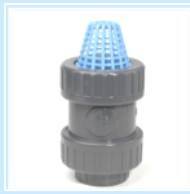


Check Valve Double Union BSP Threaded Socket EPDM Seal

Size	Code	£	GR
1/2"	PVC30F0200	54.09	122
3/4"	PVC30F0250	59.76	193
1"	PVC30F0320	64.26	271
1 1/4"	PVC30F0400	76.93	389
1 1/2"	PVC30F0500	94.90	598
2"	PVC30F0630	136.31	1109
2 1/2"	PVC30F0750	234.05	2150
3"	PVC30F0900	347.50	3270

PVC-U Foot Valves

30IFV



Foot Valve Plain Metric

Size	Code	£	GR
20	PVC30IFV0200	54.09	118
25	PVC30IFV0250	59.76	189
32	PVC30IFV0320	64.26	263
40	PVC30IFV0400	76.93	387
50	PVC30IFV0500	94.90	598
63	PVC30IFV0630	136.31	1103

30PFV



Foot Valve Plain Inch

Size	Code	£	GR
1/2"	PVC30PFV0200	54.09	118
3/4"	PVC30PFV0250	59.76	189
1"	PVC30PFV0320	64.26	263
1 1/4"	PVC30PFV0400	76.93	387
1 1/2"	PVC30PFV0500	94.90	598
2"	PVC30PFV0630	136.31	1103

PVC-U Clear Spring Check Valves

Plain Socket



Size	Code	£	GR
1/2"	PVC30PC0200	44.50	118
3/4"	PVC30PC0250	52.41	189
1"	PVC30PC0320	54.99	263
1 1/4"	PVC30PC0400	78.33	387
1 1/2"	PVC30PC0500	83.46	598
2"	PVC30PC0630	123.79	1103

Plain Socket



Size	Code	£	GR
20	PVC30IC0200	44.50	118
25	PVC30IC0250	52.41	189
32	PVC30IC0320	54.99	263
40	PVC30IC0400	78.33	387
50	PVC30IC0500	83.46	598
63	PVC30IC0630	123.79	1103

Plain Socket



Size	Code	£	GR
50	PVC30IT0500	91.18	290
63	PVC30IT0630	116.88	450

PVC-U Wafer Check Valves

71I

Wafer Check Valve EPDM Seals



Size	Code	£	GR
63 /2"	PVC71I0630	252.17	310
75 /2 1/2"	PVC71I0750	269.24	406
90 /3"	PVC71I0900	283.76	468
110 /4"	PVC71I1100	334.54	660
125	PVC71I1250	401.10	850
140 /5"	PVC71I1400	401.10	850
160 /6"	PVC71I1600	569.43	1252
200	PVC71I2000	632.88	
225 /8"	PVC71I2250	675.36	2230
250	PVC71I2500	915.52	
315	PVC71I3150	1591.73	

72I

Wafer Check Valve EPDM Seals and Stainless Spring



Size	Code	£	GR
63 /2"	PVC72I0630	358.28	310
75 /2 1/2"	PVC72I0750	479.33	406
90 /3"	PVC72I0900	512.51	468
110 /4"	PVC72I1100	594.87	660
140 /5"	PVC72I1400	677.23	850
160 /6"	PVC72I1600	811.96	1252
225 /8"	PVC72I2250	1512.83	2230

73P

Wafer Check Valve EPDM Seals with Flange Kit Inch



Size	Code	£	GR
2"	PVC73P0630	292.14	
2 1/2"	PVC73P0750	321.92	
3"	PVC73P0900	368.02	
4"	PVC73P1100	428.90	
5"	PVC73P1400	564.16	
6"	PVC73P1600	770.95	
8"	PVC73P2250	1190.15	

73I

Wafer Check Valve EPDM Seals with Flange Kit Metric



Size	Code	£	GR
63	PVC73I0630	290.64	
75	PVC73I0750	320.19	
90	PVC73I0900	363.75	
110	PVC73I1100	424.63	
125	PVC73I1250	525.83	
140	PVC73I1400	561.50	
160	PVC73I1600	756.02	
200	PVC73I2000	942.42	
225	PVC73I2250	1188.42	
250	PVC73I2500	1525.81	
315	PVC73I315	2563.46	

PVC-U Butterfly Valves

PVC15I



Stainless Steel Shaft with EPDM Seals

Size	Code	£	GR
75 / 2 ½"	PVC15I0750	221.70	1770
90 / 3"	PVC15I0900	246.91	2050
110 / 4"	PVC15I1100	266.98	2290
125	PVC15I1250	315.06	2700
140 / 5"	PVC15I1400	315.06	2960
160 / 6"	PVC15I1600	378.07	3730
200	PVC15I2000	533.04	5700
225 / 8"	PVC15I2250	533.04	5700

PVC16I



PVC-U Flanged Butterfly Valves Metric Sizes

Size	Code	£	GR
75	PVC16I0750	301.29	4950
90	PVC16I0900	322.06	6225
110	PVC16I1100	378.07	7340
125	PVC16I1250	455.08	8167
140	PVC16I1400	494.29	9227
160	PVC16I1600	658.12	13839
200	PVC16I2000	924.17	14740
225	PVC16I2250	980.18	14740

PVC16P



PVC-U Flanged Butterfly Valves Imperial Sizes

Size	Code	£	GR
2 ½"	PVC16P0750	301.29	4950
3"	PVC16P0900	347.82	6225
4"	PVC16P1100	408.31	7340
5"	PVC16P1400	494.29	9227
6"	PVC16P1600	710.77	13839
8"	PVC16P2250	1058.59	14740

PVC17I



PVC-U Actuated Butterfly Valves 12 - 24v

Size	Code	£	GR
75/2 ½"	PVC17I0750	1339.32	4950
90/3"	PVC17I0900	1372.70	6225
110/4"	PVC17I1100	1607.10	7340
125/140/5"	PVC17I1400	2276.76	9227
160/6"	PVC17I1600	2343.70	13839

PVC18I



PVC-U Actuated Butterfly Valves 85 - 240v

Size	Code	£	GR
75 / 2 ½"	PVC18I0750	1339.32	4950
90 / 3"	PVC18I0900	1372.70	6225
110 / 125/4"	PVC18I1100	1607.10	7340
140 / 5"	PVC18I1400	2276.76	9227
160 / 6"	PVC18I1600	2343.70	13839

PVC



PVC-U Flange Kit

Size	Code	£	GR
75 / 2 ½"	PVCBKI0750	79.59	1158
90	PVCBKI0900	121.44	1672
110	PVCBKI1100	142.48	2161
125	PVCBKI1250	184.35	2161
140 / 5"	PVCBKI1400	205.32	3369
160	PVCBKI1600	318.39	4588
200	PVCBKI2000	410.57	7161
225	PVCBKI2250	481.85	7386
3"	PVCBKP0900	134.84	1672
4"	PVCBKP1100	155.98	2161
6"	PVCBKP1600	333.47	4588
8"	PVCBKP2250	498.30	7386

PVC-U Diaphragm Valves

40P

Diaphragm Valve Plain Sockets EPDM Seals



Size	Code	£	GR
½"	PVC40P0200	132.29	
¾"	PVC40P0250	147.87	
1"	PVC40P0320	180.73	
1 ¼"	PVC40P0400	238.39	
1 ½"	PVC40P0500	306.87	
2"	PVC40P0630	367.71	

40I

Diaphragm Valve Plain Sockets EPDM Seals



Size	Code	£	GR
20	PVC40I0200	132.29	
25	PVC40I0250	147.87	
32	PVC40I0320	180.73	
40	PVC40I0400	238.39	
50	PVC40I0500	306.87	
63	PVC40I0630	367.71	

40F

Diaphragm Valve BSP Threaded Sockets EPDM Seals



Size	Code	£	GR
½"	PVC40F0200	133.30	
¾"	PVC40F0250	148.88	
1"	PVC40F0320	181.74	
1 ¼"	PVC40F0400	239.40	
1 ½"	PVC40F0500	307.93	
2"	PVC40F0630	370.00	

PVC-U 3 Way Ball Valves

64P



3 Way Ball Valve L Port Plain Sockets EPDM Seals

Size	Code	£	GR
3/8"	PVC64P0160	42.52	227
1/2"	PVC64P0200	42.52	232
3/4"	PVC64P0250	52.23	303
1"	PVC64P0320	63.65	492
1 1/4"	PVC64P0400	80.96	760
1 1/2"	PVC64P0500	99.66	1456
2"	PVC64P0630	119.40	1843

64I



3 Way Ball Valve L Port Plain Sockets EPDM Seals

Size	Code	£	GR
16	PVC64I0160	42.52	227
20	PVC64I0200	42.52	232
25	PVC64I0250	52.23	303
32	PVC64I0320	63.65	492
40	PVC64I0400	80.96	760
50	PVC64I0500	99.66	1456
63	PVC64I0630	119.40	1843

65P



3 Way Ball Valve T Port Plain Sockets EPDM Seals

Size	Code	£	GR
3/8"	PVC65P0160	42.52	226
1/2"	PVC65P0200	42.52	231
3/4"	PVC65P0250	52.23	300
1"	PVC65P0320	63.65	489
1 1/4"	PVC65P0400	80.96	742
1 1/2"	PVC65P0500	99.66	1436
2"	PVC65P0630	119.40	2142

65I



3 Way Ball Valve T Port Plain Sockets EPDM Seals

Size	Code	£	GR
16	PVC65I0160	42.52	226
20	PVC65I0200	42.52	231
25	PVC65I0250	52.23	300
32	PVC65I0320	63.65	489
40	PVC65I0400	80.96	742
50	PVC65I0500	99.66	1436
63	PVC65I0630	119.40	2142

PVC-U Actuator Valve Bodies With Adaptor

Plain Socket

Ball Valve Double Union Plain Socket EPDM



Size	Code	£	GR
½"	PVC25P0200	100.76	140
¾"	PVC25P0250	116.01	340
1"	PVC25P0320	128.75	350
1¼"	PVC25P0400	138.37	800
1½"	PVC25P0500	147.87	810
2"	PVC25P0630	182.89	1350
2½"	PVC25P0750	369.94	2440
3"	PVC25P0900	424.13	3680

Plain Socket

Ball Valve Double Union Plain Socket EPDM



Size	Code	£	GR
20	PVC25I0200	100.76	140
25	PVC25I0250	116.01	340
32	PVC25I0320	128.75	350
40	PVC25I0400	138.37	800
50	PVC25I0500	147.87	810
63	PVC25I0630	182.89	1350
75	PVC25I0750	369.94	2440
90	PVC25I0900	424.13	3680

BSP Socket

Ball Valve Double Union BSP Socket EPDM



Size	Code	£	GR
½"	PVC25F0200	105.70	140
¾"	PVC25F0250	121.41	340
1"	PVC25F0320	137.91	350
1¼"	PVC25F0400	149.08	800
1½"	PVC25F0500	162.39	810
2"	PVC25F0630	199.70	1350
2½"	PVC25F0750	381.92	2440
3"	PVC25F0900	434.77	3680

Plain Socket

Ball Valve Double Union Plain Socket FPM



Size	Code	£	GR
20	PVC25V0200	109.27	140
25	PVC25V0250	126.33	340
32	PVC25V0320	143.33	350
40	PVC25V0400	152.87	800
50	PVC25V0500	168.48	810
63	PVC25V0630	221.86	1350
75	PVC25V0750	423.74	2440
90	PVC25V0900	500.45	3680

The Actuator Valves are our Industrial PVC22 Series Valves with Actuator Mounting

PVC-U Electrically Actuated Double Union Ball Valves

Plain Socket

12-24 V DC/AC EPDM



Size	Code	£	GR
½"	PVC26P0200	993.64	2440
¾"	PVC26P0250	1011.39	2640
1"	PVC26P0320	1021.99	2650
1 ¼"	PVC26P0400	1121.40	3400
1 ½"	PVC26P0500	1144.31	3410
2"	PVC26P0630	1153.32	3650
2 ½"	PVC26P0750	1788.54	4740
3"	PVC26P0900	1863.08	5980

Plain Socket

12-24 V DC/AC EPDM



Size	Code	£	GR
20	PVC26I0200	993.64	2440
25	PVC26I0250	1011.39	2640
32	PVC26I0320	1021.99	2650
40	PVC26I0400	1121.40	3400
50	PVC26I0500	1144.31	3410
63	PVC26I0630	1153.32	3650
75	PVC26I0750	1788.54	4740
90	PVC26I0900	1863.08	5980

BSP Socket

12-24 V DC/AC EPDM



Size	Code	£	GR
"1/2	PVC26F0200	996.93	2440
"3/4	PVC26F0250	1015.99	2640
1"	PVC26F0320	1028.16	2650
1"1/4	PVC26F0400	1130.55	3400
1"1/2	PVC26F0500	1158.05	3410
2"	PVC26F0630	1171.66	3650
2"1/2	PVC26F0750	1797.72	4740
3"	PVC26F0900	1873.70	5980

The Actuator Valves are our Industrial PVC22 Series Valves with Actuator Mounting, Fail Safe Closed Option is Available – Price on Application.

PVC-U Electrically Actuated Double Union Ball Valves

Plain Socket

85-240V DC/AC EPDM



Size	Code	£	GR
1/2"	PVC27P0200	993.64	2440
3/4"	PVC27P0250	1011.39	2640
1"	PVC27P0320	1021.99	2650
1 1/4"	PVC27P0400	1121.40	3400
1 1/2"	PVC27P0500	1144.31	3410
2"	PVC27P0630	1153.32	3650
2 1/2"	PVC27P0750	1788.54	4740
3"	PVC27P0900	1863.08	5980

Plain Socket

85-240V DC/AC EPDM



Size	Code	£	GR
20	PVC27I0200	993.64	2440
25	PVC27I0250	1011.39	2640
32	PVC27I0320	1021.99	2650
40	PVC27I0400	1121.40	3400
50	PVC27I0500	1144.31	3410
63	PVC27I0630	1153.32	3650
75	PVC27I0750	1788.54	4740
90	PVC27I0900	1863.08	5980

BSP Socket

85-240V DC/AC EPDM



Size	Code	£	GR
"1/2	PVC27F0200	996.93	2440
"3/4	PVC27F0250	1015.99	2640
1"	PVC27F0320	1028.16	2650
1"1/4	PVC27F0400	1130.55	3400
1"1/2	PVC27F0500	1158.05	3410
2"	PVC27F0630	1171.66	3650
2"1/2	PVC27F0750	1797.72	4740
3"	PVC27F0900	1873.70	5980

The Actuator Valves are our Industrial PVC22 Series Valves with Actuator Mounting

PVC-U Electrically Actuated Double Union Ball Valves

Plain Socket

12-24 V DC/AC FPM



Size	Code	£	GR
1/2"	PVC28P0200	1002.15	2440
3/4"	PVC28P0250	1021.71	2640
1"	PVC28P0320	1036.57	2650
1 1/4"	PVC28P0400	1135.90	3400
1 1/2"	PVC28P0500	1164.92	3410
2"	PVC28P0630	1192.29	3650
2 1/2"	PVC28P0750	1842.34	4740
3"	PVC28P0900	1939.40	5980

Plain Socket

12-24 V DC/AC FPM



Size	Code	£	GR
20	PVC28I0200	1002.15	2440
25	PVC28I0250	1021.71	2640
32	PVC28I0320	1036.57	2650
40	PVC28I0400	1135.90	3400
50	PVC28I0500	1164.92	3410
63	PVC28I0630	1192.29	3650
75	PVC28I0750	1842.34	4740
90	PVC28I0900	1939.40	5980

BSP Socket

12-24 V DC/AC FPM



Size	Code	£	GR
"1/2	PVC28F0200	1007.08	2440
"3/4	PVC28F0250	1027.12	2640
1"	PVC28F0320	1045.73	2650
1"1/4	PVC28F0400	1146.60	3400
1"1/2	PVC28F0500	1178.83	3410
2"	PVC28F0630	1209.10	3650
2"1/2	PVC28F0750	1864.65	4740
3"	PVC28F0900	1950.02	5980

The Actuator Valves are our Industrial PVC22 Series Valves with Actuator Mounting

PVC-U Electrically Actuated Double Union Ball Valves

29P

85-240V DC/AC FPM - Plain



Size	Code	£	GR
1/2"	PVC29P0200	1002.15	2440
3/4"	PVC29P0250	1021.71	2640
1"	PVC29P0320	1036.57	2650
1 1/4"	PVC29P0400	1135.90	3400
1 1/2"	PVC29P0500	1164.92	3410
2"	PVC29P0630	1192.29	3650
2 1/2"	PVC29P0750	1842.34	4740
3"	PVC29P0900	1939.40	5980

29I

85-240V DC/AC FPM - Plain



Size	Code	£	GR
20	PVC29I0200	1002.15	2440
25	PVC29I0250	1021.71	2640
32	PVC29I0320	1036.57	2650
40	PVC29I0400	1135.90	3400
50	PVC29I0500	1164.92	3410
63	PVC29I0630	1192.29	3650
75	PVC29I0750	1842.34	4740
90	PVC29I0900	1939.40	5980

29F

85-240V DC/AC FPM - BSP



Size	Code	£	GR
1/2"	PVC29F0200	1007.08	2440
3/4"	PVC29F0250	1027.12	2640
1"	PVC29F0320	1045.73	2650
1 1/4"	PVC29F0400	1146.60	3400
1 1/2"	PVC29F0500	1179.46	3410
2"	PVC29F0630	1209.10	3650
2 1/2"	PVC29F0750	1864.65	4740
3"	PVC29F0900	1950.02	5980

The Actuator Valves are our Industrial PVC22 Series Valves with Actuator Mounting

Excellence in Fittings
Pipes & Valves



plimat



Material Specifications and General information

ABS Pressure Pipe Systems

General Information

ABS (Acrylonitrile Butadiene Styrene) is a homogenous material with good chemical resistance and high impact strength. Other advantageous features are its suitability for use at low Temperatures (-40°C) and its ease of jointing.

Standards

Individual Products are in accordance with the appropriate British Standards.

Fittings (inch)	BS 5392 Part 1
Fittings (metric)	DIN 8063, KIWA 549, ISO 727
Threaded Fittings	BS21, DIN 2999, ISO 07
Solvent Cement	BS 4346 Part 3
Pipe	BS 5391

Wras Approval



The material meets the requirements
Of the Water Regulations Advisory Scheme
for potable water.

Chemical Resistance

The chemical resistance properties of ABS are good for most diluted inorganic acids, organic acids, animal fats and oils and salts. It is not resistant to acetic acid, alcohol, organic solvents, petrol and vegetable oil.

Colour

Plimat ABS Products are manufactured in mid grey colour

Temperature

ABS is suitable for use over a wide temperature range from -40°C to 70°C

Pressure Ratings for ABS Fittings & Valves

Product	Size	Pressure
Fittings Solvent Cement	½ - 6	15 Bar (217 Psi)
Fittings Solvent Cement	8	9 Bar (130 Psi)
Fittings Threaded	½ - 4	10 Bar (145 Psi)
Valves	½ - 2	16 Bar (232 Psi)
Valves	2½ - 3	10 Bar (145 Psi)

Temperature & Pressure Relationship

Temp°C	Class C Bar	Class D Bar	Class E Bar
-40	9.0	12.0	15.0
-20	9.0	12.0	15.0
0	9.0	12.0	15.0
20	9.0	12.0	15.0
30	7.5	10.0	12.5
40	6.1	8.1	10.1
50	4.6	6.1	7.7
60	3.2	4.2	5.3
70	1.8	2.4	3.0

Imperial Pipe Sizes (BS 5391)

Size (Inch)	Minimum Mean Outside Diameter (mm)	Minimum Wall Thickness (mm)			
		Class C	Class D	Class E	Class T
3/8"	17.0			1.6	3.4
1/2"	21.2			1.9	3.5
3/4"	26.6			2.4	3.5
1"	33.4	1.9		3.0	4.2
1 1/4"	42.1	2.4		3.8	4.2
1 1/2"	48.1	2.7		4.4	5.8
2"	60.2	3.4		5.4	7.0
2 1/2"	75.0	4.7			
3"	88.7	5.0		8.0	
4"	114.1	6.4		10.0	
5"	140.0	8.8			
6"	168.0	9.4	12.3		
8"	218.8	12.2			

ABS BS Inch Solvent Cement Fittings

GOP

Elbow 90° Plain



Size	Code	£	GR
1/2"	ABSGOP0200	1.83	18
3/4"	ABSGOP0250	2.13	29
1"	ABSGOP0320	2.99	54
1 1/4"	ABSGOP0400	5.11	73
1 1/2"	ABSGOP0500	6.65	115
2"	ABSGOP0630	10.01	286
2 1/2"	ABSGOP0750	19.26	391
3"	ABSGOP0900	28.87	659
4"	ABSGOP1100	43.09	948
5"	ABSGOP1400	91.69	1542
6"	ABSGOP1600	188.02	2969
8"	ABSGOP2250	320.20	6567

GYP

Elbow 45° Plain



Size	Code	£	GR
1/2"	ABSGYP0200	3.45	13
3/4"	ABSGYP0250	3.52	18
1"	ABSGYP0320	4.43	32
1 1/4"	ABSGYP0400	6.42	46
1 1/2"	ABSGYP0500	8.03	98
2"	ABSGYP0630	11.09	178
2 1/2"	ABSGYP0750	17.50	234
3"	ABSGYP0900	26.05	390
4"	ABSGYP1100	54.09	641
5"	ABSGYP1400	91.69	1526
6"	ABSGYP1600	112.32	2316
8"	ABSGYP2250	290.30	3820

MAP

Socket Plain



Size	Code	£	GR
1/2"	ABSMAP0200	1.38	11
3/4"	ABSMAP0250	1.53	16
1"	ABSMAP0320	1.76	26
1 1/4"	ABSMAP0400	3.05	40
1 1/2"	ABSMAP0500	3.59	74
2"	ABSMAP0630	5.11	133
2 1/2"	ABSMAP0750	11.09	167
3"	ABSMAP0900	21.88	289
4"	ABSMAP1100	31.82	523
5"	ABSMAP1400	56.47	841
6"	ABSMAP1600	79.79	1298
8"	ABSMAP2250	175.09	3391

TIP

Tee 90° Plain



Size	Code	£	GR
1/2"	ABSTIP0200	2.06	17
3/4"	ABSTIP0250	2.83	28
1"	ABSTIP0320	3.98	50
1 1/4"	ABSTIP0400	5.65	83
1 1/2"	ABSTIP0500	8.33	117
2"	ABSTIP0630	12.68	286
2 1/2"	ABSTIP0750	22.00	394
3"	ABSTIP0900	37.07	659
4"	ABSTIP1100	54.41	1143
5"	ABSTIP1400	144.40	2041
6"	ABSTIP1600	190.26	3764
8"	ABSTIP2250	358.03	8506

ABS BS Inch Cement Fittings

CAP

Cap Plain



Size	Code	£	GR
½"	ABSCAP0200	1.29	10
¾"	ABSCAP0250	1.53	12
1"	ABSCAP0320	1.76	21
1 ¼"	ABSCAP0400	2.83	31
1 ½"	ABSCAP0500	4.36	62
2"	ABSCAP0630	5.65	107
2 ½"	ABSCAP0750	14.21	143
3"	ABSCAP0900	16.74	241
4"	ABSCAP1100	25.60	398
6"	ABSCAP1600	78.24	1021

CUP

Short Radius Bend 90° Plain



Size	Code	£	GR
½"	ABSCUP0200	7.63	32
¾"	ABSCUP0250	8.87	55
1"	ABSCUP0320	12.46	90
1 ¼"	ABSCUP0400	17.83	156
1 ½"	ABSCUP0500	22.34	256
2"	ABSCUP0630	29.67	445
2 ½"	ABSCUP0750	61.66	777
3"	ABSCUP0900	75.83	1361
4"	ABSCUP1100	124.94	2079

BOP

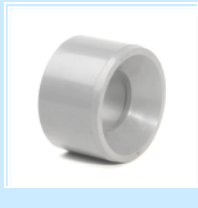
Union Plain



Size	Code	£	GR
½"	ABSBOP0200	8.17	52
¾"	ABSBOP0250	8.87	77
1"	ABSBOP0320	12.00	99
1 ¼"	ABSBOP0400	14.67	168
1 ½"	ABSBOP0500	20.17	226
2"	ABSBOP0630	26.32	393
2 ½"	ABSBOP0750	56.18	434
3"	ABSBOP0900	85.96	599
4"	ABSBOP1100	115.77	876

RCP

Reducing Bush Plain



Size	Code	£	GR
¾" x ½"	ABSRCP025B	1.56	6
1" x ½"	ABSRCP032B	2.02	16
1" x ¾"	ABSRCP032C	2.02	10
1¼" x 1"	ABSRCP040D	2.66	20
1½" x ¾"	ABSRCP050C	3.43	39
1½" x 1"	ABSRCP050D	3.43	42
1½" x 1¼"	ABSRCP050E	3.43	22
2" x 1"	ABSRCP063D	4.60	69
2" x 1¼"	ABSRCP063E	4.60	71
2" x 1½"	ABSRCP063F	4.60	54
2 ½" x 1 ½"	ABSRCP075F	8.17	90
2 ½" x 2"	ABSRCP075G	8.17	93
3" x 1 ½"	ABSRCP090F	14.10	169
3" x 2"	ABSRCP090G	14.10	143
3" x 2 ½"	ABSRCP090H	14.10	96
4" x 2"	ABSRCP110G	17.61	336
4" x 3"	ABSRCP110I	17.61	258
5" x 4"	ABSRCP140L	50.72	748
6" x 4"	ABSRCP160L	54.20	745
8" x 6"	ABSRCP225M	117.01	1559

ABS BS Inch Solvent Cement Fittings

QRP



Stub Flange (Serrated Face)

Size	Code	£	GR
1"	ABSQRP0320	2.32	18
1 ¼"	ABSQRP0400	4.54	50
1 ½"	ABSQRP0500	6.23	50
2"	ABSQRP0630	9.58	91
2 ½"	ABSQRP0750	15.18	118
3"	ABSQRP0900	18.77	209
4"	ABSQRP1100	24.30	330
5"	ABSQRP1400	64.15	565
6"	ABSQRP1600	72.63	826
8"	ABSQRP2250	183.59	1580

FLNP



Stub Flange Kit (Serrated Face)

Size	Code	£	GR
1 ½"	ABSFLNP0500	45.06	
2"	ABSFLNP0630	59.95	
2 ½"	ABSFLNP0750	79.69	
3"	ABSFLNP0900	101.28	
4"	ABSFLNP1100	124.64	
5"	ABSFLNP1400	212.72	
6"	ABSFLNP1600	246.20	
8"	ABSFLNP2250	455.18	

FNP



Full Face Flange BS4504 NP10/16 Plain

Size	Code	£	GR
½"	ABSFNP0200	8.71	70
¾"	ABSFNP0250	8.87	105
1"	ABSFNP0320	9.34	145
1 ¼"	ABSFNP0400	11.21	220
1 ½"	ABSFNP0500	13.01	270
2"	ABSFNP0630	17.13	380
2 ½"	ABSFNP0750	26.89	465
3"	ABSFNP0900	32.23	524
4"	ABSFNP1100	42.97	666

FFLNP



Full Face Flange Kit Plain

Size	Code	£	GR
½"	ABSFFLNP0200	17.28	
¾"	ABSFFLNP0250	18.82	
1"	ABSFFLNP0320	22.78	
1¼"	ABSFFLNP0400	33.25	
1 ½"	ABSFFLNP0500	40.67	
2"	ABSFFLNP0630	47.22	
2 ½"	ABSFFLNP0750	51.72	
3"	ABSFFLNP0900	71.38	
4"	ABSFFLNP1100	90.27	

ABS Adaptor Fittings

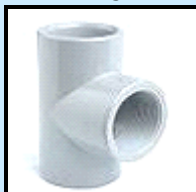
GOC



Elbow 90° Plain/ BSP Female Thread

Size	Code	£	GR
1/2"	ABSGOC0200	6.60	16
3/4"	ABSGOC0250	7.00	28
1"	ABSGOC0320	9.06	49
1 1/4"	ABSGOC0400	18.52	76
1 1/2"	ABSGOC0500	20.70	163
2"	ABSGOC0630	29.30	308
3"	ABSGOC0900	54.20	549

TIC



Tee 90° Plain / BSP Female Thread

Size	Code	£	GR
1/2"	ABSTIC0200	7.00	25
3/4"	ABSTIC0250	7.74	38
1"	ABSTIC0320	9.37	69
1 1/4"	ABSTIC0400	19.66	106
1 1/2"	ABSTIC0500	21.66	213
2"	ABSTIC0630	30.43	380
3"	ABSTIC0900	56.93	674

MAC



Adaptor Female Plain/ BSP Female Thread

Size	Code	£	GR
1/2"	ABSMAC0200	4.28	15
3/4"	ABSMAC0250	4.75	22
1"	ABSMAC0320	5.93	37
1 1/4"	ABSMAC0400	9.26	60
1 1/2"	ABSMAC0500	10.82	104
2"	ABSMAC0630	14.26	161
3"	ABSMAC0900	39.01	343
4"	ABSMAC1100	46.79	360

AMC



Adaptor Female Plain/ BSP Male Thread

Size	Code	£	GR
1/2"	ABSAMC0200	2.49	16
3/4"	ABSAMC0250	3.28	28
1"	ABSAMC0320	4.53	48
1 1/4"	ABSAMC0400	6.23	54
1 1/2"	ABSAMC0500	8.10	113
2"	ABSAMC0630	11.60	184
3"	ABSAMC0900	33.40	356
4"	ABSAMC1100	50.99	454

ABS Adaptor Fittings

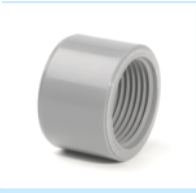
AFC



Adaptor Plain Male Spigot/ BSP Female

Size	Code	£	GR
1/2"	ABSAFC0200	3.24	165
3/4"	ABSAFC0250	4.16	290
1"	ABSAFC0320	5.77	310
1 1/4"	ABSAFC0400	7.28	450
1 1/2"	ABSAFC0500	9.90	486
2"	ABSAFC0630	13.84	950

RCC



Reducing Bush Plain / BSP Female Thread

Size	Code	£	GR
1/2" x 3/8"	ABSRCC020A	3.11	4
3/4" x 1/2"	ABSRCC025B	3.59	7
1" x 3/4"	ABSRCC032C	4.75	13

BFC



Composite Union Plain / BSP Female Brass Thread

Size	Code	£	GR
1/2"	ABSBFC0200	POA	165
3/4"	ABSBFC0250	POA	290
1"	ABSBFC0320	POA	310
1 1/4"	ABSBFC0400	POA	450
1 1/2"	ABSBFC0500	POA	486
2"	ABSBFC0630	POA	950
2 1/2"	ABS BFC0750	POA	1663
3"	ABSBFC0900	POA	2184

BMC



Composite Union Plain / BSP Male Brass Thread

Size	Code	£	GR
1/2"	ABSBMC0200	POA	175
3/4"	ABSBMC0250	POA	238
1"	ABSBMC0320	POA	324
1 1/4"	ABSBMC0400	POA	469
1 1/2"	ABSBMC0500	POA	545
2"	ABSBMC0630	POA	982
2 1/2"	ABSBMC0750	POA	1663
3"	ABSBMC0900	POA	2184

ABS Adaptor Fittings

TCC

Tank Connector Plain/ BSP Male Thread



Size	Code	£	GR
½"	ABSTCC0200	5.61	41
¾"	ABSTCC0250	6.16	52
1"	ABSTCC0320	13.32	108
1 ¼"	ABSTCC0400	33.79	153
1 ½"	ABSTCC0500	37.23	216
2"	ABSTCC0630	44.47	370
2 ½"	ABSTCC0750	58.32	373
3"	ABSTCC0900	66.72	674
4"	ABSTCC1100	100.03	1214

BNC

Barrel Nipple Plain/ BSP Male Thread



Size	Code	£	GR
3/8"	ABSBNC0160	2.82	8
½"	ABSBNC0200	3.11	11
¾"	ABSBNC0250	3.90	13
1"	ABSBNC0320	4.99	20
1 ¼"	ABSBNC0400	6.86	30
1 ½"	ABSBNC0500	7.48	51
2"	ABSBNC0630	9.67	84
2 ½"	ABSBNC0750	22.57	196
3"	ABSBNC0900	25.55	300
4"	ABSBNC1100	33.94	560

BAF

Barrel Nipple BSP Male Thread



Size	Code	£	GR
½"	ABSBAF0200	3.43	11
¾"	ABSBAF0250	4.05	13
1"	ABSBAF0320	5.37	20
1 ¼"	ABSBAF0400	6.93	31
1 ½"	ABSBAF0500	7.56	52
2"	ABSBAF0630	9.67	83
2 ½"	ABSBAF0750	21.88	169
3"	ABSBAF0900	25.90	243
4"	ABSBAF1100	34.34	485

NUF

Backnut BSP



Size	Code	£	GR
½"	ABSNUF0200	2.78	10
¾"	ABSNUF0250	3.07	13
1"	ABSNUF0320	5.24	24
1 ¼"	ABSNUF0400	11.44	28
1 ½"	ABSNUF0500	13.04	36
2"	ABSNUF0630	13.71	72
2 ½"	ABSNUF0750	20.65	144
3"	ABSNUF0900	23.31	188
4"	ABSNUF1100	29.31	280

ABS Ball Valves Industrial

22P

Ball Valve Double Union Plain Socket EPDM Seals



Size	Code	£	GR
1/2"	ABS22P0200	45.46	193
3/4"	ABS22P0250	54.09	236
1"	ABS22P0320	64.56	343
1 1/4"	ABS22P0400	82.52	489
1 1/2"	ABS22P0500	106.98	712
2"	ABS22P0630	136.01	1269
2 1/2"	ABS22P0750	269.56	2160
3"	ABS22P0900	345.96	5621

23P

Ball Valve Double Union Plain Socket EPDM Seals



Size	Code	£	GR
1/2"	ABS23P0200	51.12	193
3/4"	ABS23P0250	59.40	236
1"	ABS23P0320	74.28	343
1 1/4"	ABS23P0400	90.57	489
1 1/2"	ABS23P0500	119.54	712
2"	ABS23P0630	161.31	1269
2 1/2"	ABS23P0750	287.73	2160
3"	ABS23P0900	396.18	5621

20P

Ball Valve Single Union Plain Socket EPDM Seals



Size	Code	£	GR
1/2"	ABS20P0200	23.21	114
3/4"	ABS20P0250	27.24	152
1"	ABS20P0320	33.41	227
1 1/4"	ABS20P0400	42.85	313
1 1/2"	ABS20P0500	54.89	501
2"	ABS20P0630	68.69	870
2 1/2"	ABS20P0750	190.48	1509
3"	ABS20P0900	223.32	2407

ABS Check Valve

30P

Check Valve Double Union Plain Socket



Size	Code	£	GR
1/2"	ABS30P0200	52.26	85
3/4"	ABS30P0250	61.66	87
1"	ABS30P0320	65.11	143
1 1/4"	ABS30P0400	92.45	197
1 1/2"	ABS30P0500	104.68	289
2"	ABS30P0630	144.40	475

ABS Electrically Actuated Double Union Ball Valves

26P

12-24 V DC/AC EPDM - Plain



Size	Code	£	GR
½"	ABS26P0200	1028.12	2440
¾"	ABS26P0250	1045.84	2640
1"	ABS26P0320	1056.44	2650
1 ¼"	ABS26P0400	1169.92	3400
1 ½"	ABS26P0500	1192.84	3410
2"	ABS26P0630	1205.37	3650
2 ½"	ABS26P0750	1843.51	4740
3"	ABS26P0900	1914.42	5980

27P

85-240 V DC/AC EPDM - Plain



Size	Code	£	GR
½"	ABS27P0200	1028.12	2440
¾"	ABS27P0250	1045.84	2640
1"	ABS27P0320	1056.44	2650
1 ¼"	ABS27P0400	1169.92	3400
1 ½"	ABS27P0500	1192.84	3410
2"	ABS27P0630	1205.37	3650
2 ½"	ABS27P0750	1843.51	4740
3"	ABS27P0900	1914.42	5980

ABS Actuator Valve Bodies With Adaptor

25P

Ball Valve Double Union Plain Socket - Plain



Size	Code	£	GR
½"	ABS25P0200	123.47	140
¾"	ABS25P0250	131.14	340
1"	ABS25P0320	142.82	350
1 ¼"	ABS25P0400	154.21	800
1 ½"	ABS25P0500	167.95	810
2"	ABS25P0630	205.66	1350
2 ½"	ABS25P0750	437.02	2440
3"	ABS25P0900	555.25	3680

The Actuator Valves are our Industrial ABS22 Series Valves with Actuator Mounting

Polypropylene Ball Valves Compression Joint

50Q



Polypropylene Double Union Ball Valve Compression Joint with EPDM Seal

Size	Code	£	GR
20	PPB50Q0200	20.35	210
25	PPB50Q0250	27.23	249
32	PPB50Q0320	36.85	387
40	PPB50Q0400	43.59	539
50	PPB50Q0500	54.53	756
63	PPB50Q0630	72.28	1293

51Q



Polypropylene Double Union Ball Valve PVC Socket / Compression Joint with EPDM Seals

Size	Code	£	GR
20	PPB51Q0200	18.69	214
25	PPB51Q0250	24.83	239
32	PPB51Q0320	30.31	372
40	PPB51Q0400	38.51	521
50	PPB51Q0500	45.11	753
63	PPB51Q0630	63.01	1258

52Q



Polypropylene Double Union Ball Valve BSP Female Socket Compression Joint EPDM Seals

Size	Code	£	GR
½" 20	PPB52Q0200	19.42	214
¾" 25	PPB52Q0250	25.57	237
1" 32	PPB52Q0320	31.63	376
1 ¼" 40	PPB52Q0400	39.85	529
1 ½" 50	PPB52Q0500	46.79	742
2" 63	PPB52Q0630	65.01	1267

53Q



Polypropylene Double Union Ball Valve BSP Male Compression Joint with EPDM Seals

Size	Code	£	GR
½" 20	PPB53Q0200	20.43	208
¾" 25	PPB53Q0250	26.83	246
1" 32	PPB53Q0320	33.24	391
1 ¼" 40	PPB53Q0400	41.91	542
1 ½" 50	PPB53Q0500	49.12	753
2" 63	PPB53Q0630	63.94	1294

Polypropylene Ball Valves Compression Joint

56Q



**Polypropylene Single Union Ball Valve BSP
Male/Compression Joint**

Size	Code	£	GR
1/2"	20 PPB56Q0200	16.28	119
3/4"	25 PPB56Q0250	19.96	196
1"	32 PPB56Q0320	23.43	267
1 1/4"	40 PPB56Q0400	34.50	372
1 1/2"	50 PPB56Q0500	39.85	559

57Q



**Polypropylene Single Union Ball Valve BSP
Female/Compression Joint**

Size	Code	£	GR
1/2"	20 PPB57Q0200	16.28	119
3/4"	25 PPB57Q0250	19.96	193
1"	32 PPB57Q0320	23.43	254
1 1/4"	40 PPB57Q0400	34.50	364
1 1/2"	50 PPB57Q0500	39.85	551

Polypropylene Ball Valves Industrial

60I



**Polypropylene Double Union Ball Valve Fusion Sockets
with EPDM Seals**

Size	Code	£	GR
20	PPH60I0200	41.49	206
25	PPH60I0250	49.82	297
32	PPH60I0320	56.54	461
40	PPH60I0400	72.37	673
50	PPH60I0500	91.30	1141
63	PPH60I0630	117.47	2092

60F



**Polypropylene Double Union Ball Valve BSP Threaded
with EPDM Seals**

Size	Code	£	GR
1/2"	PPH60F0200	43.56	207
3/4"	PPH60F0250	52.30	283
1"	PPH60F0320	59.36	469
1 1/4"	PPH60F0400	75.98	674
1 1/2"	PPH60F0500	95.87	1142
2"	PPH60F0630	123.34	2092

PP Electrically Actuated Double Union Ball Valves

12-24V- DC/AC - 26I

Electrically Actuated PP-R Plain with EPDM Seals



Size	Code	£	GR
20	PPR26I0200	1369.16	2440
25	PPR26I0250	1393.22	2640
32	PPR26I0320	1417.24	2650
40	PPR26I0400	1561.36	3400
50	PPR26I0500	1585.38	3410
63	PPR26I0630	1609.40	3650

12-24V-DC/AC – 26F

Electrically Actuated PP-H BSP with EPDM Seals



Size	Code	£	GR
½"	PPH26F0200	1372.45	2440
¾"	PPH26F0250	1397.82	2640
1"	PPH26F0320	1423.41	2650
1 ¼"	PPH26F0400	1570.52	3400
1 ½"	PPH26F0500	1599.14	3410
2"	PPH26F0630	1627.71	3650

85-240V DC/AC – 27I

Electrically Actuated PP-R Plain with EPDM Seals



Size	Code	£	GR
20	PPR27I0200	1369.16	2440
25	PPR27I0250	1393.22	2640
32	PPR27I0320	1417.24	2650
40	PPR27I0400	1561.36	3400
50	PPR27I0500	1585.38	3410
63	PPR27I0630	1609.40	3650

85-240V DC/AC – 27F

Electrically Actuated PP-H BSP with EPDM Seals



Size	Code	£	GR
½"	PPH27F0200	1372.45	2440
¾"	PPH27F0250	1397.82	2640
1"	PPH27F0320	1423.41	2650
1 ¼"	PPH27F0400	1570.52	3400
1 ½"	PPH27F0500	1599.14	3410
2"	PPH27F0630	1627.71	3650

Backing Rings Galvanised Mild Steel

BEA

Galvanised Mild Steel Drilled to BS10 Table D/E



Size	Code	£	GR
1/2"	GMSBEA0200	6.93	210
3/4"	GMSBEA0250	7.78	230
1"	GMSBEA0320	8.17	290
1 1/4"	GMSBEA0400	8.56	293
1 1/2"	GMSBEA0500	10.37	370
2"	GMSBEA0630	14.72	590
2 1/2"	GMSBEA0750	20.71	1480
3"	GMSBEA0900	22.34	1060
4"	GMSBEA1100	28.89	1190
6"	GMSBEA1600	51.23	2160
8"	GMSBEA2250	66.26	3507

BNI

Galvanised Mild Steel Drilled to BS4505 NP10/16



Size	Code	£	GR
1/2" / 20	GMSBNI0200	7.94	350
3/4" / 25	GMSBNI0250	8.17	415
1" / 32	GMSBNI0320	9.20	410
1 1/4" / 40	GMSBNI0400	9.34	590
1 1/2" / 50	GMSBNI0500	11.53	730
2" / 63	GMSBNI0630	16.27	823
2 1/2" / 75	GMSBNI0750	22.34	1230
3" / 90	GMSBNI0900	24.76	1480
4" / 110	GMSBNI1100	32.01	1689
5" / 140	GMSBNI1400	50.13	1941
6" / 160	GMSBNI1600	52.79	2703
200	GMSBNI2000	69.54	3126
8" / 225	GMSBNI2250	72.31	3230
250	GMSBNI2500	119.49	5740
280	GMSBNI2800	159.98	7950
315	GMSBNI3150	162.56	8583

PVC-U Backing Rings

FLI

PVC-U Backing Ring NP10/16



Size	Code	£	GR
50	PVCFLI0500	12.77	210
63	PVCFLI0630	18.16	300
75	PVCFLI0750	25.84	355
90	PVCFLI0900	27.56	431
110	PVCFLI1100	35.28	523
125	PVCFLI1250	39.24	590
140	PVCFLI1400	49.30	760
160	PVCFLI1600	58.63	981
200	PVCFLI2000	60.72	1243
225	PVCFLI2250	77.74	1200
250	PVCFLI2500	93.52	2070
315	PVCFLI3150	226.98	3050
400	PVCFLI4000	336.97	

Bolt Sets

Bright Zinc Plated Bolt Sets (4 per Set)



Size	Code	£	GR
M12 x 55	M12X55BOLTSET	4.32	55
M12 x 60	M12X60BOLTSET	4.50	56
M16 x 50	M16X50BOLTSET	9.58	60
M16 x 60	M16X60BOLTSET	10.30	60
M16 x 65	M16X65BOLTSET	10.62	68
M16 x 70	M16X70BOLTSET	11.06	72
M16 x 75	M16X75BOLTSET	11.86	76
M16 x 80	M16X80BOLTSET	12.20	80
M16 x 90	M16X90BOLTSET	12.40	84
M16 x 100	M16X100BOLTSET	13.82	100
M16 x 110	M16X110BOLTSET	15.65	108
M16 x 120	M16X120BOLTSET	16.34	112
M16 x 130	M16X130BOLTSET	18.04	120
M16 x 140	M16X140BOLTSET	22.30	124
M16 x 150	M16X150BOLTSET	26.32	128
M16 x 160	M16X160BOLTSET	27.50	132
M16 x 170	M16X170BOLTSET	28.90	136
M16 x 180	M16X180BOLTSET	31.50	148
M16 X 200	M16X200BOLTSET	32.00	180
M16 x 220	M16X220BOLTSET	34.00	196
M16 x 240	M16X240BOLTSET	39.86	204
M16 x 260	M16X260BOLTSET	44.72	220
M16 x 280	M16X280BOLTSET	45.86	228
M16 x 300	M16X300BOLTSET	53.08	236
M20 x 60	M20X60BOLTSET	18.80	108
M20 x 65	M20X65BOLTSET	19.12	110
M20 x 70	M20X70BOLTSET	19.36	114
M20 x 75	M20X75BOLTSET	20.12	118
M20 x 80	M20X80BOLTSET	20.84	122
M20 x 90	M20X90BOLTSET	21.44	130
M20 x 100	M20X100BOLTSET	22.58	138
M20 x 110	M20X110BOLTSET	24.20	146
M20 x 120	M20X120BOLTSET	27.06	154
M20 x 130	M20X130BOLTSET	27.80	162
M20 x 140	M20X140BOLTSET	28.65	170
M20 x 150	M20X150BOLTSET	30.00	178
M20 x 160	M20X160BOLTSET	37.40	190
M20 x 170	M20X170BOLTSET	37.72	210
M20 x 180	M20X180BOLTSET	47.54	230
M20 x 200	M20X200BOLTSET	54.72	250
M20 x 220	M20X220BOLTSET	55.86	262
M20 x 240	M20X240BOLTSET	57.35	274
M20 x 260	M20X260BOLTSET	61.08	294
M20 x 280	M20X280BOLTSET	64.95	310
M20 x 300	M20X300BOLTSET	68.36	322

Bolt Sets

Stainless Steel Bolt Sets (4 per Set)



Size	Code	£	GR
M16 x 50	SSM16X50BOLTSET	20.57	55
M16 x 60	SSM16X60BOLTSET	21.82	56
M16 x 65	SSM16X65BOLTSET	22.65	60
M16 x 70	SSM16X70BOLTSET	23.48	60
M16 x 75	SSM16X75BOLTSET	24.52	76
M16 x 80	SSM16X80BOLTSET	25.35	80
M16 x 90	SSM16X90BOLTSET	27.22	84
M16 x 100	SSM16X100BOLTSET	28.88	100
M16 x 110	SSM16X110BOLTSET	30.96	108
M16 x 120	SSM16X120BOLTSET	33.04	112
M16 x 130	SSM16X130BOLTSET	35.33	120
M16 x 140	SSM16X140BOLTSET	39.48	124
M16 x 150	SSM16X150BOLTSET	44.47	128
M16 x 160	SSM16X160BOLTSET	48.83	132
M16 x 180	SSM16X180BOLTSET	61.30	148
M16 X 200	SSM16X200BOLTSET	70.23	180
M16 x 220	SSM16X220BOLTSET	86.86	196
M16 x 240	SSM16X240BOLTSET	104.73	204
M20 x 60	SSM20X60BOLTSET	41.35	108
M20 x 65	SSM20X65BOLTSET	38.86	110
M20 x 70	SSM20X70BOLTSET	40.52	114
M20 x 75	SSM20X75BOLTSET	42.18	118
M20 x 80	SSM20X80BOLTSET	43.22	122
M20 x 90	SSM20X90BOLTSET	45.92	130
M20 x 100	SSM20X100BOLTSET	48.62	138
M20 x 110	SSM20X110BOLTSET	51.53	146
M20 x 120	SSM20X120BOLTSET	55.06	154
M20 x 130	SSM20X130BOLTSET	58.18	162
M20 x 140	SSM20X140BOLTSET	63.58	170
M20 x 150	SSM20X150BOLTSET	68.36	178
M20 x 160	SSM20X160BOLTSET	80.21	190
M20 x 180	SSM20X180BOLTSET	96.83	230
M20 x 200	SSM20X200BOLTSET	103.48	250
M20 x 220	SSM20X220BOLTSET	121.35	262
M20 x 240	SSM20X240BOLTSET	138.39	274

Gaskets

GPA



Flat Gasket for Full Face Flange Drilled to BS10 Table D/E EPDM

Size	Code	£	GR
1/2"	ACCGPA0200	2.20	30
3/4"	ACCGPA0250	2.35	36
1"	ACCGPA0320	2.72	35
1 1/4"	ACCGPA0400	3.17	40
1 1/2"	ACCGPA0500	4.35	55
2"	ACCGPA0630	4.71	57
2 1/2"	ACCGPA0750	6.40	56
3"	ACCGPA0900	6.93	99
4"	ACCGPA1100	10.12	114
6"	ACCGPA1600	16.21	116
8"	ACCGPA2250	18.06	163

GPI



Flat Gasket for Full Face Flange Drilled to BS4505 NP10/16 EPDM

Size	Code	£	GR
1/2" / 20	ACCGPI0200	2.33	30
3/4" / 25	ACCGPI0250	2.49	36
1" / 32	ACCGPI0320	2.88	35
1 1/4" / 40	ACCGPI0400	3.36	40
1 1/2" / 50	ACCGPI0500	4.60	55
2" / 63	ACCGPI0630	4.99	59
2 1/2" / 75	ACCGPI0750	6.78	78
3" / 90	ACCGPI0900	6.93	98
4" / 110	ACCGPI1100	10.12	116
6" / 160	ACCGPI1600	16.51	163
8" / 225	ACCGPI2250	18.06	195

GSP



Flat Gasket for Stub Flanges

Size	Code	£	GR
1" / 32	ACCGSP0320	2.02	26
1 1/4" / 40	ACCGSP0400	2.33	29
1 1/2" / 50	ACCGSP0500	2.49	34
2" / 63	ACCGSP0630	2.58	35
2 1/2" / 75	ACCGSP0750	2.72	38
3" / 90	ACCGSP0900	3.11	40
4" / 110	ACCGSP1100	4.37	43
125	ACCGSP1250	6.08	47
5" / 140	ACCGSP1400	6.32	59
6" / 160	ACCGSP1600	6.38	76
200	ACCGSP2000	8.65	81
8" / 225	ACCGSP2250	13.39	86

PP Pipe Brackets

PCP

Polypropylene Pipe Bracket with Safety Clip



Size	Code	£	GR
3/8"	ACCPCP0160	1.25	4
1/2"	ACCPCP0200	1.33	6
3/4"	ACCPCP0250	1.56	8
1"	ACCPCP0320	1.80	11
1 1/4"	ACCPCP0400	2.27	14
1 1/2"	ACCPCP0500	2.58	20
2"	ACCPCP0630	3.28	25
2 1/2"	ACCPCP0750	4.75	33
3"	ACCPCP0900	5.93	49
4"	ACCPCP1100	10.37	73
5"	ACCPCP1400	11.29	96
6"	ACCPCP1600	14.79	186

PCI

Polypropylene Pipe Bracket with Safety Clip



Size	Code	£	GR
16	ACCPCI0160	1.25	4
20	ACCPCI0200	1.33	5
25	ACCPCI0250	1.56	7
32	ACCPCI0320	1.80	10
40	ACCPCI0400	2.27	15
50	ACCPCI0500	2.58	20
63	ACCPCI0630	3.28	25
75	ACCPCI0750	4.75	33
90	ACCPCI0900	5.93	48
110	ACCPCI1100	10.37	75
125	ACCPCI1250	10.76	96
140	ACCPCI1400	11.14	135
160	ACCPCI1600	14.79	187

GCI

Green Rubber Lined Pipe Clip 10mm Bossed



Size	Code	£	GR
19-23mm	ACCGCI0200	3.72	
24-29mm	ACCGCI0250	3.93	
30-35mm	ACCGCI0320	4.28	
38-43mm	ACCGCI0400	5.37	
48-54mm	ACCGCI0500	5.68	
64-67mm	ACCGCI0630	10.07	
69-76mm	ACCGCI0750	10.76	
87-91mm	ACCGCI0900	11.02	
108-111mm	ACCGCI1100	13.25	
138-141mm	ACCGCI1400	19.58	
159-160mm	ACCGCI1600	24.54	

NB: Black rubber lined clips are not recommended for plastics

PCB

40mm -110mm includes safety bracket



Size	Code	£	GR
20mm	ACCPCB0200	1.07	8
25mm	ACCPCB0250	1.22	11
32mm	ACCPCB0320	1.60	13
40mm	ACCPCB0400	2.02	24
50mm	ACCPCB0500	2.36	29
63mm	ACCPCB0630	3.24	45
90mm	ACCPCB0900	6.49	94
110mm	ACCPCB1100	7.48	128

Solvent Cement

PEM

PVC Solvent Cement



Size	Code	£	GR
500ml Tin	ACCPERM0500	22.91	573

AEM

ABS Solvent Cement



Size	Code	£	GR
500ml Tin	ACCAEM0500	12.91	549

CLM

Cleaning Fluid for PVC-U and ABS



Size	Code	£	GR
500ml Tin	ACCCLM0500	10.83	463

WDF

PVC-U & ABS Fast Setting Cement



Size	Code	£	GR
250ml	ACCWDF0250	13.74	310
500ml	ACCWDF0500	23.22	620

Ideal for swimming pools/spa's and aquatic installations. WDF cement is suitable for use in wet or damp conditions has gap filling properties and is fast setting.

BRU

Brushes for Solvent Cement



Size	Code	£	GR
1/2"	ACCBRU0200	1.39	5
1"	ACCBRU0320	1.86	10
1 1/2"	ACCBRU0500	3.74	15
2"	ACCBRU0630	4.49	20

PTFE

TAPE



Size	Code	£	GR
1 x Roll	PTFETAPE1	0.85	11
10 x Rolls	PTFETAPE10	7.21	110
1 x Roll	PTFETAPEPRO1	4.16	11

PVC-U Pipe

CLC

PVC-U Pipe Class C



Size	Code	Lth	£	KG
2"	PVCUCLC0630	6mtr	33.36	4.33
2 1/2"	PVCUCLC0750	5mtr	42.52	5.90
3"	PVCUCLC0900	6mtr	64.82	8.86
4"	PVCUCLC1100	6mtr	101.96	14.52
5"	PVCUCLC1400	5mtr	126.35	24.00
6"	PVCUCLC1600	6mtr	235.51	32.50
8"	PVCUCLC2250	6mtr	573.52	69.00

CLE

PVC-U Pipe Class E



Size	Code	Lth	£	KG
1/2"	PVCUCLE0200	6mtr	8.56	0.98
3/4"	PVCUCLE0250	6mtr	12.20	1.48
1"	PVCUCLE0320	6mtr	15.68	2.00
1 1/4"	PVCUCLE0400	6mtr	24.88	3.18
1 1/2"	PVCUCLE0500	6mtr	31.92	4.18
2"	PVCUCLE0630	6mtr	45.90	6.12
2 1/2"	PVCUCLE0750	5mtr	75.97	15.00
3"	PVCUCLE0900	6mtr	100.37	13.94
4"	PVCUCLE1100	6mtr	158.36	22.86
6"	PVCUCLE1600	6mtr	500.18	61.77

CL10

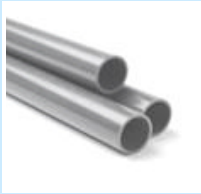
PVC-U Pipe 10 Bar



Size	Code	Lth	£	KG
32	PVCUCL100320	5mtr	10.51	1.23
40	PVCUCL100400	5mtr	17.40	1.80
50	PVCUCL100500	5mtr	25.29	2.84
63	PVCUCL100630	5mtr	29.84	4.39
75	PVCUCL100750	5mtr	42.52	6.10
90	PVCUCL100900	5mtr	59.20	8.72
110	PVCUCL101100	5mtr	86.70	10.88
125	PVCUCL101250	5mtr	156.39	13.70
140	PVCUCL101400	5mtr	126.35	17.08
160	PVCUCL101600	5mtr	184.04	23.16
200	PVCUCL102000	5mtr	309.73	34.50
225	PVCUCL102250	5mtr	390.07	45.00
250	PVCUCL102500	5mtr	523.55	52.46
315	PVCUCL103150	5mtr	759.10	107.00

CL16

PVC-U Pipe 16 Bar



Size	Code	Lth	£	KG
16	PVCUCL160160	5mtr	7.03	0.87
20	PVCUCL160200	5mtr	8.22	0.85
25	PVCUCL160250	5mtr	10.09	1.08
32	PVCUCL160320	5mtr	14.33	1.75
40	PVCUCL160400	5mtr	21.70	2.70
50	PVCUCL160500	5mtr	33.24	4.00
63	PVCUCL160630	5mtr	44.79	6.40
75	PVCUCL160750	5mtr	63.98	9.39
90	PVCUCL160900	5mtr	90.42	12.45
110	PVCUCL161100	5mtr	131.24	15.95
160	PVCUCL161600	5mtr	416.82	34.36

PVC-U Pipe

CLC

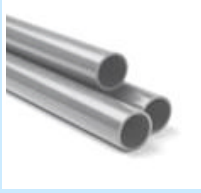
PVC-U Pipe Class C



Size	Code	Lth	£	KG
2"	PVCUCLC06303M	3mtr	16.68	2.16
2 1/2"	PVCUCLC07502.5M	2.5mtr	22.76	2.95
3"	PVCUCLC09003M	3mtr	32.41	4.43
4"	PVCUCLC11003M	3mtr	50.98	7.26
5"	PVCUCLC14003M	3mtr	63.18	12.00
6"	PVCUCLC16003M	3mtr	117.76	16.25
8"	PVCUCLC22503M	3mtr	286.76	34.50

CLE

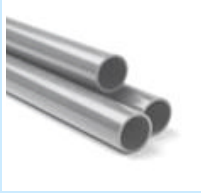
PVC-U Pipe Class E



Size	Code	Lth	£	KG
1/2"	PVCUCLE02003M	3mtr	4.28	0.49
3/4"	PVCUCLE02503M	3mtr	6.10	0.74
1"	PVCUCLE03203M	3mtr	7.84	1.00
1 1/4"	PVCUCLE04003M	3mtr	12.44	1.59
1 1/2"	PVCUCLE05003M	3mtr	15.96	2.09
2"	PVCUCLE06303M	3mtr	22.95	3.06
2 1/2"	PVCUCLE07502.5M	2.5mtr	37.99	7.50
3"	PVCUCLE09003M	3mtr	50.19	6.97
4"	PVCUCLE11003M	3mtr	79.18	11.43
6"	PVCUCLE16003M	3mtr	250.09	30.88

CL10

PVC-U Pipe 10 Bar



Size	Code	Lth	£	KG
32	PVCUCL1003202.5M	2.5mtr	5.26	0.61
40	PVCUCL1004002.5M	2.5mtr	8.70	0.90
50	PVCUCL1005002.5M	2.5mtr	12.65	1.42
63	PVCUCL1006302.5M	2.5mtr	14.92	2.19
75	PVCUCL1007502.5M	2.5mtr	21.26	3.05
90	PVCUCL1009002.5M	2.5mtr	29.60	4.36
110	PVCUCL1011002.5M	2.5mtr	43.35	5.44
125	PVCUCL1012502.5M	2.5mtr	78.20	6.85
140	PVCUCL1014002.5M	2.5mtr	63.18	8.54
160	PVCUCL1016002.5M	2.5mtr	92.02	11.58
200	PVCUCL1020002.5M	2.5mtr	154.87	17.25
225	PVCUCL1022502.5M	2.5mtr	195.04	22.50
250	PVCUCL1025002.5M	2.5mtr	261.78	26.23
315	PVCUCL1031502.5M	2.5mtr	379.55	53.50

CL16

PVC-U Pipe 16 Bar



Size	Code	Lth	£	KG
16	PVCUCL1601602.5M	2.5mtr	3.52	0.43
20	PVCUCL1602002.5M	2.5mtr	4.11	0.42
25	PVCUCL1602502.5M	2.5mtr	5.05	0.54
32	PVCUCL1603202.5M	2.5mtr	7.15	0.87
40	PVCUCL1604002.5M	2.5mtr	10.85	1.35
50	PVCUCL1605002.5M	2.5mtr	16.62	2.00
63	PVCUCL1606302.5M	2.5mtr	22.40	3.20
75	PVCUCL1607502.5M	2.5mtr	31.99	4.69
90	PVCUCL1609002.5M	2.5mtr	45.21	6.22
110	PVCUCL1611002.5M	2.5mtr	65.62	7.97
160	PVCUCL1616002.5M	2.5mtr	208.41	17.18

ABS PIPE

CLC



ABS Pipe Class C

Size	Code	Lth	£	KG
1"	ABSCLC0320	6mtr	34.80	1.26
1 ¼"	ABSCLC0400	6mtr	58.45	1.92
1 ½"	ABSCLC0500	6mtr	74.20	2.52
2"	ABSCLC0630	6mtr	99.80	4.03
2 ½"	ABSCLC0750	6mtr	POA	6.84
3"	ABSCLC0900	6mtr	206.46	8.40
4"	ABSCLC1100	6mtr	339.32	12.90
6"	ABSCLC1600	6mtr	696.96	35.00
8"	ABSCLC2250	6mtr	POA	69.00

CLE



ABS Pipe Class E

Size	Code	Lth	£	KG
½"	ABSCLE0200	6mtr	26.48	0.78
¾"	ABSCLE0250	6mtr	40.88	1.20
1"	ABSCLE0320	6mtr	53.86	1.86
1 ¼"	ABSCLE0400	6mtr	80.32	2.94
1 ½"	ABSCLE0500	6mtr	105.92	3.84
2"	ABSCLE0630	6mtr	132.90	6.00
3"	ABSCLE0900	6mtr	266.41	12.96
4"	ABSCLE1100	6mtr	429.08	21.54

CLC



ABS Pipe Class C

Size	Code	Lth	£	KG
1"	ABSCLC03203M	3mtr	17.40	0.63
1 ¼"	ABSCLC04003M	3mtr	29.22	0.96
1 ½"	ABSCLC05003M	3mtr	37.10	1.26
2"	ABSCLC06303M	3mtr	49.90	2.02
2 ½"	ABSCLC07503M	3mtr	POA	3.42
3"	ABSCLC09003M	3mtr	103.23	4.20
4"	ABSCLC11003M	3mtr	169.66	6.45
6"	ABSCLC16003M	3mtr	348.48	17.50
8"	ABSCLC22503M	3mtr	POA	34.50

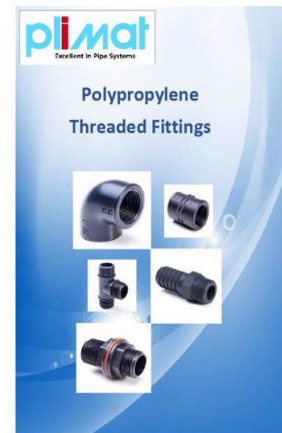
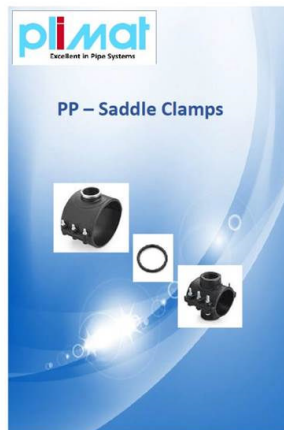
CLE



ABS Pipe Class E

Size	Code	Lth	£	KG
½"	ABSCLE02003M	3mtr	13.24	0.36
¾"	ABSCLE02503M	3mtr	20.44	0.60
1"	ABSCLE03203M	3mtr	26.93	0.93
1 ¼"	ABSCLE04003M	3mtr	40.16	1.47
1 ½"	ABSCLE05003M	3mtr	52.96	1.92
2"	ABSCLE06303M	3mtr	66.45	3.00
3"	ABSCLE09003M	3mtr	133.20	6.48
4"	ABSCLE11003M	3mtr	214.54	10.77

Do you know we also Stock



Please ask for Catalogues and prices

PLIMAT - Trading Terms and Conditions

1 GENERAL

"Seller" shall mean Plimat (UK) Limited, Registered in England under number 03048432. "Buyer" shall mean any company, organisation or individual to whom a quotation is offered, or whose order is accepted by the Seller.

2 CONDITIONS

All offers, quotations, estimates, acceptances and contracts are subject to these Conditions of Business and any terms or conditions which any other person shall seek to impose or make part of any contract shall, so far as is inconsistent with these Conditions of Business, not apply unless expressly agreed by the Seller in writing. The headings in these conditions are for convenience only and shall not affect their interpretation unless expressly agreed by the Seller in writing. The headings in these conditions are for convenience only and shall not affect their interpretation.

3 ELECTRONIC TRADING

If the Seller and Buyer agree that electronic trading between them shall be a basis for ordering processing and invoicing then these terms and conditions shall apply subject to any special terms and conditions terms which are specific to electronic trading and which have been agreed by the parties in writing. Electronic orders shall be valid if all the information agreed between the Buyer and Seller as being required is properly set out in the agreed format and the order is transmitted by the Buyer to the Seller by reference to the correct identification code and is received by the Seller when collecting its electronic mail from the relevant system.

4 QUOTATION

- (a) A quotation by the Seller does not constitute an offer and the Seller reserves the right to withdraw or amend the same at any time prior to the Seller acceptance of the Purchaser's order.
- (b) Unless stated otherwise, all quotations and published price lists are ex works, exclusive of VAT and shall remain valid for 30 days or such a period as may be quoted but nevertheless the Seller may amend or withdraw any quotation by written or oral notice. Quotations may be varied if the Buyer makes variations in his specifications.

5 PRICES

- (a) The Seller will endeavour to ensure that all prices on display/provided to Buyer are correct and up to date. However, should a Buyer place an Order using an incorrect price then the Buyer agrees that the Seller may substitute the incorrect price set out in the Order for the correct price standard price, as appropriate and charge accordingly.
- (b) The Seller shall be entitled at any time by giving notice in Writing, before or after final invoicing to make a reasonable adjustment to the price in the event of any alteration in quantity, design or specification requested by the Buyer.
- (c) The Seller reserves the right at any time prior to delivery by giving notice in Writing to increase the price if there is any increase in cost of materials, labour, transport or utilities or if the costs of the Seller are increased by any other factor beyond the reasonable control of the Seller.

6 DELIVERY

- (a) Except where stated to the contrary in the contract, delivery shall be made as follows:
 - (i) where the Buyer provides the transport, delivery shall be made ex the Seller's works;
 - (ii) where the Seller provides the transport, delivery shall be made to the premises of the Buyer, or the premises of the Buyer's customer or works site if the Buyer has requested delivery to be so made but where the Buyer has made such a request the Seller will make a first delivery to the Buyer's customer or works site as so much of goods as is available for that delivery but subsequent deliveries will be made to the premises of the Buyer.
- (b) Unless otherwise expressly agreed in Writing the Seller may effect delivery in one or more instalments. Where delivery is effected by instalments, the instalment shall be treated as a separate contract governed by these conditions. No delay in the delivery of any instalment of Products or any defect therein shall entitle the Buyer to terminate the remainder of the contract.
- (c) Where goods are sent FOB the Seller's responsibility shall cease when the goods are placed on board ship or aircraft without the need for the Seller to give notice to the Buyer and the provisions of Section 32(3) of the Sale of Goods Act 1979 shall not apply.

7 RISK AND TITLE

- (a) Risk of damage to or loss of the Products shall pass to the Buyer upon delivery and the Buyer is then solely responsible for all loss damage or deterioration to the Products.
- (b) Title to the Products shall not pass to the Buyer until either:
 - (i) the Seller has received in cash or cleared funds all monies payable (whether or not due) to the Seller under this and any other contracts whenever made between the Seller and the Buyer including contracts made after this contract; or
 - (ii) when the Seller serves on the Buyer notice in Writing specifying that title in the Products or any part thereof has passed.
- (c) Until title has passed to the Buyer the Seller may require the Buyer to deliver up to the Seller all Products in respect of which the Seller has title and if the Buyer fails to do so forthwith the Buyers officers, employees, representatives or agents shall be entitled to enter upon any premises where such Products are kept for the purposes of recovering the same.

- (d) Until title the Products has passed to the Buyer pursuant to these conditions it shall possess the Products as fiduciary agent and bailee of the Seller and shall store the Products separately from other goods not owned by the Seller and shall ensure that they are fully insured on all risks basis and clearly identifiable as belonging to the Seller and the Seller shall be entitled to enter upon any premises where such Products are kept for the purpose of satisfying itself that this condition is being complied with by the Buyer.

8 TERMS OF PAYMENT

- (a) Unless otherwise agree by the Seller in Writing, the Buyer shall make payment by the last day of the month following the month of invoice and the Seller shall be entitled to issue invoices in the month in which the Products are delivered or would have been delivered, save for postponement or delay otherwise than due to default on the part of the Seller. Time for payment of the price is of the essence of the contract.
- (b) No disputes arising under this contract shall serve to permit payment by the Buyer of sums due to the Seller to be delayed nor shall disputes interfere with prompt payment in full. The Buyer shall not be entitled to make any deduction from or set off against any sums owing to the Seller by reason of any such dispute or at all.
- (c) In the event of default in payment by the Buyer and Seller shall be entitled, without prejudice to any other right or remedy;
 - (i) to suspend without notice all further deliveries on this or any other contract between the Seller and the Buyer.
 - (ii) to charge interest on a daily basis (after as well as before judgement) on any amount outstanding at the rate of 4% above the Base Rate of HSBC Bank from time to time; and/or
 - (iii) to serve notice on the Buyer requiring immediate payment for all goods supplied by the Seller under this and all other contracts between them whether or not payment is otherwise due or invoiced.

9 SHORTAGES AND DEFECTS APPARENT ON DELIVERY

- (a) It shall be the responsibility of the Buyer to inspect or arrange for an inspection of the goods on delivery whether the goods are delivered to the Buyer's premises or to the premises of the Buyer's customer or to a works site. If no such inspection is made the Buyer shall be deemed to have accepted the goods.
- (b) The Buyer shall have no claim for shortages or defects apparent on inspection unless:
 - (i) a written complaint is made to the Seller within three days of receipt of the goods specifying the shortage or defect; and
 - (ii) the Seller is within seven days of receipt of the complaint given an opportunity to investigate the complaint before any use is made of the goods.
- (c) If a complaint is not made to the Seller as herein provided then in respect of such shortages or defects the goods shall be deemed to be in all respects in accordance with the contract and the Buyer shall be bound to pay for the same accordingly.

10 CLAIMS FOR DEFECTS NOT APPARENT ON INSPECTION

- (a) The Buyer shall have no claim for defects not apparent on inspection unless the Seller is notified in Writing of defective workmanship or materials within twelve months from delivery of the goods. Provided that the goods have been installed and applied in accordance with any relevant recommendations made by the Seller, the Seller will at its option replace the goods or refund the net invoiced price in respect of the goods which have been shown to be defective. If the Seller does so supply substitute goods the Buyer shall be bound to accept such substituted goods in full satisfaction of the obligations of the Seller under the contract.
- (b) The Buyer shall in any event have no claim or off-set in respect of defects unless a written complaint is sent to the Seller as soon as the defect is noticed and no use is made of the goods thereafter or alteration made thereto by the Buyer before the Seller is given an opportunity to inspect the goods.
- (c) The Buyer is responsible for ensuring that the goods are fit for any particular purpose, and no warranty or condition of fitness for any particular purpose is to be implied into the contract.

11 WARRANTY

- (a) The Seller warrants that Products which do not comply with Sections 13 to 15 of the Sale of Goods Act 1979 (as amended) are shown to have been defective at delivery as a result of faulty design workmanship or materials (other than free-issue materials), shall either be repaired or replaced or that, at the Sellers option, a credit or refund for the price thereof shall be given provided always that:
 - (i) the Seller receives written notice of the defect within 12 months of delivery;
 - (ii) no alteration to or interference with the Products takes place before the Seller is given access to the Products to inspect and test the same;
 - (iii) the defect does not consist of a loss shortage or damage to which Clause 9 is expressed to apply;
 - (iv) the defect does not arise by reason of a design specification or instruction given by the Buyer;
 - (v) the Buyer has not defaulted in its obligation to make payment of the contract price for the Products;
 - (vi) the defect shall not be attributable to incorrect storage or use of the Products by the Buyer
 - (vii) the Buyer shall indemnify the Seller in respect of loss or damage arising from any use made of Products after the Buyer became or ought reasonably to have been aware of a defect
- (b) In the event of a valid claim being made in accordance with Clause 11a;
 - (i) the Buyer shall be bound to accept repaired or replacement Products or at the Sellers option credit or repayment and shall not be entitled to terminate the contract.

12 LIABILITY

- (a) The Seller does not exclude liability arising under Section 12 of the Sale of Goods Act 1979 (good title) (as amended) or for death or personal injury caused by its negligence as defined in the Unfair Contract Terms Act 1977, fraudulent misrepresentation or any other type of liability which cannot by law be excluded or limited.
- (b) Save as provided under Clause 9, 10 and 11. A Seller shall have no liability to the Buyer in connection with or arising from any defect or failure in the Products or otherwise due to the quality, condition, suitability, durability, safety or any aspect or feature of the Products. The Sellers liability, whether in respect of one claim or in the aggregate, shall not exceed the contract price payable under this contract for the supply of Products to be provided under it. The price of the Products is predicted on the basis of the limitation of the Sellers liability is therefore reasonable in all the circumstances. The Buyers agrees that it is its own responsibility to insure adequately to cover any loss or damage in excess of the aforesaid limit of the Sellers liability. Subject to reaching agreement on terms, the Seller and the Buyer may determine an increased level of liability which is to be accepted in Writing by the Seller to cover, in particular specific types of loss or damage which both parties reasonably foresee and anticipate.
- (c) In Clause b the term 'liability' means any form of liability whatsoever including but not limited to liability in misrepresentation and under contract, common law, equality and any statutory provision whether or not based on negligence or breach of any express or implied duty to act with care or skill.
- (d) Notwithstanding any other provisions of these conditions the Buyer shall have no claim against the Seller in respect of any loss.

13 FORCE MAJEURE

Notwithstanding anything herein contained neither the Buyer nor the Seller is to be held liable for any delay or failure to carry out the contract due wholly or in part to an act of God action by any Government British or foreign civil war strikes and/or lockouts where soever occurring fire trade disputes floods or unfavourable weather or any material becoming unavailable or irreplaceable (whether at all or at commercially acceptable prices) or any other circumstances beyond the control of the Seller.

14 INSOLVENCY AND BREACH OF CONTRACT

- In the event that;
- (a) the Buyer commits any breach of the contract and fails to remedy such breach (if capable of remedy) within a period 30 days from receipt of a notice in writing from the Seller requesting such remedy; or
 - (b) any distress or execution is levied upon any of the goods or property of the Buyer; or
 - (c) the Buyer offers to make any arrangements with or for the benefit of its creditors or (if an individual) becomes subject to a petition for a bankruptcy order or (being a limited company) has a receiver appointed of the whole or any part of its undertaking property or assets; or
 - (d) an order is made or a resolution is passed or analogous proceedings are taken for the winding up of the Buyer (save for the purpose of reconstruction or amalgamation with insolvency and previously approved in writing by the Seller) the Seller shall thereupon be entitled without prejudice to its other rights hereunder forthwith to suspend all further deliveries until the default has been made good or to determine the contract and any unfulfilled part thereof or at the Seller's option to make partial deliveries. Notwithstanding any such termination the Buyer shall pay to the Seller at the contract rate for all the goods delivered up to and including the date of termination.

15 INDUSTRIAL PROPERTY RIGHTS

If goods supplied by the Seller to the Buyer's design or specifications infringe or are alleged to infringe any patent or registered design right or copyright the Buyer will indemnify the Seller against all damages, costs and expenses incurred by the Seller as a result of the infringement or allegation. The Buyer will give the Seller all possible help in meeting any infringement claim brought against the Seller.

16 BUYER'S ERROR IN ORDERING

In the event the Buyer orders incorrectly the Seller will be under no obligation to the Buyer to rectify or assist in rectifying the error.

17 COMPANY LITERATURE

The information contained in the advertising, sales, technical and other literature issued by the Seller may be relied upon to be accurate in the exact circumstances in which it is expressed otherwise any illustrations performance details examples of installations and methods of assembly and all other information and data in such literature are based on experience and upon trials under test conditions and are provided for general guidance only. No such information or data shall form part of the contract unless it is specifically referred to in the Quotation.

18 LAW AND JURISDICTION

The contract shall be subject in all respects to English Law and to the jurisdiction of the English Courts.



Plimat UK Limited

Unit 7, Newmans Copse Road,
Hounslow Business Park,
Totton, Southampton, S040 9LX.
Tel 023 8042 7280 Fax 023 8042 7289
sales@plimatuk.com
www.plimatuk.com